



ESRI USER CONFERENCE



ArcGIS for the Military Land Operations: An Overview

Tom Smedley

Scott Cecilio

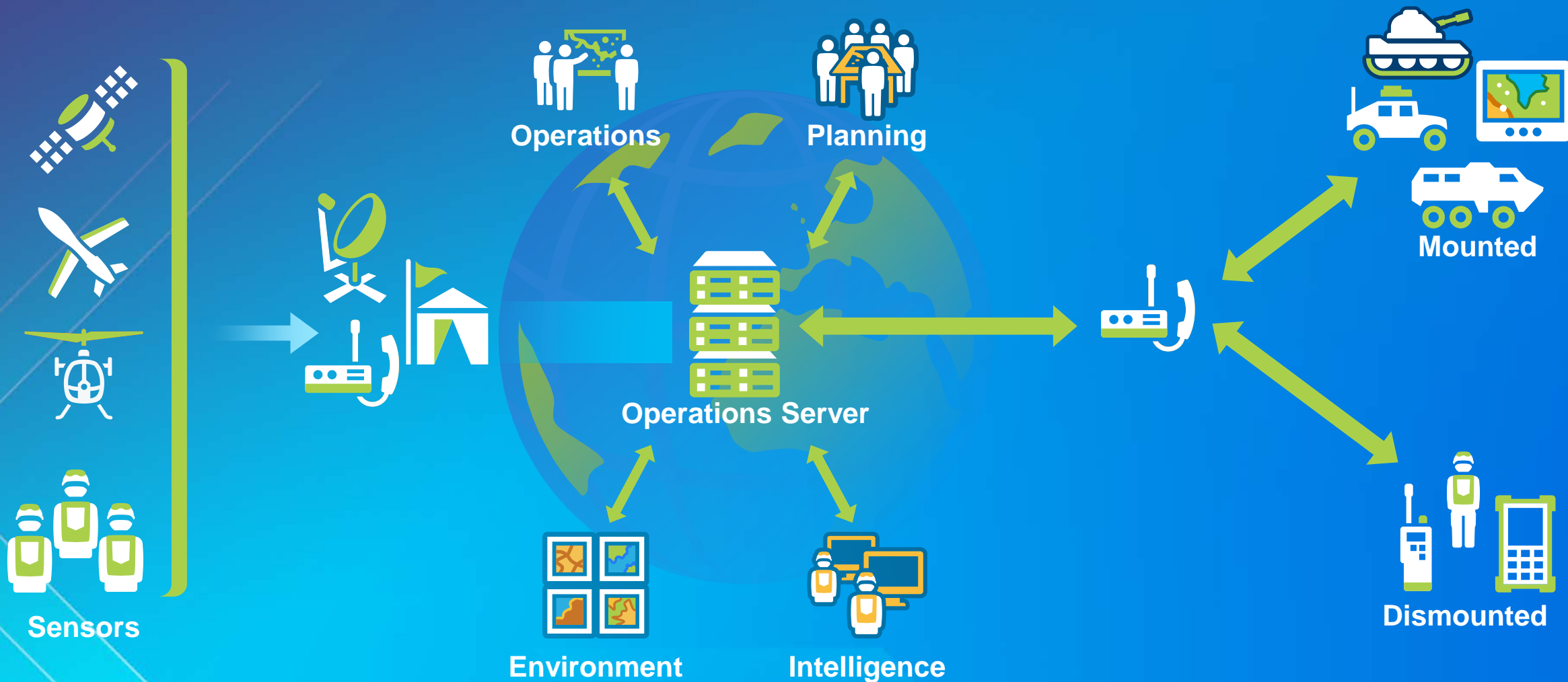
ArcGIS Is a Platform...

Enabling Web GIS Everywhere

Simple
Integrated
Open



*Available in the Cloud . . .
. . . and On-Premises*



A Platform Approach

ArcGIS for the Military Land Operations

What is a Template?

Fully documented and open source

- **Maps**
 - Useful examples of standard information products
 - MPK, Web Maps etc..
- **Tools**
 - Standalone Tools or scripts
- **Services**
 - Map, Image, Geoprocessing, Event Processing
- **Application Configurations**

**Templates are not new technology!
Instead they are built on what you already have and use.**

ArcGIS for the Military—Land Operations

Maps and apps to support deployed military forces

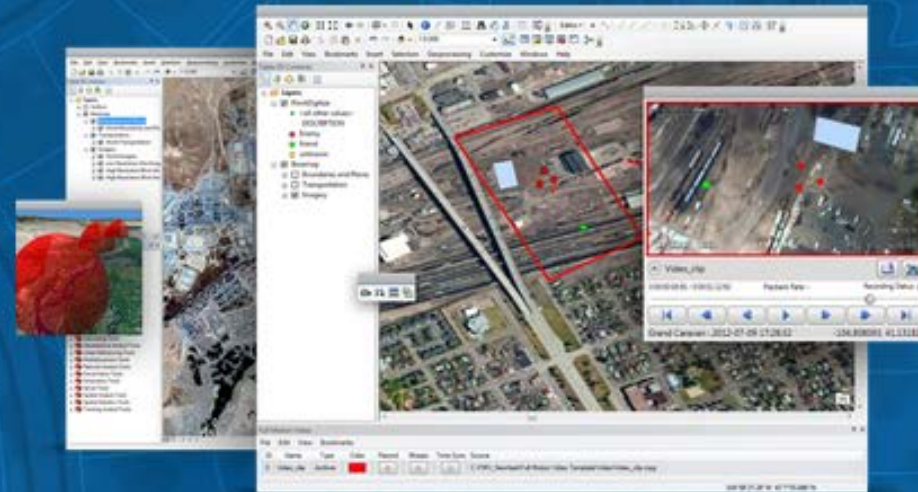
<http://solutions.arcgis.com/military>

ArcGIS for the Military

Use maps and apps to support deployed military forces in land, maritime, and domestic operations. For use by analysts, planners, and operational units.

TAKE A TOUR

FOLLOW



Resources

- **Blogs**

- <http://blogs.esri.com/esri/arcgis/category/subject-defense/>

- **Facebook**

- <https://www.facebook.com/Esri.Defense>

- **GeoNet**

- [https://geonet.esri.com/community/defense-and-intelligence/content?filterID=contentstatus\[published\]~objecttype~objecttype\[thread\]](https://geonet.esri.com/community/defense-and-intelligence/content?filterID=contentstatus[published]~objecttype~objecttype[thread])

- **GitHub**

- <https://github.com/Esri>

- **Solutions Website**

- <http://solutions.arcgis.com/military/>

- **Twitter**

- <https://twitter.com/EsriDefense>

- **Videos**

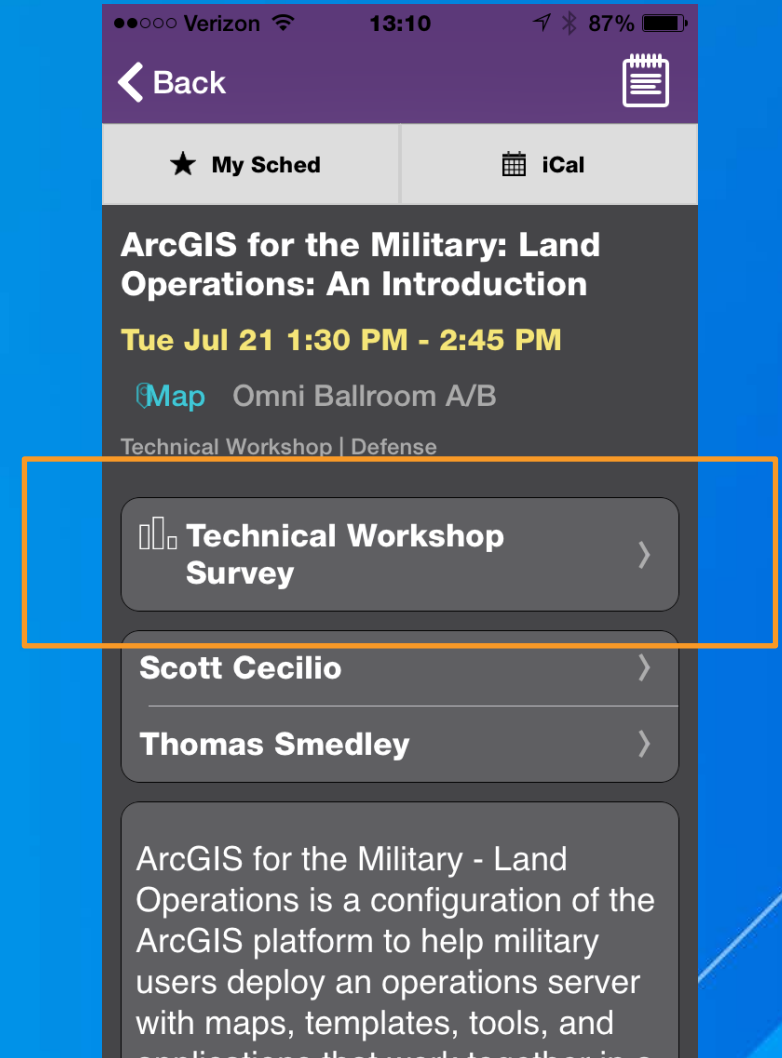
- <http://video.arcgis.com/series/48/defense-and-intelligence/order/desc>

Questions?

Session ID: 456

Thank you...

- Please fill out the session survey in your mobile app
- Select “ArcGIS for the Military: Land Operations” in the Mobile App
 - Use the Search Feature to quickly find this title- Land op
- Click “Technical Workshop Survey”
- Answer a few short questions and enter any comments





ESRI USER CONFERENCE