



ArcGIS for Local Government: An Overview

Christian Carlson
Scott Oppmann

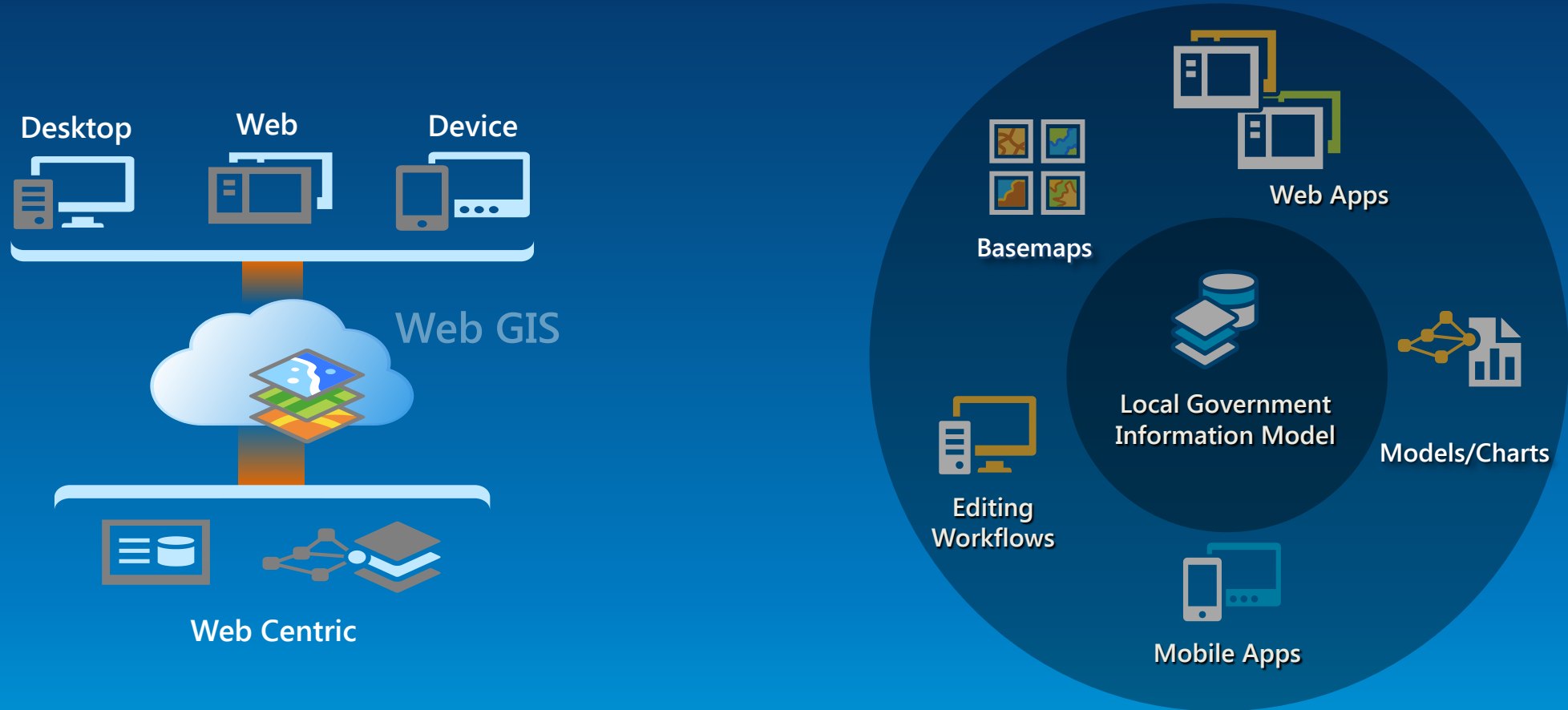
Agenda

- Introduction
- The drivers behind this initiative
- What is ArcGIS for Local Government
- What's Next?
- Your Feedback



Extending the platform with Solutions

Ready to use maps and apps that make implementation easier and sustainable



ArcGIS for Local Government





Common Goals



healthy communities

quality education

robust public services

diverse cultural opportunities

safe communities

sustainable environment

smart growth

thriving economy





Common Challenges

- Budget
- Doing More with Less
- Technical Breadth
- Domain Expertise
- Support for Existing Systems



A common experience....

2004

Florida GIS (ESRI) and Business Process Model in 2004
Hurricane Season

The majority of GIS users in ESRI are involved in following a process of support - staff and users. This is typical during a disaster or emergency event. Over the last 500 GB and the participating stakeholders were able to identify a common frequently requested support and maps requested by the Emergency Command Function team (ECF). Research was conducted to show the value of a study team of 10th grade students in a school in the U.S. The knowledge on value of the results is added.

1. Situation/Mission by County:

- a) Number of emergency centers
- b) State of emergency with 150 employees
- c) Emergency team
 - By general, there is a major incident in Dept. command, local government, and emergency services
- d) School District Counts
- e) Spatial and Network capabilities
- f) Number of employees by county
- g) Number of hours during day
- h) Number of employees (Emergency)
- i) Other

2. Emergency Incident Information

- a) High in other counties
- b) Active and in-destination availability
- c) National and International
 - Customers
 - Damage assessment
- d) Critical incidents

3. Map of emergency information

Presented on Florida State GIS Center Hurricane Preparedness

Presented on Florida State GIS Center Hurricane Preparedness

Presented on Florida State GIS Center Hurricane Preparedness

Presented on Florida State GIS Center Hurricane Preparedness

2005

2005

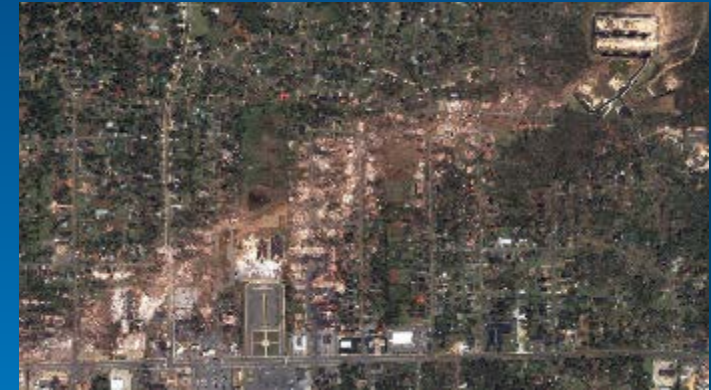
2005

2005

Hurricane Sandy



Southeast Tornadoes



Colorado Floods



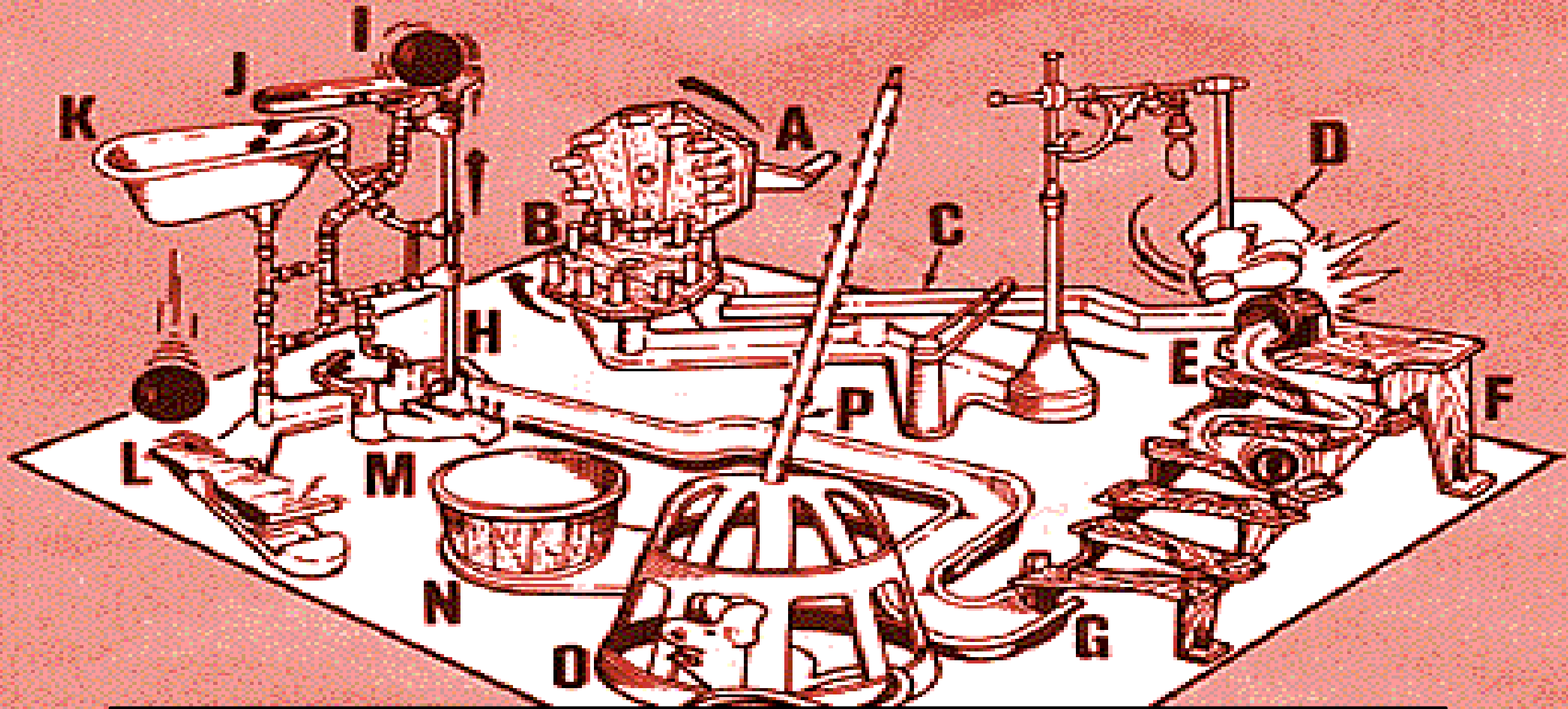
- Standard set of base maps
- Hardcopy map production
- Mobile damage assessment
- Common Operational Picture
- Public information maps and apps

“In the belief that every agency or government program business process is unique, program managers have historically favored the development of highly customized IT solutions over commercial off-the-shelf (COTS) products or cloud-based business services. *More often than not, the presumed uniqueness of a business process is overstated.* Taking the time to decompose and document processes with a business process management (BPM) methodology will identify business functions where variability is low and common practices (and software applications) can be shared.”

Top 10 Strategic Technology Trends for Smart Government 2013 – Business Process Management

Gartner

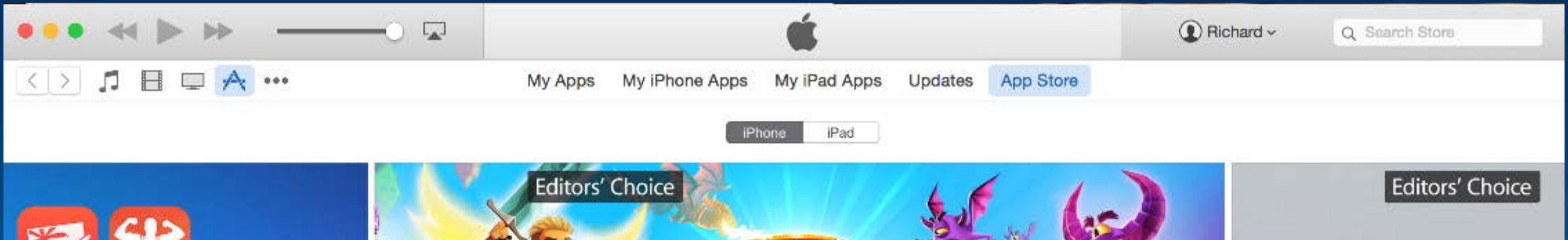
HOW THE MOUSE TRAP WORKS



Configure First and Customize Only When Necessary







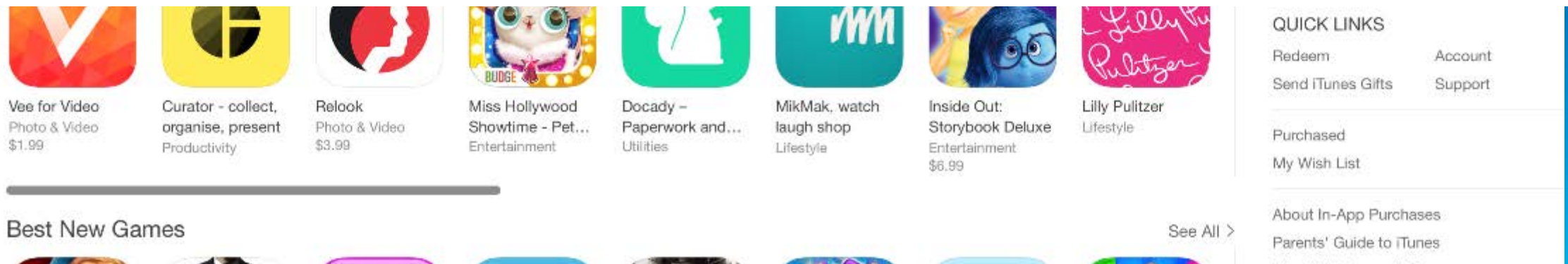
100 billion apps have been downloaded from the App Store
\$30 billion have been paid out to developers so far

850 apps are downloaded every second

The average person has 119 apps

1.5 million apps are now available on the App Store

195,000 educational apps are available on the App Store to customers



Realtor.com, Truila, Zillow....



What are we doing to help?



ArcGIS as a Platform

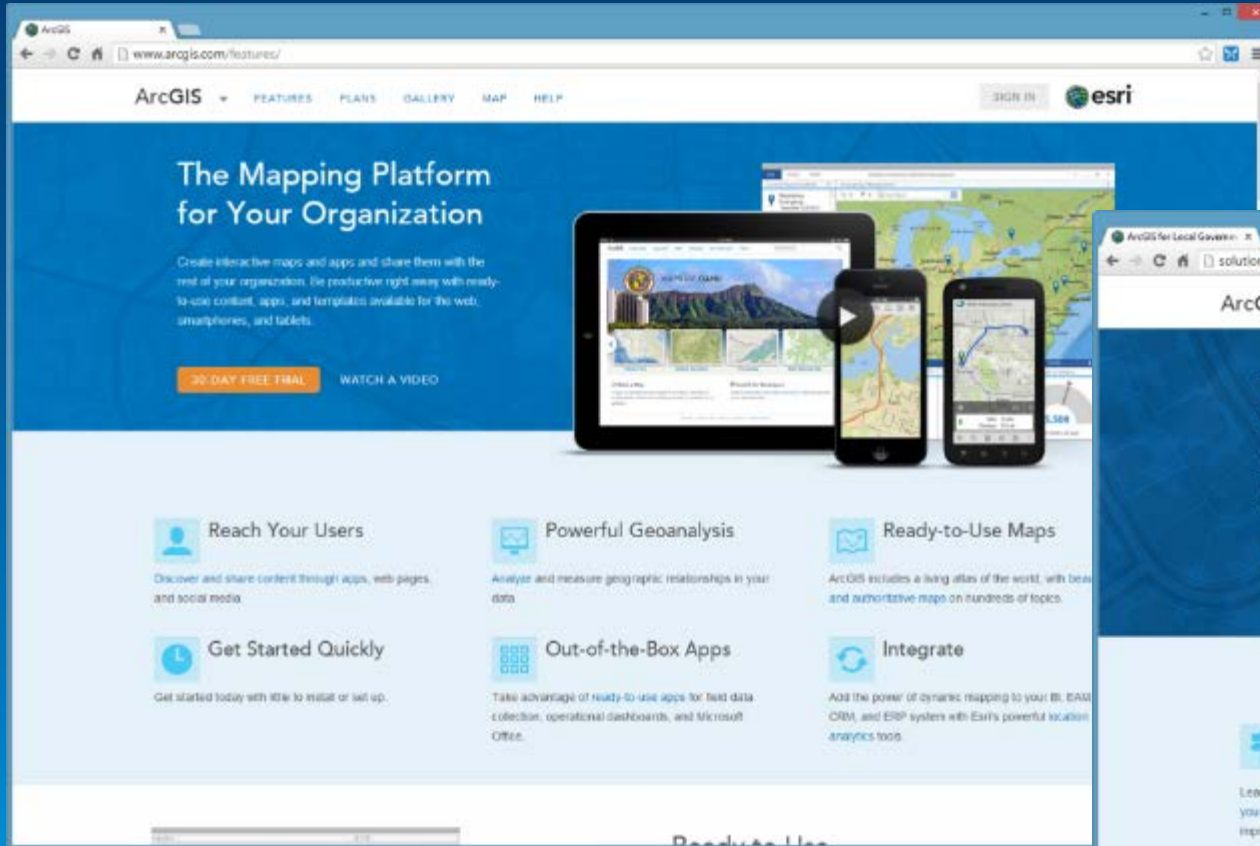
Simple, Open, and Configurable



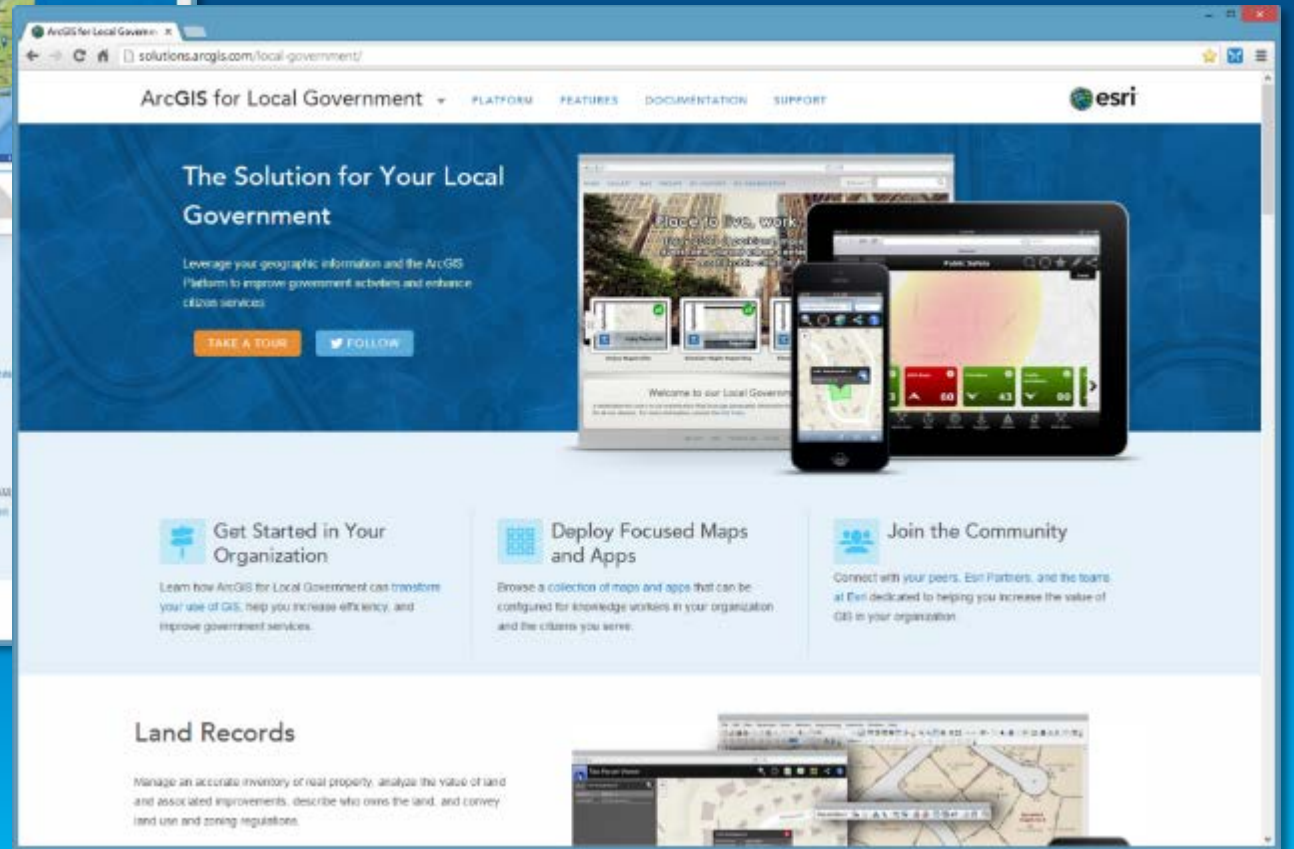
Making Mapping and GIS Available Across Your Organization

Transforming the Role of GIS

Turning Point



ArcGIS Online

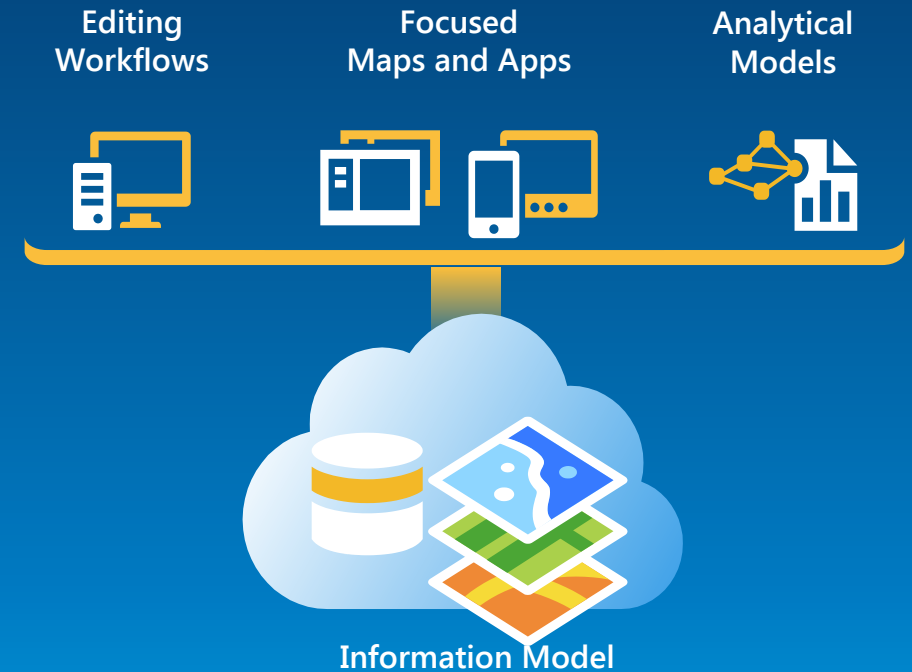


Solutions

ArcGIS for Local Government

Esri solutions for local government customers

- Series of useful maps and apps focused on local government work
 - Configurable and extensible
 - Freely available and fully supported
- Community of users
 - Best Practices / Implementation Support
- Network of Esri Services and Partner offerings
 - Help users implement, sustain and enhance



.....Available on-premise or in the cloud

ArcGIS for Local Government

Our mission is to help you.....

- Deliver maps and applications quickly throughout your organization
- Stay current with future releases / avoid legacy technology
- Deploy a geospatial platform that can be leveraged by many
- Leverage the collective knowledge of the entire community
- And do this with....less staff, budget, and technical expertise

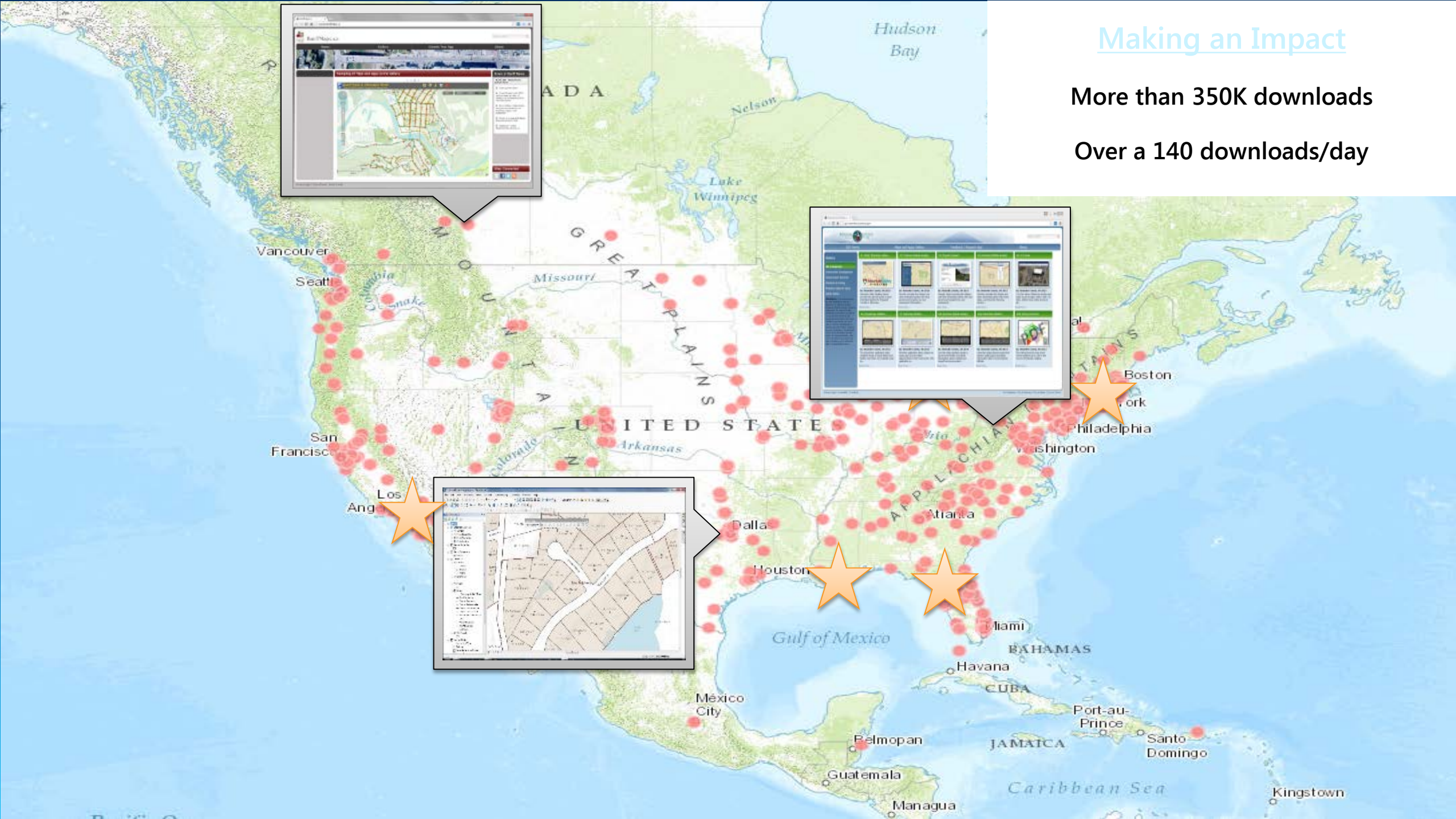
Common Implementation Approach

- Establish a Location Platform for your organization
 - Maintain accurate and up to date information
 - Make your data accessible
 - Integrate with key business systems
- Leverage the common patterns of GIS Implementation
 - Location Enablement
 - Data Management
 - Analysis
 - Operational Awareness
 - Constituent Engagement
 - Field Mobility
- Maximize your investment by delivering solutions that serve your organizations priorities

Making an Impact

More than 350K downloads

Over a 140 downloads/day



ArcGIS for Local Government

Public Works

- Campus Editing
- Campus Place Finder
- Citizen Problem Reporter
- SnowCOP
- My Government Services
- Railroad Crossing Inventory
- Street Tree Inventory
- Street Furniture Inventory
- Guardrail Inventory
- Pavement Marking Inventory

- Road Network Management
- Road Closures
- Plans and Drawings
- Maintenance Agreements
- Sidewalk Inventory
- Bridge Inventory
- Sign Inventory
- Signal Inventory
- Streetlight Inventory
- Public Parking
- Capital Project Planning



Land Records

- Tax Parcel Editing
- Deed Drafter
- Public Land Survey Editing
- Tax Parcel Map Book

- Tax Parcel Viewer
- Value Dashboard
- Tax Reverted Property
- Floodplain Inquiry
- Data Reviewer for Parcels



Elections

- Election Results
- Election Polling Places



Public Safety

- Flood Planning
- Special Event Planning
- Fire Station Wall Map
- Fire Run Book
- Pre-Incident Planning
- AED Inventory
- Home Safety Inspection
- Target Hazard Analysis
- Fire Hydrant Inspection
- Cell Phone Analysis
- Incident Mapping

- Field Interview Card
- Public Information Map
- Impact Summary Map
- Damage Assessment
- My Hazard Information
- EM Maps
- CAMEO Tools
- Evacuation Zones
- Emergency Assistance
- Health and Safety Reports



Water Utilities

- Water Distribution Map
- Sewer Network Map
- Stormwater Network Map
- Water Asset Locator
- Model Organization
- Network Editing
- DR for Water Utilities
- Map Change Request
- Proposed Water Design
- Water Leak Investigator
- Utility Isolation Trace
- Main Break Notification
- Drinking Water Advisory
- Outage Viewer
- Social Media Sentiment
- Capital Planning
- Capital Projects
- Pavement Coordination
- Water Service Request
- CSO Outfalls
- Sewer Service Lookup
- Backflow Inspection

- Hydrant Inspection
- Valve Exercise
- Inlet Inspection
- Field Notes
- Water Utility Mobile Map
- Manhole Inspection
- MS4 Inventory
- Illicit Discharge
- Site Violations
- Water Violations
- Water Restrictions
- Green Infrastructure
- Water Conservation
- SCADA Processor
- Customer Complaints
- High/Low Consumption
- Water Inventory Reports
- CCTV Processor
- Nighttime Flow Analysis
- Sub DMA
- Leak Logger
- Pressure Zone Analysis



Planning

- Site Selector
- Live, Work, Locate
- Park Locator
- Address Data Management
- Address Crowdsourcing
- Data Reviewer for Addresses

- Land Use Public Comment
- Land Use Public Notification
- Code Violation
- Events Calendar



Local Government

- Information Model
- Basemaps
- Data Reviewer for Basemaps
- Executive Dashboard
- Briefing Book

- Crowdsourcing
- Maps and Apps Gallery
- Community Parcels
- Community Addresses
- Model Organization

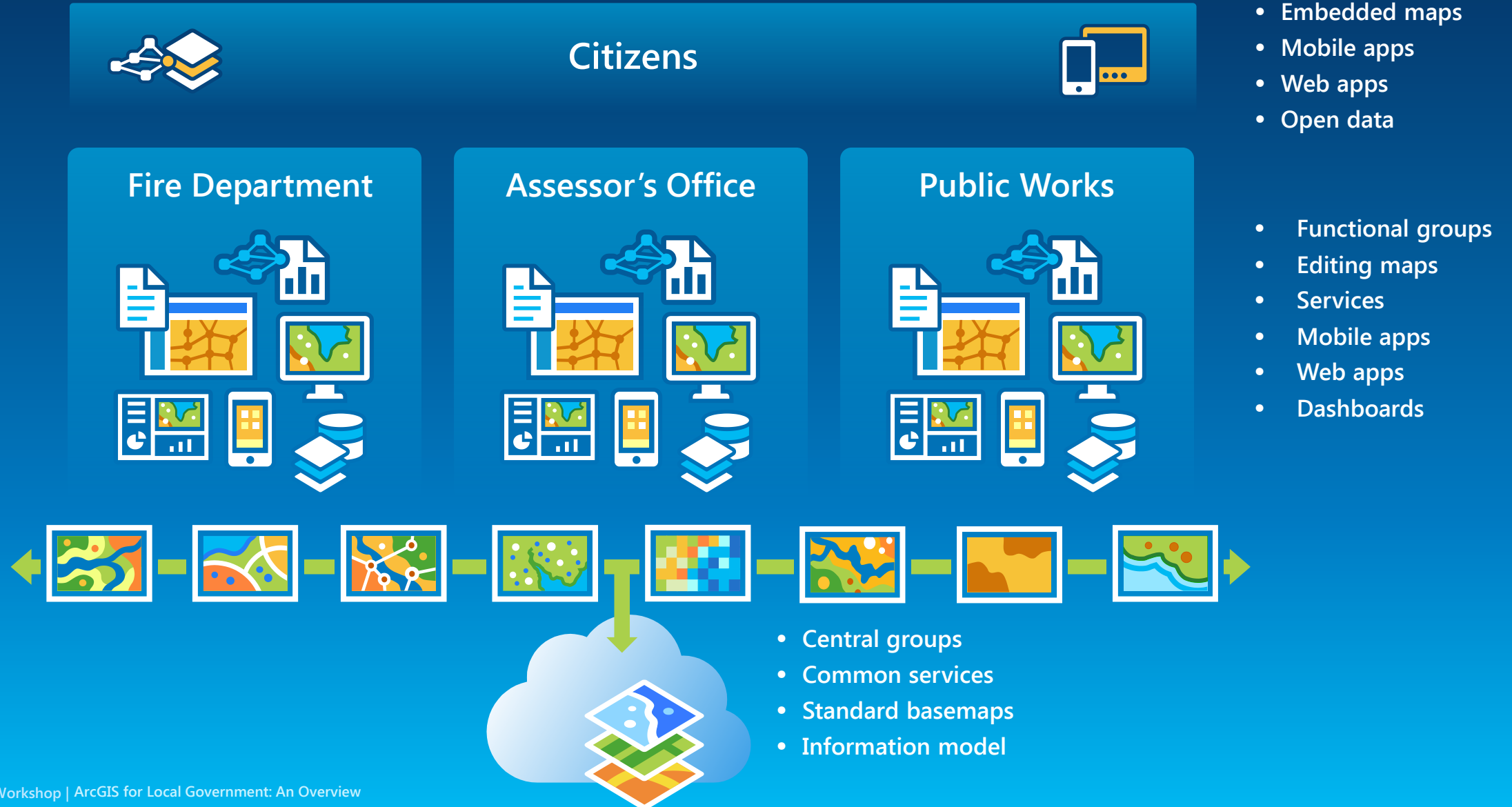


Show Me!

ArcGIS for Local Government

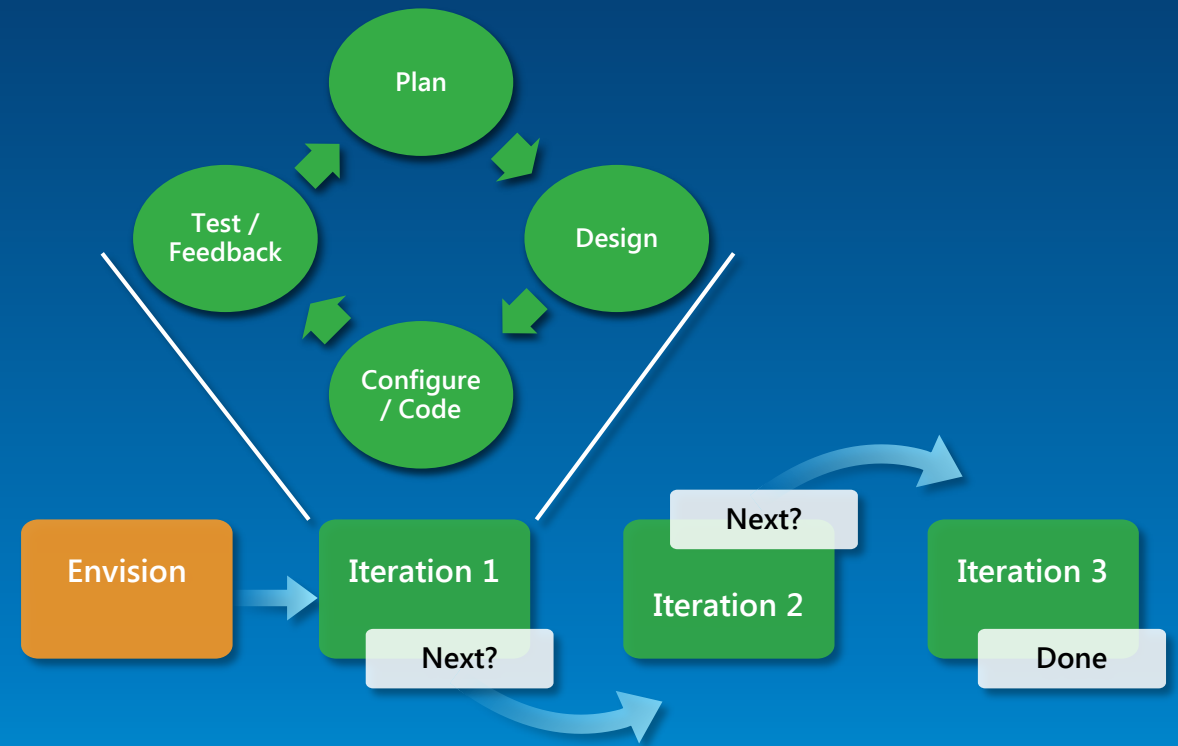


An ArcGIS System for Local Government



Configuration Patterns

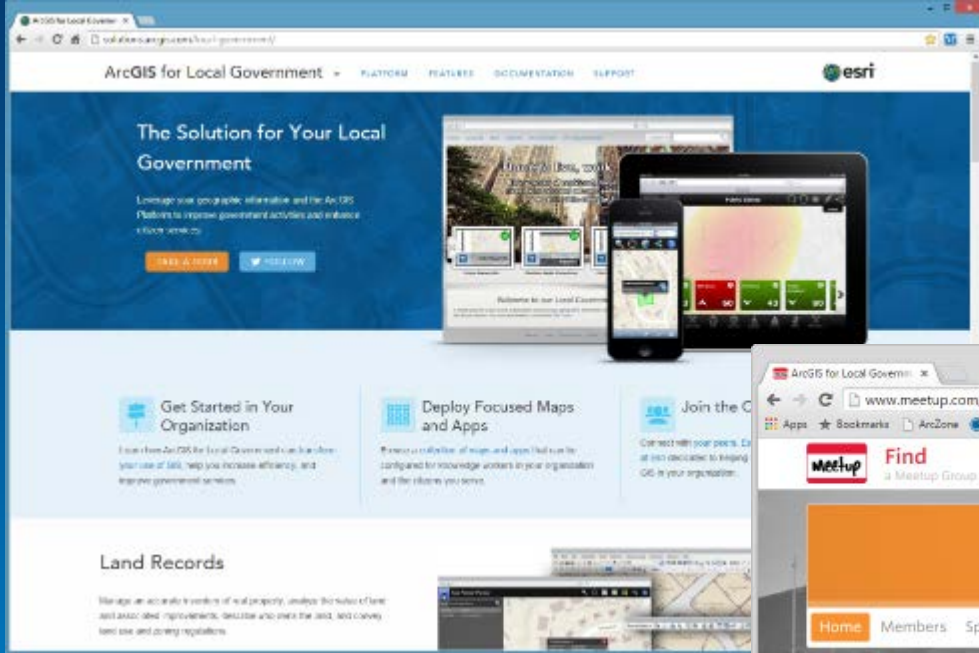
- Influential factors
 - COTS and configurable solutions strategy
 - Deployment time
 - Technical expertise
- Where do you start?
 - With your business requirements
 - Align them with maps and apps
 - Review system configuration patterns
- Three configuration patterns
 - Complete system adoption
 - Publish and adopt
 - Code and customize



...embrace an agile implementation approach

The Community

It's not just about the technology



Destination where government's can collaborate



Place where developers can contribute too



Ongoing dialog to share success stories and learn from others

What's Next?

ArcGIS for Local Government



July 2015 Release

- **New offerings**
 - Capital Project Planning, Public Land Survey Editing, Citizen Problem Reporter, Event Calendar, Crowdsourcing Polling
- **Enhancements to existing offerings**
 - Crowdsourcing Reporter, Crowdsourcing Manager, Briefing Book, Park Locator, Site Selector
- **Support and maintenance**
 - Add-ins, Toolboxes and Scripts, Information Model, Service Catalog, Symbology, Solution Site

Road Ahead

Post UC Plans

- **New maps and apps**
 - Elections – Polling Places, Election Results, My Representative
 - Land Records – Real Estate / Comp Finder, Land Bank, Next Generation Tax Parcel Viewer
 - Planning – Photo Survey, Regulatory / Development Review (3D)
 - Public Safety – Pre-Incident Planning, Special Events, Situational Awareness
 - Public Works – Signaled Intersections, Pavement Management, Capital Project Tracking
- **Incorporate additional platform offerings**
 - ArcGIS Pro, Web App Builder, GeoEvent Processor, ArcGIS Apps
- **Continued Community Engagement**
 - Meetups, videos, and solution site improvements
 - Expanded partner & professional services offerings

UC Events

- ArcGIS for Local Government Sessions
 - Seven different tech workshops
- Special Interest Group
 - Wednesday Lunch
- Solution Island
 - Focused conversations / support

Thank you...



<http://solutions.arcgis.com>



<http://meetup.com/ArcGIS-for-Local-Government/>



@ArcGISLocalGov

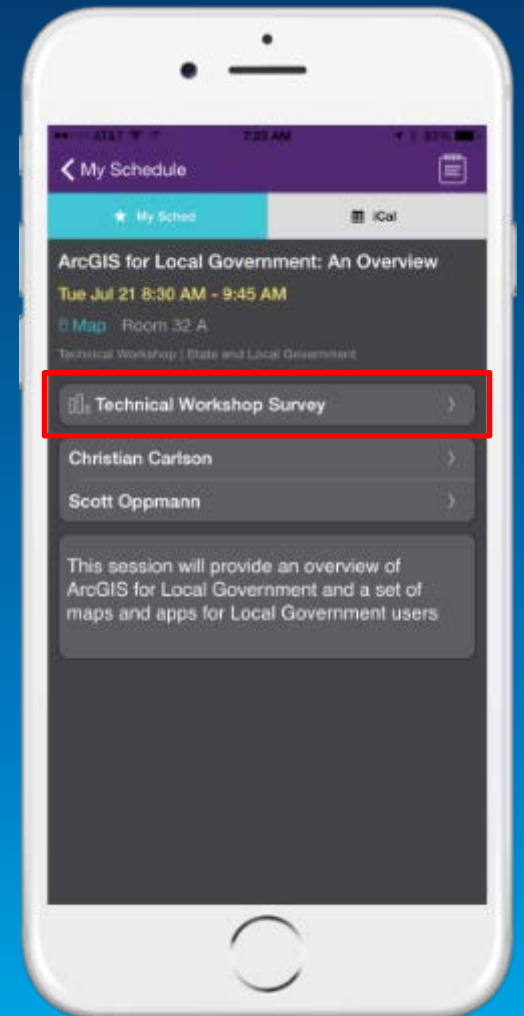


<http://esri.github.com>

Please fill out the session survey:

Mobile – Esri Events UC mobile app

Paper – Pick up and place in drop box





Understanding our world.