



# The ArcGIS Platform for Maritime Operations

Curt Hammill, John Fry

# Every Nation's Navy - Core Responsibilities

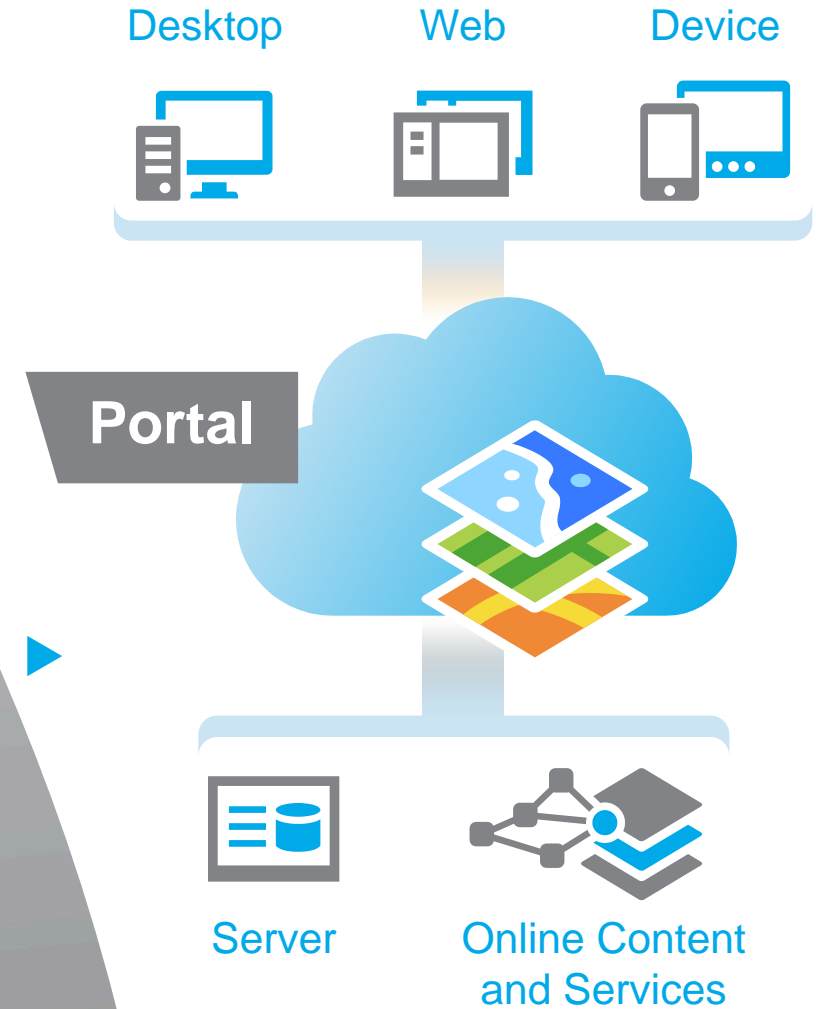


Adapted from U.S. Navy Documents:  
"A Cooperative Strategy for 21<sup>st</sup> Century Seapower"  
"Naval Operations Concept 2010"

# ArcGIS

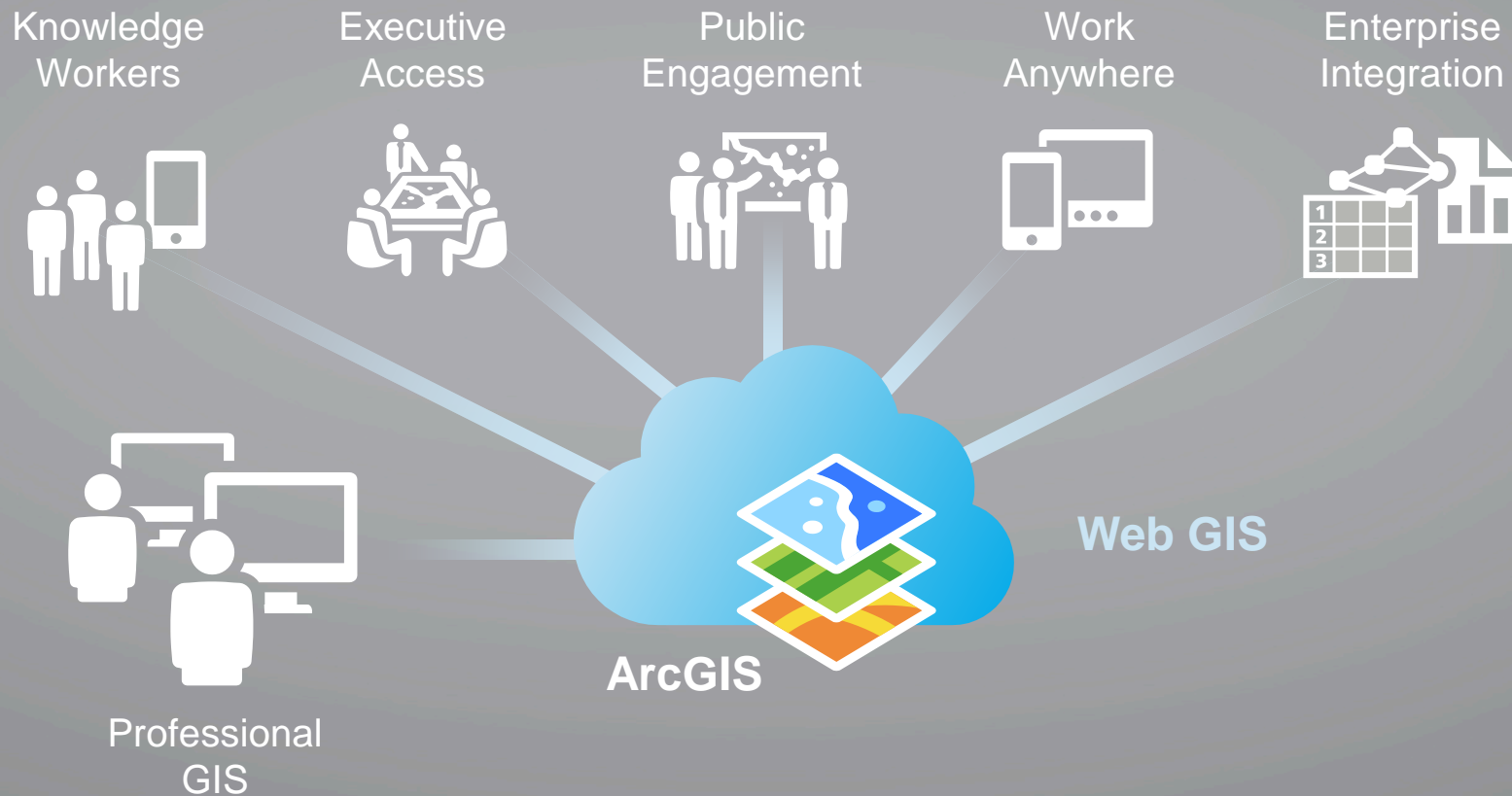
An Integrated  
Web GIS Platform

Providing mapping, analysis, data  
management, and collaboration



# ArcGIS is a Platform

► Making mapping and location aware apps available across your organization



# A Complete Location Platform

▶ Providing mapping, analysis, data management, and collaboration



# Geoenabled Activities for a Maritime Force

Maritime Organization	Base maps	Integration & Collaboration	Operational Awareness	Planning & C2	Analytics	Field Mobility	Enterprise Management
Main HQ	X	X	X	X	*	*	X
Fleet HQ	X	X	X	X	X	X	X
Support Agencies	X	X	X	X	X	X	X
Flagships	X	X	X	X	X		
Escort Ships	X	X	X	X	*		
Patrol Craft	X	X	X	*	*	X	
Aircraft	X	X	X	*	*	X	
Forces Ashore	X	X	X	X	X	X	X

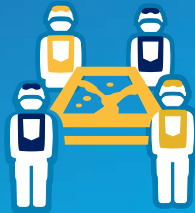
*Using a Common Geospatial Platform*

# The Fleet / Flagship Platform Vision

Maritime Analysts



Planners



Commanders and Staff



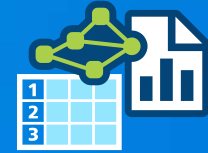
Afloat Teams



Ashore Teams



Enterprise Information



Portal



Maritime Foundation Data



Terrestrial Foundation Data



ArcGIS Maps & Apps



METOC & Coalition



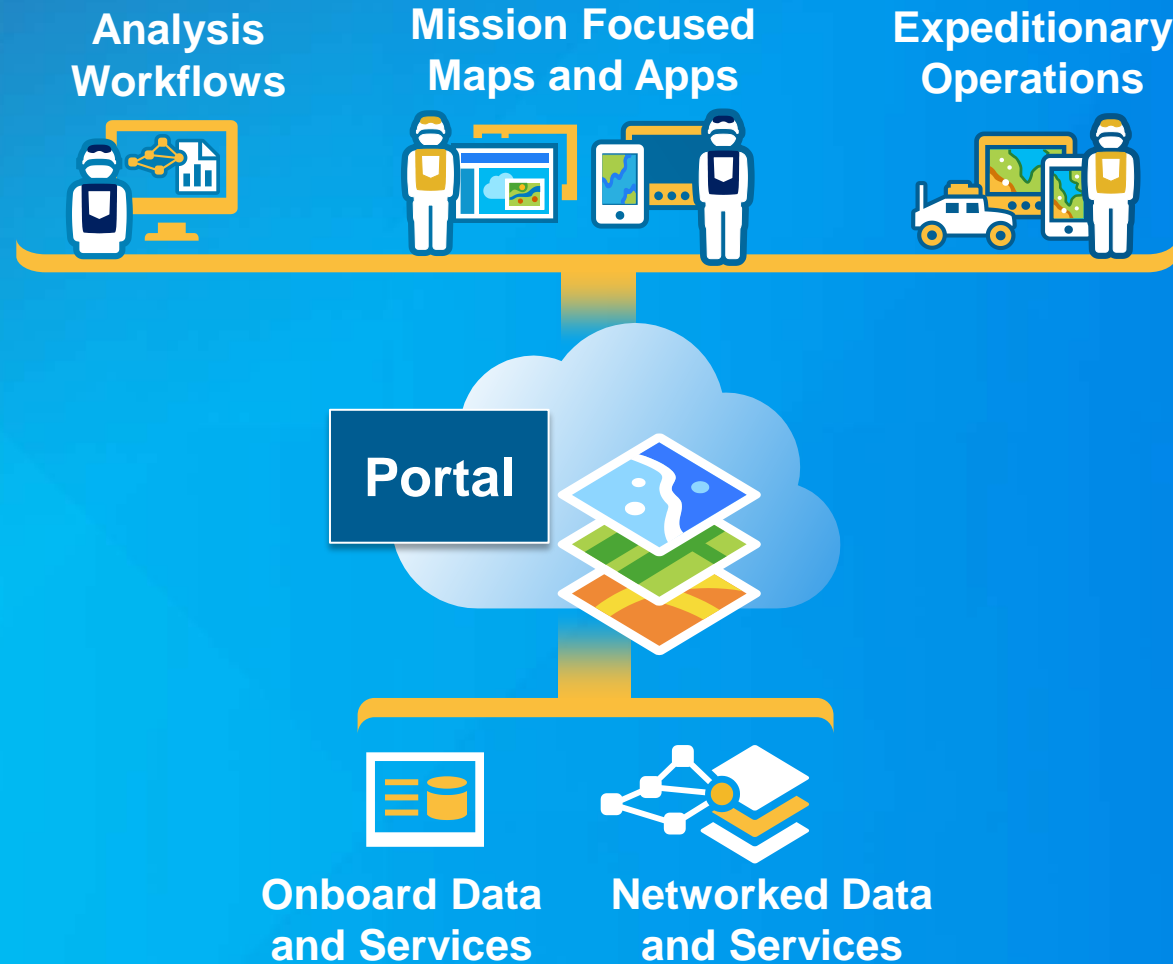
Intelligence & Inter-Agency



Data Streams

# ArcGIS Is a Platform for Maritime Operations

Simple to Use  
Integrated Operations  
Supports Decision-making



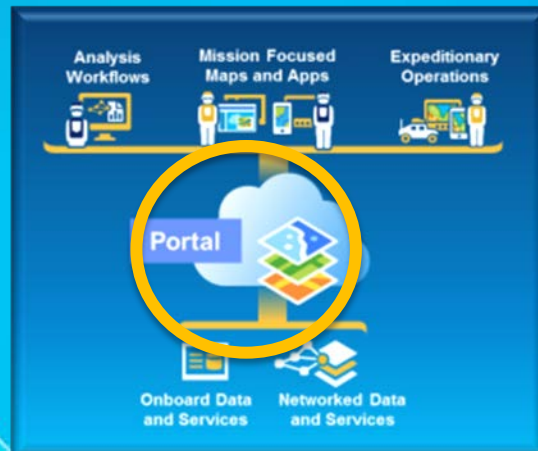


# GeoForms



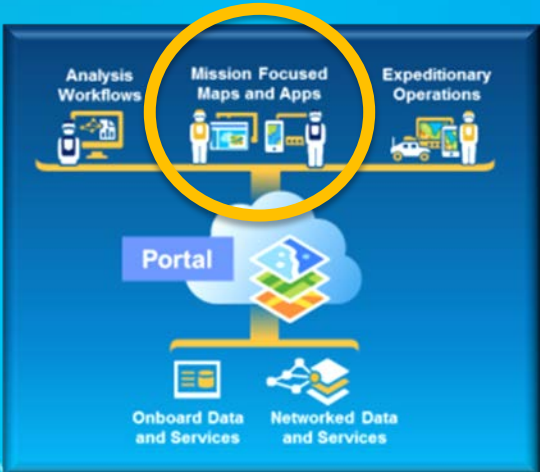
Portal

# Making Maps & Apps with Portal for ArcGIS



Portal App

# Storymap



Opportunities ~ salesforce... x Strikegroup Post-Deployment ... x +

https://dtcrugmo06.esri.com/arcgis/apps/StorytellingTextLegend/index.html?appid=e46832760550462abc2e4

## Strikegroup Post-Deployment Report

A recap of the major events of the Task Force deployment to the Middle East supporting m

▶

Overview CCIR ASW Piracy

### Task Force Tour

The Task Force embarked NAVSTA Norfolk in the beginning of 2014 to conduct maritime security operations in the Middle East. The mission was in support of initiatives to thwart terrorist activity in the Arabian Gulf, Gulf of Aden, and on the return part of the voyage, in the Bight of Africa.

The map shows the ship's route starting from the North American Basin, passing through the Sargasso Sea, and heading towards the Bight of Africa. Key geographical features include the Labrador Sea, North American Basin, Sargasso Sea, Caribbean Sea, and the Mid-Atlantic Ridge. A scale bar at the bottom indicates 0, 500, and 1000 miles.

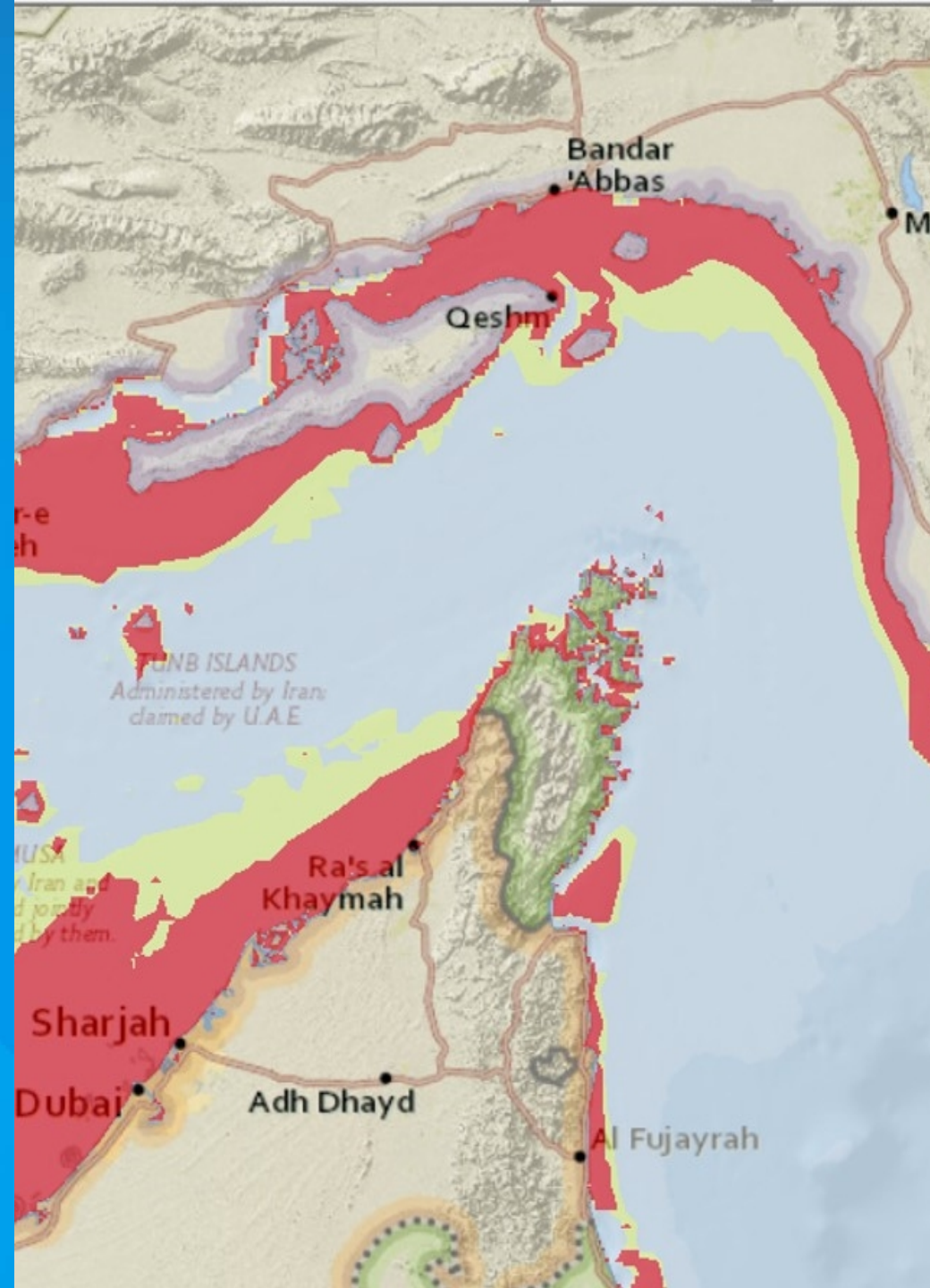
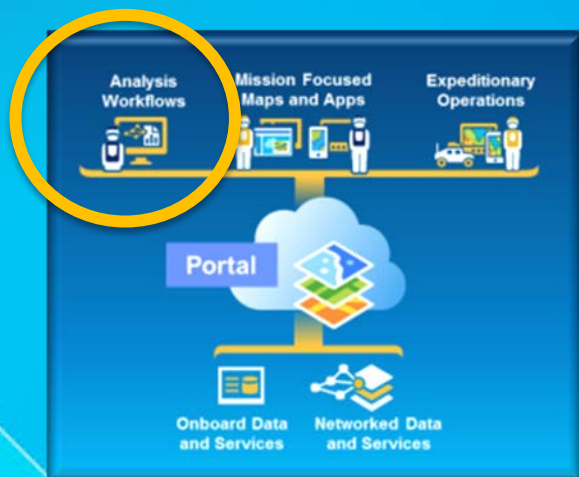
### LEGEND

**Location**

- Ship Location
- Underway
- Event
- Major Event

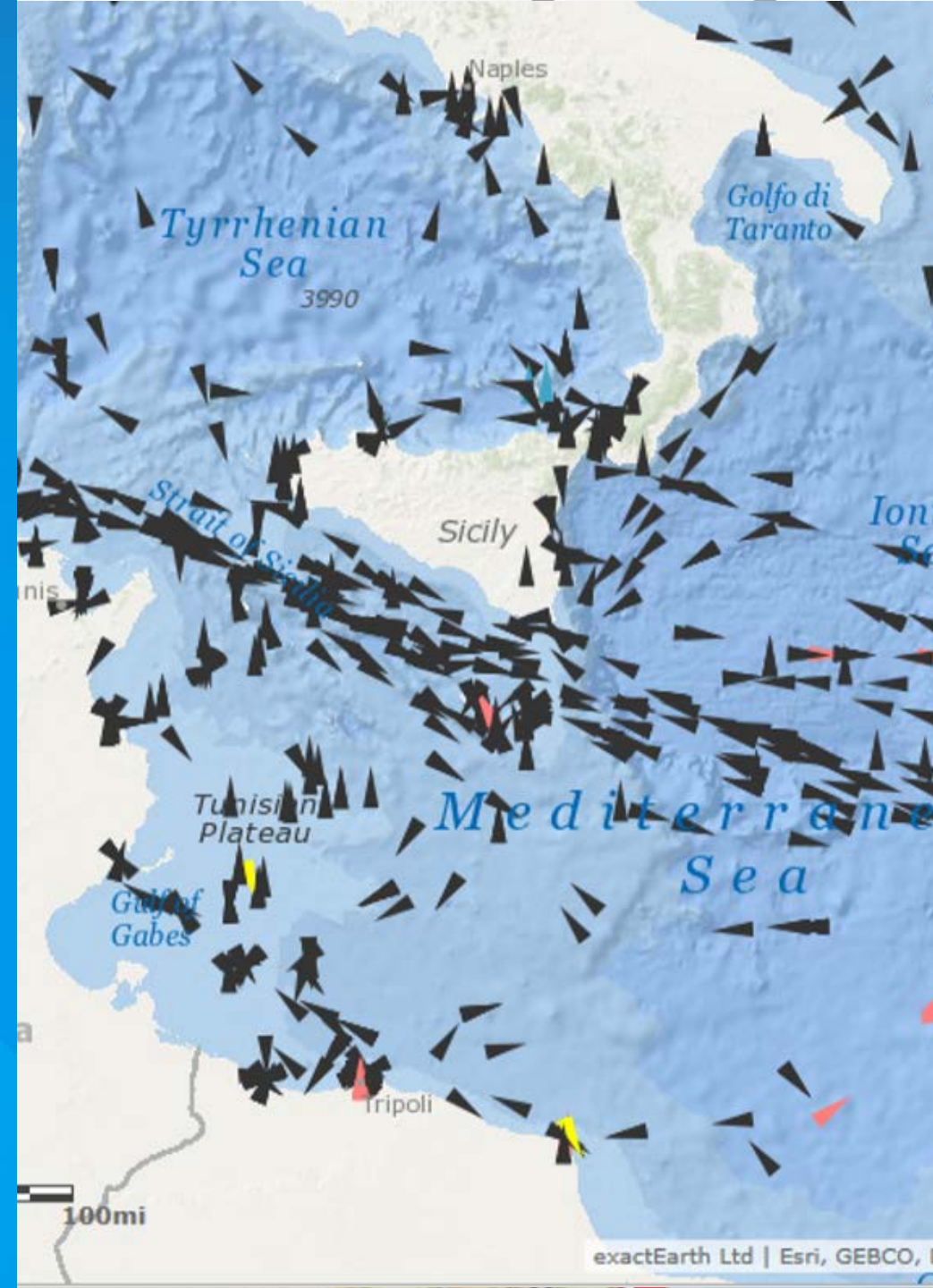
Desktop

# Maritime Decision Aids



Web App

# Maritime Decision Apps



Portal App

# Esri Maps for Office Esri Maps for SharePoint



M\_GOA\_28AUG12 (DEMO).xlsx - Microsoft Excel

File Layer Enrich Sign Share Update Create Copy Help  
ge Details Layer Out Layer Shared Map Slide Image Help  
ArcGIS Share Share Share

	F	L	M
▼ Desc1		Latitude	Longitude
	BANGLADESH: An unidentified bulk ca	21.70833	89.915
	YEMEN: An unidentified cargo ship re	14.57667	49.5583333
		17.34861	40.2677778
		22.31667	91.8166667
		13.75	49.8333333
		13.41667	47.5
		21.08083	38.3113889
		21.535	90.3333333
		24.72667	61.9166667
		21.09778	38.3416667
		21.56167	91.5916667
		14.7	50.9333333
		12.45	44.7
		8.1	76.7166667
		29.9	48.7
		8.205	76.7733333
		20.25833	71.4516667
		15.59833	55.6883333
		13.095	80.375
		12.56667	51.6166667
		13.1	80.3666667

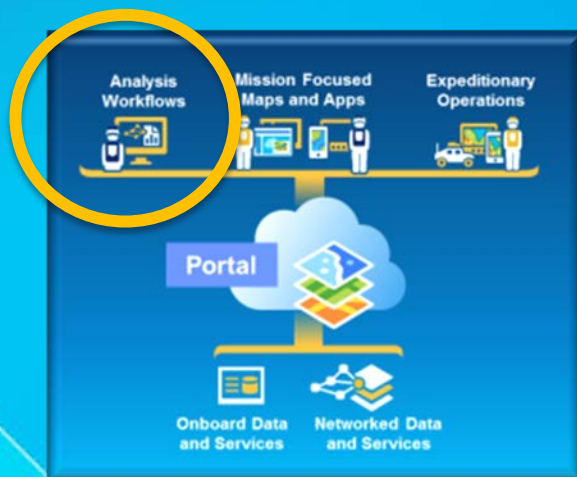
of Aden

POWERED BY esri

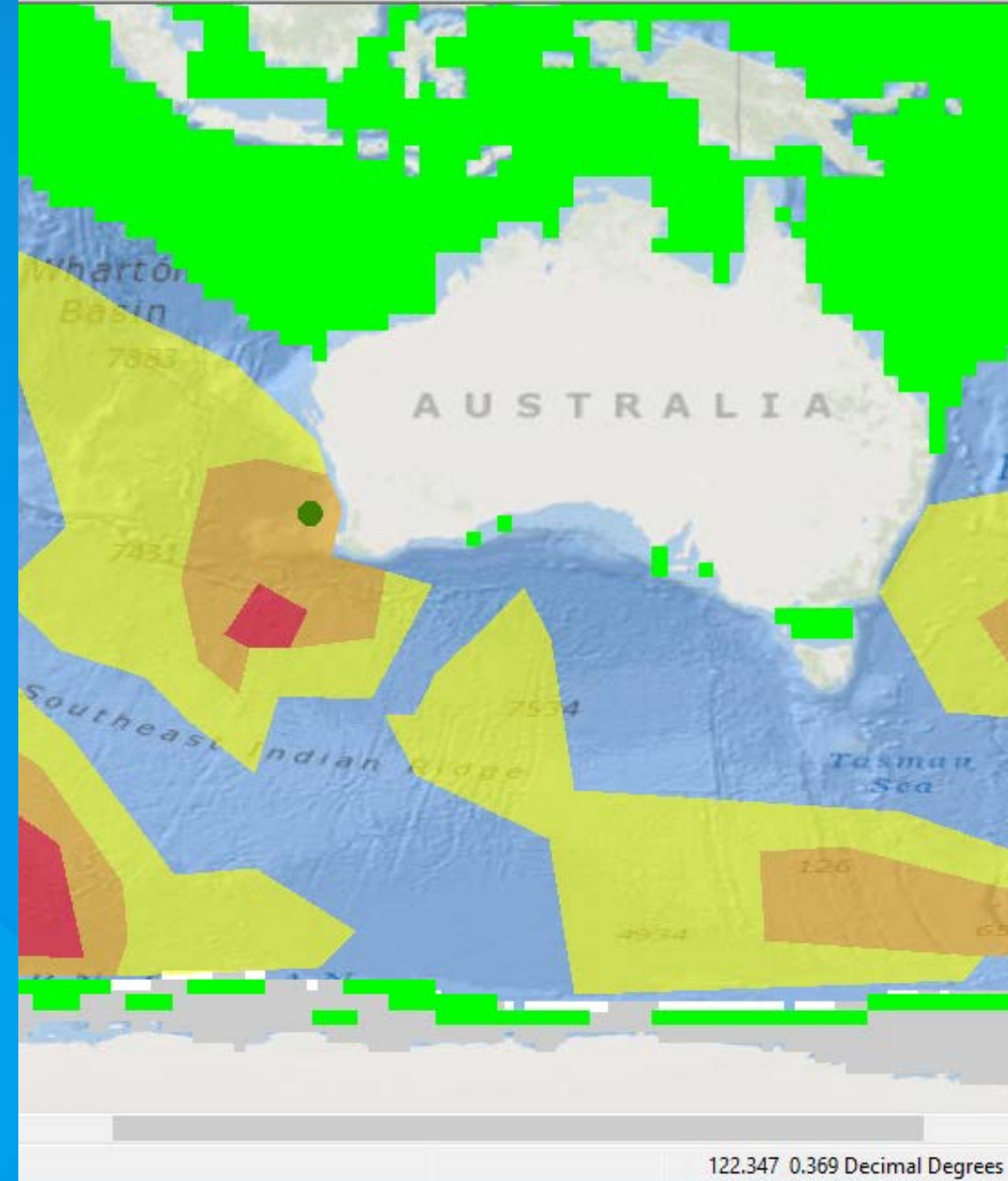
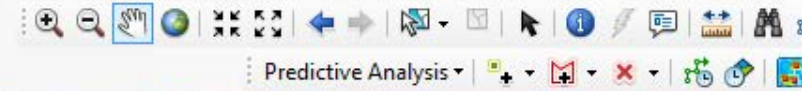
INDIA: Unidentified bulk carrier report

Desktop

# METOC Analytics

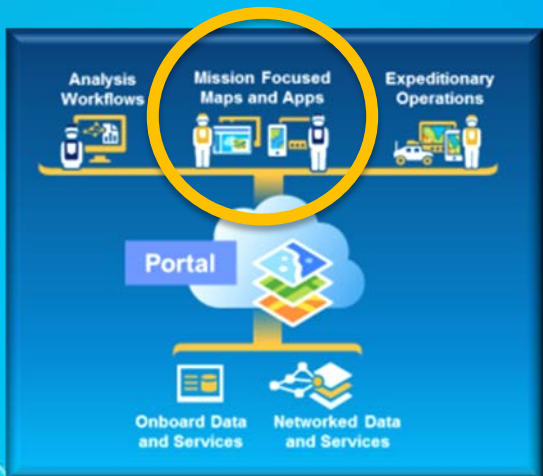


ArcMap



Portal App

# Operational Picture with Dashboard App

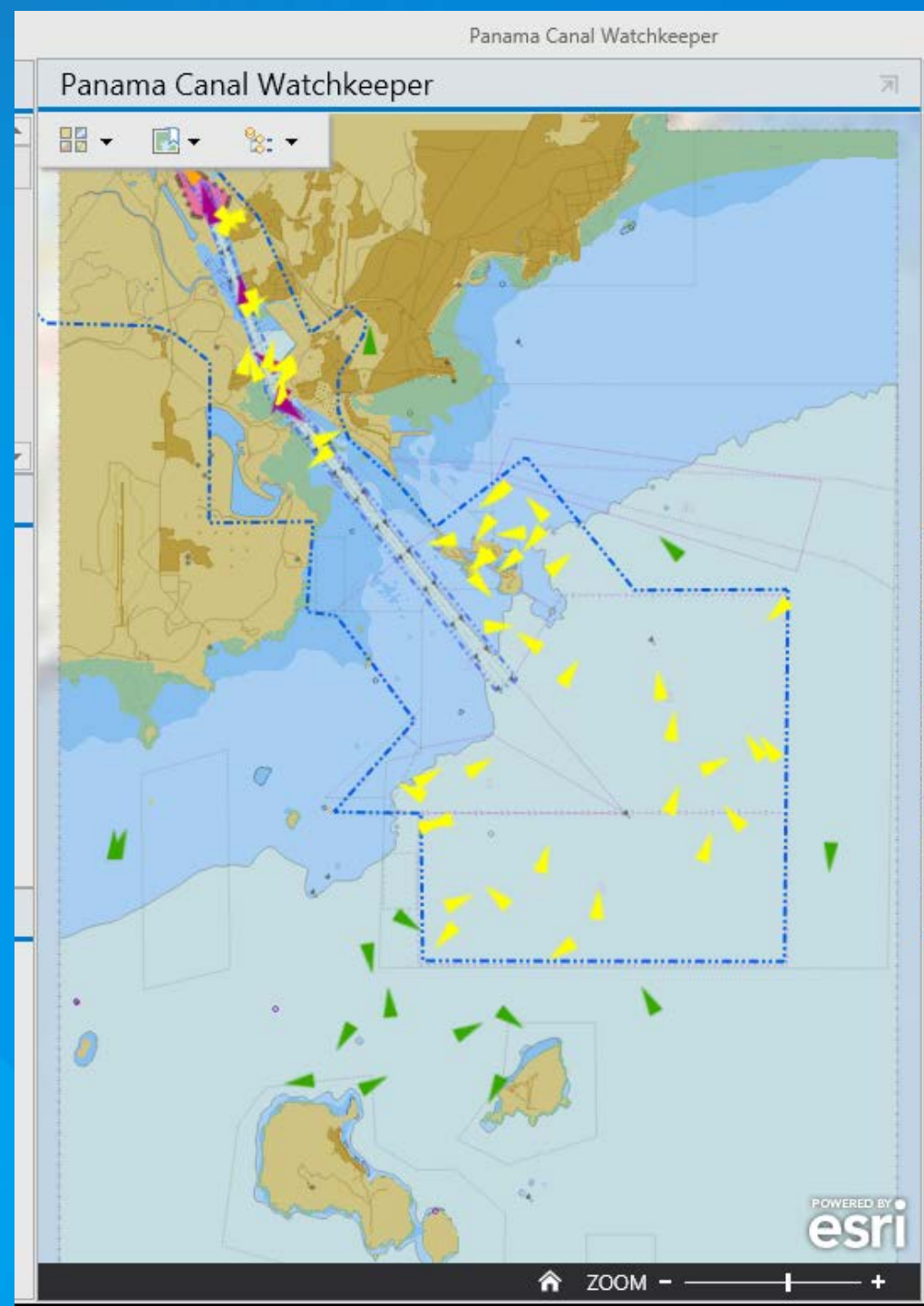
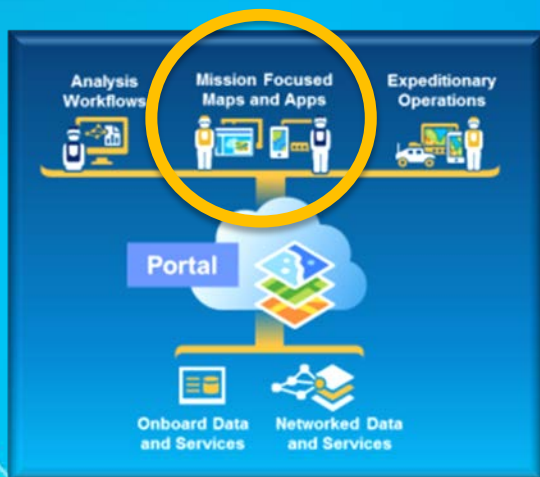


The screenshot displays a web-based dashboard interface. On the left, a map titled 'Panama Canal Gatún Locks' shows the Atlantic locks area with several red and yellow markers. Below it is another map titled 'Panama Canal Miraflores Locks' showing the Pacific locks area with red markers. On the right side, there are three satellite image windows: 'Gatún Locks - Hi Res', 'Gatún Locks', and 'Miraflores Locks - Hi Res'. The 'Gatún Locks - Hi Res' image shows a large industrial facility with a long pier. The 'Gatún Locks' image shows a large ship docked at a pier with many containers. The 'Miraflores Locks - Hi Res' image shows a long pier extending into the water. The 'Miraflores Locks' image shows a large ship docked at a pier. The dashboard includes zoom controls and an 'esri' logo at the bottom of each map window.



GeoEvent

# Real-time Data Streams



# The ArcGIS Platform Supports All Maritime Communities



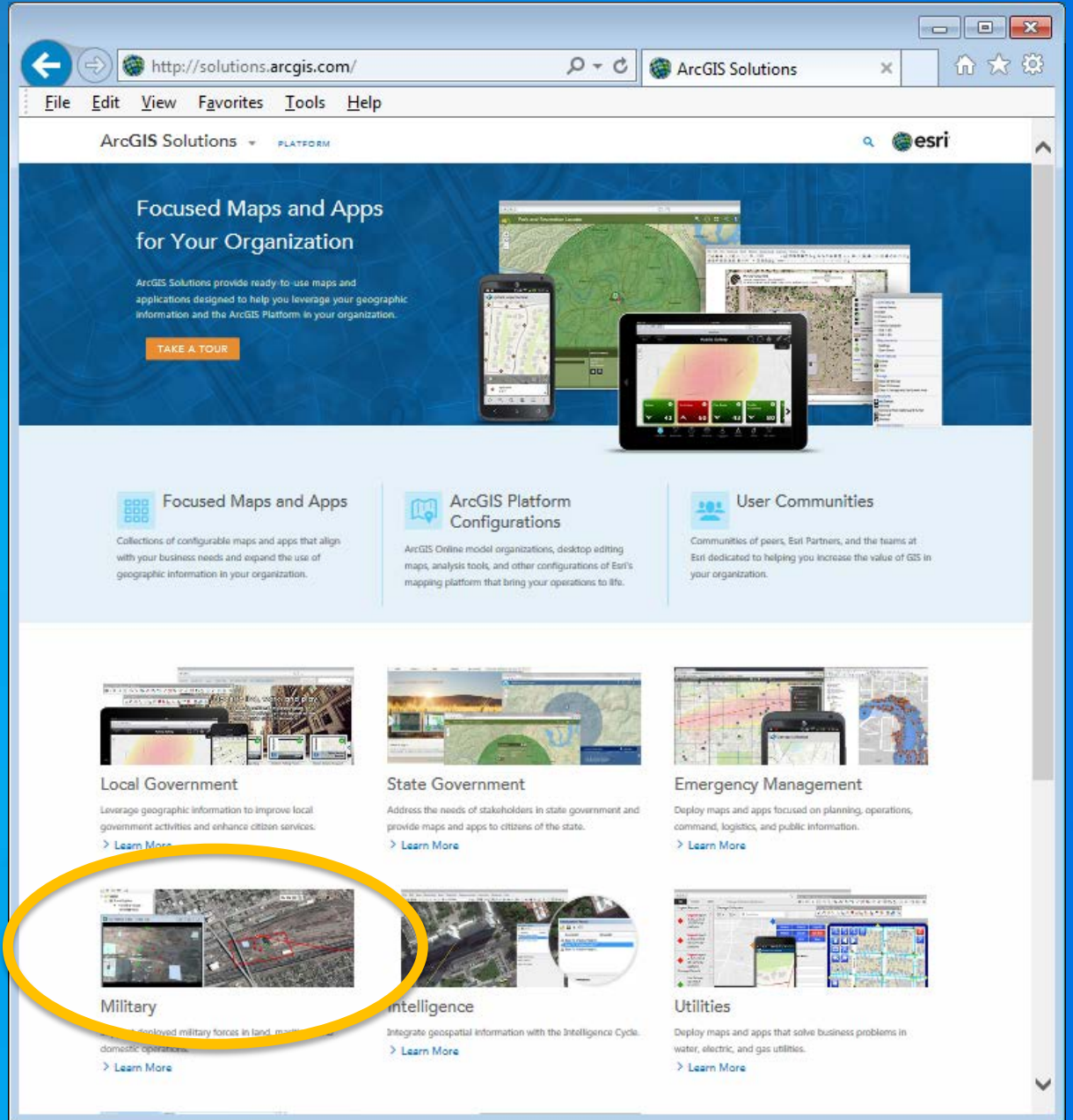
... Providing a Common Platform For Everyone

Want more?

<https://github.com/esri>



[solutions.arcgis.com](http://solutions.arcgis.com)



The screenshot shows the ArcGIS Solutions website in a browser window. The URL is <http://solutions.arcgis.com/>. The page features a main banner with the heading "Focused Maps and Apps for Your Organization" and a "TAKE A TOUR" button. Below the banner are three main sections: "Focused Maps and Apps", "ArcGIS Platform Configurations", and "User Communities". The lower part of the page is organized into a grid of industry-specific solutions, including "Local Government", "State Government", "Emergency Management", "Military", "Intelligence", and "Utilities". Each section includes a representative image, a brief description, and a "Learn More" link. A yellow oval highlights the "Military" and "Intelligence" sections.



Understanding our world.