



Land Records Maps and Apps for State and Local Governments

Chris Buscaglia
Scott Oppmann

Agenda

- Introduction
- Solution Offering
- What's Next
- Your Feedback



ArcGIS as a Platform

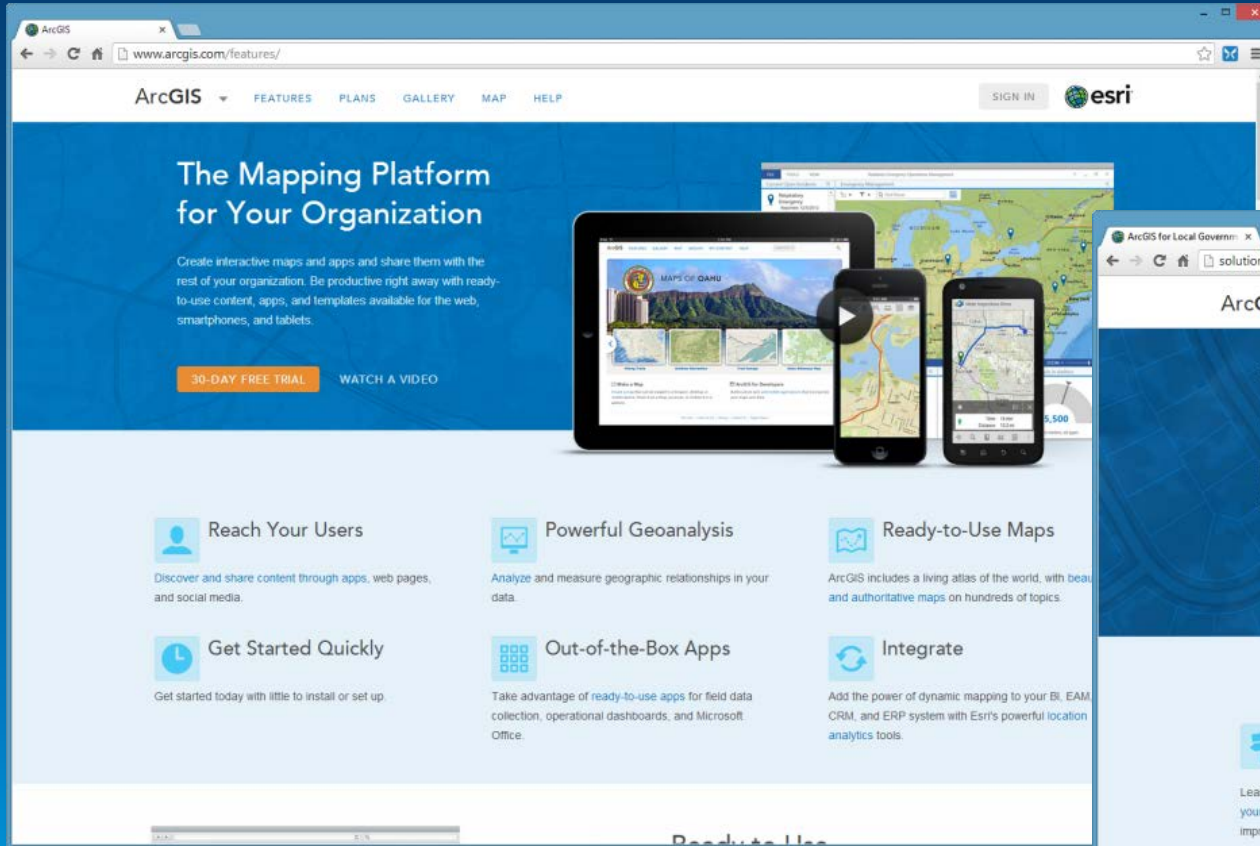
Simple, Open, and Configurable



Making Mapping and GIS Available Across Your Organization

Transforming the Role of GIS

Turning Point



ArcGIS

www.arcgis.com/features/

ArcGIS | FEATURES | PLANS | GALLERY | MAP | HELP | SIGN IN | esri

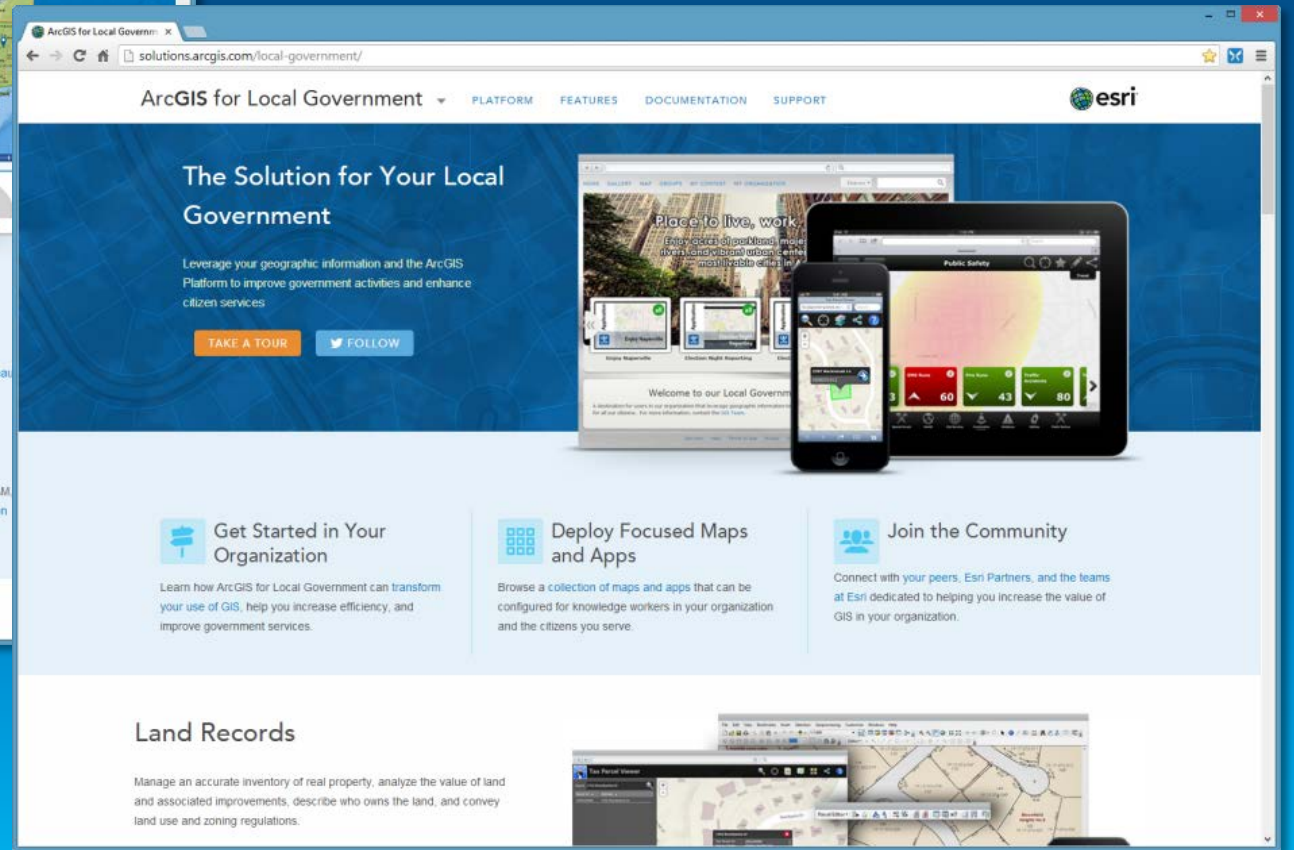
The Mapping Platform for Your Organization

Create interactive maps and apps and share them with the rest of your organization. Be productive right away with ready-to-use content, apps, and templates available for the web, smartphones, and tablets.

30-DAY FREE TRIAL | WATCH A VIDEO

- Reach Your Users**
Discover and share content through apps, web pages, and social media.
- Powerful Geoanalysis**
Analyze and measure geographic relationships in your data.
- Ready-to-Use Maps**
ArcGIS includes a living atlas of the world, with beautiful and authoritative maps on hundreds of topics.
- Get Started Quickly**
Get started today with little to install or set up.
- Out-of-the-Box Apps**
Take advantage of ready-to-use apps for field data collection, operational dashboards, and Microsoft Office.
- Integrate**
Add the power of dynamic mapping to your BI, EAM, CRM, and ERP system with Esri's powerful location analytics tools.

ArcGIS Online



ArcGIS for Local Government

solutions.arcgis.com/local-government/

ArcGIS for Local Government | PLATFORM | FEATURES | DOCUMENTATION | SUPPORT | esri

The Solution for Your Local Government

Leverage your geographic information and the ArcGIS Platform to improve government activities and enhance citizen services.

TAKE A TOUR | FOLLOW

- Get Started in Your Organization**
Learn how ArcGIS for Local Government can transform your use of GIS, help you increase efficiency, and improve government services.
- Deploy Focused Maps and Apps**
Browse a collection of maps and apps that can be configured for knowledge workers in your organization and the citizens you serve.
- Join the Community**
Connect with your peers, Esri Partners, and the teams at Esri dedicated to helping you increase the value of GIS in your organization.

Land Records

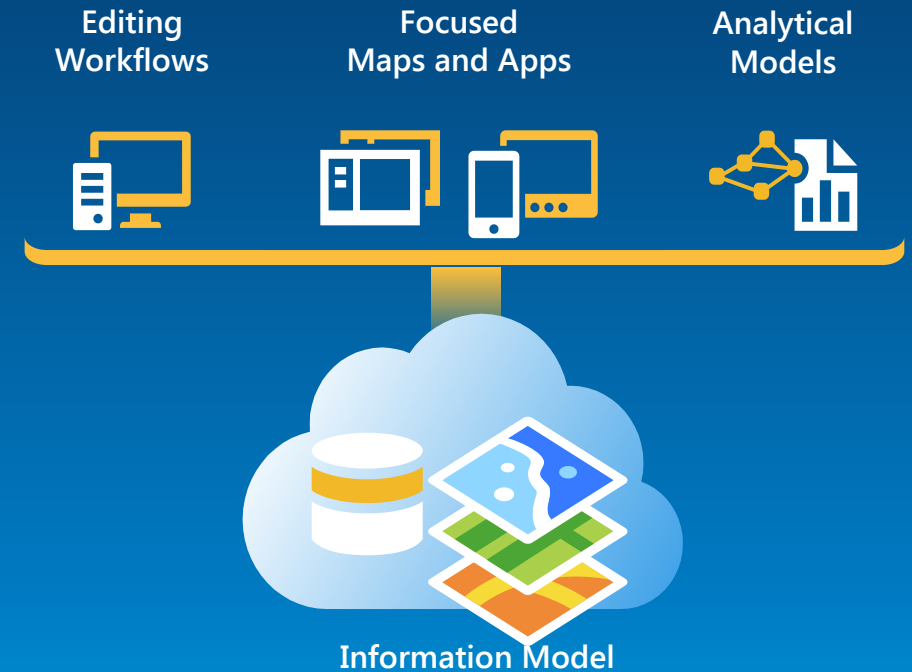
Manage an accurate inventory of real property, analyze the value of land and associated improvements, describe who owns the land, and convey land use and zoning regulations.

Solutions

ArcGIS for State and Local Government

Esri solutions for government customers

- Series of useful maps and apps focused on government work
 - Configurable and extensible
 - Freely available and fully supported
- Community of users
 - Best Practices / Implementation Support
- Network of Esri Services and Partner offerings
 - Help users implement, sustain and enhance



.....Available on-premise or in the cloud

ArcGIS for State and Local Government

Our mission is to help you.....

- Deliver maps and applications quickly throughout your organization
- Stay current with future releases / avoid legacy technology
- Deploy a geospatial platform that can be leveraged by many
- Leverage the collective knowledge of the entire community
- And do this with....less staff, budget, and technical expertise

State and Local Government

Land Records Maps and Apps



Today's Land Records Business Requirements

Expectations and business requirements have changed

- Historically, GIS has been used to support mapping
 - Limited visualization and data sharing
- Today's business environment has changed these requirements.....



Transforming Land Records GIS

Providing capabilities for key business requirements

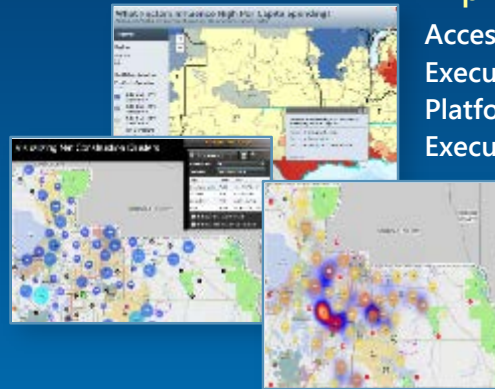
Find New Revenue

Unpermitted Construction
Missing Real Property
Missing Addresses



Improve Public Relations

Accessible Authoritative Data
Executive Access to Business Data
Platform for Citizen Collaboration
Executive Awareness of Local Issues



Improve Government Operations

Emergency Management
Public Safety
Planning and Community Development
Code Enforcement and Permit Review



Reduce Appeals

Defensible Valuation Process
Dissemination of Authoritative Data
Public Access to Appraisal Information
Quality Control Process



Land Records Maps and Apps

Constituent Engagement

Tax Parcel Viewer
Public Notification

Floodplain Inquiry

Value Analysis

Value Analysis Dashboard
Tax Reverted Property

Photo Survey (Aug 2015)

Maintain Assessment Roll

Tax Parcel Editing
Deed Drafter
Tax Map Book

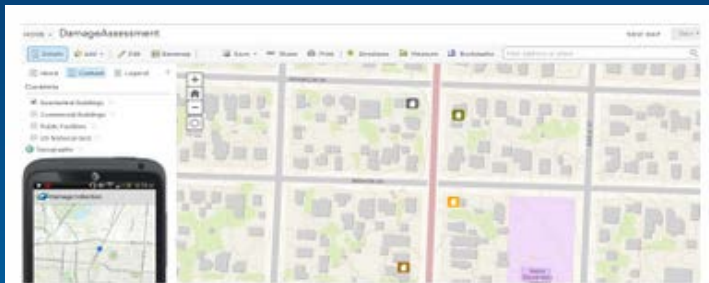
Public Land Survey Editing

Geo-enable Assessment and Tax Office

Model ArcGIS Online Organization
Community Parcels
Standard integration patterns (CAMA, Tax Receivables, etc.)

Land Records Maps and Apps

Collaborate with other stakeholders



Conduct Damage Assessments

The Damage Assessment map can be used by inspectors to conduct structural damage assessments in a connected or disconnected network environment.



Manage Address Information

A collection of maps used to manage road centerlines, site addresses, facilities, mailing addresses, and aggregate this information from authoritative sources for use by state and regional agencies.



Identify Target Hazards

The Target Hazard Analysis map can be used by fire personnel to identify properties that could result in a loss of life, or have a negative impact on the community, if a fire were to occur.

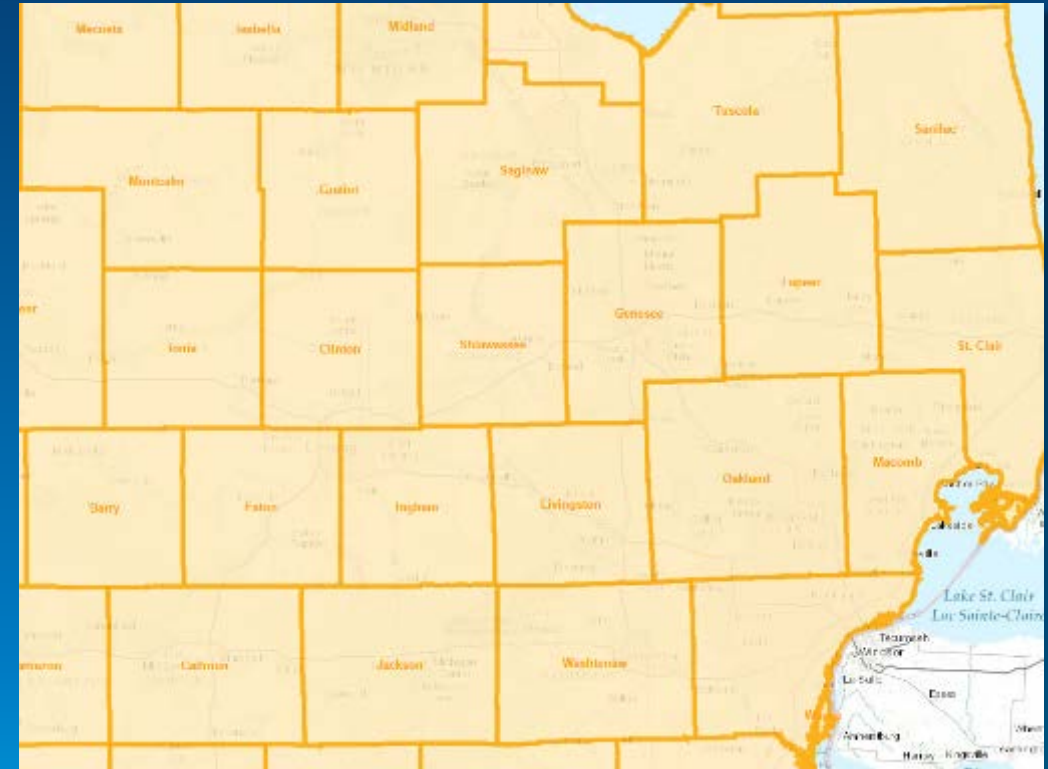
Land Records Maps and Apps

Supporting many community needs



State Governments

Federal and State Lands, Aggregate Local Data, Equalization Studies, Damage Assessment, etc.



Local Governments

Control Network, Real Property Roll, Value Analysis, Public Access, Damage Assessment, etc.

Show Me!

Land Records Maps and Apps



Communities

Simple Information Products



Showing property ownership for permitting and regulatory needs....



Showing property value for emergency management and revenue needs....



Showing property use for land use and economic development needs....



Community Parcels

Containing authoritative data from local data providers

Community Parcels

How does it come to life?



Authoritative parcel data from data custodians

Leverages Esri's parcel data management solution...
....and supports other data management workflows

Community Contributor Workflow

Ex. City to County, County to State

Step 1 : Configure Tool



- Single Input Parcel Layer
- Local FIPS code
- Fields to be mapped
- AGOL credentials
- Save settings (for future runs)

Step 2: Run Tool



- Run Manually – Ad-Hoc
- Schedule

Community Aggregator Workflow

Ex. County/State performs aggregation

Step 1 : Configure Field Mapper



- Single Input Parcel Layer
- Local FIPS code
- Fields to be mapped
- Save settings (for future runs)



Step 2 : Configure Aggregator



- Multiple Input Parcel Layers
- Save Settings (for future runs)

Step 3 : Run Tools



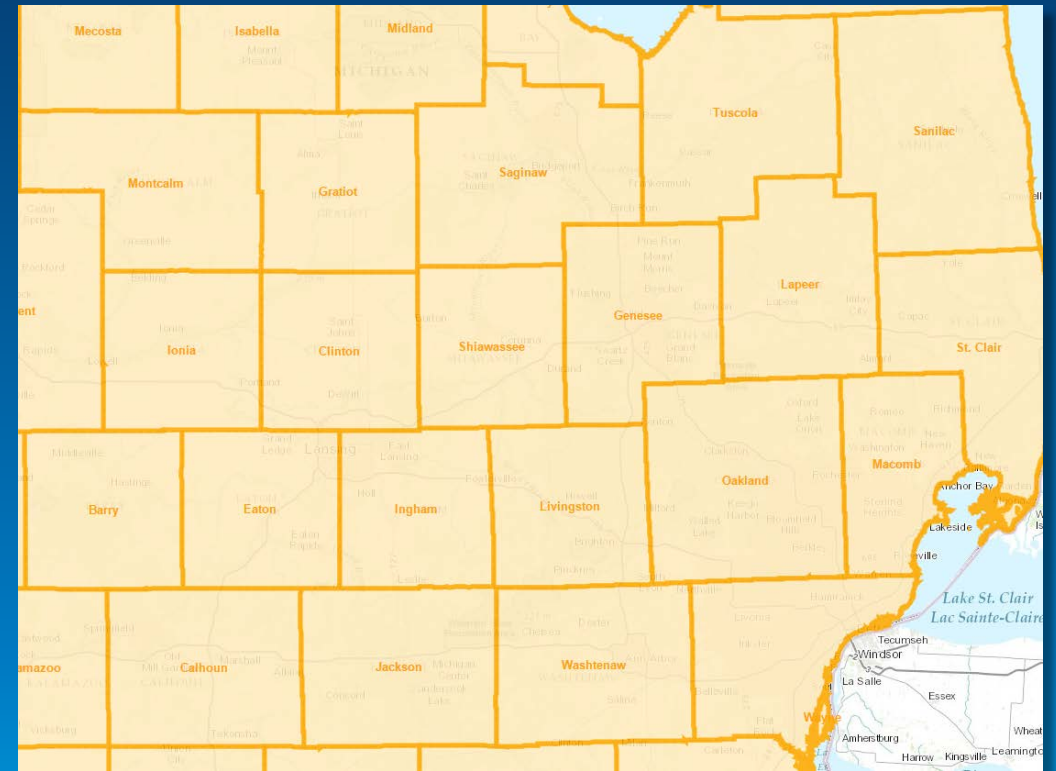
Land Records Maps and Apps

Supporting many community needs



State Governments

Federal and State Lands, Aggregate Local Data, Equalization Studies, Damage Assessment, etc.



Local Governments

Control Network, Real Property Roll, Value Analysis, Public Access, Damage Assessment, etc.

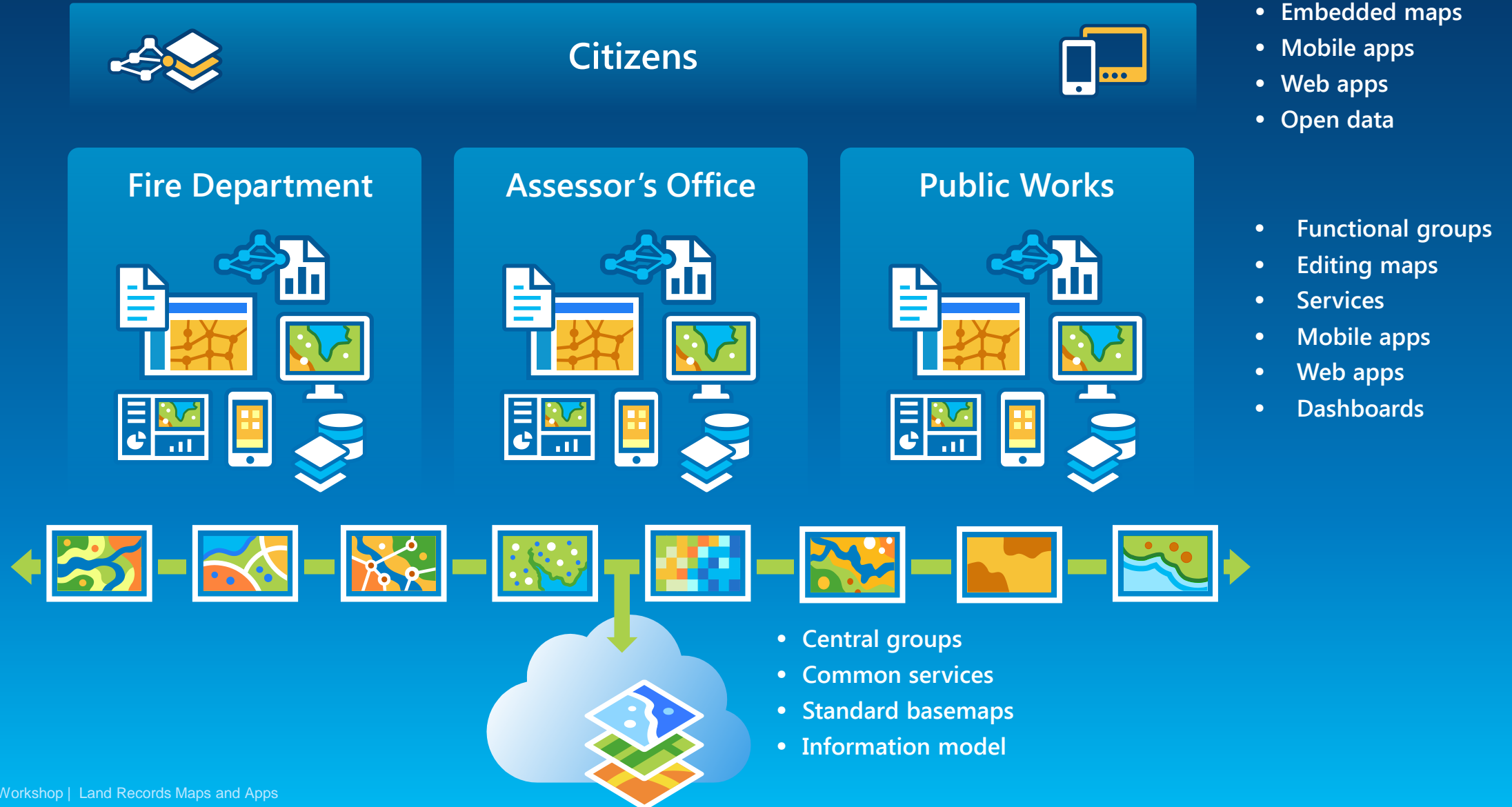
Show Me!

Land Records Maps and Apps



A System View

Deploying ArcGIS for Local Government



How do I get started?

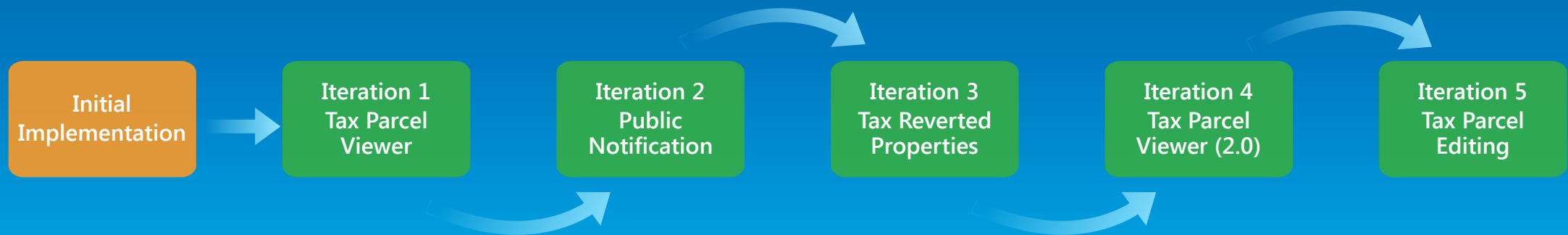
Leverage solution offerings to maximize technical expertise and minimize deployment time

1. Select a configuration pattern

- a) Complete system adoption
- b) Publish and adopt
- c) Sample code and customize

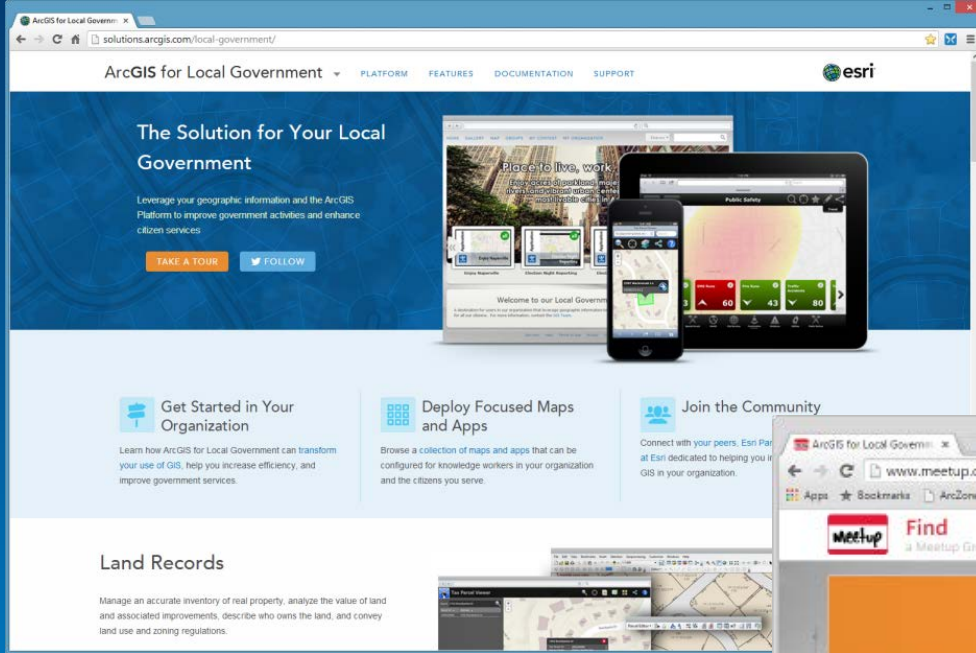
2. Deploy quick wins

- a) Align with key business requirements
- b) Select one or more focused maps and apps
- c) Configure your mapping platform
- d) Deploy the focused maps and apps
- e) Iterate....

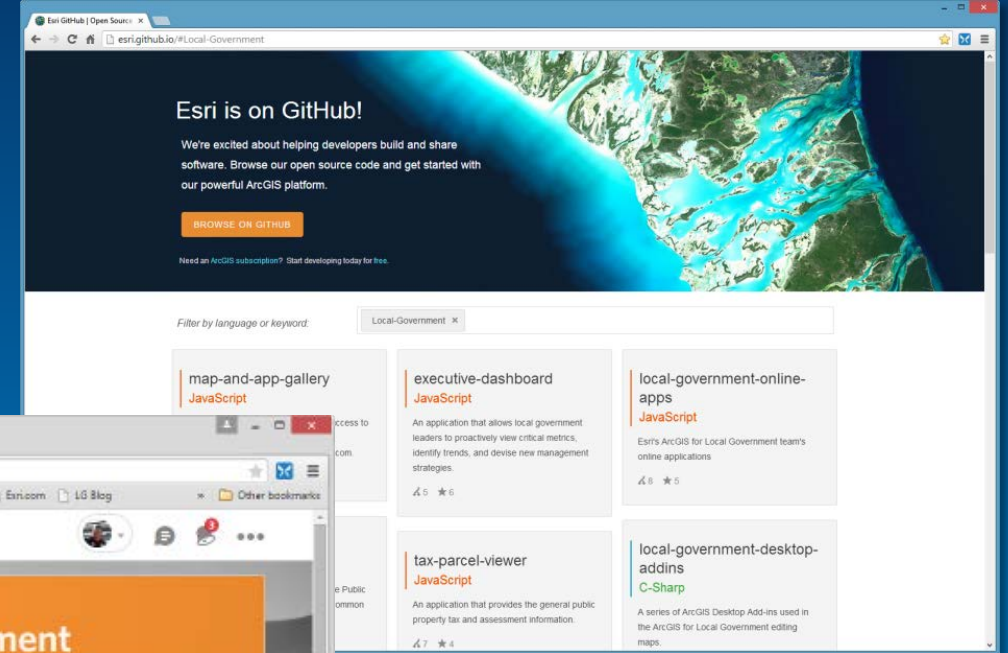


The Community

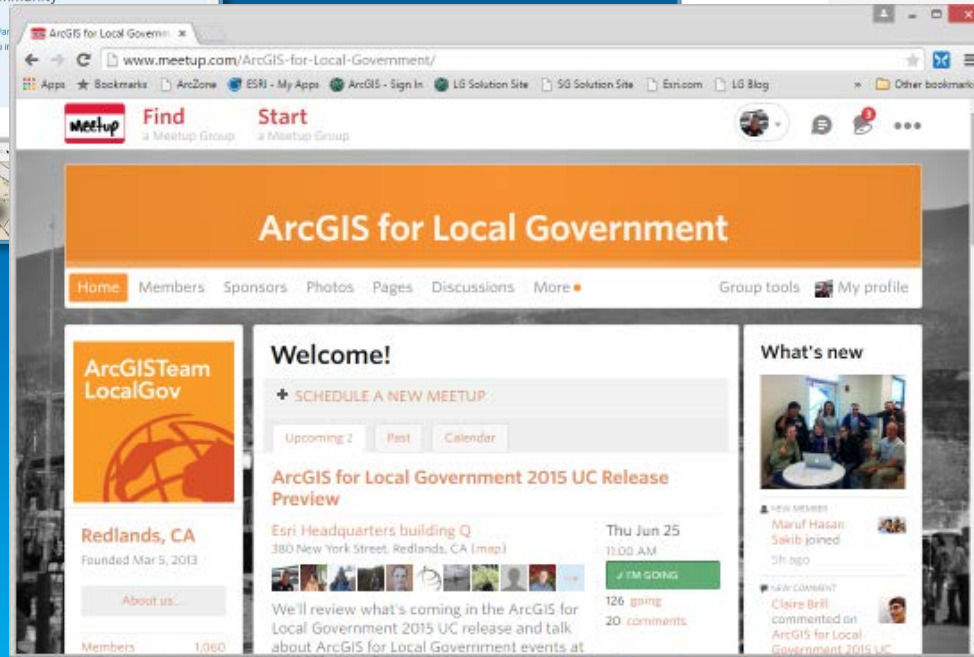
It's not just about the technology



Destination where government's can collaborate



Place where developers can contribute too



Ongoing dialog to share success stories and learn from others

What's Next

Continuously Evolving Solution Offering



It's a Process

Continuously Evolving Solution Offering

- Photo Survey (Aug 2015)
- Land Bank
- Real Estate / Comparable Viewer
- Next Generation Tax Parcel Viewer
- Appraisal / Assessment Maps
- Community Control

...as we expand community engagement and develop partner and professional service offerings

Closing

- Deliver a “land records GIS” that enables success
 - Easier to deploy and sustain
- Evolve and grow the collection of apps
- Develop a community of users
- Provide a platform for partners to deploy their solutions

UC Events

- **ArcGIS for Local Government Sessions**
 - Seven different tech workshops
 - Several focused demo theatres
- **Parcel Editing Solution Sessions**
 - Editing and Maintaining Parcels with ArcMap
 - Advanced Parcel Editing in ArcMap
- **Land Records Special Interest Group**
 - Thursday Lunch
- **Solution Island**
 - Focused conversations / support

Thank you...



<http://solutions.arcgis.com>



<http://meetup.com/ArcGIS-for-Local-Government/>
<http://meetup.com/ArcGIS-for-State-Government/>



@ArcGISLocalGov
@ArcGISStateGov

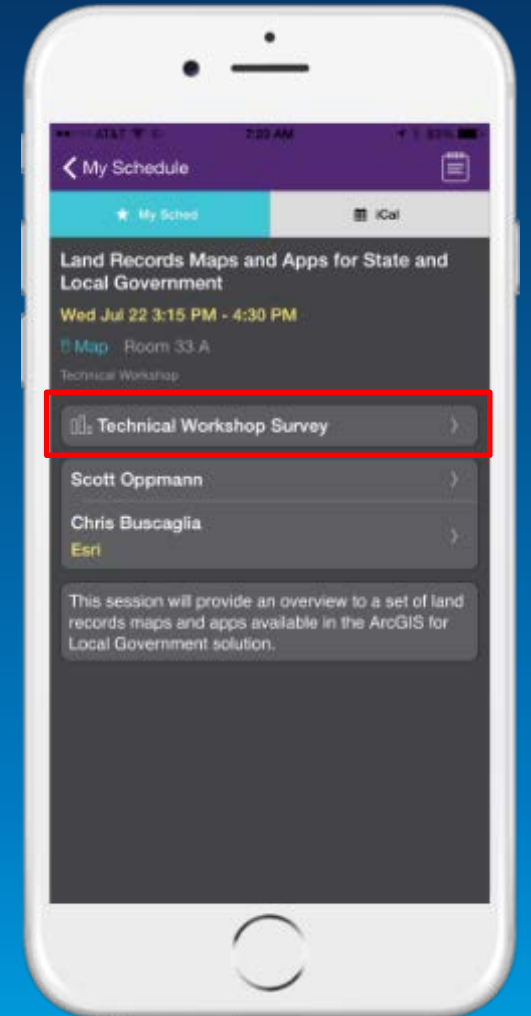


<http://esri.github.com>

Please fill out the session survey:

Mobile – Esri Events UC mobile app

Paper – Pick up and place in drop box





Understanding our world.