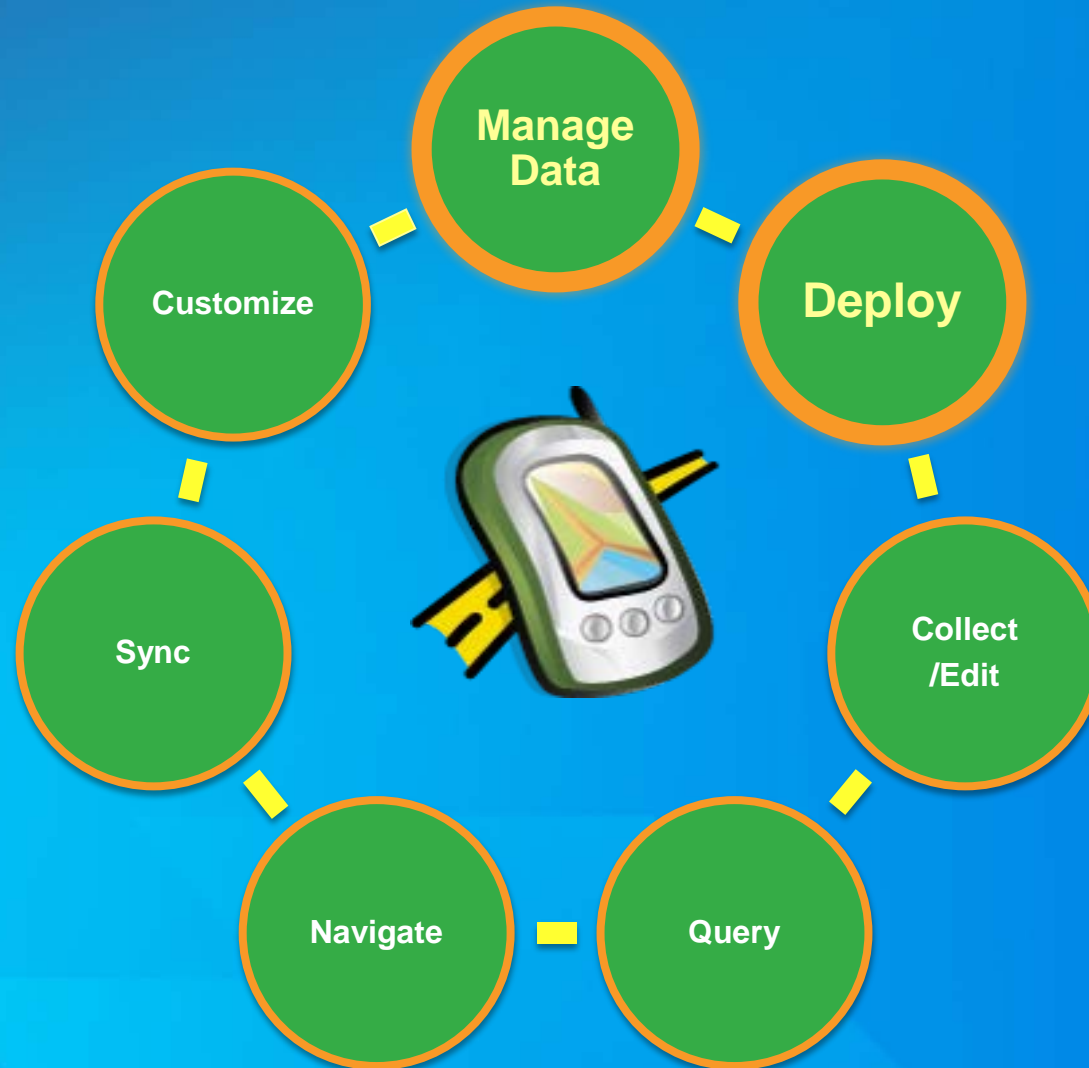




Preparing and Deploying Data to ArcPad

Juan Luera

What can you do with ArcPad?



Planning Field Projects - Device Considerations

- **Environment**
 - Light Conditions/Glare
 - Temperature
- **Screen Area**
 - Mobile Device
 - Tablet/Laptop
- **Screen Resolution**
- **Device OS**



Performance: Windows Mobile



- 11 MB to launch ArcPad
- 4 – 9 MB to load default ArcPad Modules
- 5 – 12 to load all ArcPad Modules

Planning Field Projects – Performance

Operational vs. Background



Editable



**Reference
(Read Only)**



Basemap

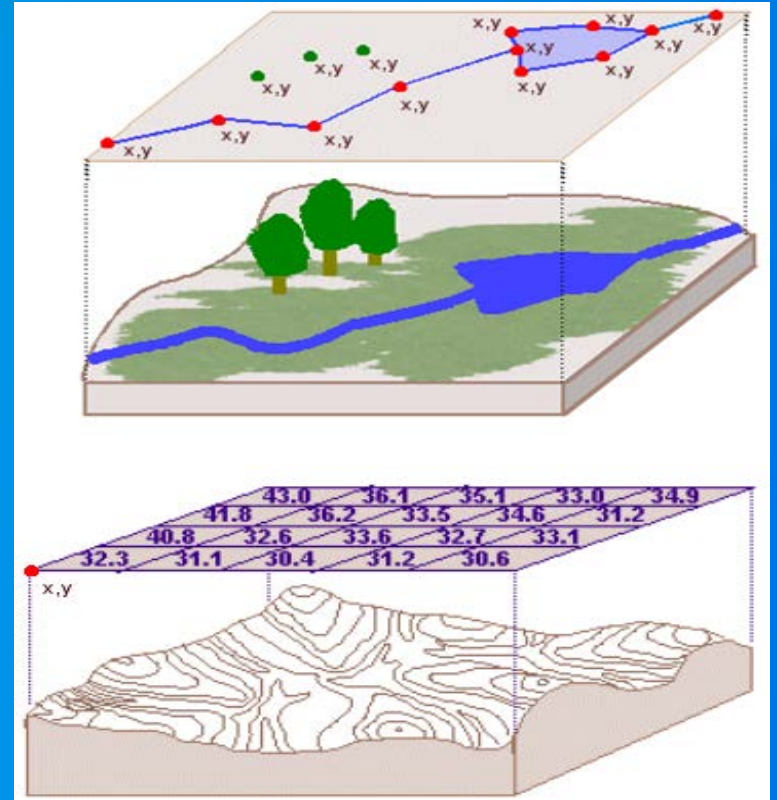
Supported Layer Types

- **Vector**

- SHP: Will never die!
- AXF: OTB Related Table Support
- NAVMAP: StreetMap data
- APG: ArcPad Graphics Layer
- APH: ArcPad Photo Layer

- **Raster**

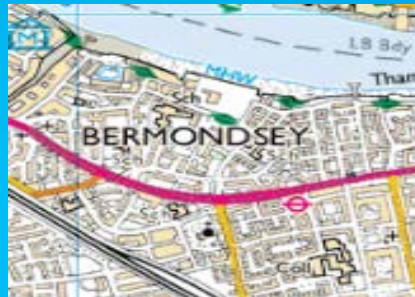
- TIFF – different types including GeoTIFF
- JPG
- SID
- PNG
- ArcGIS Online Basemap



Pros & Cons: Rasters

Pros

- Can display vast amount of features and complex labelling
- Choose single or multiple files
- Fast to draw
- Transparency
- Read Only



Cons

- Can not turn on or off parts of the image (all or nothing)
- Many file types supported, not all are as good as each other – choose carefully



- See ArcPad Help topic [Choosing the most appropriate raster format for your Project](#)
- Use sample ArcPy script [Create Local Map Tiles](#) to create raster tiles of your own data

Pros & Cons: Shapefiles as Background



Pros

- No (little) preparation needed, Copy and Go
- Draw fast in ArcPad when not editable
- Great for large read only layers eg: contours
- If made editable, could be used as an advanced graphics layer

(Note: can not check in)

Cons

- Many files
- Users can make editable (even when you don't want them too!)

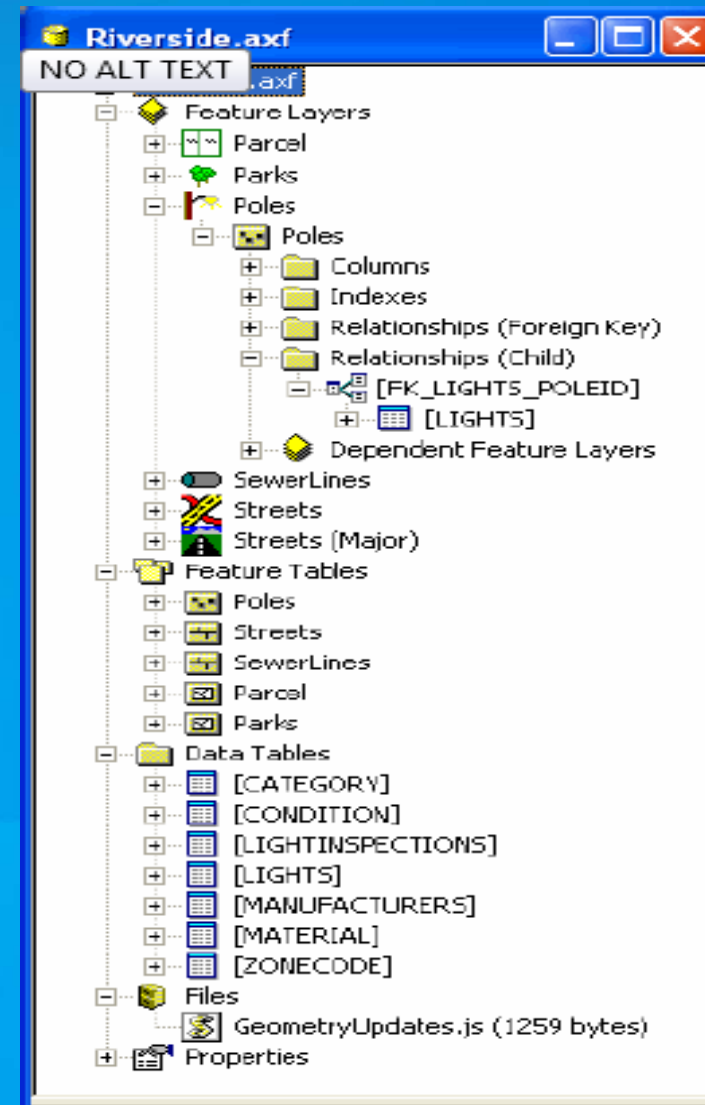
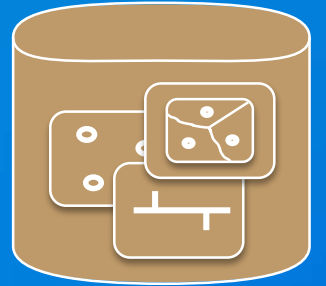
Pros & Cons: AXF as Background

Pros

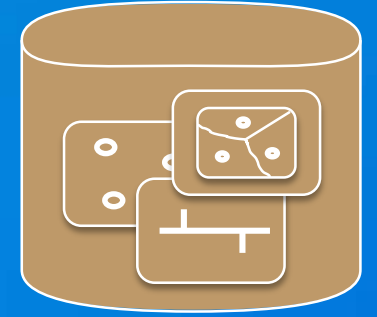
- Single file for many layers
- Can be made read only
- Can contain related records for viewing

Cons

- Can be slow when contain features with large number of fields or coded value domains
- Has storage limit – 4gb



Pros & Cons: AXF as Operational Data



Pros

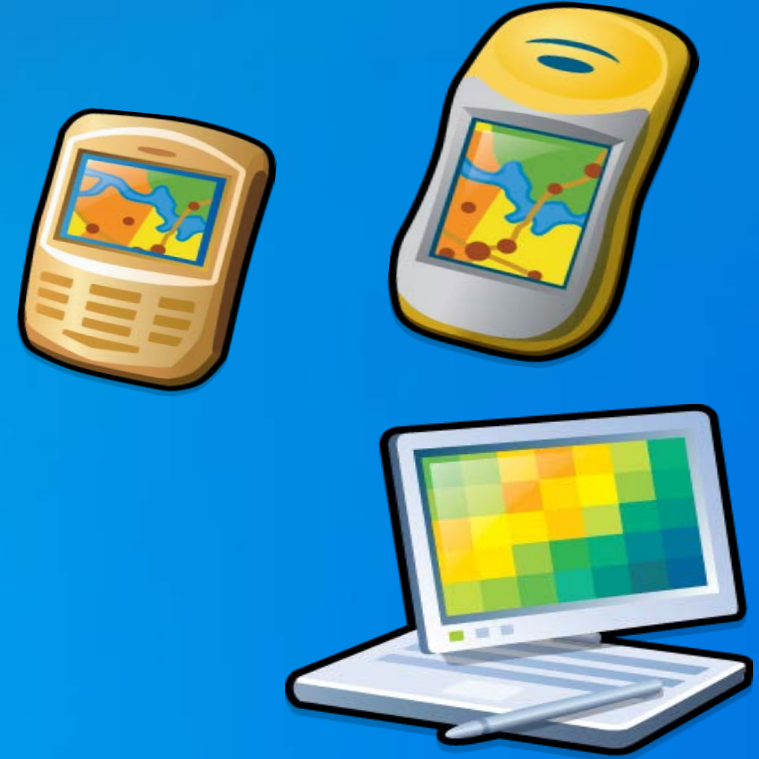
- **Single file**
- **No drop in drawing performance when editing features**
- **Features can have related records**
- **Out of the box server synchronization**

Cons

- **Can be slow when contains large number of feature layers**
- **Can be slow when contains features with large number of fields or coded value domains**
- **Have storage limit – 4 GB**

Reduce Project Data Size

- **ArcPad AXF**
 - Geographic Area
 - Number of Layers
 - Number of Domains
 - Raster vs Tiles vs Offline Basemaps
 - File Size Limit (4GB)



If you need to take a large amount of data into the field, then consider a tablet or laptop computer.

Remember, background layers should be manipulated as much as possible to help increase performance!

Validating Features with Get Data for ArcPad

- Subtypes
- Range Domains
- Coded Value Domains
- Related Tables
- Default Values

Get Data For ArcPad - Select Output Options

What data do you want?

Spatial extent: The current display extent

Only get selected features

Only get features specified in layer's definition query

Only get fields specified as visible in layer's properties

Specify a name for the folder that will be created to store the data:

ArcPad Project

Where do you want this folder to be stored?:

C:\ArcPad

Create an ArcPad map (.apm file) for the data Map name: Project.apm

Encrypt checked out data Password:

Validate feature classes before checking out

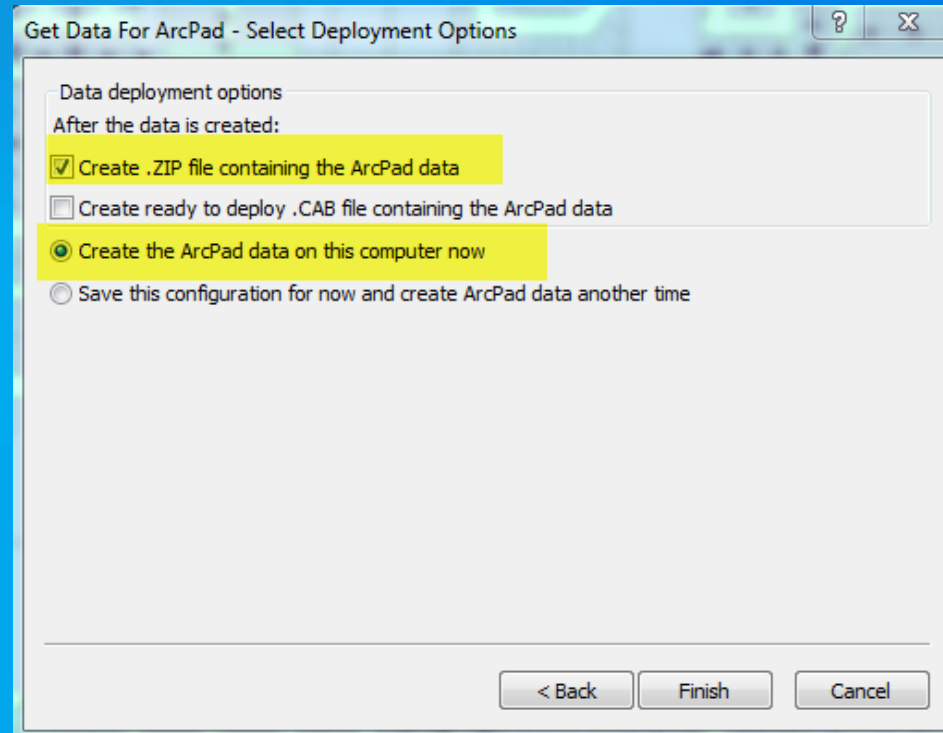
< Back Next > Cancel

- Maintain attribute integrity of your ArcPad project.

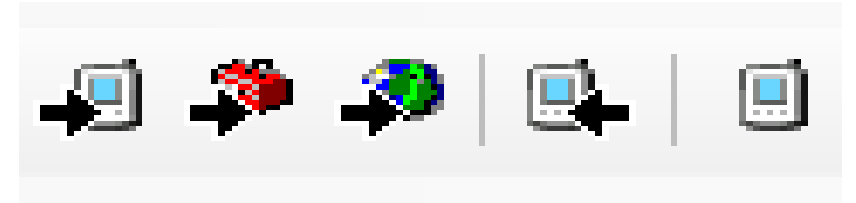
How to get data onto the device

- ArcPad Data Manager
 - ArcGIS for Desktop
 - ArcGIS Toolbox
- ArcPad Apps
- ArcGIS Online

- Custom
 - FTP – Download sample
 - Download Web Link

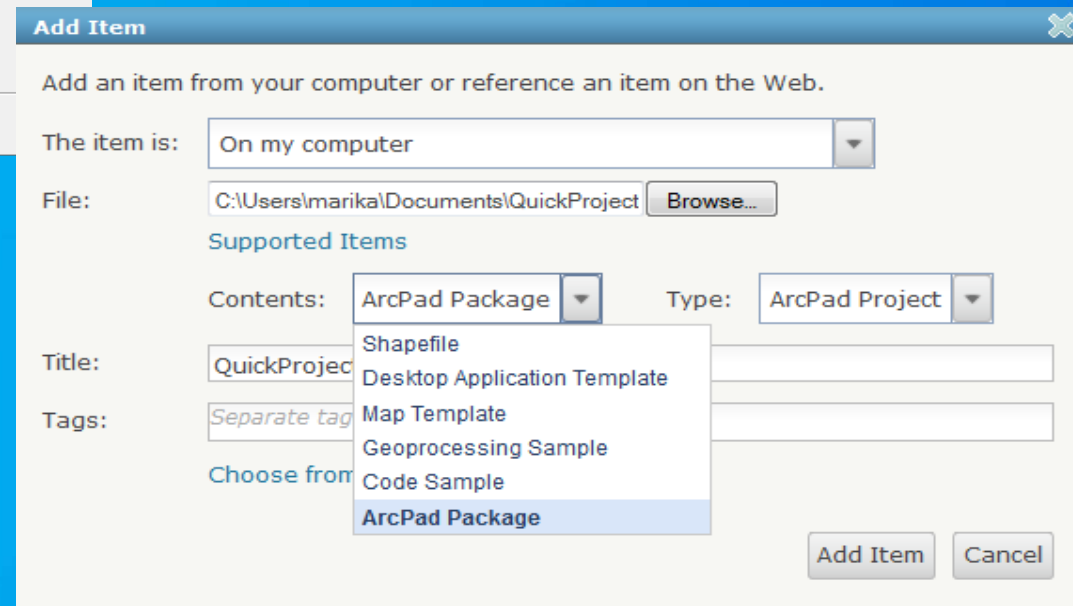


Get Data for ArcPad

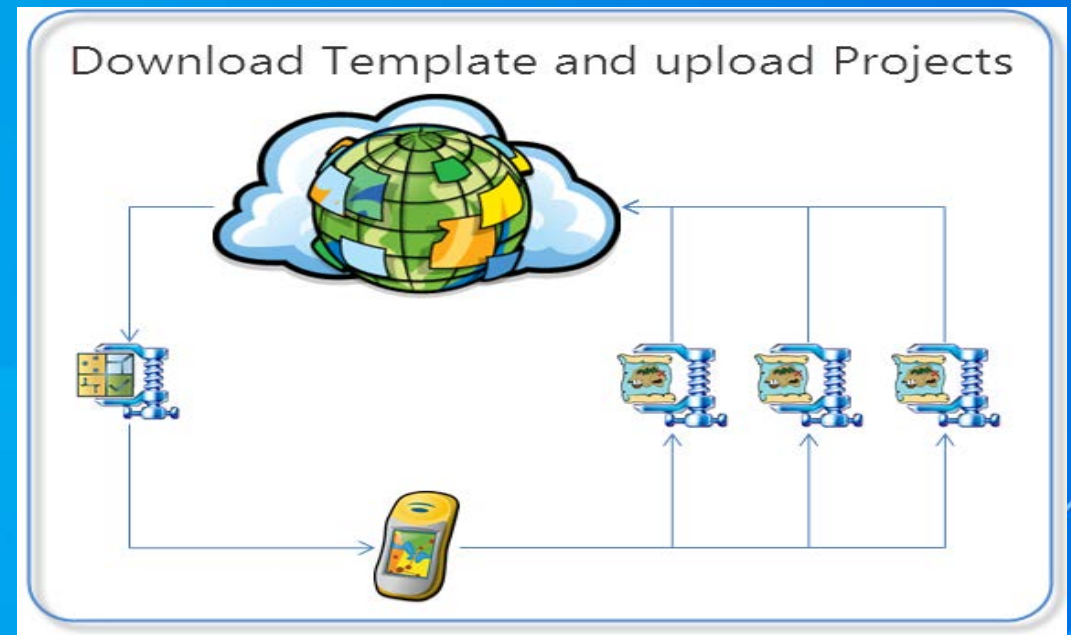
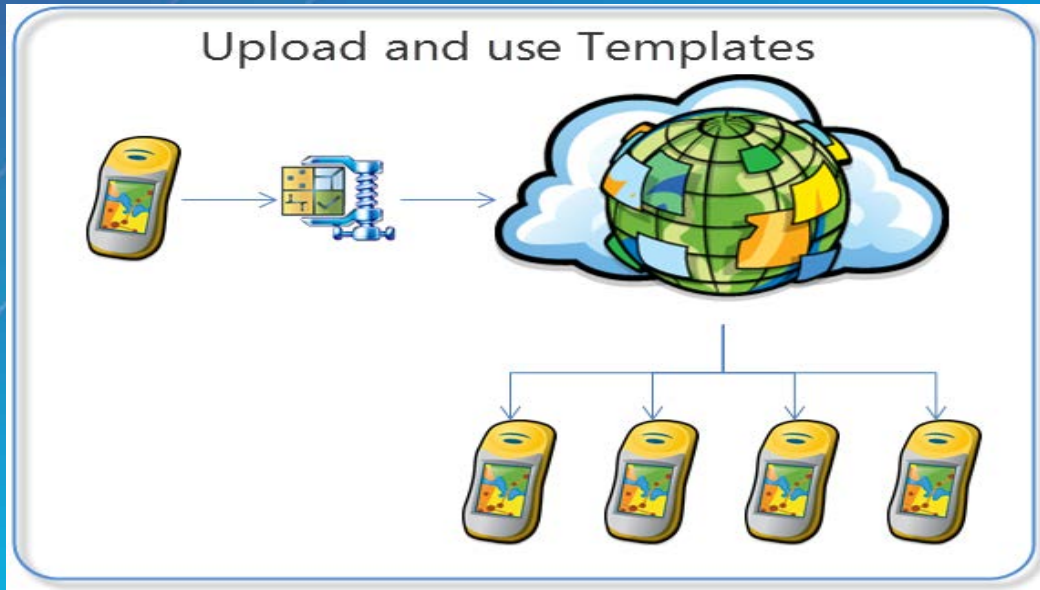


- ▶ Checkout Data
- ▶ Checkout Schema only
- ▶ Background data (SHP)
- ▶ Background editable data (AXF)
- ▶ Background data (AXF)
- ▶ Background editable data (SHP)

ArcPad Packages



ArcPad Project Templates



Using ArcGIS Online ArcPad Packages

- Projects
 - Zipped File
 - Map and Data
 - Instructions and Photos
- Templates
- Update existing Packages

ArcGIS FEATURES CREDITS PLANS 30-DAY FREE TRIAL DEVELOPERS Sign in esri

The Mapping Platform for Your Organization

Create interactive maps and apps and share them with the rest of your organization. Realize new opportunities and gain insight into your data. Do this quickly and easily with nothing to install or setup.

30-DAY FREE TRIAL

Reach Your Users
Share your maps and data through blogs, social media, or custom apps.

Go Mobile
Access your maps and information from anywhere, on any device.

Ready-to-use Content
Choose from many beautiful basemaps to kick-start your projects.

Add an item from your computer or reference an item on the Web.

The item is:

File:

Supported Items

Contents: Type:

Title:

Tags:

Choose from your tags

DEMO

Deploying ArcPad Online



ArcPad Packages

ArcPad Templates

The background features a vibrant blue gradient. On the left side, there are several overlapping geometric shapes: a large purple triangle pointing upwards, a yellow triangle pointing downwards, and a dark purple triangle pointing downwards. The yellow triangle contains a faint, light-colored map of a region, possibly a county or state boundary. The overall composition is modern and abstract.

Questions?

Thank you...

- Please fill out the session survey in your mobile app
- Select [enter session title here] in the Mobile App
 - Use the Search Feature to quickly find this title
- Click “Technical Workshop Survey”
- Answer a few short questions and enter any comments

