



Using ArcPad in the Field

Juan Luera

Agenda

- Collection Methods
- Field Editing

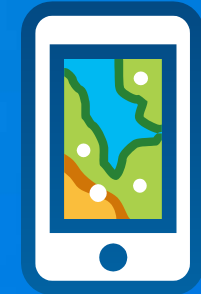
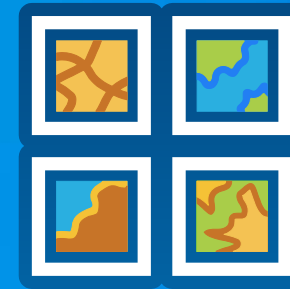


Collection Methods



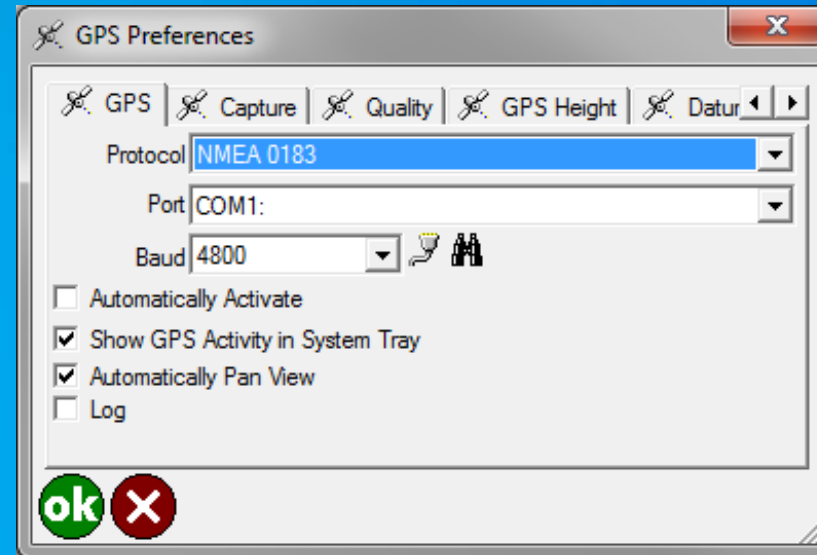
Collection Methods – Without GPS

- Data validation
 - relative position
 - Attribute information
- Reliant on background reference data
- Suited when
 - need low level control of data



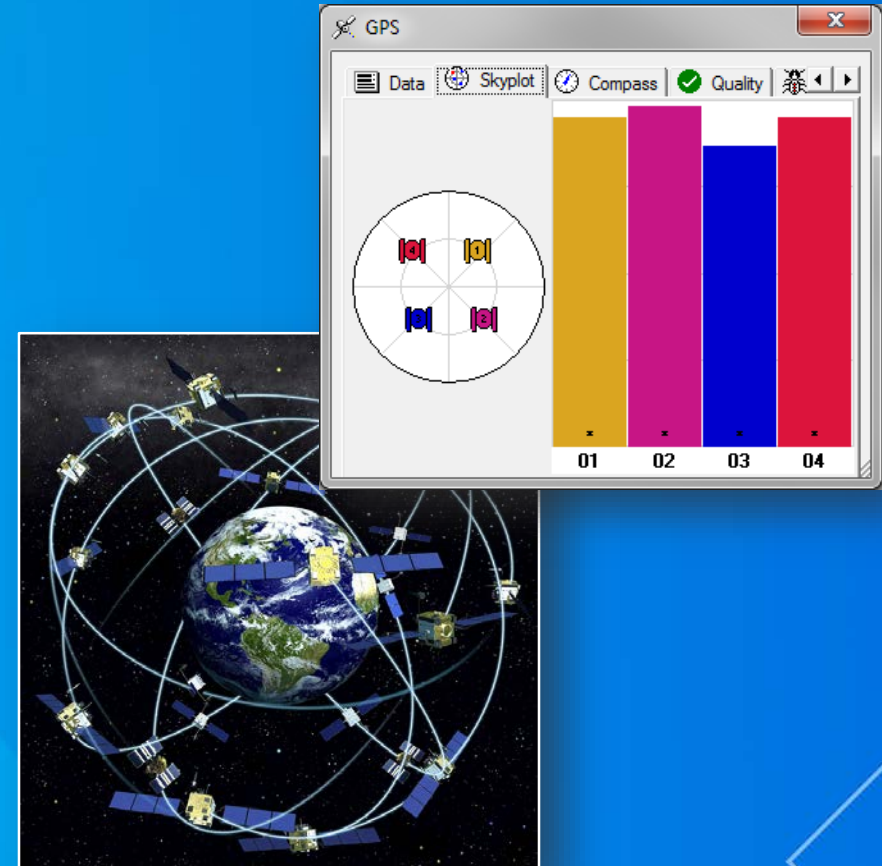
Collection Methods – With GPS

- GPS enabled device
- USB GPS
- Bluetooth GPS
- Windows Location
- Preferences in ArcPad
 - Protocol
 - Port
 - Baud rate
 - “Find GPS” tool



Collection Methods – GPS Fundamentals

- Three Segments of GPS
 - Space (Appox. 24 SV's Orbiting every 12 hrs)
 - Control (Earth Based Master and Sub-Control)
 - User (Growing Rapidly)
- GNSS (GPS, GLONASS, GALIELO)
- Sources of Error
 - Obstructions
 - Multipath
- Post processing or real time GPS



Collection Methods – Laser Rangefinder

- Ideal when:
 - Target inaccessible
 - Not possible to get GPS signal or GPS positional accuracy
- Create 1 and 2 point offsets
- Linear and radial traverses
- LaserGIS for ArcPad from Laser Technology, Inc.

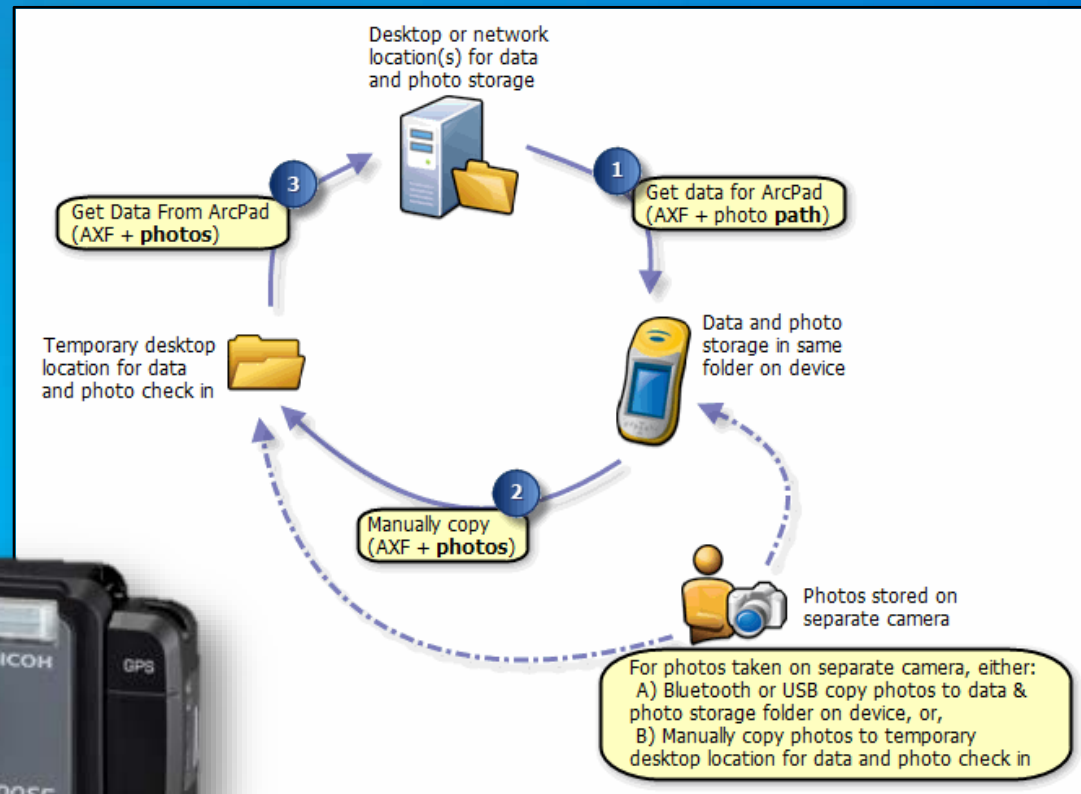
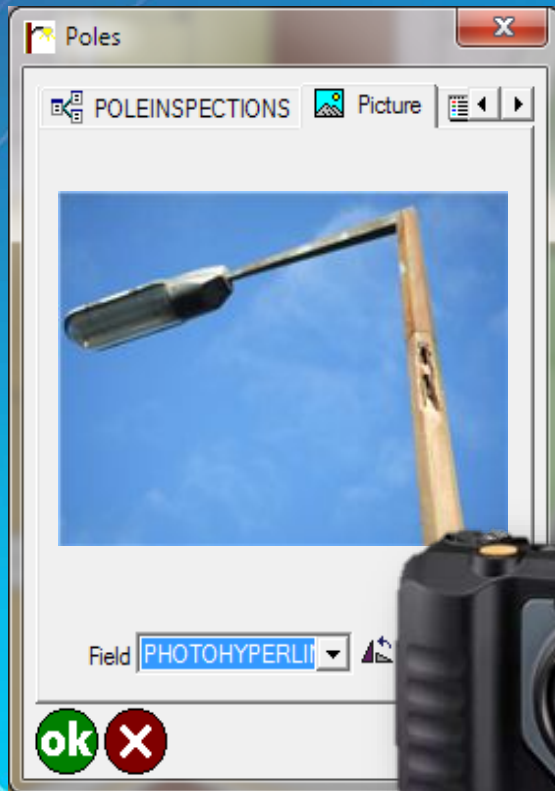


Point/Vertex

XYZ	Offset	2 Point Offset	Options
Reference Point A	6213964.53764669		
Offset is right of A	0	'T	
Horizontal Distanc	186.844	ft US	
Inclination	7	°	
Reference Point B	6214107.37882667		
Bearing	167.7	'T	
Horizontal Distanc	206.897	ft US	
Inclination	7	°	
M			

ok x

Collection Methods – Cameras

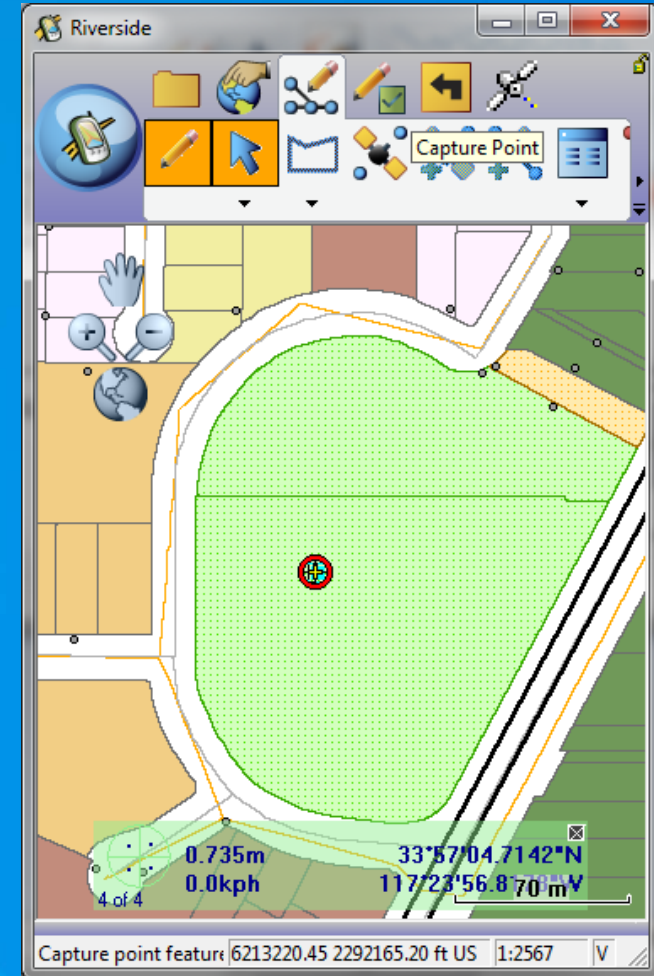


Field Editing



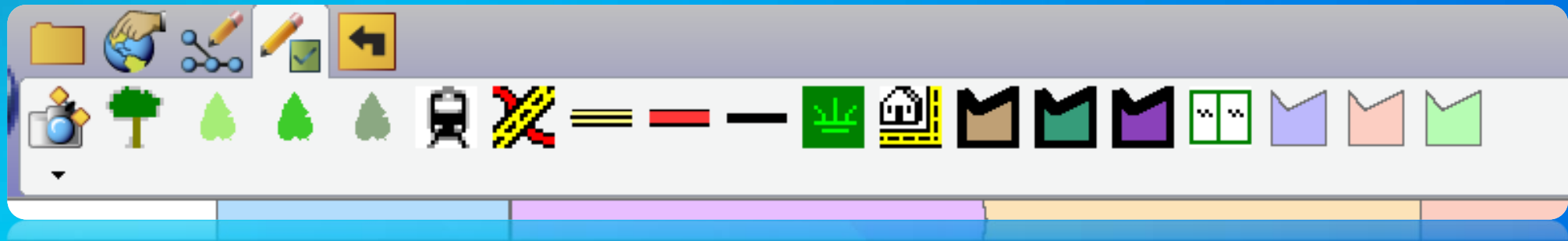
Field Editing – GPS feature collection

- Capture point /vertex
- Stream GPS vertices
- Move point to GPS position
- Collect GPS TrackLog
- Log output from GPS Receiver



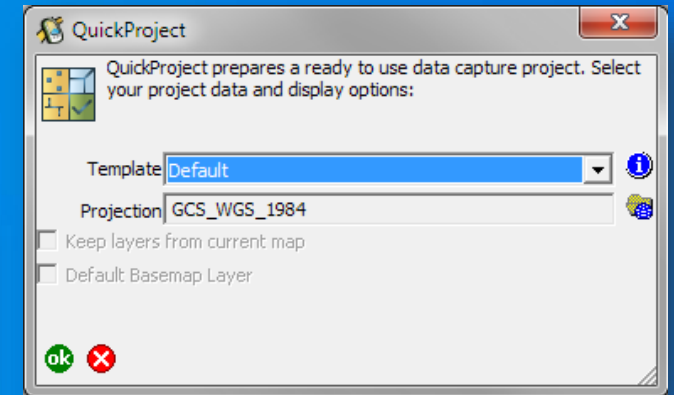
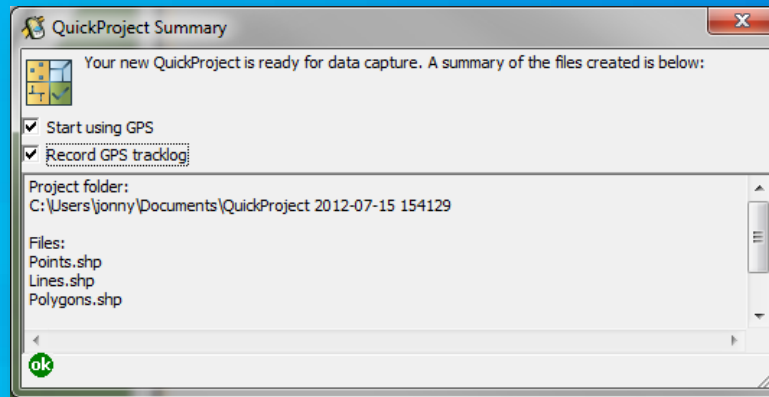
Field Editing – Use the Quick Capture tool

- Dynamically generated based on editable layers
- Create new features with one click
- Aware of related tables



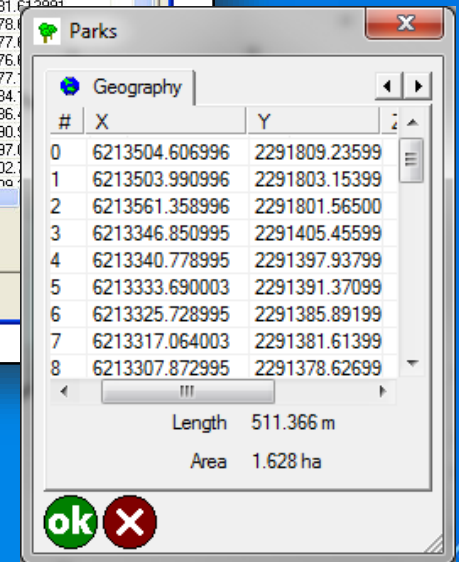
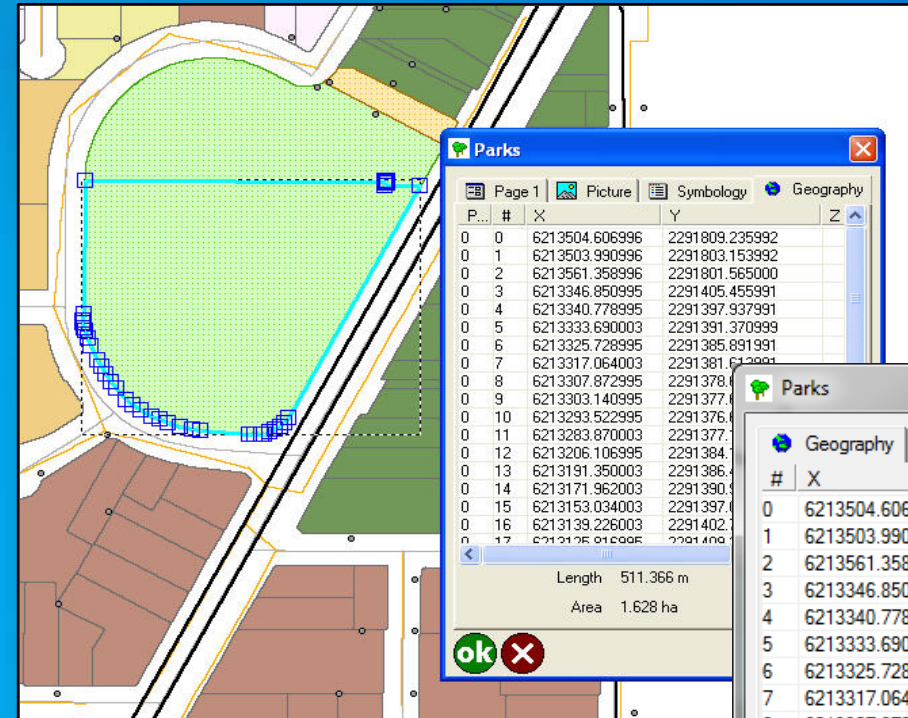
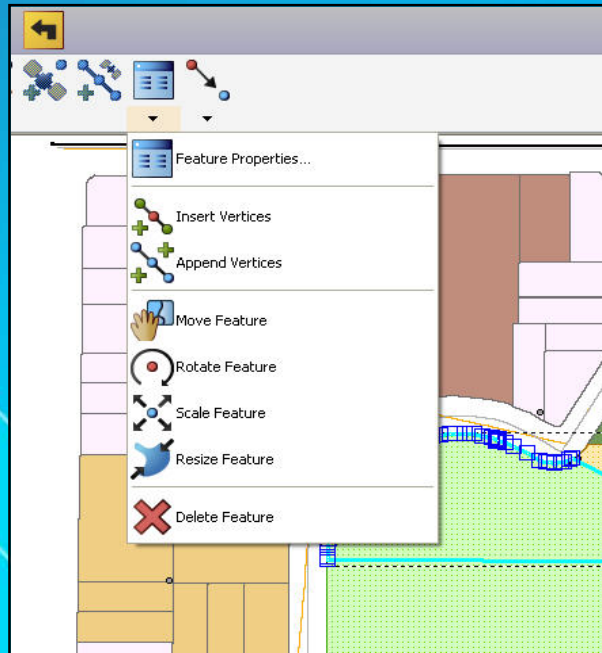
Field Editing – Quick Projects

- QuickProjects
 - Creates ready-to-use data capture project
 - Simple, efficient method for capturing data into new layers
- Templates
 - Default template
 - Points.shp
 - Lines.shp
 - Polygons.shp
 - Custom template



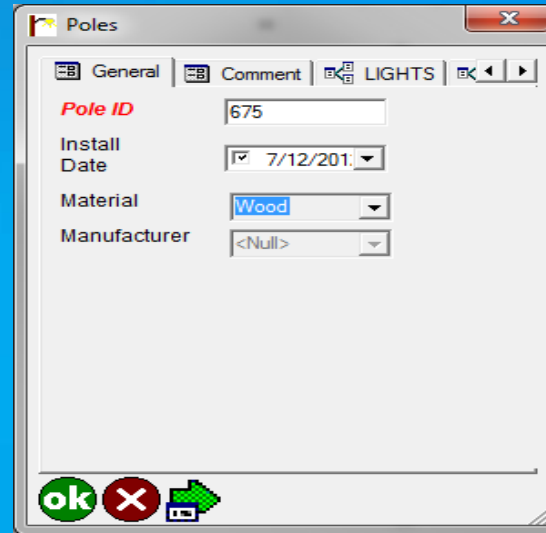
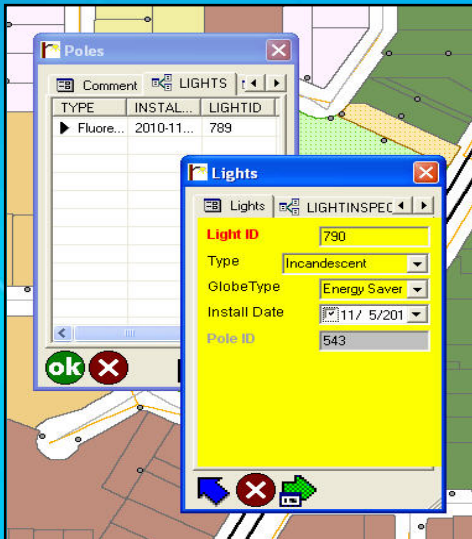
Field Editing – Geometry Edits

- Extend a line
- Add or delete vertices
- Move a vertex



Field Editing – Updating Attributes

- Attribute tables
- Related tables



Field Editing - Demo



Resources

Make your suggestions known

<http://ideas.arcgis.com/>

Resources

<http://resources.arcgis.com/en/communities/arcpad/>

Team blog

<http://arcpadteam.blogspot.com/>

Twitter

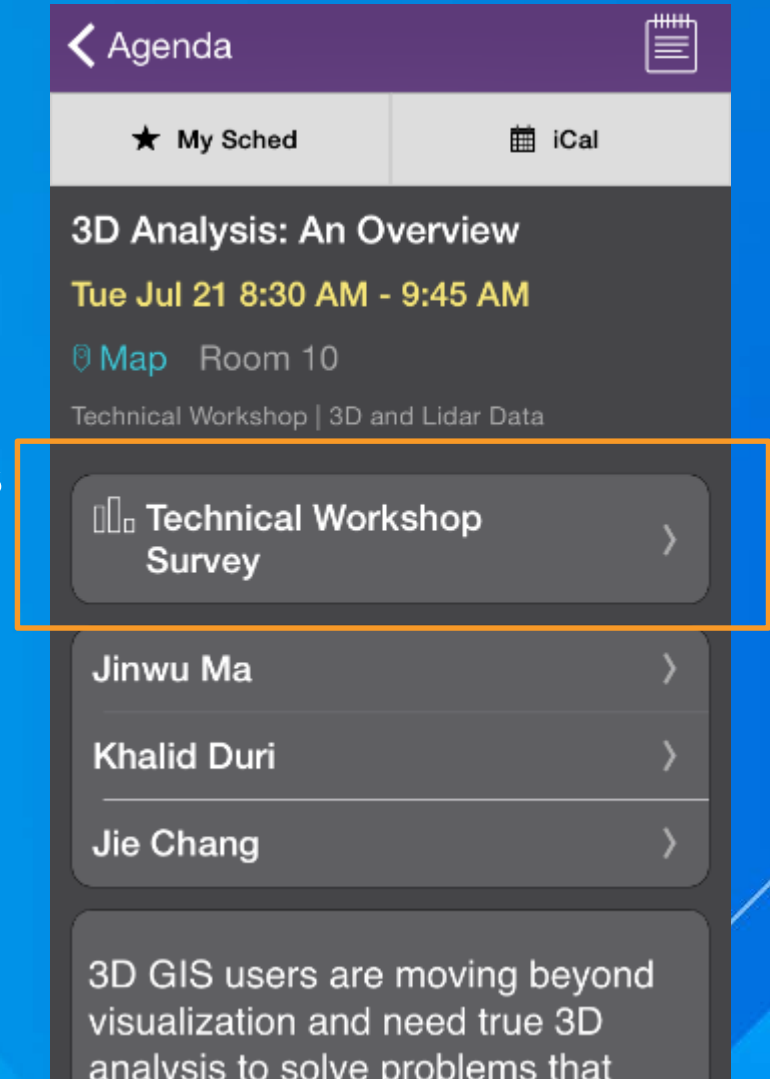
<http://twitter.com/ArcPadTeam>



Questions?

Thank you...

- Please fill out the session survey in your mobile app
- Select [enter session title here] in the Mobile App
 - Use the Search Feature to quickly find this title
- Click “Technical Workshop Survey”
- Answer a few short questions and enter any comments





Understanding our world.