



# Best Practices: Authoring Maps for Field Use

Morgen Zhang

Rui Ge

# What am I using:

- ArcGIS Online Organization account
- **ArcGIS Server Token Secured Feature Service**
- **Hosted feature services**
- ArcGIS.com web maps
- ArcGIS.com groups
- Collector for ArcGIS

Feature Class Properties

Field Name	Data Type
NAME	Text
ADDRESS	Text
DATEOCCUR	Date
PROPTYPE	Text
CITATYPE	Text
FINE	Text
VIOLREASON	Text
ADDCOMMENT	Text
NOTIFIED	Text
GlobalID	Global ID
Shape	Geometry
OBJECTID	Object ID

Click any field to see its properties.

Field Properties	Customer Notified
Alias	
Allow NULL values	Yes
Default Value	
Domain	YesNo
Length	50

Service Editor

Connection: arcgis on arcgis-3552wmsql-1650137166.us-east-1.elb.amazonaws.com (admin) Service Name: AGS\_SDWaterViolation

General  
Parameters  
Capabilities  
Mapping  
**Feature Access**  
Pooling  
Processes  
Caching  
Item Description

**Feature Access**

REST URL: [5.us-east-1.elb.amazonaws.com/arcgis/rest/services/AGS\\_SDWaterViolation/FeatureServer](https://5.us-east-1.elb.amazonaws.com/arcgis/rest/services/AGS_SDWaterViolation/FeatureServer)

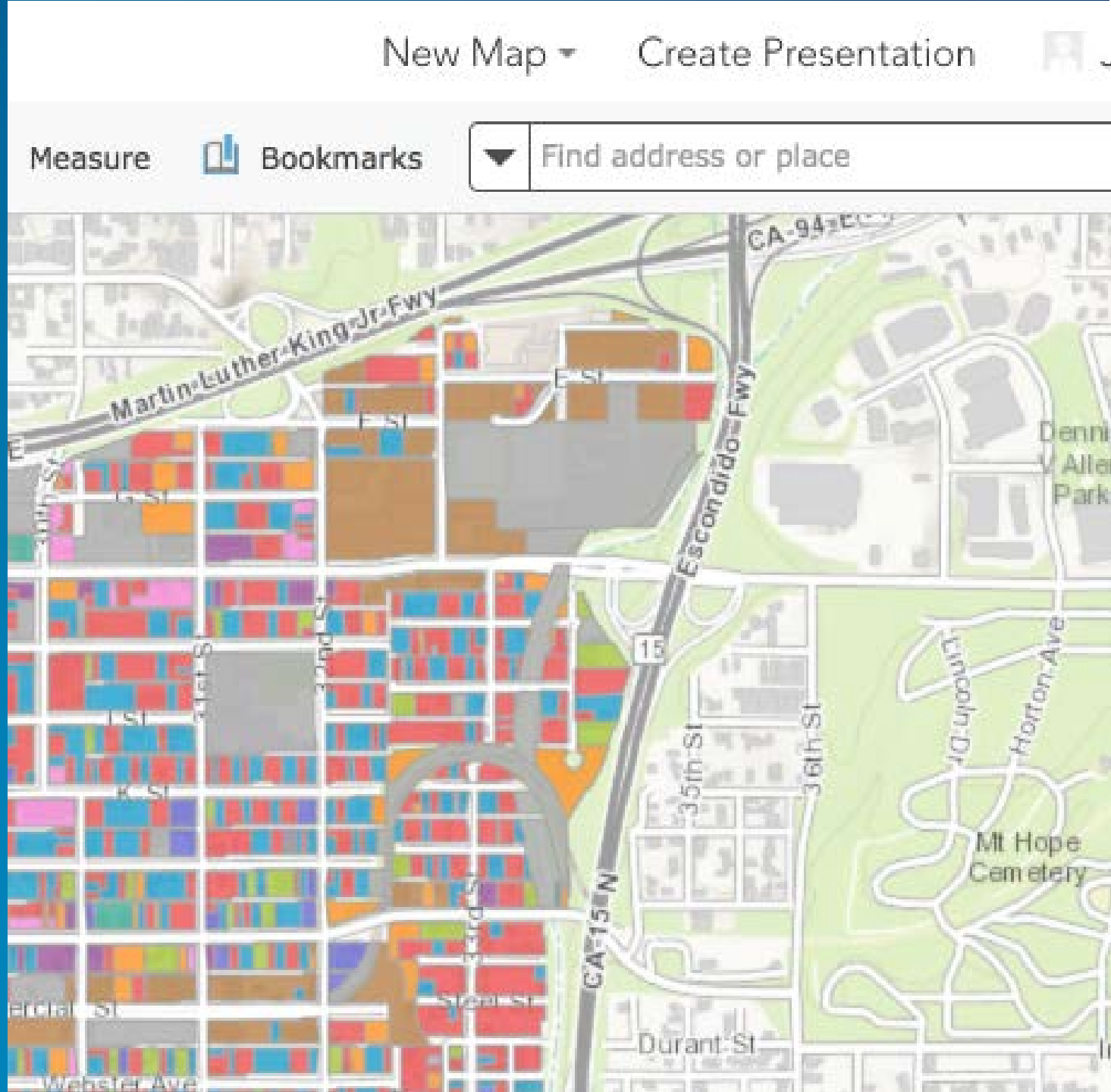
SOAP URL: [1st-1.elb.amazonaws.com/arcgis/services/AGS\\_SDWaterViolation/MapServer/FeatureServer](https://1st-1.elb.amazonaws.com/arcgis/services/AGS_SDWaterViolation/MapServer/FeatureServer)

Operations allowed:  
 Create  Delete  Query  Sync  Update

Properties  
 Allow geometry updates  
 Allow update of true curves

# Demo

- San Diego Water Violation map



## What are some best practices?

1. **Leveraging your servers security and using a proxy**
2. **Ability to use multiple data sources**
3. **Naming your basemap**
4. **Configuring your app tools and settings**
5. **Sharing your maps and services**

## More best practice to share

- **Map for disconnected editing**

- All feature layers are sync-enabled (ArcGIS Online hosted or on-premise Server)
- Server Tiled Map Services with export tiles enabled
- Esri default Basemap
- ArcGIS Online hosted tile layer

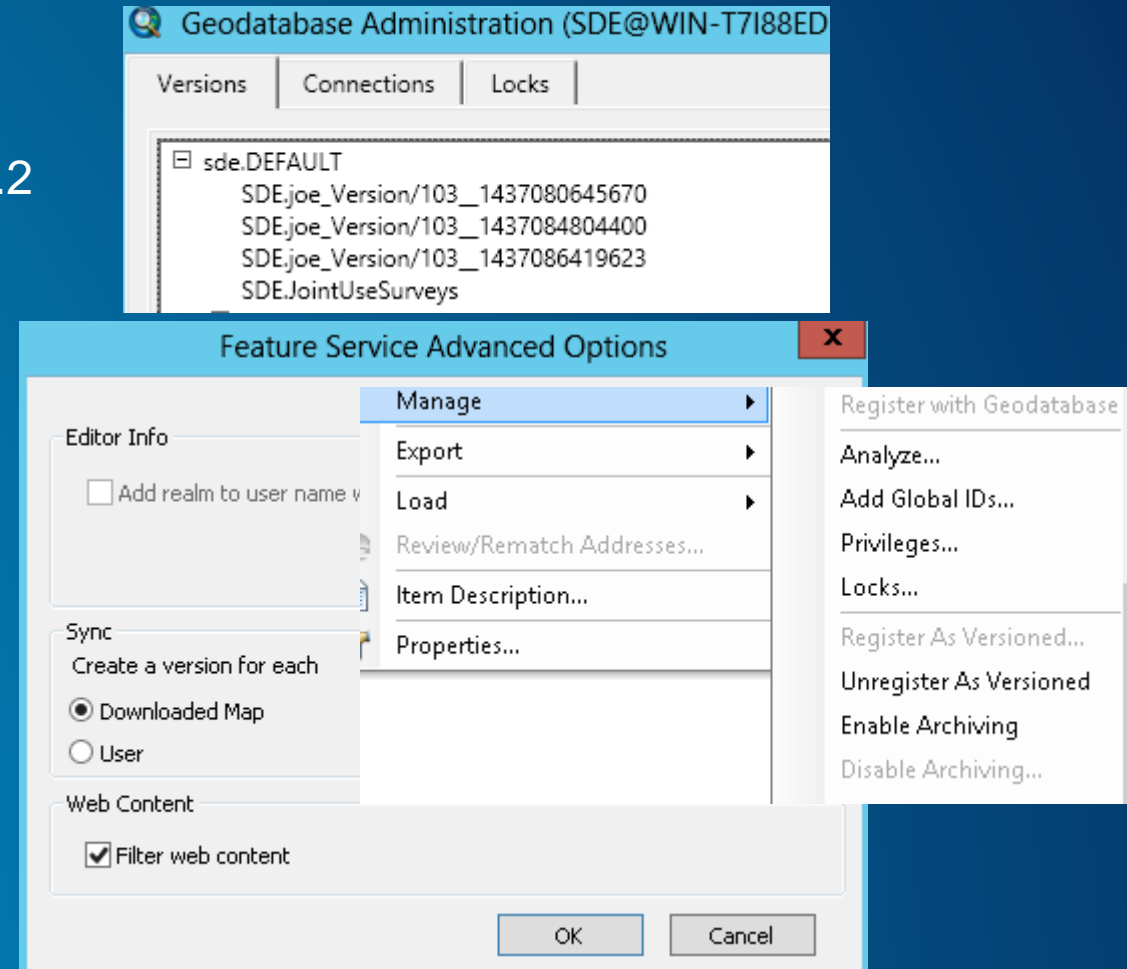
# More best practice to share

- **Versioned data**

- Viewing versioned data supported with ArcGIS 10.2.2 for Server
- Edit versioned data offline requires ArcGIS 10.3 for Server and ArcSDE 10.3

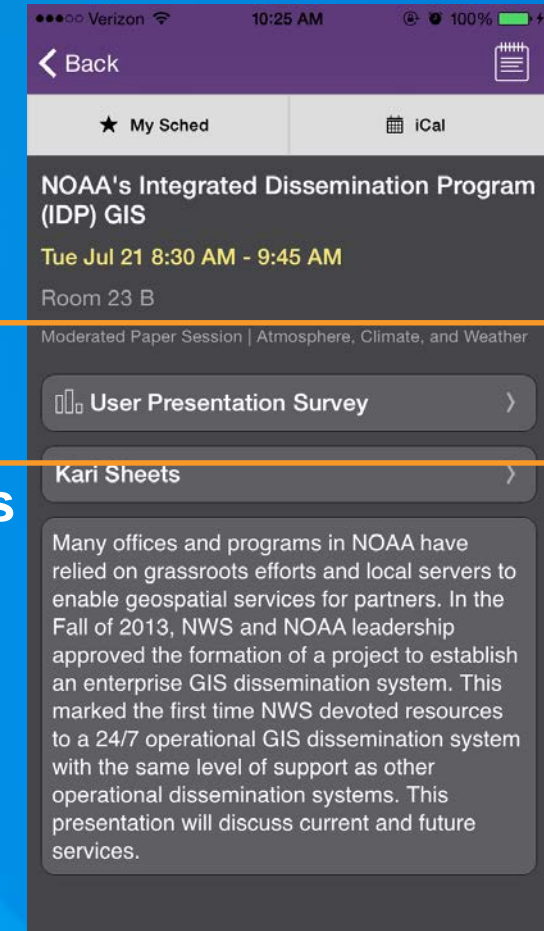
- Help tutorial:

<http://server.arcgis.com/en/server/latest/get-started/windows/tutorial-create-offline-maps-with-versioned-data.htm>



# Thank you...

- Please fill out the session survey in your mobile app
- Select in the Mobile App
  - Use the Search Feature to quickly find this title Best Practices: Authoring Maps for Field Use
- Click “Demo Theater Survey”
- Answer a few short questions and enter any comments





Understanding our world.