



ArcGIS for State Government: An Overview

Christian Carlson
Nikki Golding

Agenda

- Introduction
- The drivers behind this initiative
- What is ArcGIS for State Government
- What's Next?
- Your Feedback



Extending the platform with Solutions

Ready to use workflows and apps that make implementation easier and sustainable.



ArcGIS for State Government



solutions.arcgis.com/state-government

Common Goals



healthy communities

quality education

robust public services

diverse cultural opportunities

safe communities

sustainable environment

smart growth

thriving economy



Common Challenges

- Budget
- Doing More with Less
- Technical Breadth
- Domain Expertise
- Support for Existing Systems



A common experience....

2004

Florida EOC GIS Data, Functions and Business Process Related to 2004 Hurricane Season

The majority of GIS activity ESRI was involved in followed a "process of request - at all cost" workflow. This is typical during disaster or unplanned event. Over time the EOC GIS staff and participating volunteers were able to identify the most frequently requested services and maps requested by the Emergency Command Function teams (ECFTs). Requested map products were derivatives of a steady stream of information collected from each of the 15 ECFTs. The data sets were managed using the following workflow:

1. Statistics-Metrics by County:
 - a) Shelter occupancy counts
 - 3 out of 10 shelters open with 126 occupants
 - b) Energy Status
 - By percent, illustrative maps created to depict reasonable, newly recovered, and majority not-recovered
 - c) School district drawings
 - d) Special needs - various requirements
 - e) Disaster designations by county
 - f) Number of homes damaged
 - g) Number of businesses damaged
 - h) Other
2. Dynamic point location information:
 - a) Mobile shelter locations
 - b) Water and gas distribution and availability
 - c) National Guard Resources
 - Gas stations
 - Damage assessment
 - d) Qualification statistics
3. Static point location information

State EOC GIS during Hurricane Frances

5th, 2004 from Christian who got a call from Chris

Chris Manager of the State of Florida EOC GIS. Chris Manager, who had worked at Esri for 10 years, told us that he was unable to respond to the needs of the

users in "process of request - at all cost" workflow. Several reports and maps were made by the one ECFT's teams. Most of the requests were information from each of the 15 ECFTs. The case

was (e.g. 5 out of 10 shelters open with 126 occupants) and still majority of county address

requirements by county

- Power outages
- Home kitchens
- Water & gas
- National Guard Resources
- Gas stations
- Damage assessment
- Conference locations
- Power outages that come change
 1. Water tank meters
 2. Shelters & their status
- Other data
- Additional remarks

2005

State EOC GIS during Hurricane Frances

5th, 2004 from Christian who got a call from Chris

Chris Manager of the State of Florida EOC GIS. Chris Manager, who had worked at Esri for 10 years, told us that he was unable to respond to the needs of the

users in "process of request - at all cost" workflow. Several reports and maps were made by the one ECFT's teams. Most of the requests were information from each of the 15 ECFTs. The case

was (e.g. 5 out of 10 shelters open with 126 occupants) and still majority of county address

requirements by county

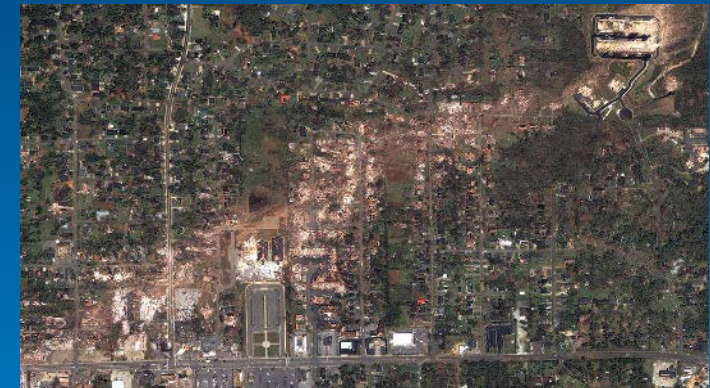
requirements by county

requirements by county

Hurricane Sandy



Southeast Tornadoes



Colorado Floods



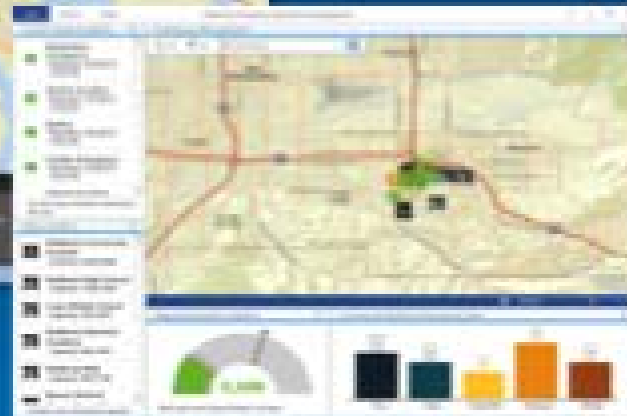
- Standard Set of Base Maps
- Hard Copy Map Production
- Mobile Damage Assessment
- Common Operational Picture
- Public Access/Communication Apps



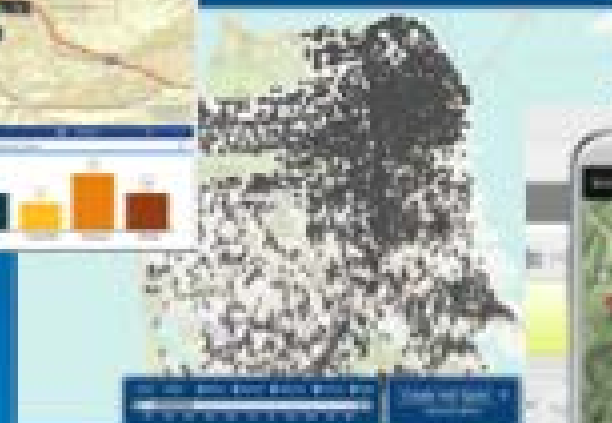
Display



Find



Compare



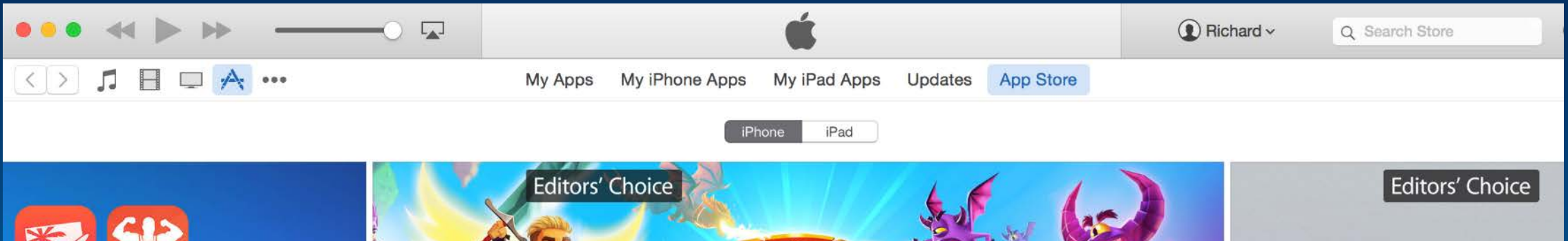
Analyze/Pattern
Recognition



Collect

A common experience....





100 billion apps have been downloaded from the App Store

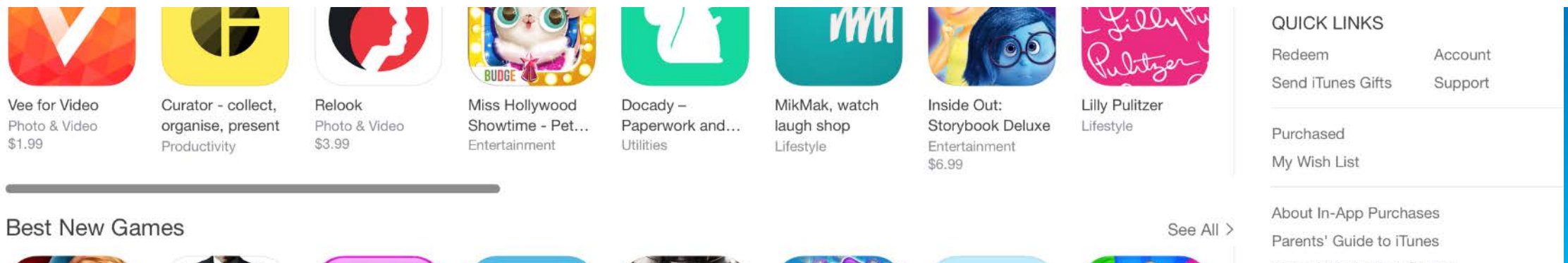
\$30 billion have been paid out to developers so far

850 apps are downloaded every second

The average person has 119 apps

1.5 million apps are now available on the App Store

195,000 educational apps are available on the App Store to customers



Realtor.com, Truila, Zillow....





Our Mission

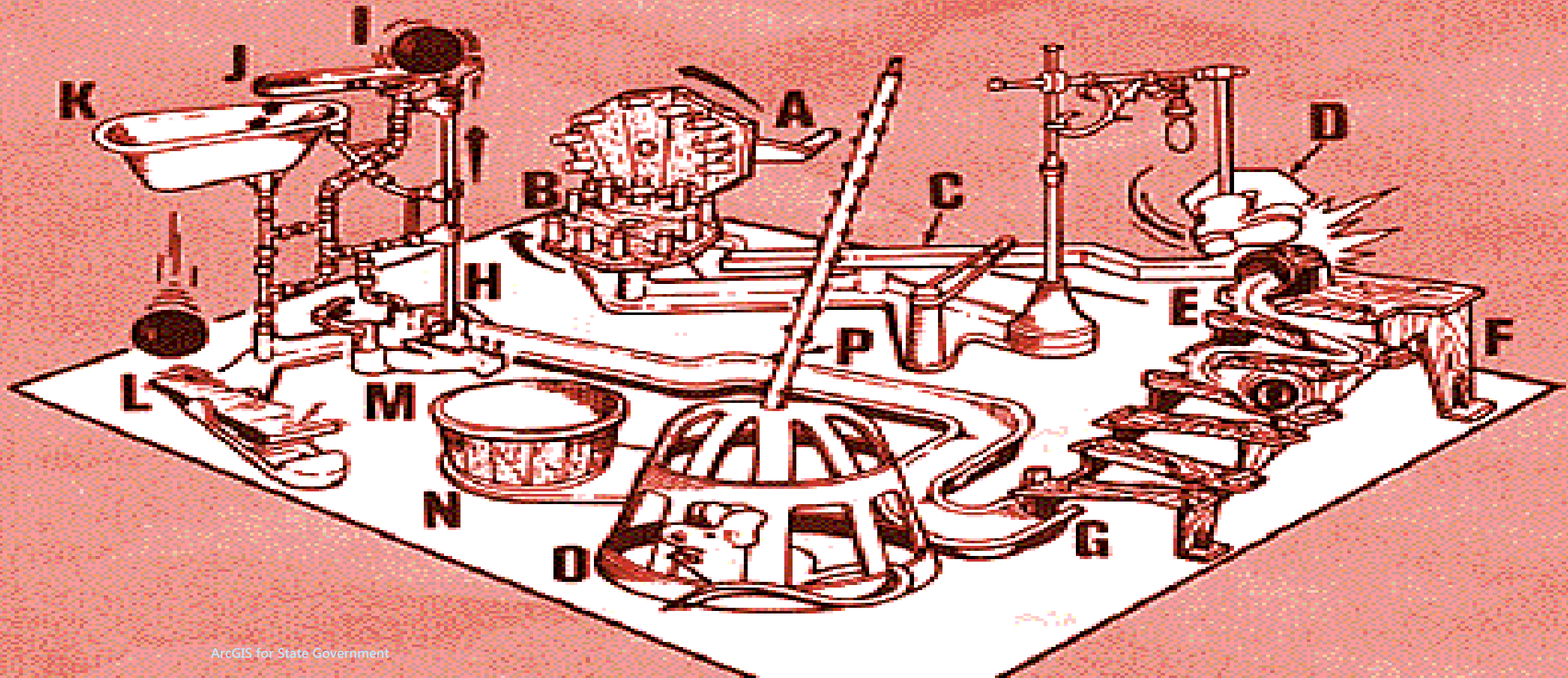
To help State Governments
implement a sustainable GIS.....

Best Practices for Implementation

- Establish a Location Platform for your organization
 - Maintain accurate and up to date information
 - Make your data accessible
 - Integrate with key business systems
- Leverage the common patterns of GIS Implementation
 - Location Enablement
 - Data Management
 - Analysis
 - Operational Awareness
 - Constituent Engagement
 - Field Mobility
- Maximize your investment by delivering solutions that serve your organizations priorities

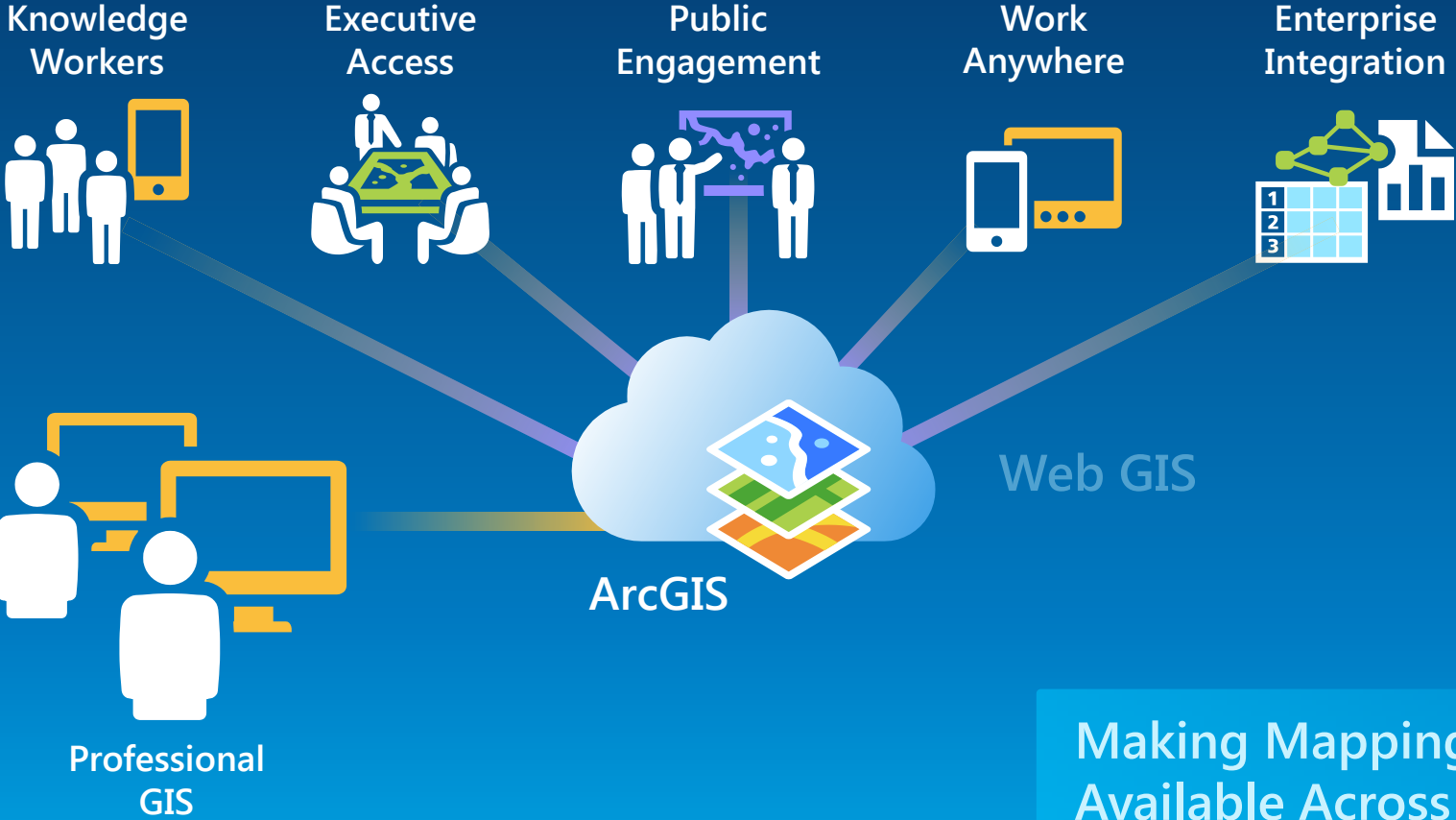
Configure First and Customize Only When Necessary

HOW THE MOUSE TRAP WORKS



ArcGIS as a Platform

Simple, Open, and Configurable



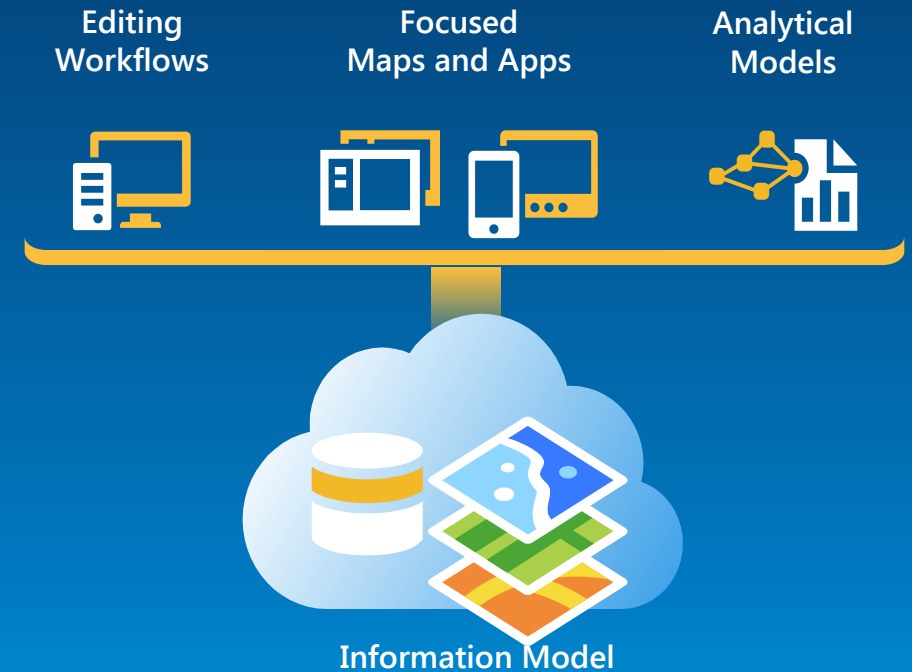
Making Mapping and GIS Available Across Your Organization

Transforming the Role of GIS

ArcGIS for State Government

Esri solutions for State Government customers

- Series of useful maps and apps focused on local government work
 - Configurable and extensible
 - Freely available and fully supported
- Community of users
 - Best Practices / Implementation Support
- Network of Esri Services and Partner offerings
 - Help users implement, sustain and enhance



.....Available on-premise or in the cloud

Transportation



- Railroad Crossing Inspection
- Road Closures
- Bridge Inventory
- Environmental Impact
- Crash Analysis
- Guardrail Inventory
- Pavement Marking Inventory
- Sign Inventory
- Signal Inventory

Public Health



- Beach Monitoring
- Water Quality Monitoring
- Restaurant Inspection
- Restaurant Inspection Results
- My Health Services
- Birth Outcomes
- Model Organization

Emergency Management



- Flood Planning
- Special Event Planning
- Emergency Assistance
- Evacuation Zones
- Road Closures
- Damage Assessment *
- My Hazard Information
- EM Maps
- Model Organization
- Public Information Map
- Local Impact Map
- Road Closures
- CAMEO Tools
- Incident Briefing
- Health and Safety Reports
- Damage Assessment Dashboard
- Floodplain Inquiry
- Emergency Assistance
- Evacuation Zone

Environment and Fish and Wildlife



- Permit Status *
- Permit Inspection
- Hunting License Locator
- Water Access Locator
- Wildlife Management Area Locator
- Environmental Impact Assessment
- Trail Locator
- Citizen Science
- Model Organization
- Impact Briefing
- Water Quality Inspections/Results

Economic Development



- Live, Work, and Locate
- Incentive Zones
- Site Selector
- Event Locator

GIS/IT



- Executive Dashboard
- Briefing Book
- Community Parcels
- Community Addresses
- Maps and Apps Gallery
- Crowdsource Manager
- Crowdsource Reporter
- Service Catalog/Hosted Services
- Model Organization
- PLSS

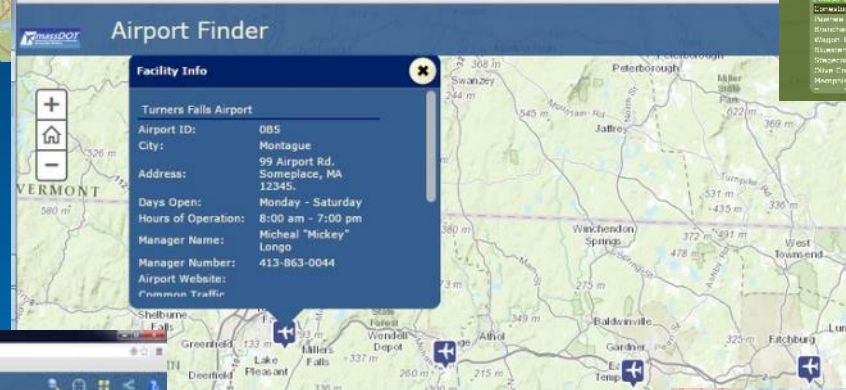
ArcGIS for State Government



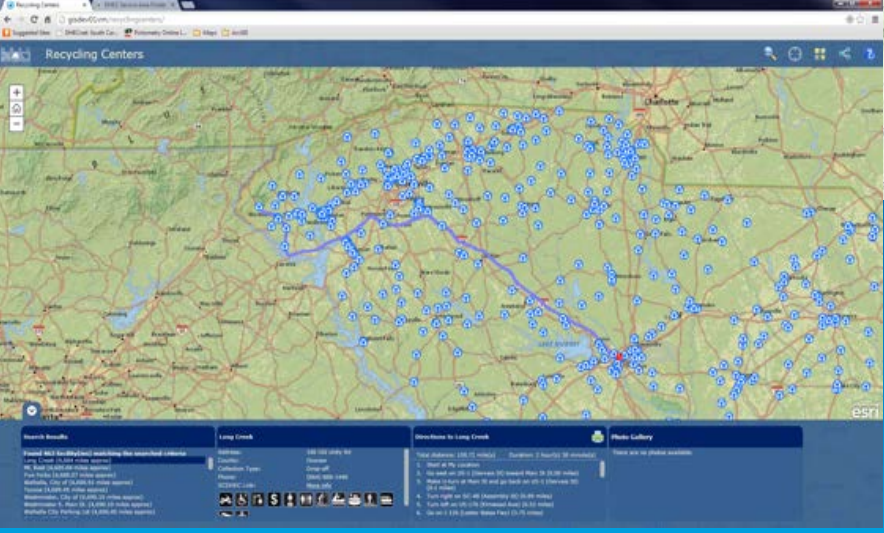
Permit Status
State of Tennessee



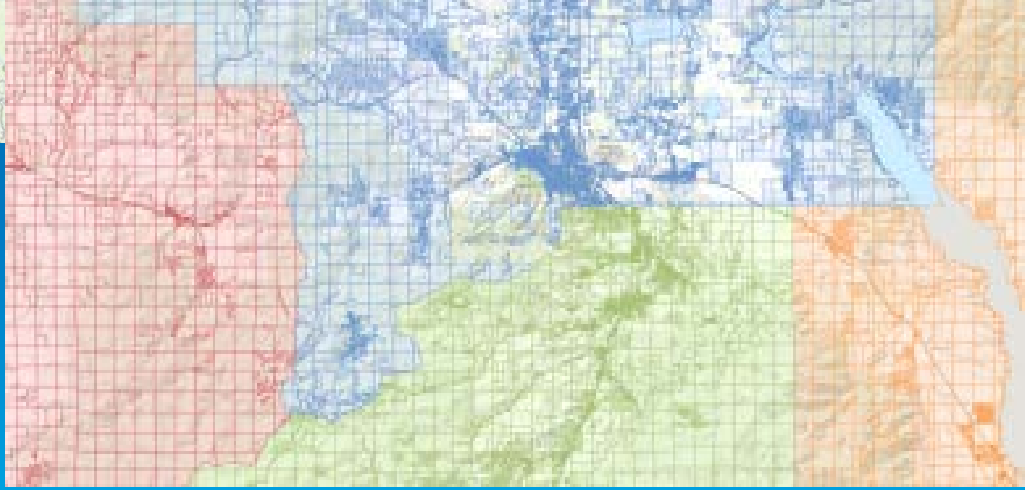
Park Locator
State of Nebraska



Airport Finder
State of Massachusetts



Recycling Centers
State of South Carolina



Community Parcels
State of Wisconsin, New Mexico ...

Show Me!

ArcGIS for State Government



Transportation



- Railroad Crossing Inspection
- Road Closures
- Bridge Inventory
- Environmental Impact
- Crash Analysis
- Guardrail Inventory
- Pavement Marking Inventory
- Sign Inventory
- Signal Inventory

Public Health



- Beach Monitoring
- Water Quality Monitoring
- Restaurant Inspection
- Restaurant Inspection Results
- My Health Services
- Birth Outcomes
- Model Organization

Emergency Management



- Flood Planning
- Special Event Planning
- Emergency Assistance
- Evacuation Zones
- Road Closures
- Damage Assessment *
- My Hazard Information
- EM Maps
- Model Organization
- Public Information Map
- Local Impact Map
- Road Closures
- CAMEO Tools
- Incident Briefing
- Health and Safety Reports
- Damage Assessment Dashboard
- Floodplain Inquiry
- Emergency Assistance
- Evacuation Zone

Environment and Fish and Wildlife



- Permit Status *
- Permit Inspection
- Hunting License Locator
- Water Access Locator
- Wildlife Management Area Locator
- Environmental Impact Assessment
- Trail Locator
- Citizen Science
- Model Organization
- Impact Briefing
- Water Quality Inspections/Results

Economic Development



- Live, Work, and Locate
- Incentive Zones
- Site Selector
- Event Locator

GIS/IT

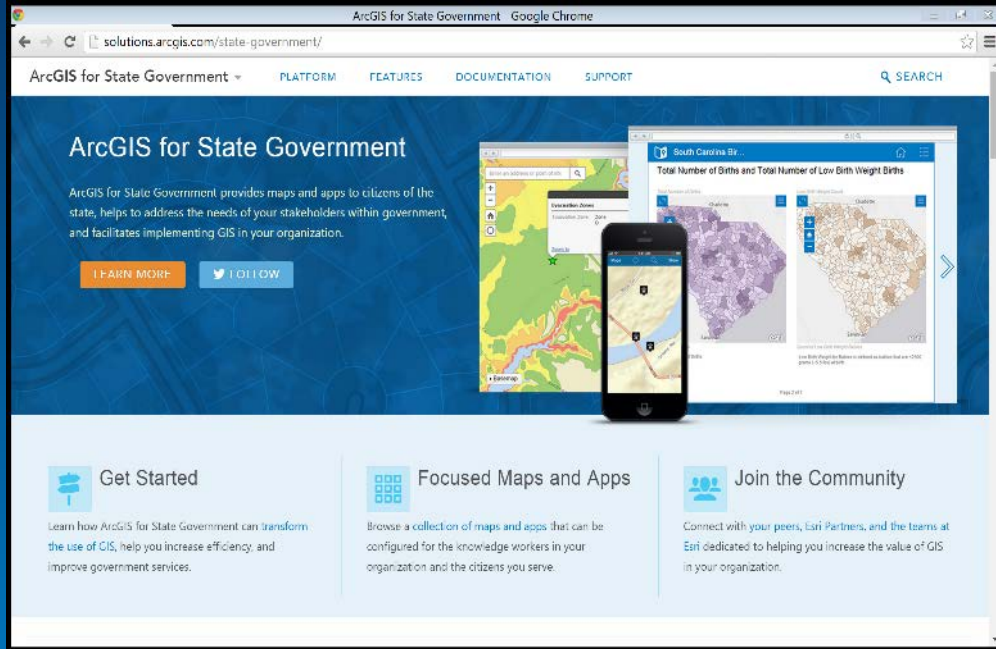


- Executive Dashboard
- Briefing Book
- Community Parcels
- Community Addresses
- Maps and Apps Gallery
- Crowdsource Manager
- Crowdsource Reporter
- Service Catalog/Hosted Services
- Model Organization
- PLSS

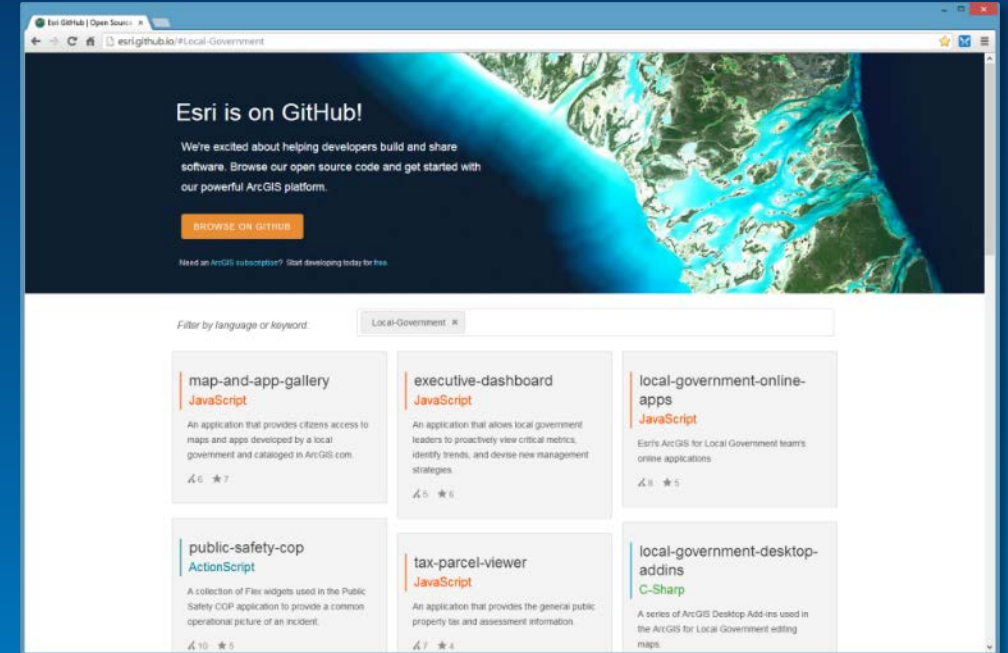
ArcGIS for State Government

The Community

It's not just about the technology



Destination where government's can collaborate



Place where developers can contribute too

Ongoing dialog to share success stories and learn from others

What's Next?

ArcGIS for State Government



July 2015 Release

- New offerings
 - Park and Recreation Locator, WMA Locator, Water Access Locator Public Land Survey Editing, Citizen Science, Event Locator, Environmental Impact Polling ...
- Enhancements to existing offerings
 - Crowdsourcing Applications, Community Parcels, Briefing Book, Site Selector
- Support and maintenance
 - Service Catalog, Symbology, Solution Site

Road Ahead

Post UC Plans

- **New maps and apps**
 - Policy –Election Results, My Representative
 - GIS/IT– Community Roads, Administrative Boundary Aggregation
 - Economic Development – Photo Survey, Event Registration,
 - Emergency Management–Special Events, Situational Awareness, Debris Reporting
 - Transportation– Signaled Intersections, Pavement Management, Capital Project Tracking
- **Incorporate additional platform offerings**
 - ArcGIS Pro, Web App Builder, GeoEvent Processor, ArcGIS Apps
- **Continued Community Engagement**
 - Meetups, videos, and solution site improvements
 - Expanded partner & professional services offerings

UC Events

- ArcGIS for State Government Sessions
 - Five different tech workshops
- Demo Theater
- Solution Island
 - Focused conversations / support

Thank you...

<http://solutions.arcgis.com>



<http://meetup.com/ArcGIS-for-State-Government/>



@ArcGISStateGov

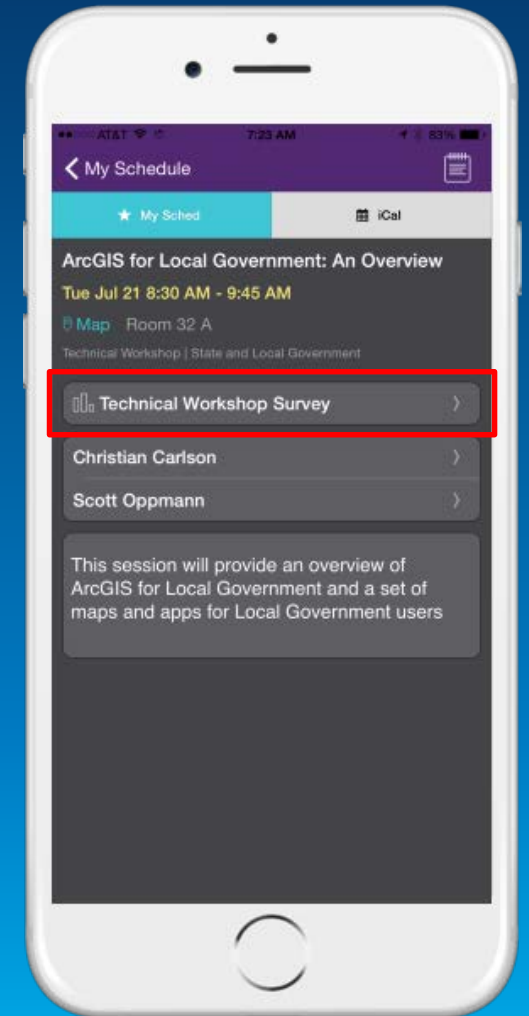


<http://esri.github.com>

Please fill out the session survey:

Mobile – Esri Events UC mobile app

Paper – Pick up and place in drop box





Understanding our world.