



Economic Development Maps and Apps for State and Local Governments

Lindsay King

Nikki Golding

Chris Buscaglia

Agenda

- Introduction
- Solution Offering
- What's Next
- Your Feedback



ArcGIS as a Platform



Making Mapping and GIS Available Across Your Organization

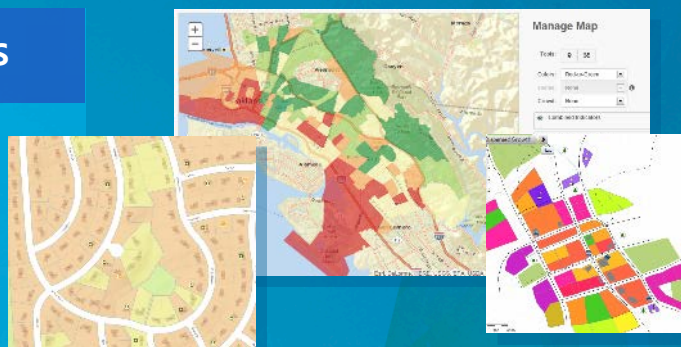
Transforming the Role of GIS

ArcGIS Solutions

Platform Configurations for Organizations

Ready-to-Use Maps and Apps

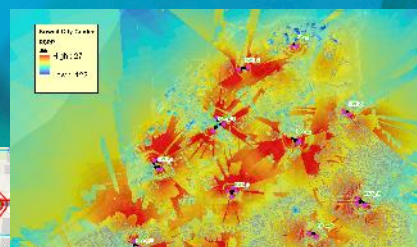
- Easily Configured
- Fully Supported
- Open Source
- Free



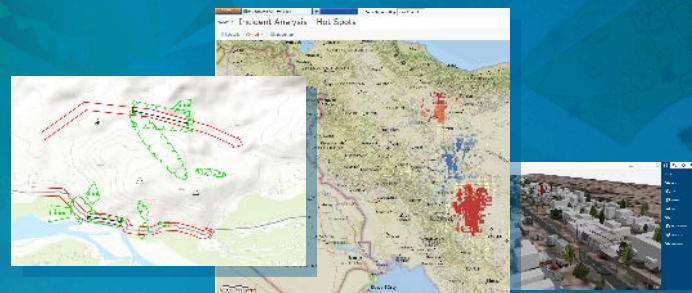
Local and State Government



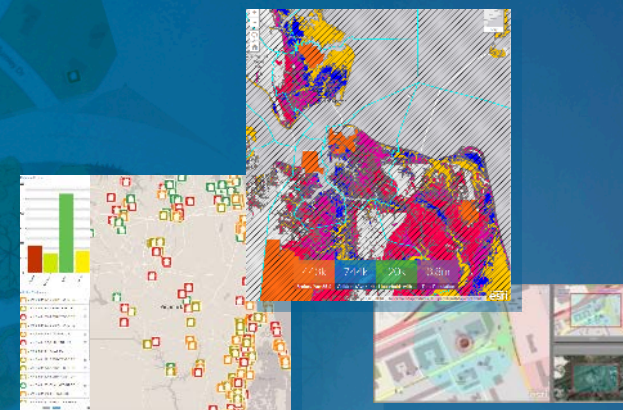
Parks and Gardens



Utilities and Telco



Military and Security



Public Safety and Emergency Management

... Improving Productivity and Leveraging Best Practices







New
Location

A common experience....

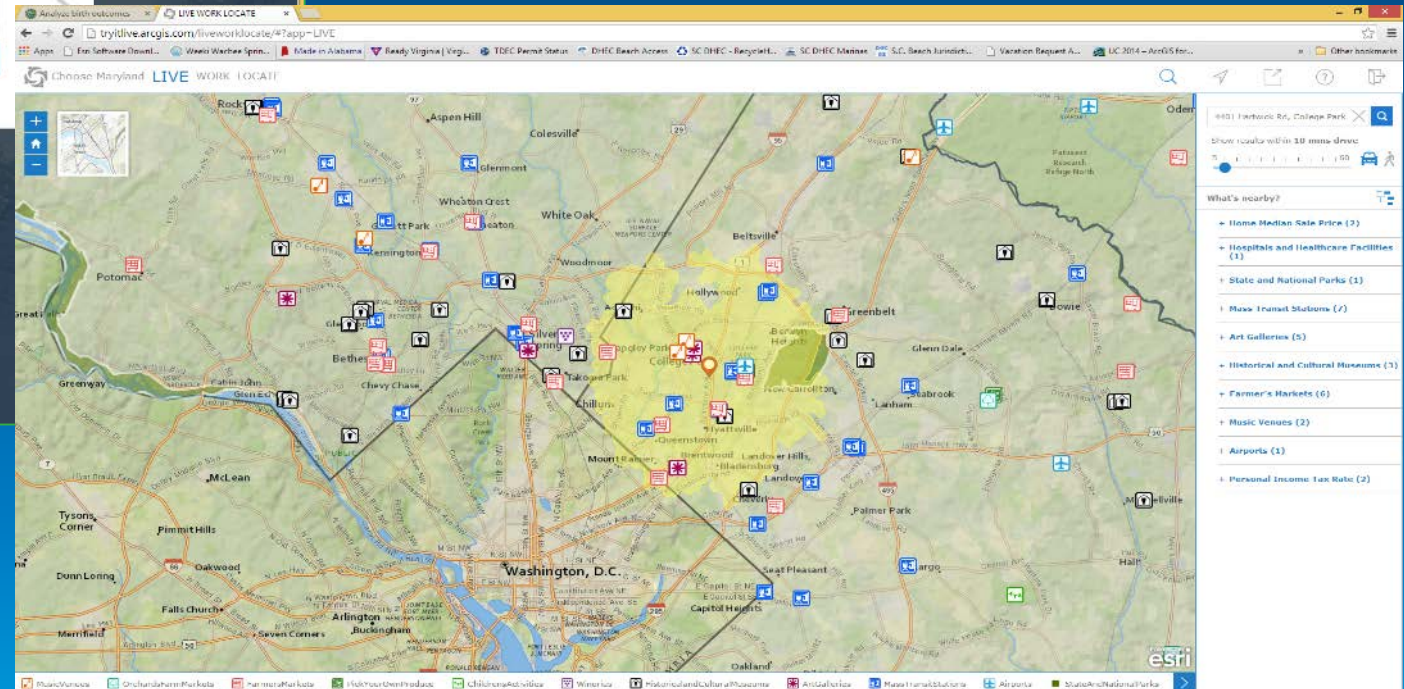
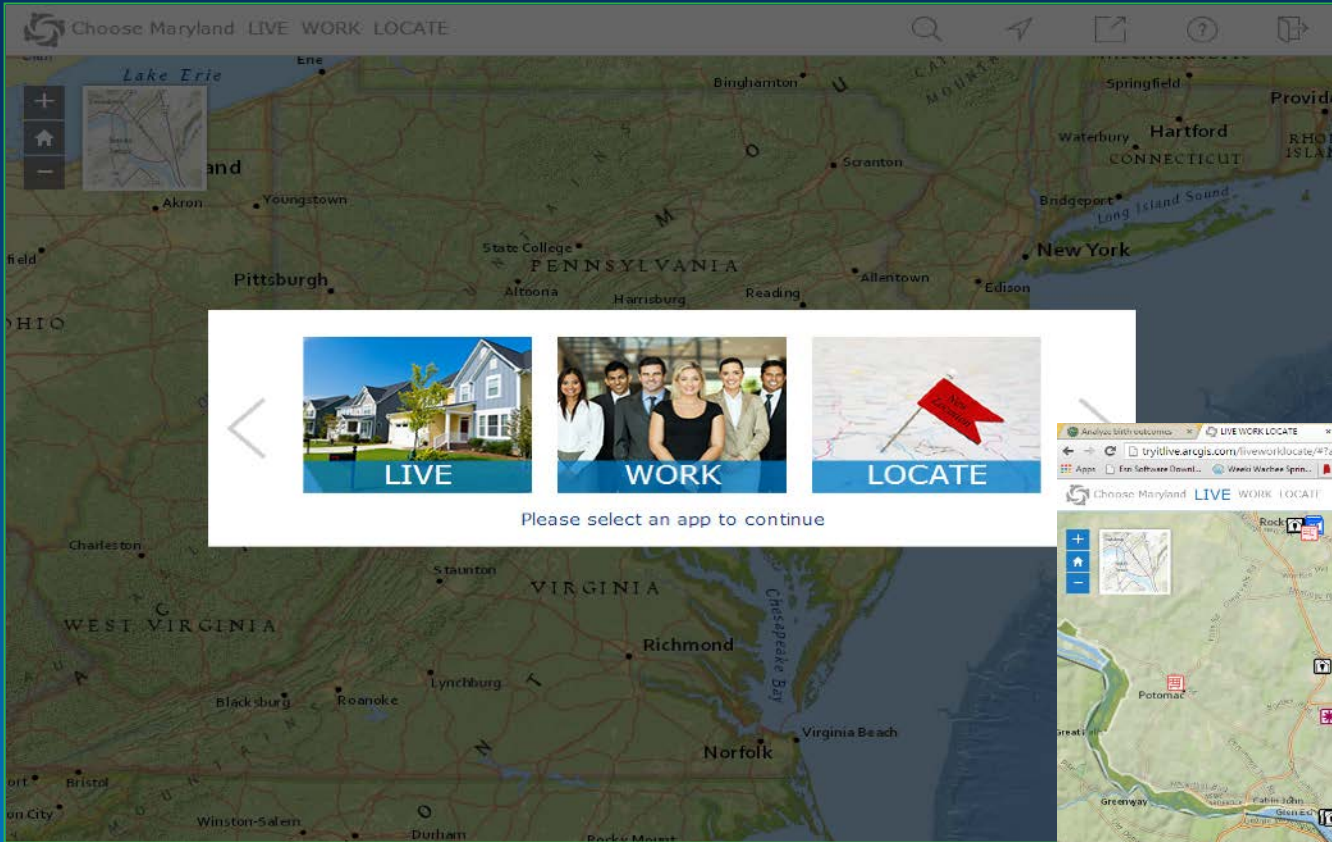
- Workforce Composition and Labor Market
- Recruit new and support existing Businesses
- Locate, Expand, Find Properties
- Understand the Population/Demographic
- Tourism
- Jobs and Employment





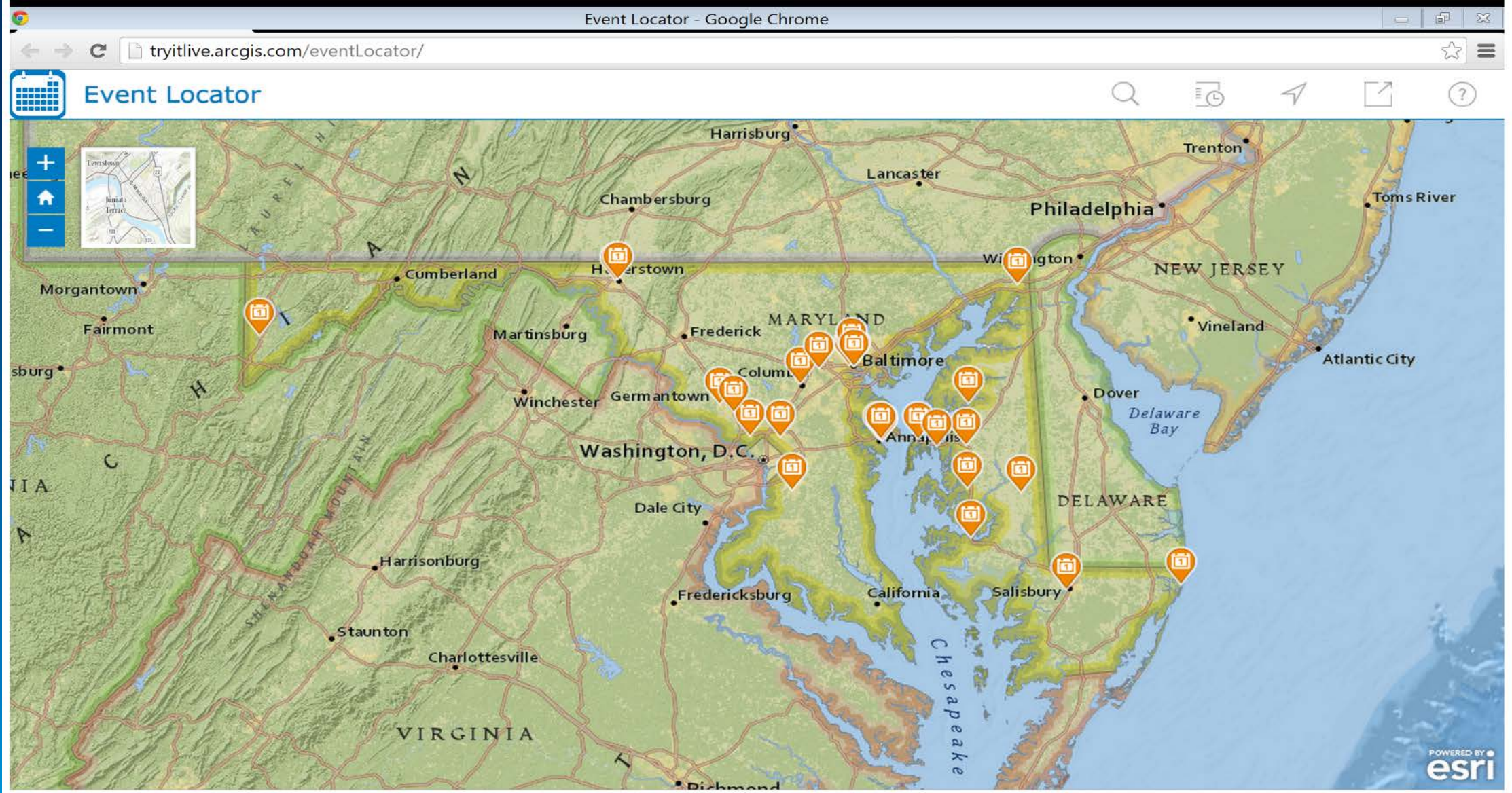
Our Mission

To help you....



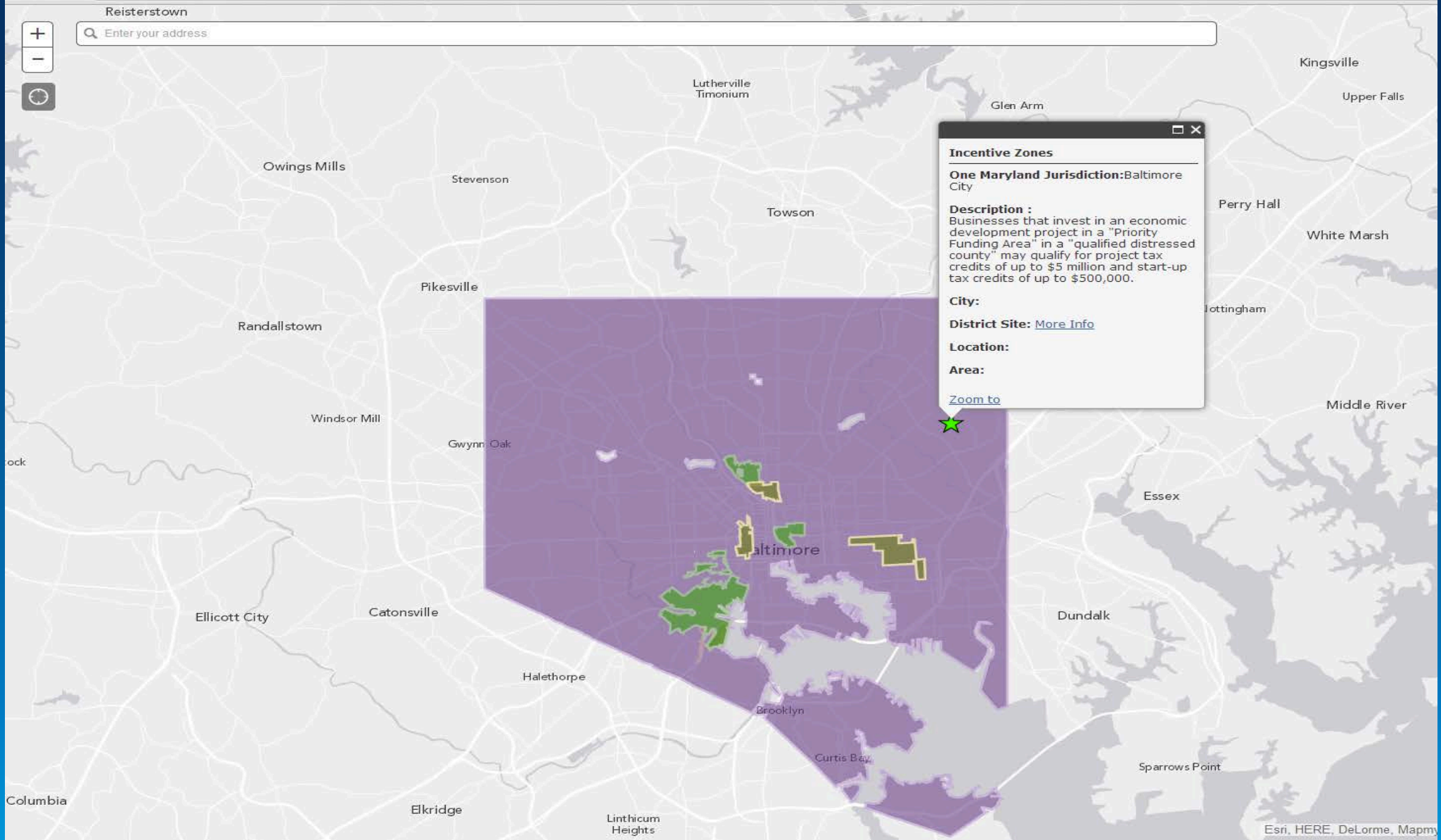
Economic Development :

[Live, Work, Locate](#)



Economic Development :

Event Planner



Economic Development

[Incentive Zones](#)

Site Selector

Buildings
Sites
Business
Communities

[Back To Result](#) Download Select ▾

Property Information

Name: 10726 Tucker Street
 Address: 10726 Tucker Street
 City: Beltsville
 State: MD
 Zipcode: 20705
 Type: Industrial-Light
 Area (sqft): 149000

Neighborhood Information

Labor Force Participation Rate	1,145
Total Population	1,818
Total Households	600
Average Household Size	3
Average Household Income	\$82,365
Median Household Income	\$70,008
Per Capita Income	\$33,959
Total Housing Units	650
Owner Occupied HUs	282
Renter Occupied HUs	318
Vacant Housing Units	40
Median Home Value	\$232,071
Average Home Value	\$235,954

Esri, HERE, DeLorme, MapmyIndia, © OpenStreetMap contributors, and the GIS user community

Economic Development : | Site Selection

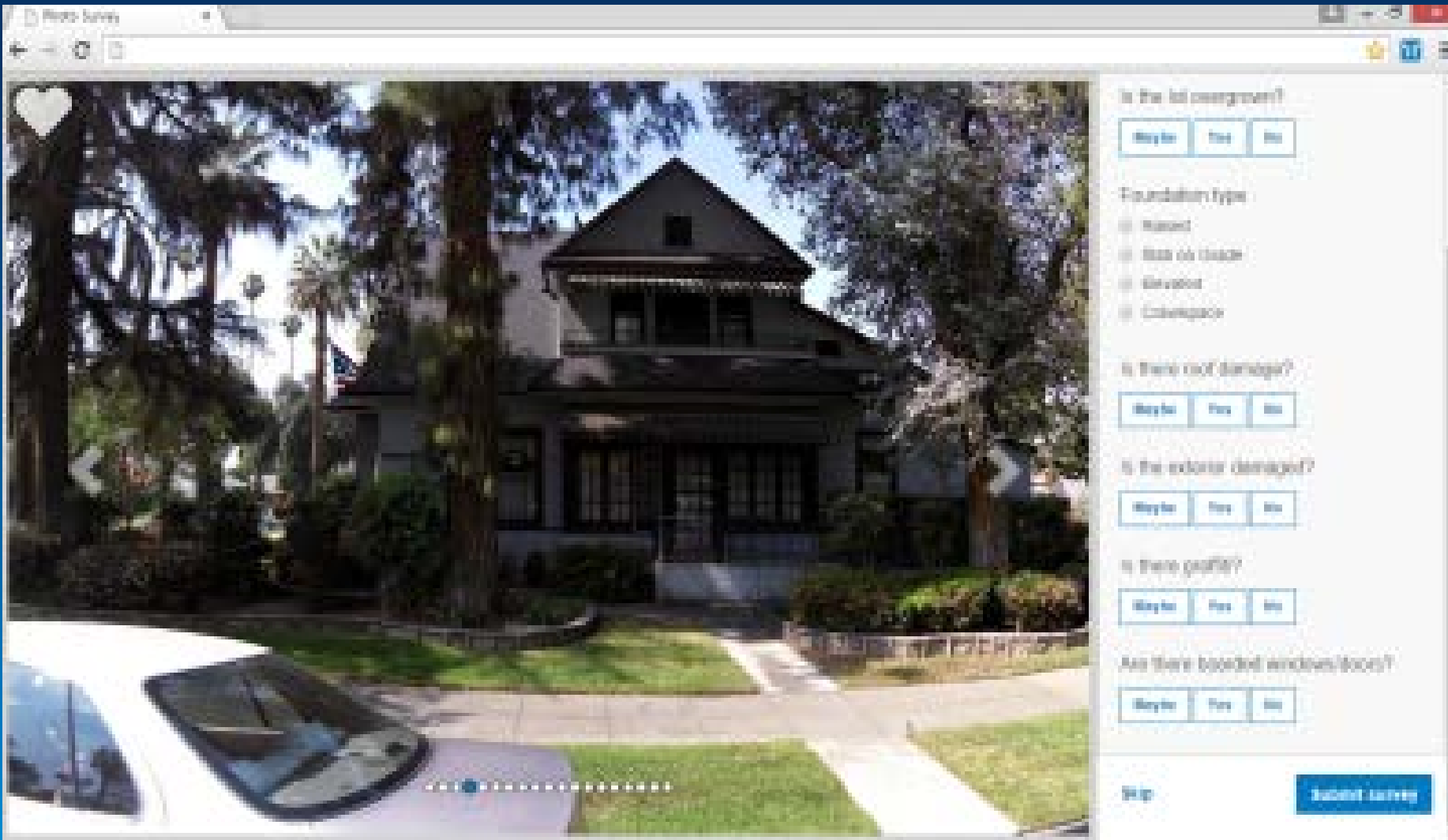
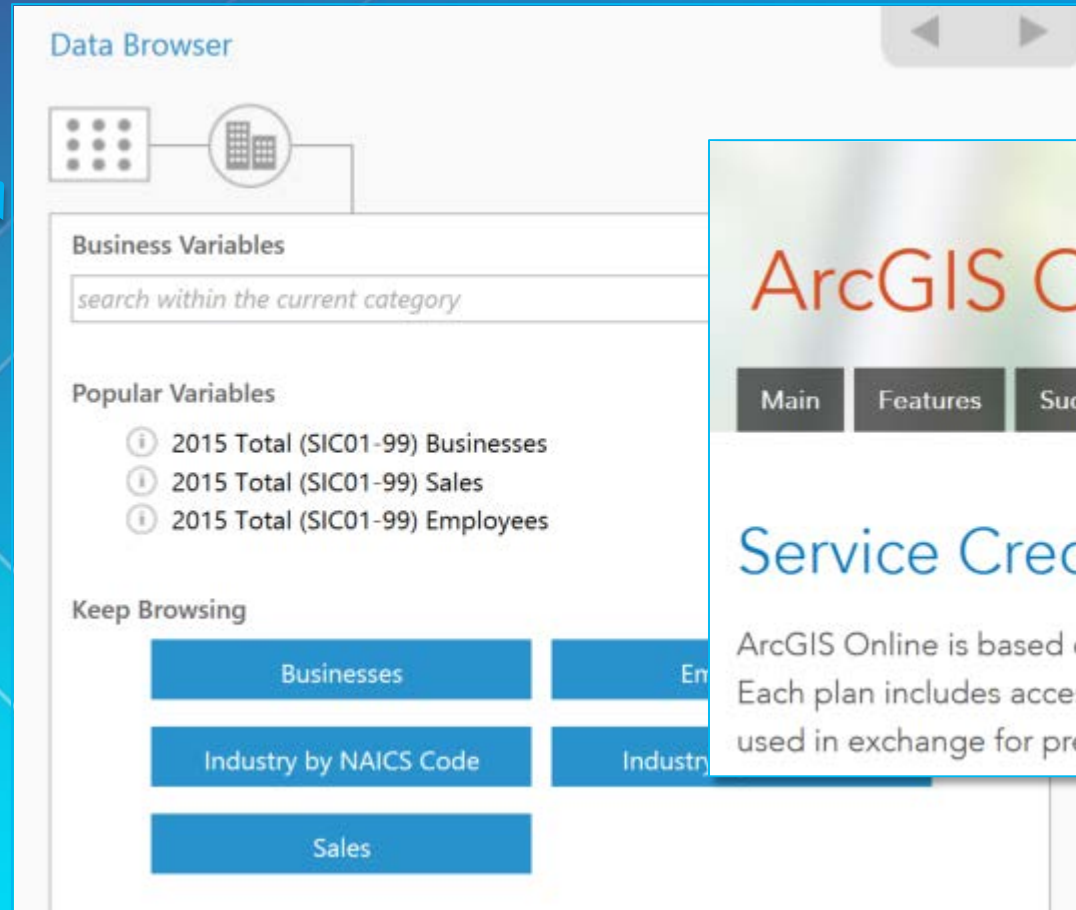


Photo Survey

GeoEnrichment Data Browser

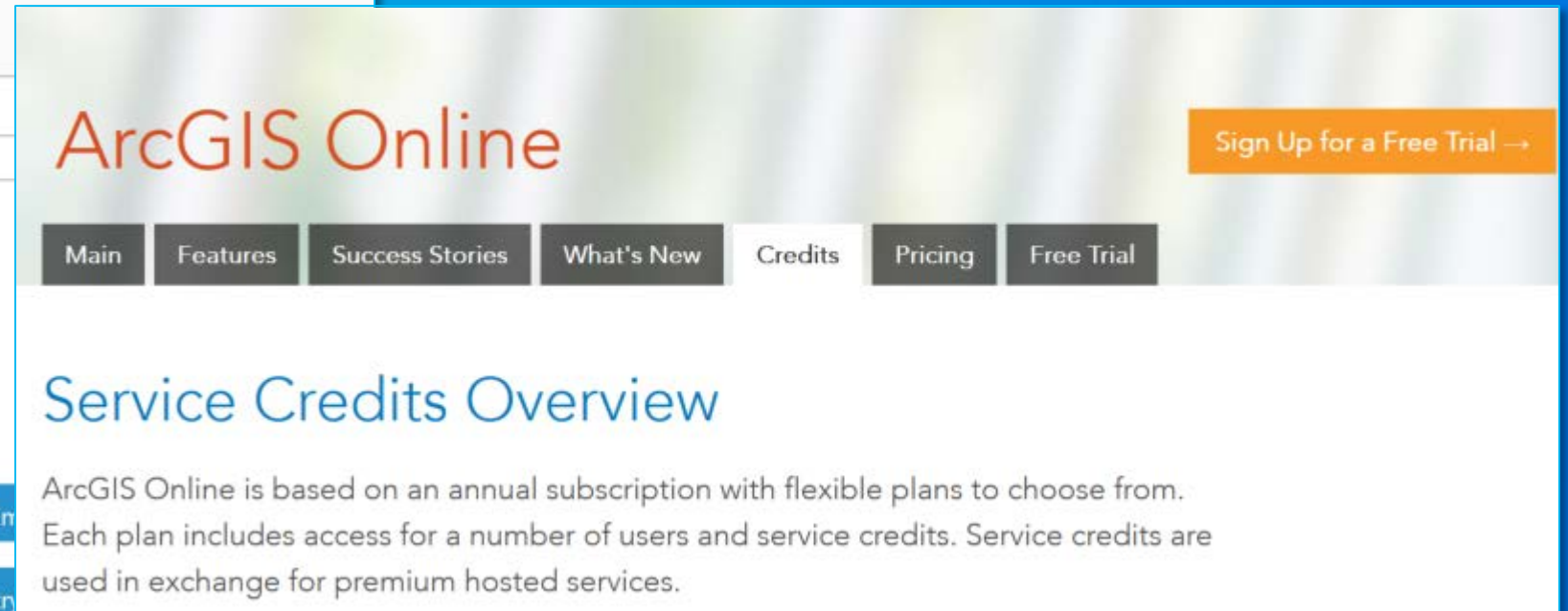
http://resources.arcgis.com/en/help/arcgis-rest-api/index.html#/Get_variables/02r300000266000000/



The screenshot shows the 'Data Browser' interface. At the top, there are navigation arrows and a 'Data Browser' title. Below the title, there are two icons: a grid of dots and a building icon. The main content area is divided into sections: 'Business Variables' with a search bar containing the text 'search within the current category'; 'Popular Variables' with three items: '2015 Total (SIC01-99) Businesses', '2015 Total (SIC01-99) Sales', and '2015 Total (SIC01-99) Employees'; and 'Keep Browsing' with several blue buttons labeled 'Businesses', 'Industry by NAICS Code', and 'Sales'.

ArcGIS Online Service Credits

<http://www.esri.com/software/arcgis/arcgisonline/credits>



The screenshot shows the 'ArcGIS Online' website. The header features the 'ArcGIS Online' logo in orange and a 'Sign Up for a Free Trial' button in orange. Below the logo is a navigation menu with buttons for 'Main', 'Features', 'Success Stories', 'What's New', 'Credits', 'Pricing', and 'Free Trial'. The main content area is titled 'Service Credits Overview' and contains the text: 'ArcGIS Online is based on an annual subscription with flexible plans to choose from. Each plan includes access for a number of users and service credits. Service credits are used in exchange for premium hosted services.'



Step 1: Data

- Authoritative Data
- Esri Data
- Shared Data



Step 2: Load or Publish production data

- Set source / target
- Schedule scripts



Step 3: Author the maps

- #### Configure maps
- Choose Basemap
 - Add layers
 - Configure popups



Step 4: Deploy the apps

- #### Configure the web apps
- Populate webmap id
 - Define Layer Information
 - Configure Proxy

What do you need?

Road Ahead

Post UC Plans

New Maps and Apps:

- Environmental Protection - Environmental Impact Assessment, Permit Status (hosted)
- Transportation - Crash Analysis
- Economic Development – Site Selection, Trip Planner
- GIS/IT – New Locator App, Address Consolidation Workflow
- Policy – Policy Support App
- Emergency Management*
- Crowd Sourcing/Constituent Engagement

Growth across the platform:

- Web App Builder, Web Application Templates, ArcGIS Pro



The Community

It's not just about the technology

Thank You – Offering 1739



<http://solutions.arcgis.com/state-government>



<http://www.linkedin.com/groups?gid=5114903>



@ArcGISStateGov



<http://esri.github.com>



Understanding our world.