



# Using the Operations Dashboard for ArcGIS

Jay Chen / Tif Pun

Overview of Esri's App Strategy

# Agenda

Using an Operation View

Building an Operation View

What's Next for Operations Dashboard

Questions

# ArcGIS

An Integrated  
Web GIS Platform



Providing mapping, analysis, data management, and collaboration





Microsoft Office  
Microsoft SharePoint  
Microsoft Dynamics  
SAP Business Objects  
MicroStrategy  
IBM COGNOS  
Salesforce.com  
plus an SDK framework



ANDROID

IOS / MAC

WINDOWS

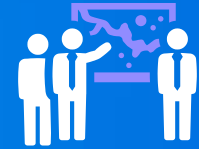
WEB BROWSERS

**Apps for Everyone**

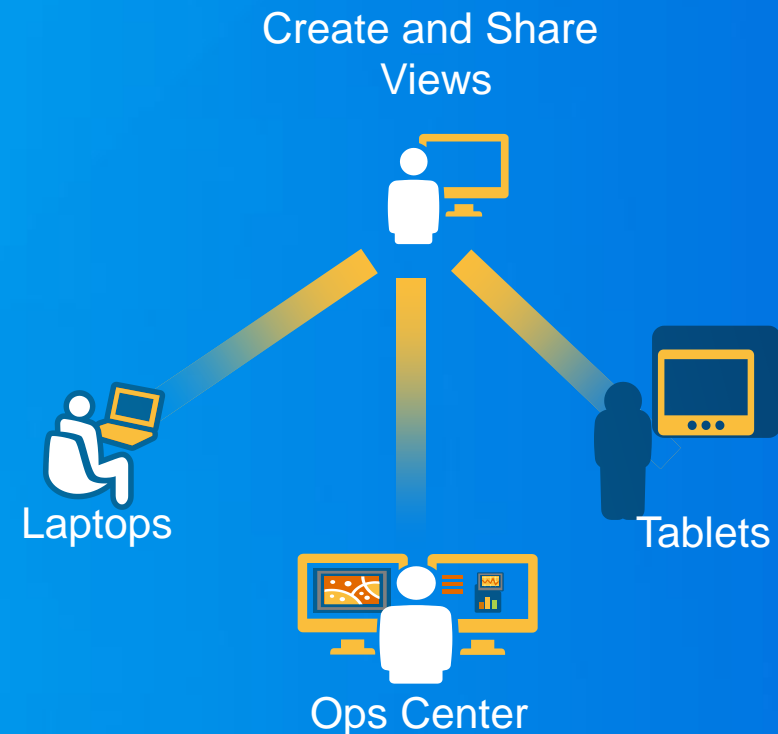
a suite of easy to use apps that work on any device, anywhere, anytime



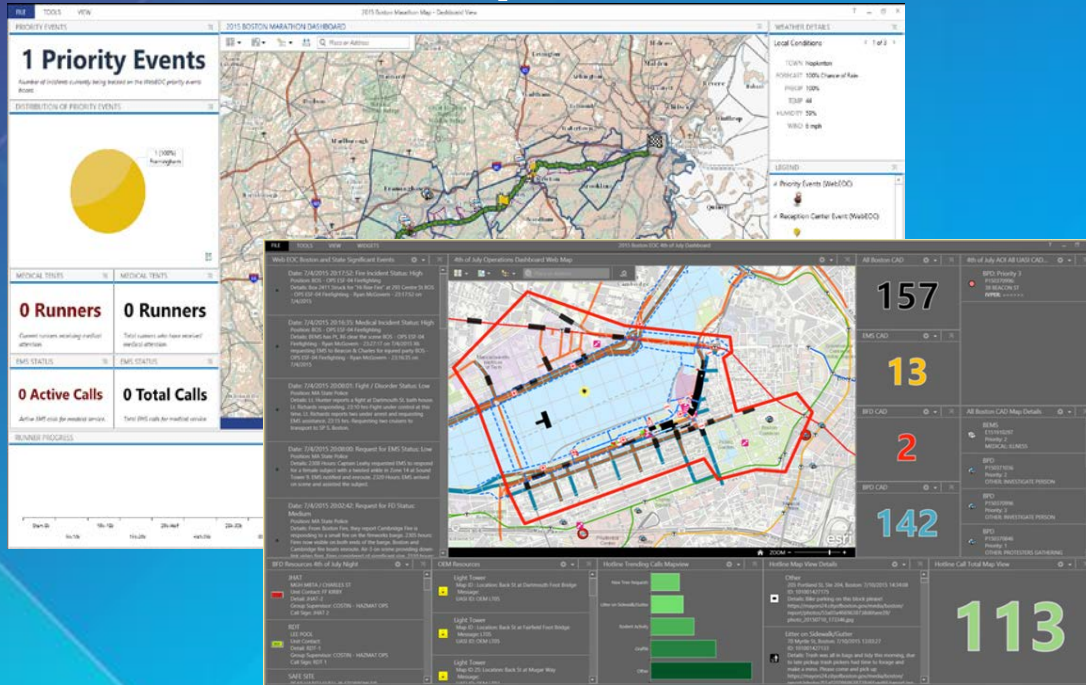
# Operations Dashboard for ArcGIS



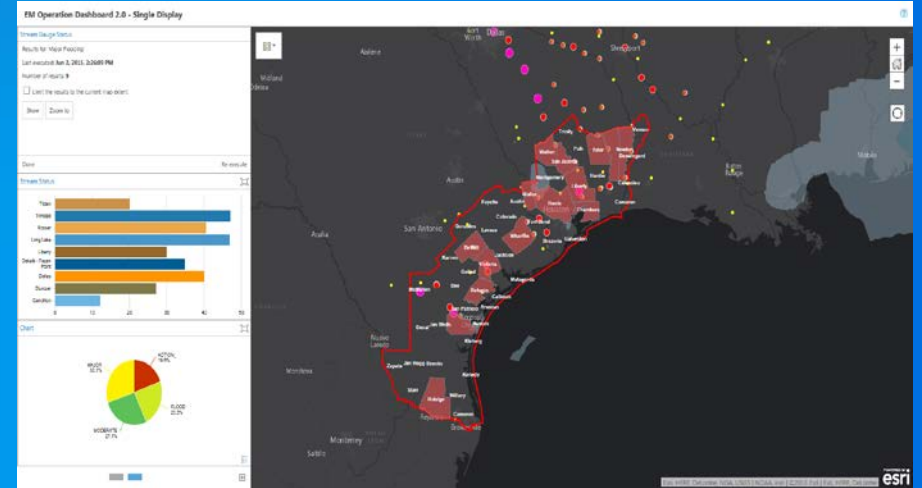
- **30,000 feet overview**
  - Monitor day to day operations
  - Manage planned and unplanned events
  - Visualize key performance indicators
- **Ready to use widgets anyone can configure**
  - Maps, Legend,
  - Bar Charts, Pie Charts, Histograms
  - Indicators, Gauges
  - Lists, Feature Details
- **Various map tools and feature actions**
  - Interact with the map (e.g. set layer visibility)
  - Perform actions on features (e.g. follow a moving truck)
- **Extensible using ArcGIS API for JavaScript**
  - Code it once, use in Windows and browser platforms



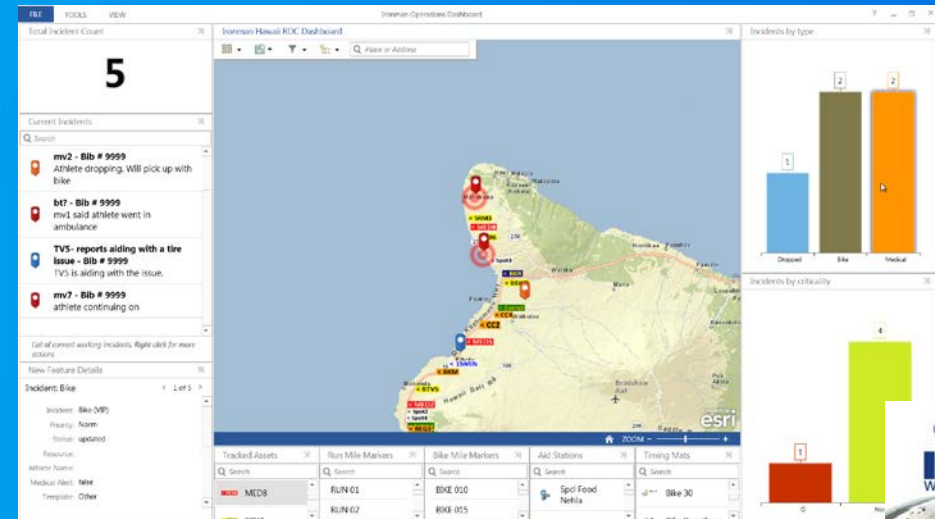
# Customer Examples



City of Boston



US Army Corps of Engineers, Texas



Ironman World Championships

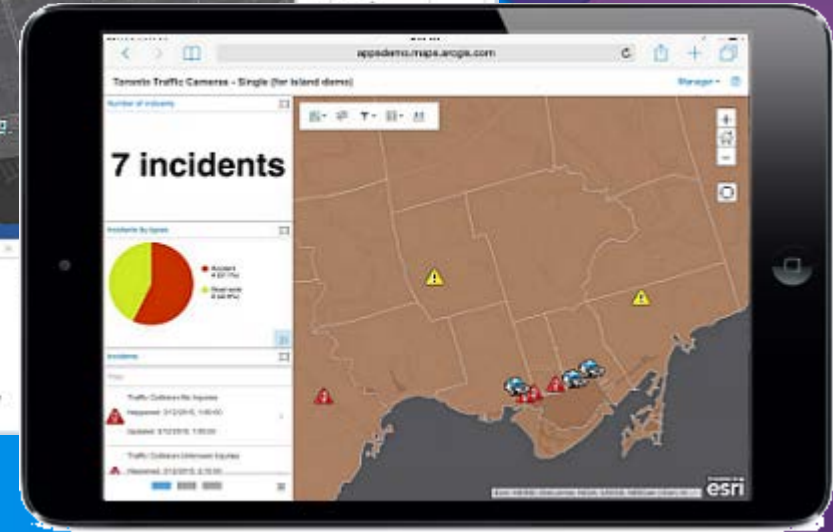


# Supported Platforms

- **Use it with ArcGIS Online or Portal for ArcGIS**
- **Operations Dashboard running on Windows**
  - ClickOnce deployment through ArcGIS Online or Portal for ArcGIS
  - It's both an authoring and viewing app
  - Supports multiple-display and single-display view
  - Requires named user account
- **Operations Dashboard running in browser**
  - It's a viewer!
  - No deployment needed, only requires a browser!
  - Supports single-display view
  - Supports anonymous access

# Demo

## Use the Operations Dashboard





# Working with Real-time Data

- Many sources of real-time data include:
  - Vessels (AIS), Vehicles (AVL)
  - SCADA
  - Weather
  - People
  - Social Media
- ArcGIS Server – GeoEvent Processor Extension
- Challenges
  - How do I connect it to my apps?
  - How can I process/analyze it?
  - How do I make it available to others?



# Creating and Using Operation Views

## Components

- Widgets
- Map Tools
- Feature Actions
- Data Sources

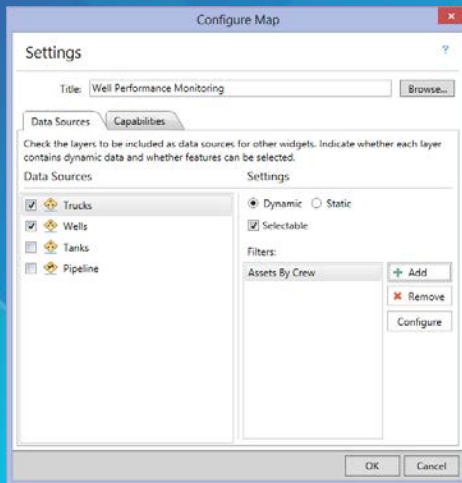
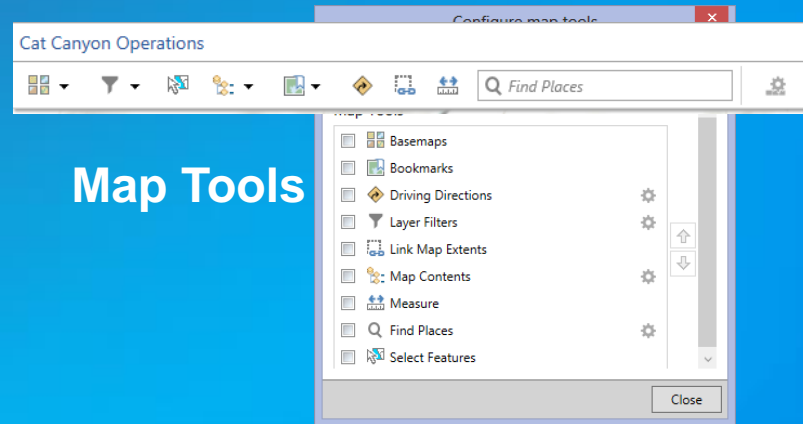
## Dynamic, Role Based Access

- Widgets are dynamic, interactive
- Maps provide spatial context
- Create and Share Focused views...

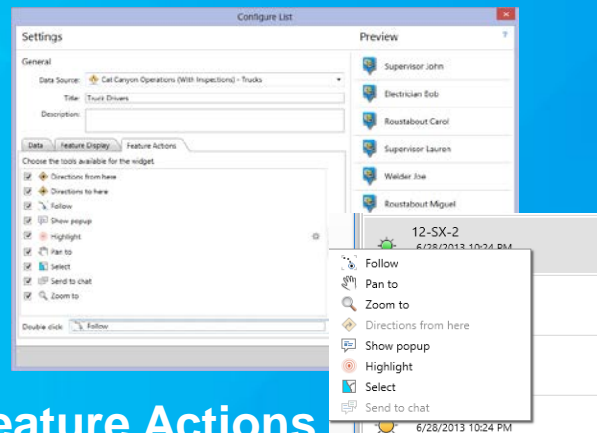
## Two Types of Views

- Single Display
- Multiple Display

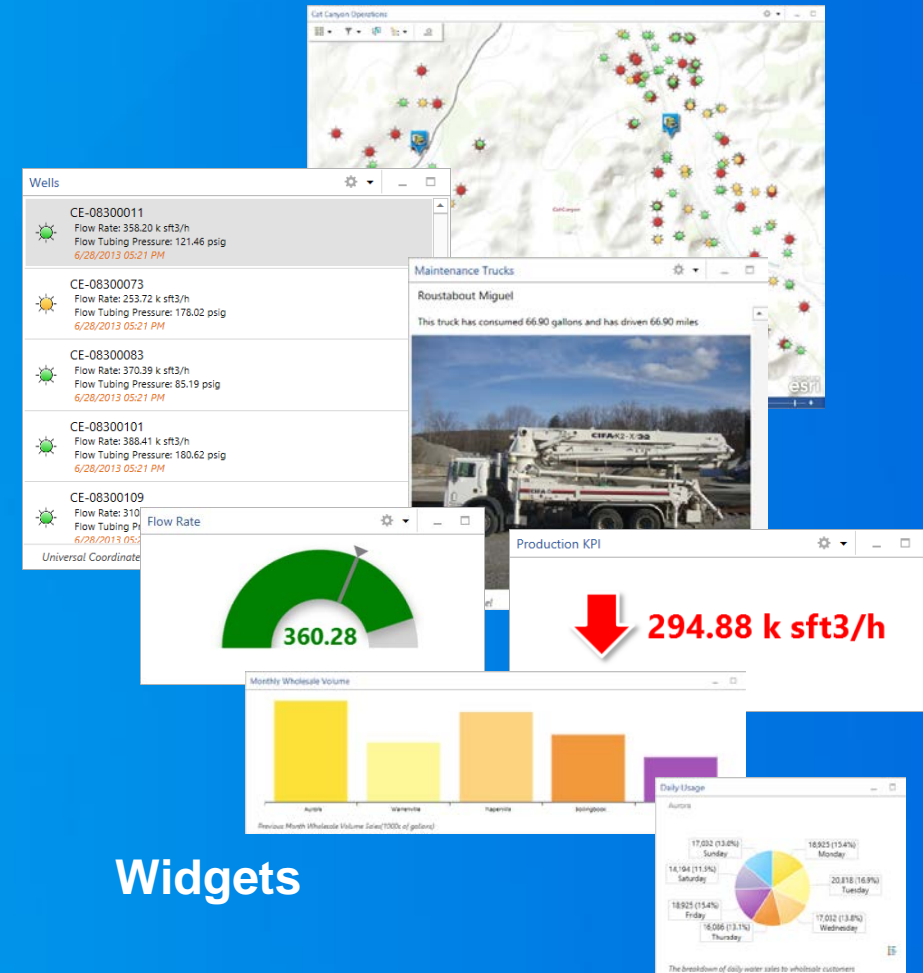
# Composition of an Operation View...



Data Sources



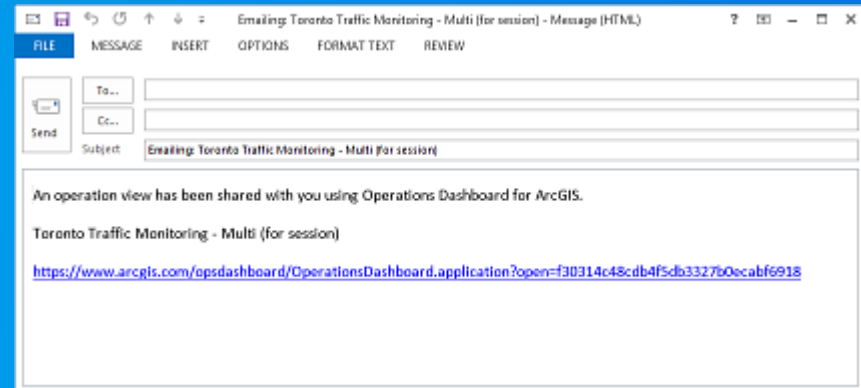
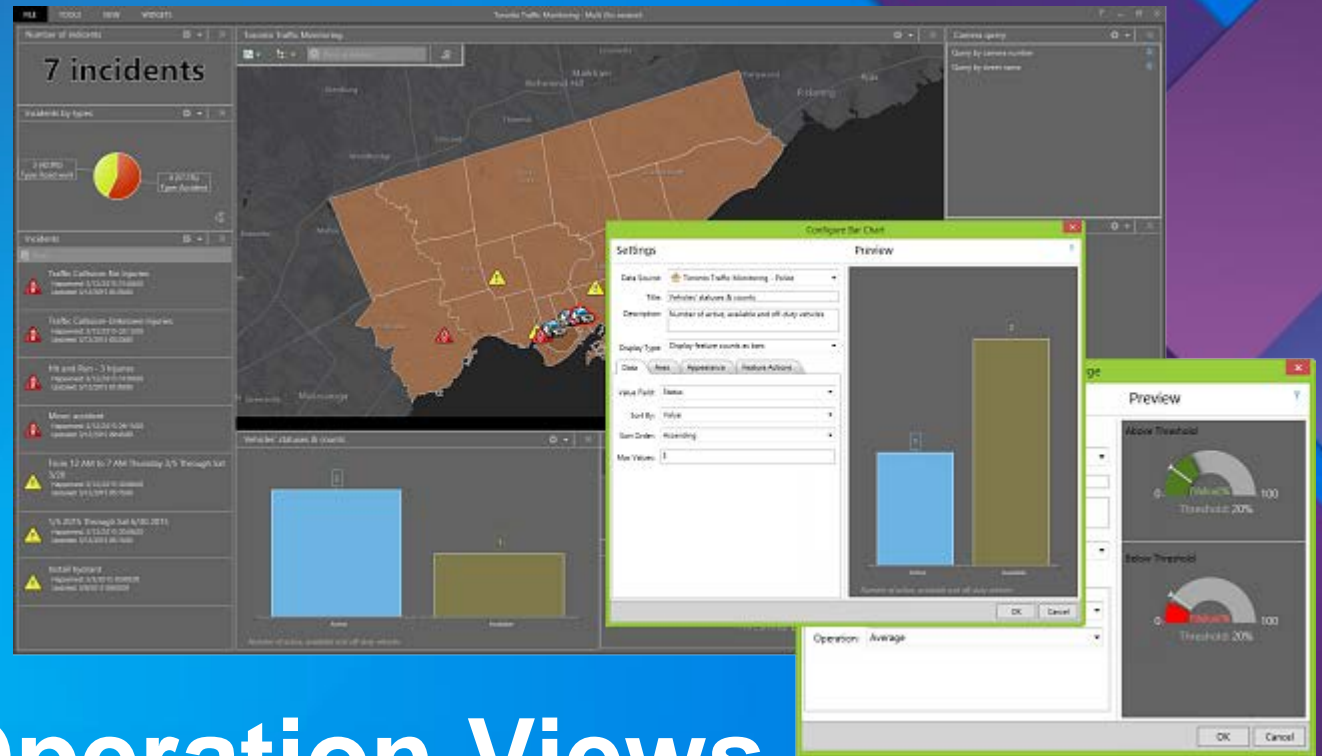
Feature Actions



Widgets

# Demo

## Create and Share Operation Views





# Settings in the webmap used by the demo operation view

The screenshot displays the ArcGIS webmap interface for "Toronto Traffic Monitoring (for session)". The interface includes a top navigation bar with options like "HOME", "Details", "Add", "Edit", "Basemap", and "Analysis". A "Contents" panel on the left lists layers: "Police", "Road Incidents", "Traffic Cameras", "Police Divisions", and "Dark Gray Canvas".

Two red circles highlight the "Refresh Interval" and "Configure Pop-up" settings for the "Traffic Cameras" layer. The "Refresh Interval" setting is set to "Refresh layer every 0.1 minutes". The "Configure Pop-up" dialog is open, showing the "Pop-up Contents" section with a "Configure" button. The "Pop-up Media" section is also visible, with a red circle highlighting the "URL" field, which contains the text: "Image URL comes from the 'Traffic\_Image' attribute".

A "Bookmarks" popup window is also visible, listing "Bookmarked places": "Waterfront", "North York", and "East York", each with a pencil icon and a red 'X' icon. The "Add Bookmark" button is at the bottom of the popup.

The map shows a view of Toronto with several traffic camera icons (red and yellow) overlaid on the map. The "esri" logo is visible in the bottom right corner.

## Road ahead

- Allow Portal for ArcGIS users to extend the app using the ArcGIS API for JavaScript
- Rebuild the app using ArcGIS API for JavaScript
  - Stream layer support
  - Smart mapping support
  - Support of 3D
- Related table

What do you want to see??

# Upcoming Sessions for Operations Dashboard

- **WEDNESDAY**

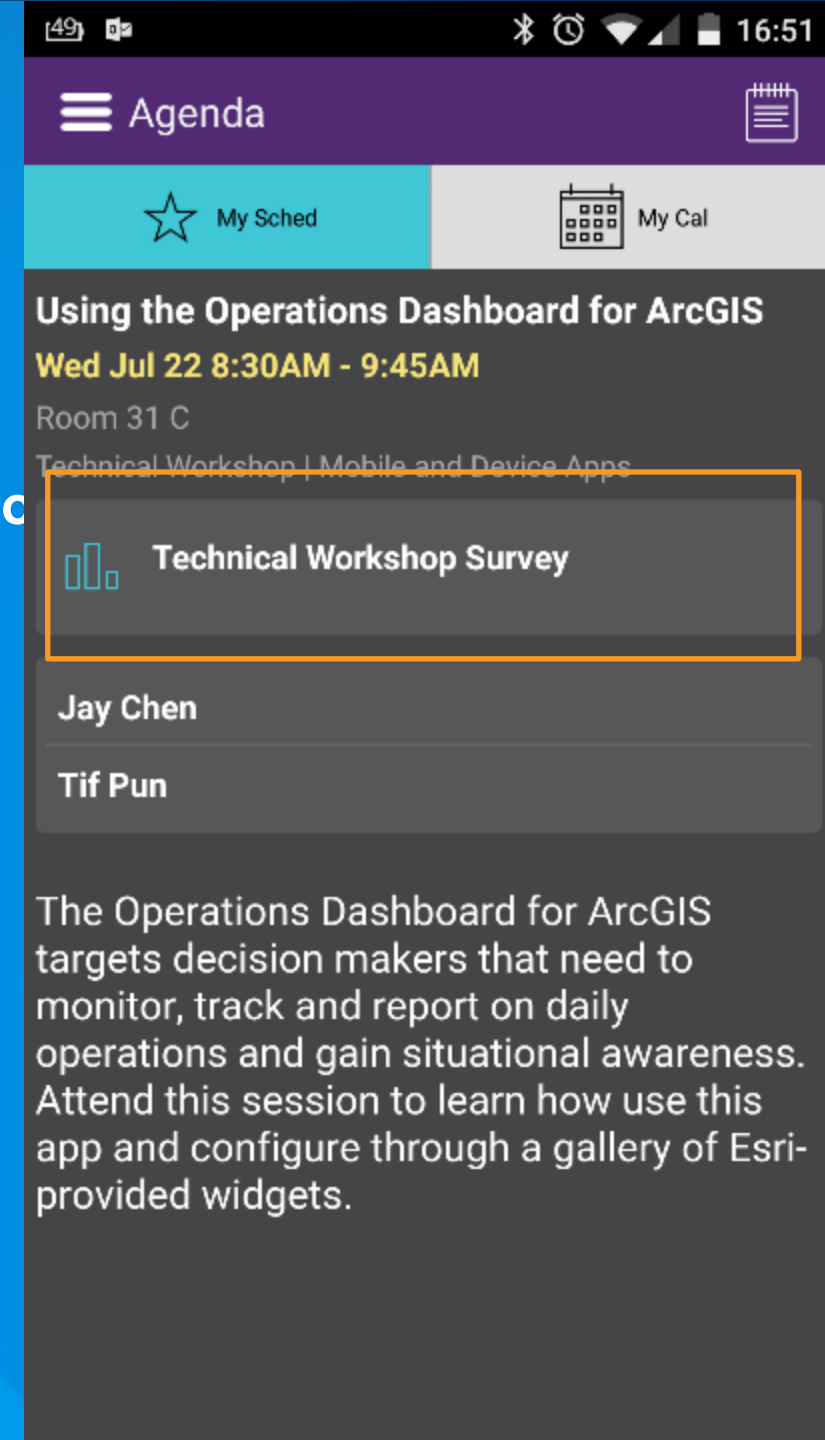
- 10:30 am – Demo Theater 10 – Extend Operations Dashboard with Custom Widgets
- 2:30 pm – Demo Theater 10 – Operations Dashboard: An Introduction
- 3:15 pm – Room 32 B – Extending Operations Dashboard (Tech Workshop)

- **THURSDAY**

- 3:15 pm – Room 32 A – Using Operations Dashboard (Tech Workshop)

# Thank you...

- Please fill out the session survey in your mobile app
- Select **Using the Operations Dashboard for ArcGIS** in the Mobile app
  - Use the Search Feature to quickly find this title
- Click “Technical Workshop Survey”
- Answer a few short questions and enter any comments





# Thank You!

<http://doc.arcgis.com/en/operations-dashboard/>

<http://forums.arcgis.com/>

<http://ideas.arcgis.com/>



Understanding our world.