



# Installation Overview of ArcGIS Pro

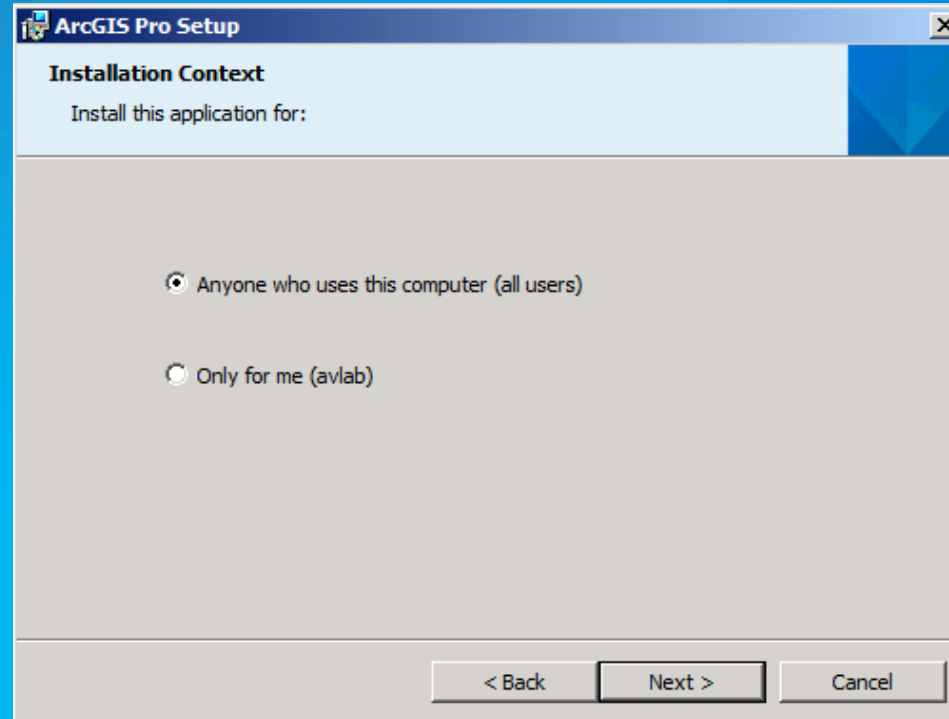
## The ArcGIS Pro Setup: some basics

- ArcGIS Pro is independent of ArcGIS for Desktop.
- The ArcGIS Pro setup is supported only on 64-bit Windows operating systems and requires .Net Framework 4.5.
- ArcGIS Pro can be installed using a setup.exe bootstrapper (for example, when installing a localized instance of Pro) or setup.msi (e.g., if using Group Policy).
- The ArcGIS Pro setup is dual-mode: it supports installations of ArcGIS Pro for either all users of a machine or a specific user.
- The ArcGIS Pro setup upgrades earlier releases in place: there is no need to manually uninstall a previous version when upgrading Pro.
- Setup packages are available for satellite products of ArcGIS Pro - ArcGIS Pro Help, ArcGIS Pro SDK, and Python 3.4.1 for ArcGIS Pro

## Dual-Mode Nature of the ArcGIS Pro Setup

- The ArcGIS Pro setup (along with those for Python for Pro and Pro SDK) is unique among ArcGIS installations in that it is dual-mode: one can install it either for the current user (“just for me”) or for all users on a machine (“everyone”).
- The installation context is specified at a User Interface setup dialog or through a command line property during a silent install.
- A per-machine installation requires elevated privileges to execute.
- A per-user installation is UAC compliant; elevated privileges are not required. Thus a user in a locked down environment can install ArcGIS Pro to their user profile.

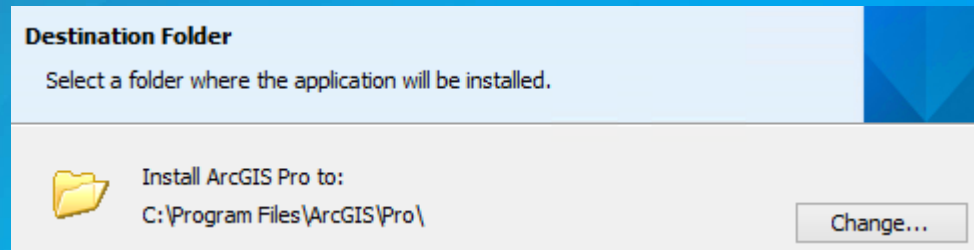
# Installation Context User Interface Dialog



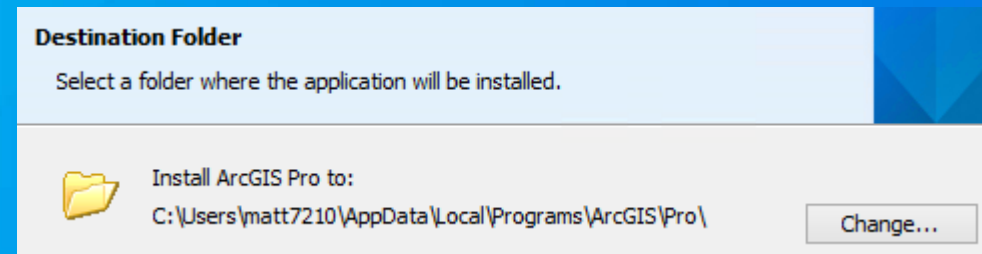
# Set Install Path Dialog for the Installation Contexts

Default installation directories for per-machine and per-user setups

## Per-machine



## Per-user



# Command-Line Driven Installation

## Options for installing ArcGIS Pro silently

- Following are two examples for installing ArcGIS Pro silently. Note that the silent dual-mode installation is governed by the same rules that proscribe a per-user setup from installing to a per-machine location (e.g., C:\Program Files\).

- Per-machine:

```
msiexec.exe /I INSTALLDIR=C:\MyArcGISPro\ ALLUSERS=1 /!*v  
%USERPROFILE%\AppData\Local\Temp\ArcGISPro.log /qn
```

- Per-user:

```
msiexec.exe /I ALLUSERS=2 /qn
```

- Note: The INSTALLDIR property is optional. A per-machine install defaults to C:\Program Files\ArcGIS\Pro\; a per-user to %USERPROFILE%\AppData\Local\Programs\ArcGIS\Pro. The ALLUSERS property defaults to 2 (per-user context) if not specified during a first-time install, and must be defined during a silent upgrade to ensure a successful result. The ArcGIS Pro installation administration contains more information about a silent installation of Pro, including a link to MSDN's Command-Line Options topic.

# Other Product Installations in the ArcGIS Suite

Setups for Pro Help, Pro SDK, and Python 3.4.1 for Pro

- **Python 3.4.1 for Pro** – a setup is available for users who need to use Python outside of ArcGIS Pro.
  - ArcGIS Pro includes an embedded Python, but this does not support running stand-alone Python scripts.
  - The Python 3.4.1 for Pro installation will install Python 3.4.1, all third-party requirements required by ArcGIS Pro, and an ArcGISPro.pth file that is used to identify all ArcGIS Pro folders required to run ArcPy.
- **ArcGIS Pro Help** – this setup installs the help libraries in an environment that may not have access to ArcGIS Pro's online help system. Localized versions of ArcGIS Pro Help are available in six other languages.
- **ArcGIS Pro SDK** – a .Net SDK available as of the Pro 1.1 release, this setup requires a supported edition of MS Visual Studio 2013



# ArcGIS Pro Updater

Getting ArcGIS Pro software updates dynamically

- **The ArcGIS Pro Updater is an application that allows administrators and individual users to dynamically upgrade an instance of ArcGIS Pro as well as Pro language packs, Pro Help, and Python for Pro.**
- **Notification of an available update appears either when ArcGIS Pro is started or, if in the middle of a session, by going to the About screen.**
- **If a user opts to run an update, a silent upgrade will proceed, after which they are prompted to restart Pro.**
- **Update notifications can be disabled.**

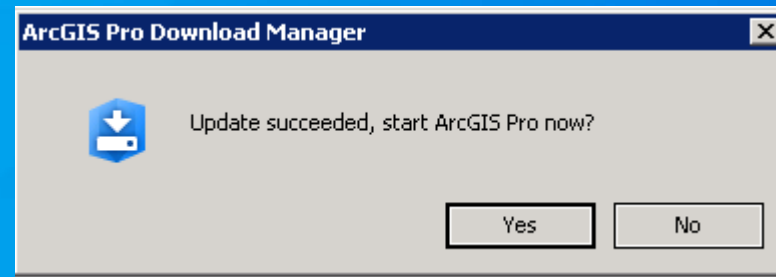


# ArcGIS Pro Updater - Continued



The screenshot shows the 'About' dialog box in ArcGIS Pro. On the left is a blue sidebar with a back arrow icon at the top and the following menu items: New, Open, Save, Save As, Portals, Licensing, Options, Add-In Manager, Help, About (highlighted), and Exit. The main content area has a white background and is titled 'About ArcGIS Pro'. It contains the following sections:

- Product Information**
  - ArcGIS Pro 1.1.0.3287
  - Copyright ©2015 Esri Inc. All Rights Reserved
  - [View the ArcGIS Pro Copyright and Trademarks](#)
  - [View the ArcGIS Pro Acknowledgements](#)
- This work is protected by copyright law and international treaties, extent possible under the law.
- Software Update**
  - [A software update is available for ArcGIS Pro.](#)
  - ArcGIS Pro: 1.1.0.3300
  - ArcGIS Pro - Paquete de idioma español: 1.1.0.3300
  - ArcGIS Pro Help: 1.1.0.3300
- [Download now](#) button
- Check for updates on startup



# ArcGIS Pro installation FAQs

- 1. Can ArcGIS Pro be installed on a machine with ArcGIS for Desktop?**
  - Yes. ArcGIS Pro can be installed on the same machine as other ArcGIS for Desktop releases, or on a machine without any Esri products.
- 2. Do I need to uninstall ArcGIS Pro before installing the 1.1 release if I had a beta or prerelease version previously installed?**
  - It is not required, but is recommended so that ArcGIS Pro will reside in the same root folder with other ArcGIS for Desktop (10.3) applications. ArcGIS Pro will function normally in either case.
- 3. Is the ArcGIS Pro setup available for localized environments?**
  - ArcGIS Pro supports Chinese, Czech, French, German, Hebrew, Japanese, Korean, Portuguese, Russian, Spanish, Swedish, and Turkish.

The background features a vibrant blue gradient. On the left side, there are several overlapping geometric shapes: a large purple triangle pointing upwards, a yellow triangle pointing downwards, and a dark purple triangle pointing downwards. The yellow triangle contains a faint, light-colored map of a region, possibly a state or county. The overall composition is modern and abstract.

**Questions?**



Understanding our world.