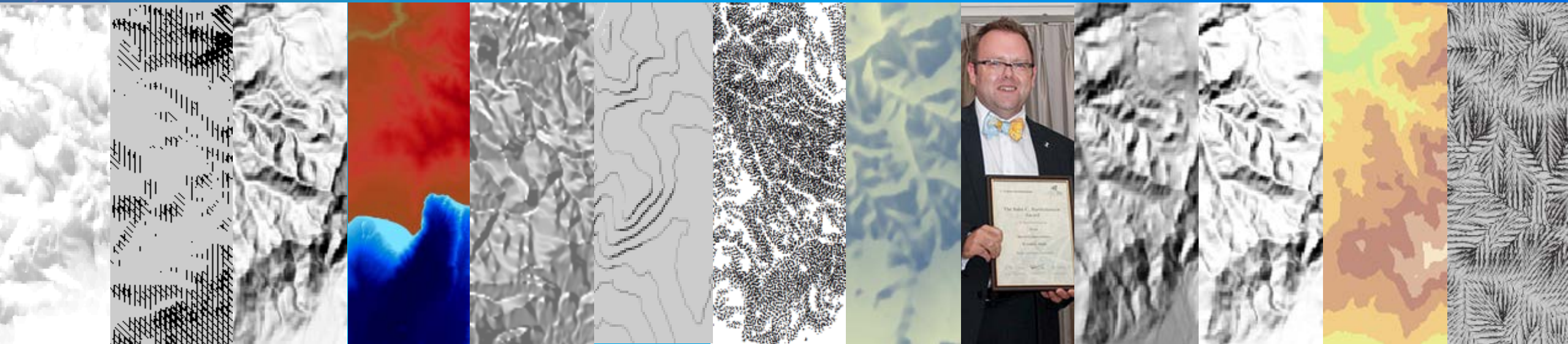


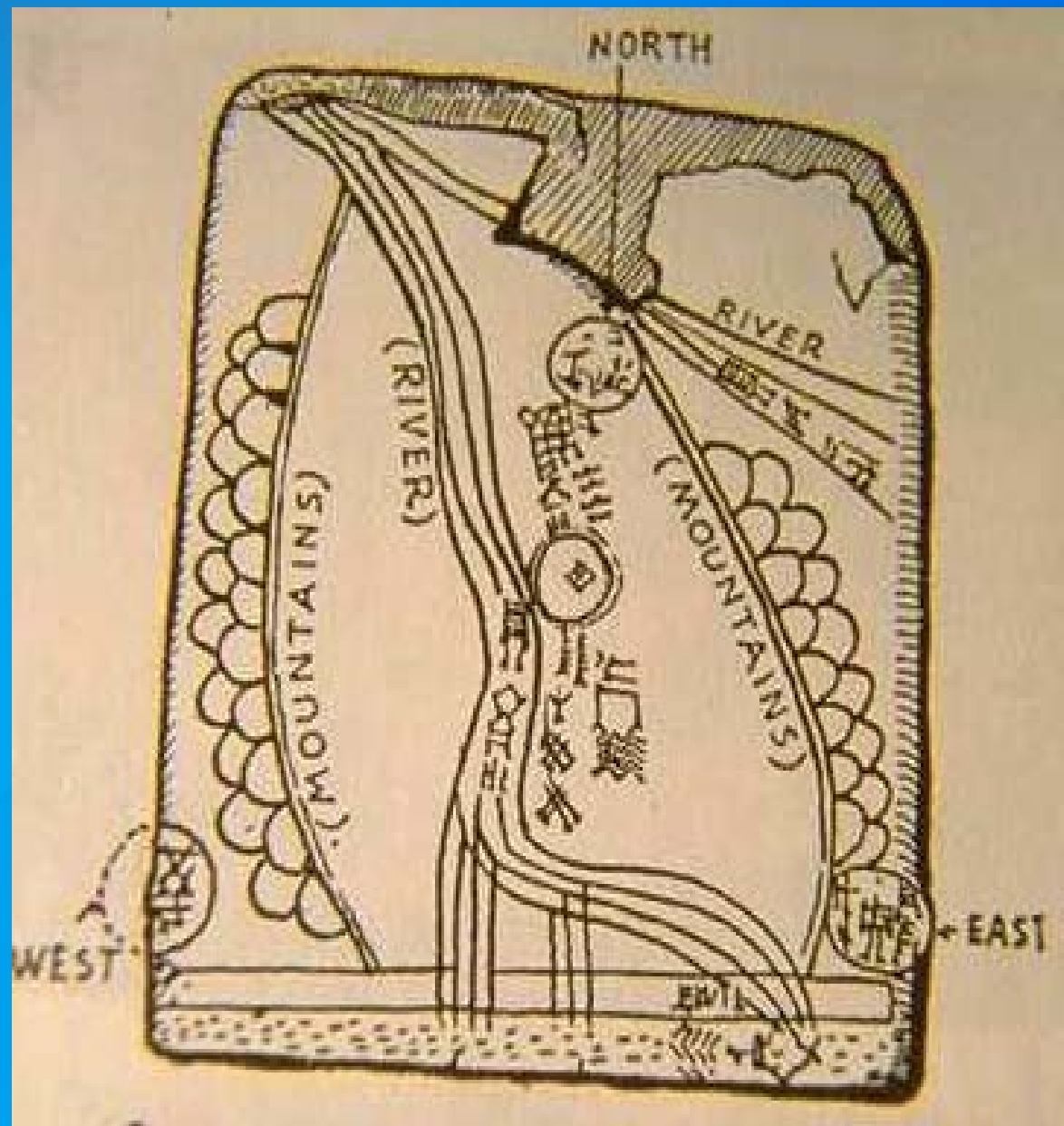
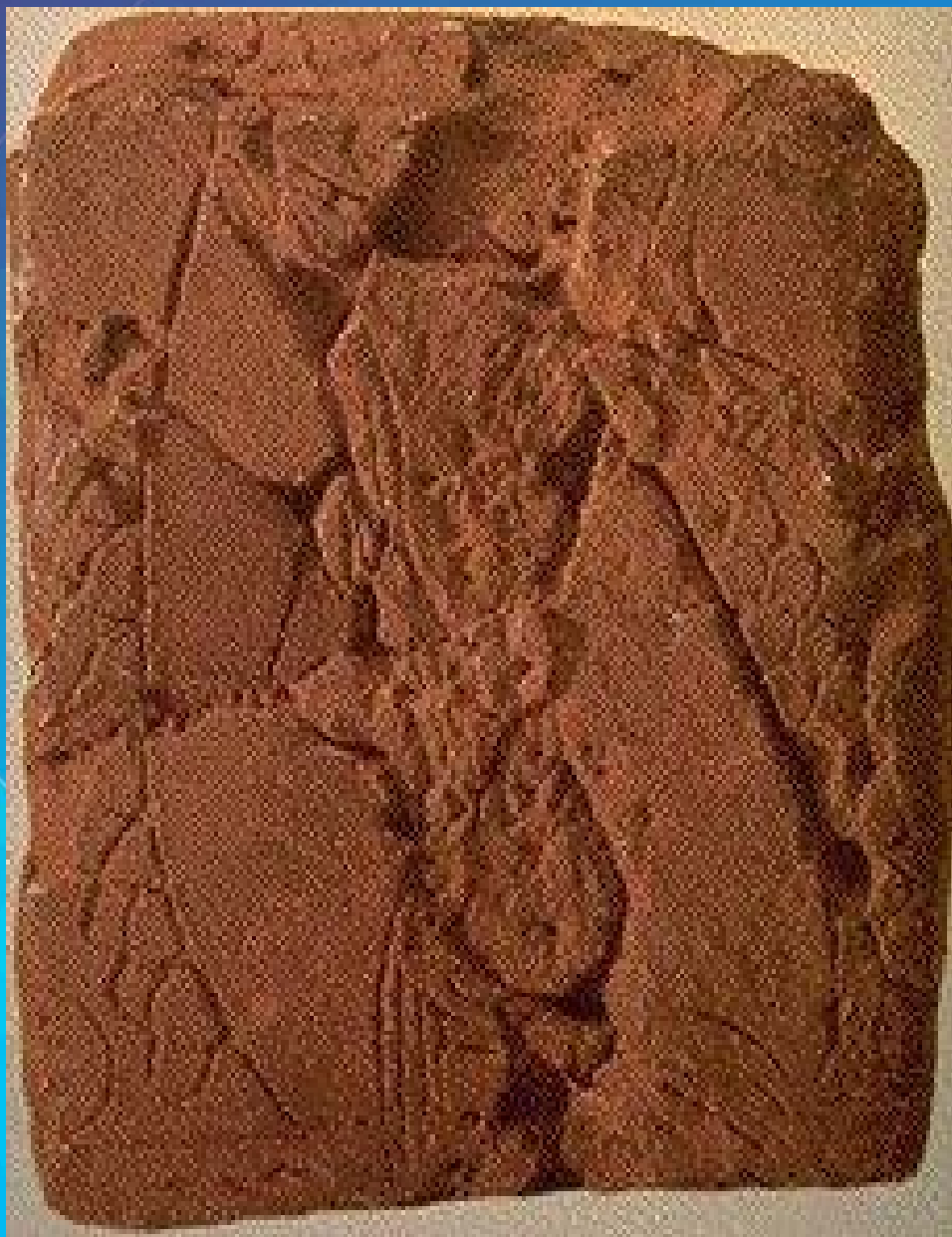


# BEAUTIFUL TERRAIN MAPPING

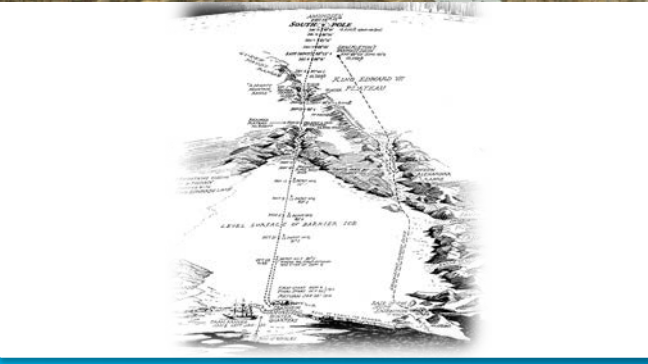
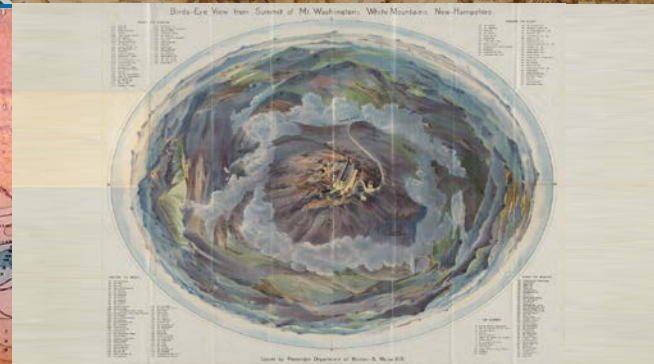
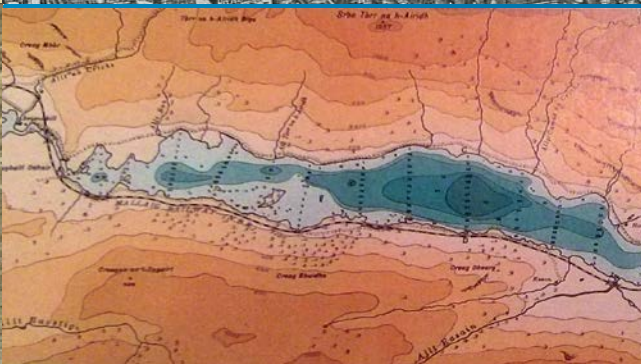
Kenneth Field

**Dr Kenneth Field**  
(@kennethfield)

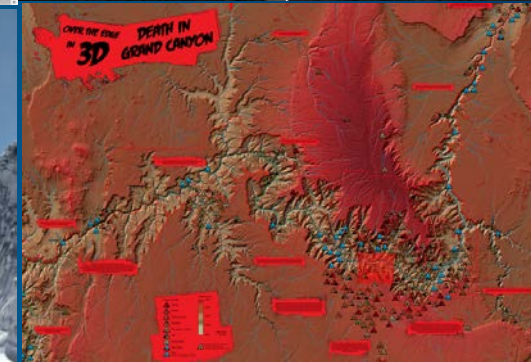
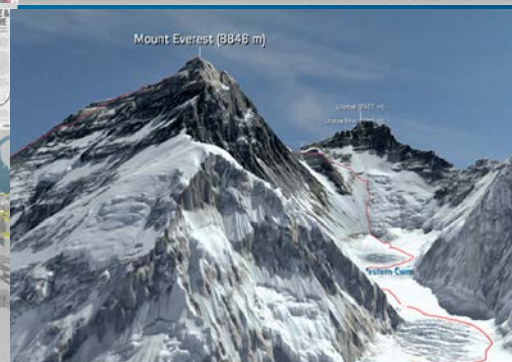
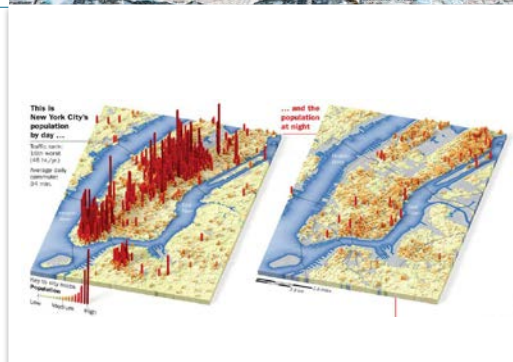
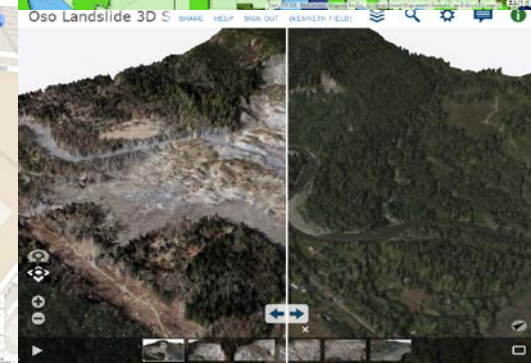
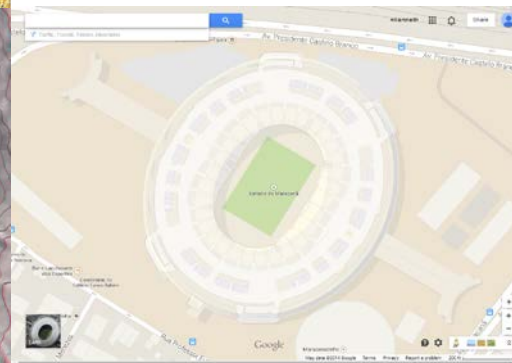
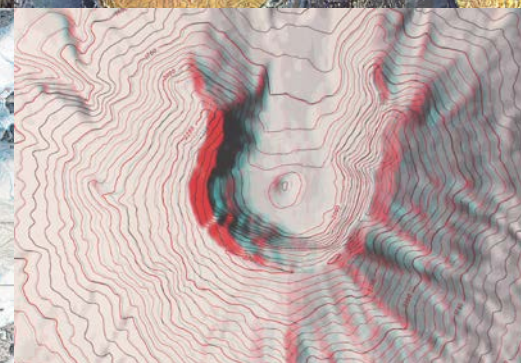
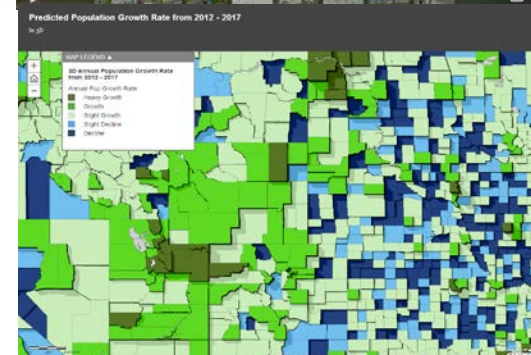
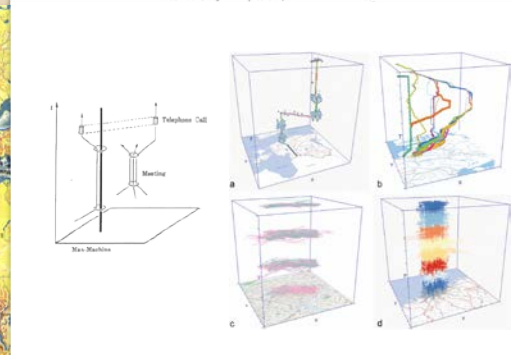










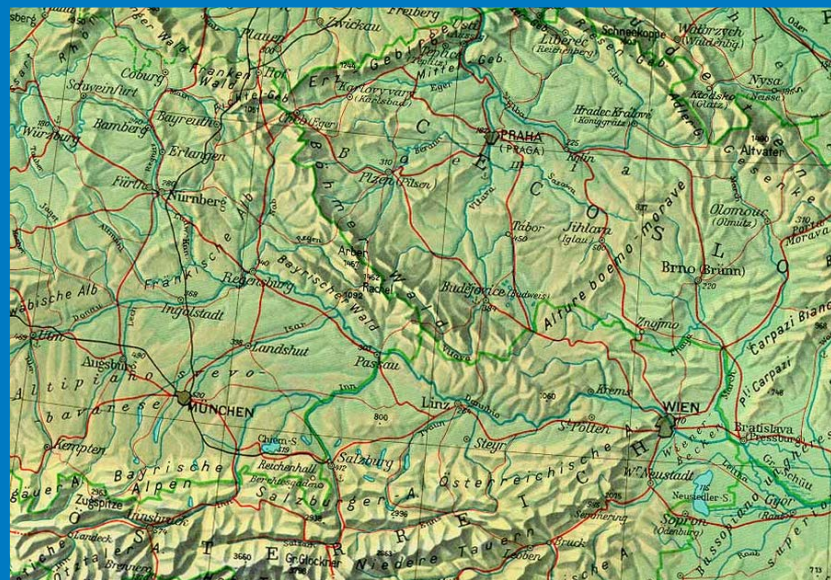
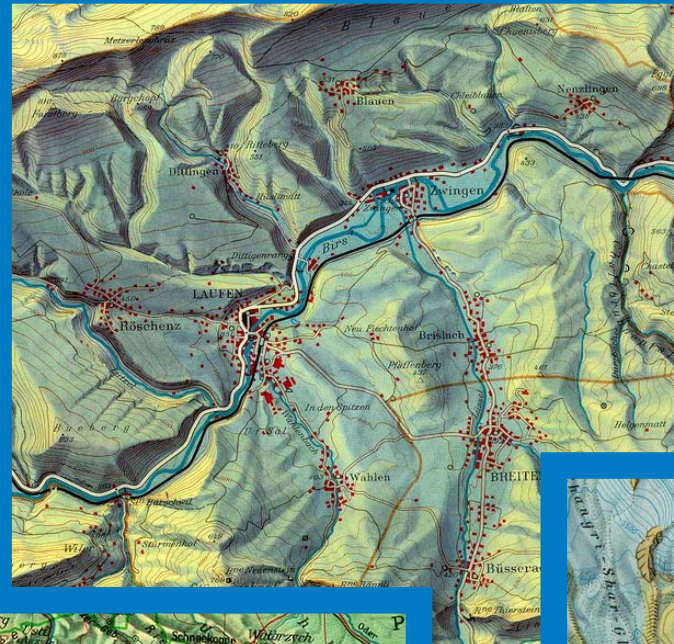








# Eduard Imhof Cartographic Relief Presentation











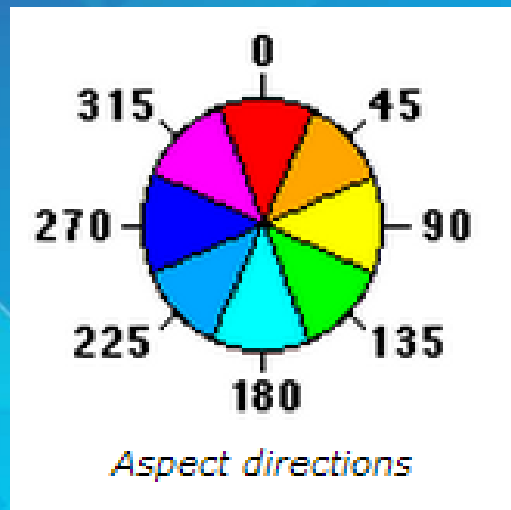


# Terrain Tools v1.0

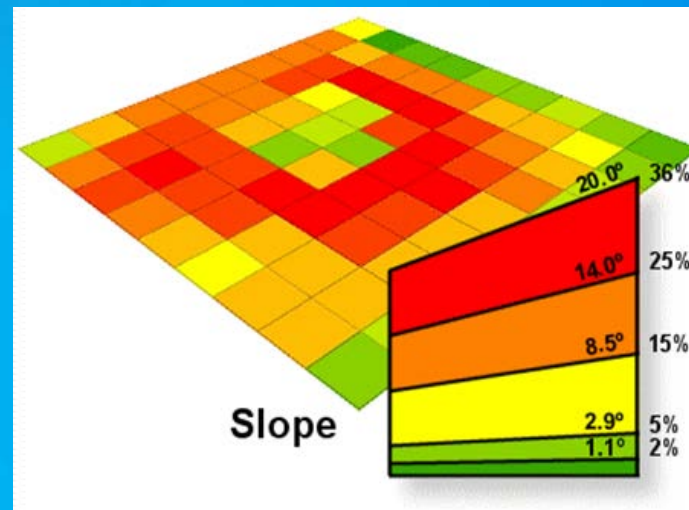
<http://arcg.is/1dHOcNj>



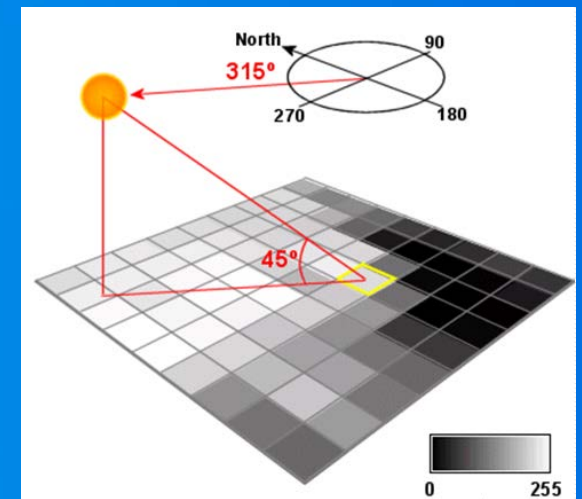
# Aspect



# Slope



# Hillshade







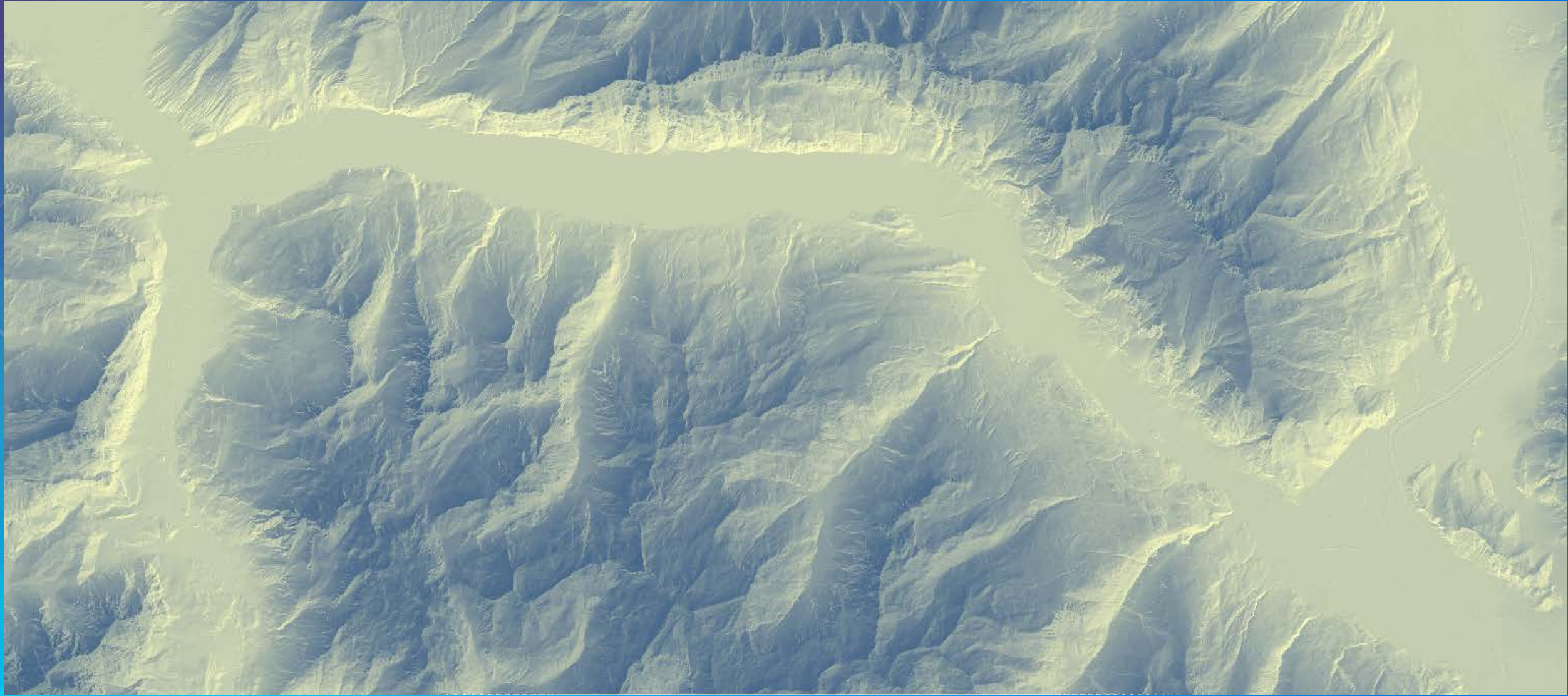
# Demo

Let's make the following...(and more)



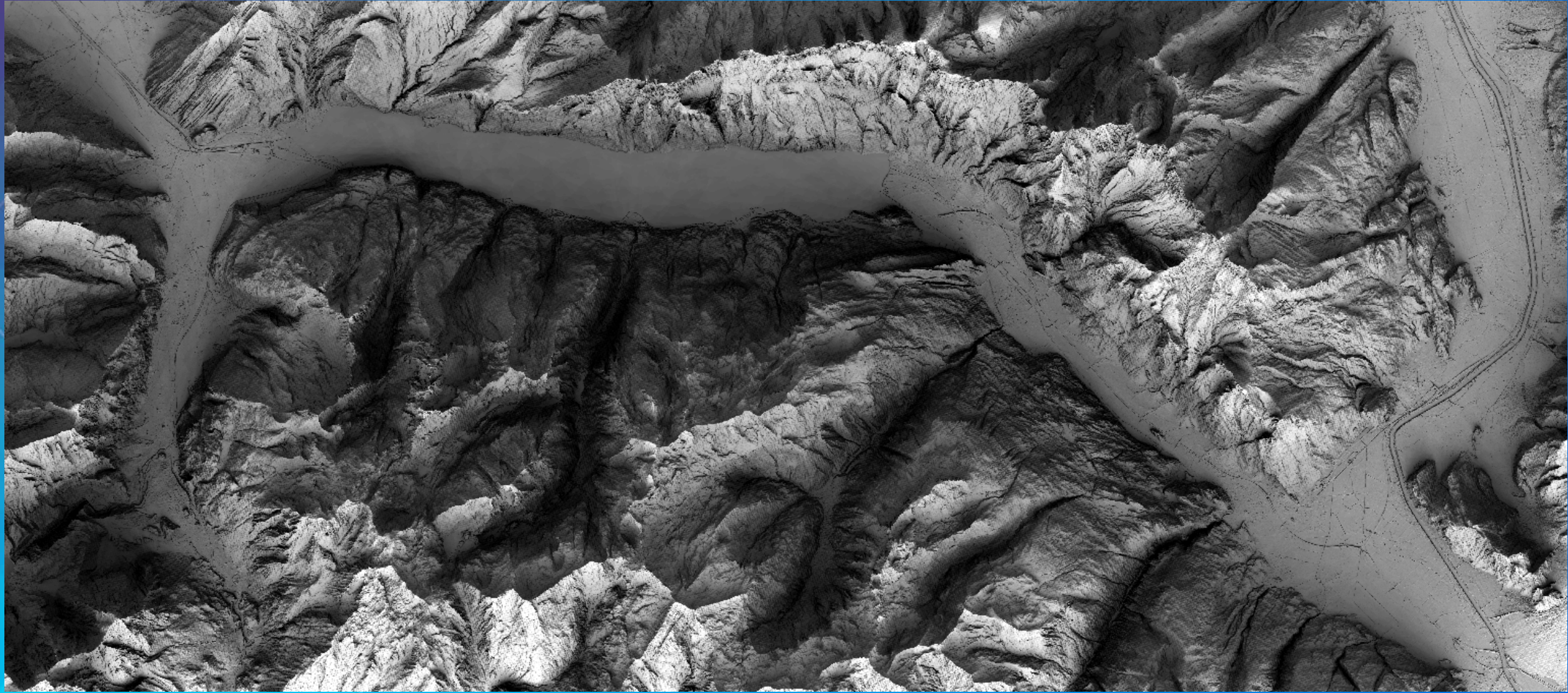


# Swiss hillshade





## Sky modelled hillshade (turbid conditions)



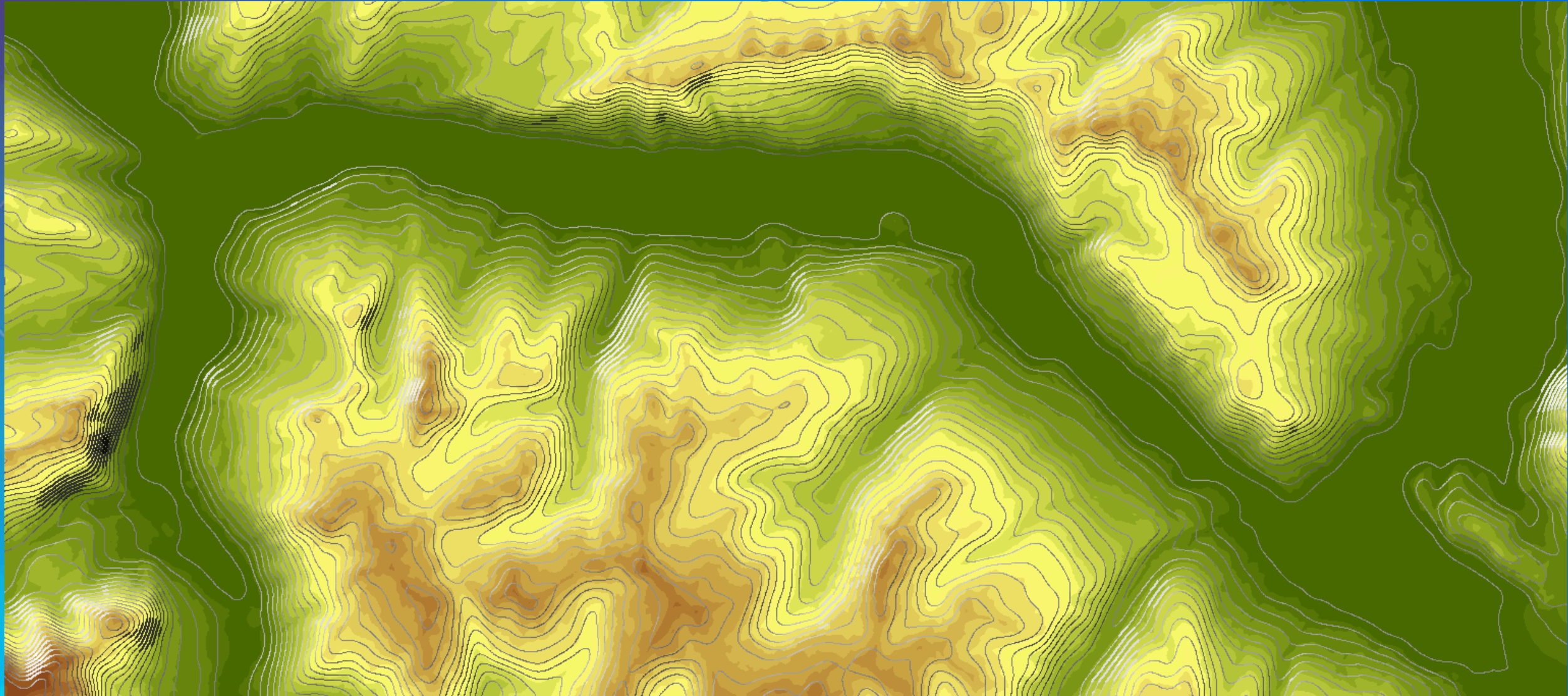


## Sky modelled hillshade (overcast conditions)



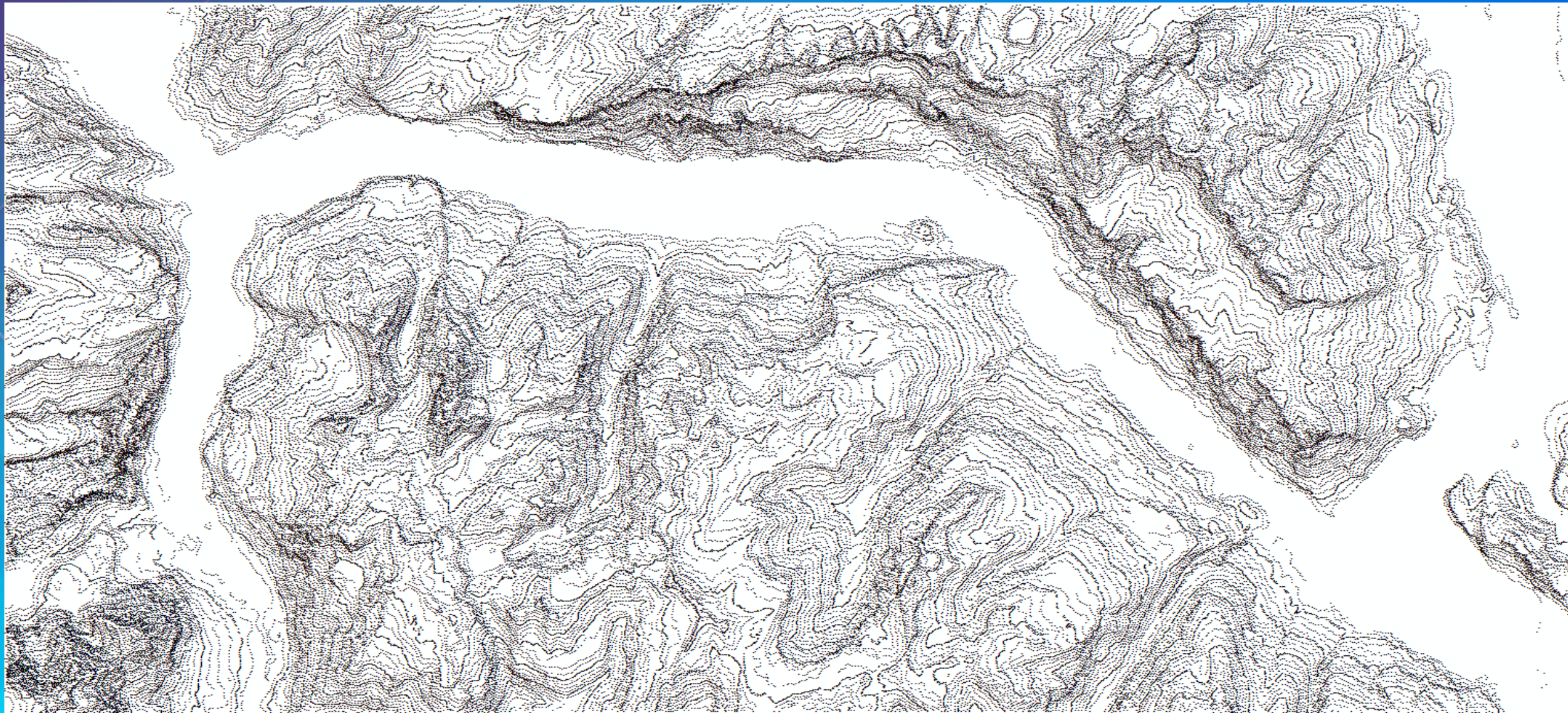


## Hypsometric tints and illuminated contours



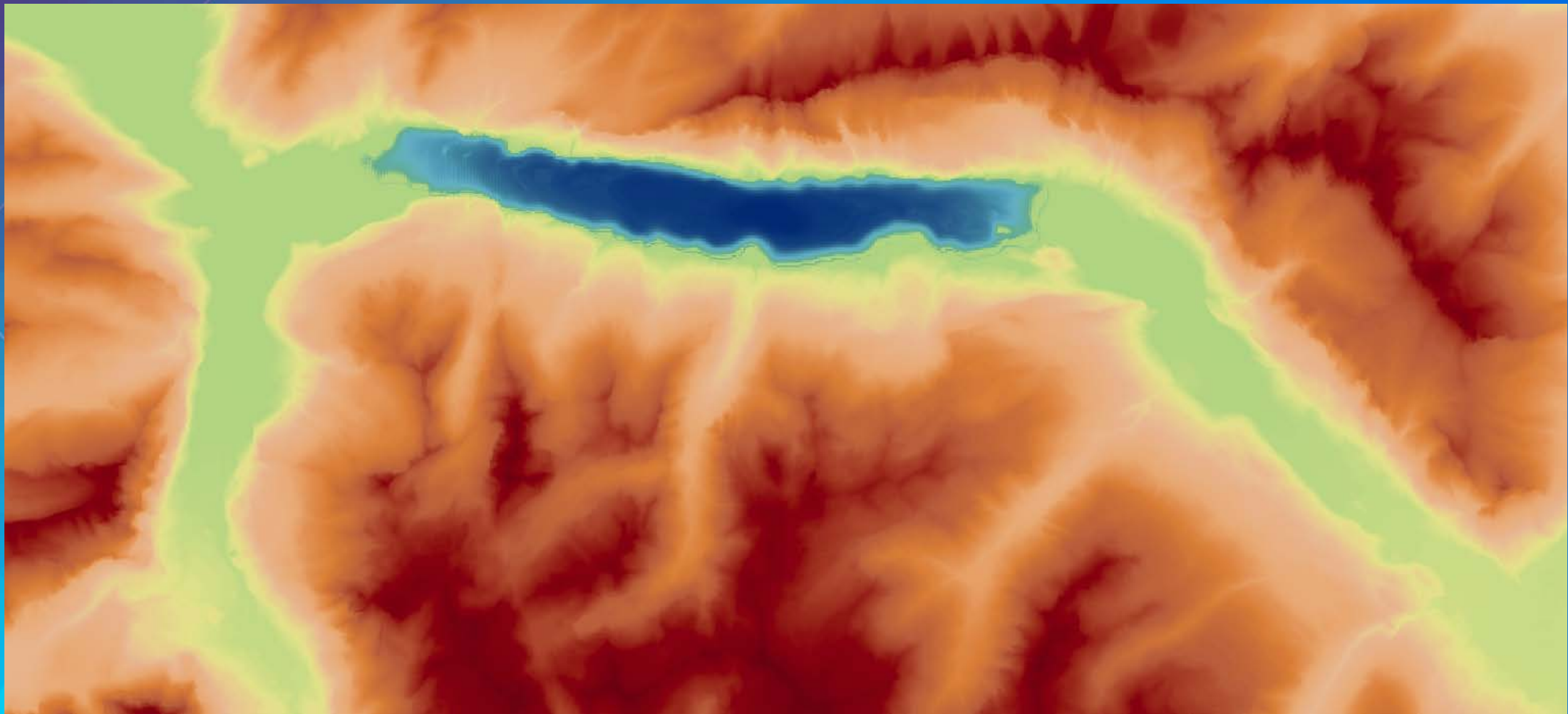


## Historic dots





# Chromastereoscopic 3D







## Pseudo-natural painted landscape





## Bathymetric and illuminated contours





# One more thing

Actually...a few more things

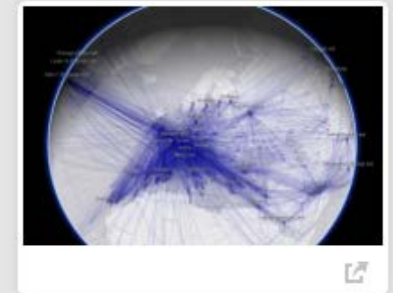
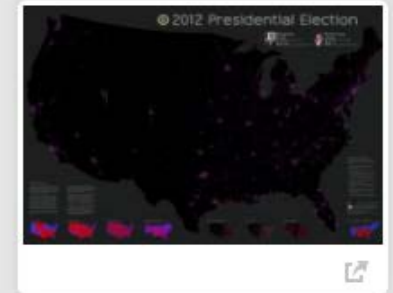


[carto.maps.arcgis.com](http://carto.maps.arcgis.com)

## Compelling Cartography

Map Gallery to showcase examples of high quality map design in an online environment

Search maps





# **“Cartography”** (forthcoming)

**By Kenneth Field and Damien Saunder**



# Other sessions

**Best Practices in Map Design**

**Full throttle Mapping**

**Mapping Statistical Data**

**3D Cartographic Techniques**

**Creating Beautiful Terrain Maps**



# Thank you...

- Please fill out the session survey:

**First Offering ID: 1347 (EdUC)**

**Second Offering ID: 1479 (UC)**

kfield@esri.com



@kennethfield





Understanding our world.