



# Getting the most out of ArcMap

Jack Horton

&

Jorge Ruiz-Valdepeña

# Agenda

- **Demo 1**
  - **Map navigation shortcuts**
  - **Working with map layers**
- **Demo 2**
  - **Repairing layer data sources**
  - **Using Maplex for labeling**
  - **Managing bookmarks and scales**
- **Demo 3**
  - **Map layouts and map books**
- **Demo 4**
  - **An overview of ArcMap windows**

# Demo 1

- **Map navigation shortcuts**
  - Use the mouse wheel
  - Magnifier window
  - Reference scale
- **Working with map layers**
  - Customizing symbology
  - Using transparency to make beautiful maps
  - Controlling the scale of map displays



## Demo 2

- **Repairing layer data sources**
  - Fixing a single layer
  - Fixing multiple layers at the same time
- **Using Maplex for labeling**
  - Placing labels
  - Label expressions
  - SQL queries
- **Managing bookmarks and scales**
  - Bookmarks remember where you've been
  - Controlling the map scale

# Demo 3

## Map books

Automatically laying out your pages

Using page numbers and page names

Tracking the current page on an overview map



# Demo 4

An overview of ArcMap windows

Results window

Python window

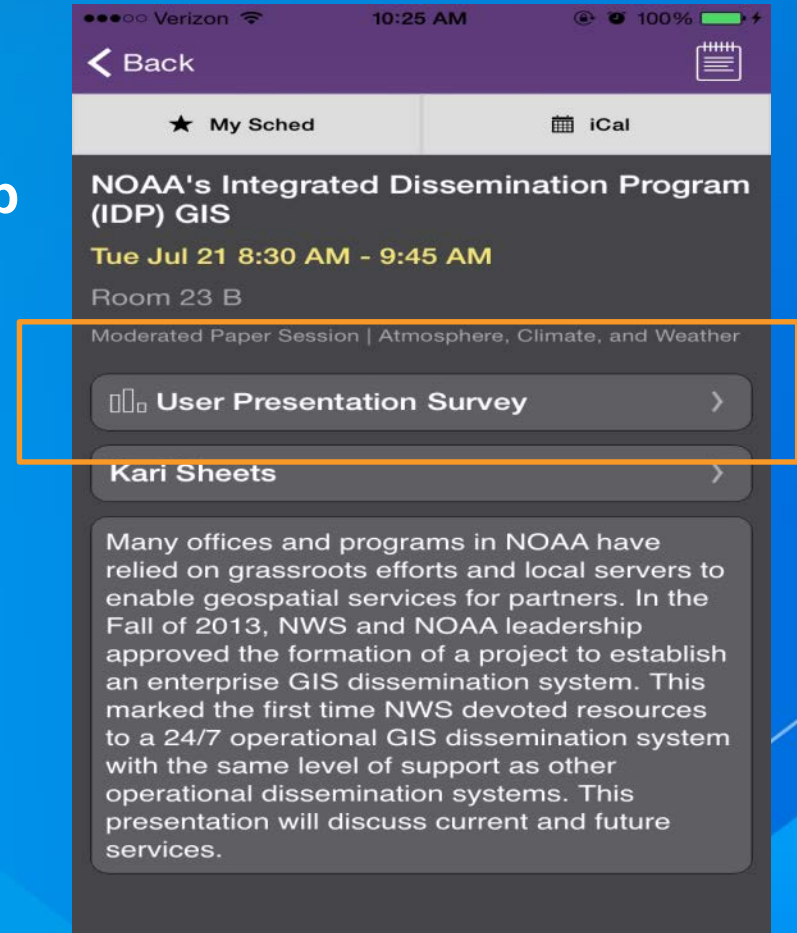
Image analysis window



# Thank you...

<http://www.esri.com/library/brochures/pdfs/arcgis-desktop-tips.pdf>

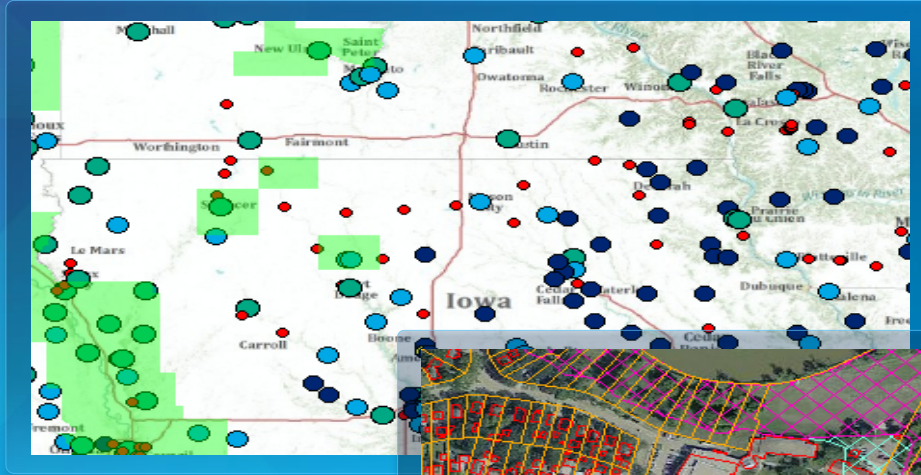
- Please fill out the session survey in your mobile app
- Select “Getting the most out of ArcMap” in the Mobile App
  - Use the Search Feature to quickly find this title
- Click “User Presentation Survey”
- Answer a few short questions and enter any comments





Understanding our world.

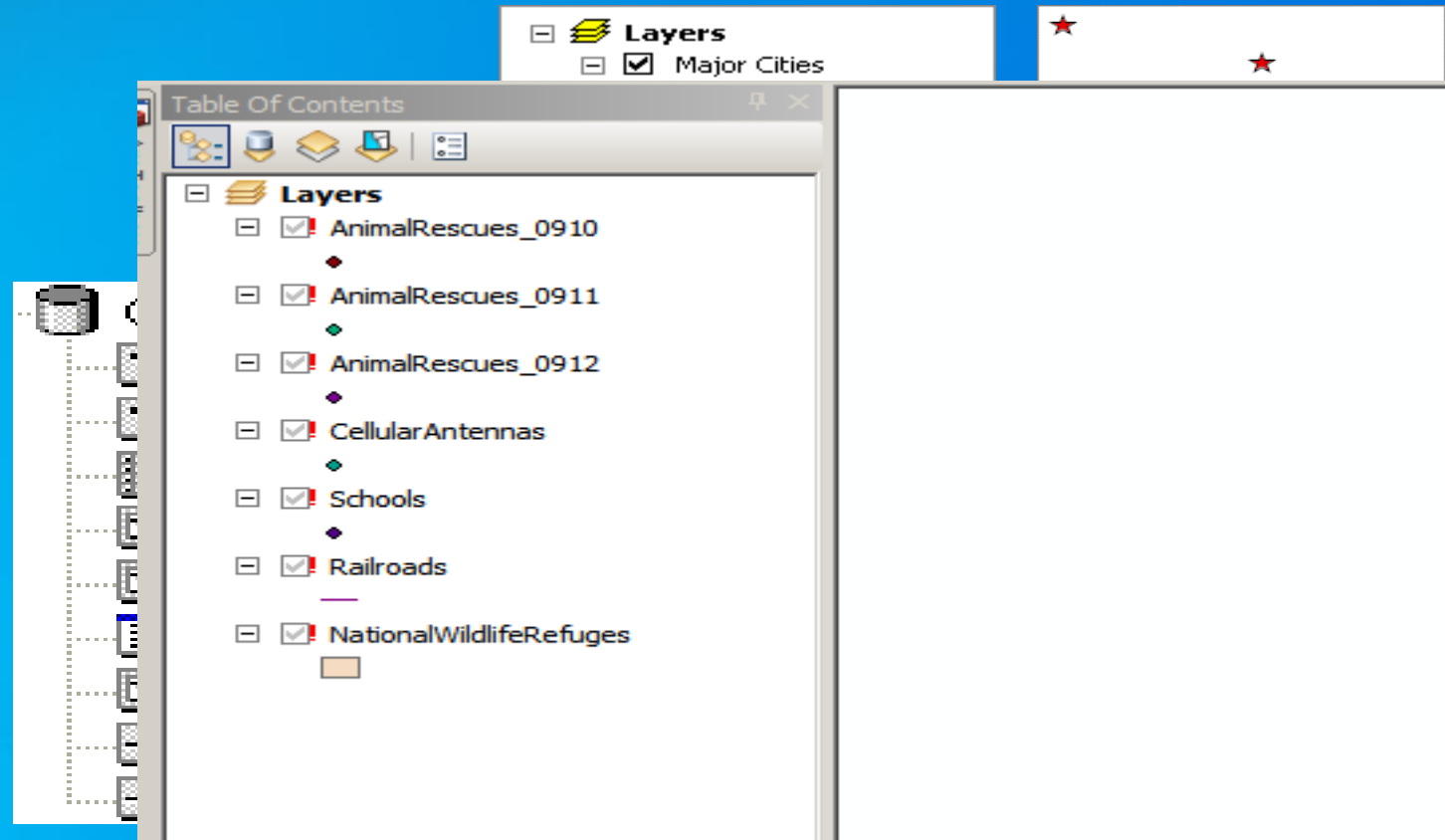




# Working with Data Sources

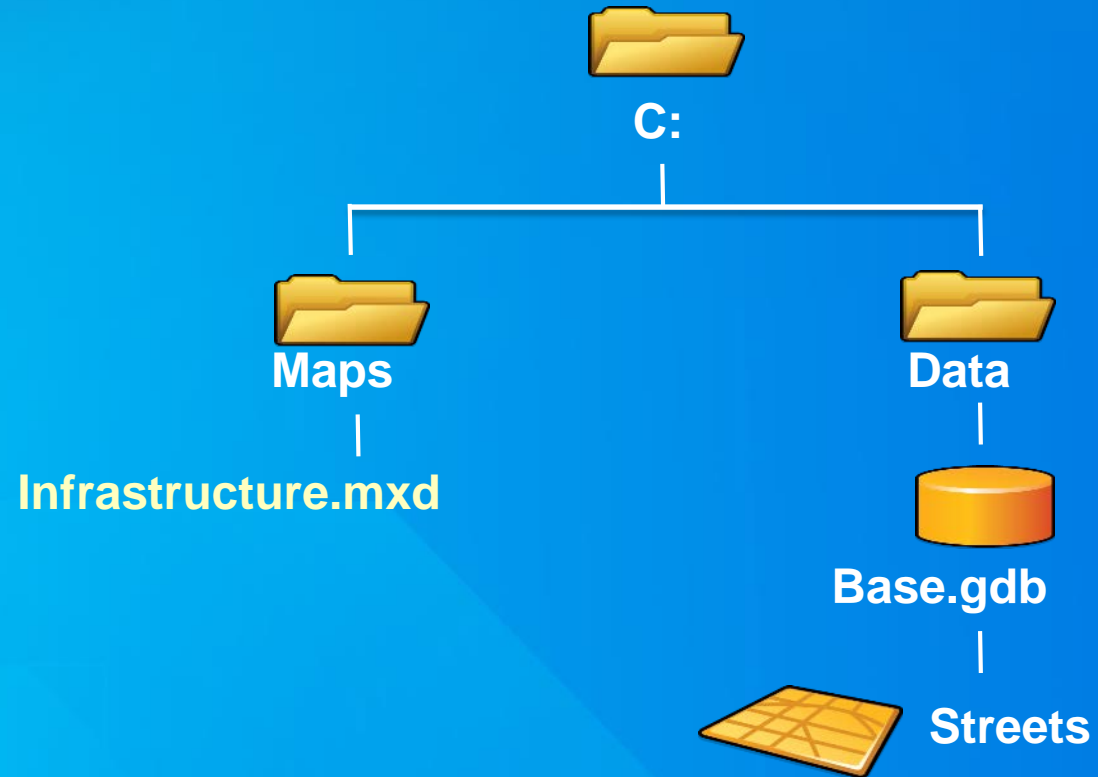
# ArcMap Layers

- A layer points to data on disk
  - Defines the name, appearance, and other properties of the data
  - Will not draw in ArcMap if path to data changes

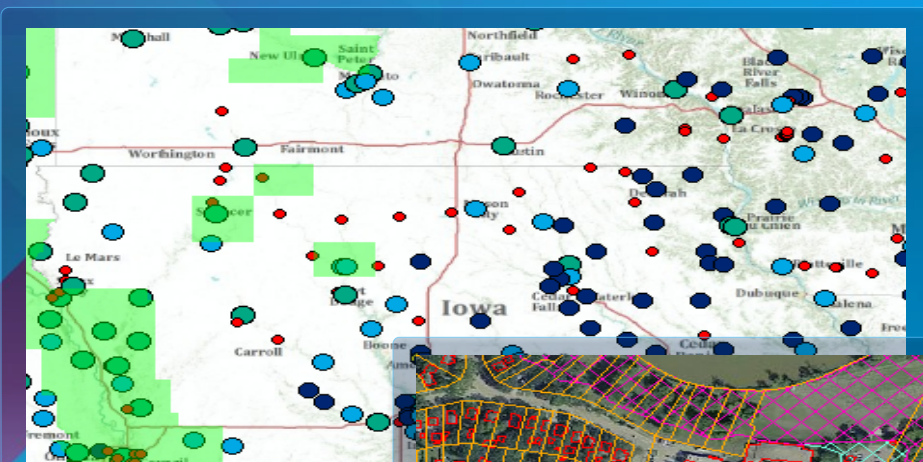


# Summary: Relative paths in ArcMap

- Layer source data stored relative to the MXD
  - Instead of absolute path: C:\Data\Base.gdb\Streets **Relative path**  
**..\..\Data\Base.gdb\Streets**
  - Cannot span disk drives



# Using MAPLEX for Labeling



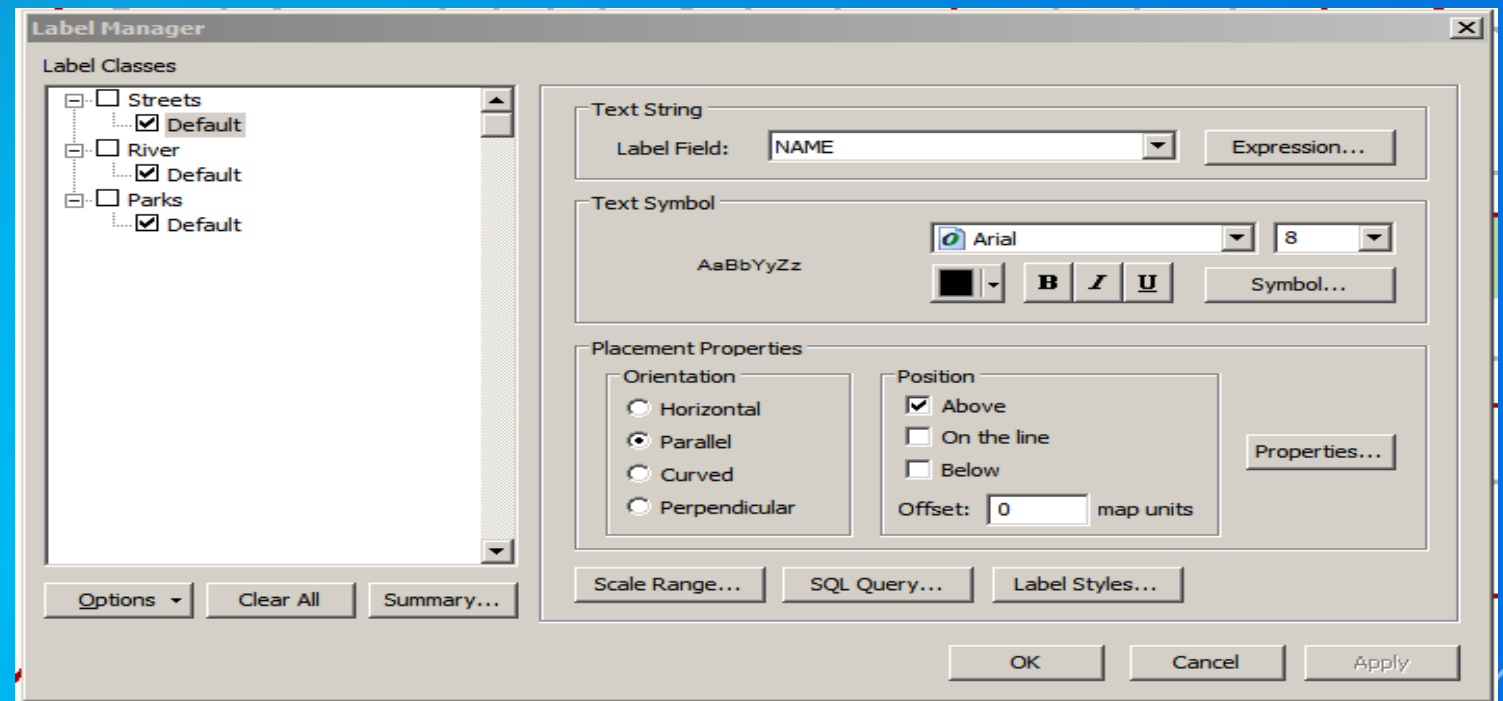
# Label with Maplex

- Labeling Toolbar

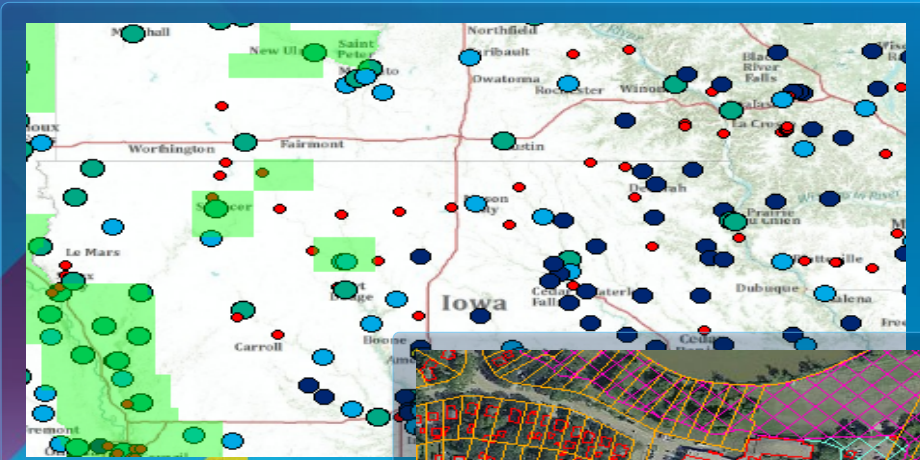


- Label Maplex Engine

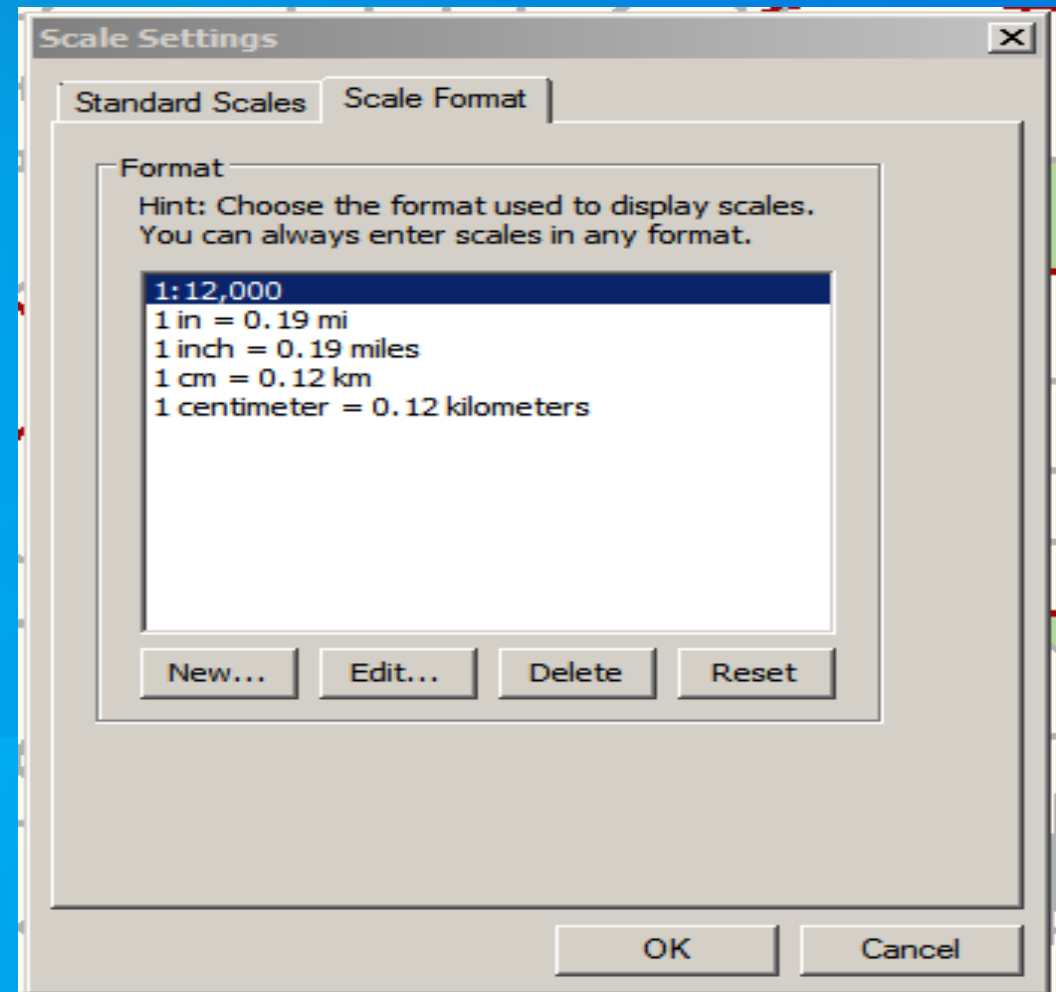
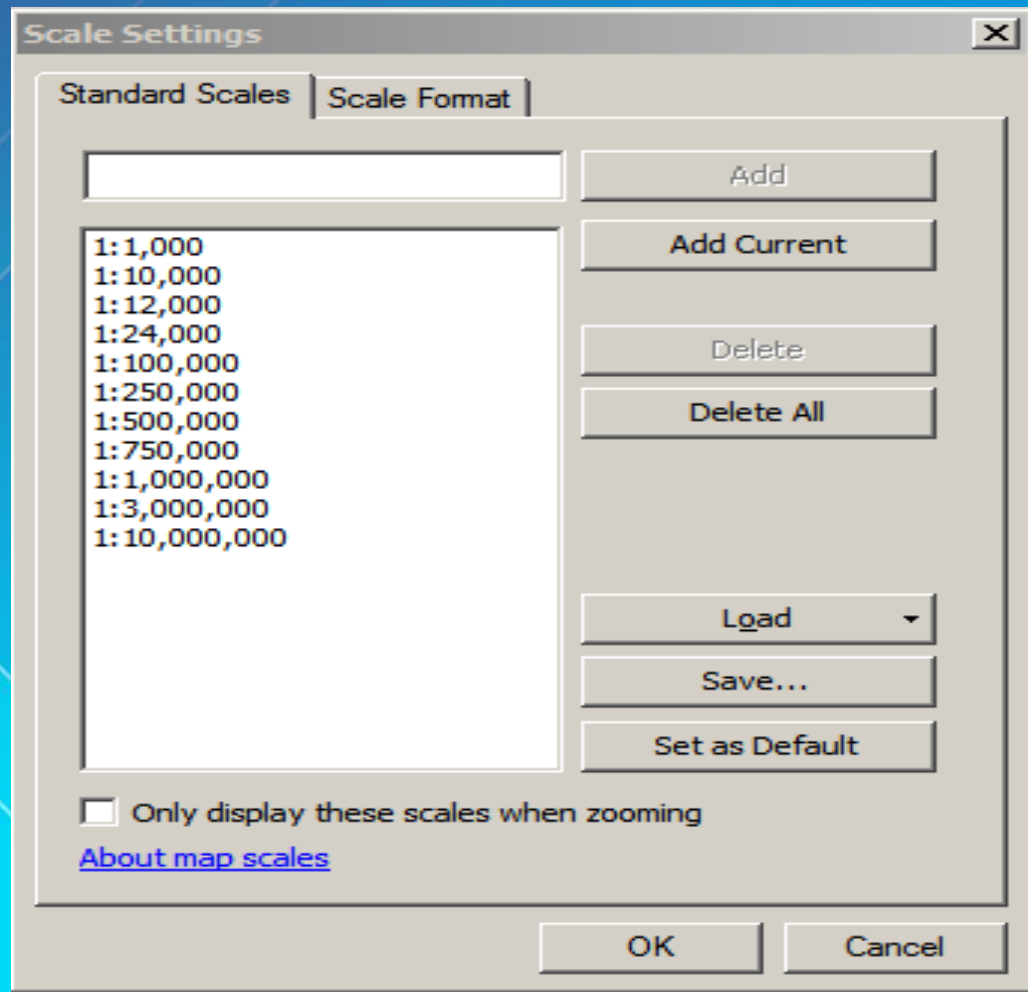
- Label manager Dialog Box



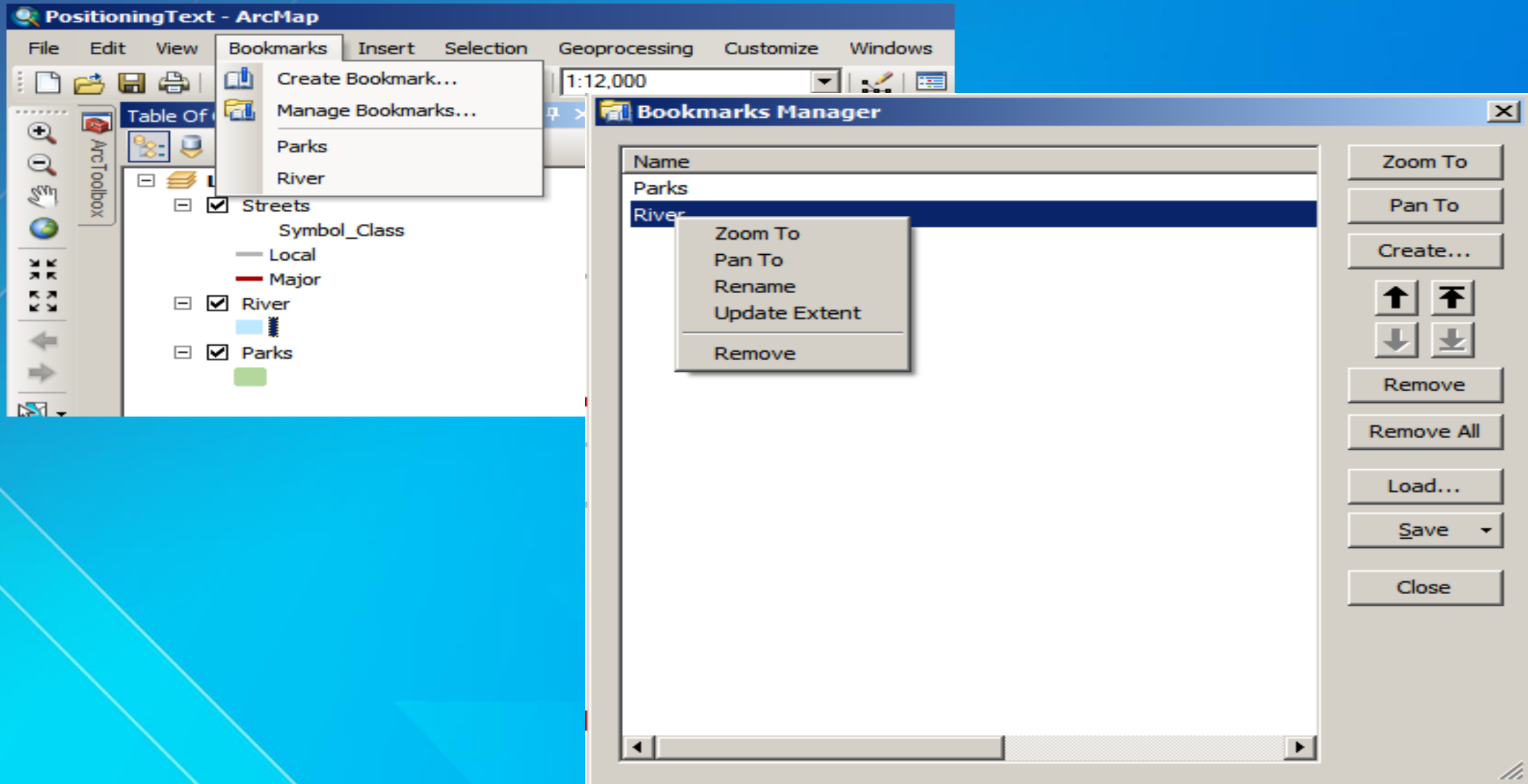
# Managing Bookmarks and Scales



# Working with Scales

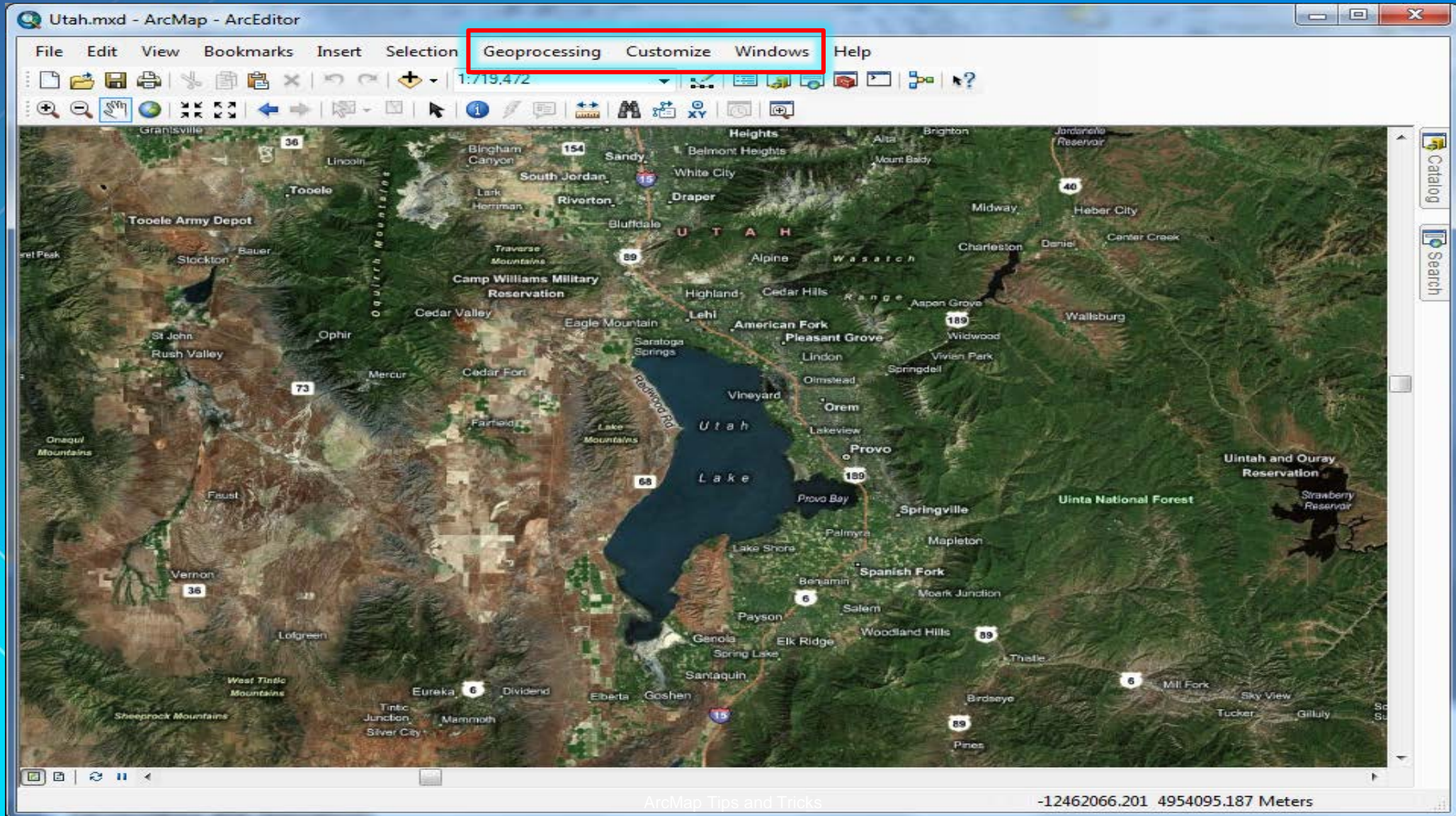


# Working Bookmarks





# An Overview of ArcMap Windows





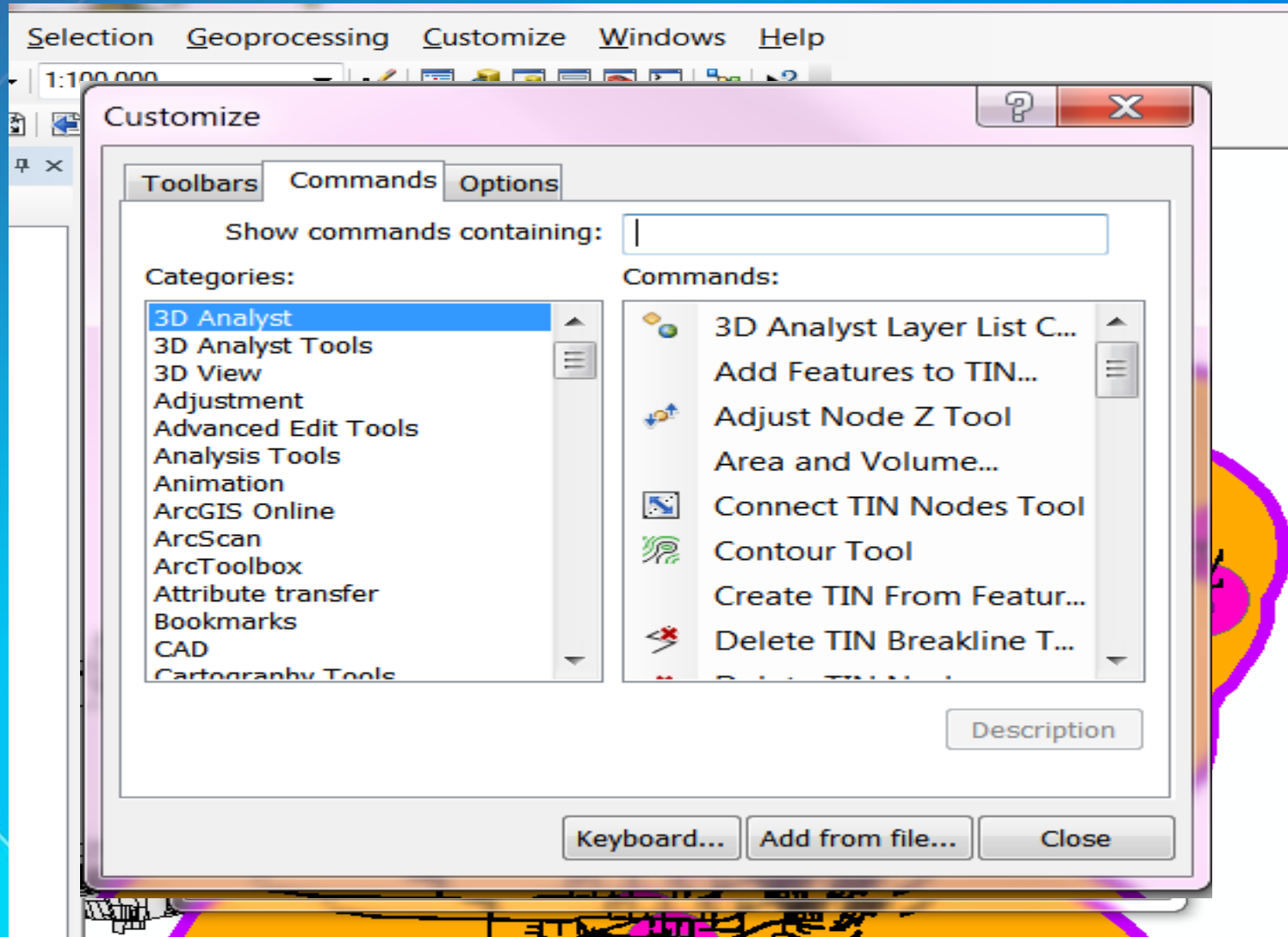
# Customize Window

# Configurable Desktop



No Code

# Configurable Desktop





# Geoprocessing Window

# Geoprocessing

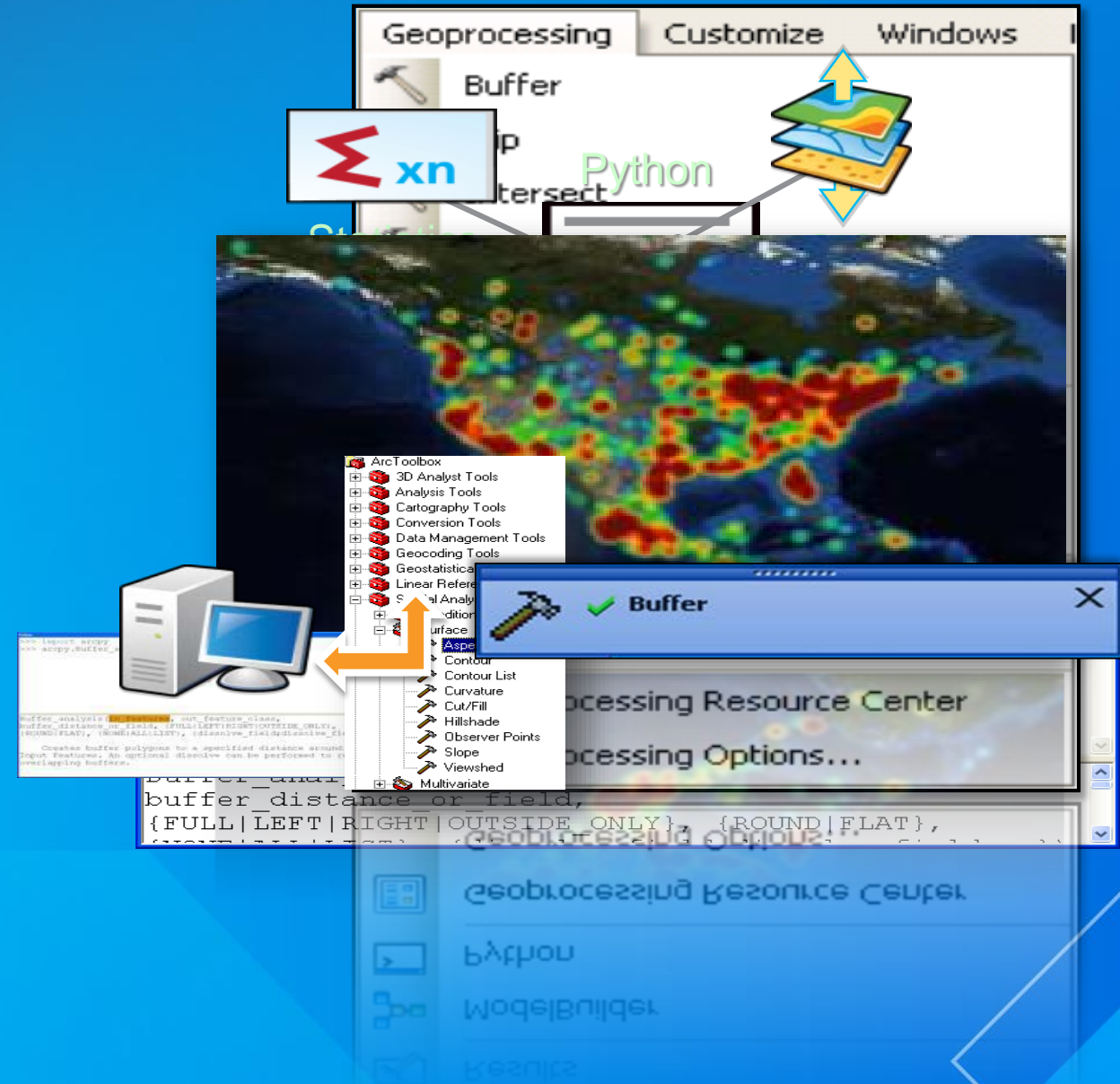
- Quick access to the Tools you need

- Customizable Menu
- Search

- Python is the way automate your work

- More efficient processing

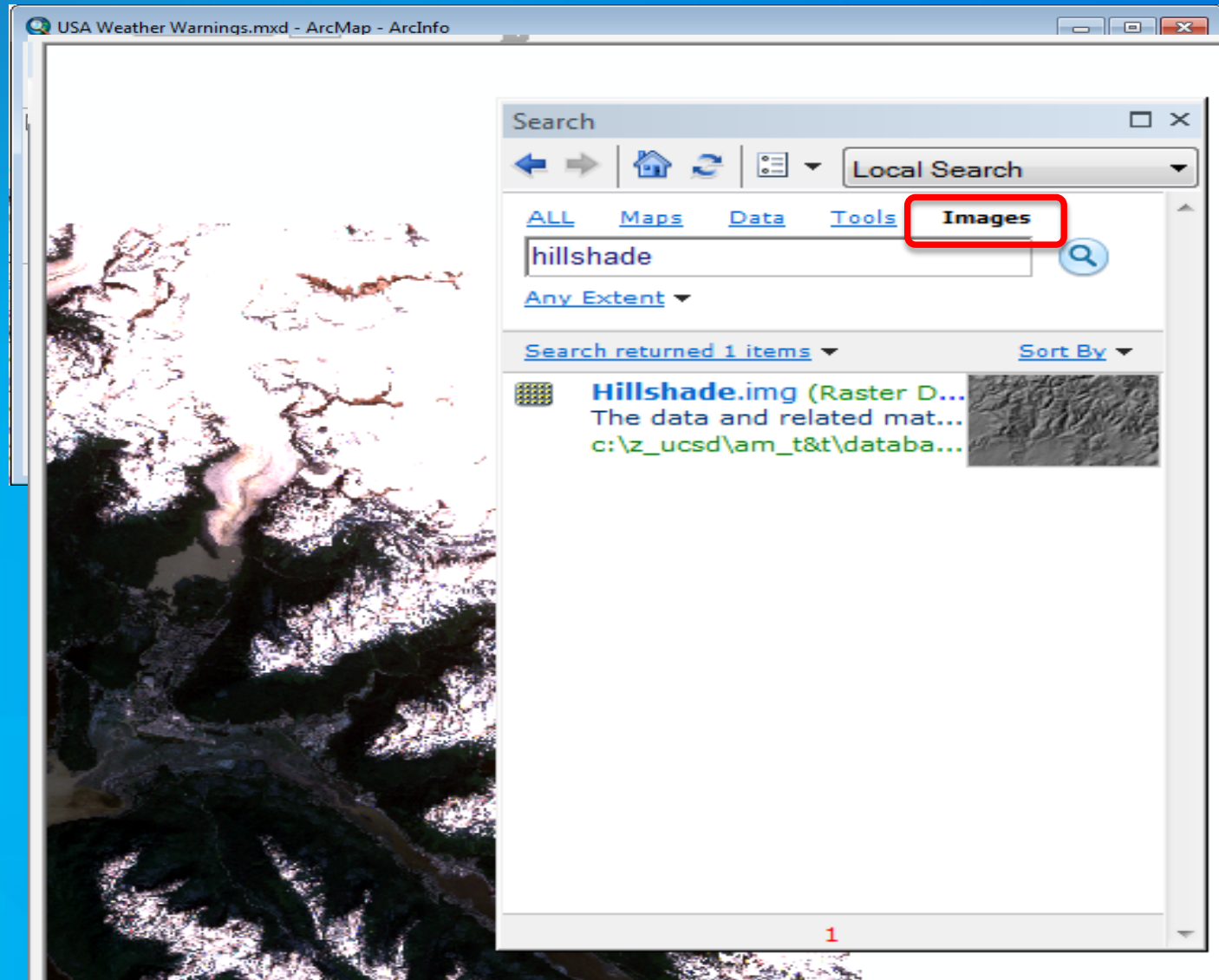
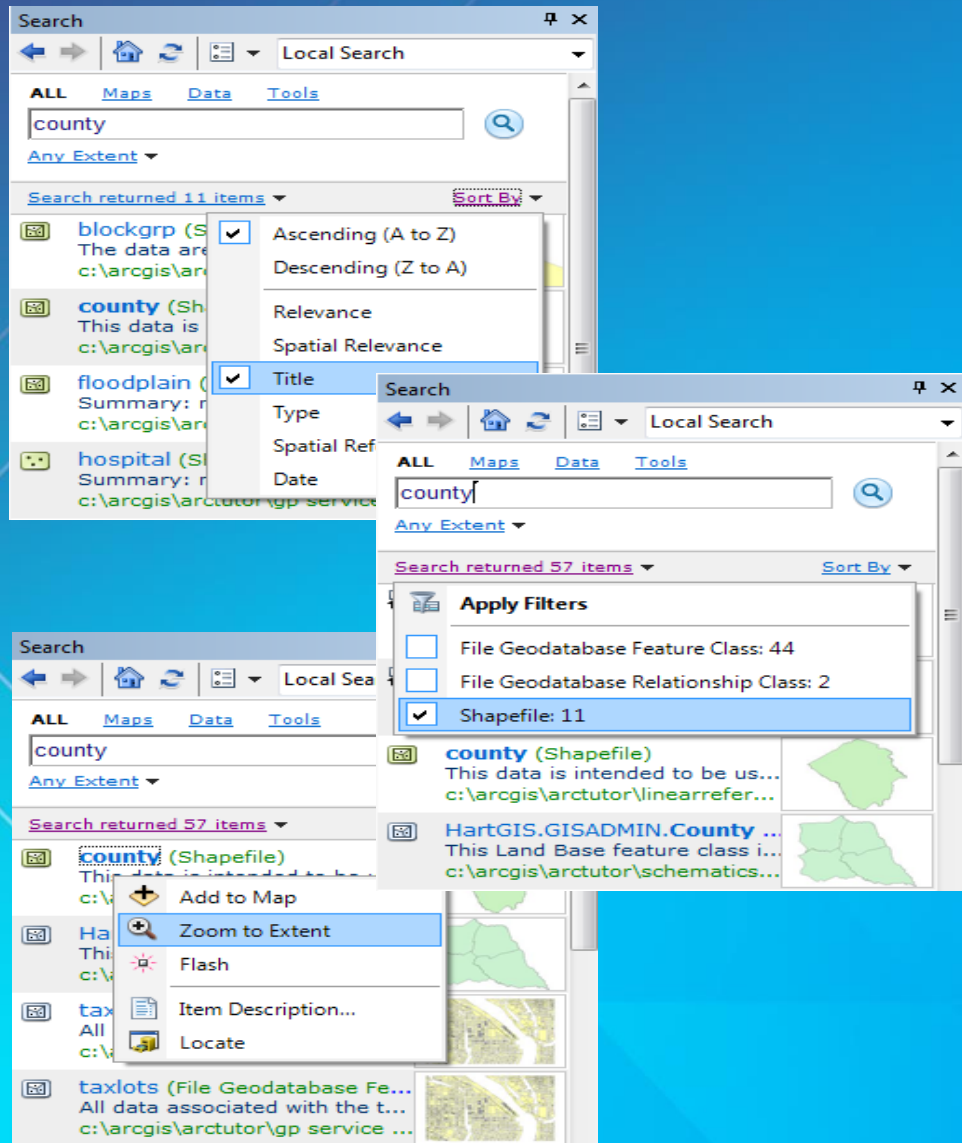
- Up to 15x faster
- **Background execution**





# Search Window

# New in Search at 10.2







# Python Window

# Python Window

The image shows a screenshot of the Python Window in ArcGIS. The window is titled "Python" and contains a primary prompt (">>>>") and a help and syntax window. The help and syntax window displays the following text:

```
F1 show help for current cursor location.  
F2 check the syntax of the current line (or code block if in multiple line mode).  
Shift or Control Return will enter multiple line mode. To exit multiple line mode (execute the code block) enter Return on the last line.  
Access the history of commands
```

The main Python window displays the following code:

```
>>> arcpy.env.workspace = r'C:\DemoData\ARC1\WilsonPolice.gdb'  
>>> arcpy.Buffer_analysis(|
```

A dropdown menu is visible below the code, listing the following options:

- ◆ "Basins"
- ◆ "County"
- ◆ "Gauges"
- ◆ "MajorRivers"
- ◆ "Streams"
- ◆ "SubBasins"

The right side of the Python window displays the following text:

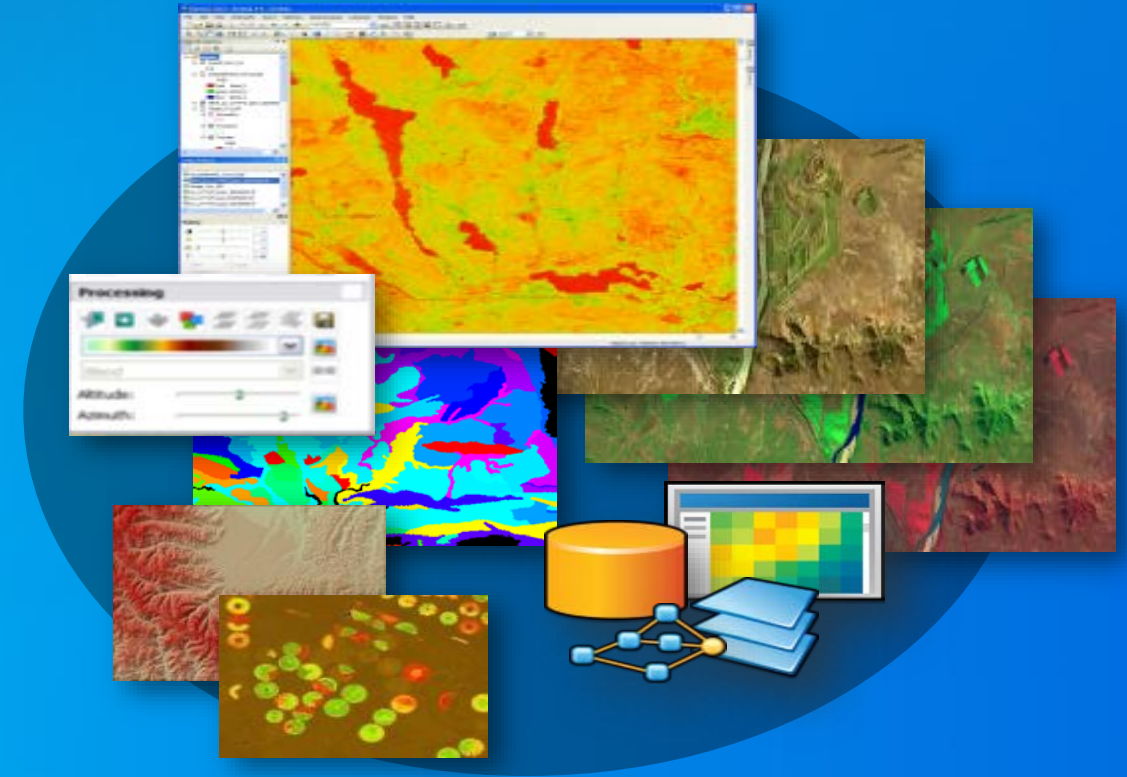
```
Buffer_analysis(in_features,  
out_feature_class,  
buffer_distance_or_field,  
{line_side}, {line_end_type},  
{dissolve_option},  
{dissolve_field;dissolve_field...}  
, {method})  
Creates buffer polygons around  
input features to a specified  
distance.
```



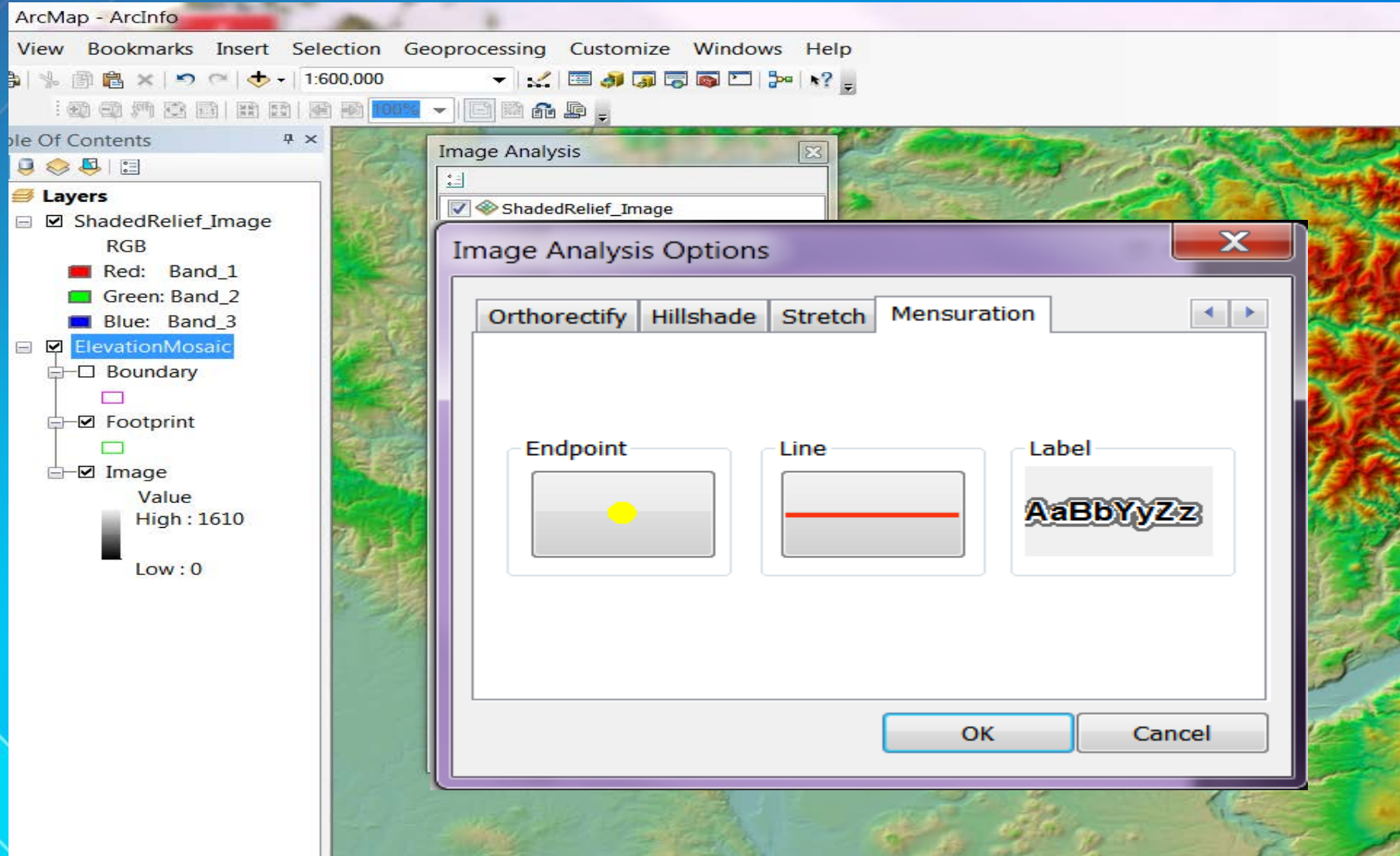
# Image Analysis Window

# Image Analysis Window

- Quick Access and Display
- Search and Discovery
- Mensuration (Height measurement)
- Temporal Query
- Image Analysis Window
  - Enhancement
  - Interpretation
  - On-The-Fly Processing
- Image Classification Tools
- Authoring for Serving



# New Tab For Image Analysis Window





**Sharing**

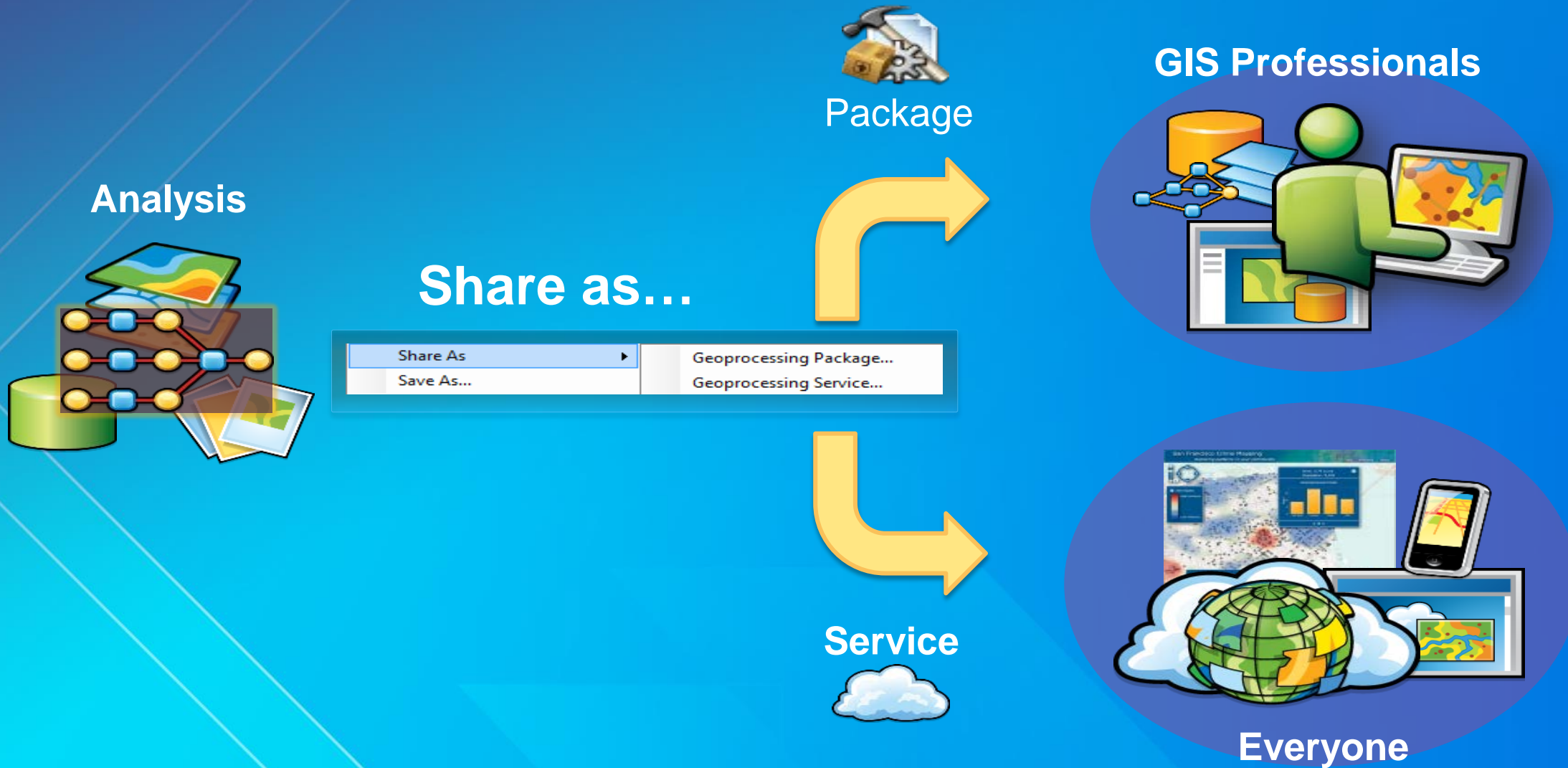
# ArcGIS Simplifies Sharing Your Work

- Maps, Data, Tools, and Models . . .



- . . . Automating the Process of Creating Services

# Sharing Analysis





# Sharing as a Package

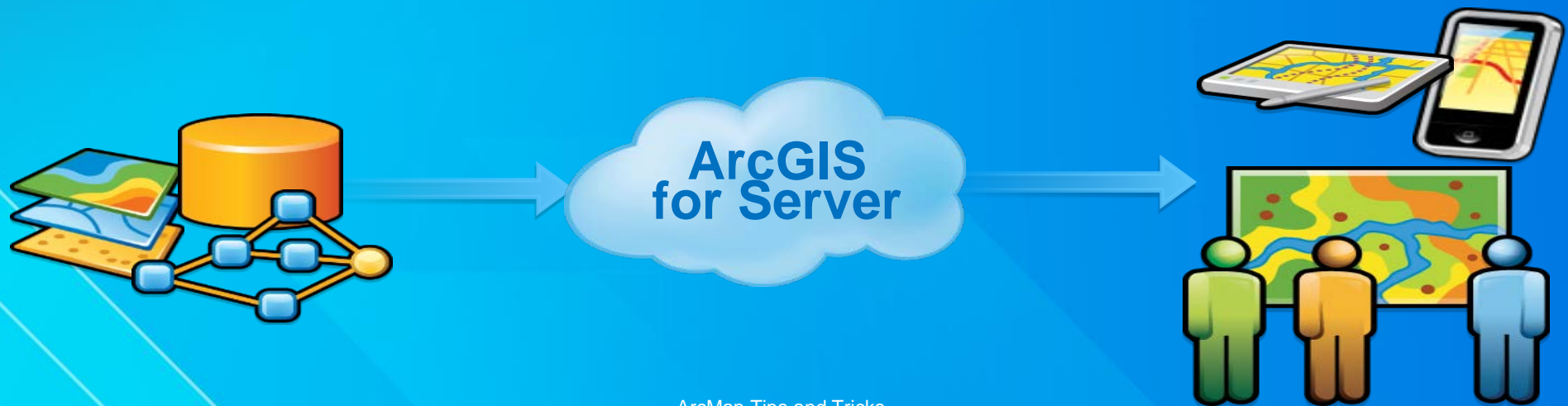
- Professional to Professional



# Sharing as Services

## Professional to Everyone

- **Make it easier to share GIS resources**
  - Unified sharing experience
  - Comprehensive Analysis
  - Sharing to servers in the cloud and to ArcGIS Online



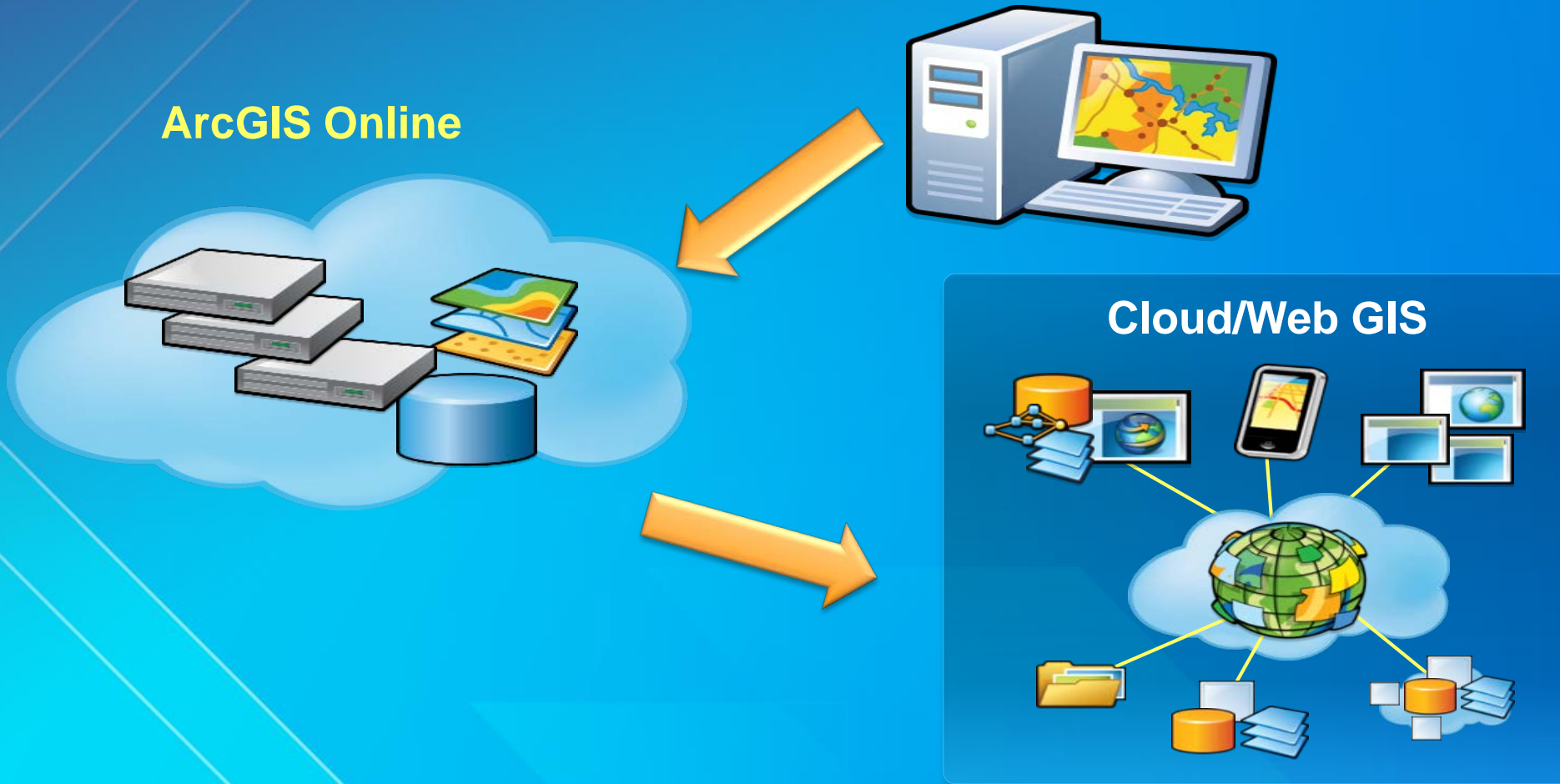
# Vision



**Bonus:**  
**What if you don't have a Server?**

# My Portal (Cloud)

## Sharing services on ArcGIS Online



# ArcGIS Online – Hosted Mapping

- **Unlock the skills and information of Desktop users**
  - **Ready to use**
  - **No server installation or administration**
  - **Access from any where**



Understanding our world.