



Tips and Tricks with Tables and Reports in ArcMap

Jack Horton

&

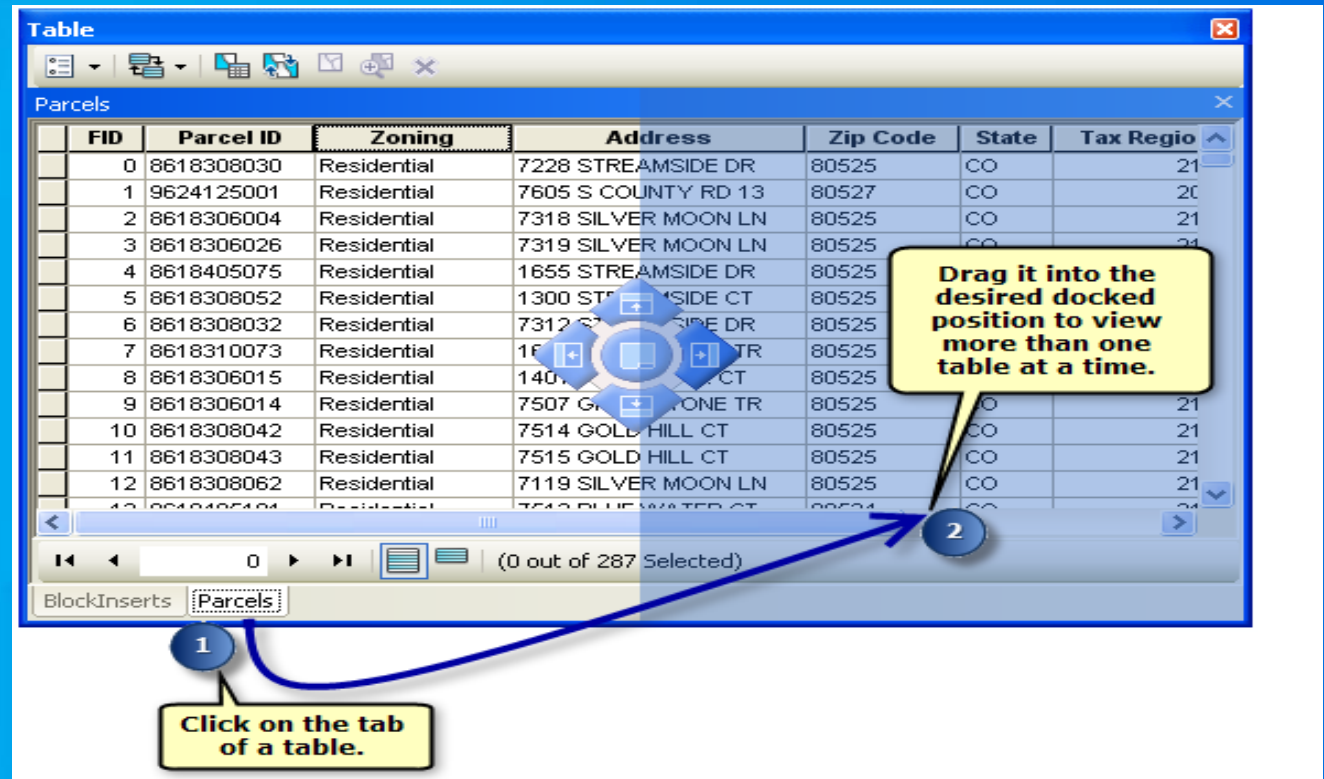
Jorge Ruiz-Valdepeña



Tables

Dockable Table window

- Table window is a container for all open tables
- View multiple tables at once *within* Table window



Working with Field Properties

Turn All Fields On

Turn All Fields Off

Move Field Up

Move Field Down

Sort and Display Options for Fields

Accentuate the Field in the Table window, Identify window and Attributes dialog.

Set a Field to be Editable or Read-Only.

Quick Help for Appearance and Field Detail Properties.

The field properties for a table or layer are used throughout the application. For example, field visibility, sorting and appearance settings are respected in the Table window.

Read-Only
Determines whether field is editable

Layer Properties

General Source Selection Display Symbology Fields Definition Query Labels Joins & Relates Time HTML Popup

Options

Choose which fields will

- LANDUSE_CO
- OBJECTID
- PARCEL_ID
- PROPERTY_I
- Residential
- SHAPE
- SHAPE_Area
- SHAPE_Length
- ZONING
- Zoning_simple

Sort Ascending

Sort Descending

Reset Field Order

Show Field Names

Show Field Aliases

Appearance

Alias	PARCEL_ID
Highlight	Yes
Number Format	Numeric
Read-Only	No

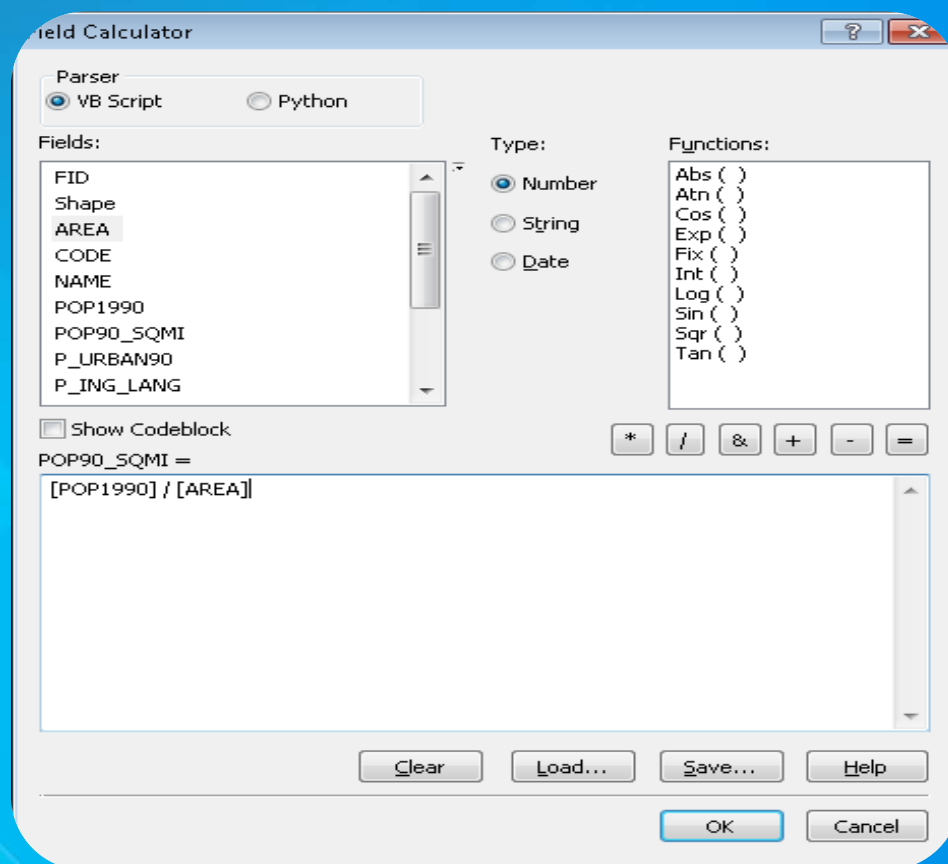
Field Details

Data Type	Long
Name	PARCEL_ID
Allow NULL Values	Yes

OK Cancel Apply

Using the Field Calculator

- Update multiple records in the table



Associating Tables

Joins



Relates



Relationship Classes





Reports

Reports - Examples

Parcel Information

Name	ParcelID	Area_Meters	Address
Ameen Crosby			
	10033	1124.35	12828 Charing Cross Rd
	10034	1125.16	4513 Lockerbie Ct
	10035	1136.7	12852 Charing Cross Rd
	10036	1140.88	12739 Charing Cross Rd
	10037	1140.91	4535 Lockerbie Ct
	10038	1167.85	12730 Wembly Rd
	10039	1172.22	12970 Camborne Ct
	10040	1175.57	4490 Lockerbie Ct
	Count:8	Sum:9183.64	
Anthony Bracket			
	10057	1307.19	
	Count:1	Sum:1307.19	
Anthony Tran			
	10203	977.2	
	10204	1029.57	
	Count:2	Sum:2006.77	

Population Analysis of Mexico

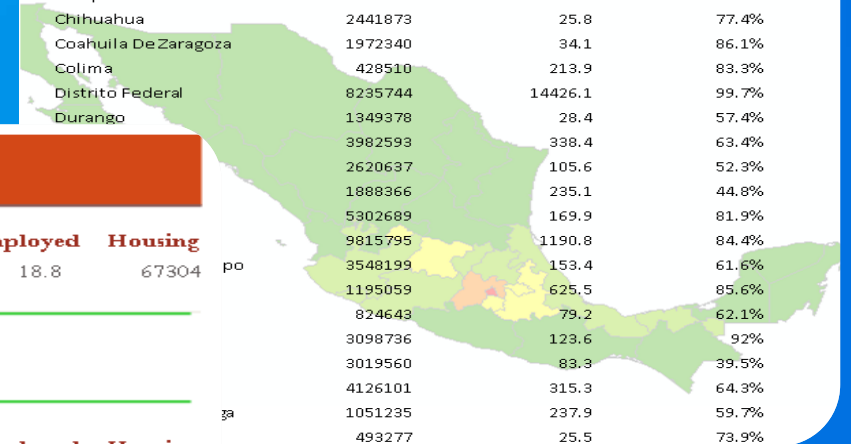
POP90_SQMI	Area	Name	Population	Urban	English	Employed	Housing
10 - 20	27898.2	Baja California Sur	317764	78.3%	1	18.8	67304
	Count: 1						
	Sum: 317764						

POP90_SQMI	Area	Name	Population	Urban	English	Employed	Housing
30 - 40	19782.7	Quintana Roo	493277	73.9%	32.2	15.5	102859
	95771.5	Chihuahua	2441873	77.4%	2.9	35.9	529799
	69542.5	Sonora	1823606	79.1%	3	25.4	378587
	19369.4	Campeche	535185	70%	19	19.4	107894
	46463.6	Durango	1349378	57.4%	1.6	26.6	262164
	57988.4	Coahuila De Zaragoza	1972340	86.1%	0.2	37.7	404691
	Count: 6						
	Sum: 8615659						

Population Analysis of

Mexico

NAME	POP1990	POP90_SQMI	P_URBAN90
Aguascalientes	719659	340.8	76.5%
Baja California Norte	1660855	61.5	90.9%
Baja California Sur	317764	11.2	78.3%
Campeche	535185	27.3	70%
Chiapas	3210496	112.1	40.4%
Chihuahua	2441873	25.8	77.4%
Coahuila De Zaragoza	1972340	34.1	86.1%
Colima	428510	213.9	83.3%
Distrito Federal	8235744	14426.1	99.7%
Durango	1349378	28.4	57.4%
	3982593	338.4	63.4%
	2620637	105.6	52.3%
	1888366	235.1	44.8%
	5302689	169.9	81.9%
	9815795	1190.8	84.4%
	3548199	153.4	61.6%
	1195059	625.5	85.6%
	824643	79.2	62.1%
	3098736	123.6	92%
	3019560	83.3	39.5%
	4126101	315.3	64.3%
	1051235	237.9	59.7%
	493277	25.5	73.9%



Mailing labels

Report Wizard

How would you like to layout your report?

East Learning Center, Dallas 500 Ross Street St. Dallas, TX 75202	East Learning Center, St. Paul 500 West Center Road Suite 200 St. Paul, MN 55101	East Learning Center, Denver 55 Parkside Road 1 Corporate Plaza, Suite 500 Denver, CO 80202
East Learning Center, Olympia 200 Columbia Street NW Suite 200 Olympia, WA 98501	East Learning Center, St. Charles 200 Columbia Square St. Charles, MO 63031	East Learning Center, New York 75 Grand St. FL 4 New York, NY 10004-3202
East Learning Center, Sacramento 1400 G Street Suite 20 Sacramento, CA 95814-4002	East Learning Center, Arlington 500 St. Regis Dr Suite 100 Arlington, VA 22201	East Learning Center, Harris 601 E. Woodland Center Street Suite 200 Harris, VA 22080-0200
East Learning Center, Redwood 200 West Redwood Blvd Redwood Redwood, CA 92075	East Learning Center, San Antonio 207 Houston 148014 Suite 100 San Antonio, TX 78202	East Learning Center, Charlotte 3200 Springhill Court Suite 200 Charlotte, NC 28206-3200
East Learning Center, Brownfield 1 International Court Brownfield, CA 92021	East Learning Center, Houston 11200 Westchase Rd 404 Floor Houston, TX 77036	East Learning Center Regional Office 500 Ross Street St. Dallas, TX 75202

Layout

Stepped

Outline

Mailing Label

Avery 5160

Orientation

Portrait

Landscape

Adjust the field widths so all fields fit in a single row in the Report.

Cancel < Back Next > Finish

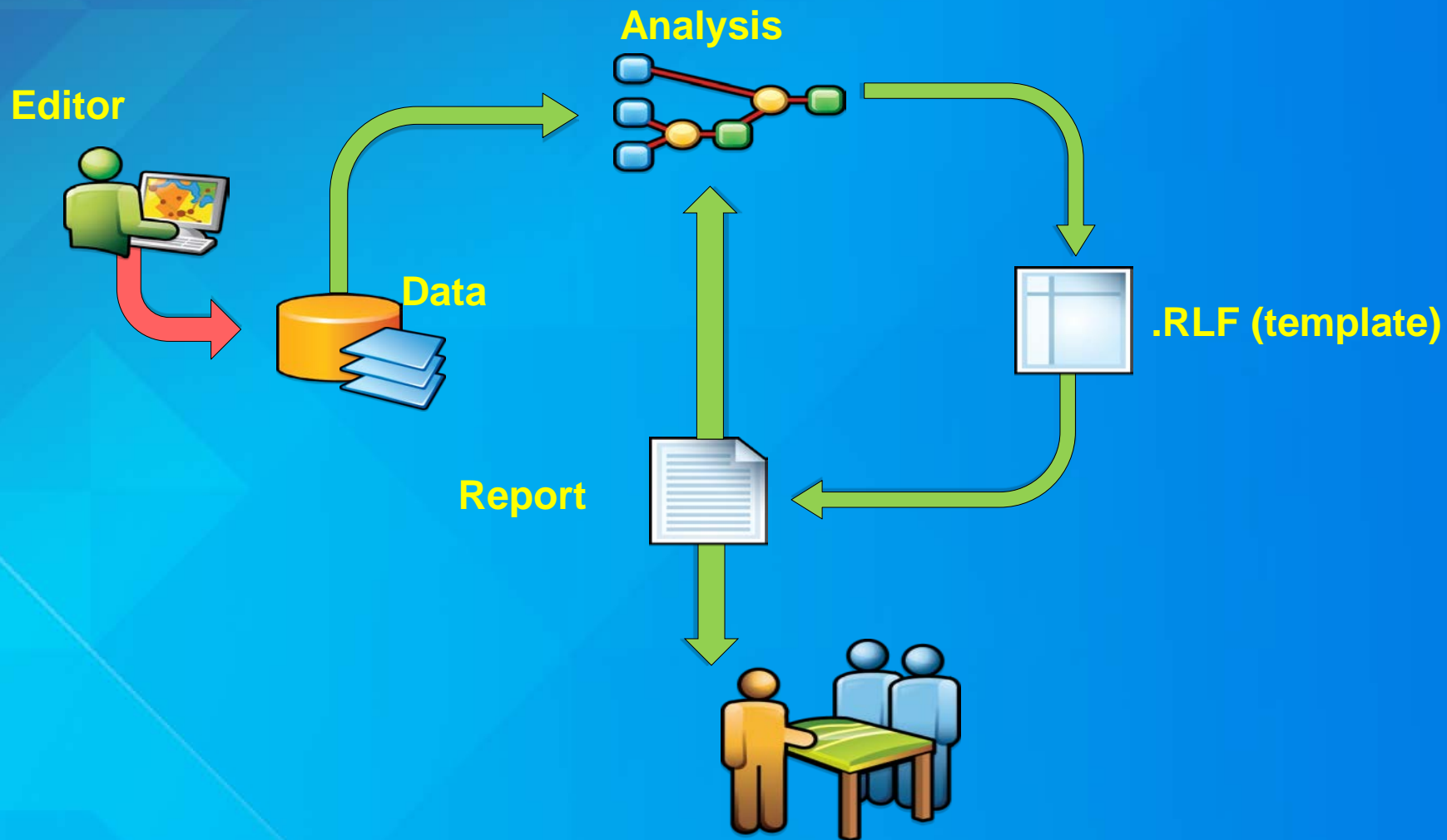
Cancel

< Back

Next >

Finish

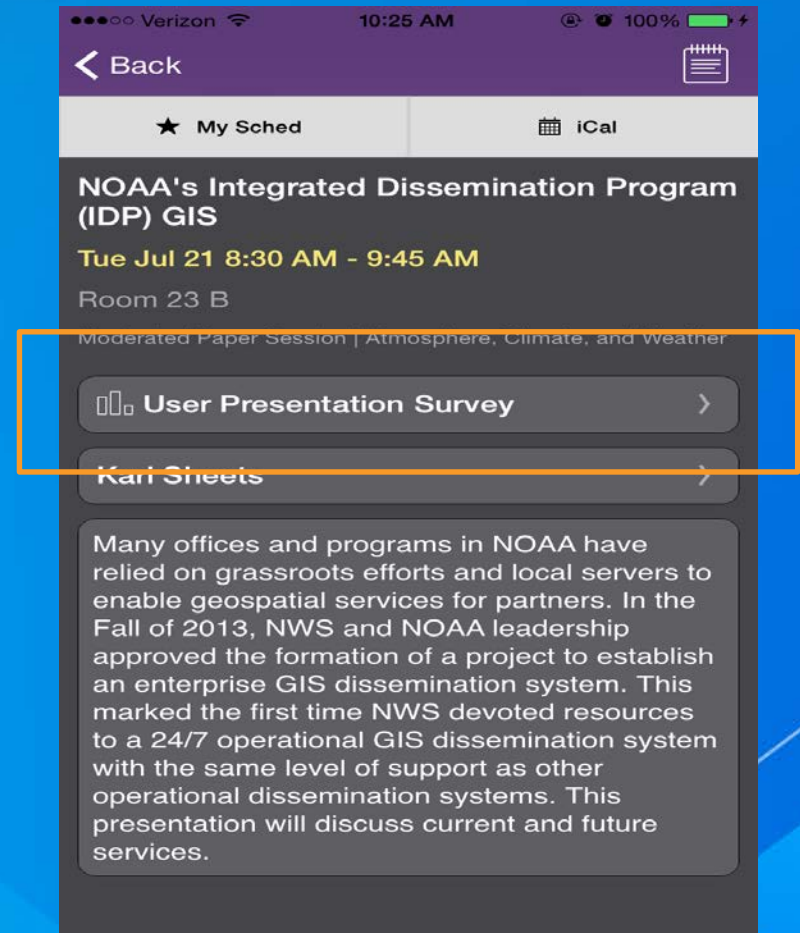
Running Reports - Workflows



Thank you...

<http://www.esri.com/library/brochures/pdfs/arcgis-desktop-tips.pdf>

- Please fill out the session survey in your mobile app
- In the Mobile App, Select
- “Tips and Tricks with Tables and Reports in ArcMap ”
 - Use the Search Feature to quickly find this title
- Click “User Presentation Survey”
- Answer a few short questions and enter any comments





Understanding our world.