



Network Analyst in ArcGIS Pro

Scott Sandusky

Network Analyst in ArcGIS Pro

Demo Theater Presentation

- **This session covers how to use Network Analyst in ArcGIS Pro. It will also discuss how to use ArcGIS 10.3 to add a Service Area Index and Travel Modes to a network dataset which can be used for faster and more accurate service area generation and to simplify setting analysis settings within ArcGIS Pro.**
- **Wednesday, 2:30pm - 3:15pm**
- **Demo Theater 13 - Spatial Analysis**
- **Beginner**

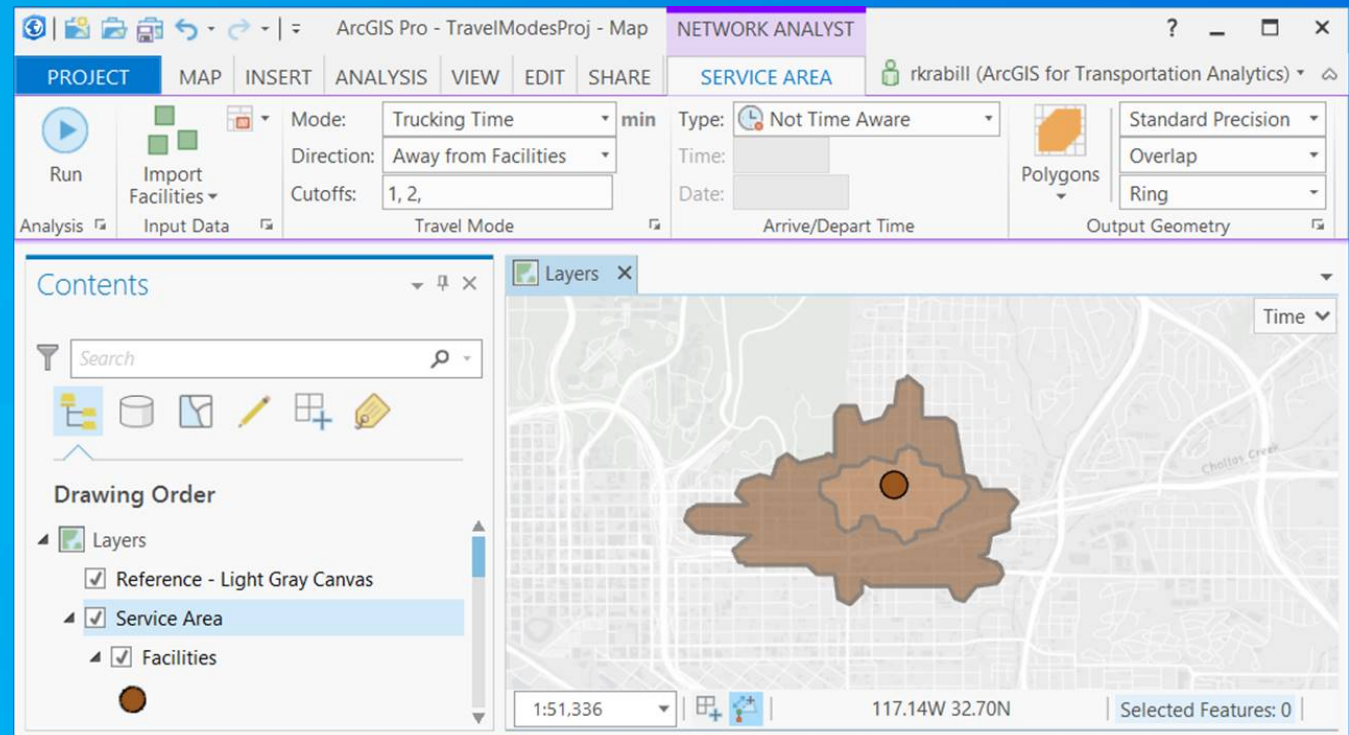
Agenda – 45 minutes

- **Local Data**
- **Online Services**
- **Service Area Index**
- **Travel Modes**
- **Roadmap**
- **Questions & Conversation**

What can you do today in Pro?

Network Analysis

- Ribbon analysis – Route and Service Area
- ArcGIS Online services – all except VRP
- Geoprocessing tools – all except VRP
- 3D



Demo

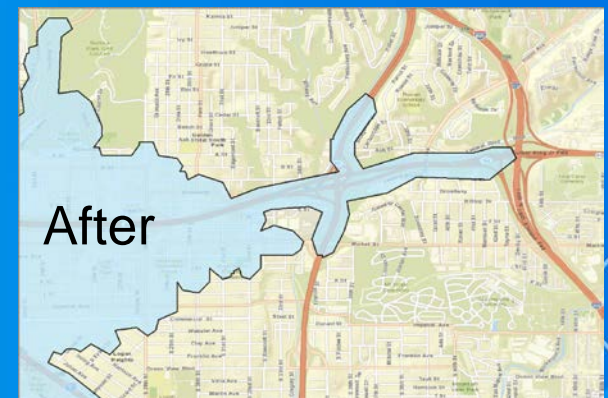
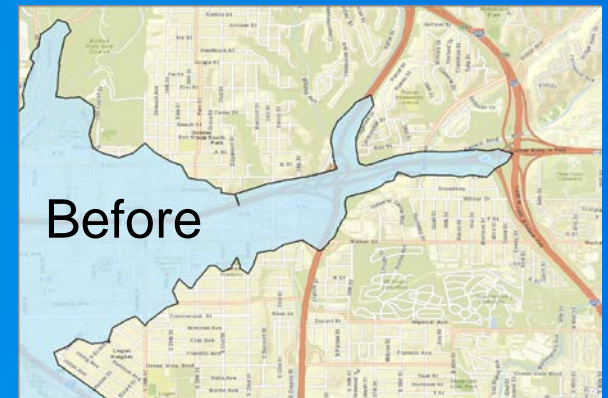
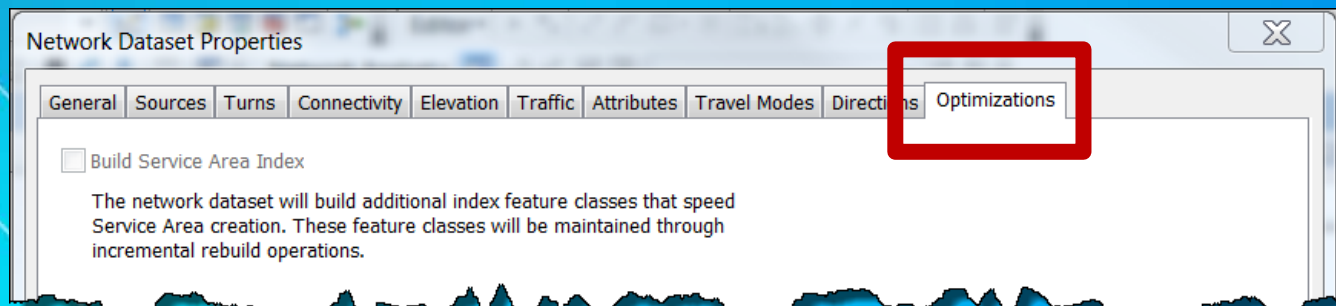
Local data & Online services

Service Area Index

Fast and Exact

- From 15 times to 200 times faster depending on the scenario
- First introduced in ArcGIS Online
- Now available in Desktop and Server (10.3)
 - Create in ArcMap, Use in Pro
- Network Dataset Property

Define in Setup

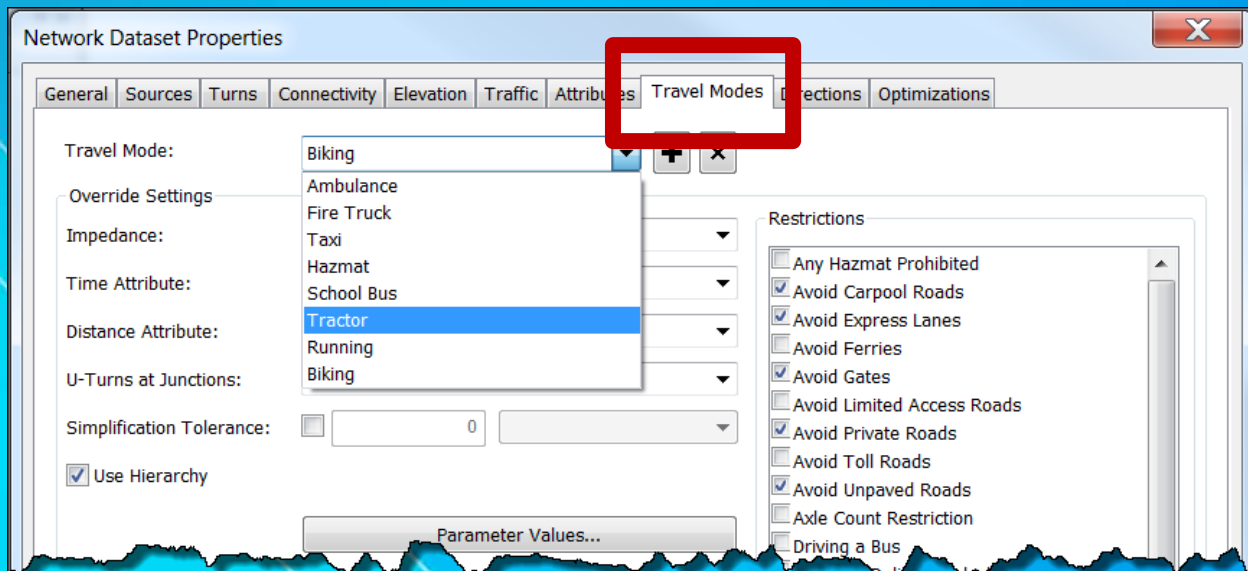


Travel Modes

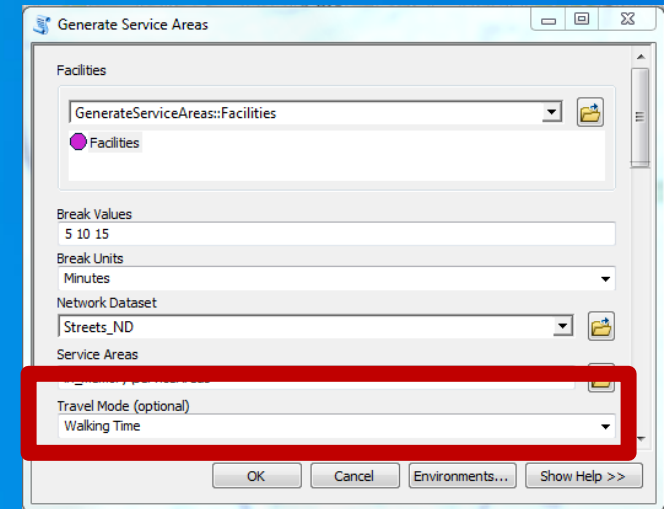
Simple Configuration of Advanced Properties

- Simple way to configure complex route analysis settings
 - Administrators have an interface for configuration
 - Users have pre-defined travels mode that “just work” with apps
- 10.3 - users can define their own custom travel modes
 - Embed travel modes in a network, leverage them from common workflows
- Travel modes accessible in:
 - ArcGIS Server, ArcGIS Pro (Ribbon & GP), and ArcMap GP

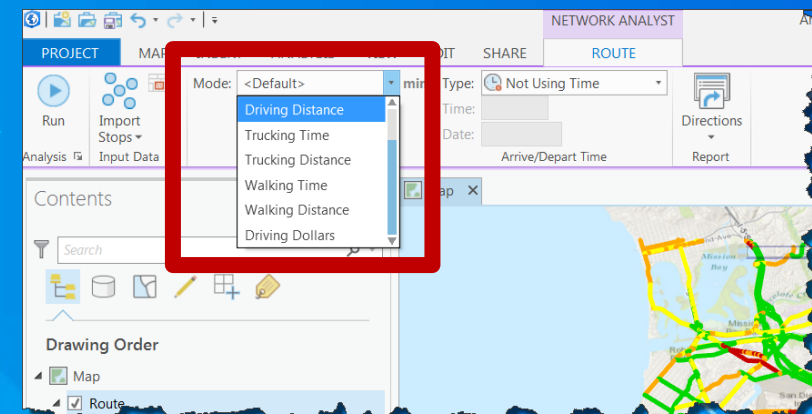
Define in Setup



Use in Geoprocessing



Use in Pro



Demo

Service Area Index, Travel Modes

Roadmap

Network Analysis in Pro

- **Travel Modes** – create and manage
- **Service Area Index** – create and manage
- **Route index** – fast and exact solves
- **Ribbon tools** – all Network Analyst Solvers
- **Ribbon tools** – work with ArcGIS Online services
- Simplify creation and maintenance of **custom networks**
- **Packaging experience** for offline routing and geocoding on mobile devices.
 - Navigator for ArcGIS.
- Performance and speed

Other Sessions

- Network Analyst: **Performing** Network Analysis
 - Wednesday, 3:00
 - Tech Theater 17 Exhibit Hall A
- Network Analyst: An **Introduction**
 - Thursday, 10:15
 - Room 15 A

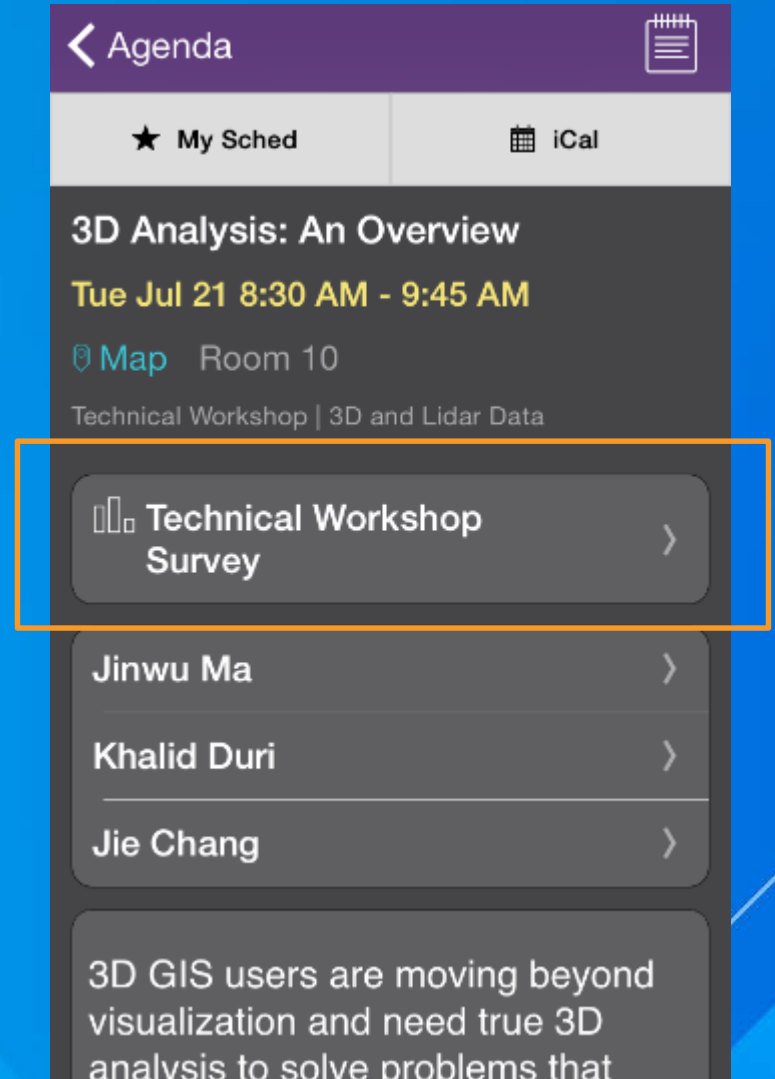
Come to the Network Analyst island!

Want to learn more?

- **Network Analyst Extension Help (Pro)**
 - Includes tutorial with data
 - <http://pro.arcgis.com/en/pro-app/help/analysis/networks/what-is-network-analyst-.htm>
- **Network Analyst Toolbox Help (Pro)**
 - <http://pro.arcgis.com/en/pro-app/tool-reference/network-analyst/an-overview-of-the-network-analyst-toolbox.htm>
- **Email me: ssandusky@esri.com**

Thank you...

- Please fill out the session survey in your mobile app
- Select **Network Analyst in ArcGIS Pro** in the Mobile App
 - Use the Search Feature to quickly find this title
- Click “Technical Workshop Survey”
- Answer a few short questions and enter any comments



Questions?