



# ArcGIS as a Platform – Putting it all Together

John Thieling

Miriam Schmidts

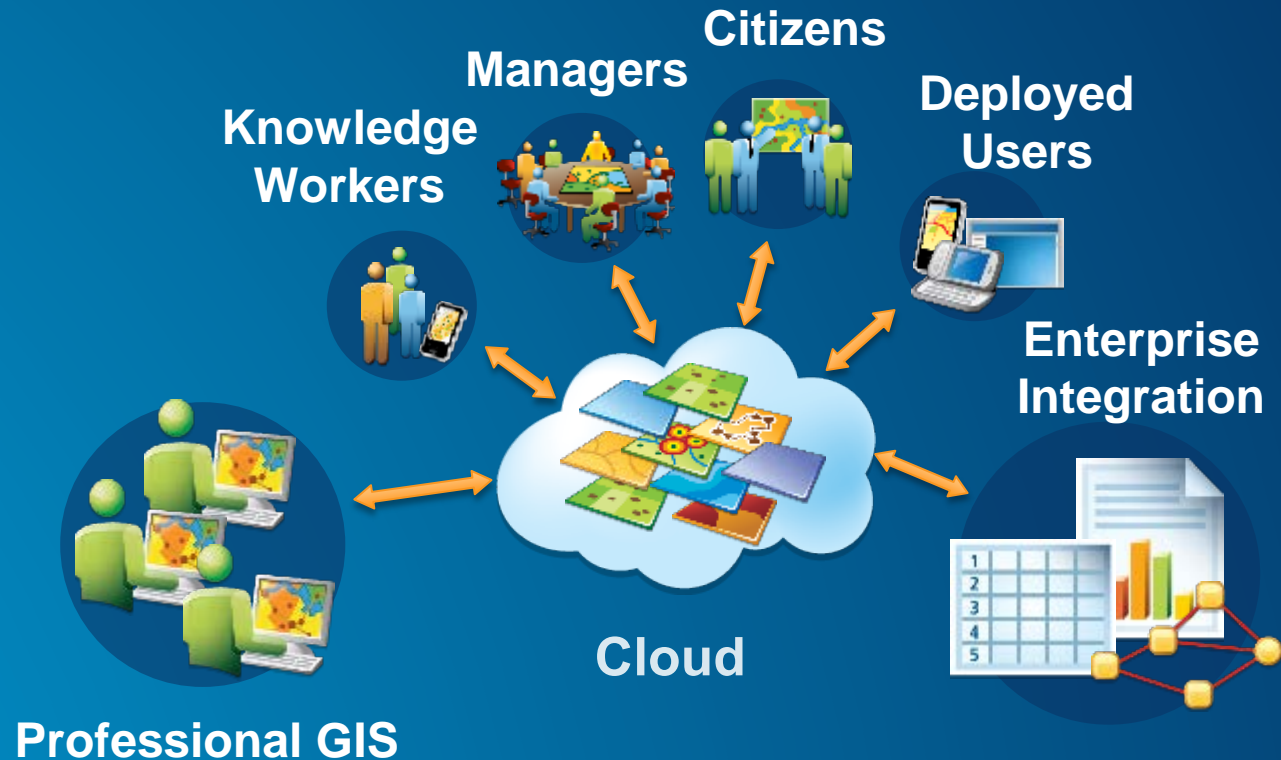
# What's covered in this session

- **What is ArcGIS as a platform?**
- **Case Study: Volunteer bald eagle count**
  - Platform empowers people
  - Components for shared mapping

# ArcGIS as a platform...

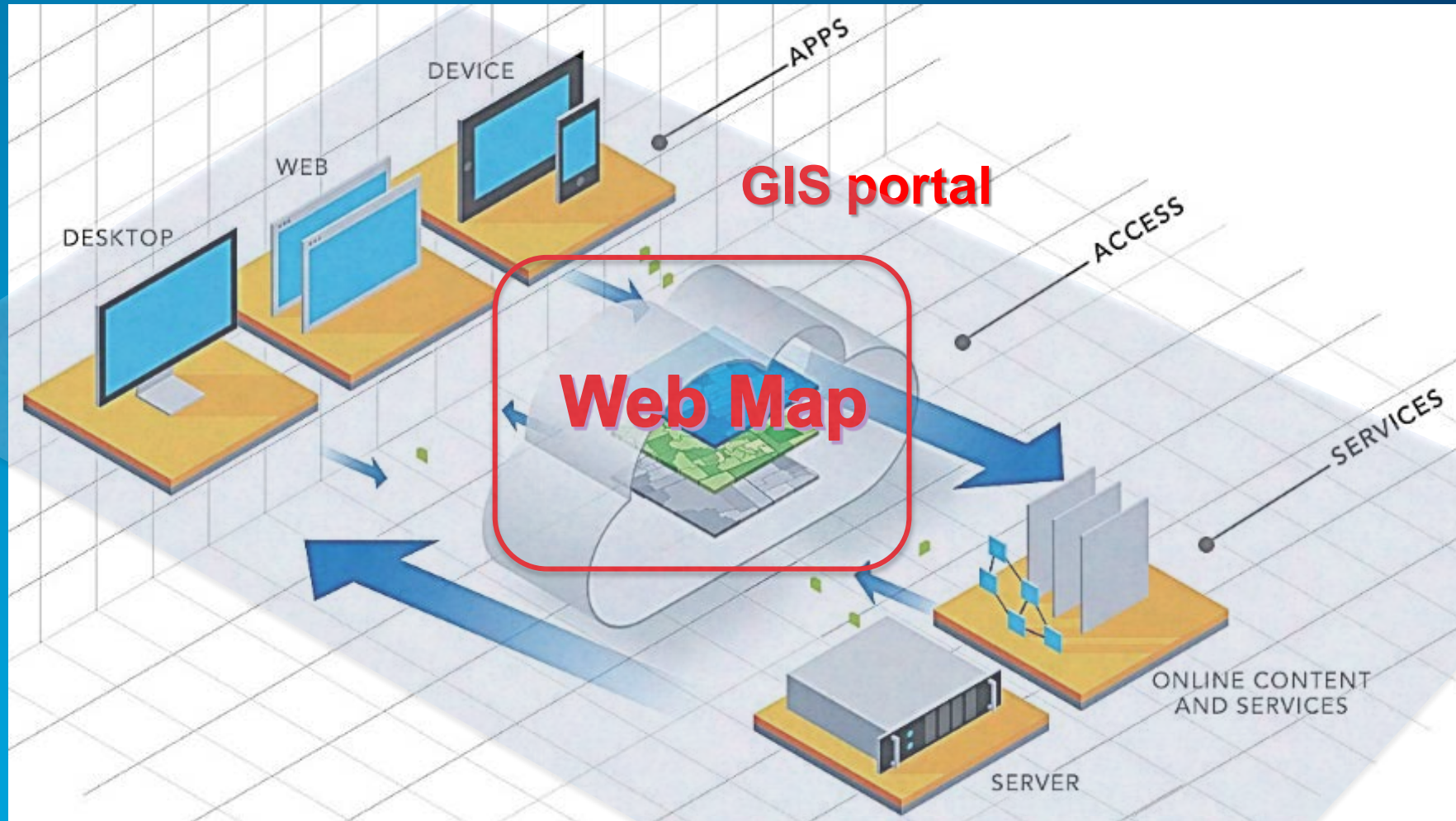
Provides Geospatial Capabilities Across the Entire Organization

- Mapping
- Analysis
- Visualization



... A Framework For Sharing, and Collaboration

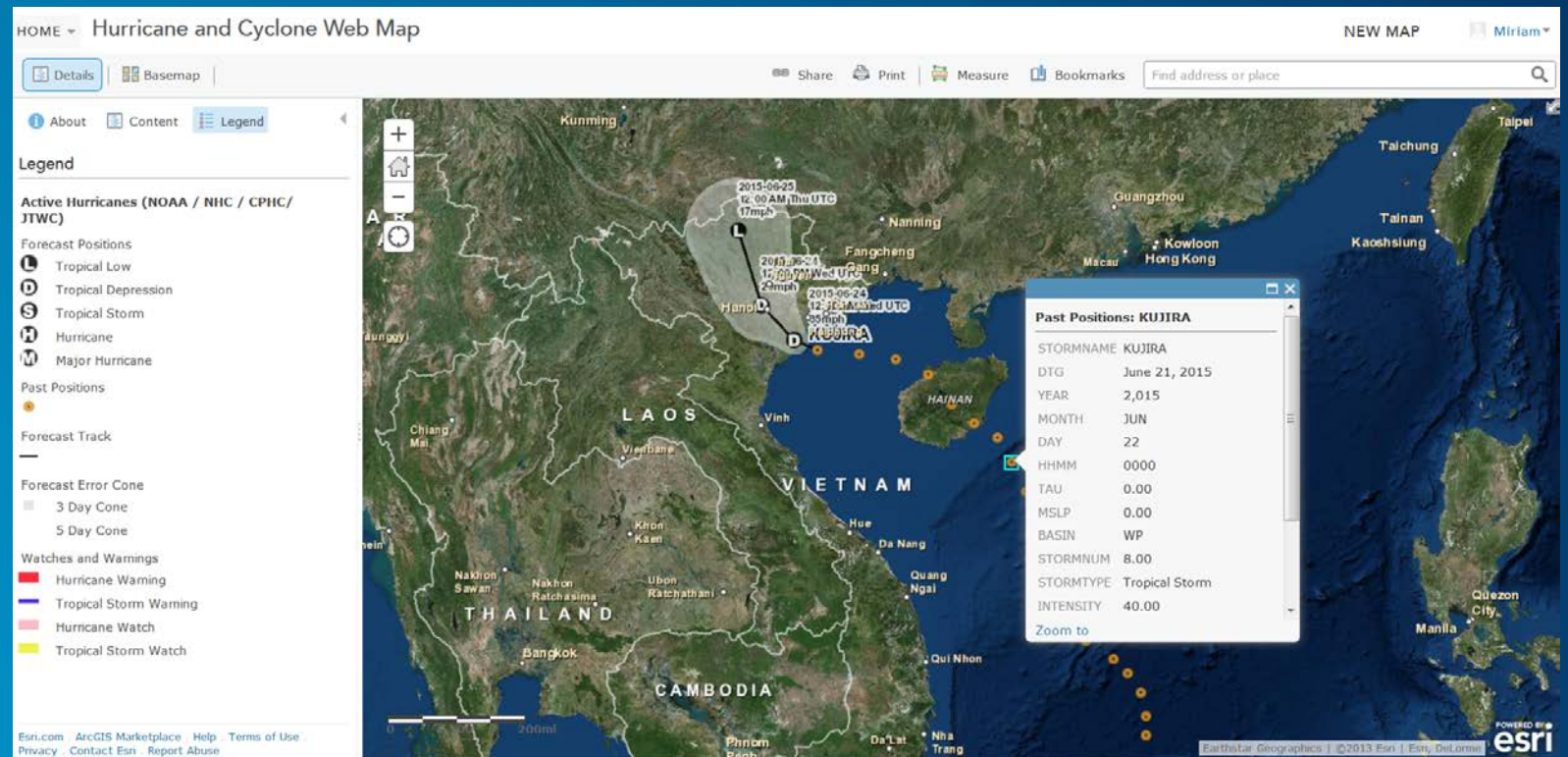
# The ArcGIS platform





# Web Map

- A map stored in ArcGIS Online or Portal for ArcGIS
  - Basemap
  - Operational layers
  - Legend
  - Scalebar
  - Optional: Bookmarks
- Layers are web layers



# Web Layers

Also called services

- **Feature Layers**
  - Streams vector features on the web
  - Allow query, visualization, and editing
- **Tile Layers**
  - Streams pictures of the data on the web
  - Draw fast

# One map for any device

On the ArcGIS platform the web map format is ubiquitous...



# Location Analytics

Geo-Enable the Enterprise with Esri's Open Mapping Platform



**Break Down Silos**

Increase Collaboration



# Using what you know to “plug in” to the platform

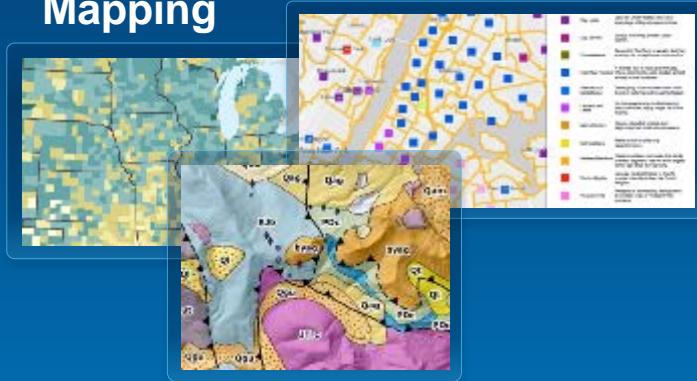
Esri maps for...



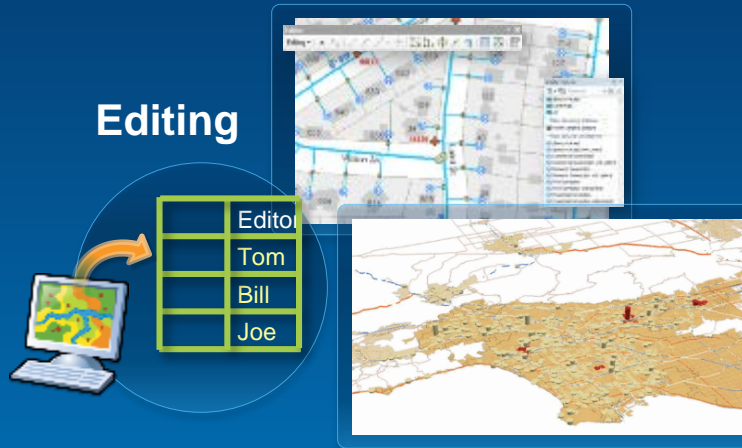
# Integrate ArcGIS for Desktop capability

Authoring authoritative content...

## Mapping



## Editing



## Visualization



## Analysis



¼ Mile

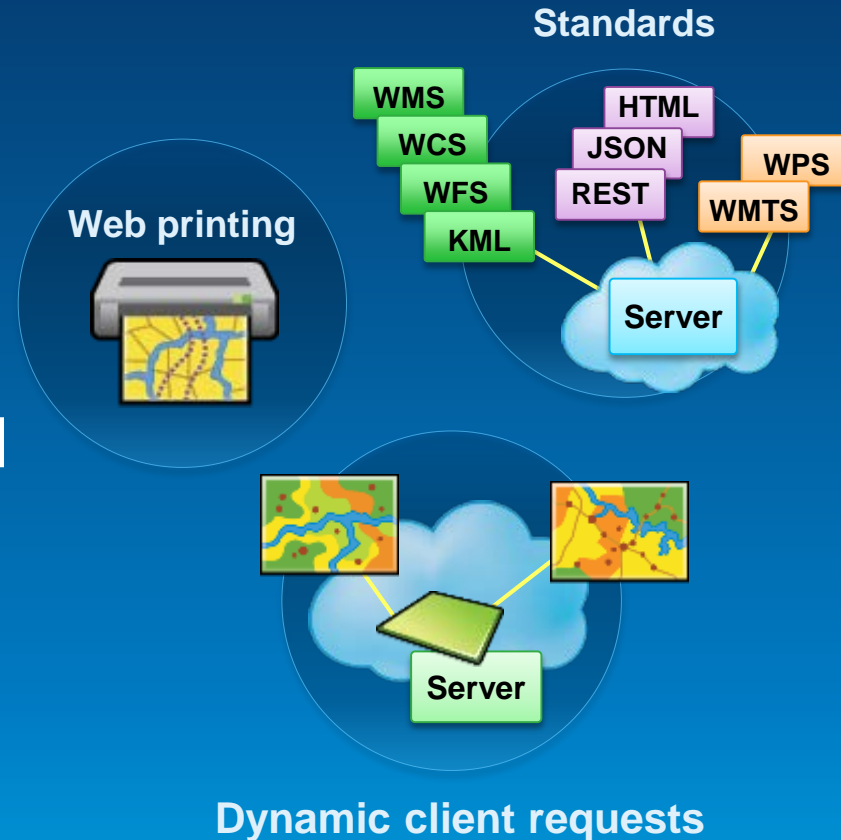
½ Mile

1 Mile

# Web service infrastructure

Provides an open web sharing model

- **Fast**
- **Scalable**
- **Protocol rich**
- **Standards-based**
- **Secure**



*Dramatically Improving GIS Infrastructure*

# Functionality based on service types



## Map

*View or query a 2D map*



## Feature

*Edit, view, or query features*



## Geocode

*Find address locations*



## Geoprocessing

*Run a tool or model on the server and get the results back*



## Image

*Provide access to raster data*