



Advanced workflows for creating 3D Web Scenes in ArcGIS Online

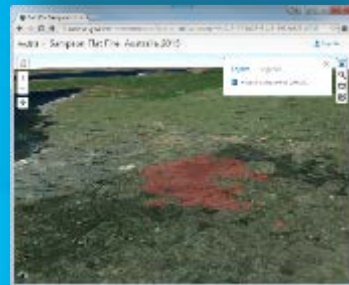
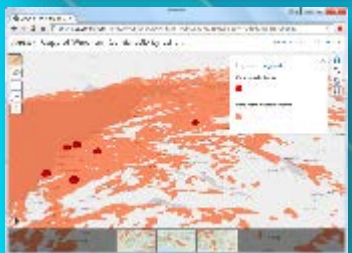
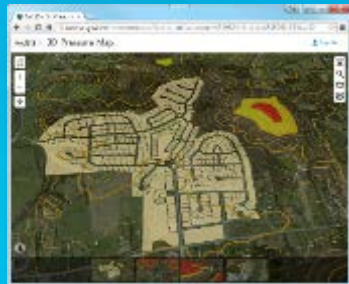
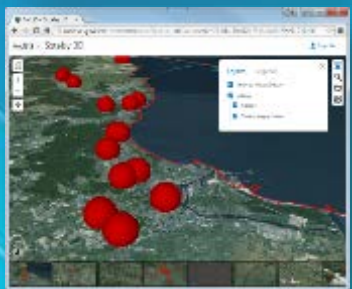
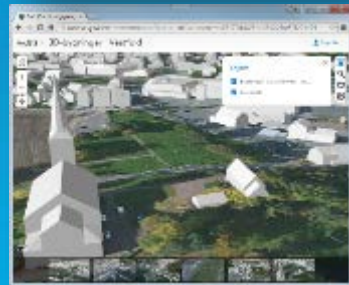
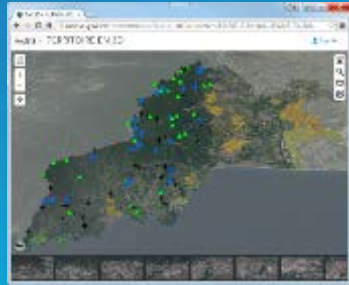
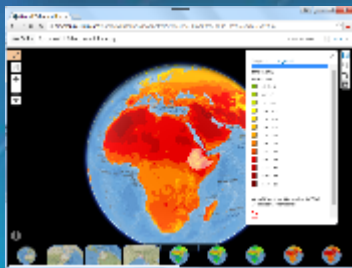
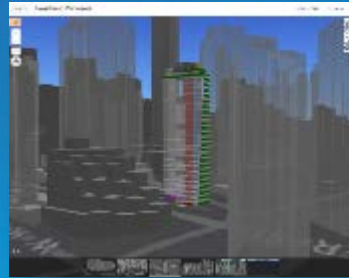
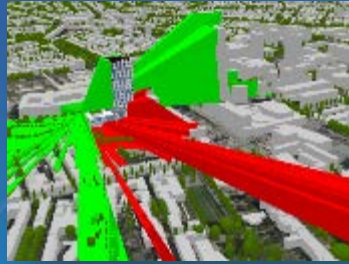
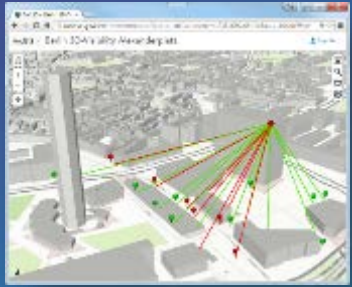
Javier Gutierrez and Janett Baresel

Agenda

- **Introduction**
- **Viewing a scene**
 - Layers, Environment, Slides...
- **Authoring a scene**
 - Layers List, Adding Layers, Configuring Layers, Slides...
- **Advanced Workflows**
 - Configure Scene Layers List
 - Create a Scene with ArcGIS Pro
 - Configure Layers with Map Viewer
 - Embed a scene in a Story Map
- **Wrap-up**

Agenda

- **Introduction**
- Viewing a scene
- Authoring a scene
- Advanced Workflows
- Wrap-up



3D across the Platform

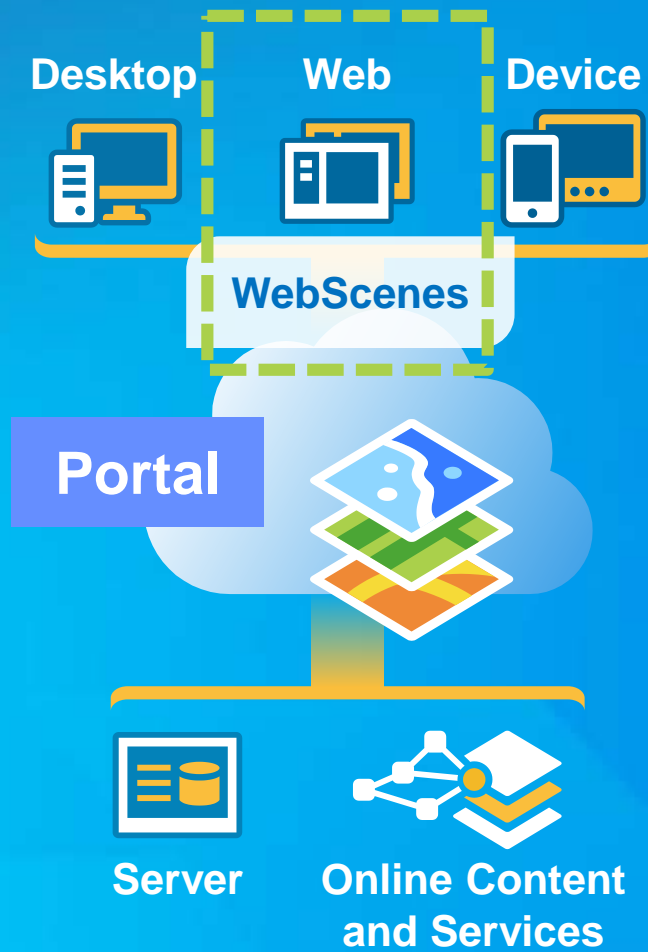
Edit and manage 2D and 3D data

Create visualizations and analyses

Package data for distributed use

Customize the end user experience

3D in the ArcGIS Platform



Web Scene Viewer

- **Tool to View, Author and Share 3D Web Scenes**
 - ArcGIS Online and On-Premise Portal
- **Browser based web application - WebGL**
 - Modern Browser + Graphics Card required
- **Built with ArcGIS API for JavaScript**
- **Modern, Simple user experience**

Agenda

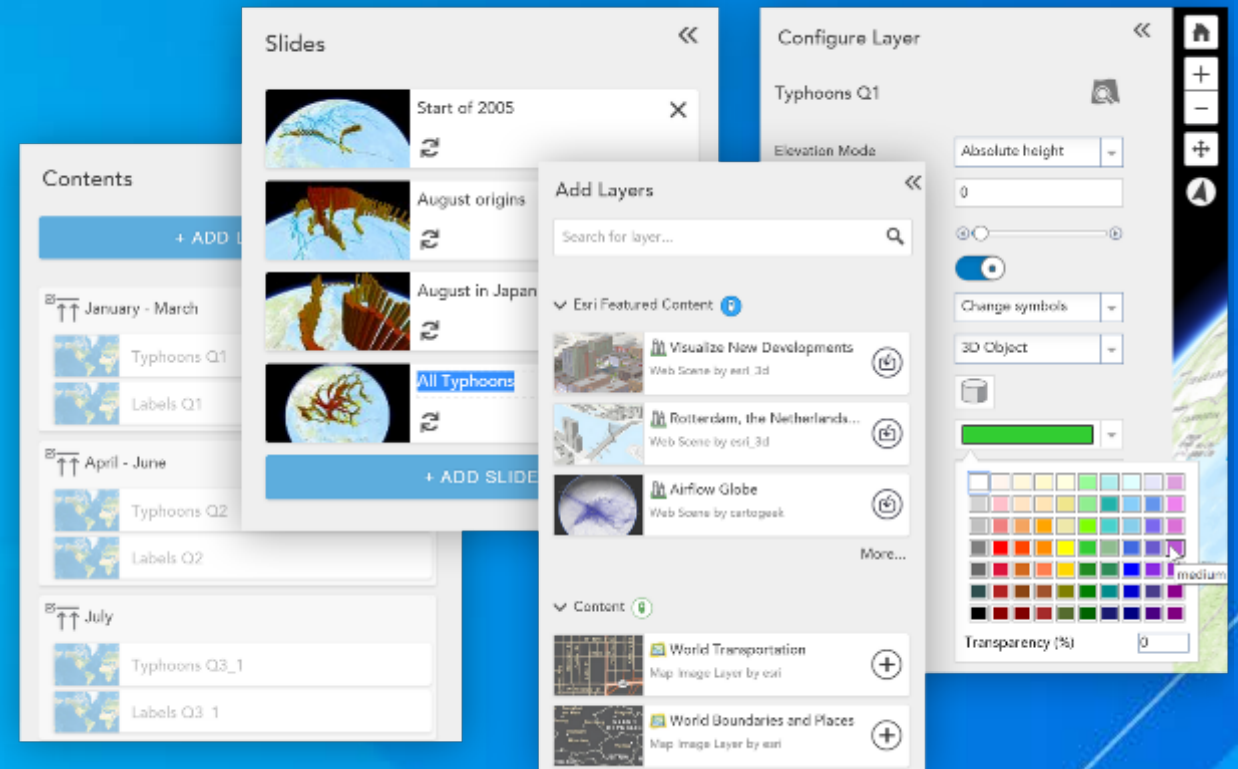
- Introduction
- **Viewing a scene**
- Authoring a scene
- Advanced Workflows
- Wrap-up

Viewing a Scene

Viewer

vs.

Author



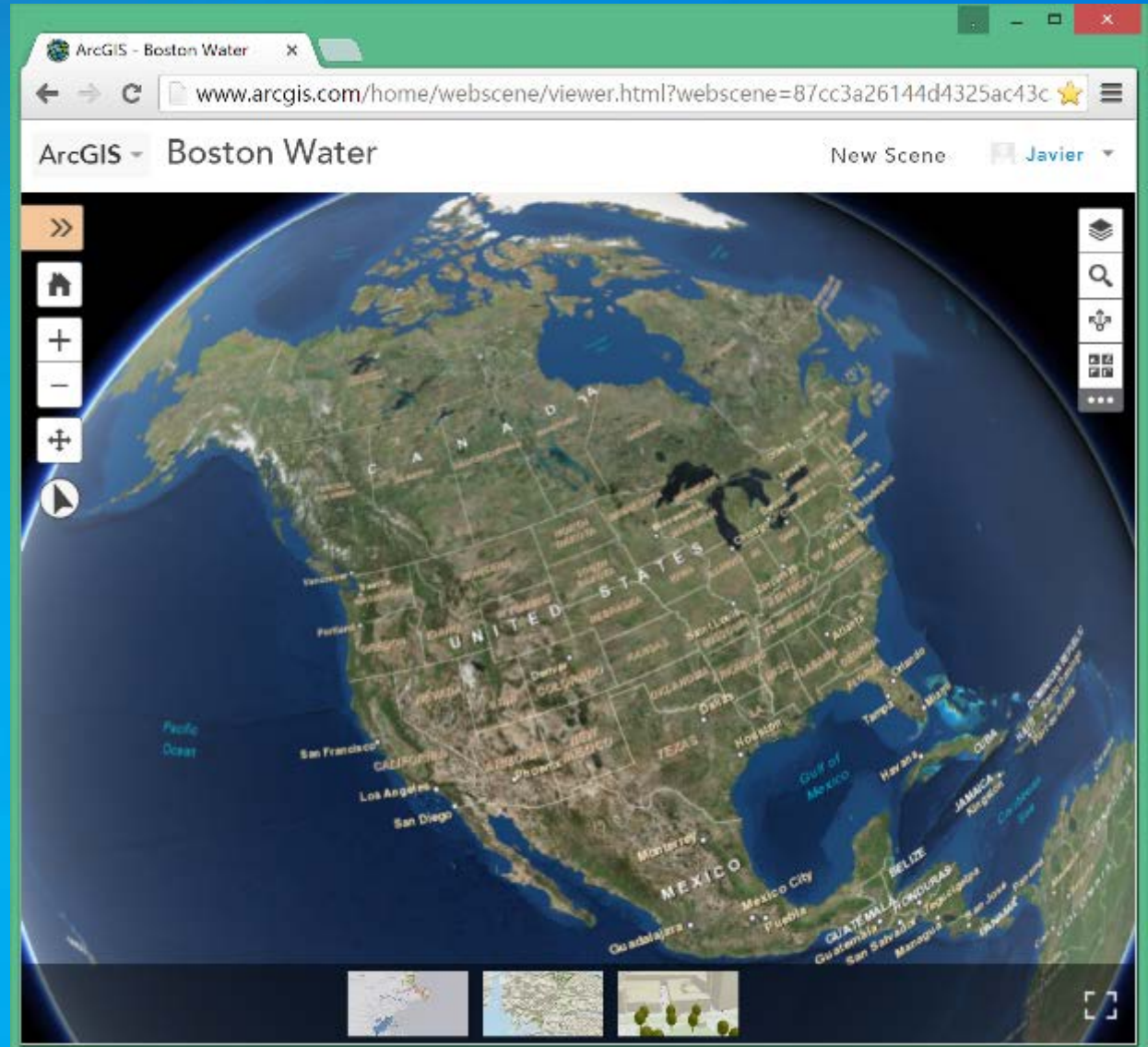
Viewing a Scene

(1) Slides

- Navigation in 3D
- Highlights of a scene

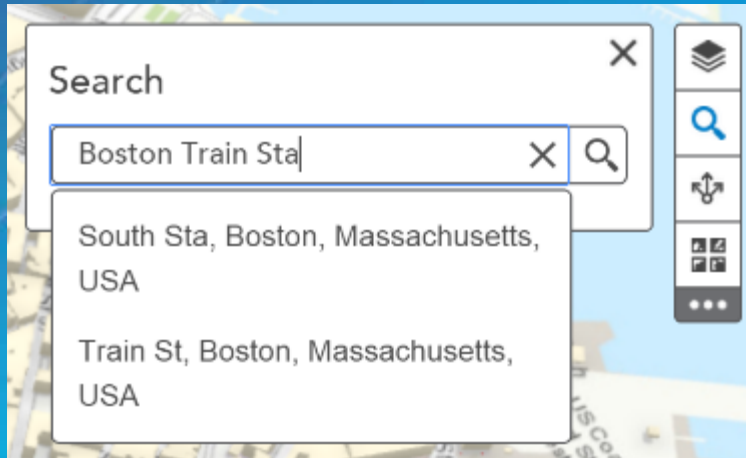
(2) Full screen mode *New at 3.8!*

- Immerse yourself in 3D



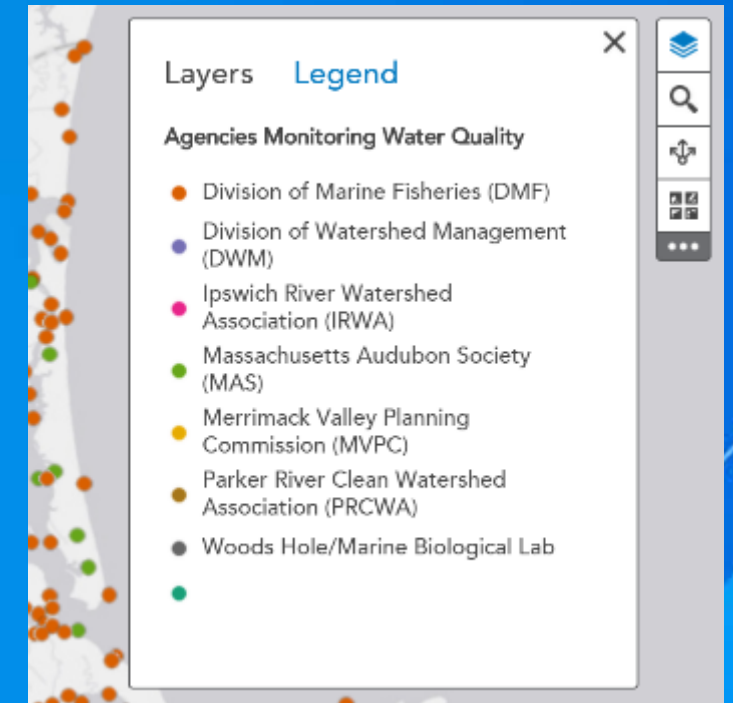
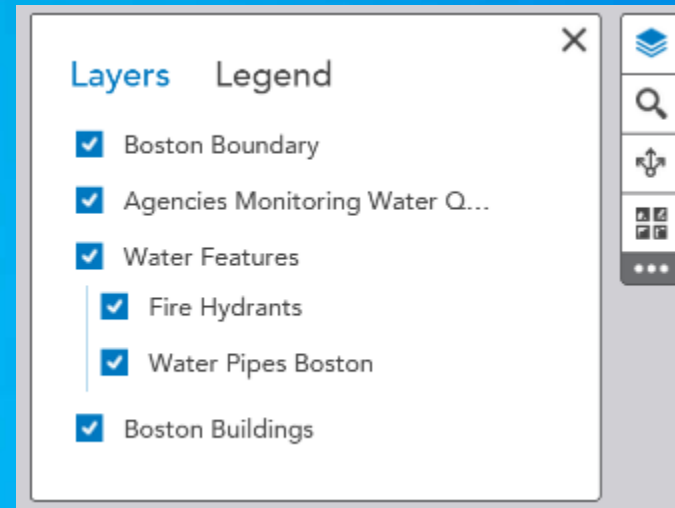
Viewing a Scene

(3) Search



(4) Layers and Legend

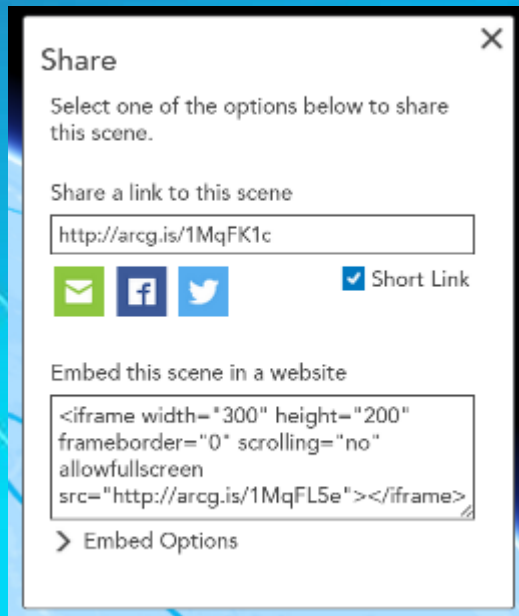
- Layers tool helps users understand data
- Legend explains data meaning



Viewing a Scene

(5) Light & Shadows

- Configure the scene sun light
- Enable realistic shadows



• (6) Share & Embed *New at 3.8!*

- Share within your organization or with the world!

Viewing a Scene

(7) Basemaps

- Customize the basemap gallery for your organization

(8) See-through Ground *New at 3.8!*

- 3D data often includes data being below the ground
- Simple switch to allow anyone to discover underground data

Agenda

- Introduction
- Viewing a scene
- **Authoring a scene**
- Advanced Workflows
- Wrap-up

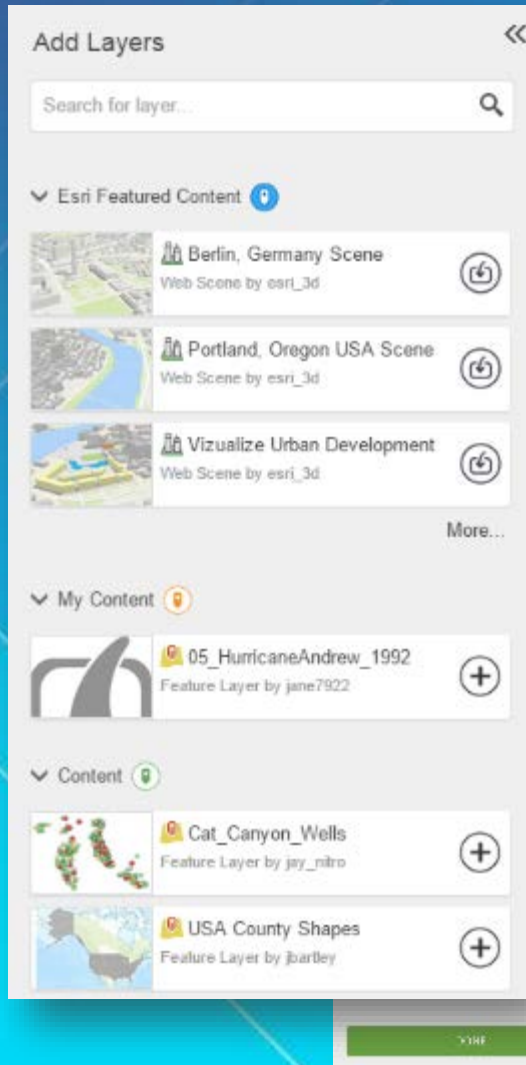
Authoring a Scene

(10) Adding content

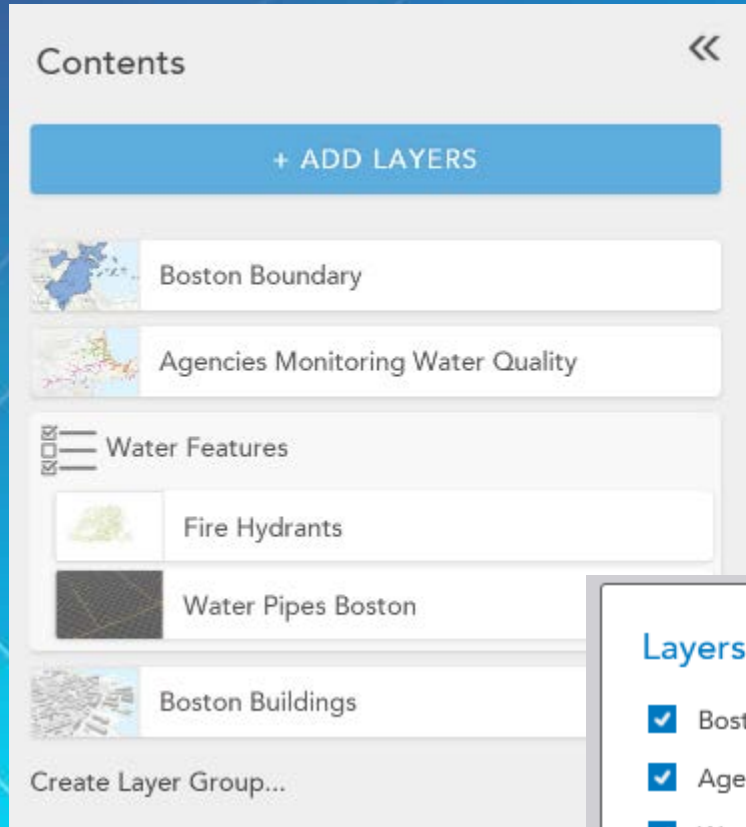
- Search for specific content
- Explore content on the globe

Supported Layer Types:

- *Scene layers*
- *Elevation layers*
- *Feature layers*
- *Tiled/Dynamic map layers*
- *Tiled image layers*

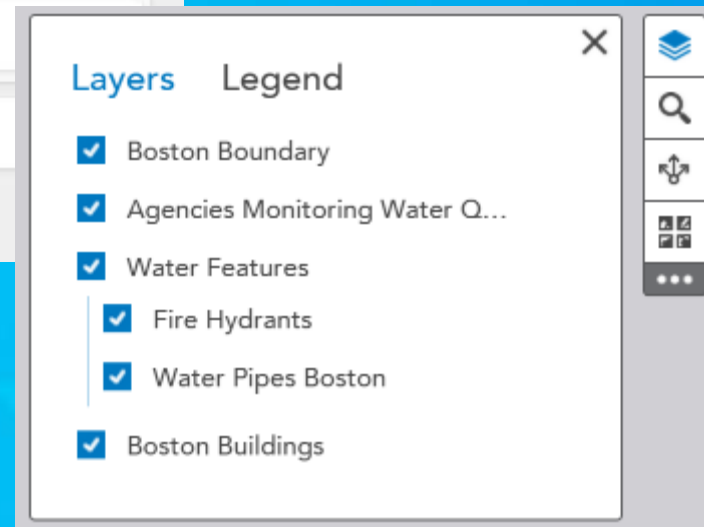


Authoring a Scene



(9) Structuring your content

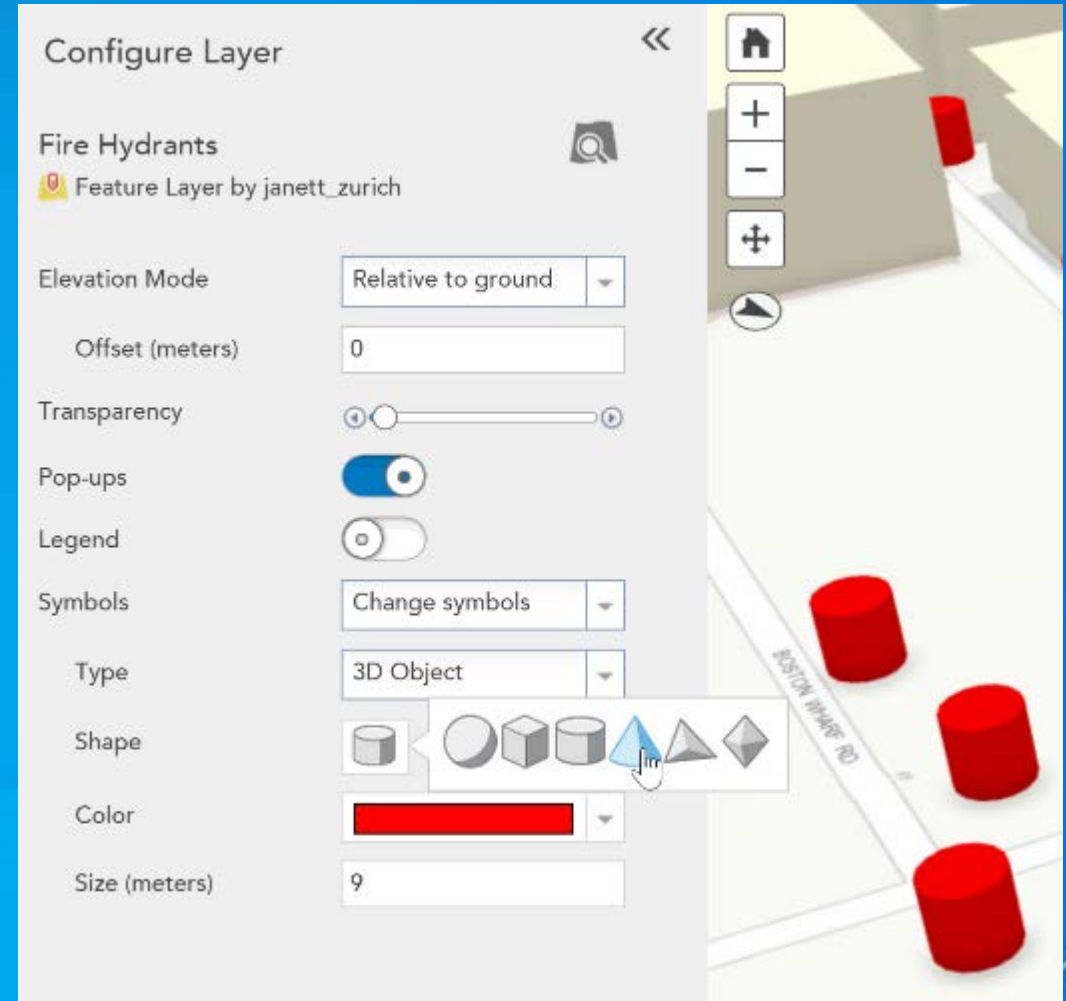
- Decide what the user needs to see
- Reduce complexity by:
 - Hiding layers in the table of contents
 - Grouping layers to increase understanding



Authoring a Scene

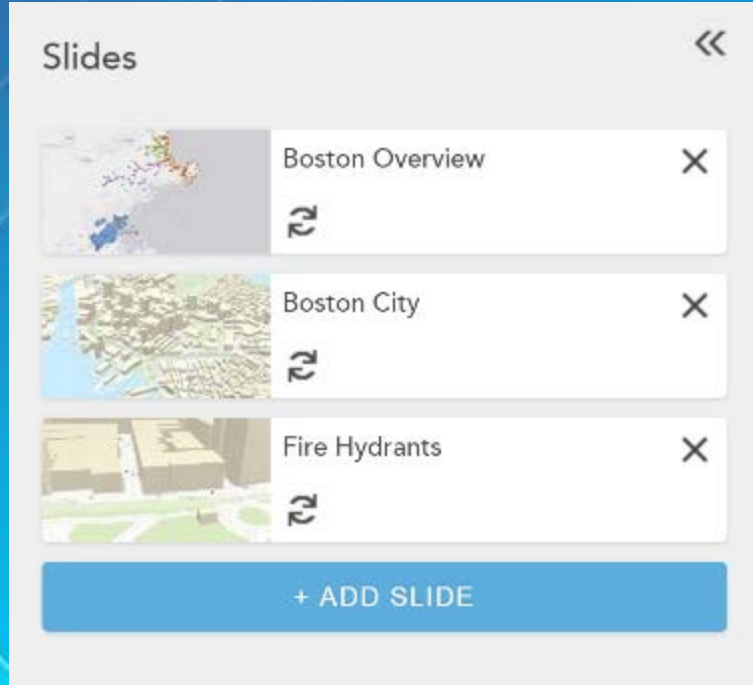
(11) Configure content

- Easy configuration of a layer
- Options vary depending on layer type
 - Elevation Mode
 - Transparency
 - Pop-ups
 - Legend*
 - Labels*
 - Symbols



* current only option is to enable/disable

Authoring a Scene



(12) Slides

- Create important views for your scene
- Slides store the scene state:
 - Camera position
 - Light and shadows
 - Layer visibility
 - Basemap and see-through ground

Agenda

- Introduction
- Viewing a scene
- Authoring a scene
- **Advanced Workflows**
- Wrap-up

Configure Scene Layers List

<http://www.arcgis.com/home/webscene/viewer.html?webscene=7feebfc0ac3e4b95bbf7dd30c739db8f>

Advanced Workflow

Create a Scene with ArcGIS Pro

Advanced Workflow

Configure Layers with Map Viewer

Advanced Workflow

Embed a scene in a Story Map

Advanced Workflow

Agenda

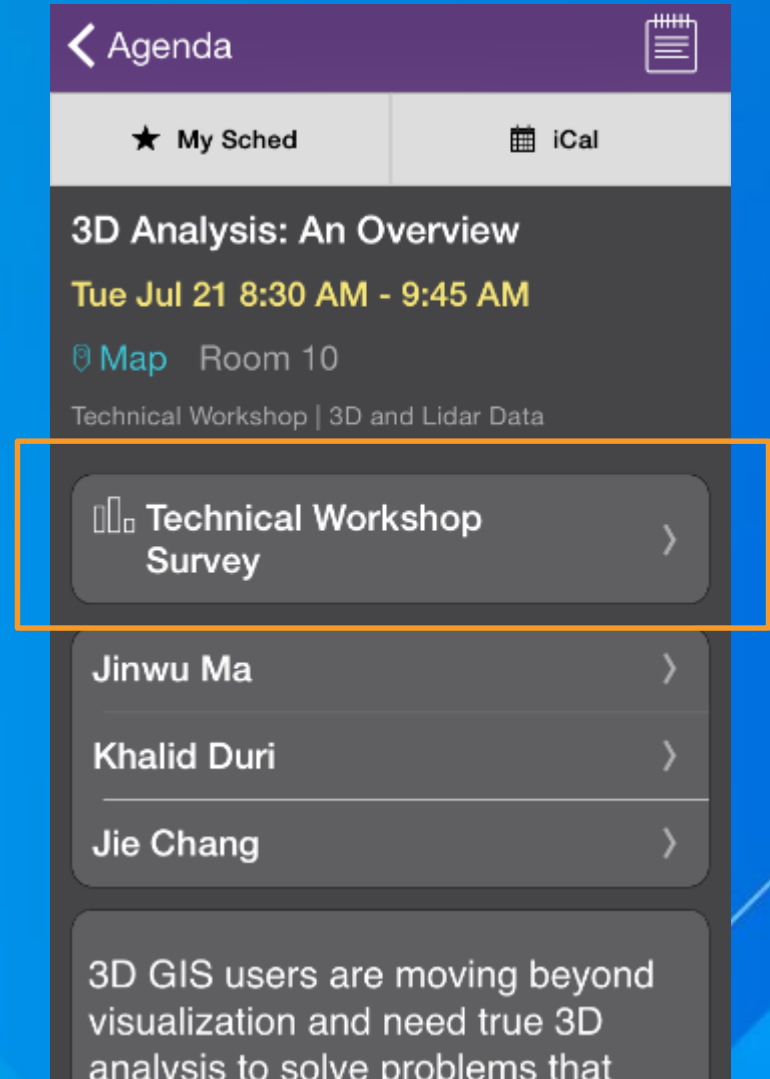
- Introduction
- Viewing a scene
- Authoring a scene
- Advanced Workflows
- **Wrap-up**

Wrap-up

- **Scene Viewer**
 - Available now in ArcGIS Online and on-premise Portal
 - View and Create Web Scenes
 - Integrated with the platform (Pro, Runtime)
 - Built with the new ArcGIS 4.0 API for JavaScript
- **Scene**
 - 3D environment and navigation
 - Mashup basemap, elevation and layers
 - New 3D symbology and properties
 - Slides for sharing scene state

Rate this session!

- Please fill out the session survey in your mobile app
- Select “Advanced workflows for creating 3D Web Scenes in ArcGIS Online” in the Mobile App
 - Use the Search Feature to quickly find this title
- Click “Technical Workshop Survey”
- Answer a few short questions and enter any comments



Thanks!

Find the WebScenes
and Layers used in
this presentation here:

<http://arcg.is/1fTGeCS>



Questions?