

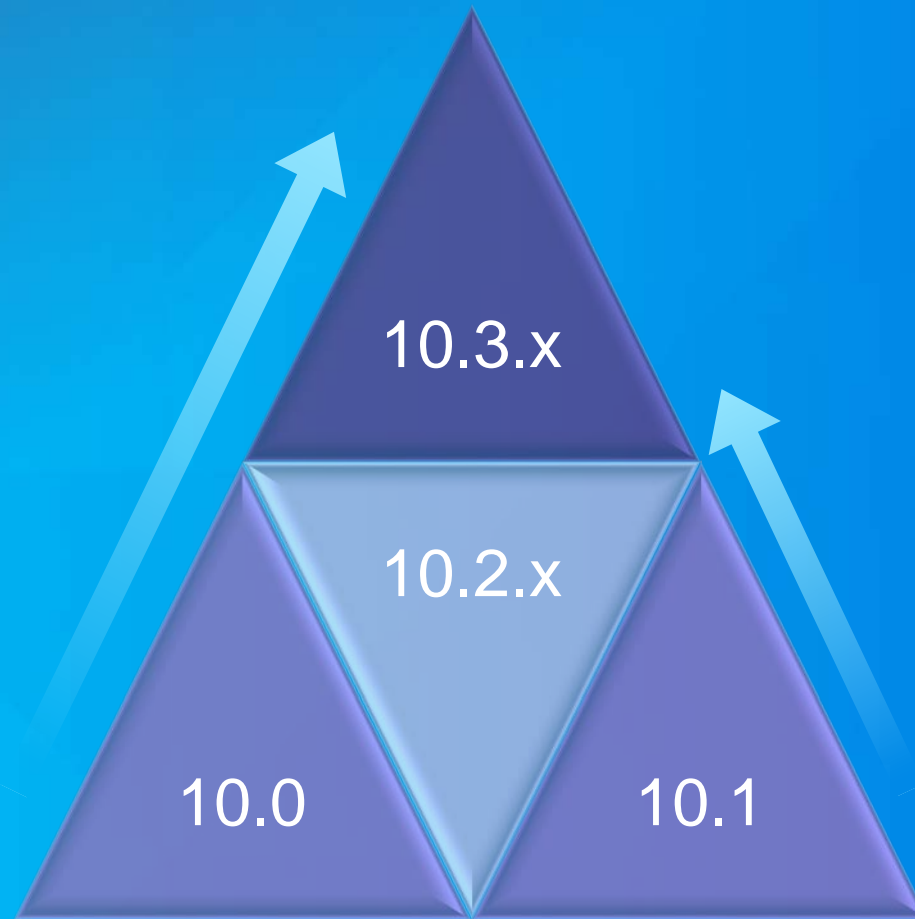


Best Practices for
**Converting workflows from ArcSDE
Command line in ArcGIS 10.3.x**

Melissa Jarman & George Thompson
Esri Support Services

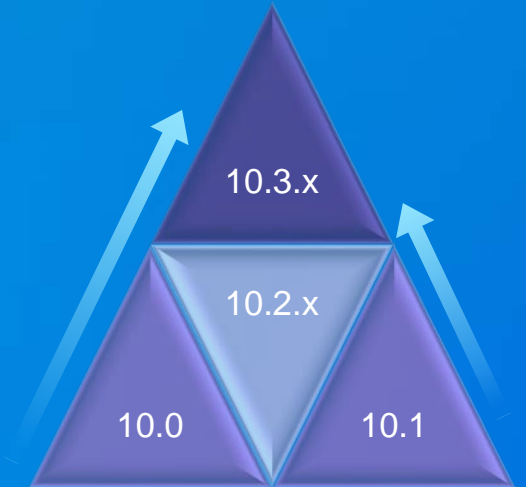
Summary of Session

- History
- Going forward
- New tools
- Why migrate?
- Demos
- Q/A



History

ArcSDE command line



Timeline:

- 10.0 and older versions - Installed with ArcSDE technology
- 10.1 - 10.2.2 separate download
- 10.3 – deprecated



ArcSDE Administration Commands

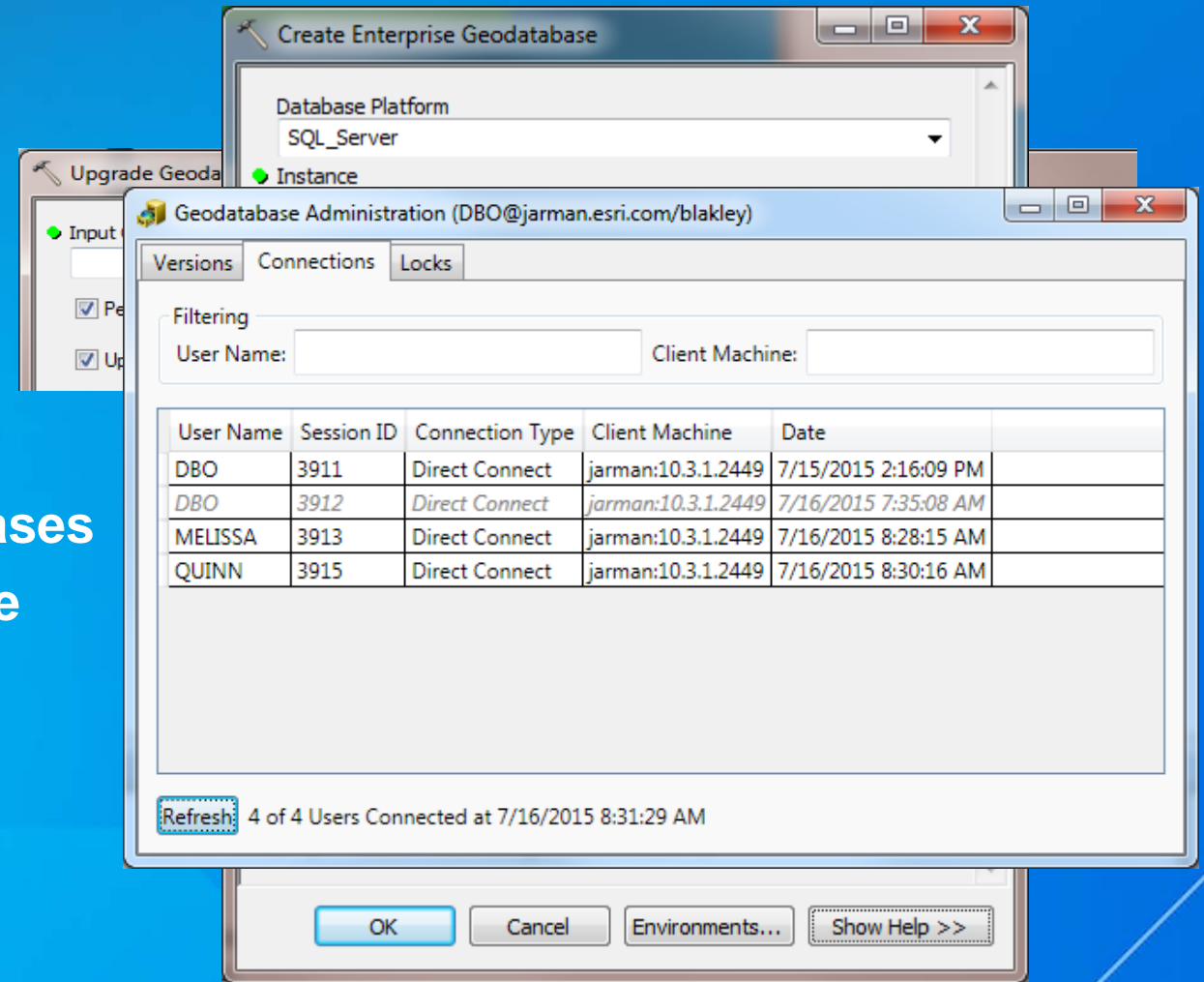
```
sdesetup -o install -d {ORACLE10G|ORACLE11G|SQLSERVER|DB2|DB2ZOS|INFORMIX|POSTGRESQL}
[-H <sde_directory>] [-u <ArcSDE_admin_user>] [-p <ArcSDE_admin_password>]
[-D <database_name>] [-s <datasource>] [-i {<master_geodatabase_service>[:<user_schema>]}:sde]}
[-l <key>] [-N] [-q]

sdesetup -o upgrade -d {ORACLE10G|ORACLE11G|SQLSERVER|DB2|DB2ZOS|INFORMIX|POSTGRESQL}
[-H <sde_directory>] [-u <ArcSDE_admin_user>] [-p <ArcSDE_admin_password>]
[-D <database_name>] [-s <datasource>] [-i <master_geodatabase_service>:<user_schema>]
[-l <key>] [-N] [-q]
```

Going Forward

Migrated functionality into ArcGIS Desktop

- 10.0 – Upgrading geodatabases
- 10.1 – No ArcSDE Post Installation
 - Create/Enable new enterprise geodatabases
 - Update expired ArcGIS for Server license
 - Geodatabase Administration UI tool



ENH-000083167 - Add functionality to warn and update an enterprise geodatabase license before expiration

Before / After

Geoprocessing tool / ArcPy Equivalents

ArcSDE Command Line

sdemon -o info -l users / -o kill

sdemon -o pause

sdetable -o create_mv_view

sdetable -o create_view

sdelayer -o register for native geometry tables



Geoprocessing / ArcPy

Geodatabase Administration tool + ArcPy - ListUsers / DisconnectUser

Database Properties > Connections + ArcPy - AcceptConnections

Register as Versioned

Create Database View tool

Feature Discovery / Query layers



Demo

**Geodatabase Administrator
UI Demonstration with
ArcGIS 10.3.1**

New

Geoprocessing Tools - 10.3

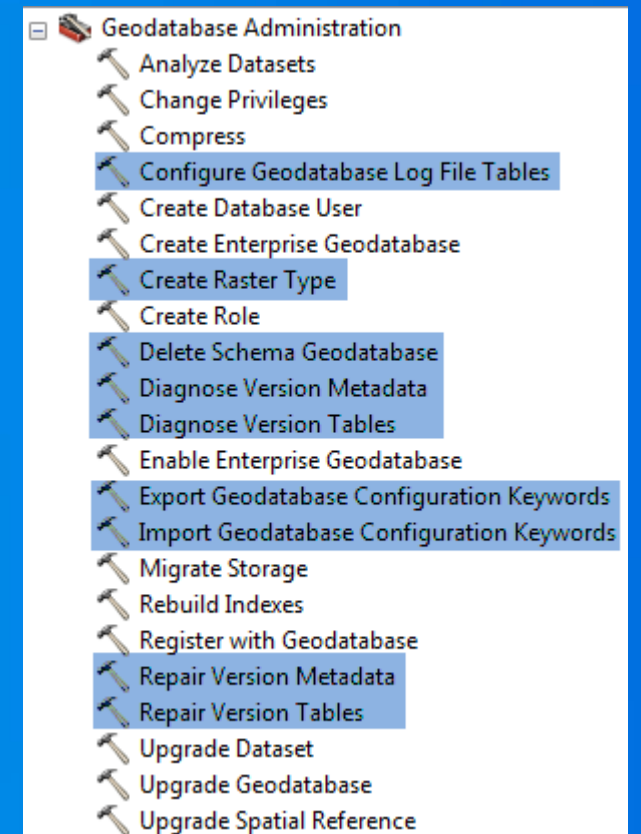
Data Management Toolbox : GDB Administration toolset

- Import/Export Geodatabase Configuration Keywords
- Configure Geodatabase Log File Tables
- Diagnose/Repair Version Metadata
- Diagnose/Repair Version Tables
- Delete Schema Geodatabase
- Create Raster Type

Additional ArcPy functions/tools to come...



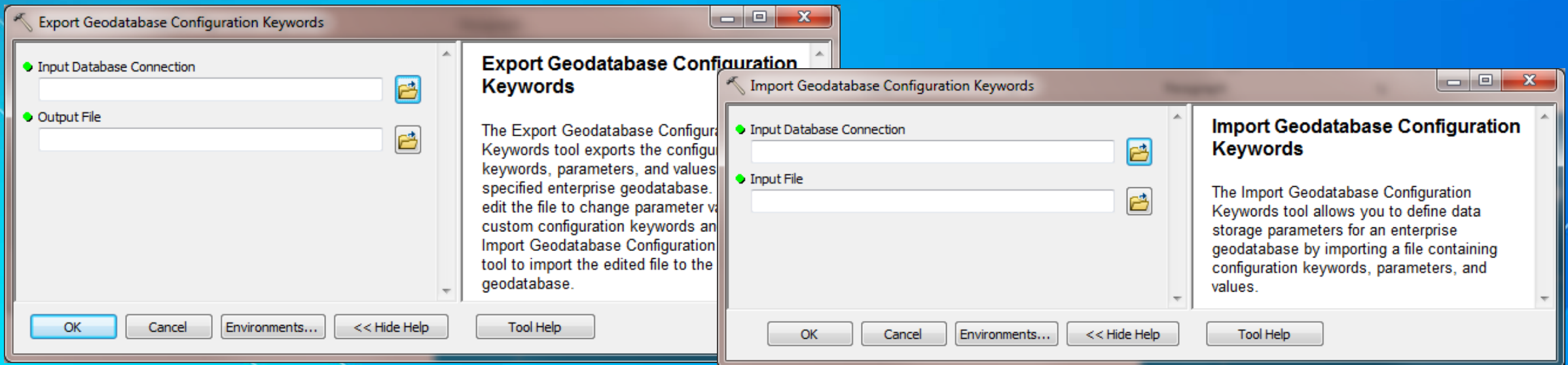
ArcGIS Ideas 



DBTUNE

Import/Export Geodatabase Configuration Keywords

- Replaces sdedbtune -o alter and sdedbtune -o import/export command line
- Similar to sdedbtune -o import/export workflow
 - Editing dbtune.sde file
- **NOTE:** Imports entire KEYWORD -Does not delete existing Keywords/parameters

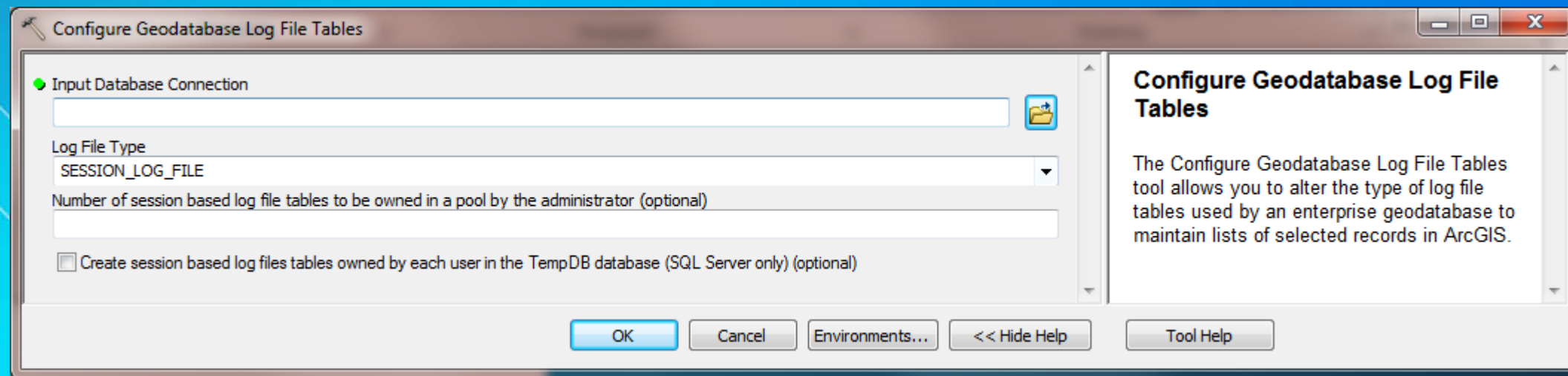


Log Files

Configure Geodatabase Log File Tables

- Replaces sdeconfig -o alter command line for log file configuration changes
- One tool vs. entering multiple commands

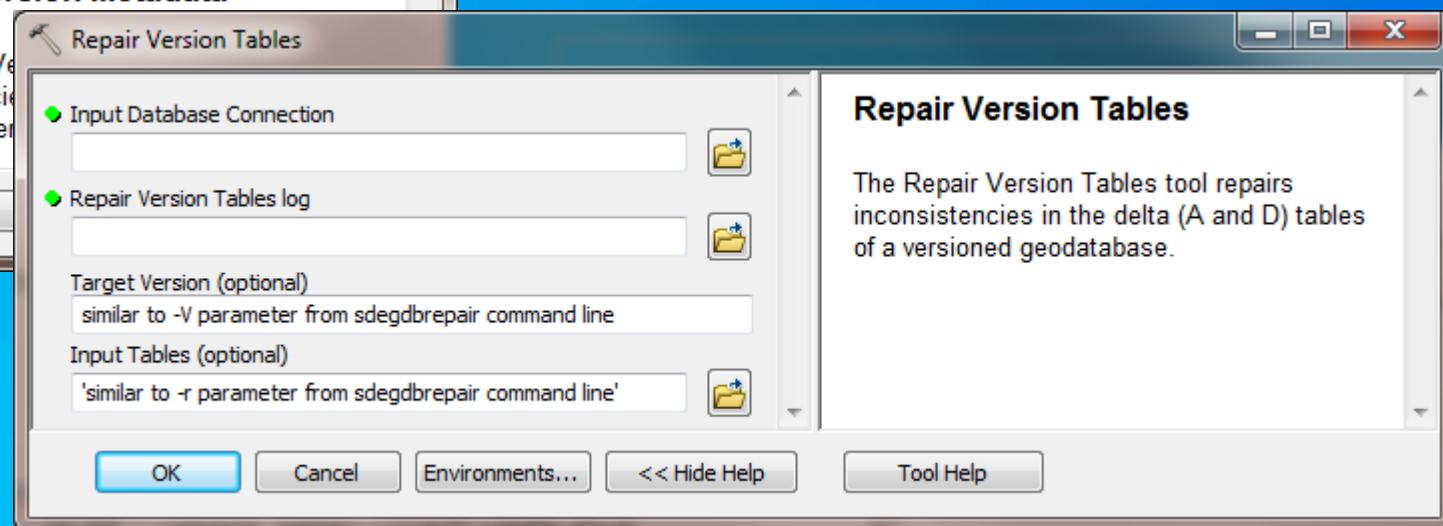
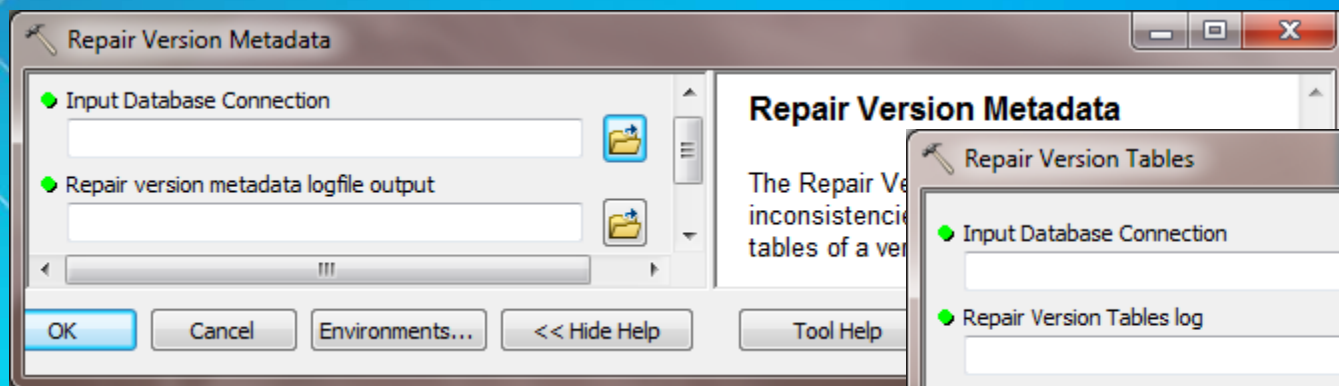
NOTE: Stand-alone log file type is not configurable via this tool



Repair Utility

Diagnose/Repair Version Metadata/Tables

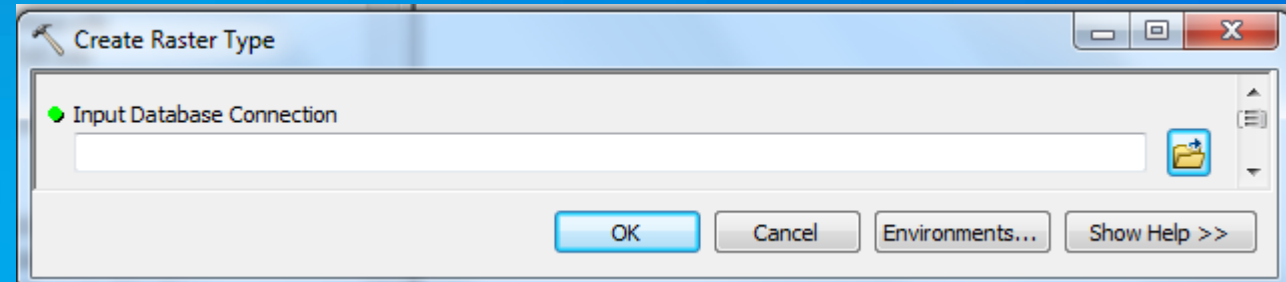
- Replaces the sdegdbrepair command line
- 2 Diagnose tools
- 2 Repair tools
- Writes results to an output log file



Additional Tools

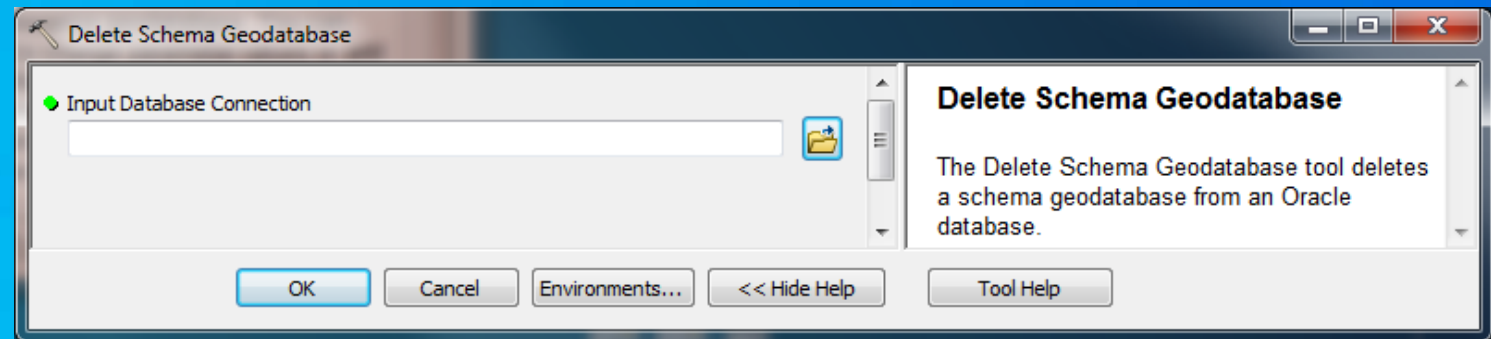
Create Raster Type (Oracle, PostgreSQL, and SQL Server)

- Replaces `sdesetup -o install_st_raster`
- Requires prework prior to running



Delete Schema Geodatabase (Oracle only)

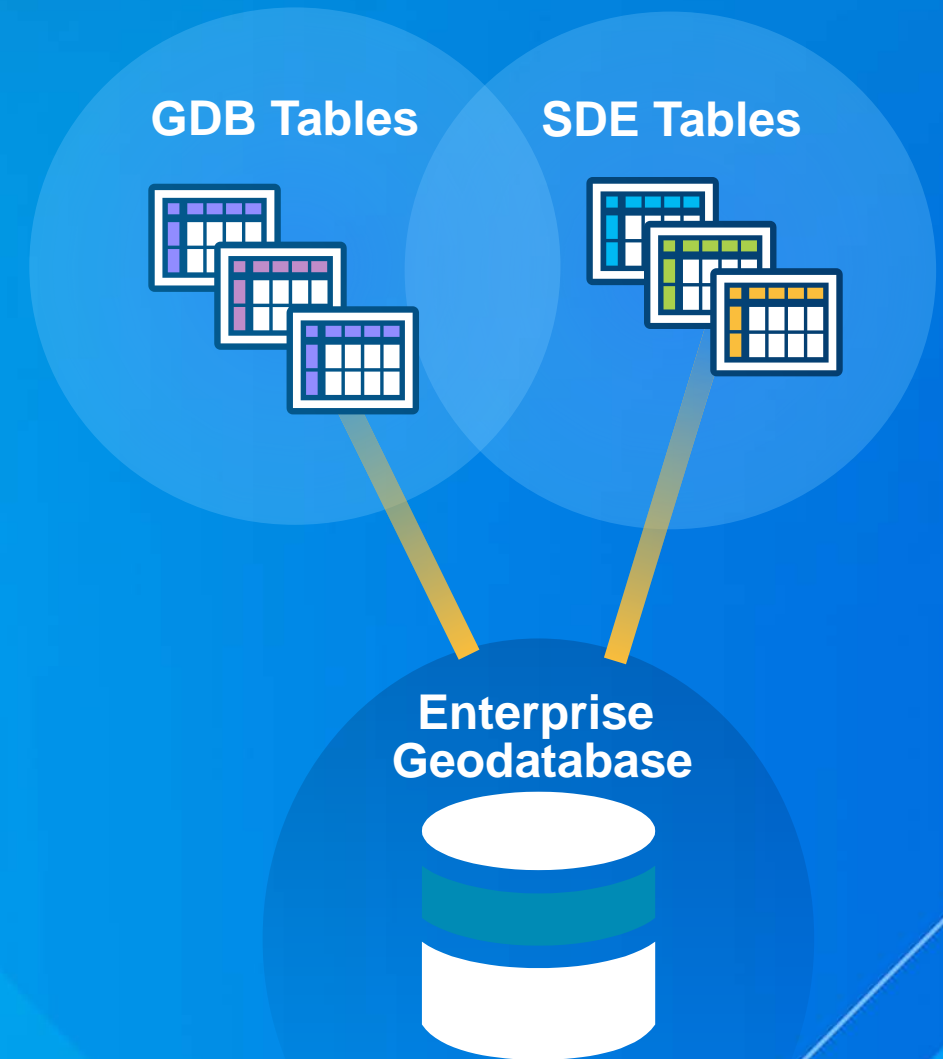
- Replaces the `sdesetup -o delete` command line
- Delete user schema geodatabase for Oracle



Migration

Why migrate to new workflows?

- **Command line**
 - Existed before the geodatabase
 - Partially registered layers
- **Geoprocessing tools**
 - Geodatabase aware
 - Take .sde connection file as input
 - No special syntax
 - Scriptable via ArcPy
- **Deprecation after 10.2.2 release**
 - Supportability against 10.3.x GDB



Demo

**Configure Geodatabase Log
File Tables with ArcGIS 10.3.1**

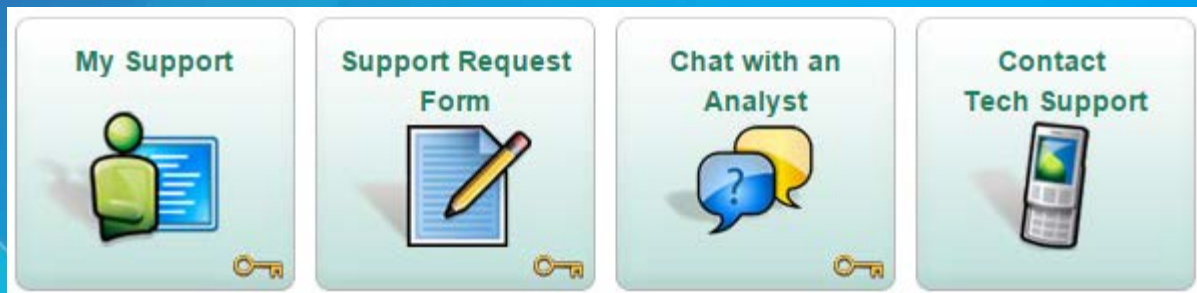
Summary & References:

- **Do This, Not That! – Alternatives to using SDE command line tools**
 - <http://blogs.esri.com/esri/supportcenter/2013/10/04/do-this-not-that-alternatives-to-using-sde-command-line-tools/#comment-1547>
- **FAQ: Can ArcSDE command line tools be used against 10.3 and newer geodatabases?**
 - <http://support.esri.com/de/knowledgebase/techarticles/detail/44300>
- **Administering your Enterprise Geodatabase through Python – Russell Brennan & Jill Penney – 2015 Esri Dev Summit**
 - <http://esriurl.com/PyGDB2015>
- **How to create enterprise geodatabase python scripts that accept connection parameters similar to the sde command line – Forrest Jones**
 - <http://arcg.is/1DkwAy7>

Questions?

Contact Support:

- Support Website: <http://support.esri.com>



- Toll-free Phone: +1-888-377-4575

Contact us:



Melissa Jarman mjarman@esri.com

George Thompson george_thompson@esri.com

Please fill out survey in
Esri Events app!

