



# U.S. Navy IGI&S GeoReadiness Program

## Measuring Success via Application Usage Metrics

Darrell R. Robertson  
NAVFAC GeoReadiness Program Manager

Elena Grillo  
NAVFAC GeoReadiness HQ Support  
Geographic Information Services, Inc.



# IGI&S GeoReadiness Program Mission & Vision



## ***Mission:***

**GeoReadiness provides Navy shore installation missions with geospatial products and services that improve situational awareness to enhance Naval Shore Readiness and strengthen decision-making**

## ***Vision:***

**Promoting geospatial insight to advance the Navy Shore Enterprise**

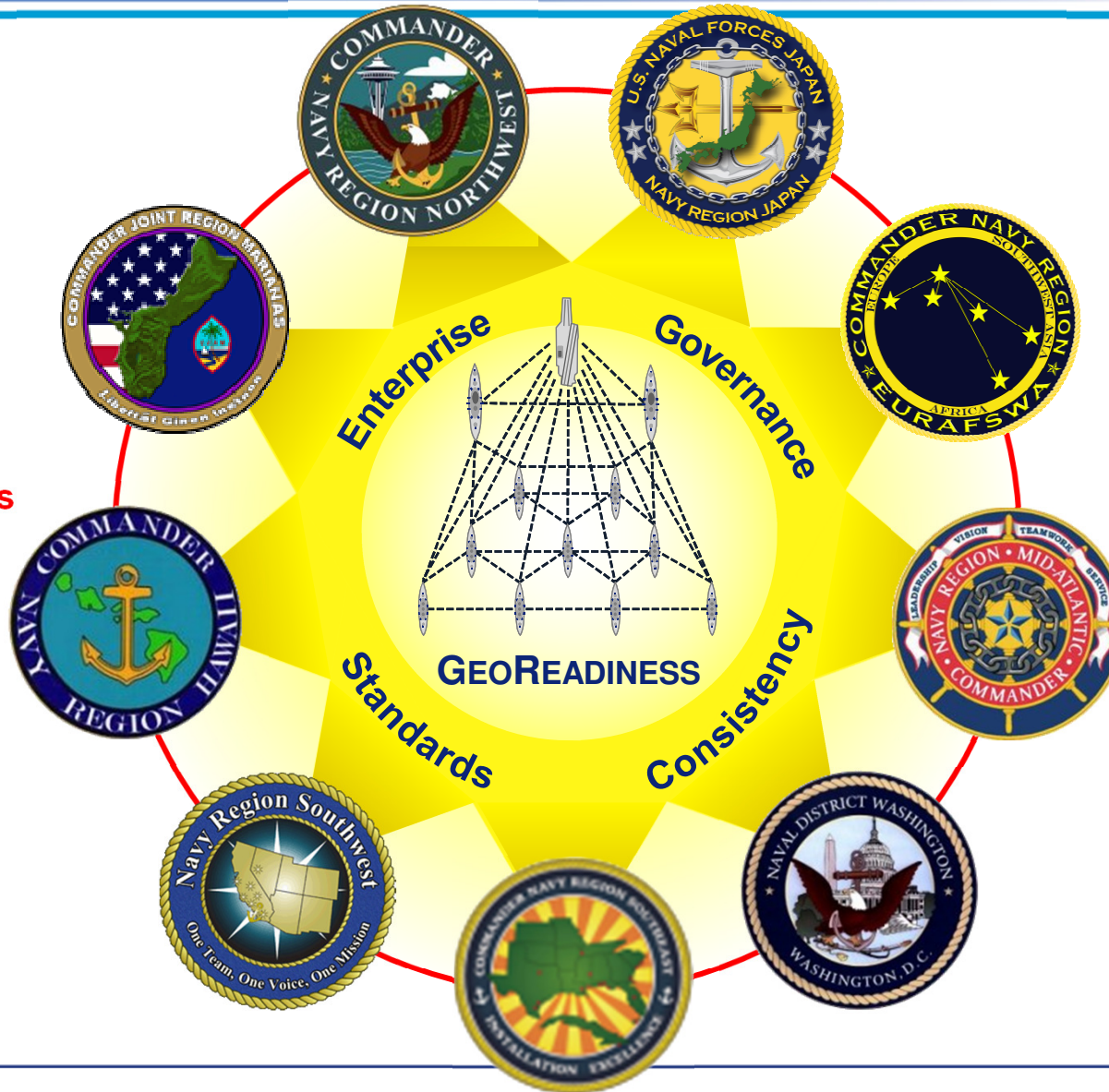




# GeoReadiness Concept: Franchise Model Forward, Engaged, Ready



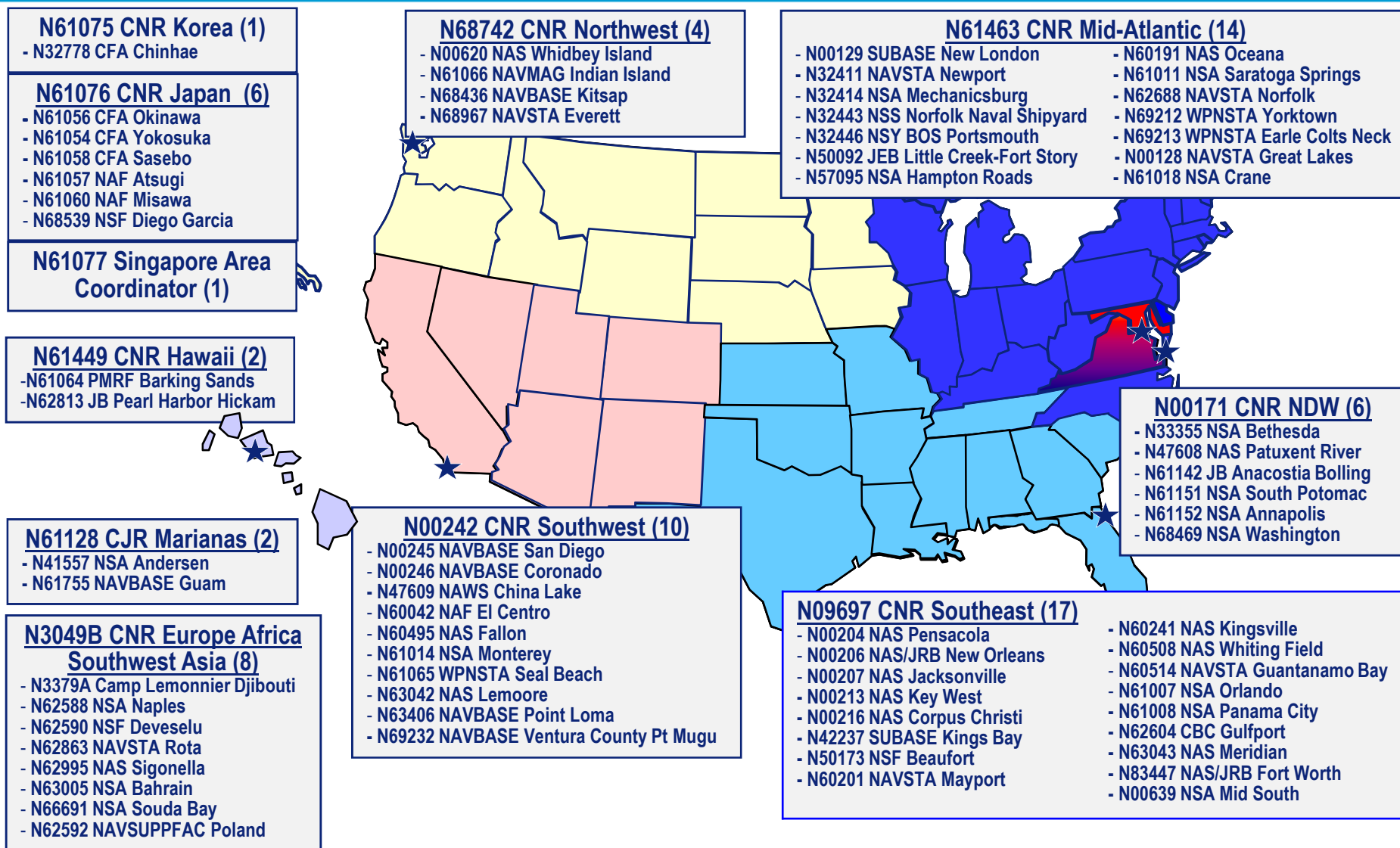
Locally Owned  
and Operated  
Regional Centers



Corporately  
Connected



# CNIC FY16 Navy Shore Bases (71) 11 Regions Supported By 9 FECs







# GeoReadiness Enterprise Overview



## DATA AND PORTAL HOSTING

*Producers/Data Generators*

*Consumer Requirements*



*“Maintain data and publish web services”*

*“Consume web services and gain insight”*



# GeoReadiness Products and Applications



**GeoReadiness Explorer (GRX)**  
User: elena.l.griilo.ctr@navy.mil

Layers Overview Map Buffer Select Deselect Query Spatial Coordinates Measure Markup

**GRX**

FOR OFFICIAL USE OF

**CNIC Worldwide** Installation Summary

INFADS | MAXIMO | CIRCUITS

Installation: NAS PENSACOLA FL Site: - All Sites -

**Land**

Number of Records	101
Total Acres	8,475

**Buildings (other than FH)**

Number of Records	676
Square Feet	11,510,927
Replacement Value	

**Buildings (Family Housing)**

Number of Records	237
Square Feet	1,005,249
Replacement Value	

**Structures**

Number of Records	773
Replacement Value	

**Pavement**

Roads and Streets (SY)	1,130,723
Parking (SY)	1,339,275
Other Pavements (SY)	787,568
Replacement Value	

**Utilities**

Number of Records	327
Replacement Value	

This data is queried directly from the INFADS database.

**Installation Summaries**

**Data Reconciliation Tool**

Region: CNR Southeast  
Installation: NAS PENSACOLA FL  
Site:  All Sites  
 Main Site  
 CORRY STATION  
 MOBILE SHIPYARD  
 OLF BRONSON  
 SAUFLEY FIELD  
Category Codes:  Type 2 Buildings  
 Type 3 Structures  
 Type 4 Utilities

**Data Reconciliation Tool**

Reconciliation Reports: INFADS to GIS, GIS to INFADS, My Saved Queries

Summary Reports: All Feature Classes, HQ Summary Report

User Help Information: Crosswalk Table, Version: 3.2.250.11

**INFADS DRT**

**Summary**

Total number of INFADS Records	1,451
INFADS records with a GIS feature class match	1,171 (81%)
INFADS records without a GIS feature class match	280 (19%)

**Unmatched INFADS Records Details**

Real Property Unit	Facility ID	Facility No.	Facility Name	Region	Installation	Site	Cat. Code	Feature Class	Map Grid Location
15-522	NFA10000063...	260004	HOSPITAL PA...	CNR Southeast	NAS PENSACO...	CORRY STATL...	85110	RoadSection	
82071	NFA10000063...	RVMS	MAIN SITE PA...	CNR Southeast	NAS PENSACO...	Main Site	85110	RoadSection	
80237	NFA10000063...	PAMBWS	PARKING BAS...	CNR Southeast	NAS PENSACO...	Main Site	85210	RoadSection	
80238	NFA10000063...	201672	TAXIWAYS FS...	CNR Southeast	NAS PENSACO...	Main Site	11210	AirfieldSection	
80239	NFA10000063...	201673	TOYWAY-BIT...	CNR Southeast	NAS PENSACO...	Main Site	11650	AirfieldSection	
80240	NFA10000063...	201676	AIRCRAFT PA...	CNR Southeast	NAS PENSACO...	Main Site	11320	AirfieldSection	
80251	NFA10000063...	202278	AIRCRAFT MAL...	CNR Southeast	NAS PENSACO...	Main Site	11340	AirfieldSection	I14
80252	NFA10000063...	202279	AIRCRAFT AC...	CNR Southeast	NAS PENSACO...	Main Site	11340	AirfieldSection	I17
81489	NFA10000063...	7R-25L	RUNWAY 7R-2...	CNR Southeast	NAS PENSACO...	Main Site	11110	AirfieldSection	I12
80042	NFA10000063...	1-19	RUNWAY 1-19...	CNR Southeast	NAS PENSACO...	Main Site	11110	AirfieldSection	I12





# GeoReadiness Explorer



The screenshot displays the GeoReadiness Explorer (GRX) web application interface. At the top, the title bar shows the application name and user information: "GeoReadiness Explorer (GRX)" and "User: elena.l.grillo.ctr@navy.mil". Below the title bar is a toolbar with various navigation and analysis tools such as "Layers", "Overview Map", "Buffer", "Select", "Deselect", "Query", "Spatial", "Coordinates", "Measure", and "Markup". The main map area shows a satellite view of the world with several regions highlighted in different colors: CNRNW (green), CNRSW (red), CNRMA (orange), CNRSE (blue), CNRH (purple), CNREURAFSWA (orange), CNFK (blue), and CNFJ (blue). A red arrow points from the CNRMA region to an inset map showing a detailed view of a port facility. The inset map includes labels for various structures and piers, such as "PIER6", "PIER5", "PIER4", "PIER3", "PIER1", "PIER2", "PIER3A", "PIER3B", "PIER3C", "PIER3D", "PIER3E", "PIER3F", "PIER3G", "PIER3H", "PIER3I", "PIER3J", "PIER3K", "PIER3L", "PIER3M", "PIER3N", "PIER3O", "PIER3P", "PIER3Q", "PIER3R", "PIER3S", "PIER3T", "PIER3U", "PIER3V", "PIER3W", "PIER3X", "PIER3Y", "PIER3Z", "PIER3AA", "PIER3AB", "PIER3AC", "PIER3AD", "PIER3AE", "PIER3AF", "PIER3AG", "PIER3AH", "PIER3AI", "PIER3AJ", "PIER3AK", "PIER3AL", "PIER3AM", "PIER3AN", "PIER3AO", "PIER3AP", "PIER3AQ", "PIER3AR", "PIER3AS", "PIER3AT", "PIER3AU", "PIER3AV", "PIER3AW", "PIER3AX", "PIER3AY", "PIER3AZ", "PIER3BA", "PIER3BB", "PIER3BC", "PIER3BD", "PIER3BE", "PIER3BF", "PIER3BG", "PIER3BH", "PIER3BI", "PIER3BJ", "PIER3BK", "PIER3BL", "PIER3BM", "PIER3BN", "PIER3BO", "PIER3BP", "PIER3BQ", "PIER3BR", "PIER3BS", "PIER3BT", "PIER3BU", "PIER3BV", "PIER3BW", "PIER3BX", "PIER3BY", "PIER3BZ", "PIER3CA", "PIER3CB", "PIER3CC", "PIER3CD", "PIER3CE", "PIER3CF", "PIER3CG", "PIER3CH", "PIER3CI", "PIER3CJ", "PIER3CK", "PIER3CL", "PIER3CM", "PIER3CN", "PIER3CO", "PIER3CP", "PIER3CQ", "PIER3CR", "PIER3CS", "PIER3CT", "PIER3CU", "PIER3CV", "PIER3CW", "PIER3CX", "PIER3CY", "PIER3CZ", "PIER3DA", "PIER3DB", "PIER3DC", "PIER3DD", "PIER3DE", "PIER3DF", "PIER3DG", "PIER3DH", "PIER3DI", "PIER3DJ", "PIER3DK", "PIER3DL", "PIER3DM", "PIER3DN", "PIER3DO", "PIER3DP", "PIER3DQ", "PIER3DR", "PIER3DS", "PIER3DT", "PIER3DU", "PIER3DV", "PIER3DW", "PIER3DX", "PIER3DY", "PIER3DZ", "PIER3EA", "PIER3EB", "PIER3EC", "PIER3ED", "PIER3EE", "PIER3EF", "PIER3EG", "PIER3EH", "PIER3EI", "PIER3EJ", "PIER3EK", "PIER3EL", "PIER3EM", "PIER3EN", "PIER3EO", "PIER3EP", "PIER3EQ", "PIER3ER", "PIER3ES", "PIER3ET", "PIER3EU", "PIER3EV", "PIER3EW", "PIER3EX", "PIER3EY", "PIER3EZ", "PIER3FA", "PIER3FB", "PIER3FC", "PIER3FD", "PIER3FE", "PIER3FF", "PIER3FG", "PIER3FH", "PIER3FI", "PIER3FJ", "PIER3FK", "PIER3FL", "PIER3FM", "PIER3FN", "PIER3FO", "PIER3FP", "PIER3FQ", "PIER3FR", "PIER3FS", "PIER3FT", "PIER3FU", "PIER3FV", "PIER3FW", "PIER3FX", "PIER3FY", "PIER3FZ", "PIER3GA", "PIER3GB", "PIER3GC", "PIER3GD", "PIER3GE", "PIER3GF", "PIER3GG", "PIER3GH", "PIER3GI", "PIER3GJ", "PIER3GK", "PIER3GL", "PIER3GM", "PIER3GN", "PIER3GO", "PIER3GP", "PIER3GQ", "PIER3GR", "PIER3GS", "PIER3GT", "PIER3GU", "PIER3GV", "PIER3GW", "PIER3GX", "PIER3GY", "PIER3GZ", "PIER3HA", "PIER3HB", "PIER3HC", "PIER3HD", "PIER3HE", "PIER3HF", "PIER3HG", "PIER3HH", "PIER3HI", "PIER3HJ", "PIER3HK", "PIER3HL", "PIER3HM", "PIER3HN", "PIER3HO", "PIER3HP", "PIER3HQ", "PIER3HR", "PIER3HS", "PIER3HT", "PIER3HU", "PIER3HV", "PIER3HW", "PIER3HX", "PIER3HY", "PIER3HZ", "PIER3IA", "PIER3IB", "PIER3IC", "PIER3ID", "PIER3IE", "PIER3IF", "PIER3IG", "PIER3IH", "PIER3IJ", "PIER3IK", "PIER3IL", "PIER3IM", "PIER3IN", "PIER3IO", "PIER3IP", "PIER3IQ", "PIER3IR", "PIER3IS", "PIER3IT", "PIER3IU", "PIER3IV", "PIER3IW", "PIER3IX", "PIER3IY", "PIER3IZ", "PIER3JA", "PIER3JB", "PIER3JC", "PIER3JD", "PIER3JE", "PIER3JF", "PIER3JG", "PIER3JH", "PIER3JI", "PIER3JJ", "PIER3JK", "PIER3JL", "PIER3JM", "PIER3JN", "PIER3JO", "PIER3JP", "PIER3JQ", "PIER3JR", "PIER3JS", "PIER3JT", "PIER3JU", "PIER3JV", "PIER3JW", "PIER3JX", "PIER3JY", "PIER3JZ", "PIER3KA", "PIER3KB", "PIER3KC", "PIER3KD", "PIER3KE", "PIER3KF", "PIER3KG", "PIER3KH", "PIER3KI", "PIER3KJ", "PIER3KK", "PIER3KL", "PIER3KM", "PIER3KN", "PIER3KO", "PIER3KP", "PIER3KQ", "PIER3KR", "PIER3KS", "PIER3KT", "PIER3KU", "PIER3KV", "PIER3KW", "PIER3KX", "PIER3KY", "PIER3KZ", "PIER3LA", "PIER3LB", "PIER3LC", "PIER3LD", "PIER3LE", "PIER3LF", "PIER3LG", "PIER3LH", "PIER3LI", "PIER3LJ", "PIER3LK", "PIER3LL", "PIER3LM", "PIER3LN", "PIER3LO", "PIER3LP", "PIER3LQ", "PIER3LR", "PIER3LS", "PIER3LT", "PIER3LU", "PIER3LV", "PIER3LW", "PIER3LX", "PIER3LY", "PIER3LZ", "PIER3MA", "PIER3MB", "PIER3MC", "PIER3MD", "PIER3ME", "PIER3MF", "PIER3MG", "PIER3MH", "PIER3MI", "PIER3MJ", "PIER3MK", "PIER3ML", "PIER3MN", "PIER3MO", "PIER3MP", "PIER3MQ", "PIER3MR", "PIER3MS", "PIER3MT", "PIER3MU", "PIER3MV", "PIER3MW", "PIER3MX", "PIER3MY", "PIER3MZ", "PIER3NA", "PIER3NB", "PIER3NC", "PIER3ND", "PIER3NE", "PIER3NF", "PIER3NG", "PIER3NH", "PIER3NI", "PIER3NJ", "PIER3NK", "PIER3NL", "PIER3NM", "PIER3NN", "PIER3NO", "PIER3NP", "PIER3NQ", "PIER3NR", "PIER3NS", "PIER3NT", "PIER3NU", "PIER3NV", "PIER3NW", "PIER3NX", "PIER3NY", "PIER3NZ", "PIER3OA", "PIER3OB", "PIER3OC", "PIER3OD", "PIER3OE", "PIER3OF", "PIER3OG", "PIER3OH", "PIER3OI", "PIER3OJ", "PIER3OK", "PIER3OL", "PIER3OM", "PIER3ON", "PIER3OO", "PIER3OP", "PIER3OQ", "PIER3OR", "PIER3OS", "PIER3OT", "PIER3OU", "PIER3OV", "PIER3OW", "PIER3OX", "PIER3OY", "PIER3OZ", "PIER3PA", "PIER3PB", "PIER3PC", "PIER3PD", "PIER3PE", "PIER3PF", "PIER3PG", "PIER3PH", "PIER3PI", "PIER3PJ", "PIER3PK", "PIER3PL", "PIER3PM", "PIER3PN", "PIER3PO", "PIER3PP", "PIER3PQ", "PIER3PR", "PIER3PS", "PIER3PT", "PIER3PU", "PIER3PV", "PIER3PW", "PIER3PX", "PIER3PY", "PIER3PZ", "PIER3QA", "PIER3QB", "PIER3QC", "PIER3QD", "PIER3QE", "PIER3QF", "PIER3QG", "PIER3QH", "PIER3QI", "PIER3QJ", "PIER3QK", "PIER3QL", "PIER3QM", "PIER3QN", "PIER3QO", "PIER3QP", "PIER3QQ", "PIER3QR", "PIER3QS", "PIER3QT", "PIER3QU", "PIER3QV", "PIER3QW", "PIER3QX", "PIER3QY", "PIER3QZ", "PIER3RA", "PIER3RB", "PIER3RC", "PIER3RD", "PIER3RE", "PIER3RF", "PIER3RG", "PIER3RH", "PIER3RI", "PIER3RJ", "PIER3RK", "PIER3RL", "PIER3RM", "PIER3RN", "PIER3RO", "PIER3RP", "PIER3RQ", "PIER3RR", "PIER3RS", "PIER3RT", "PIER3RU", "PIER3RV", "PIER3RW", "PIER3RX", "PIER3RY", "PIER3RZ", "PIER3SA", "PIER3SB", "PIER3SC", "PIER3SD", "PIER3SE", "PIER3SF", "PIER3SG", "PIER3SH", "PIER3SI", "PIER3SJ", "PIER3SK", "PIER3SL", "PIER3SM", "PIER3SN", "PIER3SO", "PIER3SP", "PIER3SQ", "PIER3SR", "PIER3SS", "PIER3ST", "PIER3SU", "PIER3SV", "PIER3SW", "PIER3SX", "PIER3SY", "PIER3SZ", "PIER3TA", "PIER3TB", "PIER3TC", "PIER3TD", "PIER3TE", "PIER3TF", "PIER3TG", "PIER3TH", "PIER3TI", "PIER3TJ", "PIER3TK", "PIER3TL", "PIER3TM", "PIER3TN", "PIER3TO", "PIER3TP", "PIER3TQ", "PIER3TR", "PIER3TS", "PIER3TT", "PIER3TU", "PIER3TV", "PIER3TW", "PIER3TX", "PIER3TY", "PIER3TZ", "PIER3UA", "PIER3UB", "PIER3UC", "PIER3UD", "PIER3UE", "PIER3UF", "PIER3UG", "PIER3UH", "PIER3UI", "PIER3UJ", "PIER3UK", "PIER3UL", "PIER3UM", "PIER3UN", "PIER3UO", "PIER3UP", "PIER3UQ", "PIER3UR", "PIER3US", "PIER3UT", "PIER3UU", "PIER3UV", "PIER3UW", "PIER3UX", "PIER3UY", "PIER3UZ", "PIER3VA", "PIER3VB", "PIER3VC", "PIER3VD", "PIER3VE", "PIER3VF", "PIER3VG", "PIER3VH", "PIER3VI", "PIER3VJ", "PIER3VK", "PIER3VL", "PIER3VM", "PIER3VN", "PIER3VO", "PIER3VP", "PIER3VQ", "PIER3VR", "PIER3VS", "PIER3VT", "PIER3VU", "PIER3VV", "PIER3VW", "PIER3VX", "PIER3VY", "PIER3VZ", "PIER3WA", "PIER3WB", "PIER3WC", "PIER3WD", "PIER3WE", "PIER3WF", "PIER3WG", "PIER3WH", "PIER3WI", "PIER3WJ", "PIER3WK", "PIER3WL", "PIER3WM", "PIER3WN", "PIER3WO", "PIER3WP", "PIER3WQ", "PIER3WR", "PIER3WS", "PIER3WT", "PIER3WU", "PIER3WV", "PIER3WW", "PIER3WX", "PIER3WY", "PIER3WZ", "PIER3XA", "PIER3XB", "PIER3XC", "PIER3XD", "PIER3XE", "PIER3XF", "PIER3XG", "PIER3XH", "PIER3XI", "PIER3XJ", "PIER3XK", "PIER3XL", "PIER3XM", "PIER3XN", "PIER3XO", "PIER3XP", "PIER3XQ", "PIER3XR", "PIER3XS", "PIER3XT", "PIER3XU", "PIER3XV", "PIER3XW", "PIER3XX", "PIER3XY", "PIER3XZ", "PIER3YA", "PIER3YB", "PIER3YC", "PIER3YD", "PIER3YE", "PIER3YF", "PIER3YG", "PIER3YH", "PIER3YI", "PIER3YJ", "PIER3YK", "PIER3YL", "PIER3YM", "PIER3YN", "PIER3YO", "PIER3YP", "PIER3YQ", "PIER3YR", "PIER3YS", "PIER3YT", "PIER3YU", "PIER3YV", "PIER3YW", "PIER3YX", "PIER3YY", "PIER3YZ", "PIER3ZA", "PIER3ZB", "PIER3ZC", "PIER3ZD", "PIER3ZE", "PIER3ZF", "PIER3ZG", "PIER3ZH", "PIER3ZI", "PIER3ZJ", "PIER3ZK", "PIER3ZL", "PIER3ZM", "PIER3ZN", "PIER3ZO", "PIER3ZP", "PIER3ZQ", "PIER3ZR", "PIER3ZS", "PIER3ZT", "PIER3ZU", "PIER3ZV", "PIER3ZW", "PIER3ZX", "PIER3ZY", "PIER3ZZ".

Discover More, Search Less – GRX

- A seamless view of worldwide Navy geospatial assets.
- Access to multiple Navy business systems
- Ability to overlay external data and web based map services.



# What is Success?



- **Definition:**
  - ‘The accomplishment of an aim or purpose.’
- **What is our Purpose?**
  - ‘Improve Situational Awareness and Strengthen Decision Making’
- **What defines success for GeoReadiness:**
  - Discoverability and Availability
  - Data Accuracy and Currency
  - Business System Interoperability
  - Diverse User Base
  - Extensive User Base
  - Satisfied User Base



"It is literally true that you can succeed best and quickest by helping others to succeed."

Napoleon Hill







# GeoReadiness Application Usage Metrics



## Usage Measured in Two Ways

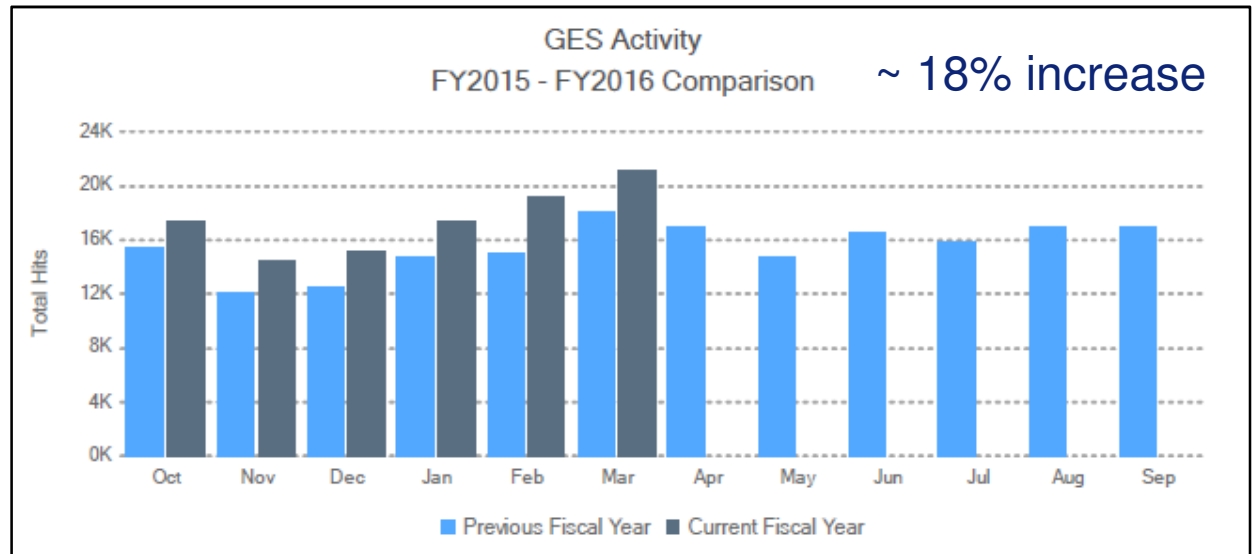
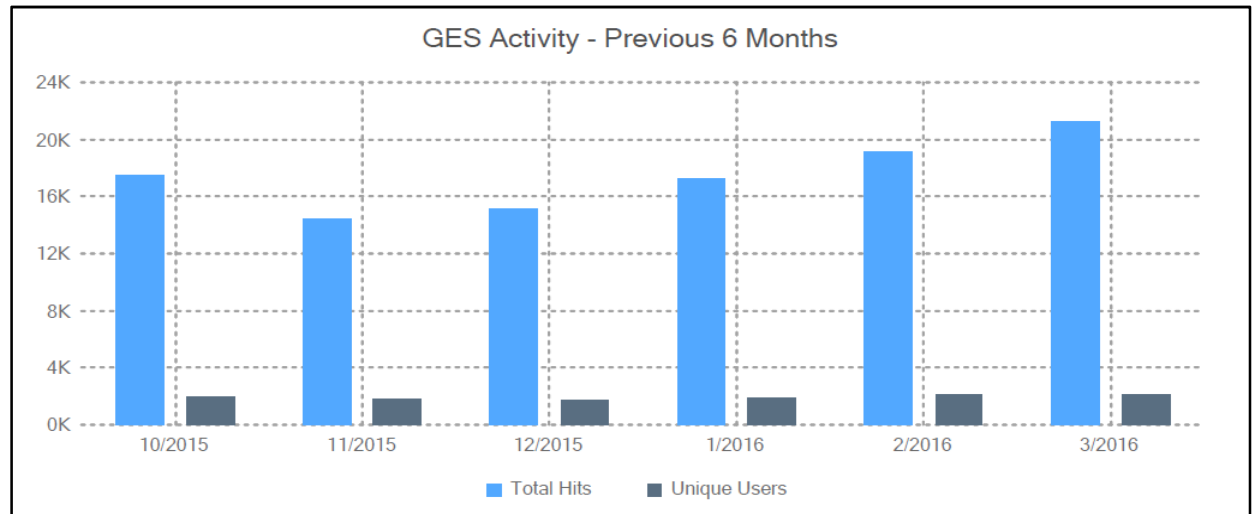
1. Number of application hits
2. Number of unique users

### User-Consumed Applications and Tools:

- ★ GeoReadiness Explorer
- ★ iNFADS Data Reconciliation Tool
- CIRCUITS Installation Summary
- ★ iNFADS Installation Summary
- MAXIMO Installation Summary
- Space Search
- Media Manager
- Regional Base Maps
- GeoReadiness Portal

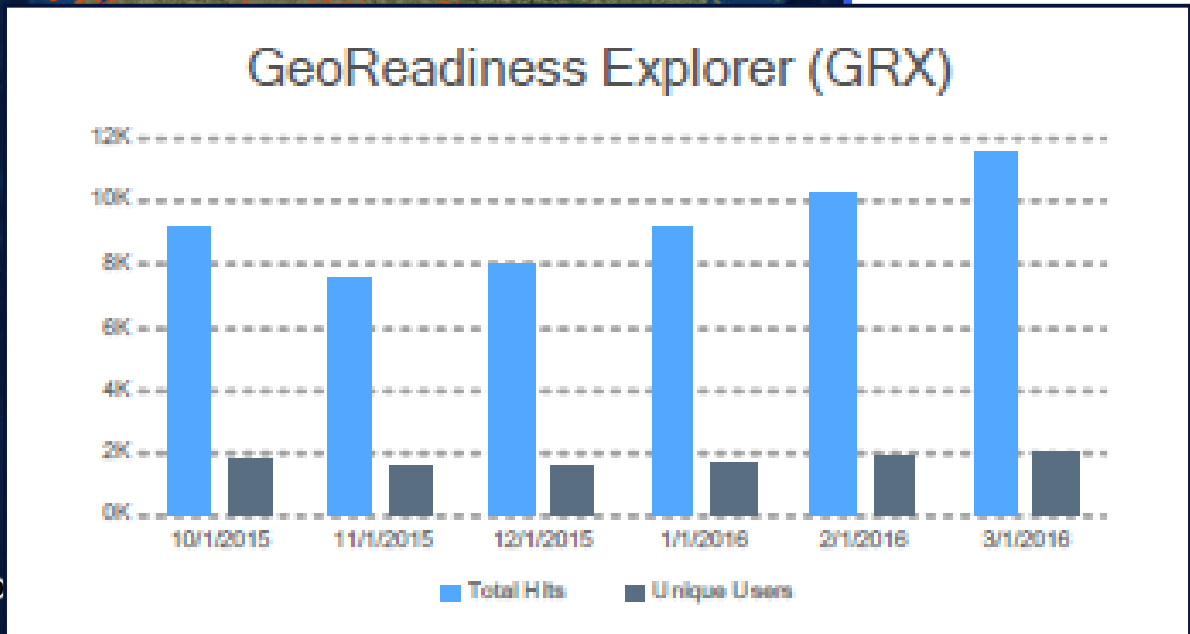
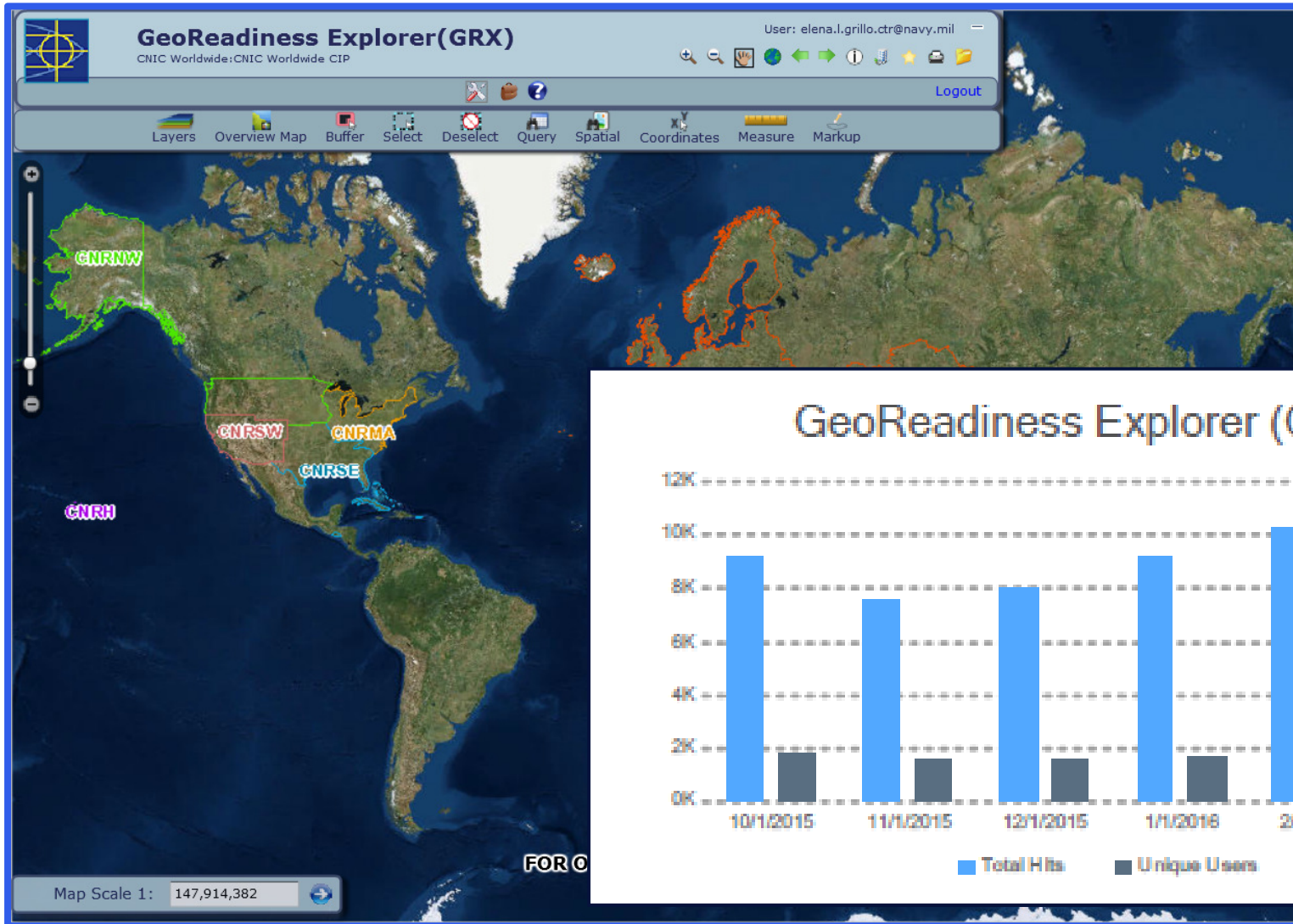
### Administrative Tools:

- GeoReadiness Explorer Builder
- User Account Requests
- Regional User Administration





# GeoReadiness Explorer Usage FY 2016 (Q1 & Q2)





# Data Reconciliation Tool Usage FY 2016 (Q1 & Q2)



## Data Reconciliation Tool

Logout

Region: CNR Southeast

Installation: NAS PENSACOLA FL

Site:
 

- All Sites
- Main Site
- CORRY STATION
- MOBILE SHIPYARD
- OLF BRONSON
- SAUFLEY FIELD

Category Codes:
 

- Type 2 Buildings
- Type 3 Structures
- Type 4 Utilities

Select/Deselect All

### iNFADS Reconciliation (DRT)

Month	Total Hits	Unique Users
10/2015	255	75
11/2015	175	45
12/2015	265	60
1/2016	305	80
2/2016	255	75
3/2016	395	75

#### Data Reconciliation Tool

**Reconciliation Reports**

iNFADS to GIS

GIS to iNFADS

My Saved Queries

**Summary Reports**

All Feature Classes

HQ Summary Report

**User Help Information**

Crosswalk Table

Crosswalk as of: 05/14/2016

Version: 3.2.250.11

#### Summary

Total number of iNFADS Records  
iNFADS records with a GIS feature  
iNFADS records without a GIS feature

**Unmatched iNFADS Records Details**
**Matched iNFADS Records Details**

Real Property Uni	Facility ID	Facility No.	Facility Name	Region	Installation	Site	Cat. Code	Feature Class	Map Grid Locatio
154522	NFA10000063...	260004	HOSPITAL PA...	CNR Southeast	NAS PENSACO...	CORRY STATL...	85110	RoadSection	
82071	NFA10000063...	RWMS	MAIN SITE PA...	CNR Southeast	NAS PENSACO...	Main Site	85110	RoadSection	
80237	NFA10000063...	PAMBMS	PARKING BAS...	CNR Southeast	NAS PENSACO...	Main Site	85210	RoadSection	
80238	NFA10000063...	201672	TAXIWAYS FS...	CNR Southeast	NAS PENSACO...	Main Site	11210	AirfieldSection	
80239	NFA10000063...	201673	TOWWAY-BIT...	CNR Southeast	NAS PENSACO...	Main Site	11650	AirfieldSection	
80240	NFA10000063...	201676	AIRCRAFT PA...	CNR Southeast	NAS PENSACO...	Main Site	11320	AirfieldSection	
80251	NFA10000063...	202278	AIRCRAFT MAI...	CNR Southeast	NAS PENSACO...	Main Site	11340	AirfieldSection	I14
80252	NFA10000063...	202279	AIRCRAFT AC...	CNR Southeast	NAS PENSACO...	Main Site	11340	AirfieldSection	I17
81489	NFA10000063...	7R-25L	RUNWAY 7R-2...	CNR Southeast	NAS PENSACO...	Main Site	11110	AirfieldSection	I12
80042	NFA10000063...	1-19	RUNWAY 1-19...	CNR Southeast	NAS PENSACO...	Main Site	11110	AirfieldSection	I12





# Installation Summary Tool Usage FY 2016 (Q2)



**CNIC Worldwide** | Installation Summary | [Logout](#)

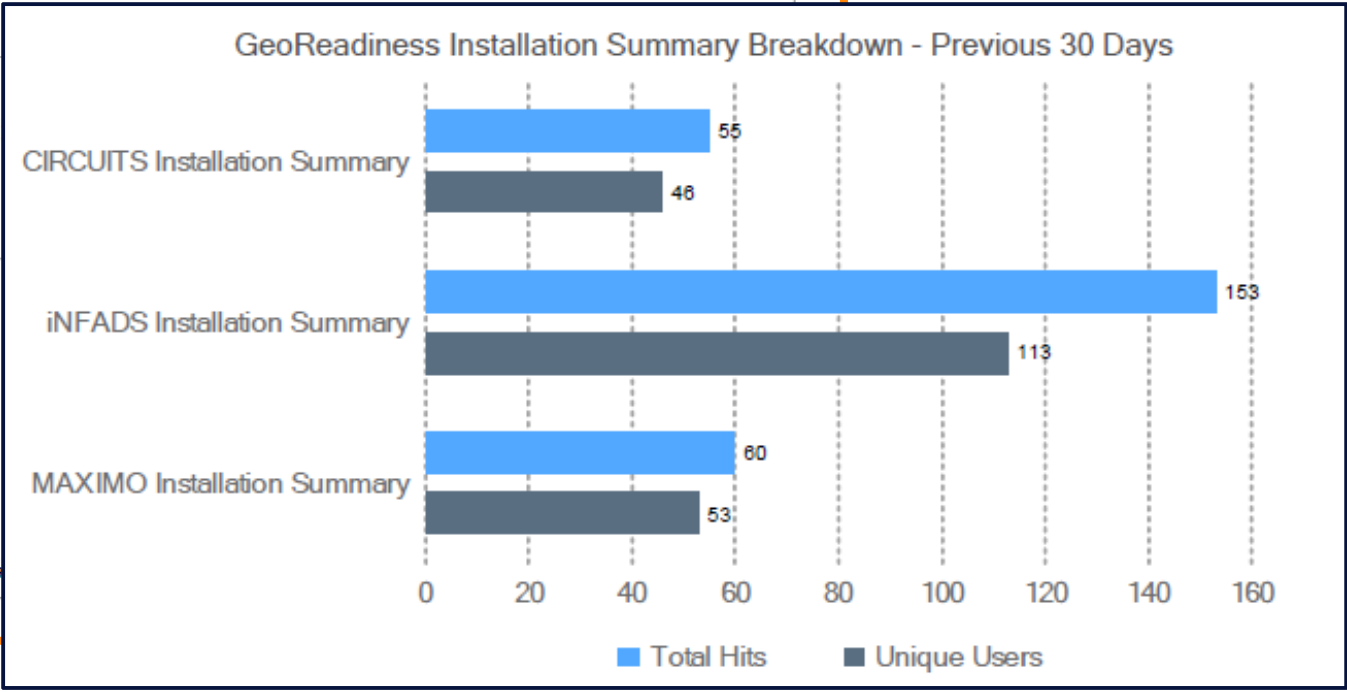
INFADS | MAXIMO | CIRCUIITS

Installation:  Site:

[Info](#) [Print](#) [Export](#)

Category	Number of Records	Total Acres	Replacement Value
<b>Land</b>	101	8,475	
<b>Structures</b>	773		
<b>Buildings (other than FH)</b>			
<b>Buildings (Family Housing)</b>			

*This data is queried directly from the iNFADS data*





## Moving Forward... Enterprise Metrics to Consider



- **Quantify Demand from User Communities**  
*(Diverse & Extensive User Base)*
- **Define and report data accuracy**  
*(Data Accuracy & Currency)*
- **Measure User Satisfaction**  
*(Satisfied User Base)*
- **Examine Tool Access from within GRX**  
*(Business System Interoperability)*
- **Monitor External CIP Service Usage**  
*(Diverse & Extensive User Base)*
- **Measure Server Capacity and User Load**  
*(Discoverability & Availability)*



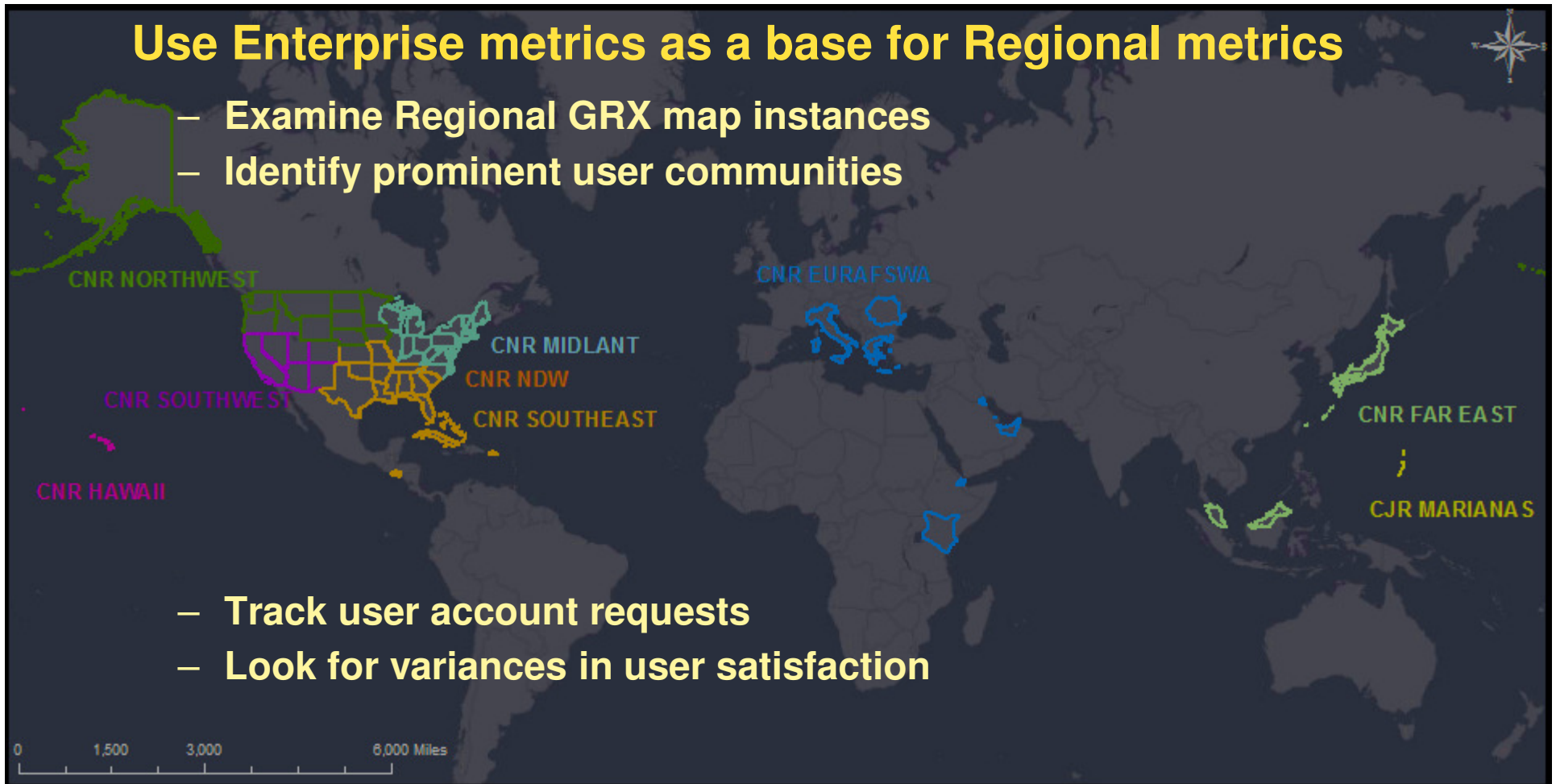


# Refining the Scope Taking it to the Regional Level



## Use Enterprise metrics as a base for Regional metrics

- Examine Regional GRX map instances
- Identify prominent user communities



- Track user account requests
- Look for variances in user satisfaction





## What Are The Benefits?



- Show Program Value
- Measure Program Success
- Ability to Explore Usage Trends
- Understand Target Audiences and Training Needs
- Ensure Optimal Technical Architecture





# QUESTIONS?



## Points Of Contact

### **Darrell Robertson**

USN IGI&S GeoReadiness Program Manager  
[darrell.r.robertson@navy.mil](mailto:darrell.r.robertson@navy.mil)

### **Paul Van Zuyle**

NITC GES Project Manager (COR)  
[paul.vanzuyle@navy.mil](mailto:paul.vanzuyle@navy.mil)

### **Elena Grillo**

Geographic Information Services, Inc.  
GeoReadiness Program - HQ Support  
[Elena.grillo@gisinc.com](mailto:Elena.grillo@gisinc.com)

