



Air Force Global Strike Command

Emergency Management

UC

Joel Bennett

GeoBase Software Engineer



Sam Bushell

GeoBase Administrator



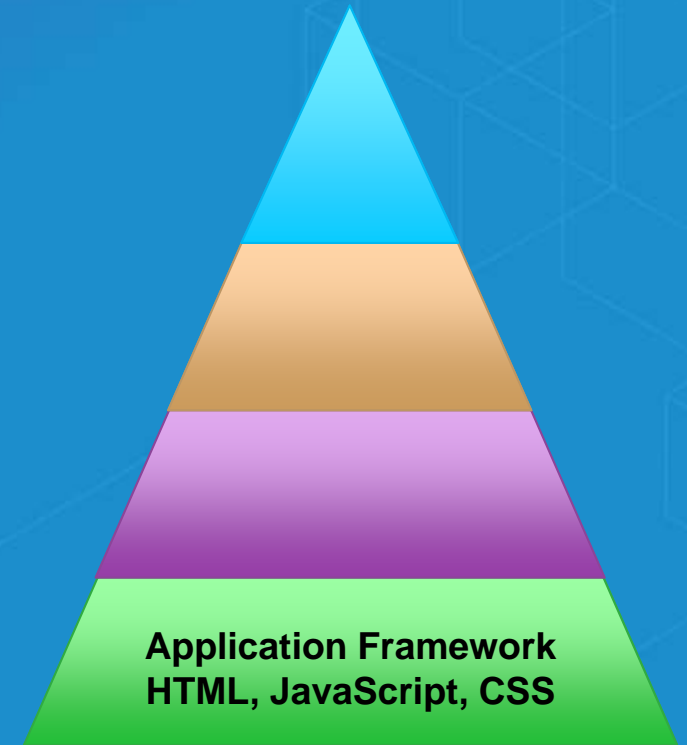


Sustainable - Enterprise-Level - Web GIS



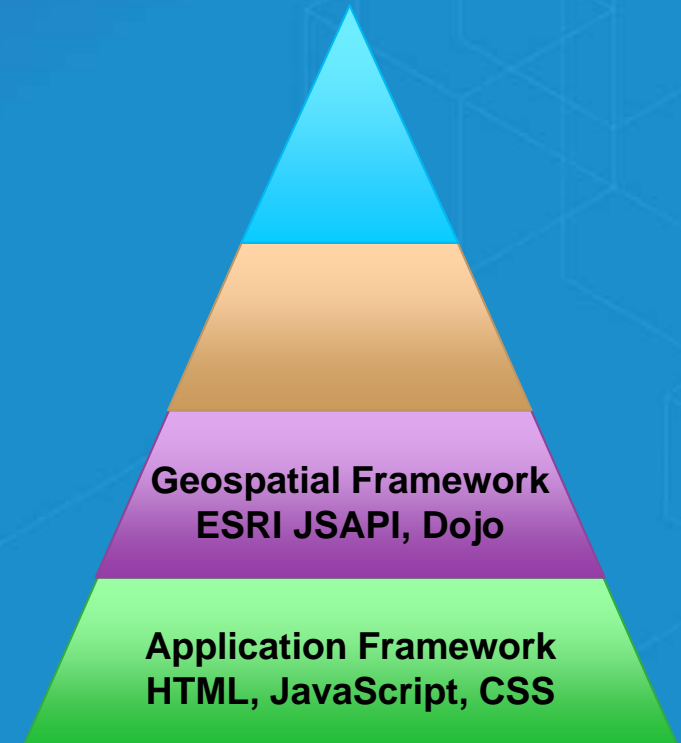


- Increase Efficiency by Eliminating Redundancy



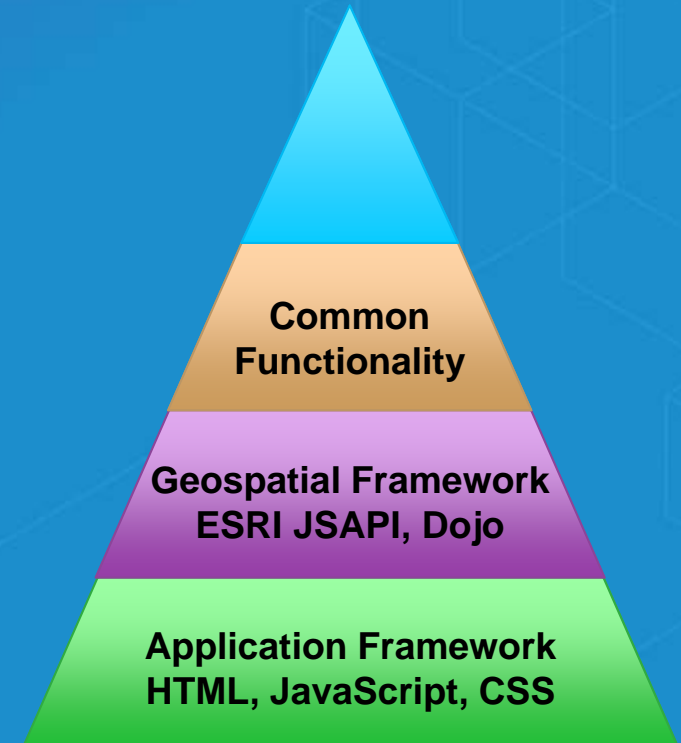


- In tune with the industry
- Increase Efficiency by Eliminating Redundancy



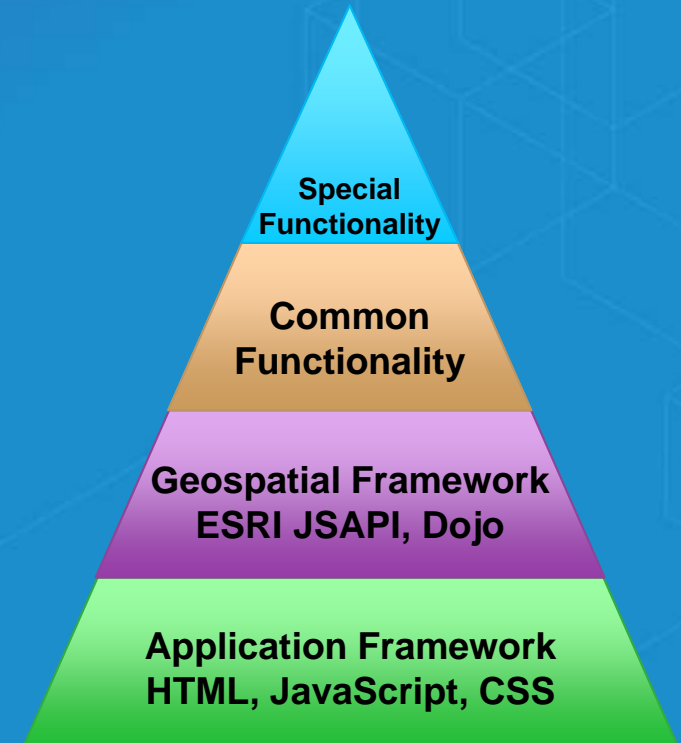


- Scalable Solutions
- In tune with the industry
- Increase Efficiency by Eliminating Redundancy





- Customization
- Scalable Solutions
- In tune with the industry
- Increase Efficiency by Eliminating Redundancy





U.S. AIR FORCE

“AFGSC Incident Command affords my senior leadership

critical geospatial intelligence

to command responding defenders in an evolving emergency environment.”

TSgt Brian Kelsey
90th Missile Wing
Missile Security Forces Squadron



U.S. AIR FORCE



Global Strike Incident Command





Global Strike Incident Command

Locations

Map Tools

Incident Tools

Search

Links

Layers

Log of Events

Empty log of events panel.



File Library

Shared	Templates
SIP Status 5 Nov 15.xlsx	X
SITREP and Recall 90MW WAR - Shortcut.zip	X
90 MW Plan 10-2 Signed.pdf	X
GSIC Support Plan (18 Jun 2015).pdf	X
Upload New File	

Utilities

- Import ALOHA Plume
- Toggle Weather Radar
- Toggle Wind Direction
- Support/Feedback

F.E. Warren Time: 09:51:15
 Your Time: 09:51:15

Weather Conditions

Cheyenne, Cheyenne Airport, WY (KCYS)

Temp: 42.0 F (5.6 C)
 Wind Chill: 36 F (2 C)
 Dewpoint: 28.9 F (-1.7 C)
 Humidity: 60%
 Barometer: 1003.3 mb
 Wind Dir: from the North at 11.5 gusting to 20.7 MPH (10 gusting to 18 KT)
 Visibility: 10.00 mi

Last Updated on Apr 15 2016, 09:51:15 MDT

Chat

On-Scene	Emergency Operations Center	Crisis Action Team
Message Here (Max 255 Characters) <input type="text"/>	Message Here (Max 255 Characters) <input type="text"/>	Message Here (Max 255 Characters) <input type="text"/>
<input type="button" value="Send"/>	<input type="button" value="Send"/>	<input type="button" value="Send"/>
<input type="button" value="Connect"/> <input type="button" value="Get Transcript"/> <input type="button" value="Clear"/>	<input type="button" value="Connect"/> <input type="button" value="Get Transcript"/> <input type="button" value="Clear"/>	<input type="button" value="Connect"/> <input type="button" value="Get Transcript"/> <input type="button" value="Clear"/>



U.S. AIR FORCE



ADSFKJFKJASDFASGSDDKGKSDJKGJL
ADSFKJFKJASDFASGSDDKGKSDJKGJL
ADSFKJFKJASDFASGSDDKGKSDJKGJL

Source: Esri, DigitalGlobe, GeoEye, i-cubed, USDA, USGS, AEX, Getmapping, Aerogrid, IGN, IGP, s...



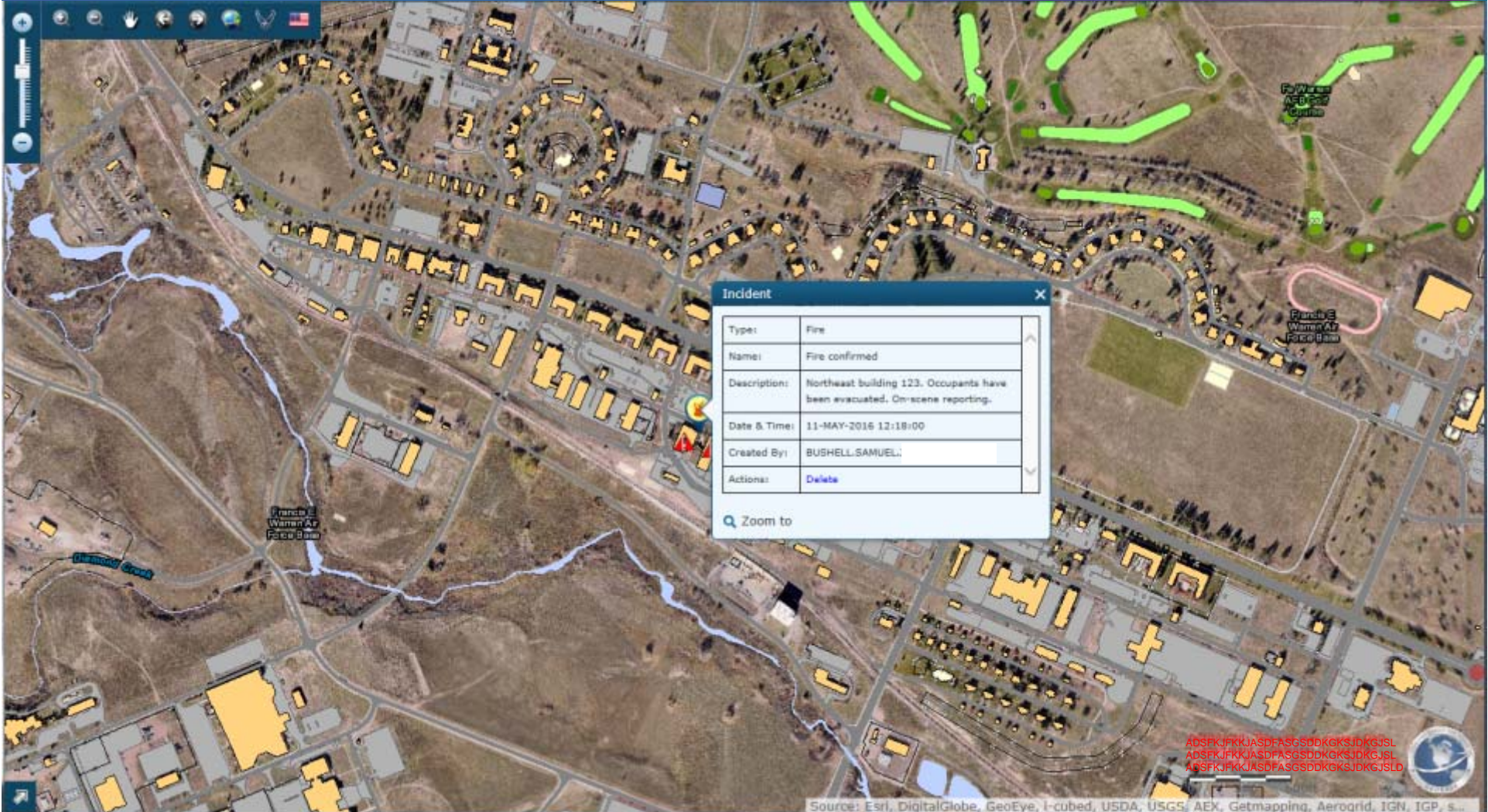
U.S. AIR FORCE



Source: Esri, DigitalGlobe, GeoEye, I-cubed, USDA, USGS, AEX, Getmapping, Aerogrid, IGN, IGP, s...



U.S. AIR FORCE





U.S. AIR FORCE

The image displays a complex aerial map interface. On the left, two web camera feeds are stacked vertically. The top feed is titled "Web Camera: I-80 Roundtop (cam 357.7) - West" and shows a wide highway under a cloudy sky. The bottom feed is titled "Web Camera: I-80 Roundtop (cam 357.7) - Gate" and shows a similar view from a different angle. The main map area is an aerial photograph of a residential and commercial area. A large red circular overlay is centered on a building complex. To the right of the red circle, there are three overlapping map layers: a top layer with a color gradient from yellow to orange, a middle layer with a color gradient from yellow to blue, and a bottom layer showing a network of green lines with purple square nodes. In the bottom right corner, there is a small circular logo and a red text block containing alphanumeric strings.

Web Camera: I-80 Roundtop (cam 357.7) - West
www.weather.gov/ftm/... 8:00 AM CST 04/17/2014
Copyright © 2010 State of Wyoming. All rights reserved.

Web Camera: I-80 Roundtop (cam 357.7) - Gate
www.weather.gov/ftm/... 8:00 AM CST 04/17/2014
Copyright © 2010 State of Wyoming. All rights reserved.

ADSPKJFKUJASDFASGSDDKGKSDJGUSL
ADSPKJFKUJASDFASGSDDKGKSDJGUSL
ADSPKJFKUJASDFASGSDDKGKSDJGUSL

Source: Esri, DigitalGlobe, GeoEye, I-cubed, USDA, USGS, AEX, Getmapping, AeroGrid, IGN, IGP, s...



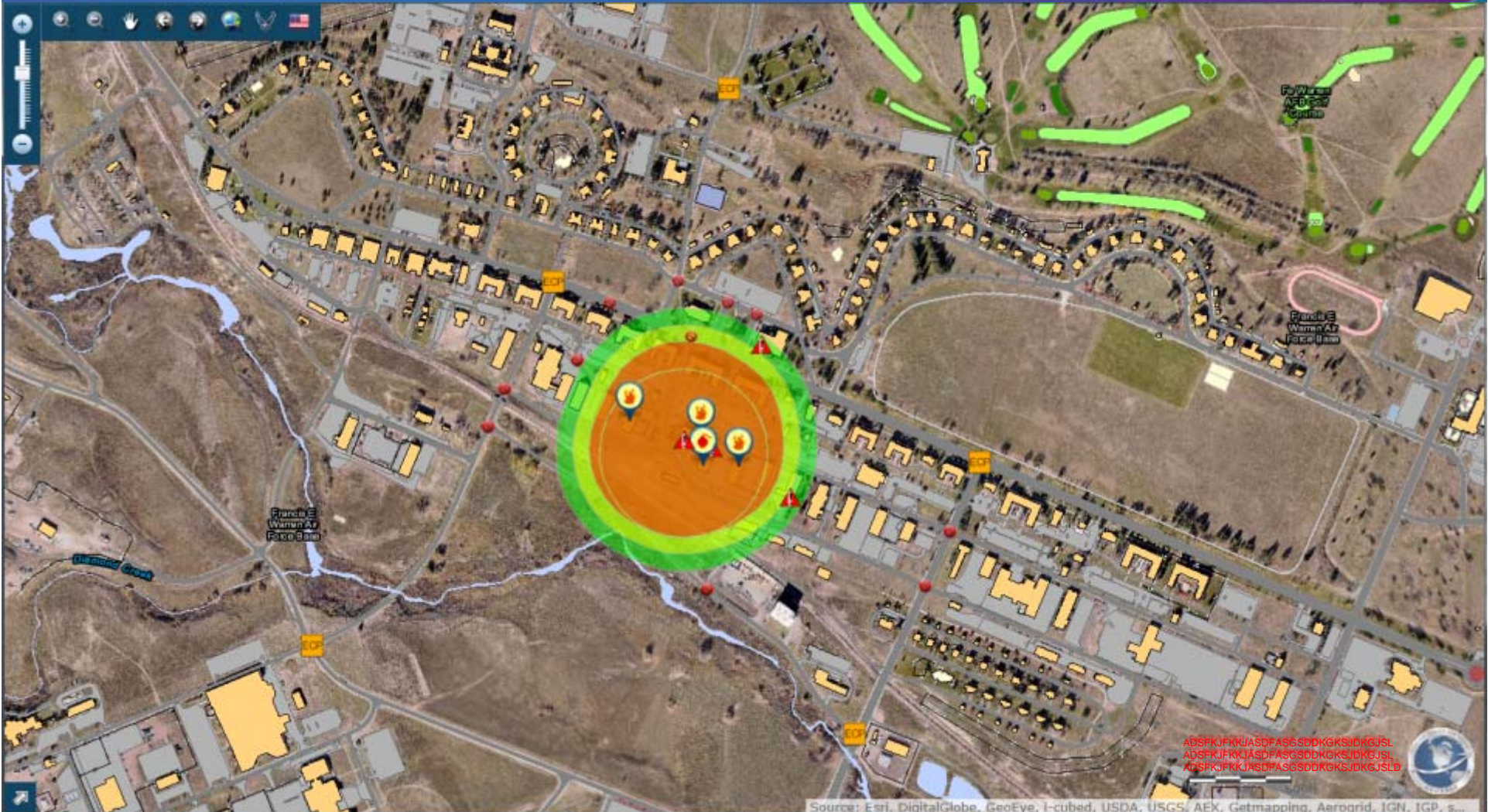
U.S. AIR FORCE



Source: Esri, DigitalGlobe, GeoEye, I-cubed, USDA, USGS, AEX, Getmapping, AeroGRID, IGN, IGP, s...



U.S. AIR FORCE



Source: Esri, DigitalGlobe, GeoEye, I-cubed, USDA, USGS, AEX, Getmapping, AeroGRID, IGN, IGP, s...

ADSPKJFKUJASDFAS6SDDKGSJDKGJSL
ADSPKJFKUJASDFAS6SDDKGSJDKGJSL
ADSPKJFKUJASDFAS6SDDKGSJDKGJSL



U.S. AIR FORCE



Source: Esri, DigitalGlobe, GeoEye, I-cubed, USDA, U5GS, AEX, Getmapping, AeroGrid, IGN, IGP, s...



Global Strike Incident Command

[Locations](#)[Map Tools](#)[Incident Tools](#)[Search](#)[Links](#)[Layers](#)

Log of Events

- 15-APR-2016 01:25Z
EOC Standing Down
- 15-APR-2016 01:24Z
Clarification is endex
- 15-APR-2016 01:22Z
ENDEX
- 15-APR-2016 01:17Z
FRT enroute to Helo for Casualty Evac to take them to nearest treatment facility.
- 15-APR-2016 01:14Z
Hostilities have ceased. SFs is conducting sweeps.
- 15-APR-2016 01:08Z
ECP: Access road leading into
- 15-APR-2016 01:04Z
Resource was secured at 1840



File Library

Shared

Templates

- SIP Status 5 Nov 15.xlsx
- SITREP and Recall 90MW WAR - Shortcut.zip
- 90 MW Plan 10-2 Signed.pdf
- GSIC Support Plan (18 Jun 2015).pdf
- Upload New File

Utilities

- Import ALOHA Plume
- Toggle Weather Radar
- Toggle Wind Direction
- Support/Feedback

F.E. Warren Time: 09:51:15
Your Time: 09:51:15

Weather Conditions

Cheyenne, Cheyenne Airport, WY (KCYS)

Temp: 42.0 F (5.6 C)
Wind Chill: 36 F (2 C)
Dewpoint: 28.9 F (-1.7 C)
Humidity: 60%
Barometer: 1003.3 mb
Wind Dir: from the North at 11.5 gusting to 20.7 MPH (10 gusting to 18 KT)
Visibility: 10.00 mi

Last Updated on Apr 15 2016, 09:51 AM MDT

Chat

On-Scene

- 11:40 User: All units reporting
- 11:42 User: SFG deployed, hostiles identified
- 11:43 User: TCP/ECP established
- 11:48 User: Evac routes identified
- 11:54 user: Additional alarms

Message Here (Max 255 Characters)

Send

Connect Get Transcript Clear

Emergency Operations Center

Message Here (Max 255 Characters)

Send

Connect Get Transcript Clear

Crisis Action Team

Message Here (Max 255 Characters)

Send

Connect Get Transcript Clear



Thank you

UC

Joel Bennett
GeoBase Software Engineer



Sam Bushell
GeoBase Administrator

