

Streets' and Urban Land Parcels' Corporate Database of Rio de Janeiro

Leandro Gomes Souza
Geographer

Pereira Passos Institute
City of Rio de Janeiro

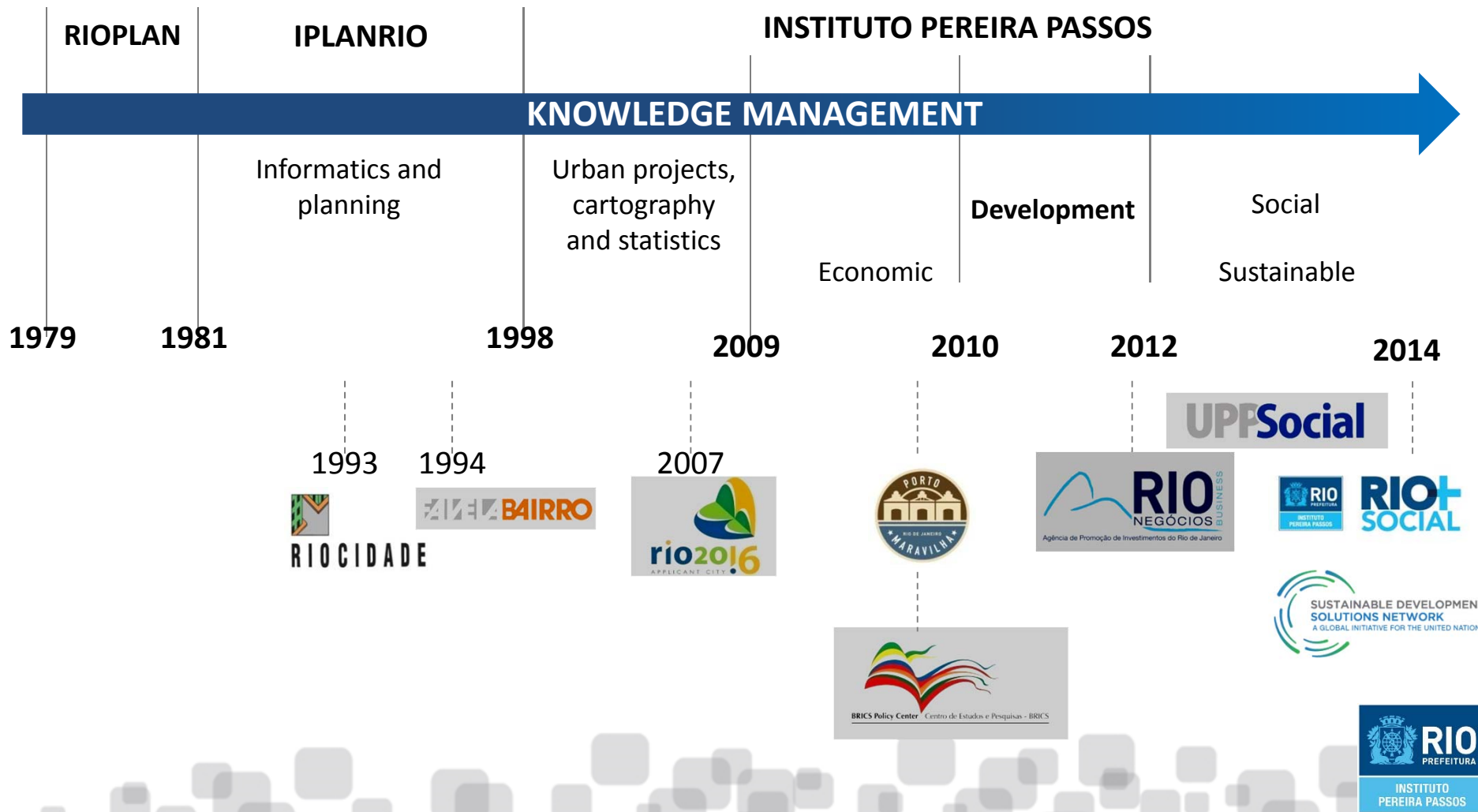
About us

Pereira Passos Institute (IPP) is Rio de Janeiro municipal department responsible for data and knowledge management of the city, being the manager of its corporate GIS.

IPP performs the production, analysis and dissemination of geographical information, into tables, maps, studies and WebGIS application, being considered a department of excellence and national reference in this field.

One of its missions is to promote integration of information from several sources using geotechnologies, cooperating with other municipal departments, aiming the production of knowledge for more efficient planning, implementing and monitoring of public policies.

Timeline



Streets' and urban parcels model

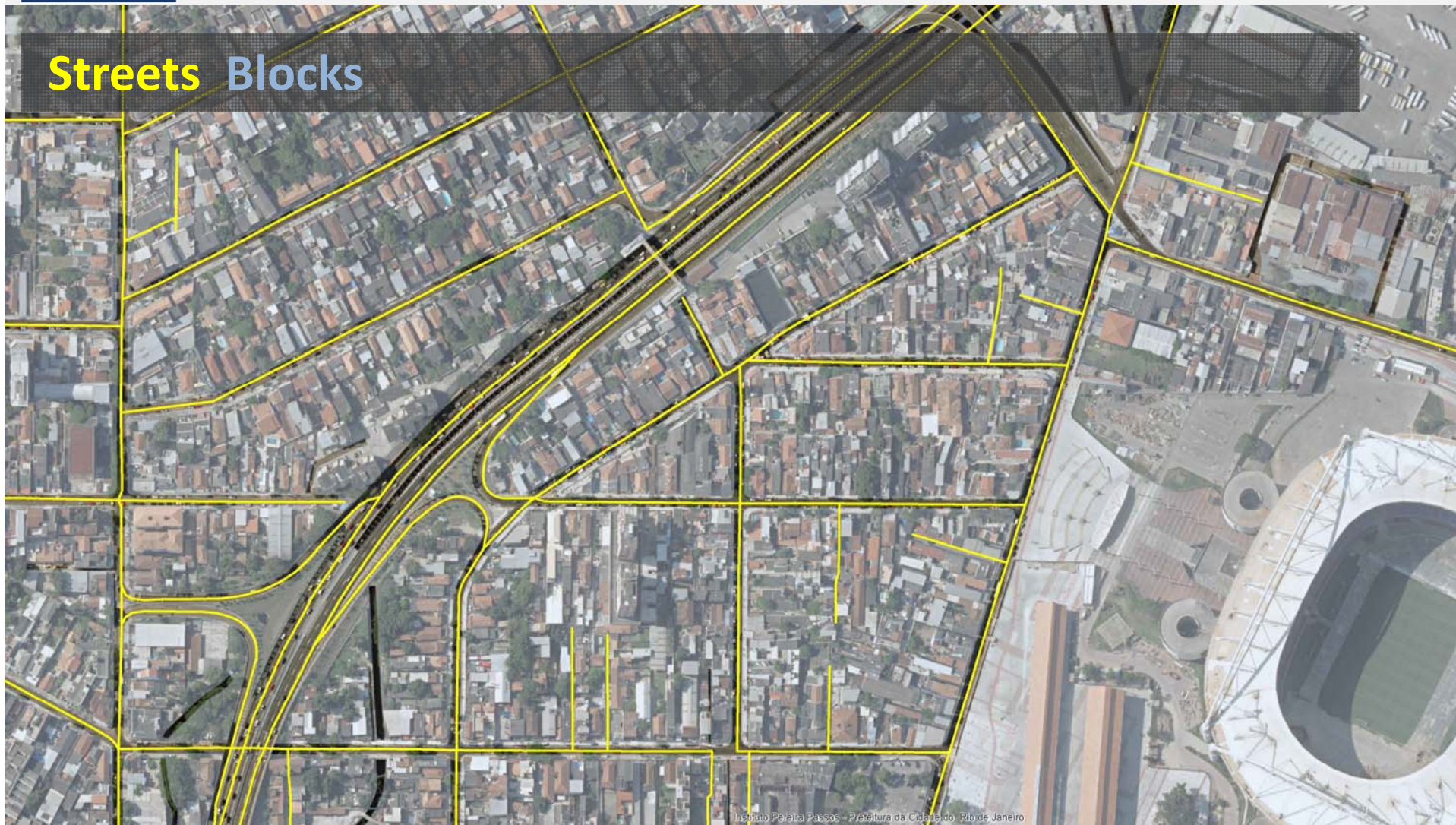
- Streets / Blocks / Block faces / Lots / Edification / Door number
- Land parcels (allotment, dismember, unite)



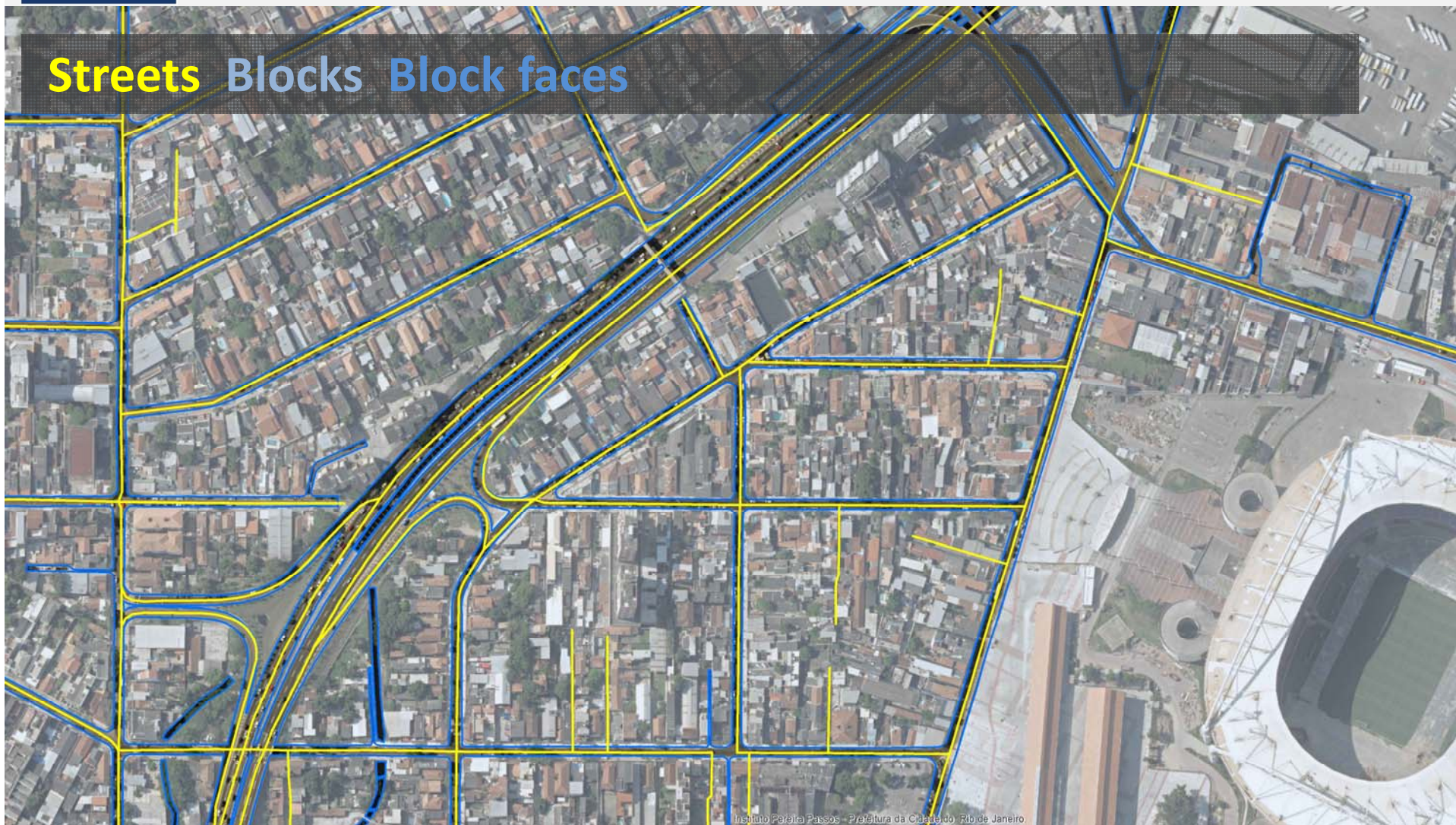
Streets



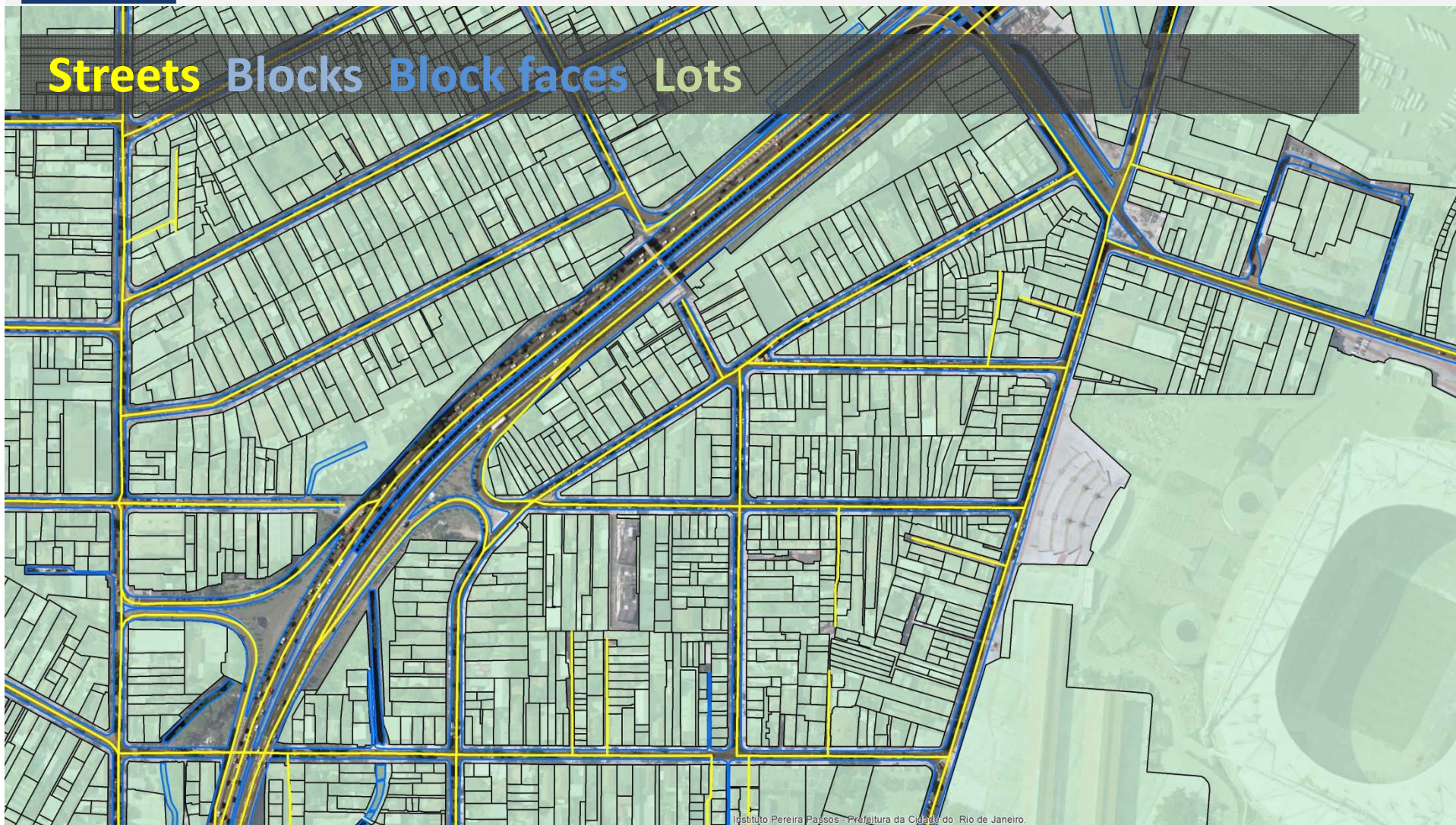
Streets Blocks



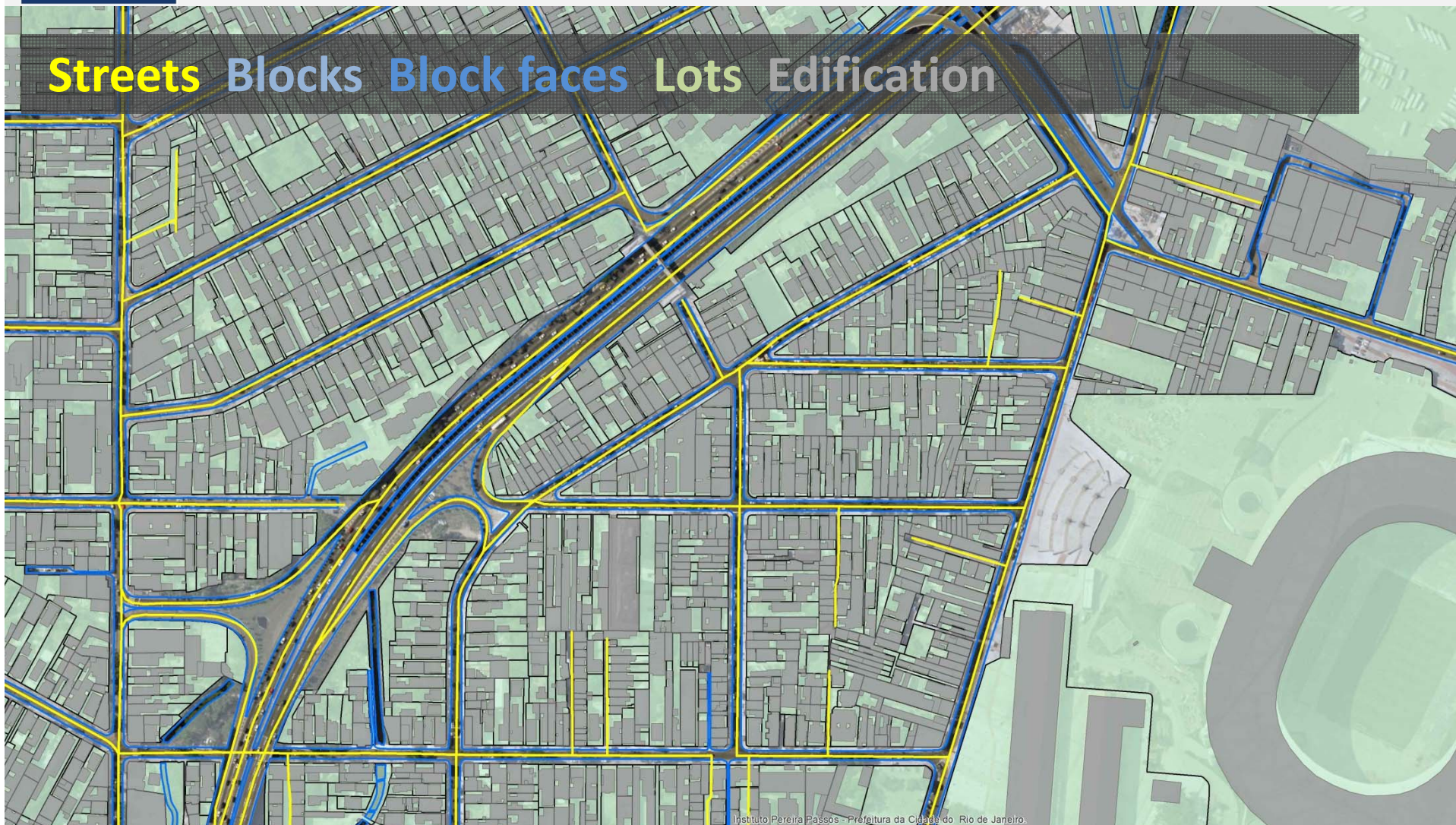
Streets Blocks Block faces



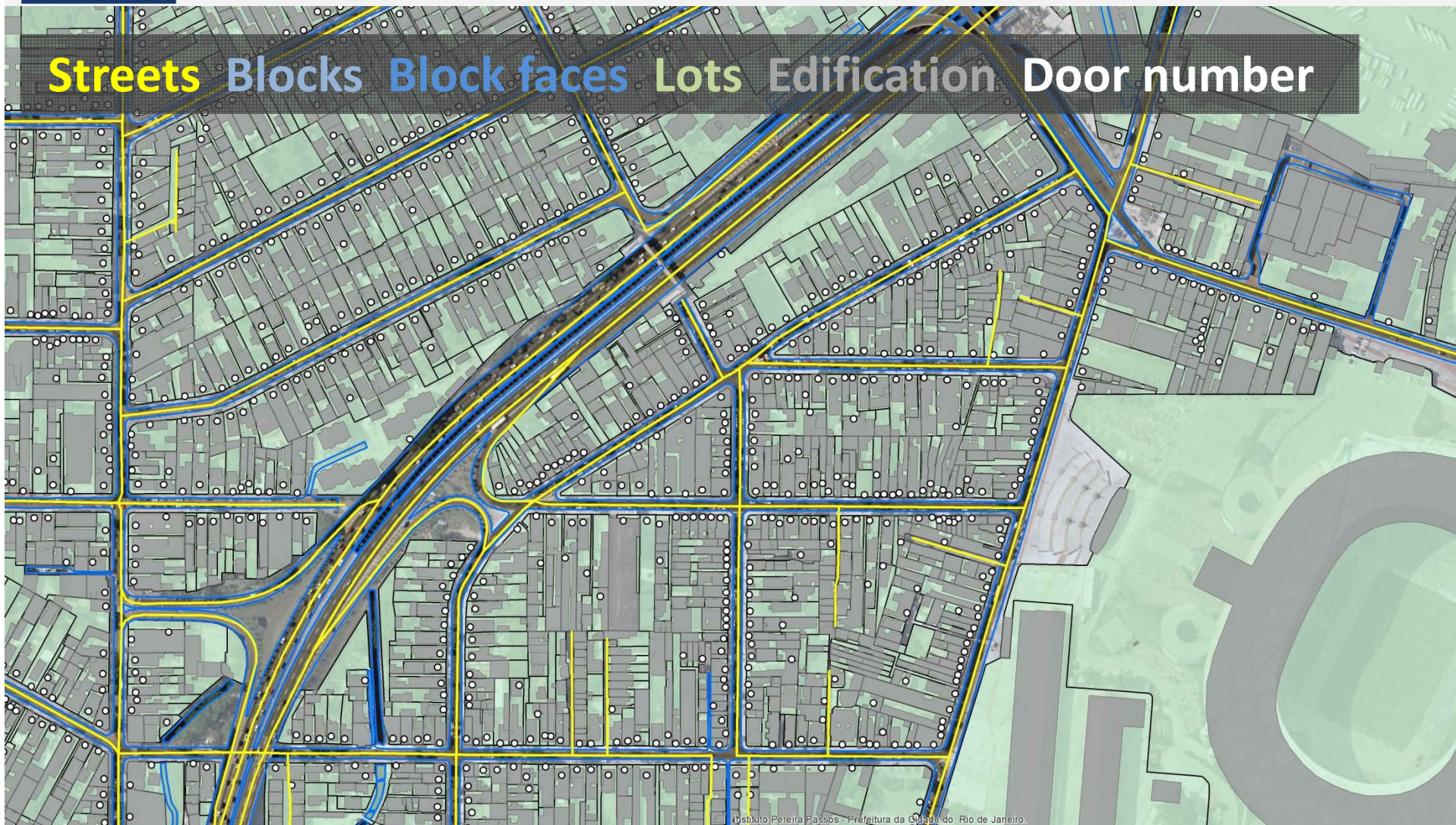
Streets Blocks Block faces Lots



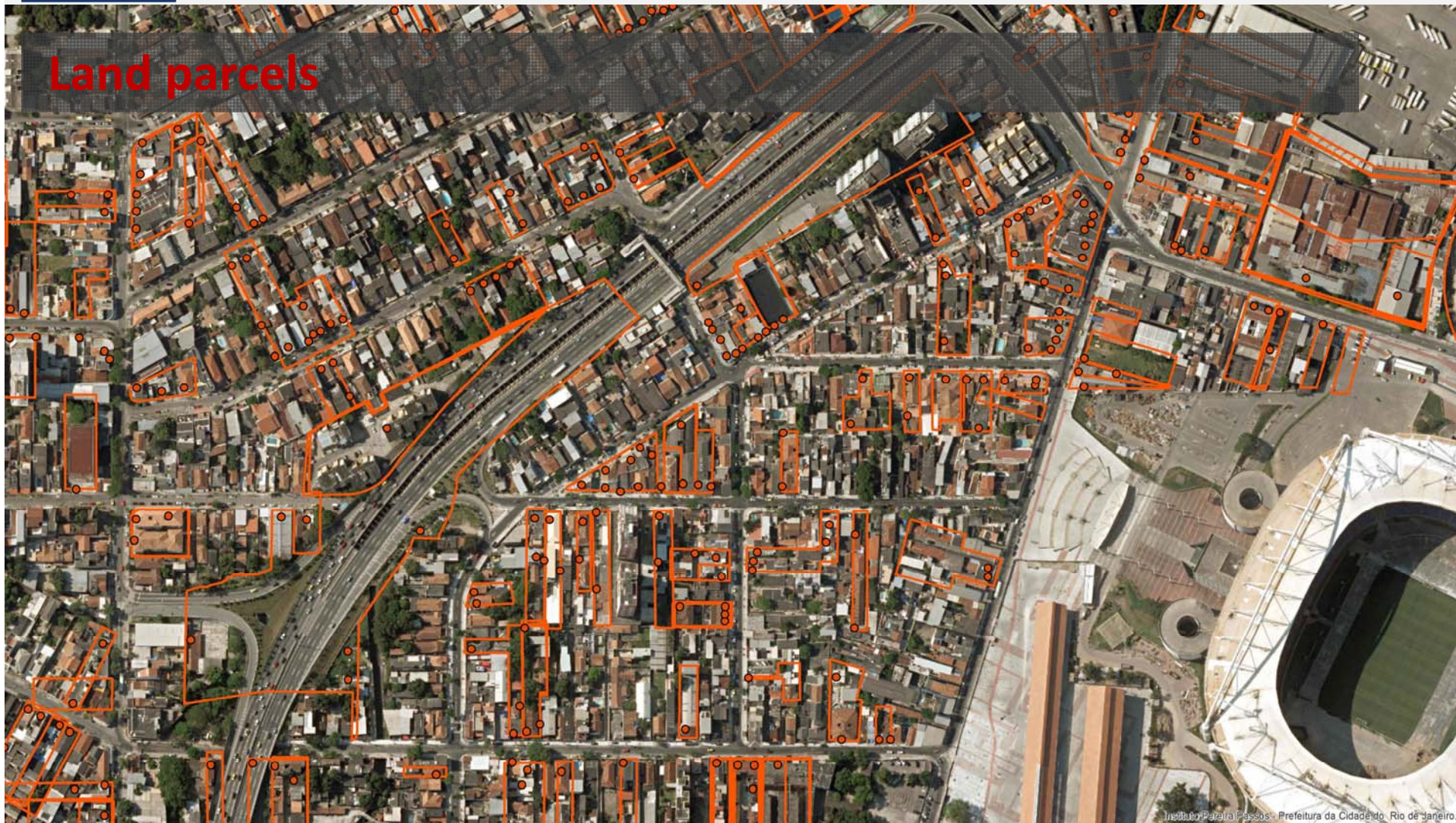
Streets Blocks Block faces Lots Edification

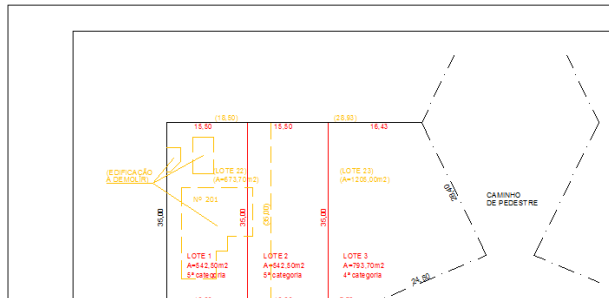
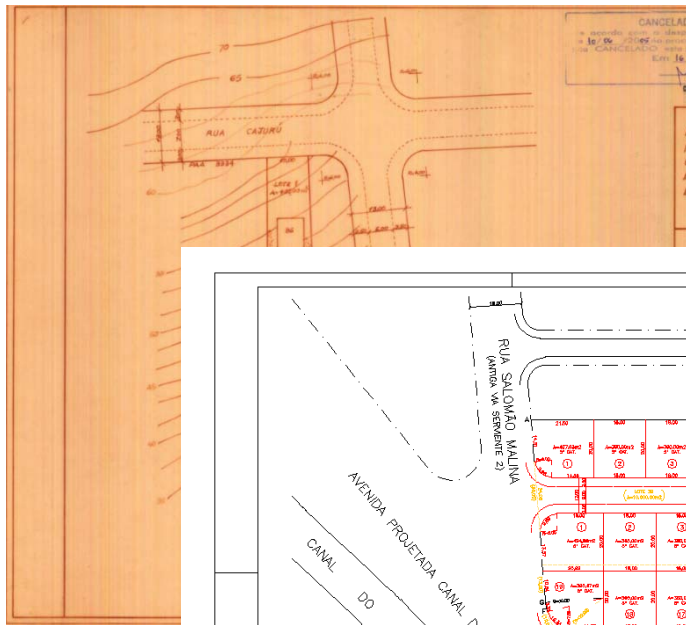


Streets Blocks Block faces Lots Edification Door number



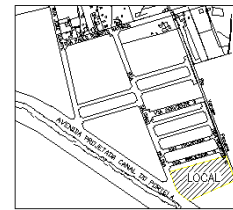
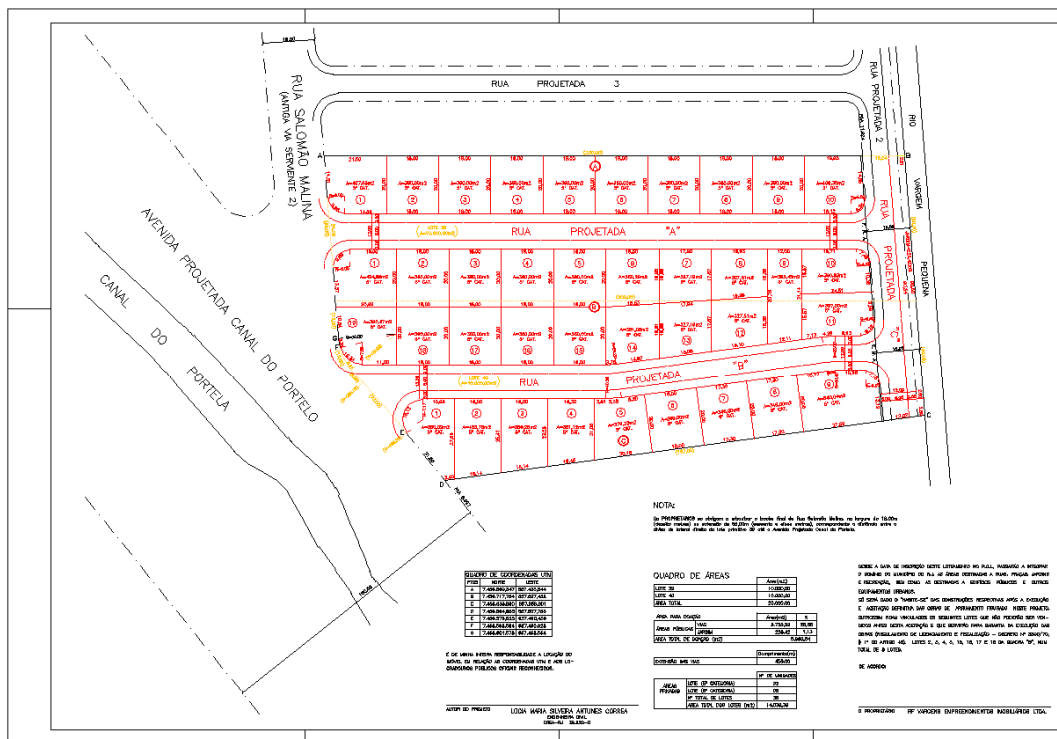
Land parcels





48001

PROJETO PARA REMEMBRAMENTO E DESMEMBRAMENTO DOS LOTES 22, ONDE EXISTE O PREDIO Nº 201 (A DEMOLIR) E 23, DA QUADRA O, DO PAL 33120, RUA MARINA GUIMARÃES, BARRA DA TIJUCA.



PLANTA DE LOCALIZAÇÃO

13376 48065

PROJETO PARA REMEMBRAMENTO E LOTEAMENTO DOS LOTES 30 E 40 DO PAL. 25.220 SITUADOS NA RUA SALOMÃO MALINA, AVENIDA VIA SERVENTE 2, FAZENDO O LOTE 40 ESQUINA COM A AVENIDA CANAL DO PORTELA DO NARRINHO, ALTEMO O PAL. 26.202

TERMO DE URBANIZAÇÃO ASSINADO EM 06/08/2012

TERMO DE VINCULAÇÃO DE LOTE ASSINADO EM 06/08/2012

TERMO DE DOAÇÃO DE LOTE ASSINADO EM 06/08/2012

PROJETO DE RECONSTRUÇÃO Nº 13376/2012

PROJETO DE RECONSTRUÇÃO Nº 48065/2012

DATA	PROJETO	ESCALA
14/04/2012	48065	1:500

UNOS / E OUTROS
1322

UNOS
1322

RICA: ESCALA: 1:500

OV: 18/06/2012

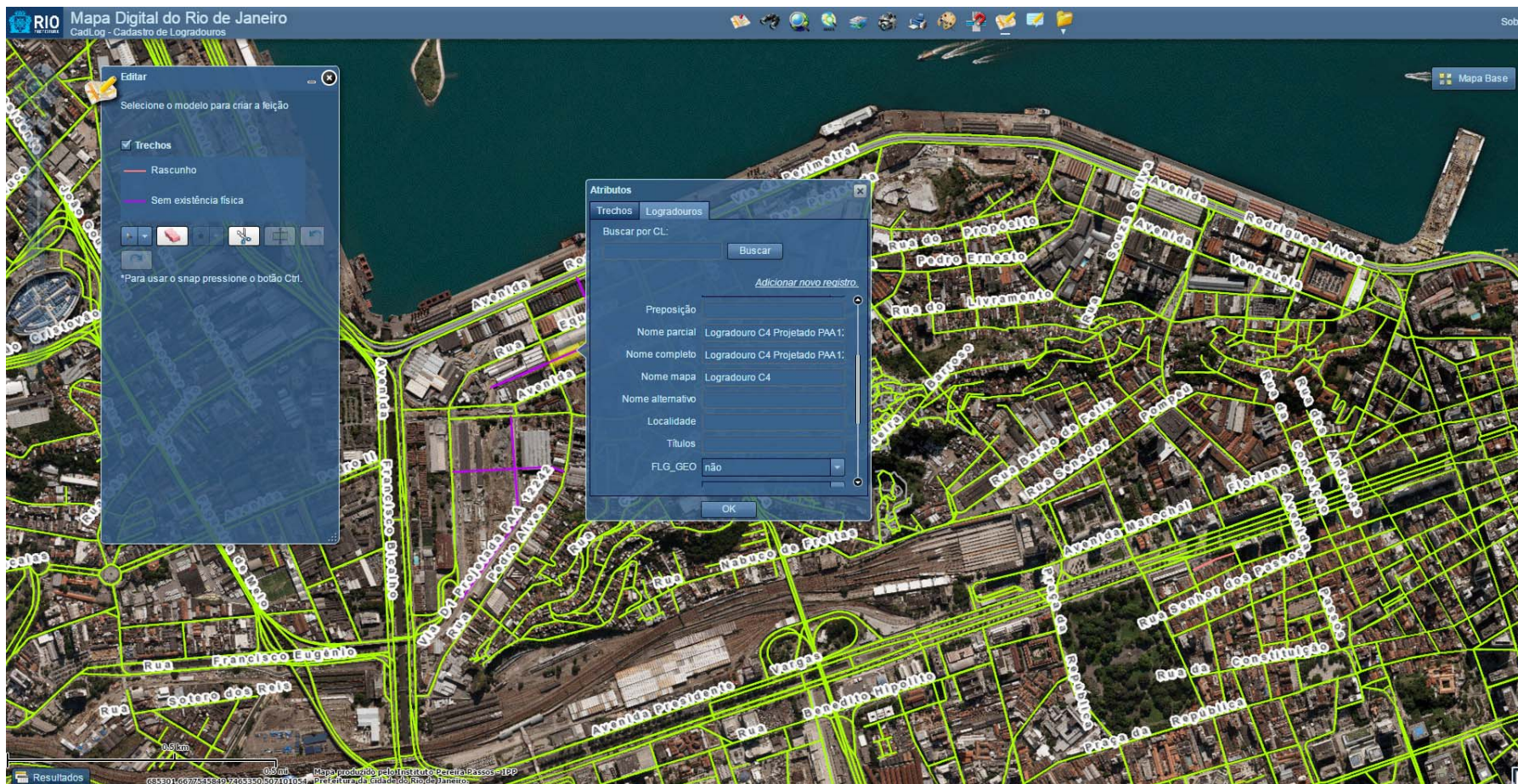
Database evolution

- 1999 – Cartographic restitution (Streets / Blocks / Edification / Door number)
- 2006-2008 / 2010-2012 – Fieldwork “geo1” and “geo2” (Streets / Blocks / Door number)
- 2010 / 2012 – PALs’ georeferencing (Lots - points)
- 2012 onwards – Annual ortophotos (Streets)
- 2013 / 2015 – Favela’s Streets’ mapping (Streets)
- 2015 – New cartographic restitution (Streets / Blocks / Block faces / Lots / Edification / Door number)
- On course – Georeferenced construction licenses (Door number)

Main achievements

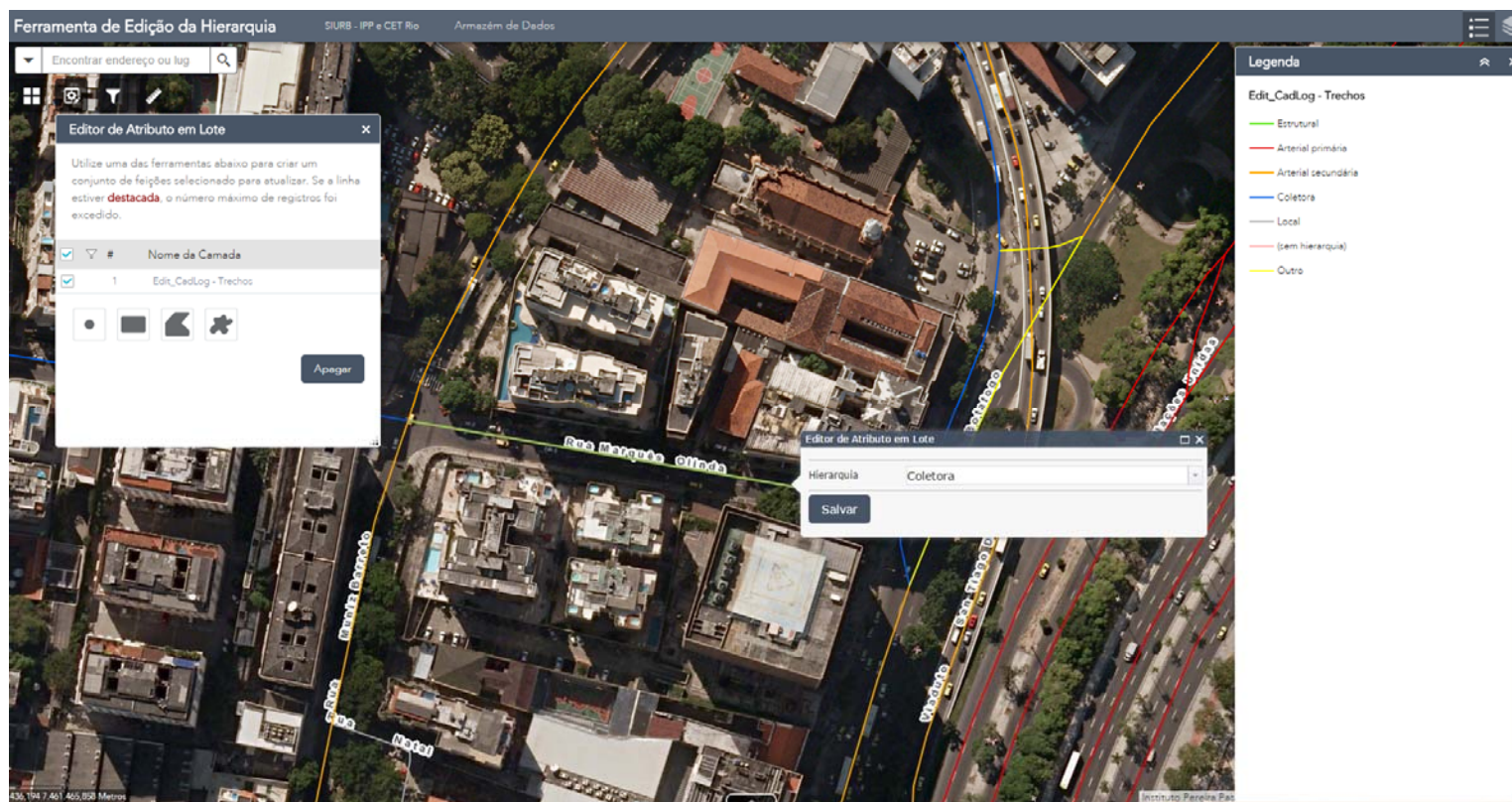
- CadLog – Digital Maps (2010)
- CadTec (2010)
- CadLog Edit WebGIS app (2011)
- SIURB (2014)

- CadLog Edit WebGIS app



Next steps

- Traffic department information



Conclusion

- This integration allows information sharing and use of an updated database of street's and urban land parcels'
- This information is crucial for location, analysis and planning of public policies from several departments of Rio de Janeiro City Hall

Streets' and Urban Land Parcels' Corporate Database of Rio de Janeiro

Thank you for your attention !!!!

Leandro Gomes Souza

Geographer

leandro.souza@rio.rj.gov.br

Pereira Passos Institute

City of Rio de Janeiro