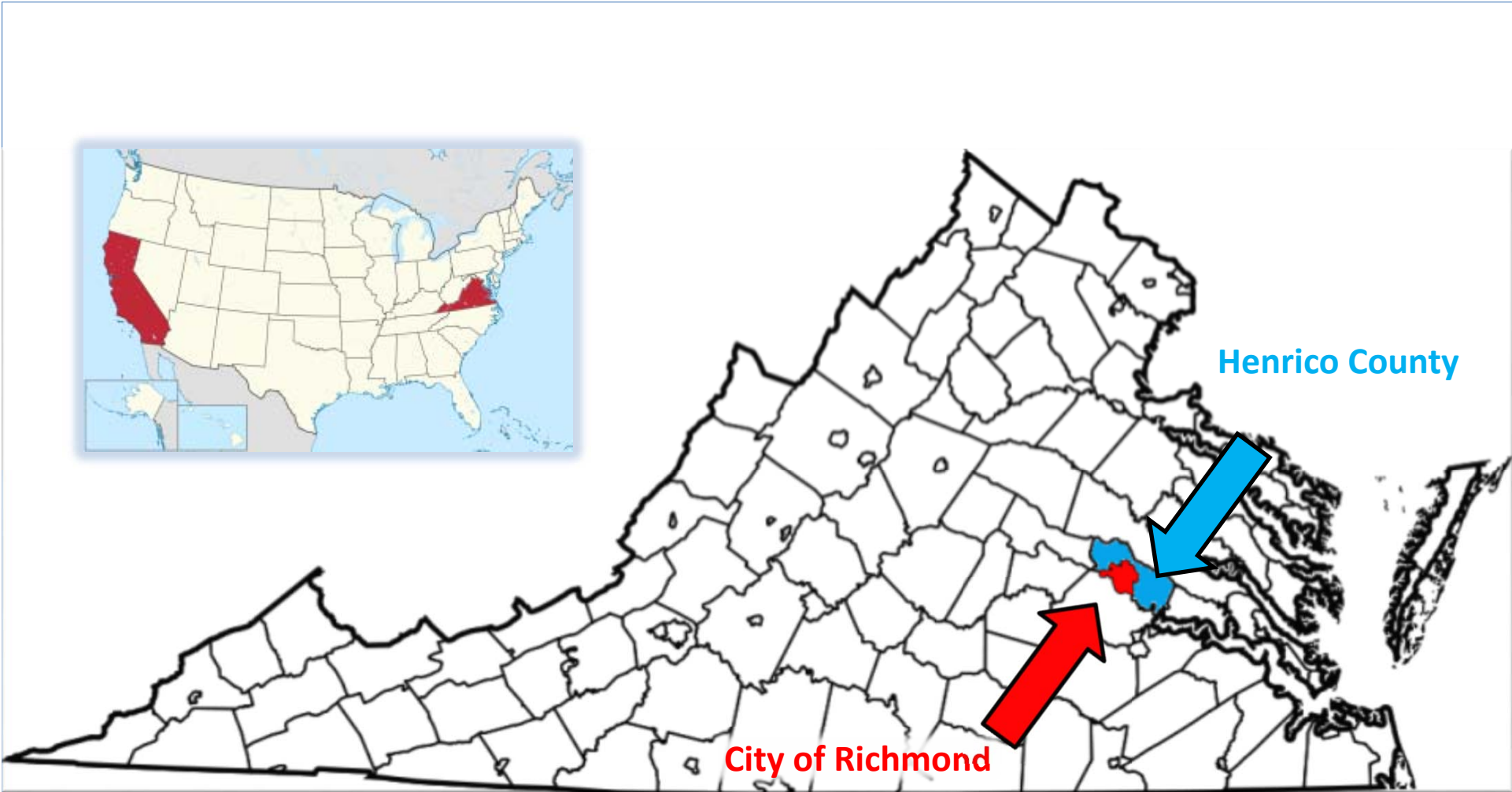

WHAT YOU CAN'T LEAVE BEHIND

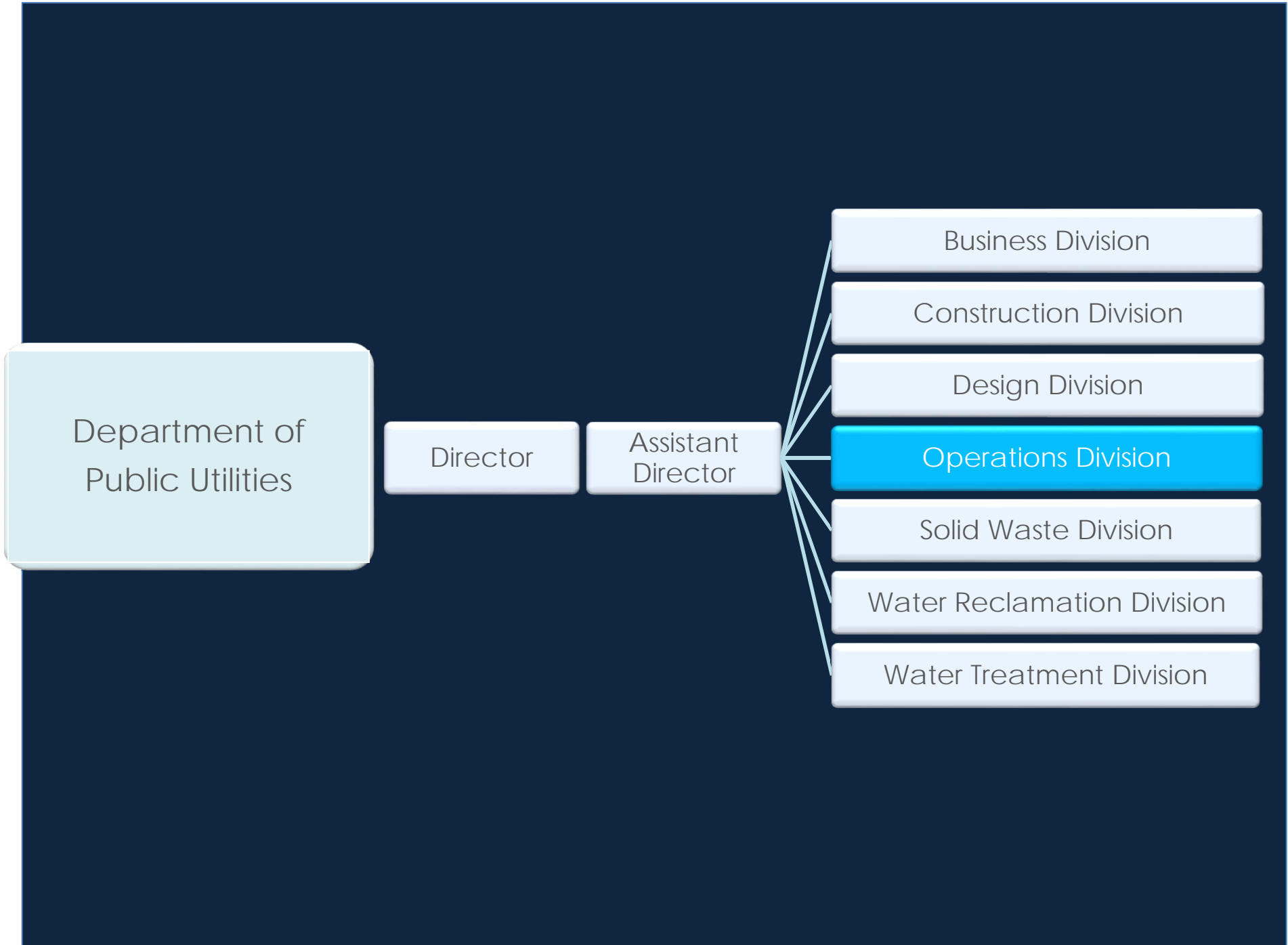
Utility Sustainability Through GIS



Bentley Chan, P.E., Cliff Parker, and Emily Burns, E.I.T.
Esri User Conference
June 29, 2016



HENRICO COUNTY, VIRGINIA



Department of
Public Utilities

Director

Assistant
Director

Business Division

Construction Division

Design Division

Operations Division

Solid Waste Division

Water Reclamation Division

Water Treatment Division

OPERATIONS DIVISION

```
graph LR; A[OPERATIONS DIVISION] --- B[Administration Section]; A --- C[Wastewater Collection Section]; A --- D[Water Distribution Section]; A --- E[Water / Wastewater Pumping Section]; A --- F[Utilities Warehouse]
```

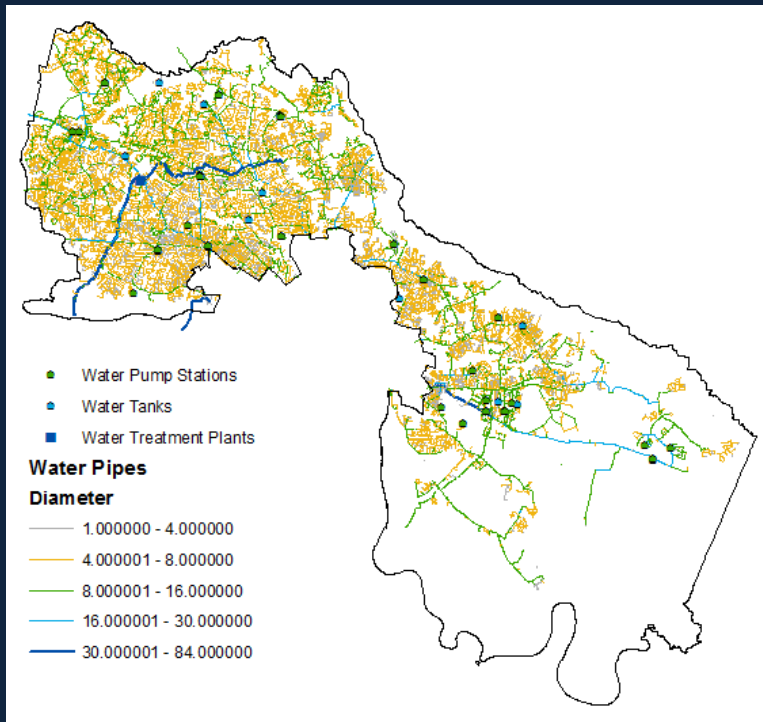
Administration Section

Wastewater Collection Section

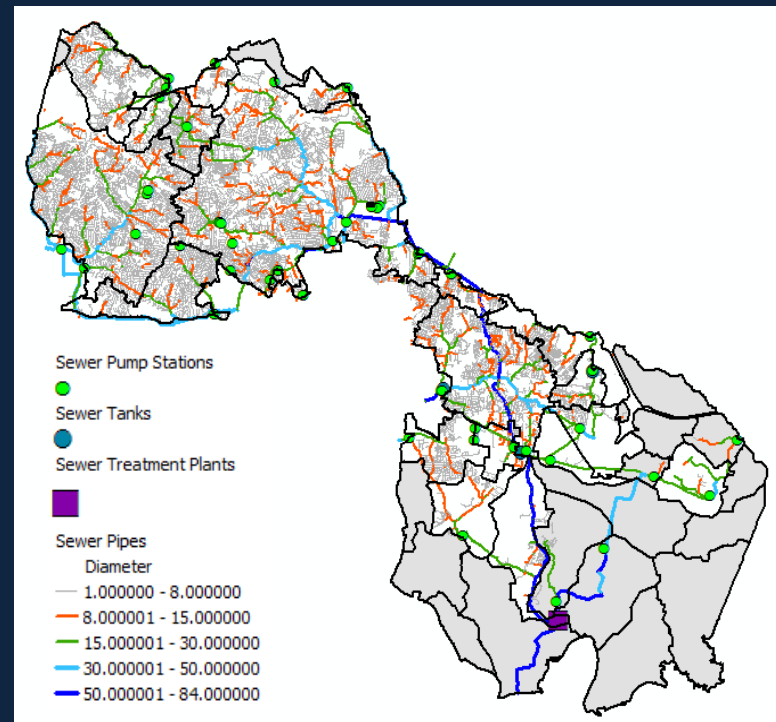
Water Distribution Section

Water / Wastewater Pumping Section

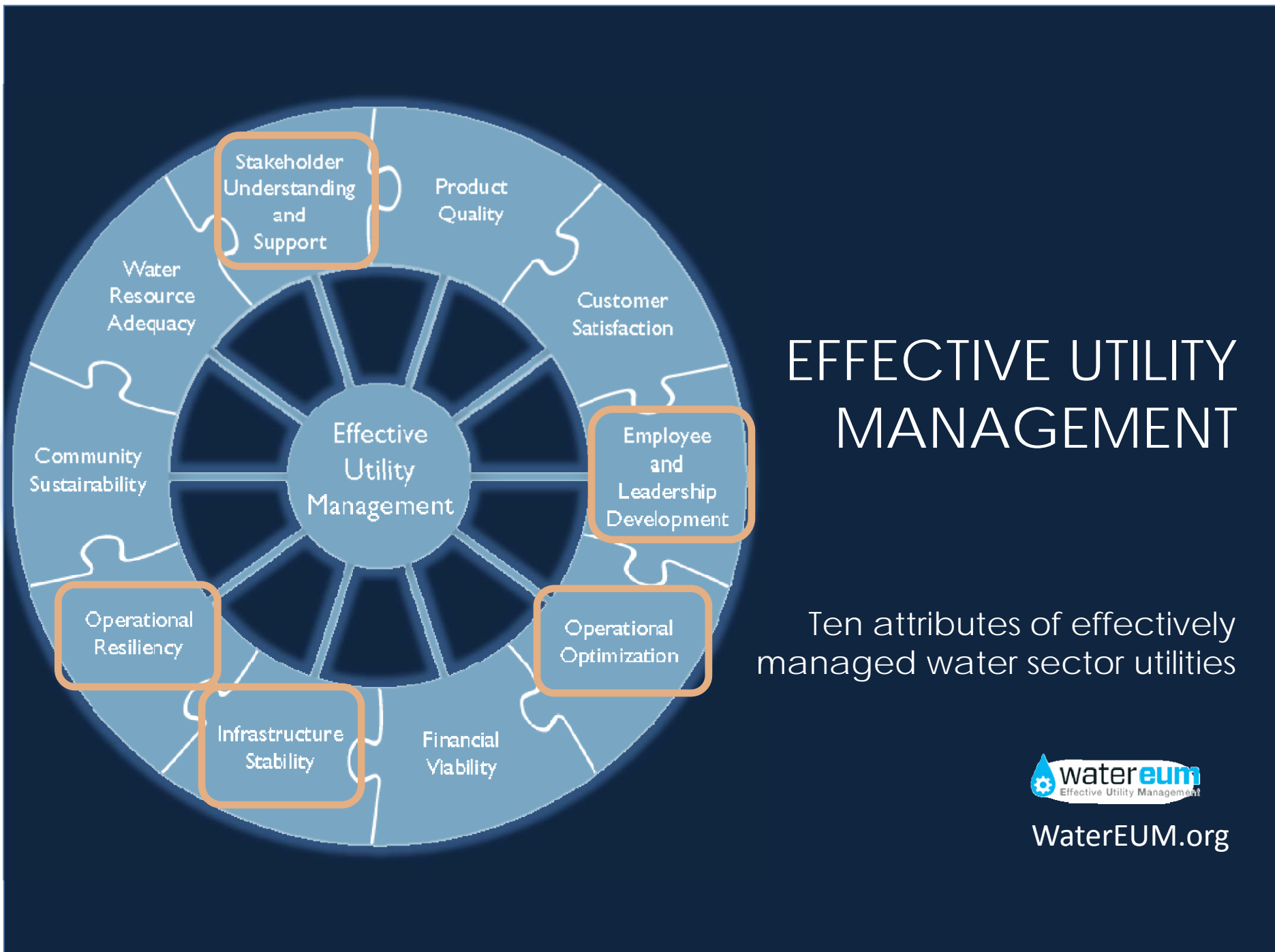
Utilities Warehouse



WATER DISTRIBUTION



WASTEWATER COLLECTION



EFFECTIVE UTILITY MANAGEMENT

Ten attributes of effectively managed water sector utilities



WaterEUM.org

PUT THAT THING BACK WHERE IT CAME FROM OR SO HELP ME . . .

Making a Sustainable Database

Data Management and Access

Critical Volume of Assets

Leveraging the Data

Regulatory Requirements

Gathering and Analyzing Information

Handling Issues

Customer Concerns

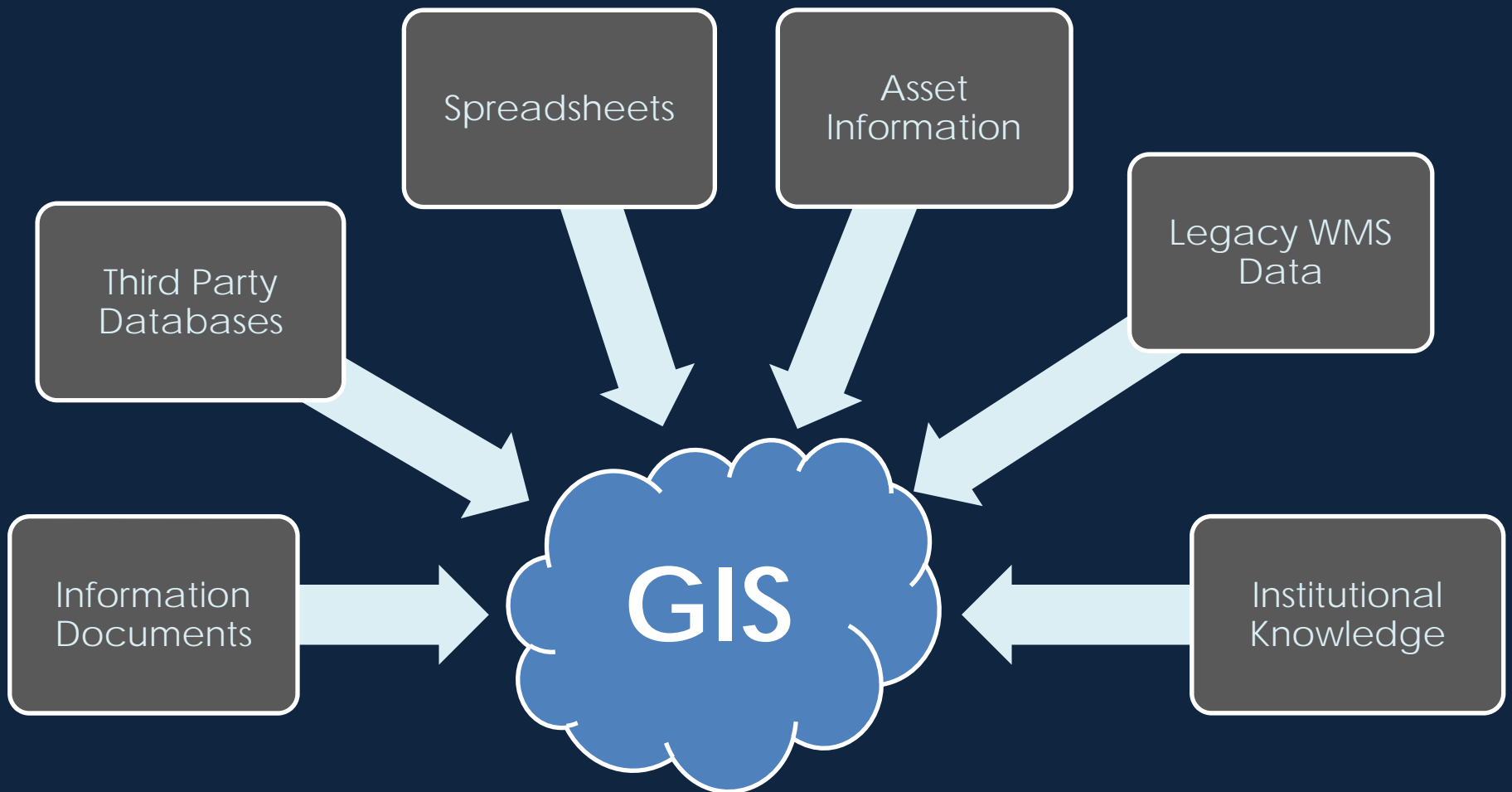
Charting and Tracking Information

Asset Management

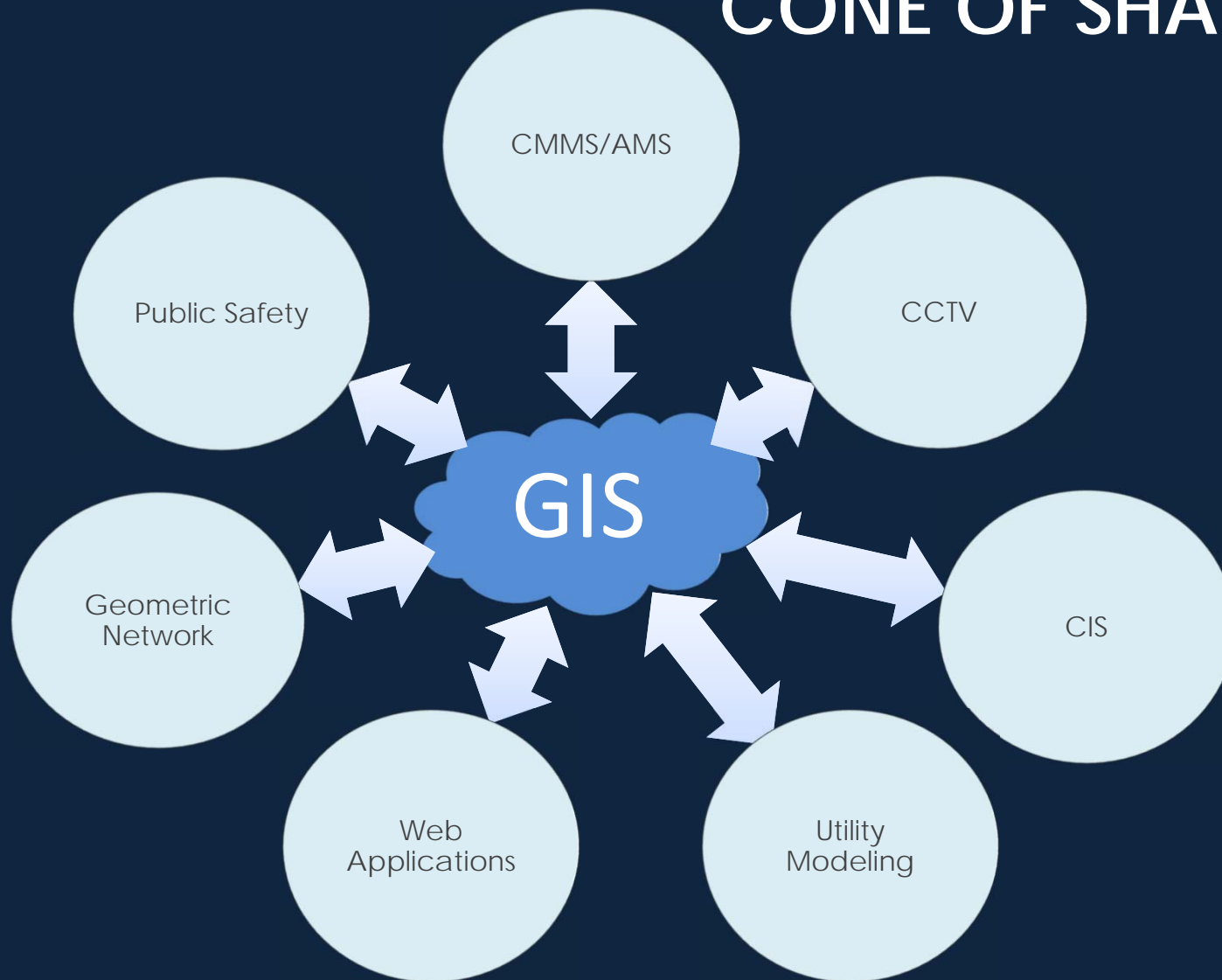
Intelligence

Updating

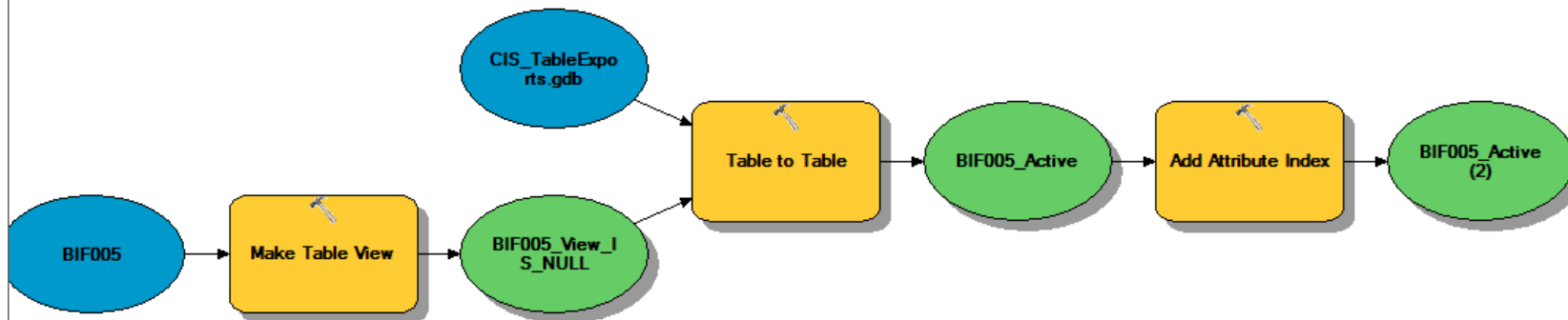
I DO NOT LIKE THE CONE OF SHAME . . .



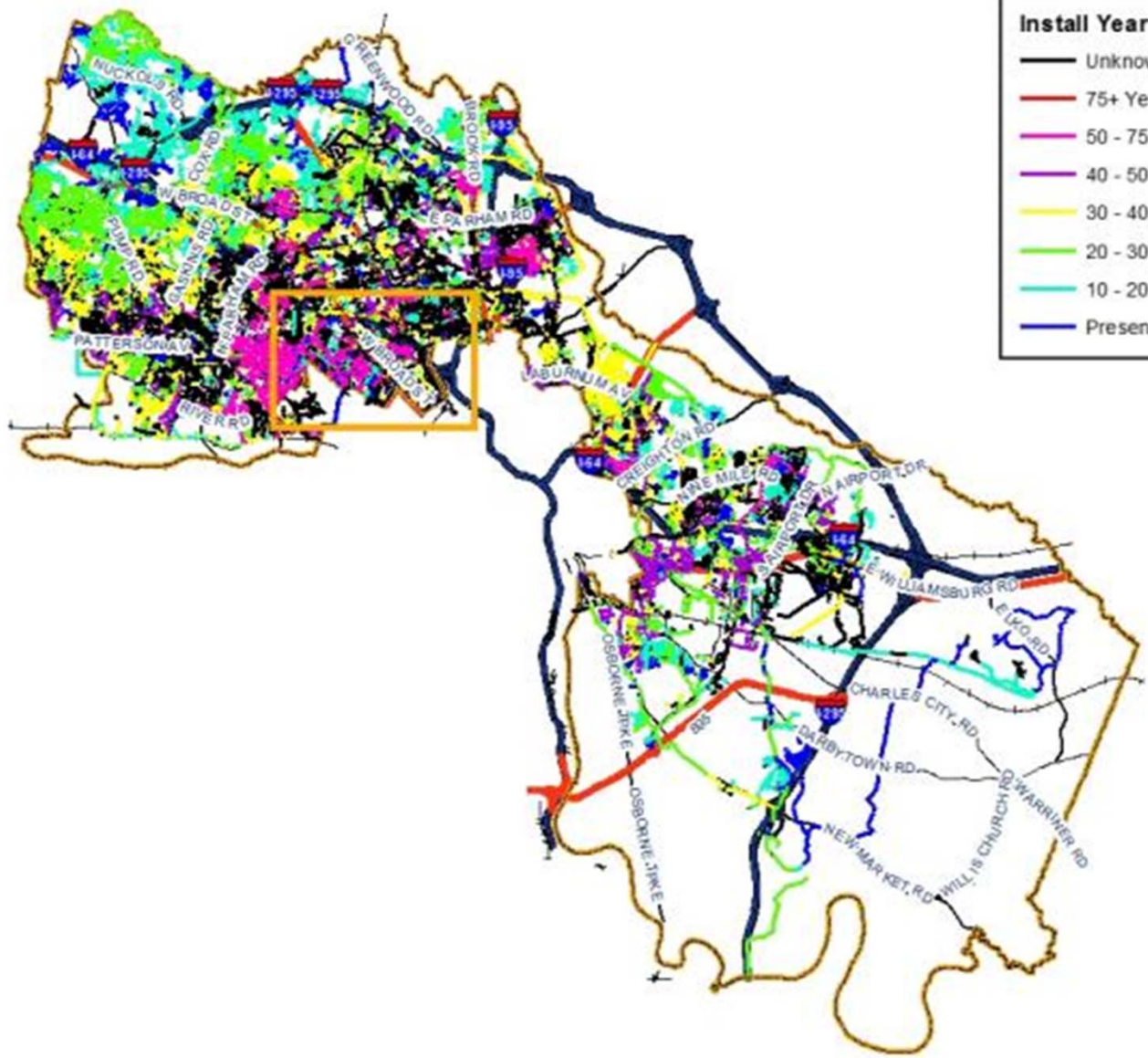
I DO NOT LIKE THE
CONE OF SHAME . . .

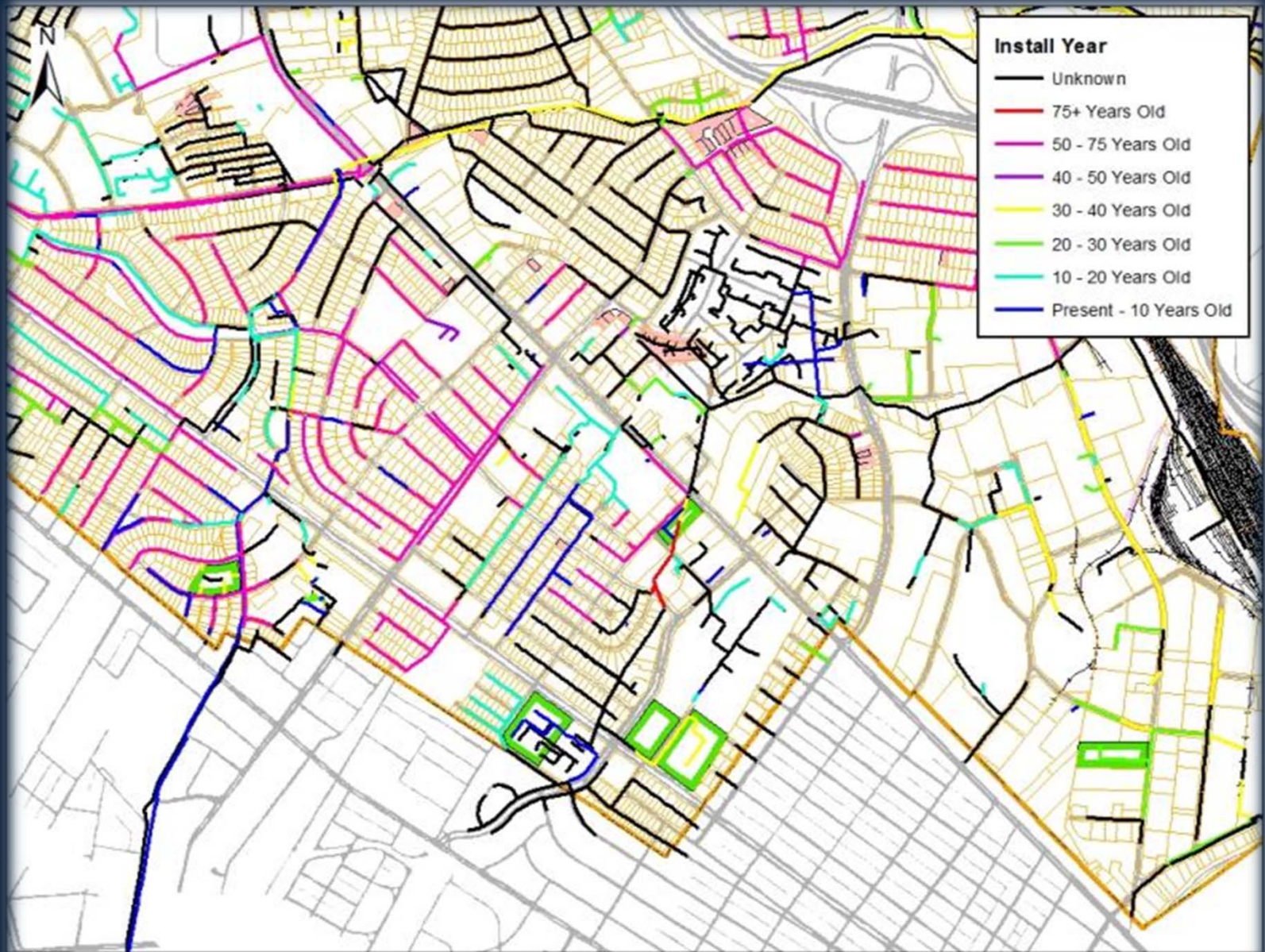


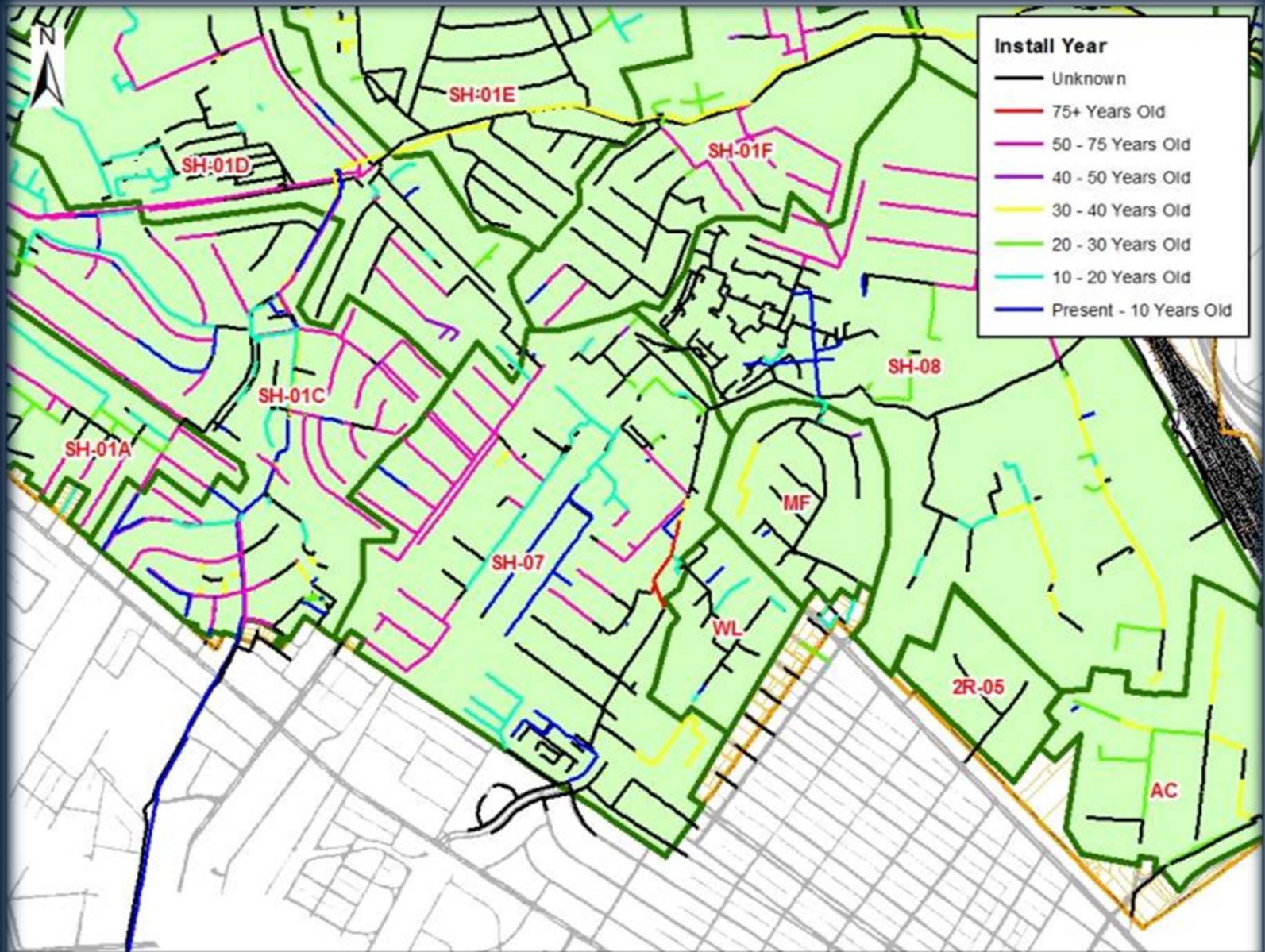
Active CIS Meter Export



— DEMO —







JUST KEEP SWIMMING . . .

BRAVE NEW WORLD

- GIS Centricity
- Data Valuation

GIS ARCHITECTURE

- Integration
- Interconnectivity

GIS SOLUTIONS

- Utility Management
- Regulatory Requirements

TO INFINITY . . .

Continual
Improvement

Everywhere
All At Once

Linking
Everything
Together

The Process

- A Living and Evolving Database

- Data Centricity
- GIS Database is the Primary Repository of All Data

- Information Availability
- No More Islands

- Unified Business
- Simplify and Streamline

WHERE IS MY SUPER SUIT?

Bentley Chan, P.E.
bentley.chan@henrico.us
804.727.8711

Cliff Parker
cliff.parker@henrico.us
804.501.5769

Emily Burns, E.I.T.
emily.burns@henrico.us
804.727.8790



#whatyoucantleavebehind

