

Web GIS at The Trust for Public Land

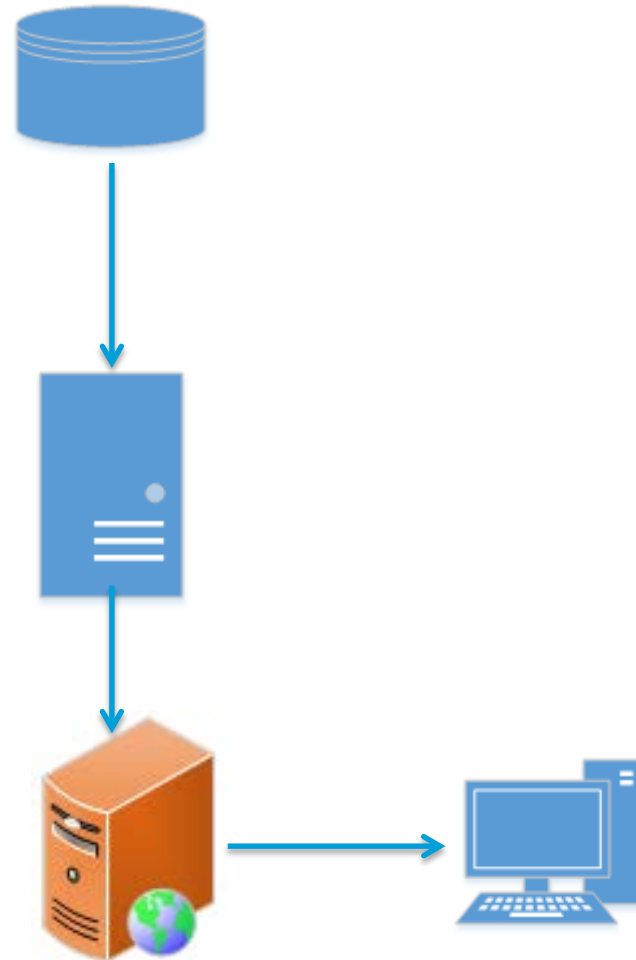
July 2017

The logo for The Trust for Public Land, featuring a green square with a gradient from light to dark green. The text "THE TRUST FOR PUBLIC LAND" is written in white, uppercase letters, stacked vertically within the square.

THE
TRUST
FOR
PUBLIC
LAND

Leveraging the Full Stack

- Data Tier
 - Registered File Store
 - MS SQL Server (SDE)
 - Postgre SQL Data Store
- ArcGIS Server Tier
 - 2 GIS Servers federated with a single ArcGIS Portal
 - ArcGIS Hosted Server
- Web Tier
 - Portal with Web Adaptor
 - Application Server
 - Host Custom Application build with ArcGIS JavaScript API



System of Record to a System of Engagement

- Where we started:
 - Authoritative GIS data and innovative modeling approaches
- Where we needed to go:
 - Engaging and empower decision-makers and leaders in the conservation community
- How we got there:
 - Web GIS...and a lot of patience

The Anatomy of a System of Engagement

September 2016



THE
TRUST
FOR
PUBLIC
LAND

1. Publishing and Serving Authoritative Data

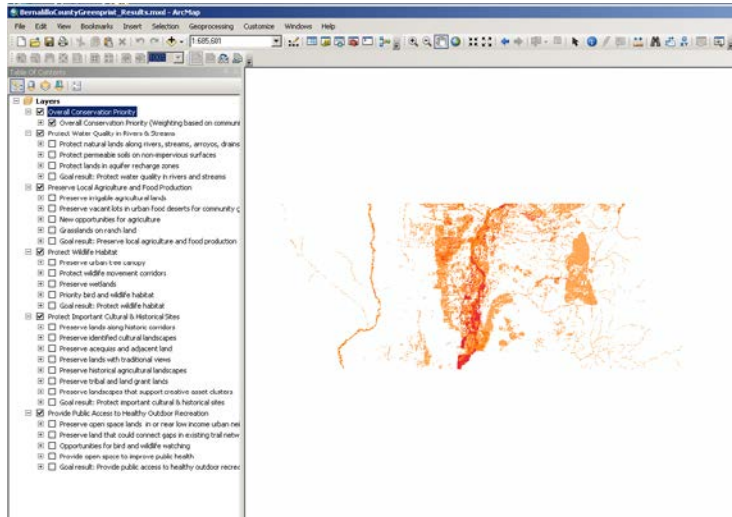
- Data Tier

- Registered File Store
- MS SQL Server (SDE)
- Postgre SQL Data Store



- Server Tier

- Registered File Store
- MS SQL Server
- Postgre SQL Data Store



ArcGIS REST Services Directory

[Home](#) > [services](#) > [Western](#) > [BernalilloCountyGreenprint_SecureResults \(MapServer\)](#)

JSON | SOAP

Western/BernalilloCountyGreenprint_SecureResults (MapServer)

View In: [ArcGIS JavaScript](#) [ArcGIS Online map viewer](#) [ArcMap](#) [ArcGIS Explorer](#)

View Footprint In: [ArcGIS Online map viewer](#)

Service Description: Secure BernCo results map service published by Patrick Smyth on 5/19/2017 for Mitch Hannon.

Map Name: Layers

[Legend](#)

[All Layers and Tables](#)

[Dynamic Legend](#)

[Dynamic All Layers](#)

Layers:

- Overall Conservation Priority (0)
 - Overall Conservation Priority (Weighting based on community poll) (1)
- Protect Water Quality in Rivers & Streams (2)
 - Protect natural lands along rivers, streams, arroyos, drains and acequias (3)
 - Protect permeable soils on non-impervious surfaces (4)
 - Protect lands in aquifer recharge zones (5)
 - Goal result: Protect water quality in rivers and streams (6)
- Preserve Local Agriculture and Food Production (7)
 - Preserve irrigable agricultural lands (8)
 - Preserve vacant lots in urban food deserts for community gardens (9)
 - Preserve identified cultural landscapes (10)
 - Grasslands on ranch land (11)
 - Goal result: Preserve local agriculture and food production (12)

2. Creating Engaging Applications

- Server Tier

- Registered File Store
- MS SQL Server
- Postgre SQL Data Store



- Web Tier

- Portal with Web Adaptor
- Application Server
 - Wordpress landing page
 - StoryMap
 - Configurable Map Viewers using ArcGIS JavaScript API

PLANNING AND GIS

HOME PROJECTS CONTACT

BERNALILLO COUNTY GREENPRINT

Story Map
Explore the Bernalillo County Greenprint Process

Data Description
Learn about the data used for the Greenprint Analysis

Bernalillo County Greenprint

The Bernalillo County Greenprint is a **community-driven conservation plan**. The Trust for Public Land worked with Bernalillo County Parks and Recreation Department and a local steering committee to develop the Greenprint based on community input. The purpose of the Greenprint is to guide where mill levy funds should be spent to protect open space and expand access to local parks and trails throughout Bernalillo County—including urban areas.

Scroll down to see the overall priority results of the Greenprint.

Bernalillo County Greenprint Project Reviewer

Enter an address or place

Help Logout

Layers

- County Data
 - Bernalillo County Parcel Boundary
 - Bernalillo County Project Area
 - Trails
 - County Commission Districts
 - Covered Lands
 - Land Ownership
- Analysis Results
 - Sum of all Community Lands Plan results
 - Overall Conservation Priority
 - Protect Water Quality in Rivers & Streams
 - Preserve Local Agriculture and Food Production
 - Protect Wildlife Habitat
 - Protect Important Cultural & Historical Sites
 - Provide Public Access to Healthy Outdoor Recreation

Map showing project area and analysis results.

3. Refining and Scaling based on User Needs

- Engaging Who? Meeting User Needs and Expectations

Bernalillo County Greenprint

Parcel Report

June 16, 2017

Page 1 of 2



Parcel Number: 101105944528410807	Acreage: 2.12
Owner Name: CITY OF ALBUQUERQUE	Address: 2400 VISTA GRANDE DR NW
Property Site City, State, ZIP: ALBUQUERQUE NM 87120	
Parcel Information	
Property Class (e.g. V = "Vacant"): V	Building/Improvement Value: 0.00
Deeded Assessed Acreage: 1.98	Total Value of Property and Improvements: 182200.00
Land Value: 182200.00	Taxable Value of Property and Improvements: 60727.00
Greenbelt/Agricultural Land Value : 0.00	

Parcel Filter Attributes	
Highest Suitability of County DNR Criteria Met: Yes	
Size Priority Score Met (Greater than 5 Acres; 1=Yes): 0.00	
Parcel Adjacent to Existing Park or Open Space: Yes	
Parcel In an Open Space Deficient Area: No	
Parcel In a Community Health Vulnerable Area: No	
Parcel on Existing or Former Land Grant: Yes	
Parcel Has No Structures: Yes	
Parcel Adjacent to an Acequia: No	
Identified Potential Public or Private Collaborators: Data not available	
Commissioner District: 1	
Conservation Strategy: Unknown	
Total Score of County DNR Preferable Criteria (Max=8): 4.00	

Legend

- Project Area Parcels



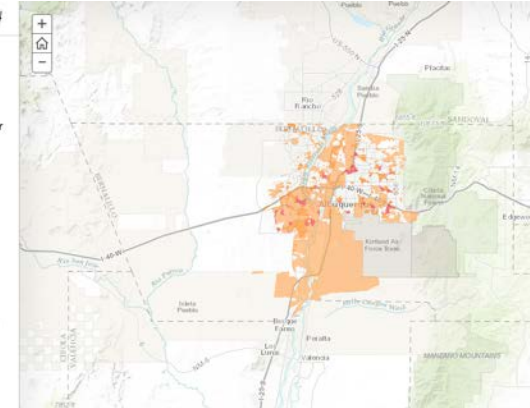
This report was created on June 16, 2017 using the Bernalillo County Greenprint interactive mapping site. It is for informational purposes only. The providers of this report disclaim any and all warranties, express or implied, including fitness for a particular purpose or merchantability, and make no representation that the report is complete, accurate, or error free. Use and reliance on this report is at the sole risk of the party using same. © 2017 The Trust for Public Land.

Provide the public with healthy outdoor recreation

The map to the right displays the Provide Public with Healthy Outdoor Recreation priorities identified in the Bernalillo County Greenprint. These areas represent the best opportunities for using open space protection to expand access to opportunities for healthy outdoor recreation. The Provide Public with Healthy Outdoor Recreation Priorities shown in the map to the right were created by combining the criteria results using weights derived by the project Technical Advisory Team.

Areas in **dark red** are very high priorities and **light orange** are moderate priorities. All areas that are classified as a Moderate, High, or Very High priority are expected to provide significant benefits to that resource and are shown in the interactive maps to the right. (Note: areas that are classified as Very Low, Low, or Not a Priority do not represent an area of focus as these areas are not expected to provide a significant benefit to that resource and therefore are not shown on the maps.)

The weights for each criteria are as follows:



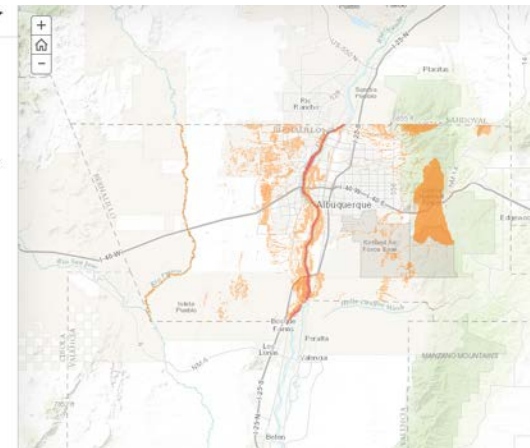
Protect wildlife habitat priorities

The map to the right displays the Protect Wildlife Habitat priorities identified in the Bernalillo County Greenprint. These areas represent the best opportunities for using open space to protect wildlife habitat. The Protect Wildlife Habitat Priorities shown in the map to the right were created by combining the criteria results using weights derived by the project Technical Advisory Team.

Areas in **dark red** are very high priorities and **light orange** are moderate priorities. All areas that are classified as a Moderate, High, or Very High priority are expected to provide significant benefits to that resource and are shown in the interactive maps to the right. (Note: areas that are classified as Very Low, Low, or Not a Priority do not represent an area of focus as these areas are not expected to provide a significant benefit to that resource and therefore are not shown on the maps.)

The weights for each criteria are as follows:

- Urban Tree Canopy (10%)
- Protect Wildlife Movement Corridors (30%)
- Preserve Wetlands (10%)
- Priority Wildlife and Bird Habitat (40%)
- Known Locations of Threatened/Endangered Species (10%)



Questions?
