



# USING A SINGLE ARCPRO PROJECT

---

To publish services for an organization

# Table of contents

1 The Problem

2 The Solution

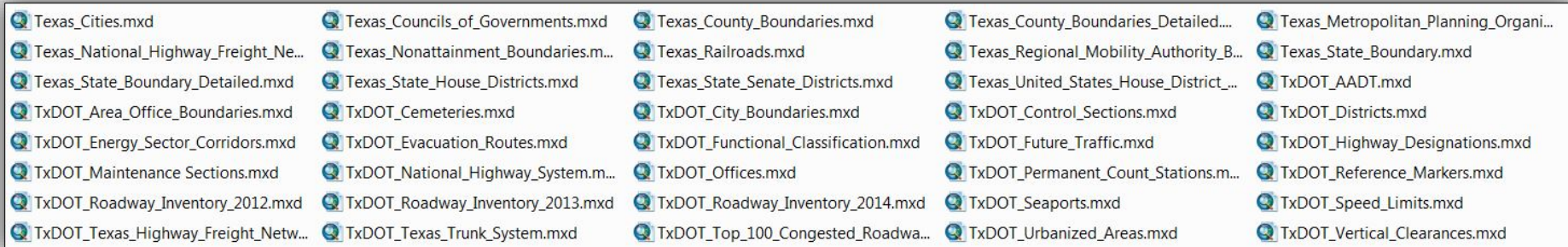
3 The Transition

4 Quality Assurance

5 Publishing / Overwriting Services

# The Problem

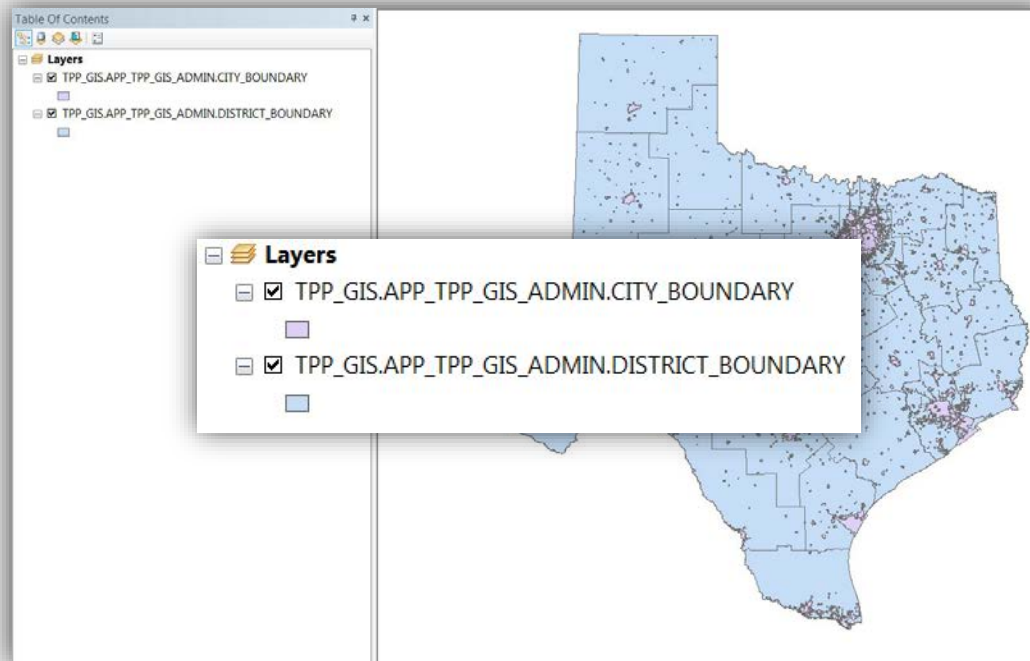
- Manage over 40 individual MXDs for each service layer



- In ArcMap, add one layer for each mxd

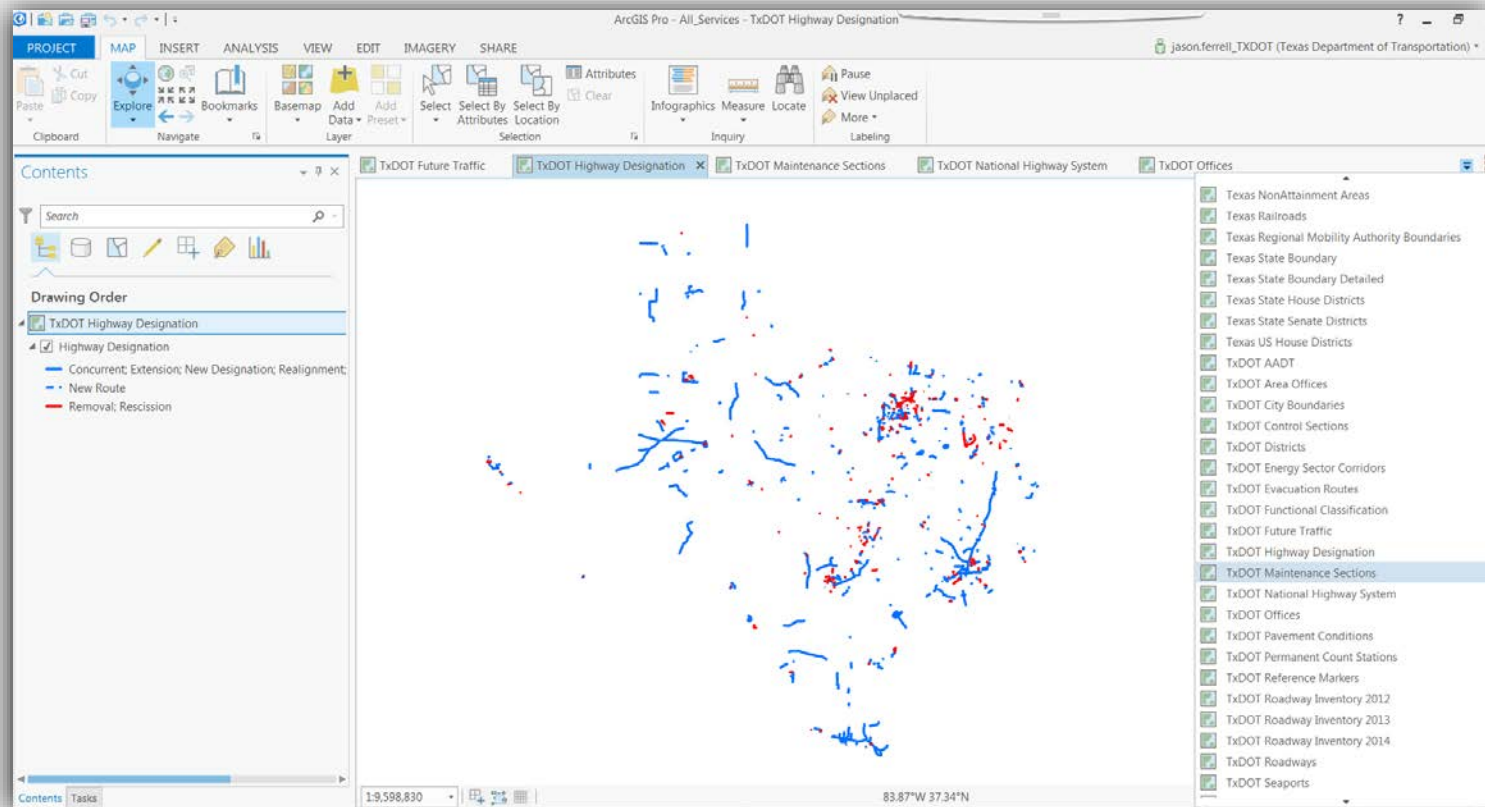
# The Problem

- You may publish multiple layers in a single service
  - however, this is not the typical scenario
- The layer name cannot be changed after the service is published
  - Have to delete the service and start over again if name changes



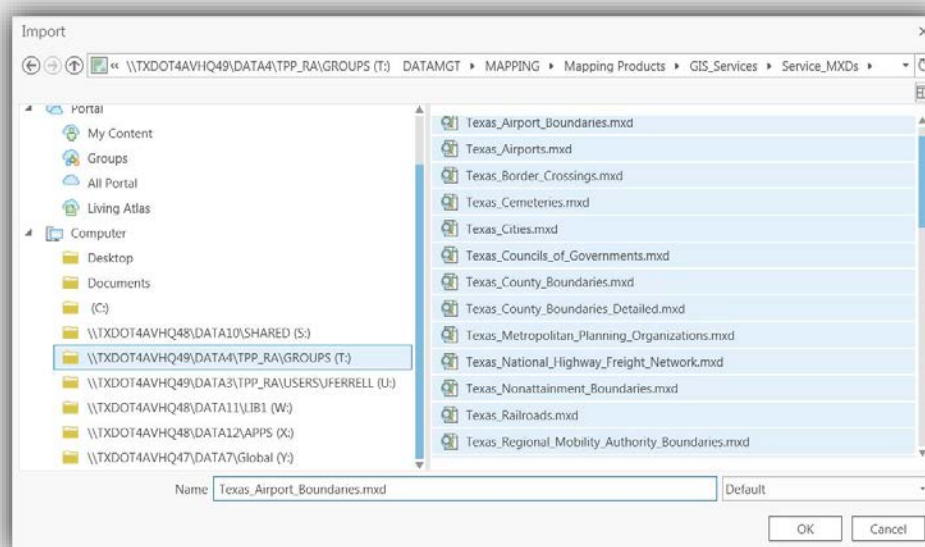
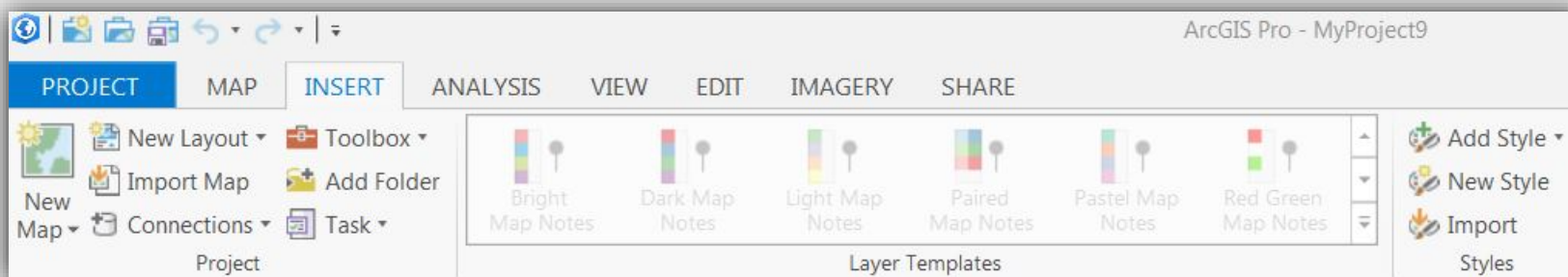
# The Solution

- Manage all service layers within a single ArcPro Project
  - All service layers are easily updated, shared, and consumed in desktop or web applications



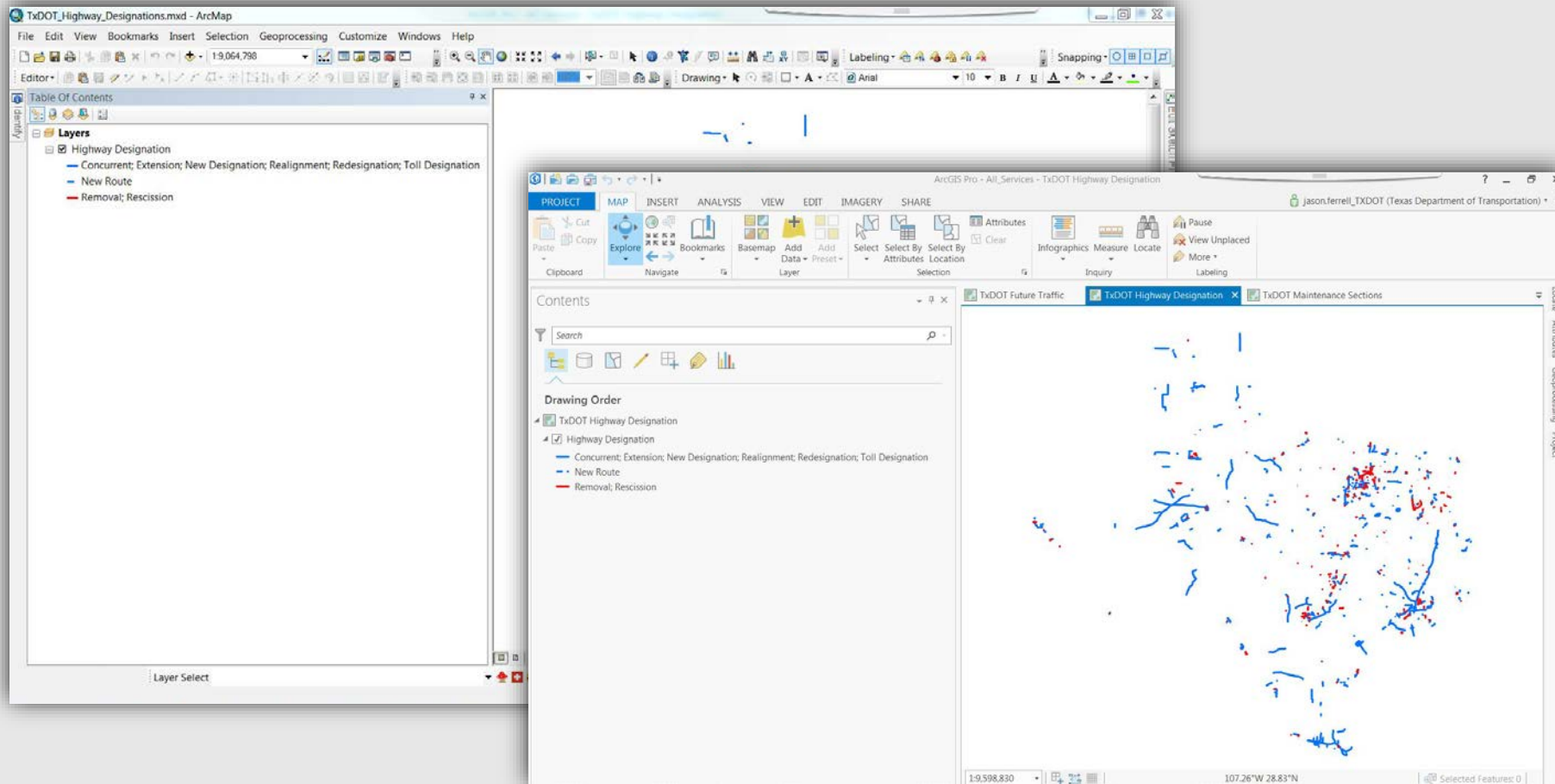
# The Transition

- TxDOT imported all existing mxds into one ArcPro Project



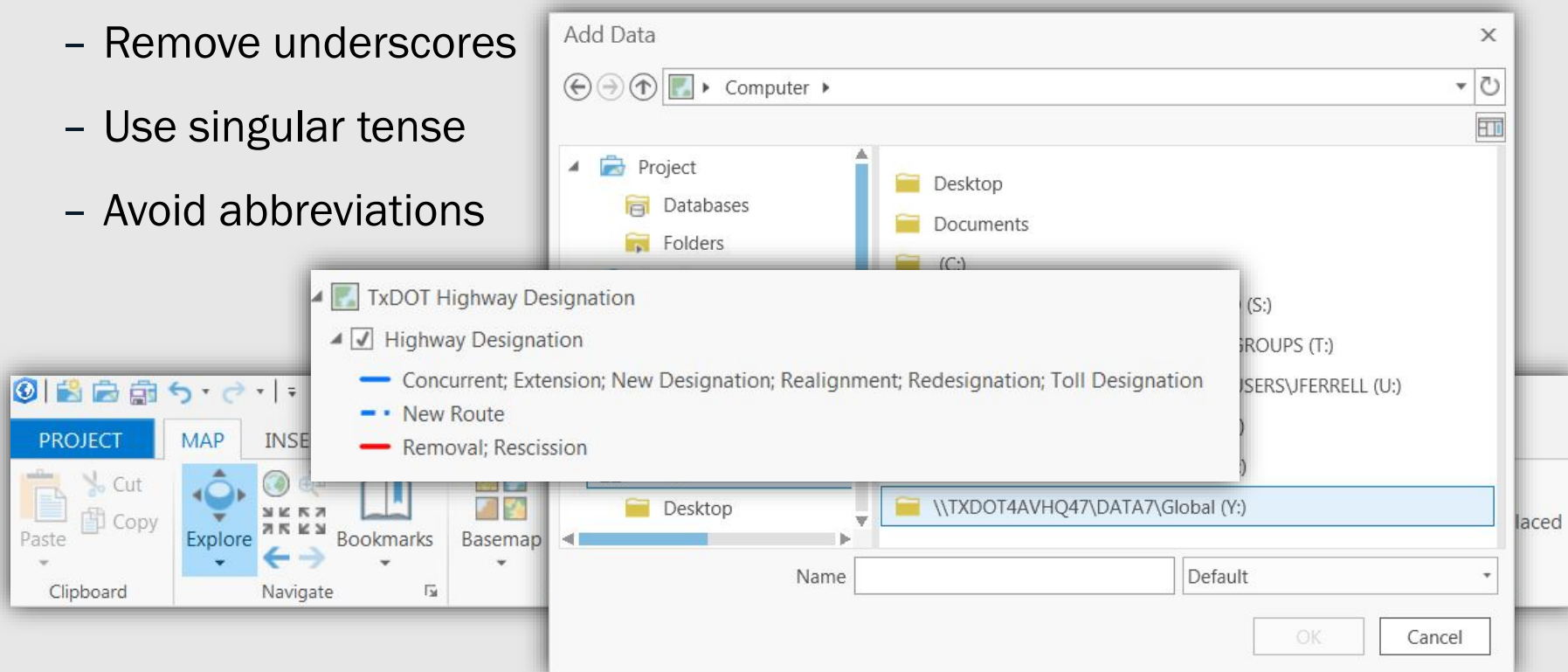
# The Transition

- The symbology and layer names are retained from ArcMap



# The Transition

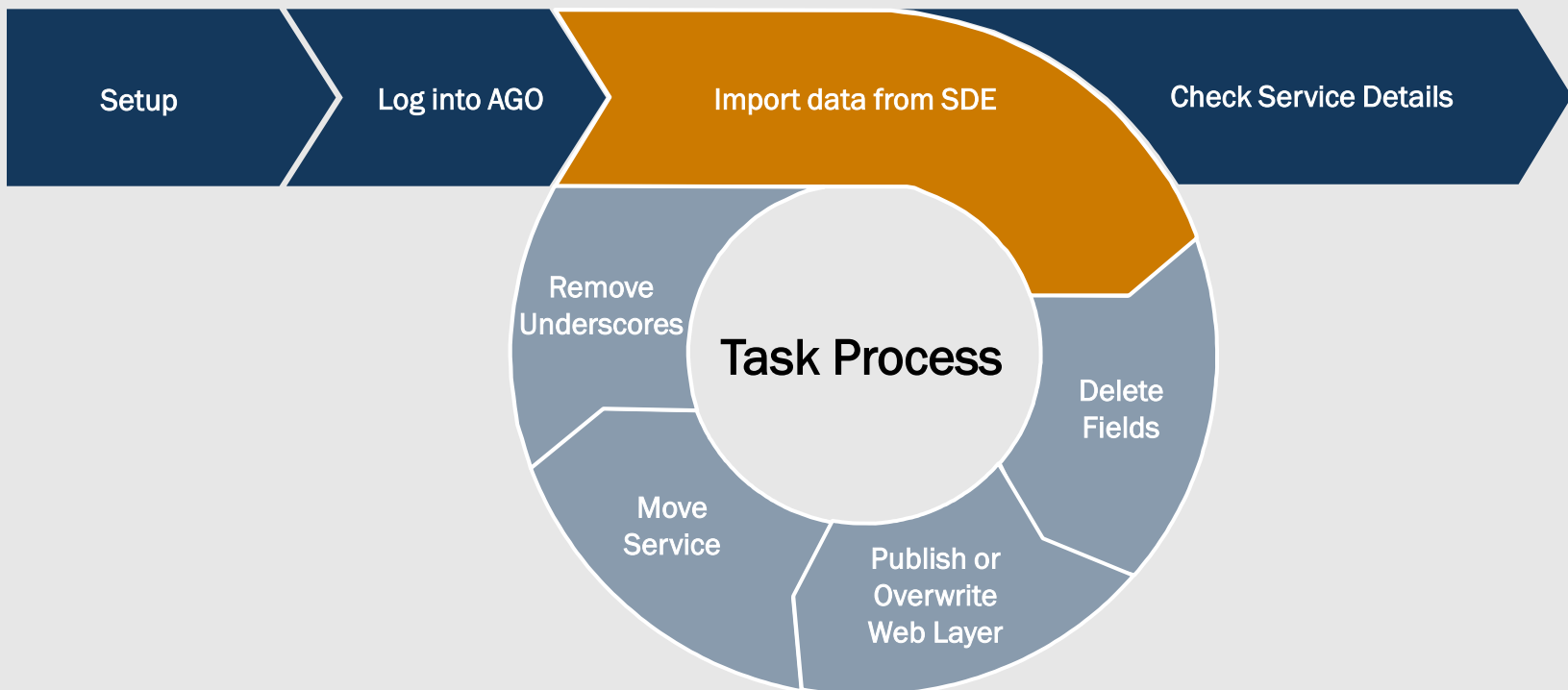
- Alternatively, you can add each layer from an SDE or local drive to a single ArcPro Project by inserting a 'New Map' for each layer
- Rename the layer in your table of contents to appear the way you would like to see it appear when the user adds the data to their own map.
  - Remove underscores
  - Use singular tense
  - Avoid abbreviations





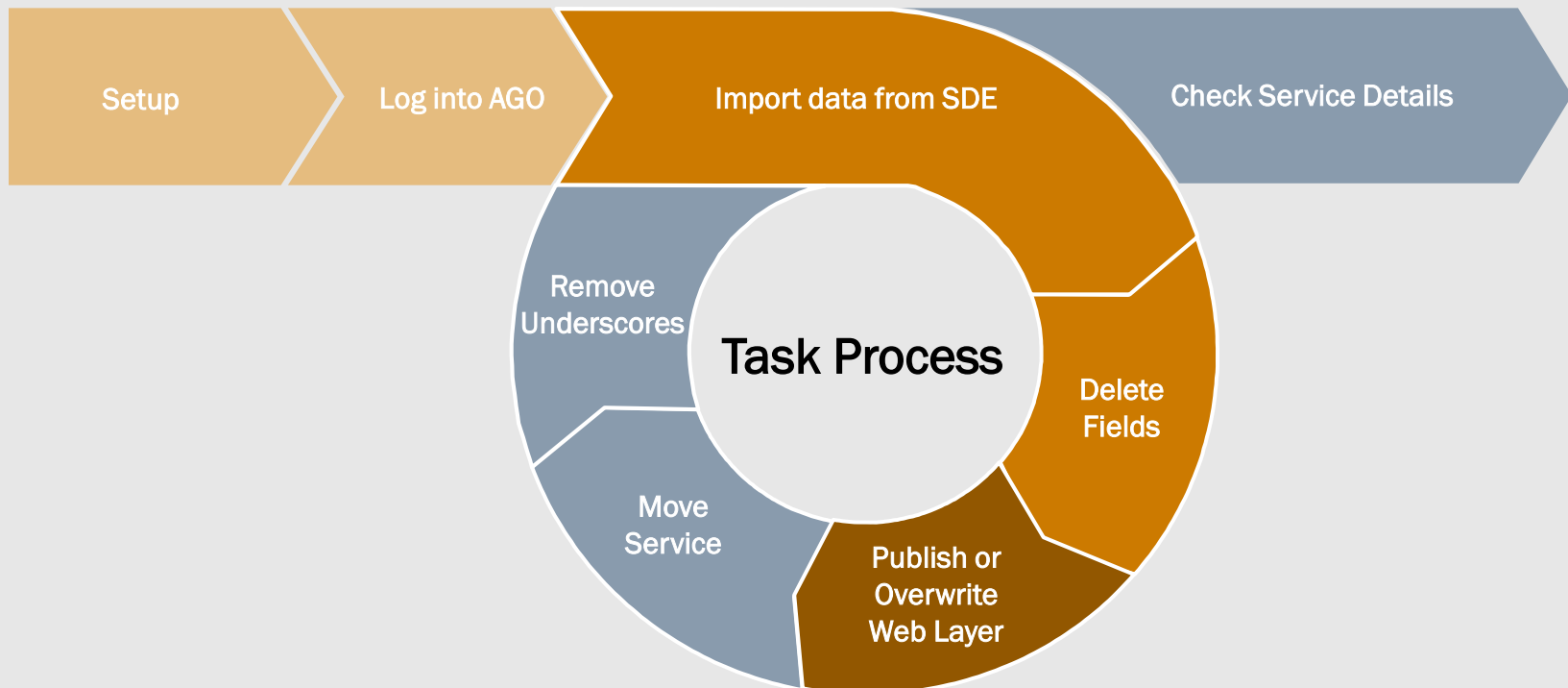
# Using tasks for quality assurance steps

- Before publishing a service, it is run through an 8-step **Task** for quality assurance
- The Task is a set of preconfigured steps that guide TxDOT GIS staff through a best-practice workflow to ensure consistency and quality in each published service layer



# Using tasks for quality assurance steps

- **Setup** by checking attribute table of feature class for editor tracking fields
  - If they are not removed, log into AGO, **import** a fresh copy of the data from TxDOT SDE to local drive, **delete** the fields, and then **publish** the service
  - If they are removed, log into AGO and **publish** the service directly from TxDOT SDE (Comanche)



# Using tasks for quality assurance steps

- **Publish/Overwrite** – Fill out or confirm all fields
  - Name: *Use a prefix of either Texas or TxDOT; are we the OPR*
  - Layer: *Features*
  - Item description: *Use metadata from the Item Description*
  - Tags: *Ensure that Texas, TxDOT, and TPP are present*
  - Sharing Options: *Everyone*

Overwrite Web Layer

Overwrite Official\_Services\Texas Border Crossings...

General | Configuration | Content

Name:  
Official\_Services\Texas Border Crossings

Layer Type  
Features

Item Description

Use the item description from the web layer  
 Use the item description from the map or layer

Summary:  
Bridge and border crossing points that connect Texas and Mexico.

Tags:  
Border Crossings X International X Texas X  
Mexico X Bridges X Dam X Ferry X

Sharing Options

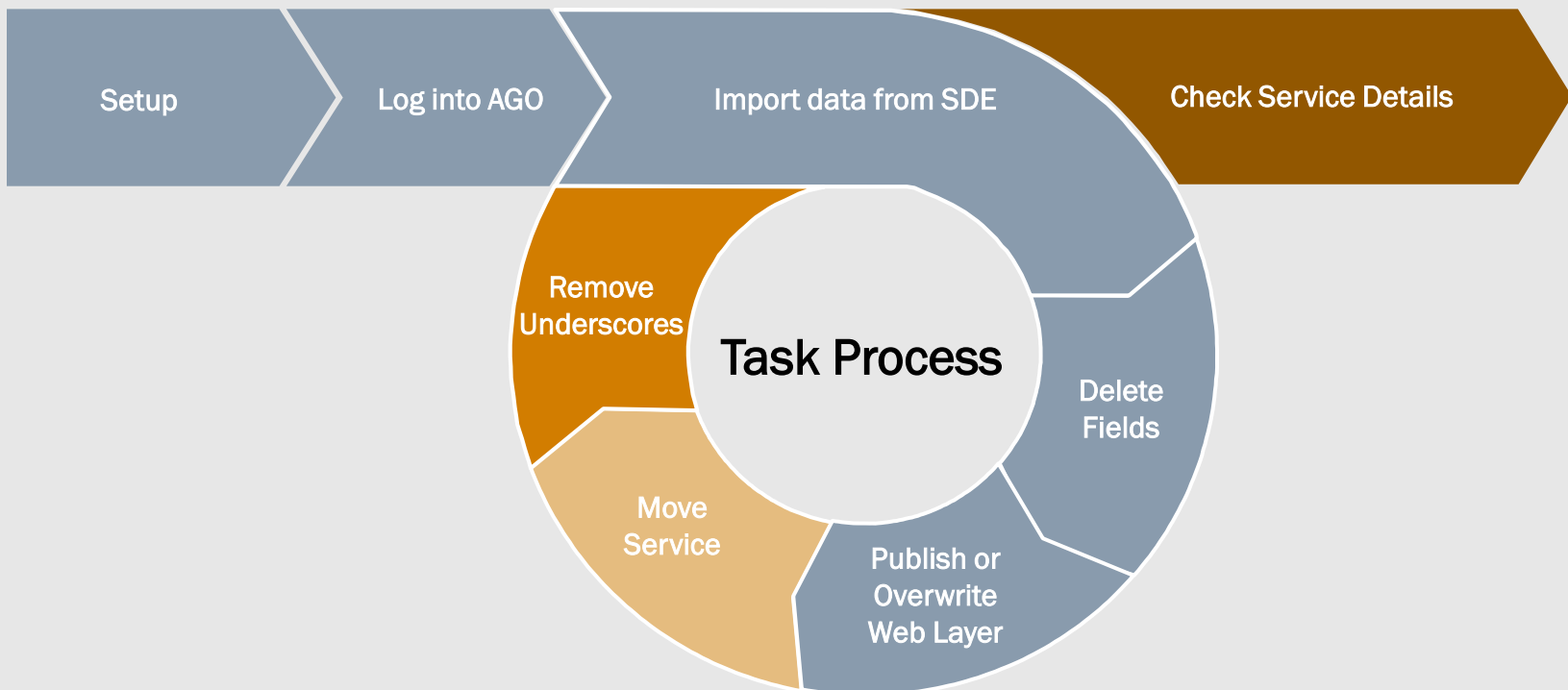
My Content  
 Texas Department of Transportation  
 Everyone  
Groups ▾

Finish Sharing

Analyze Publish Jobs

# Using tasks for quality assurance steps

- Move Service from root folder to the Official Services folder
- Remove Underscores from layer name in the service details page on AGO
- Check Service Details on AGO and ensure that *Export Data* and *Optimize Layer Drawing* are selected. Confirm service is being shared with *Everyone*.



# Questions?

Jason Ferrell, GIS Analyst

[jason.ferrell@txdot.gov](mailto:jason.ferrell@txdot.gov)

Texas Department of Transportation

Transportation Planning & Programming (TPP) – Mapping Group

Austin, Texas