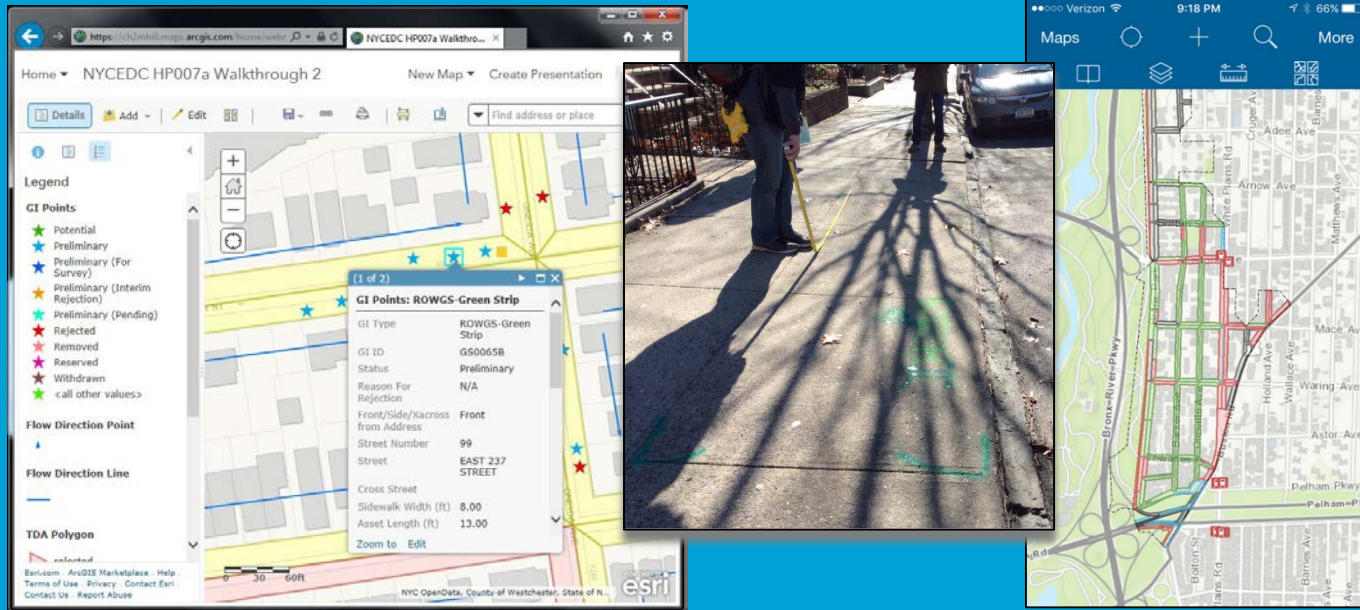


Siting Green Infrastructure in the Bronx with Esri Collector



Esri User Conference, San Diego

Session Title: Using ArcGIS for Sustainable Water Practices

Tuesday, July 11, 2017 3:15 PM - 4:30 PM

Room 23 B



Abstract

The NYC Economic Development Corporation and NYC Environmental Protection are installing green infrastructure in strategic areas of the city in order to meet water quality standards. CH2M is responsible for selecting sites and designing approximately 1,000 right-of-way green infrastructure installations in the 700-acre Bronx River combined sewer drainage area.

Project phases include desktop drainage analysis, selection of potential and final sites, subsurface exploration, site survey and design, and construction. ArcGIS is being used at each phase of the project, from data management on ArcServer, geoprocessing in ArcMap desktop, and fieldwork with Collector.

Data collection management is a key element to this project. CH2M developed geodatabase schema based on the project guidelines and deliverable templates. Data is managed in a central SDE geodatabase allowing the same data to be accessed from anywhere, with scripts and simple workflows developed to create maps and tables for different aspects of the project as needed. For example, the Department of Transportation and the Department of Parks and Recreation each require different output tables and photo reports for sites meeting specific criteria.

Please contact for
more information:

Danielle Hartman, GISP
Senior GIS Specialist
CH2M
22 Cortland Street, Floor 31
New York, NY 10007
danielle.hartman@ch2m.com

Jennifer Cass, P.E.
Vice President - Capital Program
New York City Economic Development Corporation
110 William Street
New York, NY 10038
jcass@edc.nyc