

# Regional N-G-9-1-1 PSAP Project

Roanoke Valley Virginia

# Project Success

- NextGen ready 9-1-1 data
  - Validating addresses and getting into NextGen 9-1-1
  - Capital region is pushing. Building their own Esinet to build NextGen 9-1-1
  - NextGen 911 compliant
- Proper Response Areas
  - Specific problem areas- resolving response agency
  - Never a bad dispatch
    - Can you provide statistics on calls – or number of trouble calls?

# Project Success

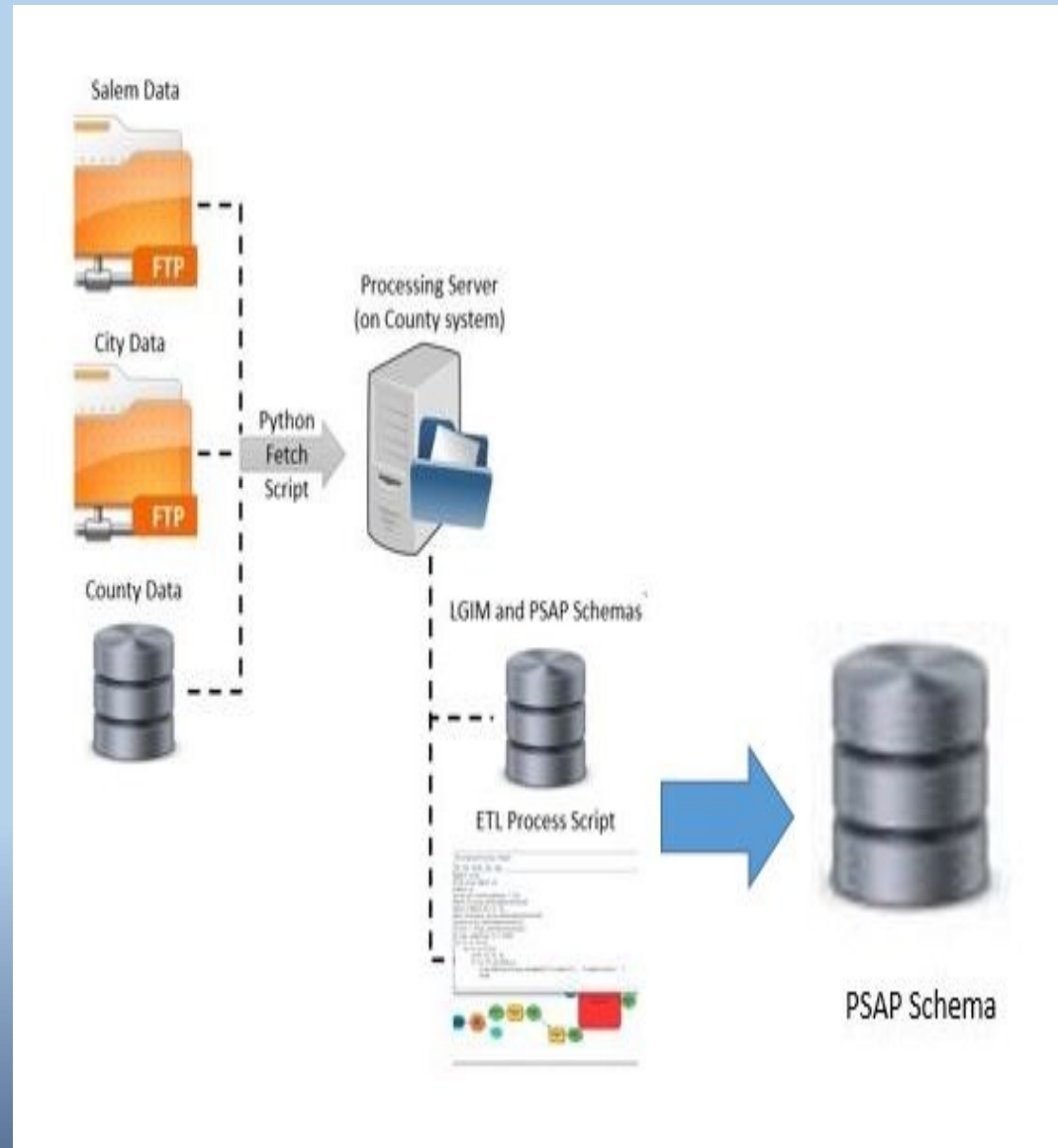
- Cohesive Data
  - Grab the data and it's ready to roll and nobody has to do anything to it.
  - Love that when other entities update data we will get that.
  - A Nice homogenous dataset.
- Regional Data
  - A way to sustain it. A process in place so that when Salem adds a new street we can share that.
  - We get XY coordinates in other counties, but we don't have the data to plot that point.
  - Would be useful to have adjacent data.
  - We would love to have the whole region of data.
  - A database that we can all put data in and still take out and use.
  - Hoping to get a single kind of product that works for all the entities.

# Project Success

- Compatible CAD Data
  - Having data that fits into any CAD system would be ideal.
  - Just want a good map with useful information.
  - That is compatible with everybody's CAD.
- Really want PSAPs involved in this (it's 9-1-1 tax dollars after all)
  - What the PSAPs need is more important than what I need
  - PSAP Coordinators information they need
  - PSAP coordinators- make sure when we get mutual aid calls that we know where we are sending people.
  - Another goal is to getting each PSAP communicating regularly.

# Accomplishments

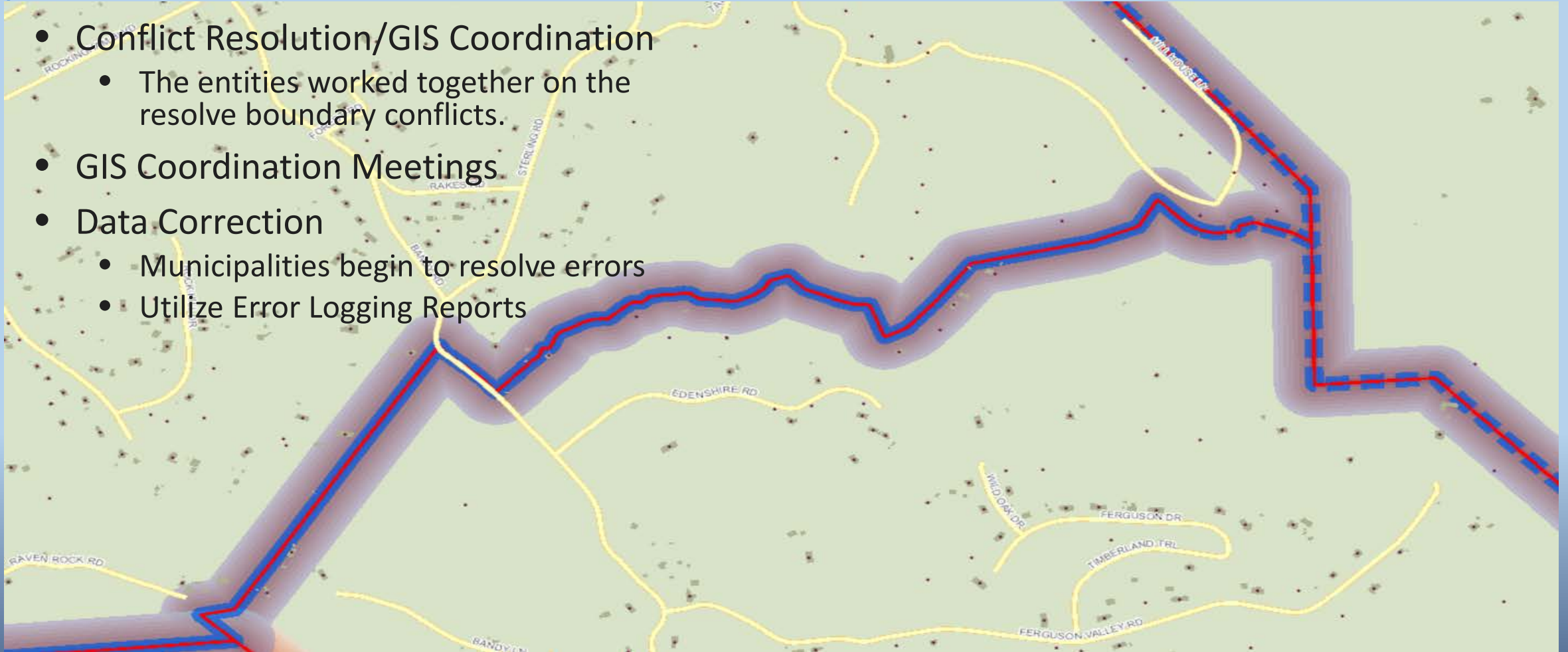
- Defined a PSAP schema
- Shared by 3 entities
  - Important, for the PSAP data to be compatible with NG 9-1-1 data model.
    - Incorporated Draft Data Model
      - Included Mandatory & Conditional Fields
  - Project Documentation



# Accomplishments

A

- Conflict Resolution/GIS Coordination
  - The entities worked together on the resolve boundary conflicts.
- GIS Coordination Meetings
- Data Correction
  - Municipalities begin to resolve errors
  - Utilize Error Logging Reports



# NextGen 9-1-1

These layers MUST be available for the Functional Elements Emergency Call Routing Function (ECRF) and Location Validation Function (LVF) to function and are required for call taking and dispatch operations:

- Road Centerlines
- PSAP Boundary
- Emergency Service Boundary (this MUST include Law, Fire, and Emergency Medical Service (EMS) which MAY be in separate layers
- *We Have!*

Other layers in this document that complete the minimum recommended GIS data for NG9-1-1 and E9-1-1 call taking and dispatch operations:

- Railroad Centerlines
- Hydrology Line
- Hydrology Polygon
- Cell Site Location
- Mile Marker Location
- PSAP Boundary
- *We Don't Have ☹️ Phase II Incorporation?*

# Acknowledgements

Wendy Peloquin

Geographic Information Services, Inc.

Office: 205.941.0442 x241 | Cell: 205.834.3976





- **Contact Information:**
  - **David Wray**
  - **[dwray@roanokecountyva.gov](mailto:dwray@roanokecountyva.gov)**
  - **1+540.777.8564 office direct**

Thank you!