

ArcGIS for Research on Marine Vessel's Air Pollution & Fuel Use

Biswajoy Roy
Marine Fellow

ESRI UC

July 12, 2017

The logo for the International Council on Clean Transportation (icct). It features the lowercase letters 'icct' in a bold, dark brown font. The letter 'i' has a small blue circle above it. Below the letters, the full name 'THE INTERNATIONAL COUNCIL ON CLEAN TRANSPORTATION' is written in a smaller, blue, uppercase font.

icct
THE INTERNATIONAL COUNCIL
ON CLEAN TRANSPORTATION

About ICCT



2% Global CO₂



8% Global CO₂ (2050)



Effect of HFO on the Environment



Photo courtesy of Sakhalin Watch and Club Boomerang.

Why we did this work?

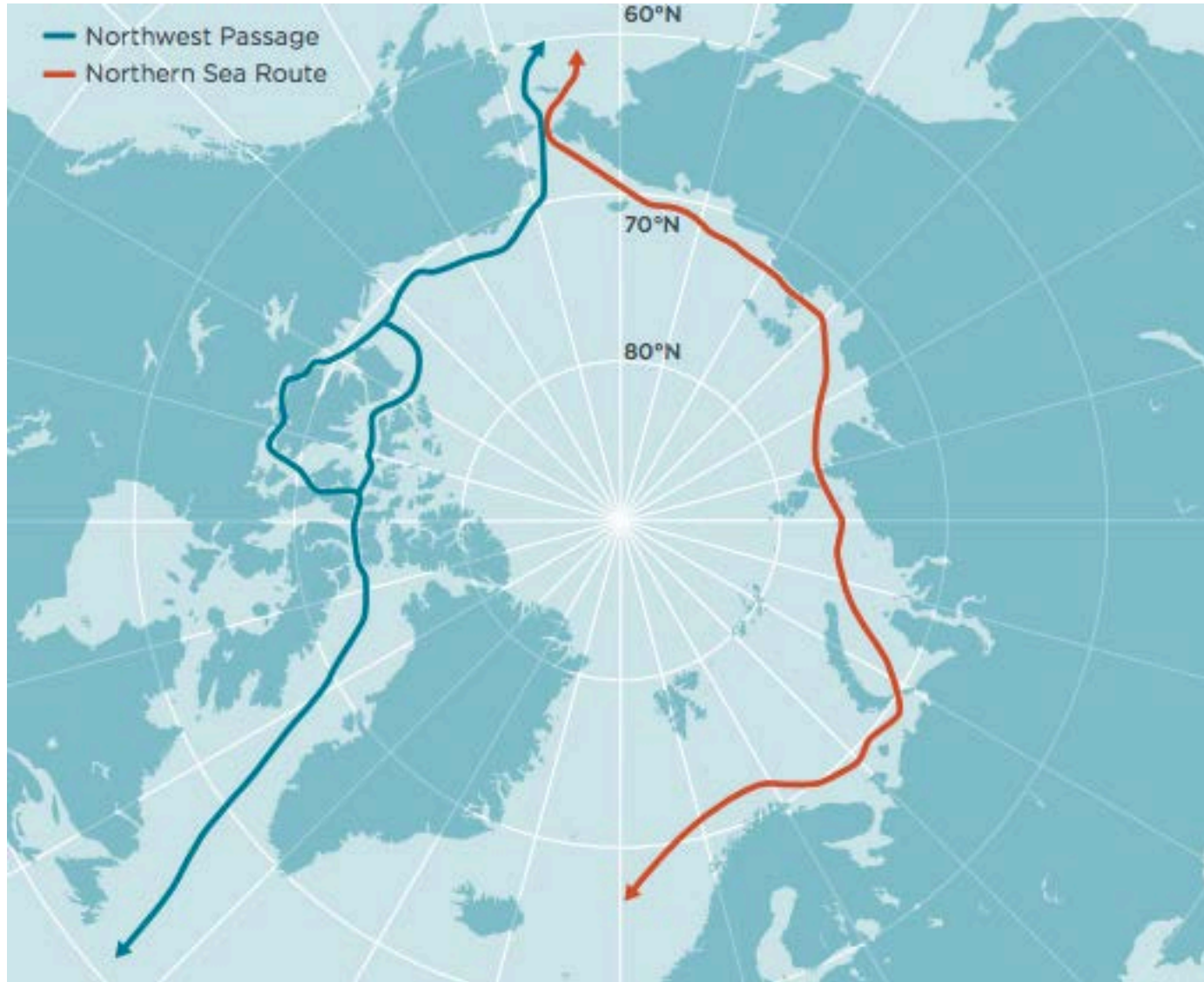
Arctic Definitions



Source: http://www.theicct.org/sites/default/files/publications/HFO-Arctic_ICCT_Report_01052017_vF.pdf

Why we did this work?

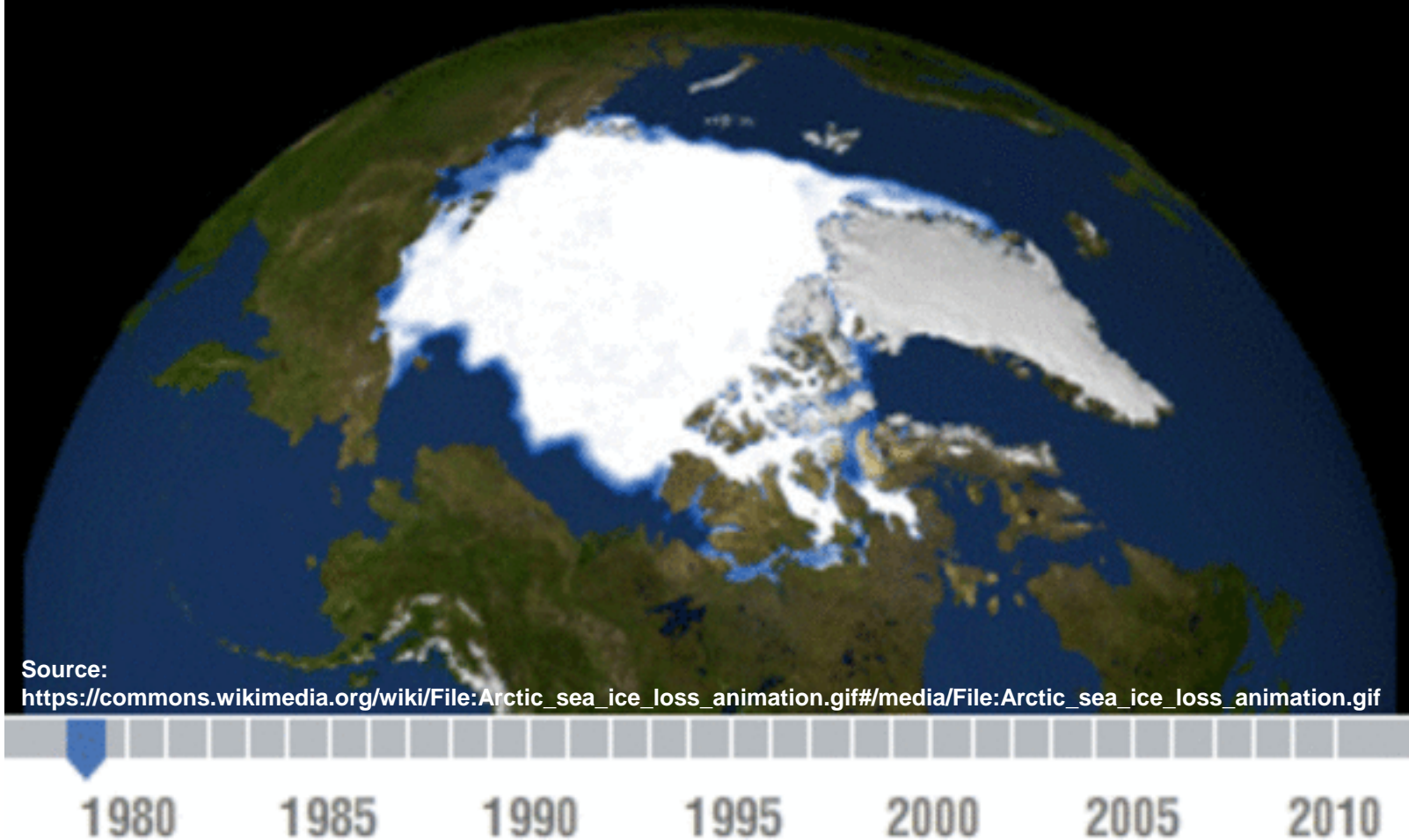
Opening up of new Sea Routes



Why we did this work?

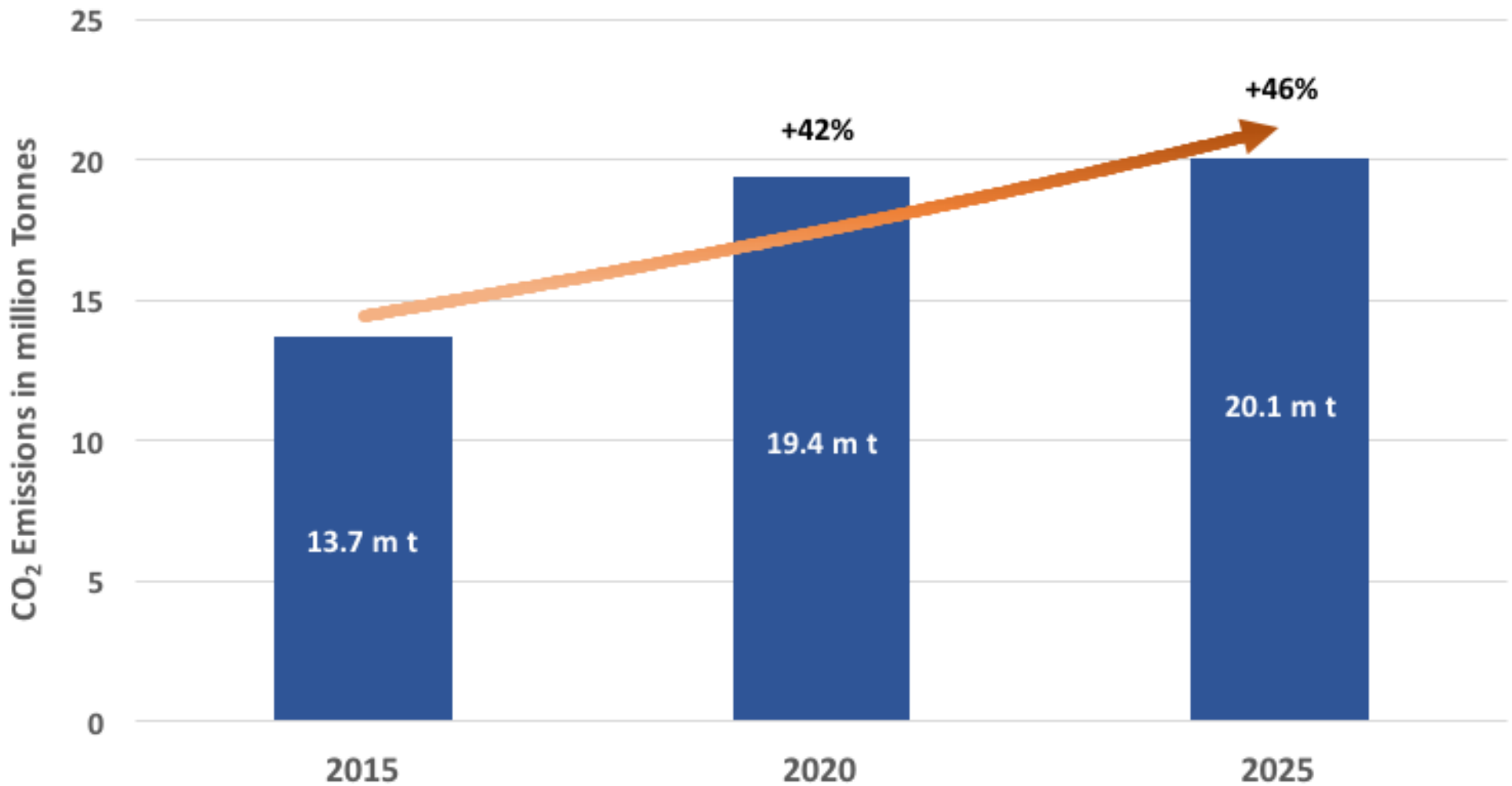
The Melting Ice

2016; 1.2°C above pre-industrial levels



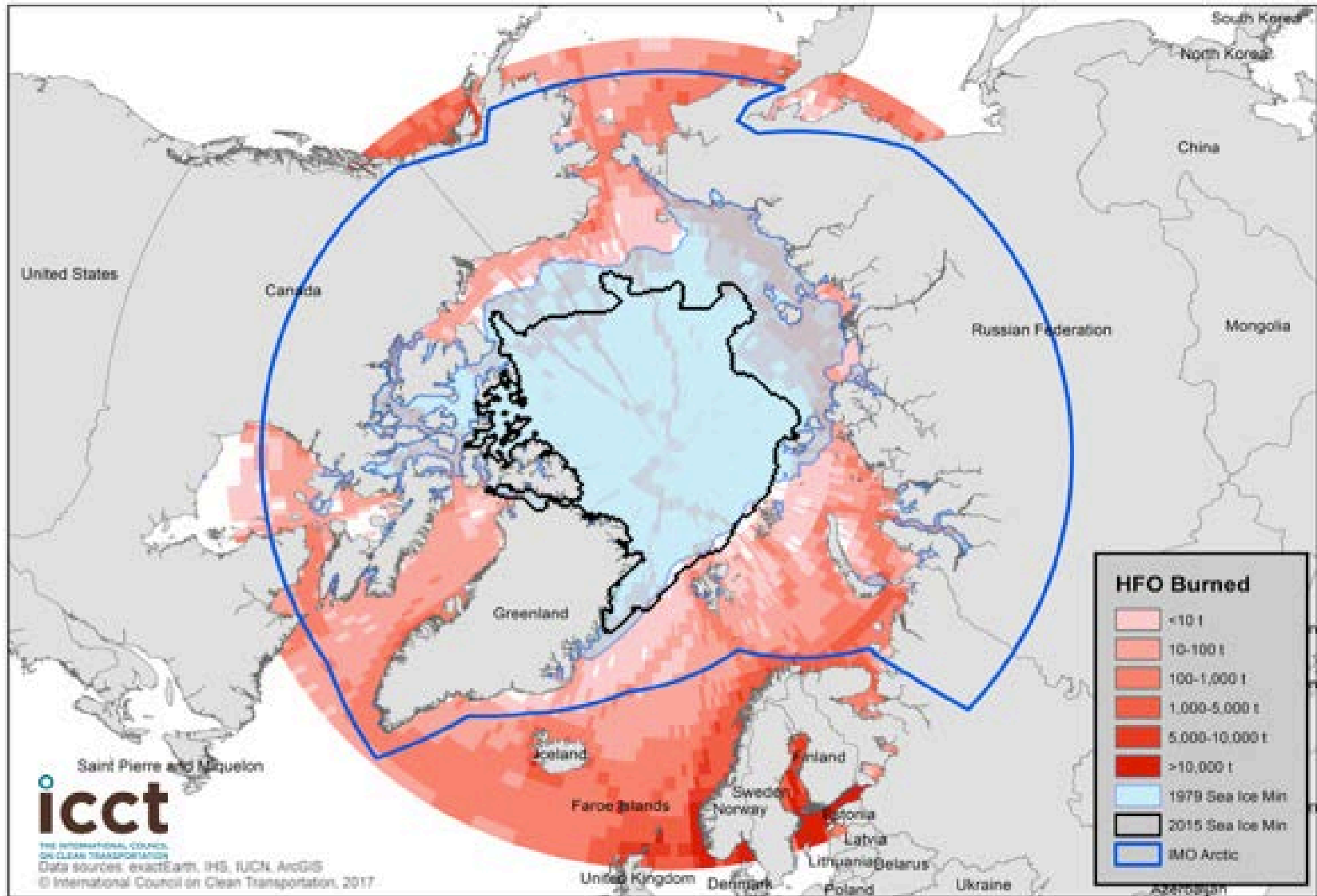
Why we did this work?

Projected Rise in CO₂ Emissions in the IMO Arctic



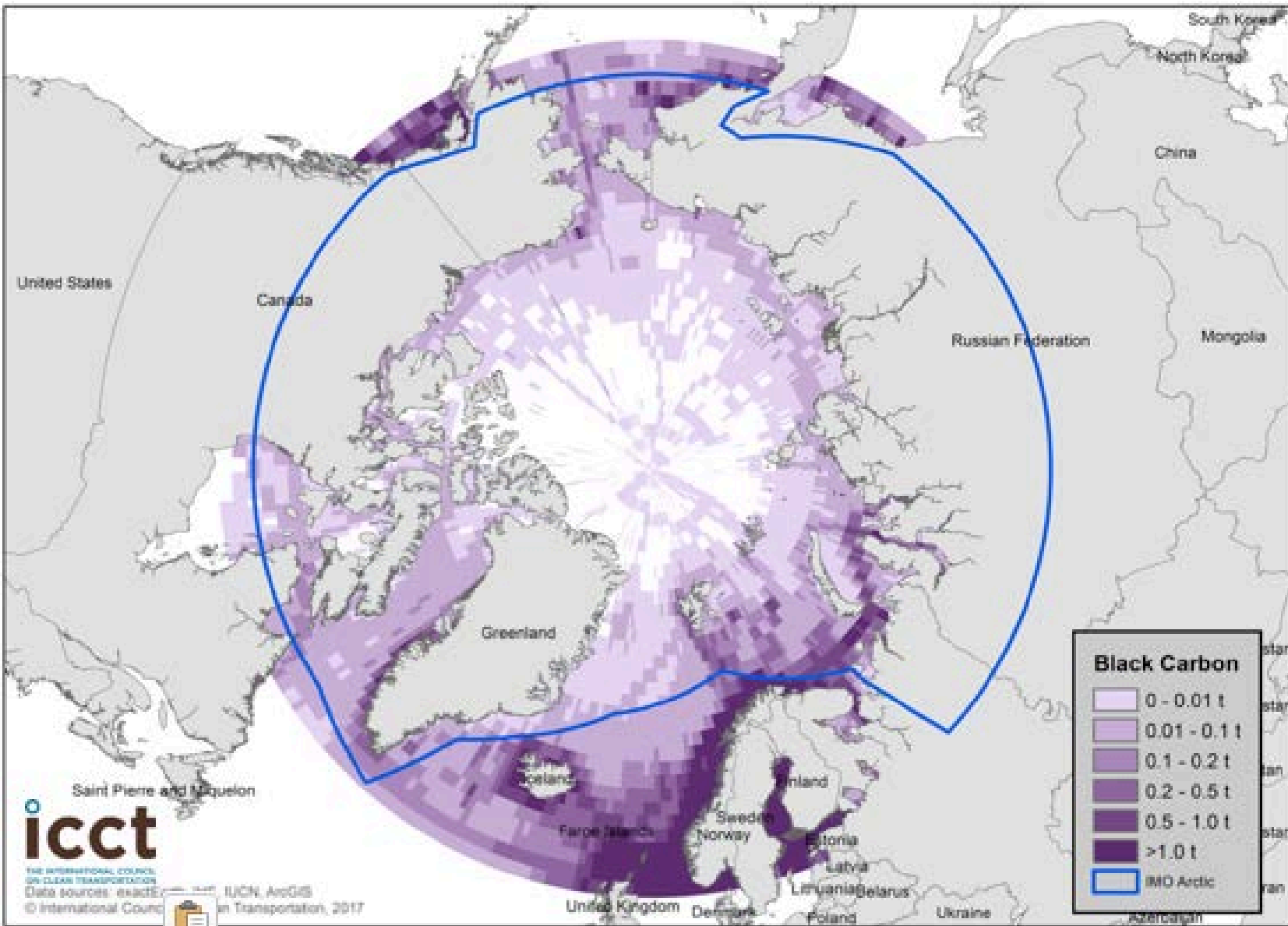
Aquatic Threats

HFO Use in the Arctic



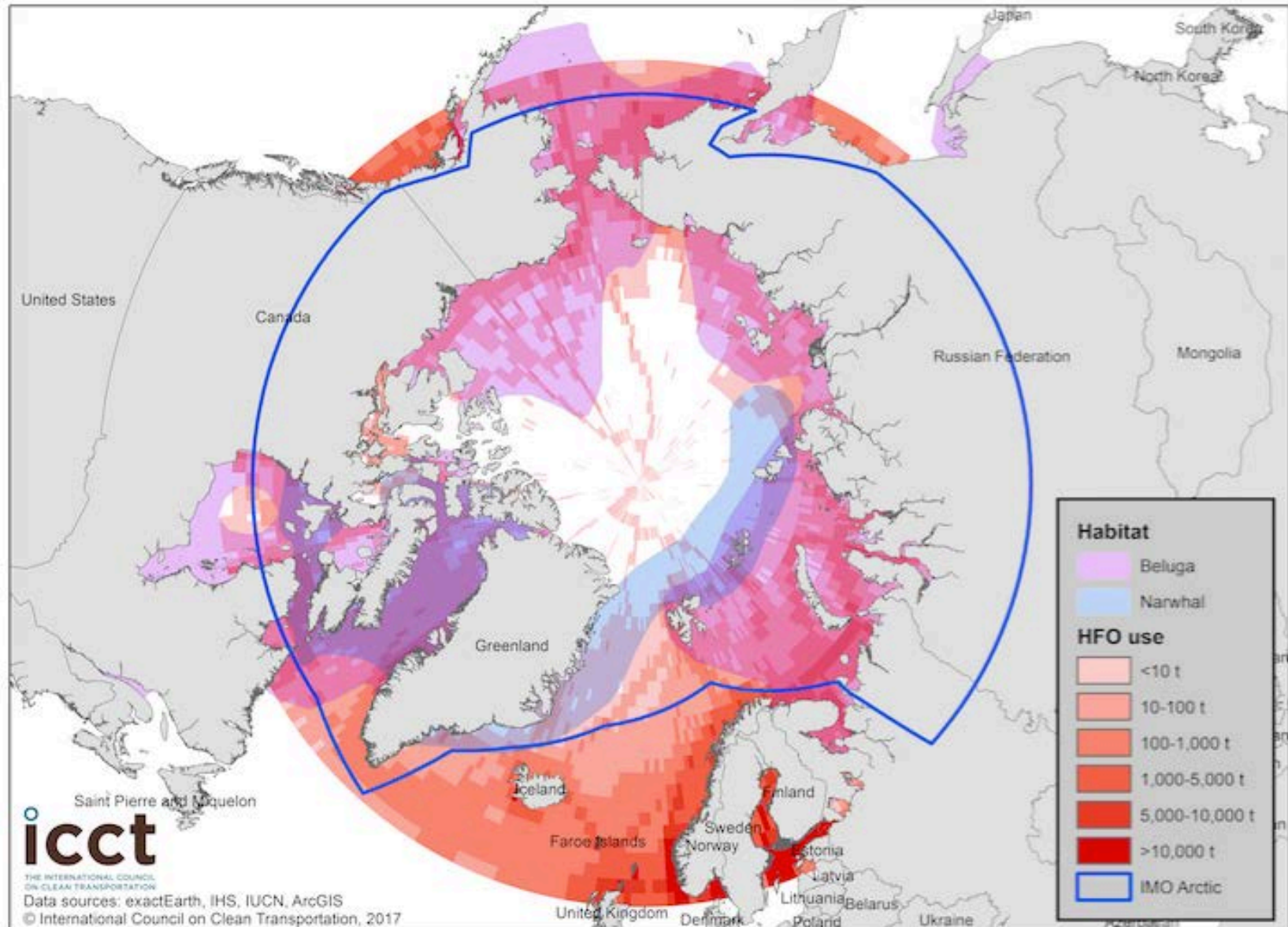
Atmospheric Threats

BC Emissions in the Arctic



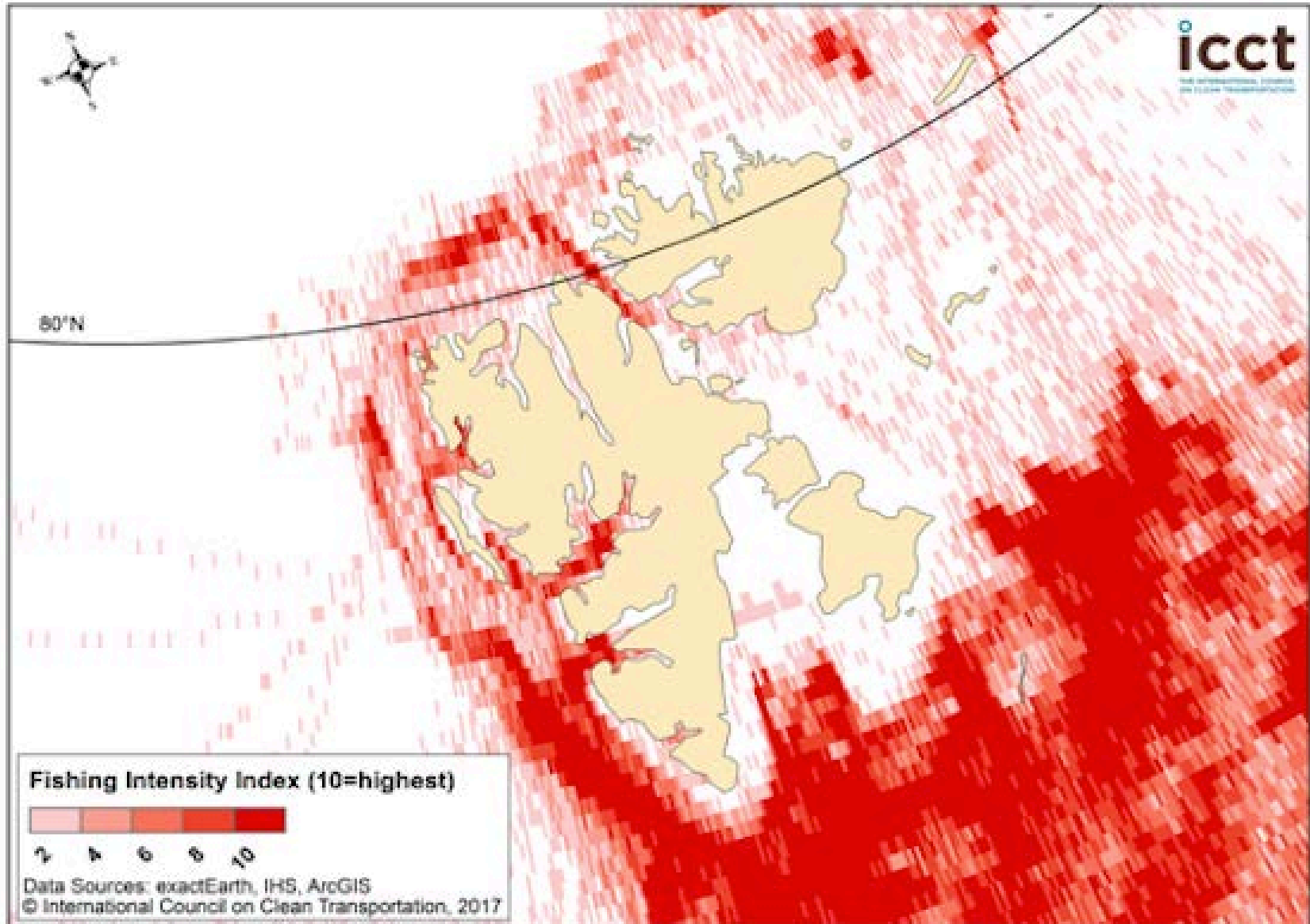
Threats to Endangered Species

Beluga Whales & Narwhal



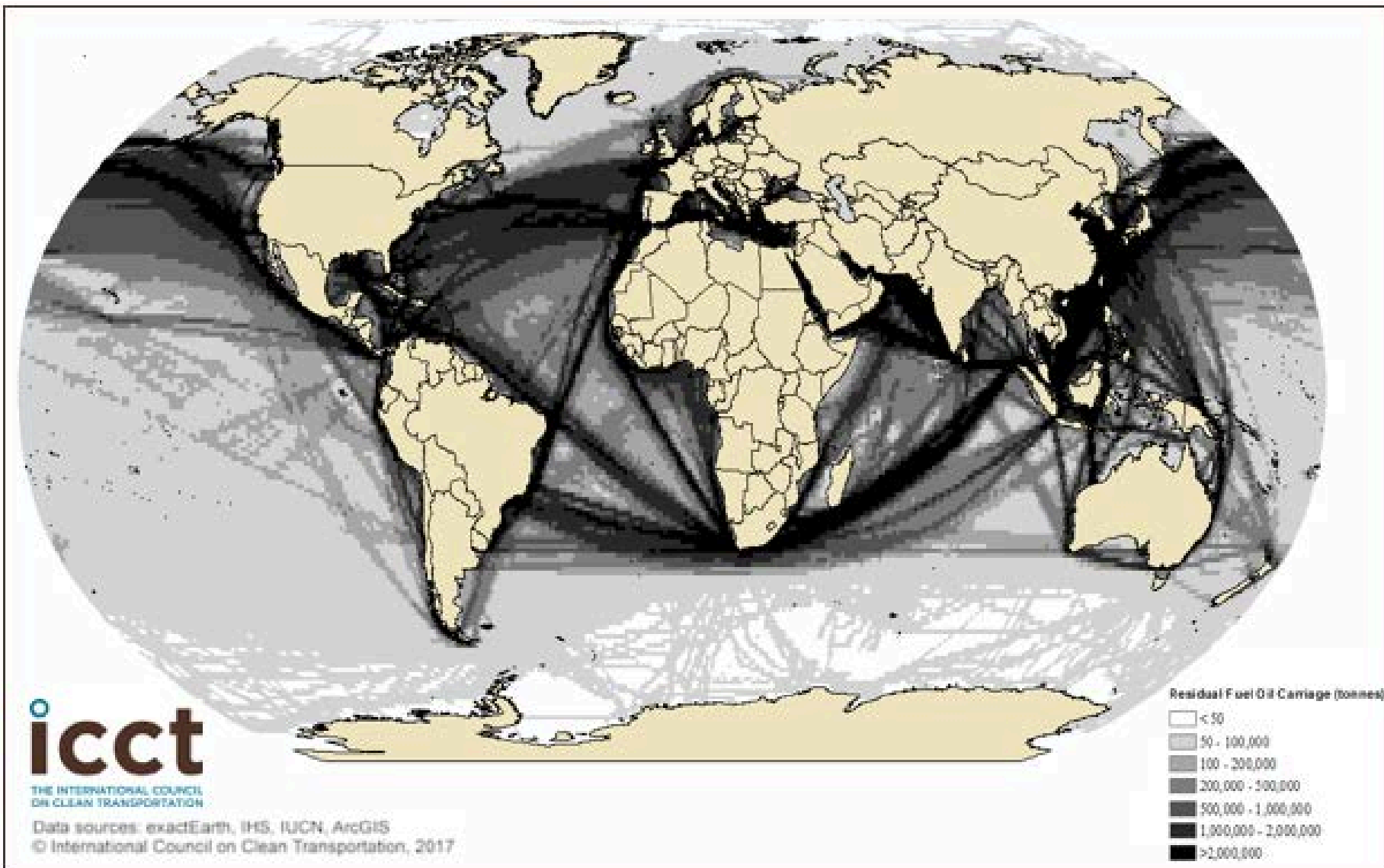
Threat to Remote Locations

Fishing Intensity near Svalbard Island



Expanding our Research on Global Scale

Global HFO Carriage



Why ArcGIS is important to our work:

- “A picture is worth a thousand words.”
- “The picture superiority effect.”
- Informing policy makers.
 - International Maritime Organization
 - Arctic Council

Thank You & Questions !

Biswajoy Roy
Fellow, Marine Program
International Council on Clean Transportation
b.roy@theicct.org
www.theicct.org

Acknowledgments:

Daniel Rutherford, PhD
Program Director, Marine Program

Bryan Comer, PhD
Researcher, Marine Program

Naya Olmer
Associate, Marine Program

Xiaoli Mao
Associate, Marine Program

Special thanks to Pisces Foundation, Climate and Clean Air Coalition (to reduce short lived climate pollutants) and ClimateWorks Foundation for funding our research