

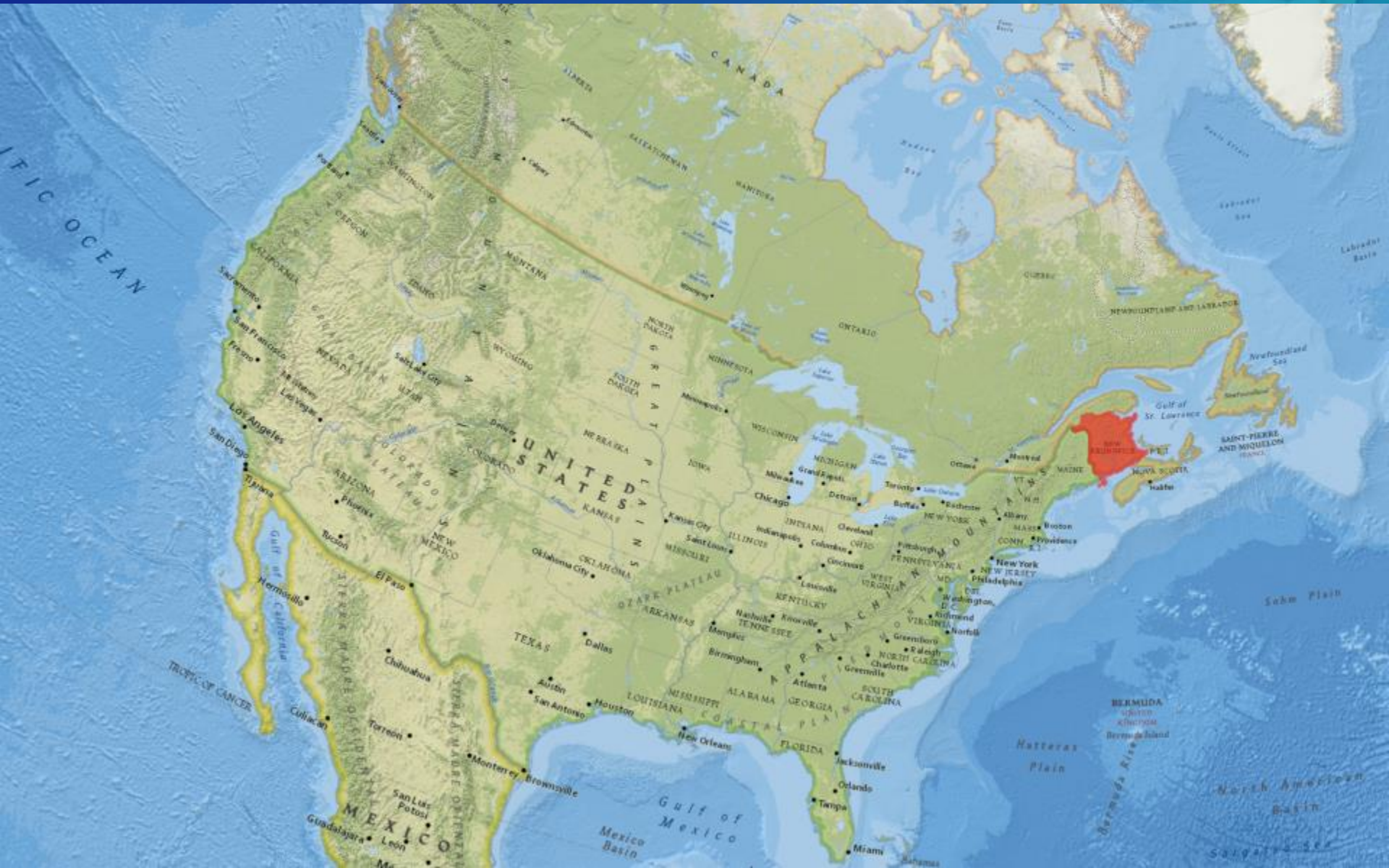


Leveraging 50 Year Old Historic Air Photos in Modern Day GIS

Yves Léger, Manager, GIS & Data Analytics, City of Saint John

Kevin Jones, Director, Marketing & Communications, PCI Geomatics

New Brunswick, Canada



Saint John, New Brunswick



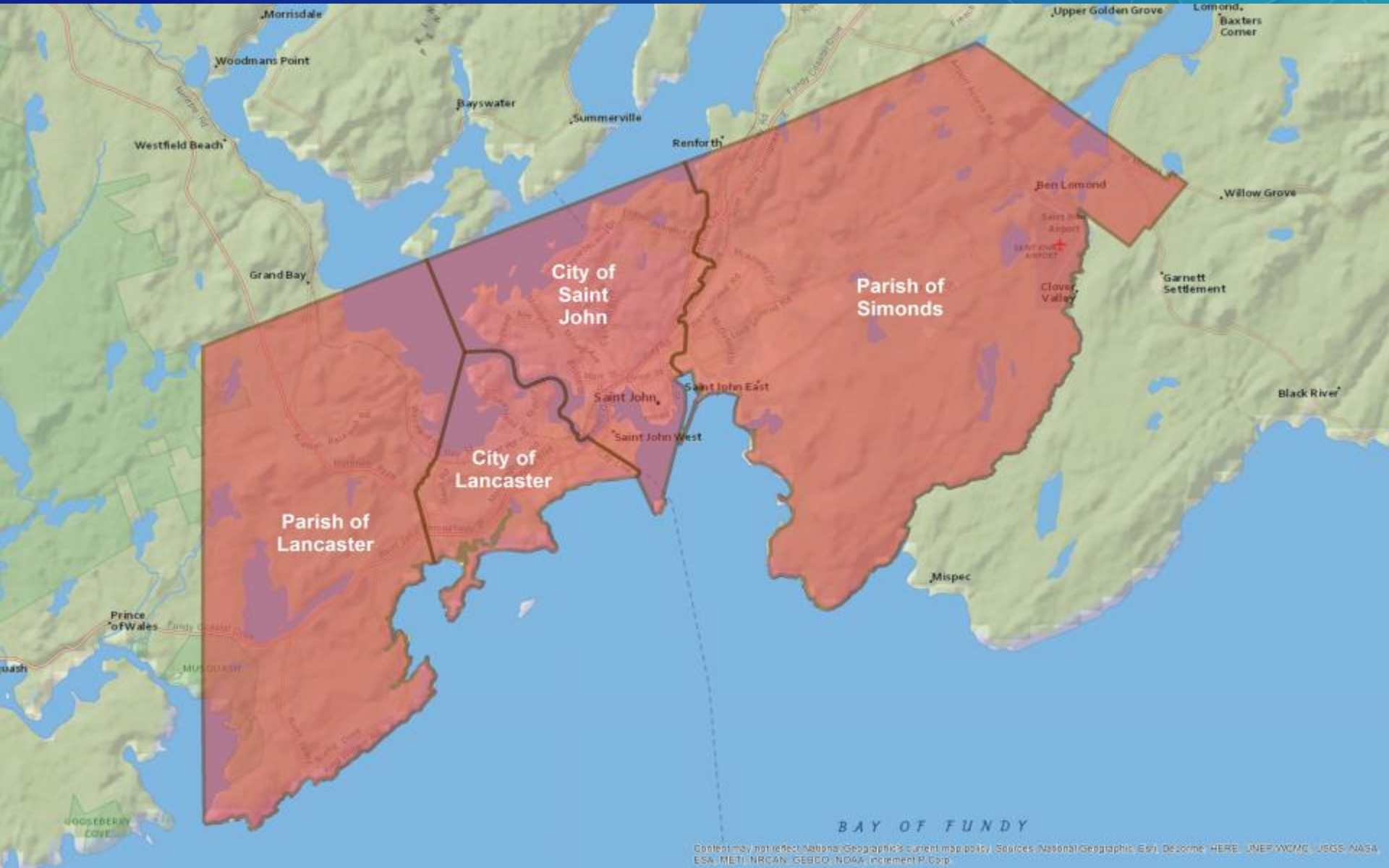
Background

Shortly after I first started working at the City, I found a box of 183 air photos from 1967 sitting on a shelf in the Planning Department.

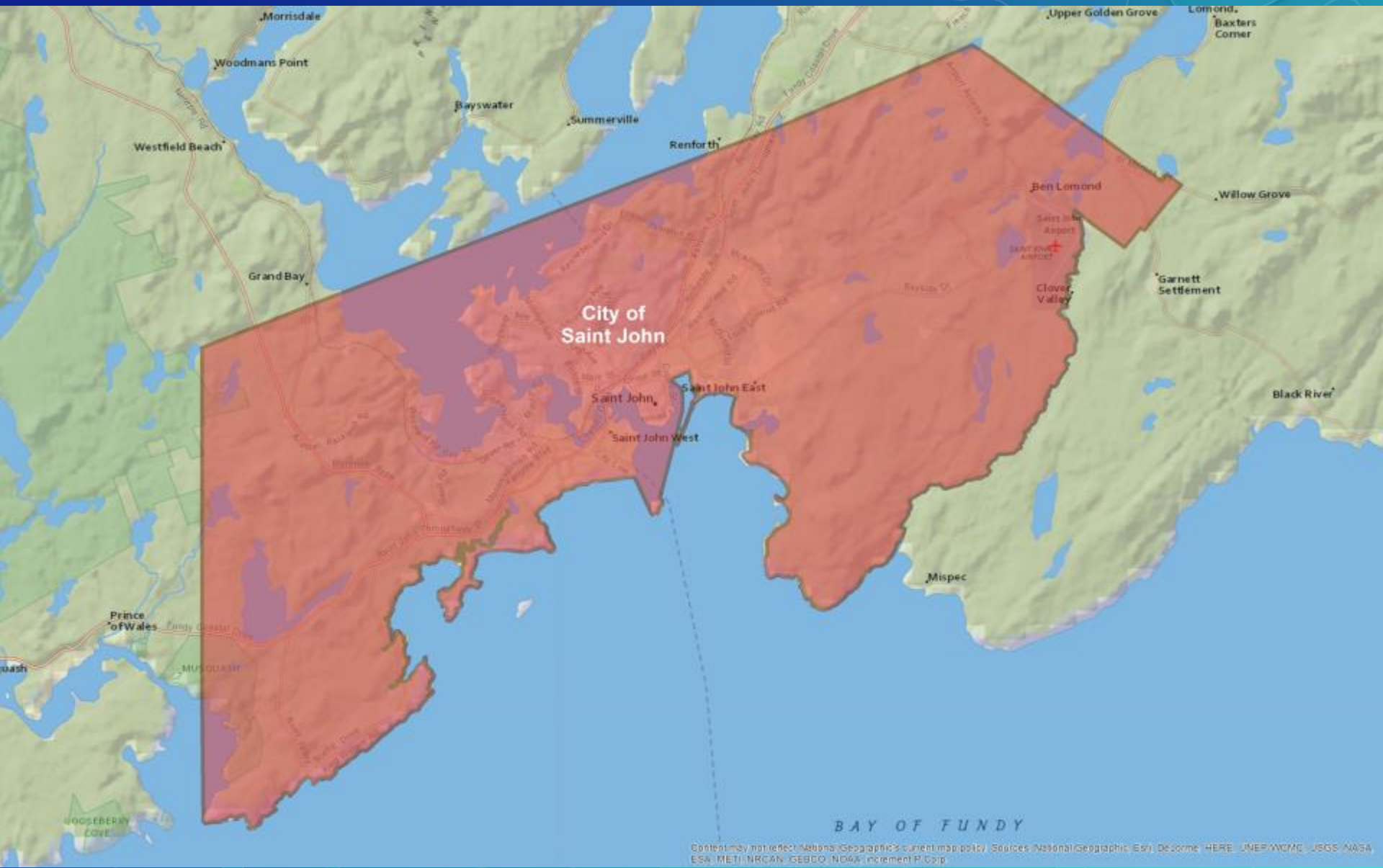
1967 is very significant date in Saint John's history because it was the year that the City of Saint John was amalgamated with the neighboring City of Lancaster, Parish of Lancaster and Parish of Simonds.

As a result of amalgamation, the City's area grew from 54km² to 366km².

Saint John Before 1967



Saint John as of 1967



Initial Efforts

Scanned all 183 air photos at 600dpi using a flatbed scanner capable of scanning 10" x 10".

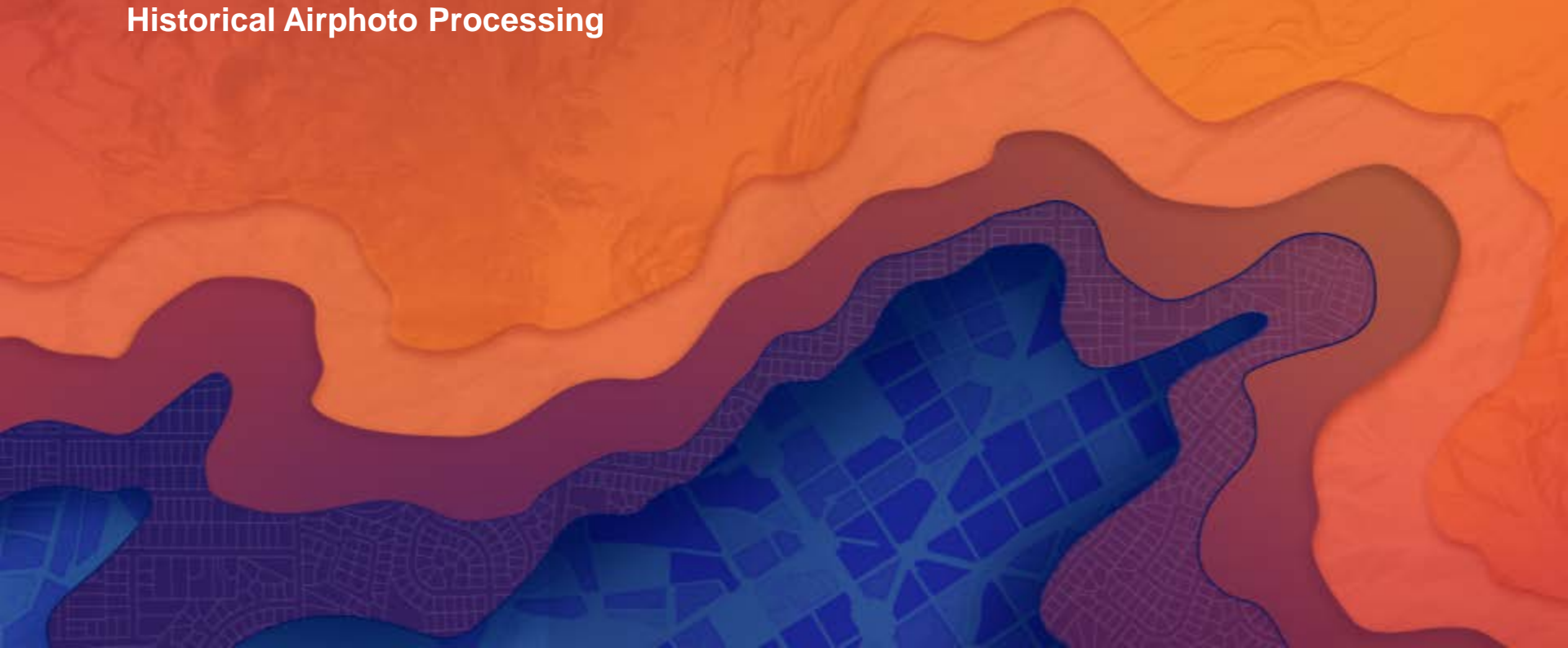
Created a public html web application to allow anyone to be able to view the individually scanned photos.

Made the scanned photos available to the public through the City's Open Data portal.

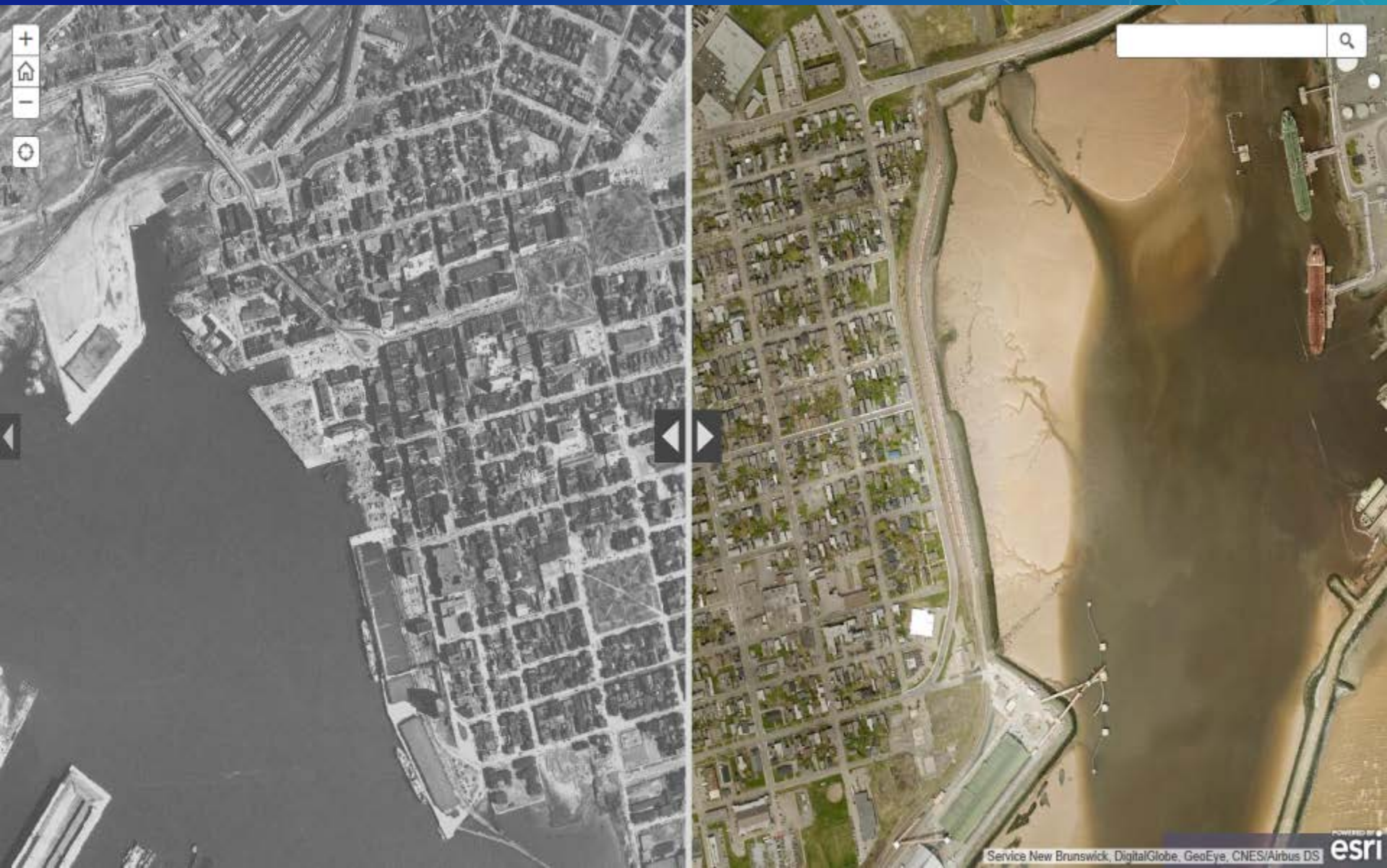
Created a mosaic using freeware, geo-referenced it and made it available to City employees using the Esri Flex Viewer.

The PCI Geomatics Solution

Historical Airphoto Processing



Open Data & Story Map App



Uses, Value and Benefits of a High Quality Historic Orthomosaic

Identifying what existed at a certain point in time (e.g.: private streets)

Locating where things used to be (e.g.: cold case, brown fields, etc.)

Visualizing urban sprawl, quarry expansions and coastal erosion

Calculating growth or loss of vegetation

Archeological research