

Using Web Templates to Replace Map Booklets

Jeff Cook, Outdoor Recreation Analyst
Idaho Department of Parks and Recreation

Old Way of Creating Maps

Subhead Here

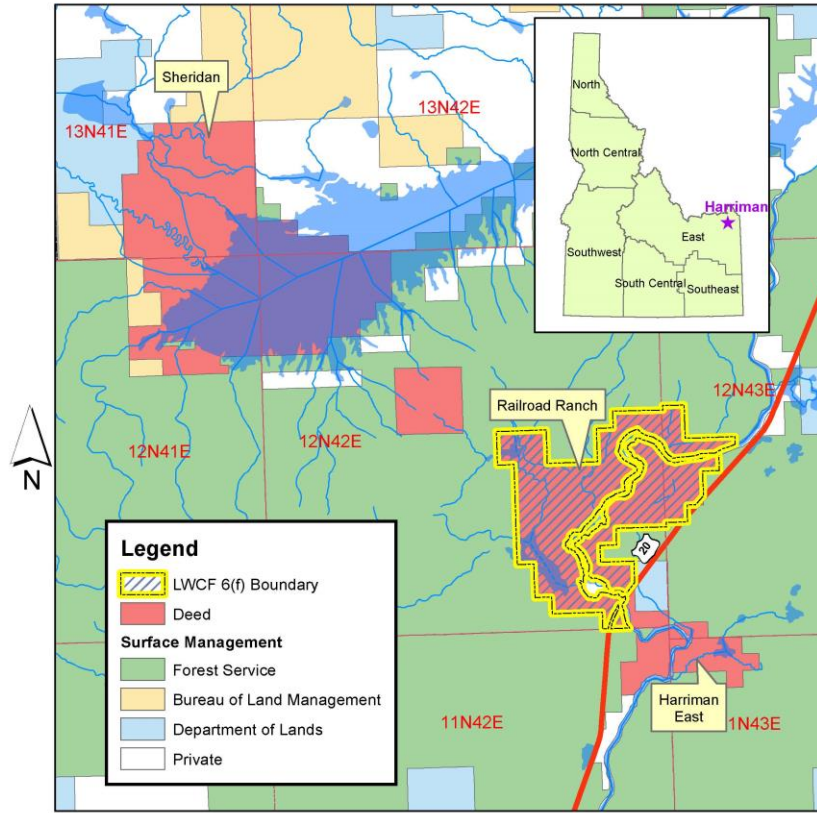
- Gather and Edit Data
- Organize Data into a personal geodatabase. Going away with ArcGIS Pro
- Create a map template to make maps consistent with one another in book
- With 45 different sites, that means 45 maps
- Export each MXD (for each site) to pdf.

Map Booklet Problems

- PDF Maps are Static. A single change requires an updated pdf
- Problems distributing to staff – not everyone pays attention to e-mail, updating e-mail list
- Limited information on the Print Maps.

Example Page from IDPR's Map Booket

Harriman State Park Deeded and Leased Lands



Official Park Name	County	Class	Acres	Description	Total Acres	6(f) Acres
Harriman State Park of Idaho	Fremont	N	4,305.12	1979 DE Harriman Acq.	11,230.37	4,305.12
Railroad Ranch Unit			6,148.06	1979 DE Harriman Acq.		
Sheridan Ranch Unit			776.29	1993 DE IFPL Acq.		
Harriman East						

0 0.75 1.5 3 Miles

1:100,000

Web Templates – new way to share information

- Only 1 mxd file is required, not 45 different mxds
- Information from mxd file is posted to ArcGIS Server
- Server information is then used to create an online map with ArcGIS Online
- The online map is used to build the Web Application

Web Application tips

- Make a simple map for your map information. Use only a few layers
- Basemap widget is very powerful. Allows visitors to select different basemaps
- Draw is another great tool. Lets visitors draw on the map
- Add Data is another widget that allows visitors to add additional information to web map.
- Print function is a great way to take a visitor custom map into the field.
- Here is the url - <http://arcg.is/2qAXUwT>