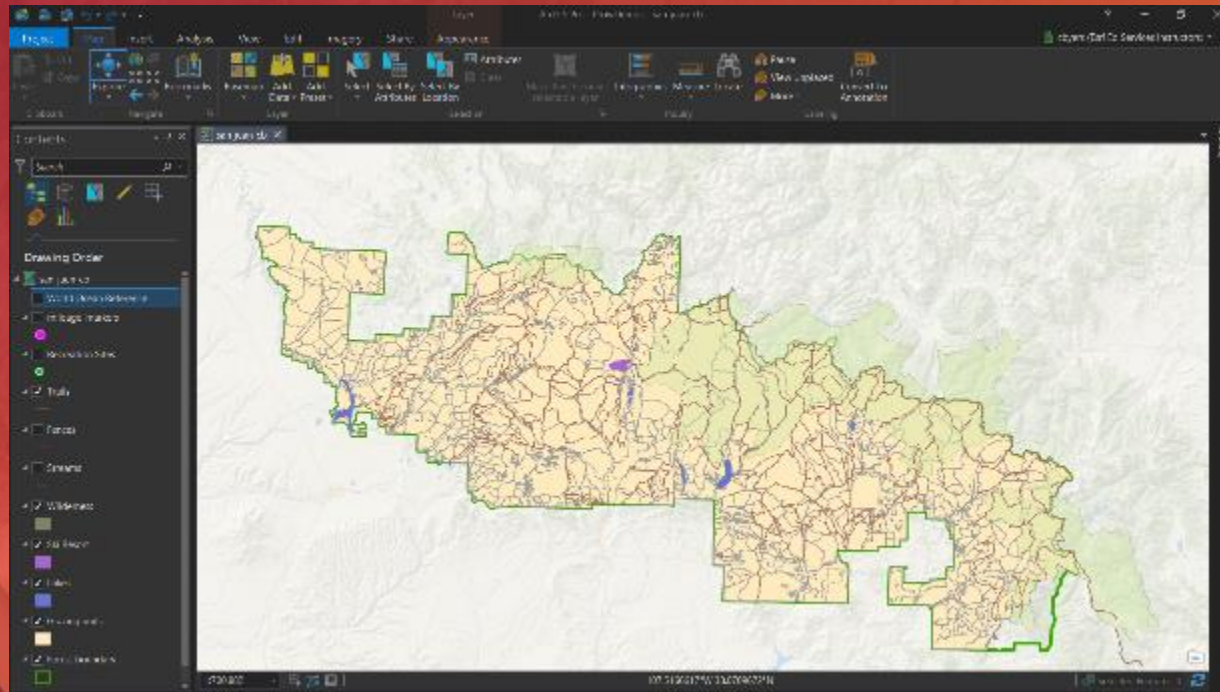


# ArcGIS Pro: Migrating from ArcMap

Carl Byers

J. D. Overton



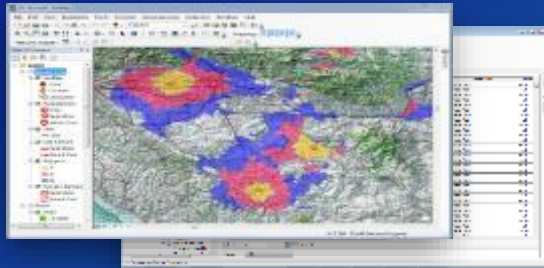
# ArcGIS Pro Overview



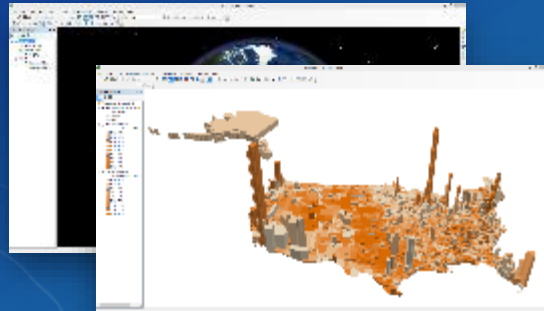


# Application Fusion

ArcMap / ArcCatalog



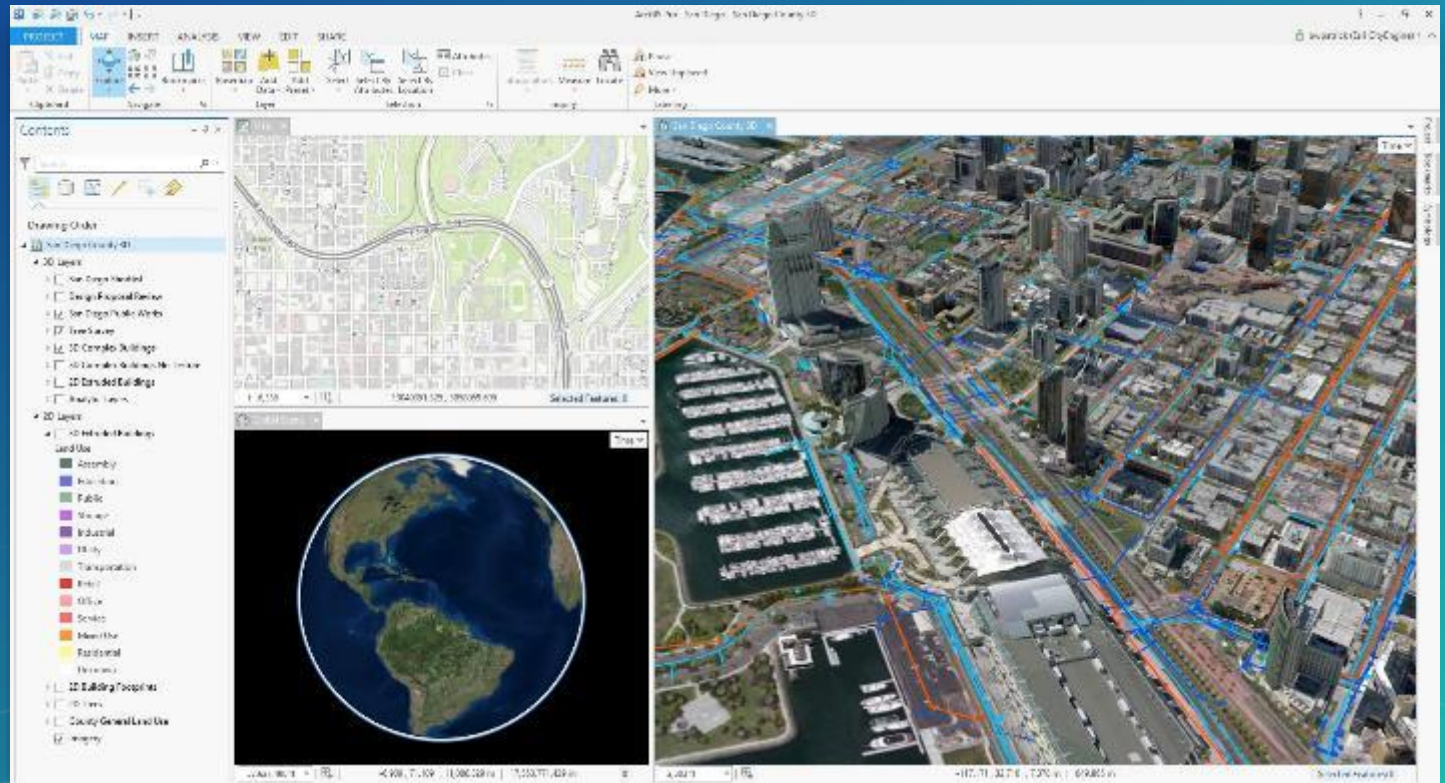
ArcGlobe / ArcScene



CityEngine



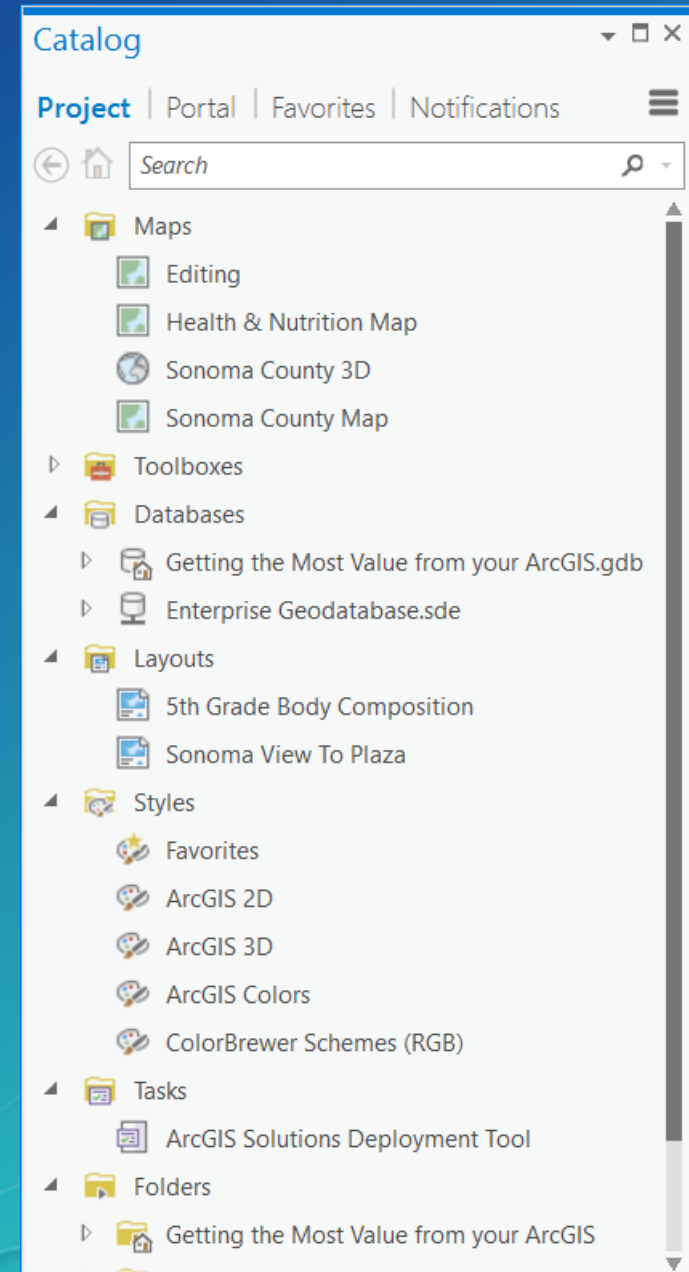
ArcGIS Pro



# Culture shift

- Desktop client for platform
- Nomenclature
- ArcCatalog?
- Project-centric
- Project breadth

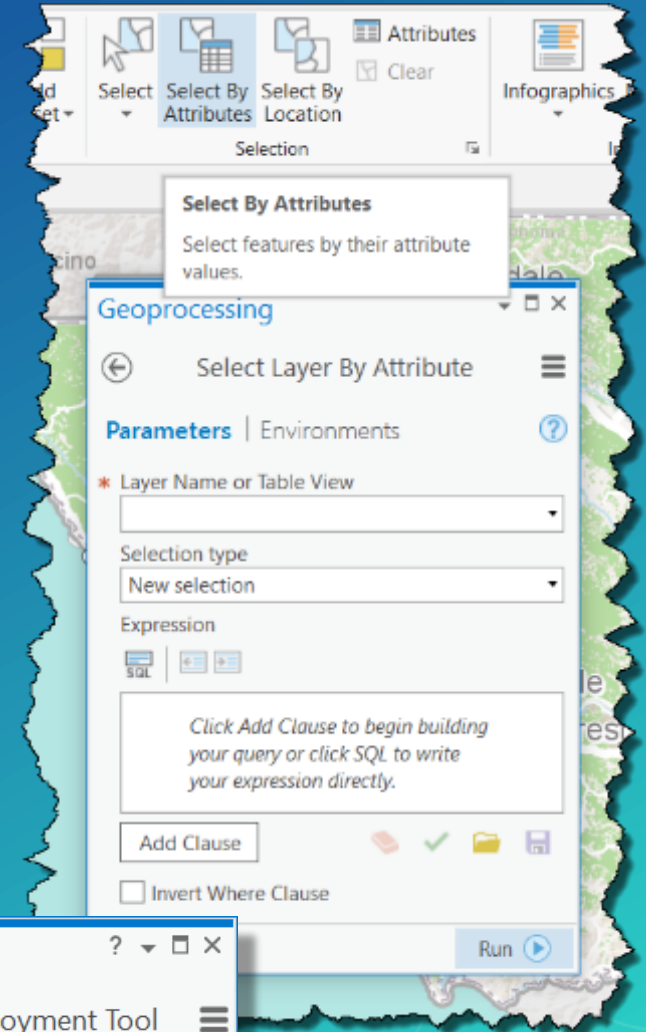
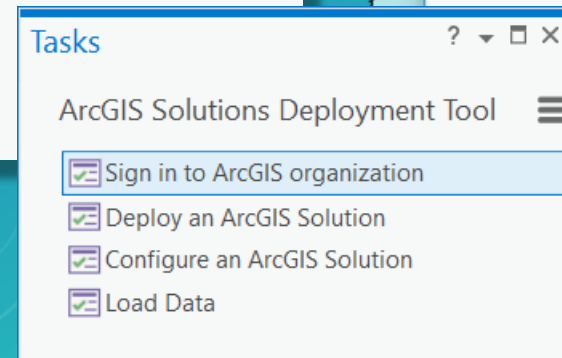
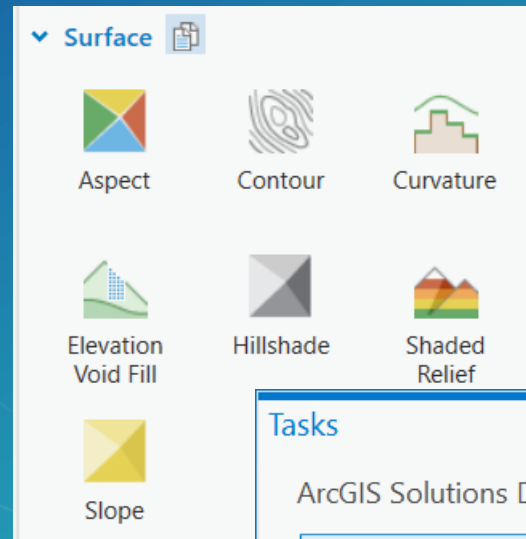
The times they are a changing



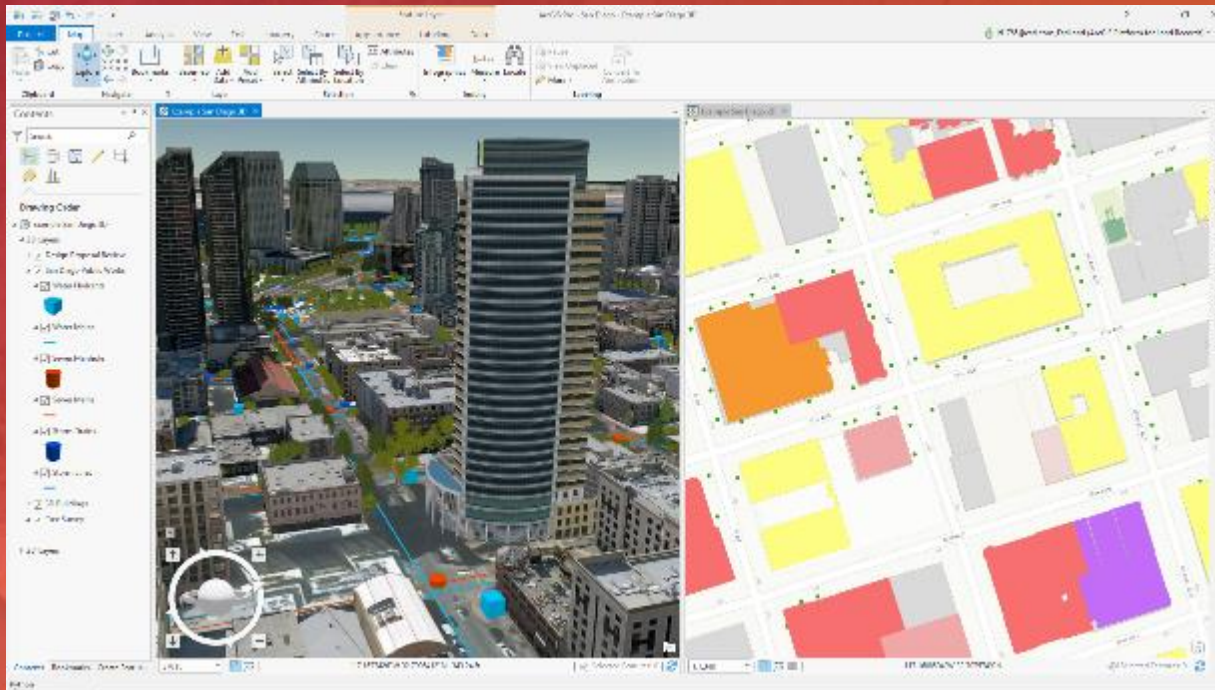
# Technology themes

Look for these ....

- More utilization of geoprocessing tools
- Vector tiles
- Raster functions
- Tasks
- 3D on demand
- Oh, and web maps too





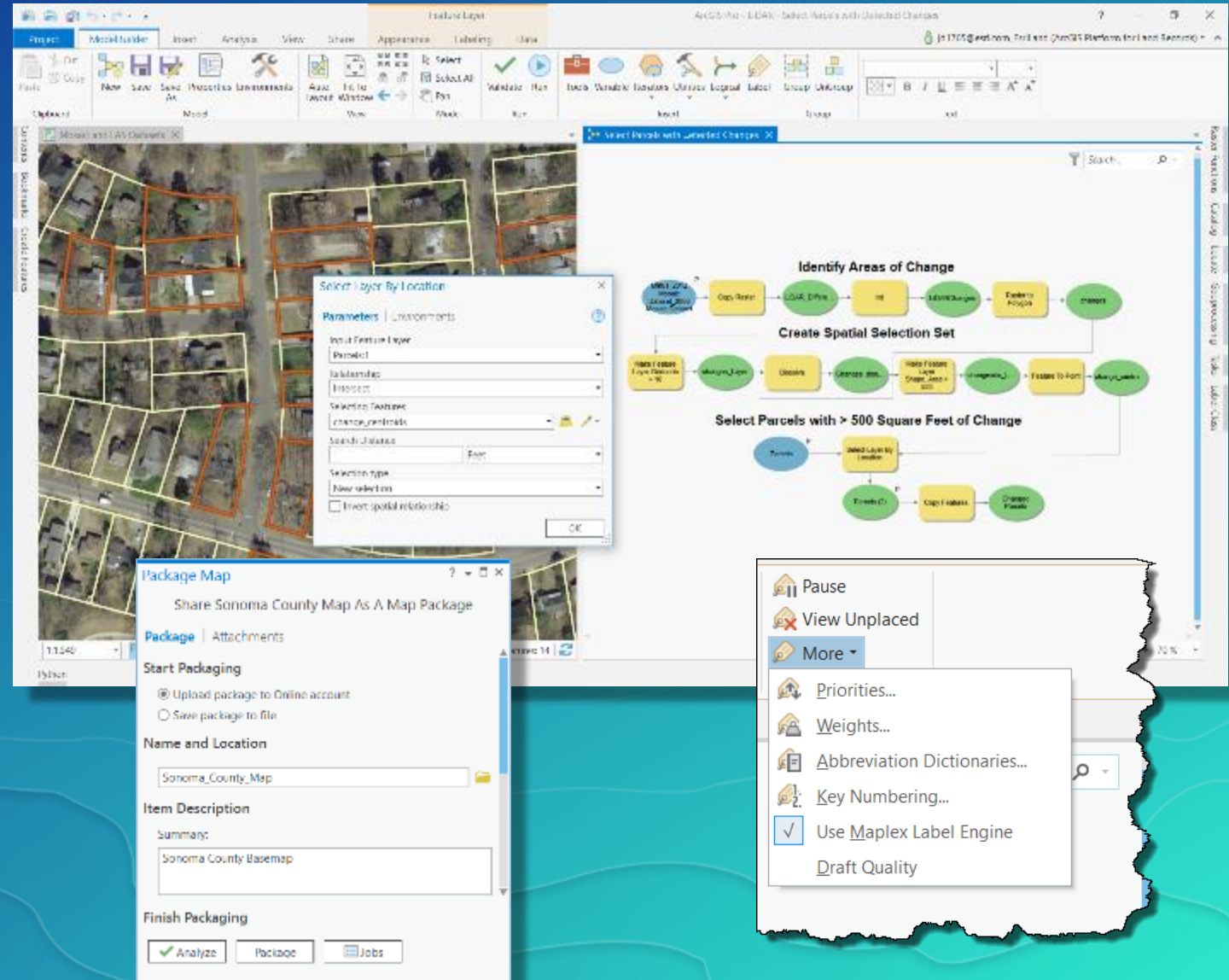


# Technology Themes

# Mostly the same

- Analysis
- ModelBuilder
- Packages
- Labeling
- Layouts

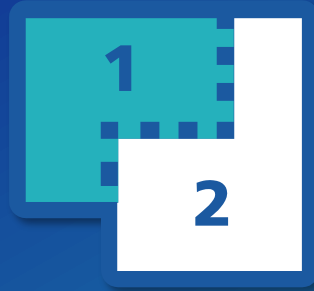
But the interface has changed



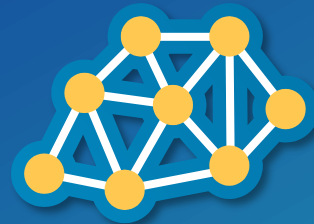


# Missing in action and on the radar

Parcel fabric



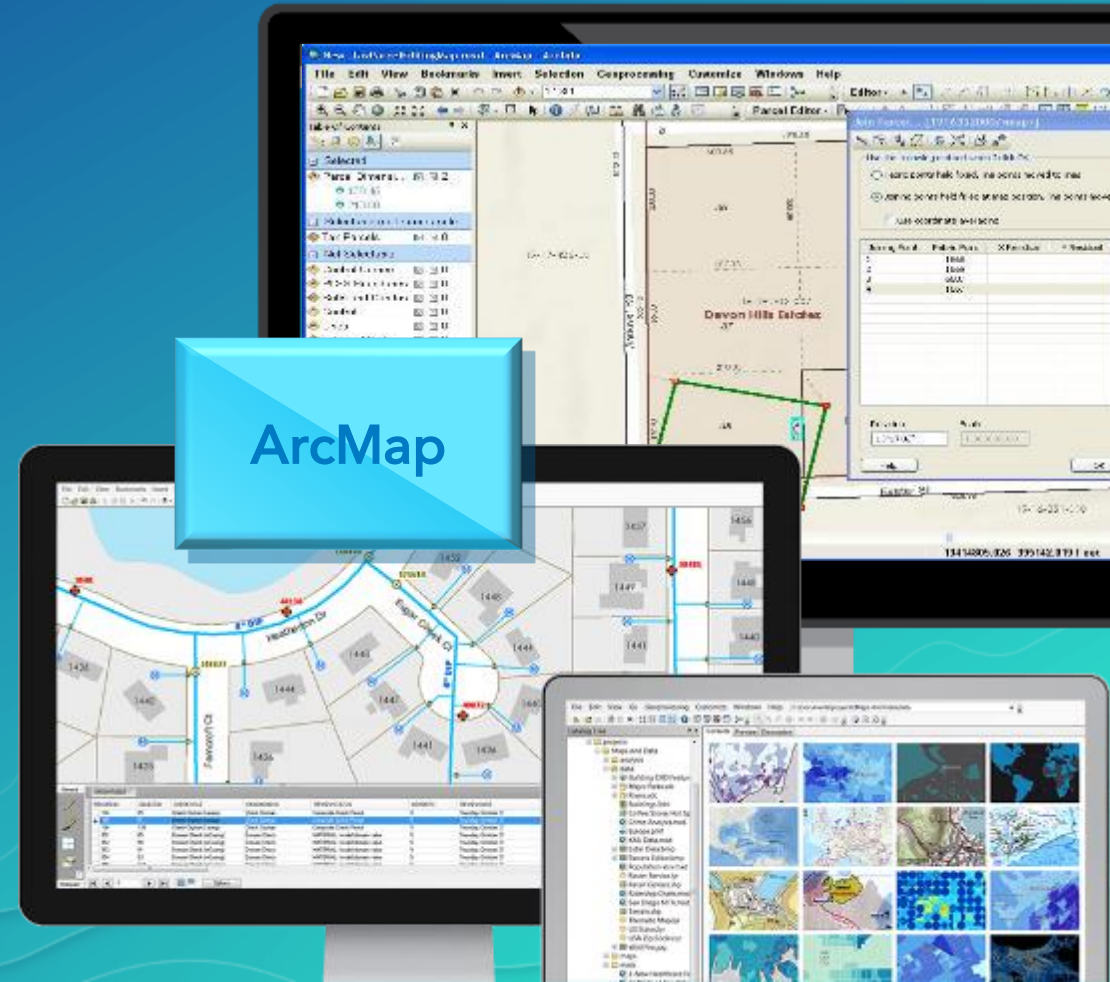
Geometric networks  
Utility networks in beta



Reports  
Dynamic Tables



Selection Layers





# Authentication

- Named user in organizational account\*
- Named user in Portal
- Single use
- LM concurrent use
- And licenses can be checked out

All options supported, planning required

**Settings**

☐ Authorize ArcGIS Pro to work offline ⓘ

**Licensing Portal**  
🔑 <https://www.arcgis.com/>

**Workstation Alias** ⓘ  
📁 J.D.'s Laptop

[Configure your licensing options](#)

**Licensing**

**Configure Authorization**  
Select your authorization type from the drop-down list below:

**License Type** Named User License ▼ [Learn More](#)

**Configure you**

☐ Single Use License

☒ Named User License

☐ Concurrent Use License

Please configure your licensing portal and sign in to ArcGIS Online or Portal for ArcGIS with an account licensed to use Pro.

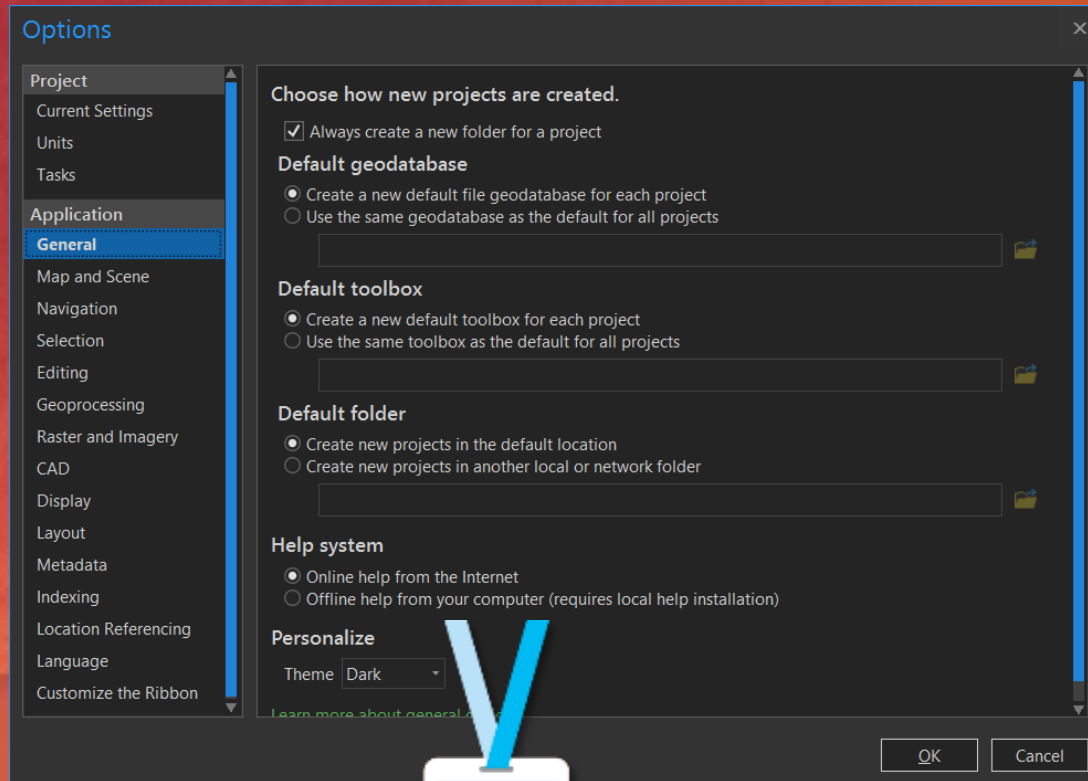
**ArcGIS Online**  
☒ Authorize ArcGIS Pro with a valid ArcGIS Online account  
URL

**Portal for ArcGIS**  
☐ Authorize ArcGIS Pro using Portal for ArcGIS  
URL   
Example: <https://webadaptorhost.domain.com/webadaptorname>



<https://www.arcgis.com/>

Available : Signed in as jd1765@esri.com\_EsriLand



# Procedures: Backstage Pass



ACCESS ● ● ● ○ ○  
SECURITIES ● ● ○ ○ ○  
CAPABILITIES ● ● ● ○ ○



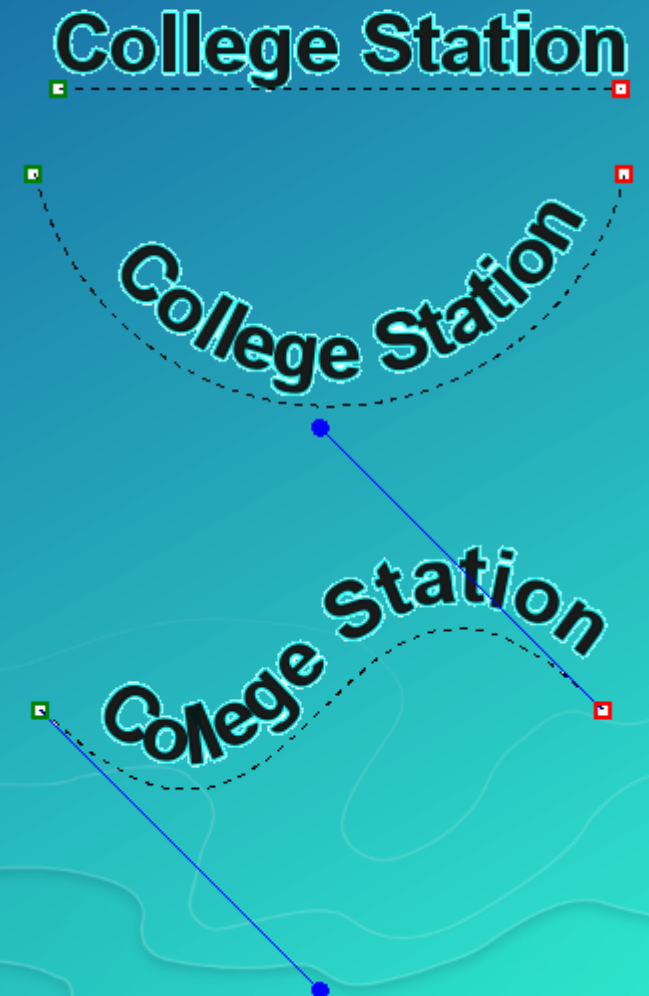
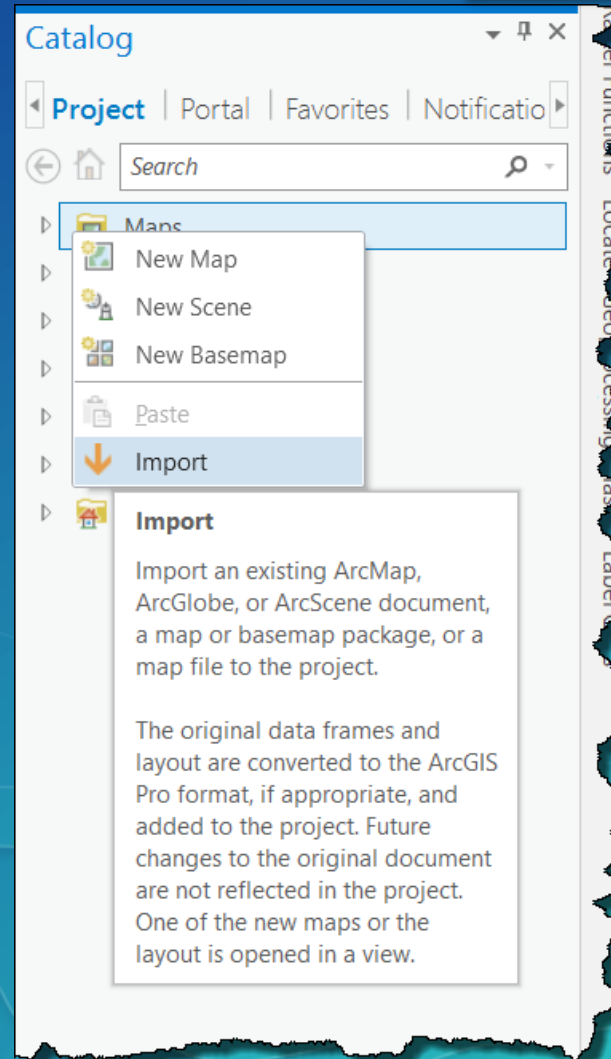
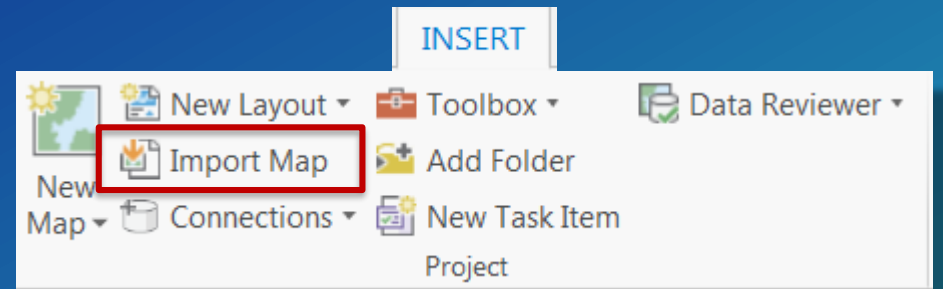


# Procedures: Import from ArcMap

# One-way streets

- Import MXD
- Editing annotation

Applies to packages as well





# Best practices

- Physical GPU
- Work with customer care for entitlements
- Plan how projects fit
- Project package to back up
- More screen real estate



## Customer Care

888-377-4575

(5:00 a.m. – 5:00 p.m. PT Monday – Friday)

### Customer Service

My Esri: Orders, Software Downloads, Account, and License Management

Email Customer Service

### Technical Support

Submit a Case Request

Knowledge Base, Downloads, and Product Support



questions?  
& answers







esri

THE  
SCIENCE  
OF  
WHERE