

UC



ArcGIS Pipeline Referencing: What's New at 10.5.1/2.0

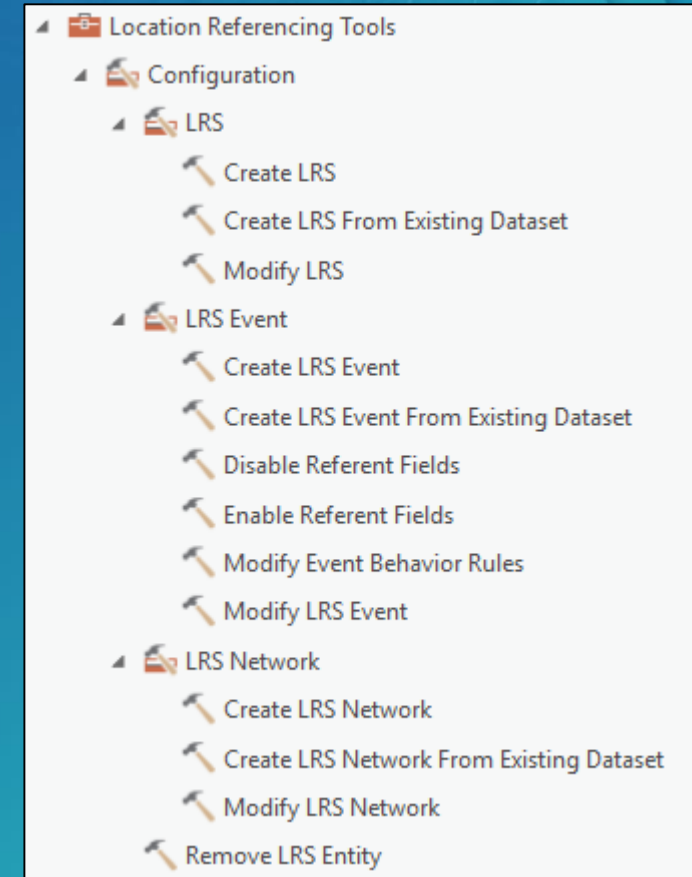
Nathan Easley

What's New in ArcGIS Pro



What's New in ArcGIS Pro

- Configuration toolset in Location Referencing toolbox
 - Create LRS
 - with or without information model created in advance
 - Create LRS Network
 - with or without feature class modeled in advance
 - Create LRS Event
 - with or without feature class modeled in advance
 - Modify LRS, Network, and Events
 - Modify Event behaviors and referent fields
 - Remove LRS entities



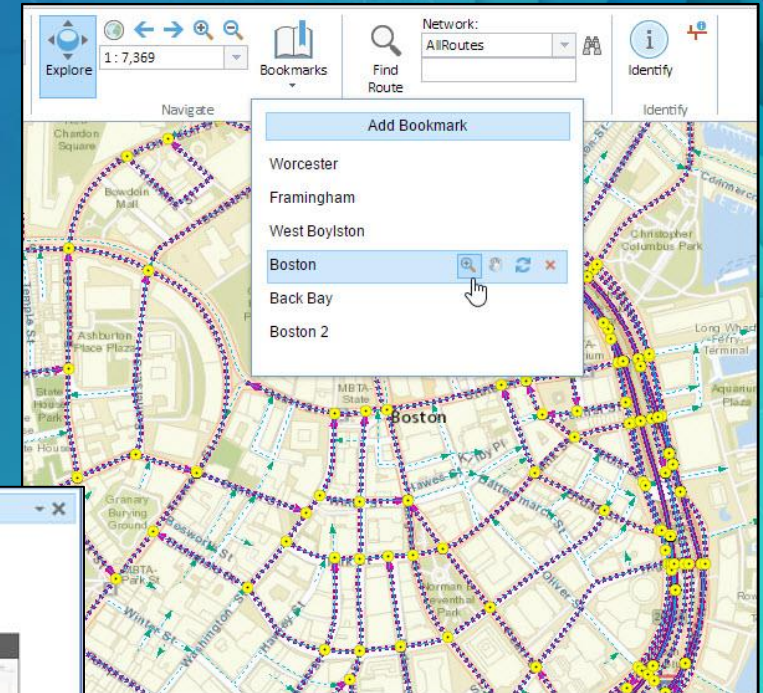
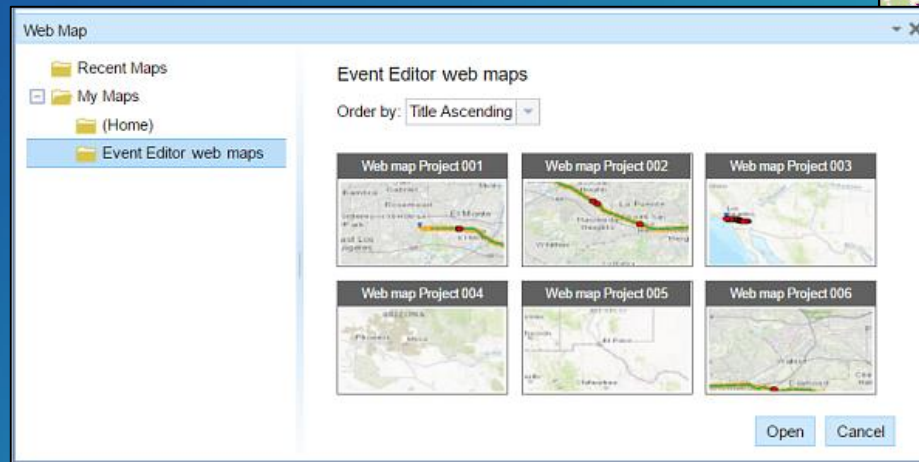
What's New in Enterprise



What's New in Enterprise

Event Editor

- Identify and view related records
- Subtype support
- Save and load web maps to Portal
- Bookmark support



What's coming in 10.6/2.1



What's coming in 10.6/2.1

Pro

- REST based network editing to integrate with the Utility Network
- Load Routes geoprocessing tool
- Hierarchy view of LRS, Networks, and Events

Enterprise (Event Editor)

- Relationship class creation/editing
- Change symbology
- Change layer order in table of contents
- Dock widgets across two monitors



esri

THE
SCIENCE
OF
WHERE

Please Take Our Survey on the Esri Events App!

Download the Esri Events app and find your event



Select the session you attended



Scroll down to find the survey



Complete Answers and Select "Submit"

