



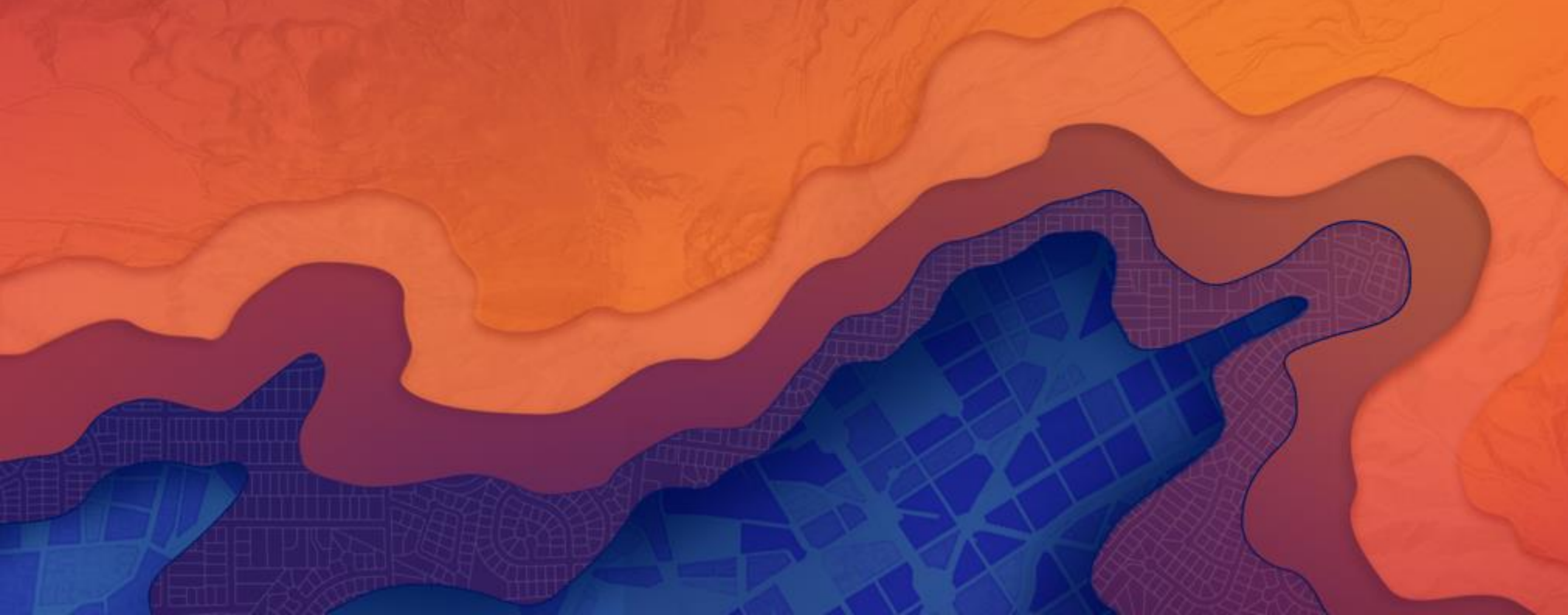
Engaging Your Community with Open Data and ArcGIS Hub

Courtney Claessens and Graham Hudgins

Washington, DC R&D Center

Community Engagement

Our definition



Two-way community engagement

Two-way conversations and information exchanges

Asking two questions:

1. What do citizens want from their government?
2. How can the government better assist their citizens?





Citizen Role



Government Role



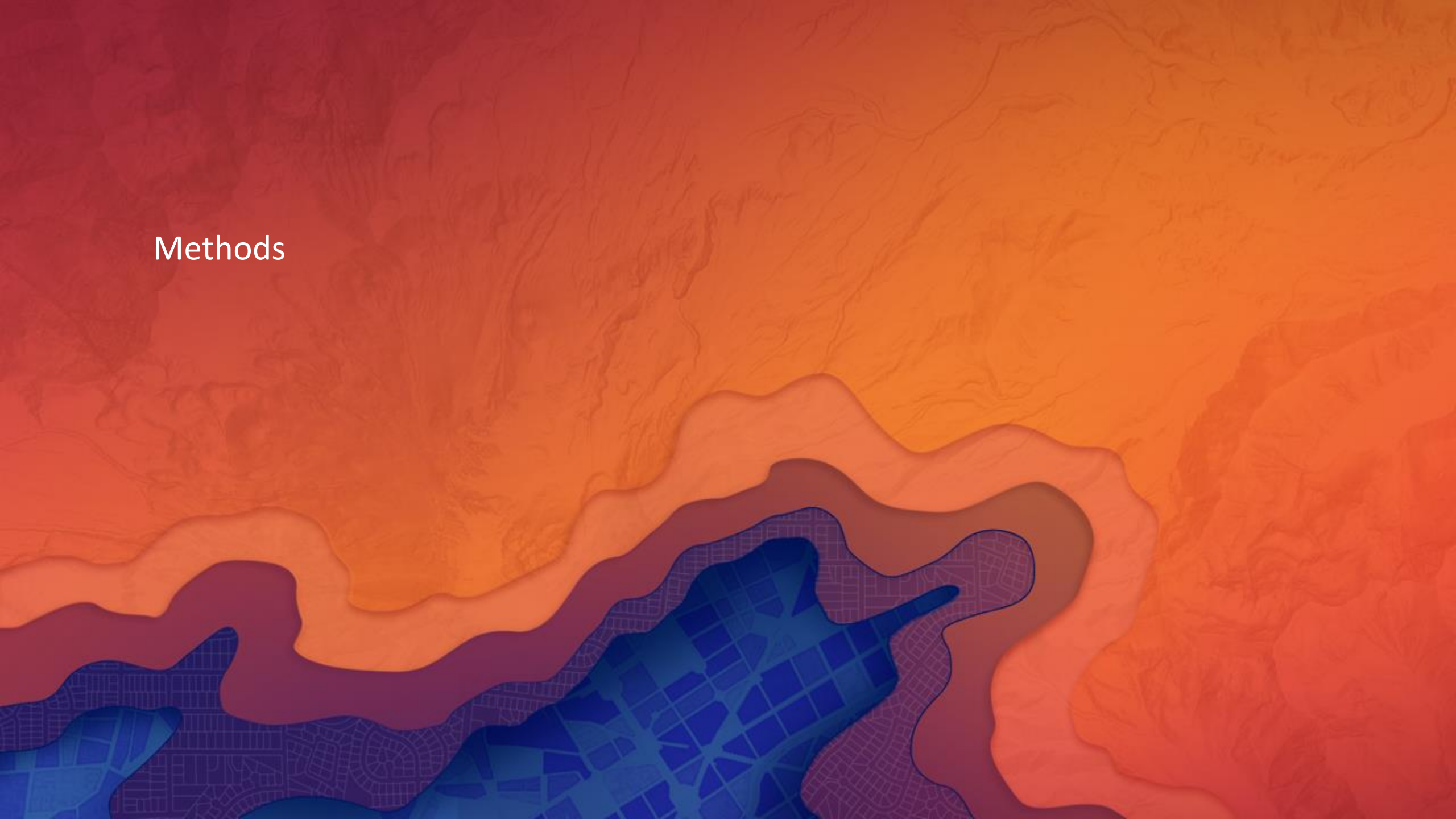





Roles

 Citizen Role	Government Role 
Local knowledge	The data!
Vast resources	Tools
New insights	Support
Enthusiasm	Opportunity

Methods





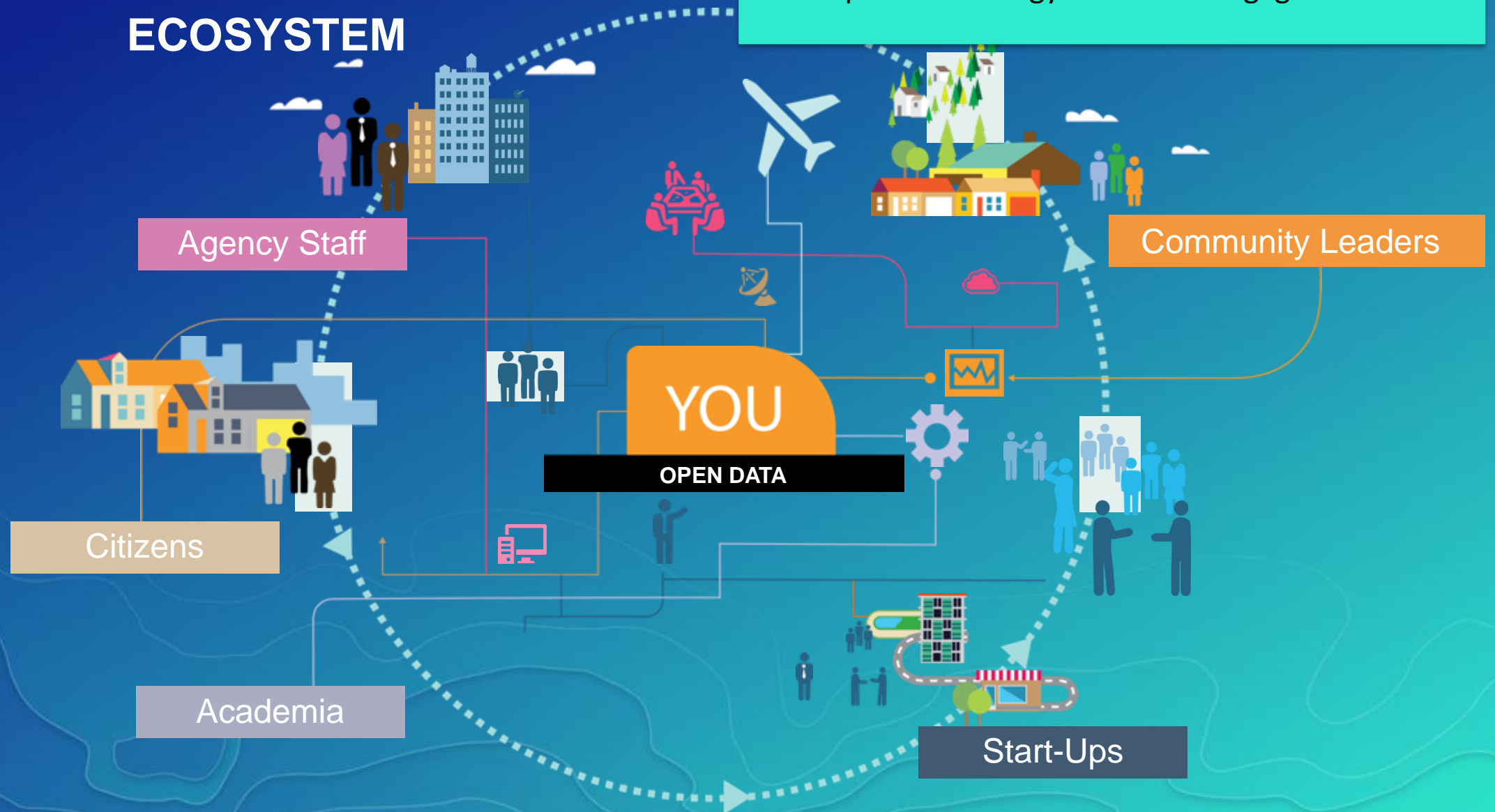
How do we position ourselves and allocate our resources to best encourage this two-way community engagement?

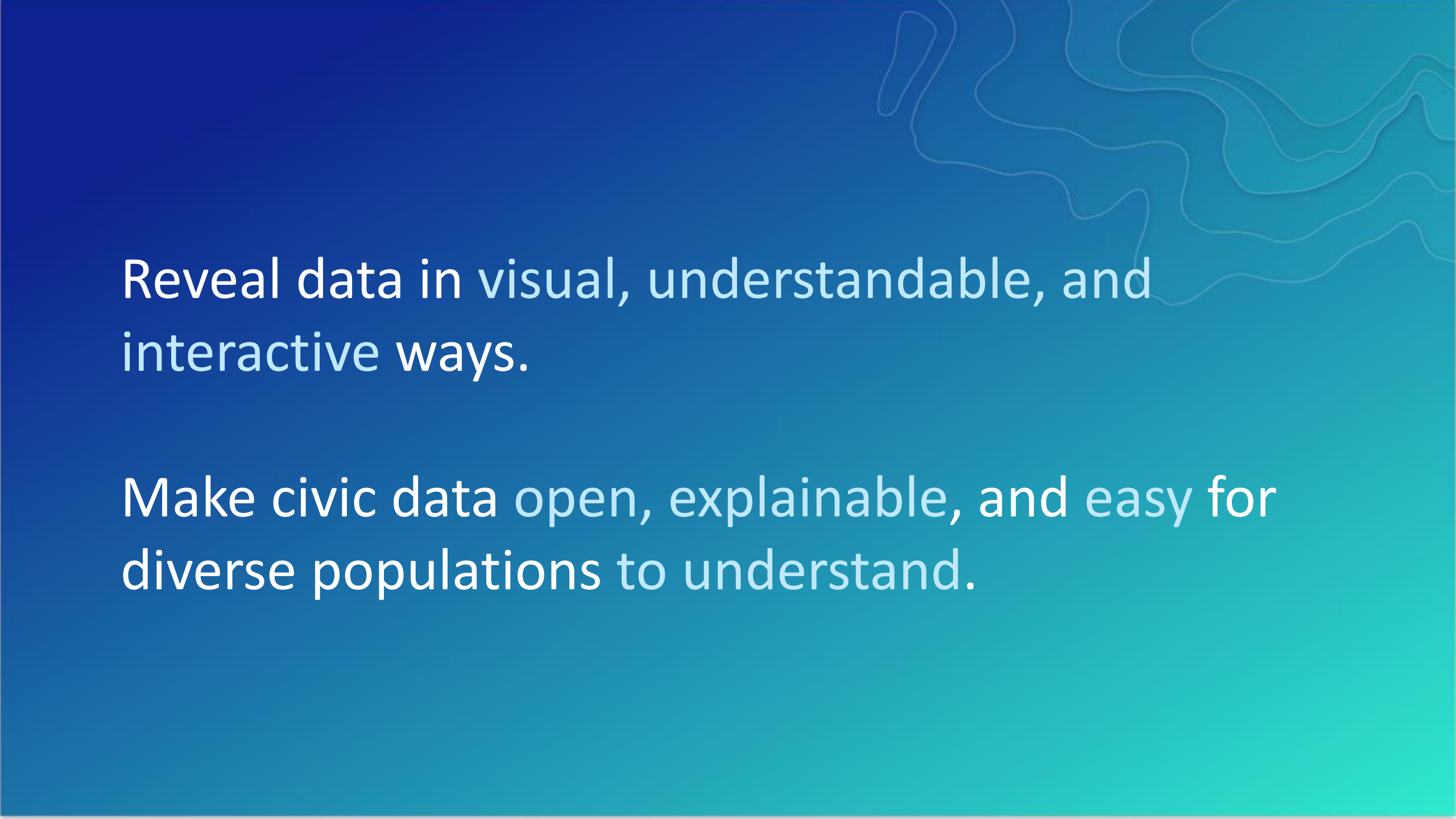
Open Data

An INNOVATION

ECOSYSTEM

Open data is a very good
passive strategy for citizen engagement





Reveal data in visual, understandable, and interactive ways.

Make civic data open, explainable, and easy for diverse populations to understand.

More than just data altogether

Consider the questions...

- What stories do the data tell?
- How can we generate insights?
- How is the data being used?
- What questions can we answer more simply?

Consider the solutions...

- **Story Maps**
- **Operations dashboards**
- **Locator applications**
- **Pages**

Turning data into information

A Platform for a

future**ready**

BRAMPTON

The Brampton GeoHub is a platform that features initiative driven tools that help grow transparency and foster innovation everywhere. Combine datasets and perform analysis through the use of maps and charts, or simply download the data to tell your own story.

Browse the data by **Category**, or **explore the entire collection** of datasets. This is Open Data *with a purpose.*



APPS

Purposeful web apps built with Open Data to answer questions and solve problems.



MAPS

Browse Brampton's gallery of cartographic products that are built with open data.



STORIES

A platform to share stories with residents relating to the City's current initiatives.



DATA

Analyze it. Visualize it. Download it. This is Open Data with a purpose.

Johns Creek DataHub

Open Data, Dashboards, and Mapping Apps

The "DataHub" is the City of Johns Creek's central location for open data, dashboards, and interactive mapping applications.

Through this Hub, you can visualize city data in maps, charts, and dashboards. Developers can even tie their own data services and applications into City data.

Visualize Data in Dashboards

Dashboards provide an interactive way of visualizing information in the Johns Creek DataHub.



Most Common Data

Explore the most commonly-accessed data in the DataHub



CreekView

Interact with property information through a map



Business Locations

Find businesses and associated information



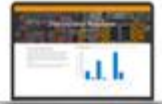
Building

Browse building permits and construction projects



Code Compliance

View code compliance cases



Fire

Navigate fire and medical calls from the JC Fire Department



Police

View incident information from the JC Police Department



Public Works

Dig into public works projects and tasks

[Explore More City Maps & Apps](#)

Introduce your developer resources and APIs

Using Open Data DC APIs

Welcome, Application Developers! We are very happy that you're considering building with Open Data DC. Our goal is for this site to be your platform for developing apps around DC's freely available, machine readable data.

Let's get Started

How much of an introduction do you need? DC gov uses APIs as a means to serve data to its developer community.

[What is an API?](#)

[More about Open Data](#)

Or follow the quick start guide below...



Image of the search box

Find the Data

Think of a keyword and enter it in the search box. Suggested keyword searches will appear as you begin typing. DC tags its layers with words we think will match your expected results.

[Back to Open Data DC](#)

Explore the Data Layers

Each data layer in the catalog comes with a brief description that helps give context. You will also see a publication date and boxes identifying attribute fields within the data. The Data tab at the top will show a preview of the table.

Let's take a look at Swimming Pools as an example,

[Swimming Pool Attributes](#)

OBJECTID	GIS_ID	FEATURECODE	DESCRIPTION	CAPTUREYEAR
1		SWIMMING POOL	Swimming Pool	4/24/2015

Provide starter materials

opendatadc-starterkit

This repo is a collection of samples designed to demonstrate how developers can use the json-based APIs found at [Open Data DC](#) to build data-centric applications. It is managed by DC Government staff members of Chief Data Officer's team.

[Explore Live Demos](#)

About the Samples

The samples...

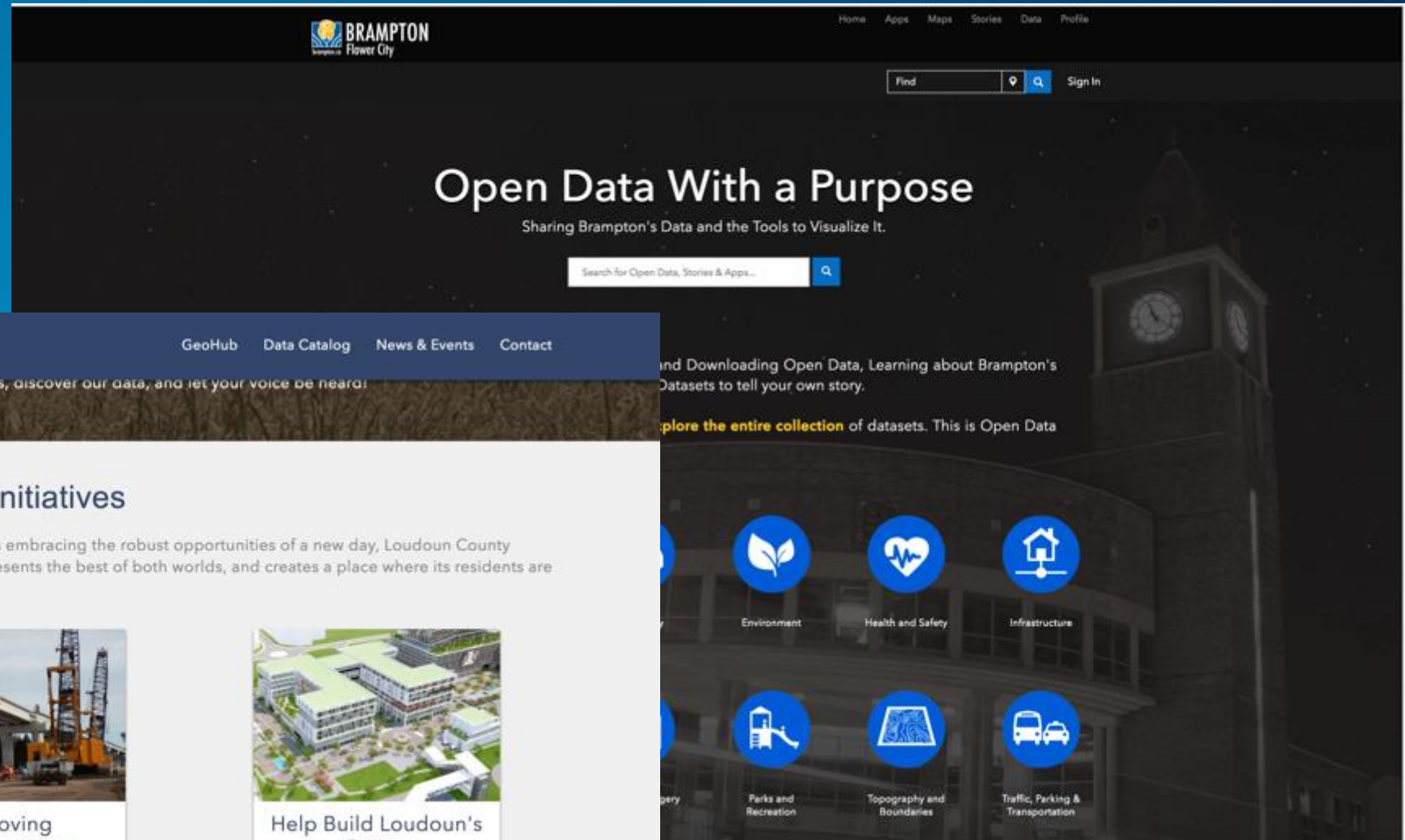
- require only basic web development skills.
- are easily hacked by simply changing data sources, titles, and making other minor configuration changes.
- have an understated but pleasing look-and-feel.
- show how you can consume data on [Open Data DC](#) in lots of clients: esri, D3, mapbox, leaflet, google maps

Table of Contents

Number	Name	Description	Technologies
1	dcopendata_atmlocations_arcgis	Simple clustering using ArcGIS JS API	Dojo , ArcGIS JS API
2	dcopendata_bikeshare_mapbox	Uses pin to location and simple buffer to reveal points in range, includes search by location, 'my location', and drag and drop/click anywhere responses	Mapbox GL JS , jQuery
3	dcopendata_buildingpermits_mapbox	Simple clustering example with slider to display monthly datasets using Mapbox	Mapbox GL JS , jQuery , D3
4	dcopendata_crime_collapsibletree_mapbox	Displays crime data using dendrogram using mapbox	Mapbox GL JS , D3 , jQuery
5	dcopendata_crime_treemap_d3	Displays crime data as a treemap using d3	D3 , jQuery

How do you also achieve an **active strategy** of community engagement?

Transform your open data into micro sites towards policy initiatives that are engaging to your community





Your community is an incredible data source.

Help us learn more about Greenways

The Capital Area Greenway System is a network of public open spaces and recreational trails which provides for activities such as walking, jogging, hiking, bird watching, nature study, fishing, picnicking and outdoor fun. The trails connect many of Raleigh's parks and in many cases provide a complement to the recreational activities at the parks. Many of the city's major ecological features can be experienced in their natural state along the Greenway. A major goal of the Greenway Program is to establish a completed network of interconnected trails throughout the city.

Share your voice

We want to hear from you. Fill out the survey to share your feedback on our greenways. Your input is immediately available on the map above and will be used by our teams to improve your city.

Join our Events

Subscribe to our Greenways initiative to participate in events, contribute analysis and build new apps to help citizens and the city.

[Sign up & Participate](#)

Raleigh Greenways

null

How do you travel greenways? *

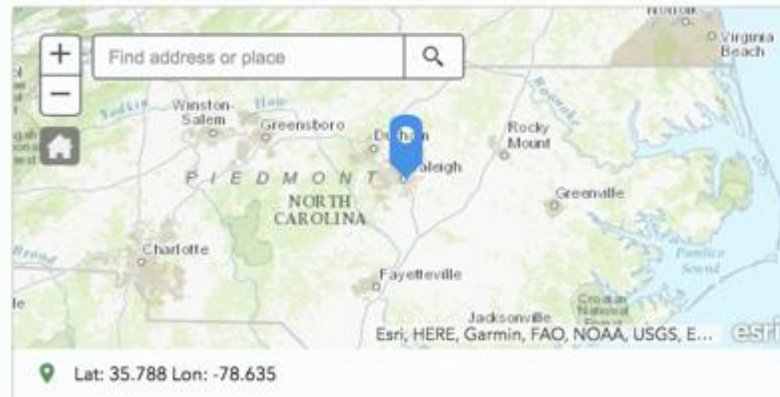
- ☐ Walking
- ☐ Cycling
- ☐ Horseback
- ☐ Other

Do you want to be contacted with more questions?

Share an image of your favorite Greenway

[Click here to upload file. \(<10MB, support: jpg,jpeg,png,gif\)](#)

Which Greenway to you enjoy? *



Two types of survey

- Collect **data**

Enable your community to help fill in missing data about your area

- Collect **opinions**

Leverage your community to prioritize action and share plan options

Tap into your schools for project based work

- Getting government data directly into the hands of citizens
- ConnectED
- Pushing into commercial apps



Hold events to discuss those initiatives and gather interested community members

- Creating physical spaces where people can:
 - Discuss concerns
 - Discover solutions



Create a social presence

- A social media page for open data (passive engagement) to connect resources and provide a feedback channel
- A social media page for each initiative



ArcGIS Hub: Community

Esri is working to make it easier to manage active and passive community engagement

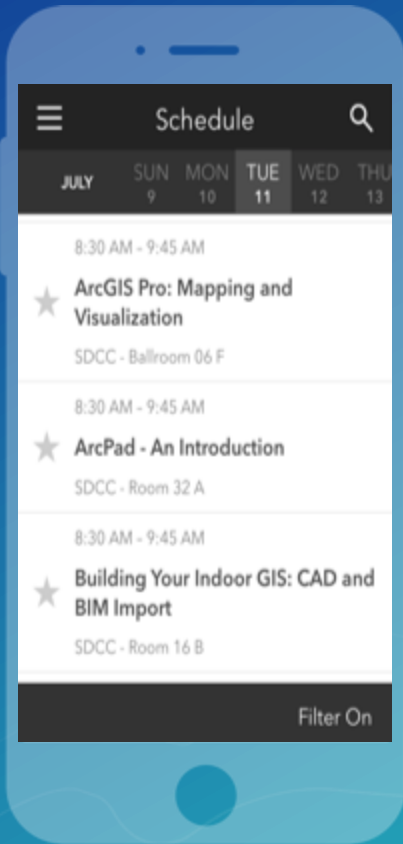
- Manage community outreach and engagement
- Named ArcGIS users for community participants
- Digital public spaces for two-way collaboration

Please Take Our Survey on the **Esri Events App**!

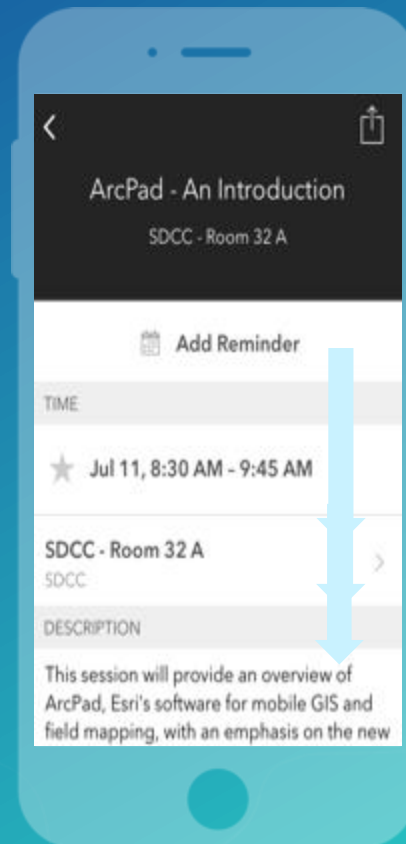
Download the Esri Events app and find your event



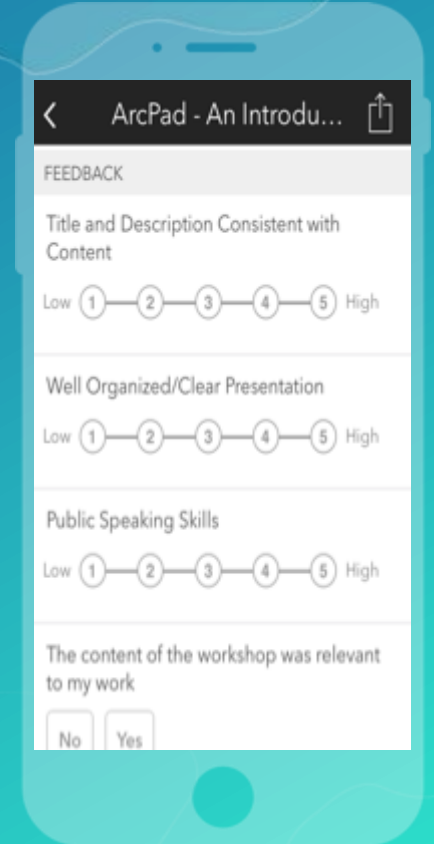
Select the session you attended



Scroll down to find the survey



Complete Answers and Select "Submit"





esri

THE
SCIENCE
OF
WHERE