



Presentation Skills Workshop

Rudy Prosser GISP CTT+
Instructor, Esri

Keera Morrish CTT+
Instructor, Esri



One Rule...

Never give a presentation
you wouldn't want to attend.

- *Nancy Duarte*

3D Visuals for Modeling
Spatial Analysis

Story

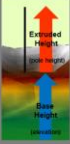
You

Presentation

Illustrations

Extruding Features

- ✓ Set as feature property
- ✓ Determined by geometry
 - Point → Line
 - Line → Plane
 - Polygon → Solid
- ✓ Allows different options
 - Add to base height
 - Stretch from base height



UC Demo
Publish a dynamic image service

Goal:
Publish a dynamic image service that can be used to create a map of the region of interest.

Settings:

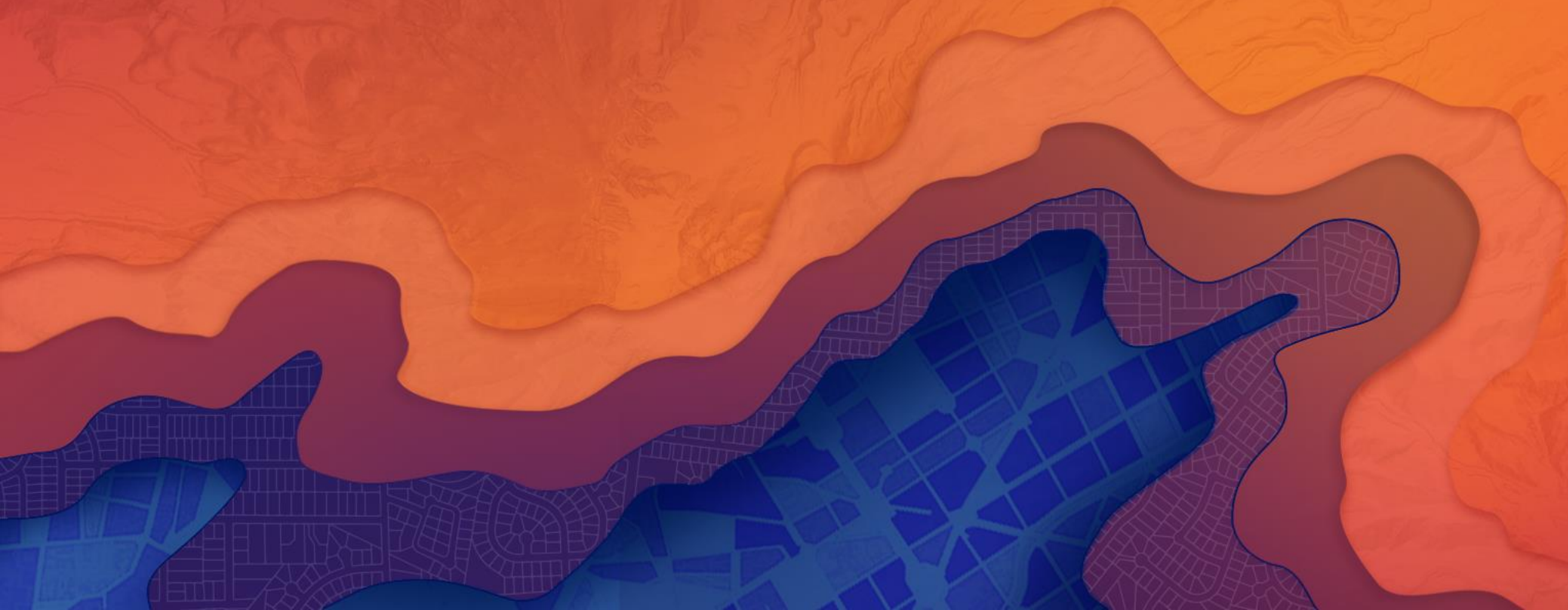
- 1. Set the output format.
- 2. Select the base map, base map style, and the base map image service.
- 3. Select the output format, output image, and output image service.
- 4. Select the output format, output image, and output image service.
- 5. Select the output format, output image, and output image service.



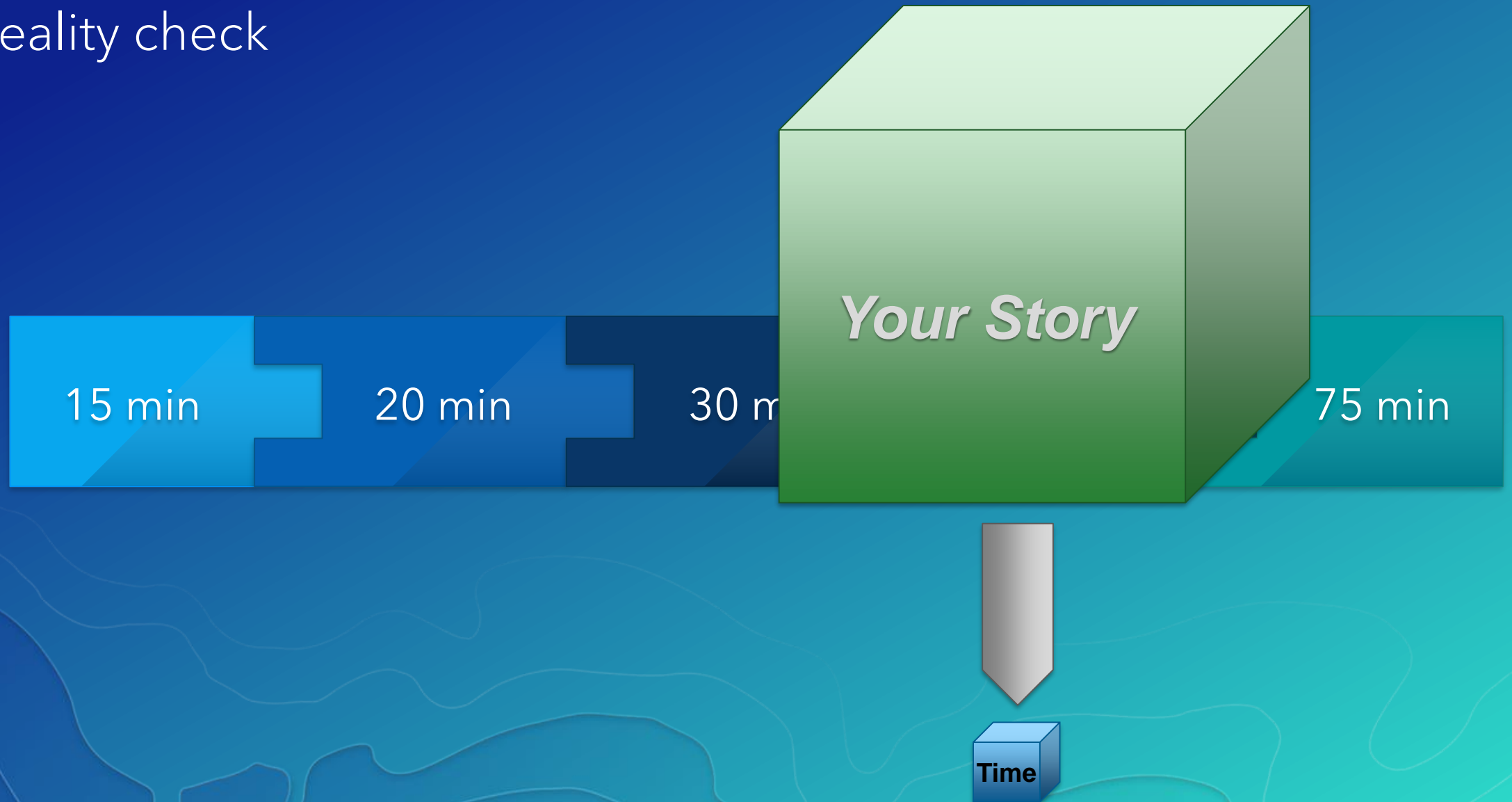
What we will cover

- Creating your story
- Effective illustrations
- Delivering your message

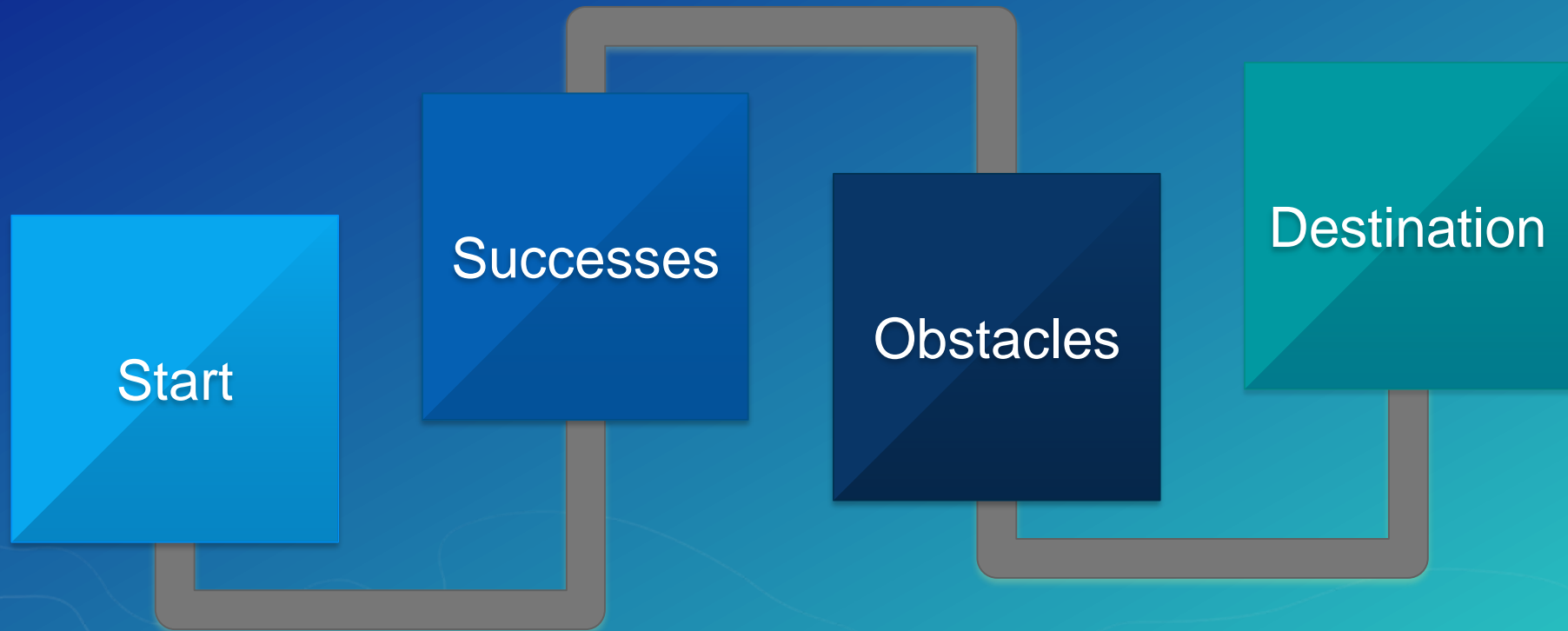
Creating your story



Reality check



What makes a good story?



What story do you want to tell?



Where to start?

Start with your abstract

Determine overall message

Prioritize

3D Visuals for Modeling Spatial Analysis

Track: Analysis, Geoprocessing and Visualization

Presenter(s): **Prof. E. McSquared PhD**

Using only 2D DEM data from an actual case study of the Mount St. Helens volcano, the presenter will demonstrate how to use ArcGIS Spatial and 3D Analyst tools to create a 2D polygon feature class representing the material displaced in the massive 1980 eruption. That data set will then be rendered using ArcScene to create an interactive 3D visualization.

3D Visuals for Modeling Spatial Analysis

Track: Analysis, Geoprocessing and Visualization

Presenter(s): **Prof. E. McSquared PhD**

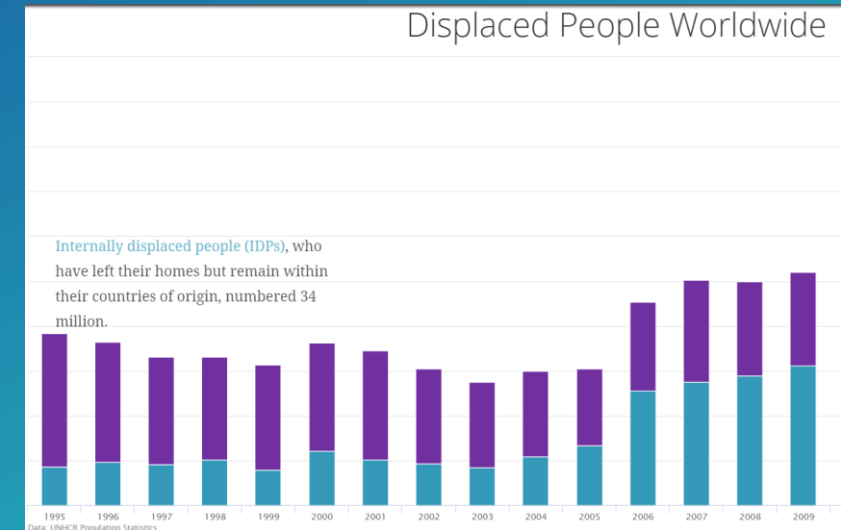
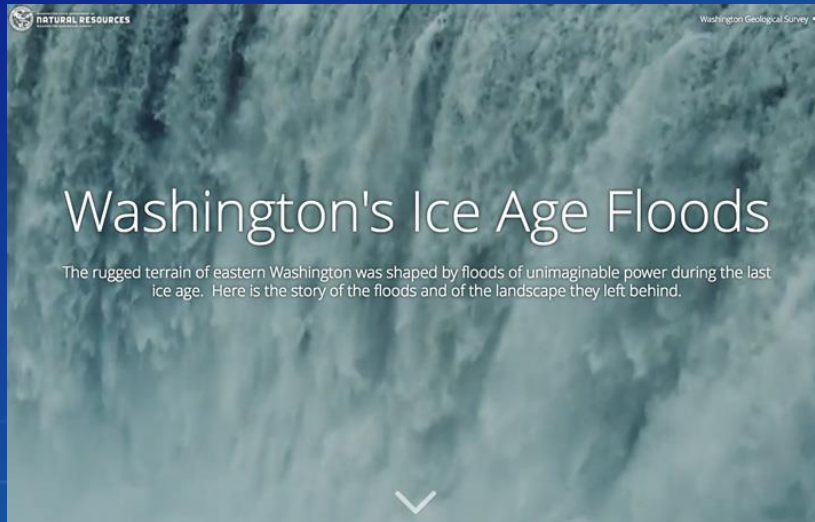
Using only 2D DEM data from an actual case study of the Mount St. Helens volcano, the presenter will demonstrate how to use ArcGIS Spatial and 3D Analyst tools to create a 2D polygon feature class representing the material displaced in the massive 1980 eruption. That data set will then be rendered using ArcScene to create an interactive 3D visualization.

A challenge...

- Introduce yourself to somebody new
- In 25 words... tell your story

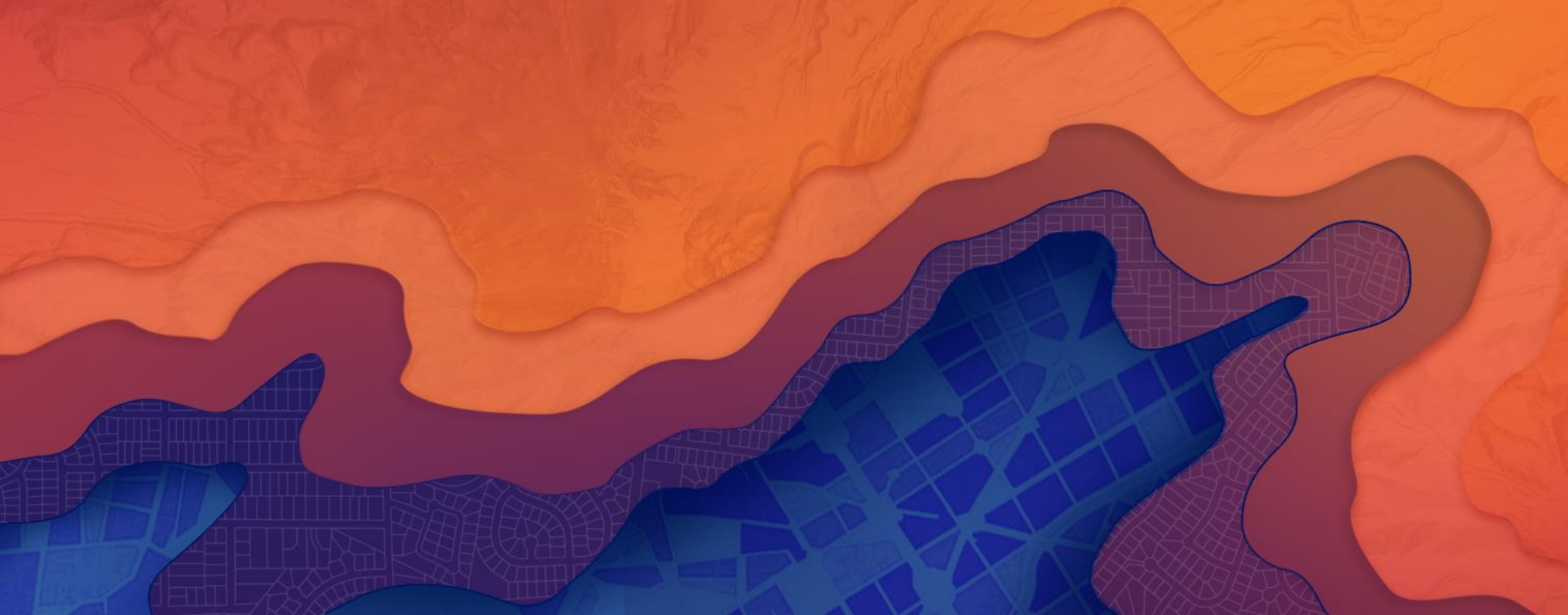


Determine how to present



Effective illustrations

SLIDES AND DEMOS



The first step is to admit you have a problem. The second is to acknowledge your slides have become unmanageable.

Nancy Duarte

The power of constraints

Nancy Duarte

Reduce

Reduce Record

Reduce Record Repeat

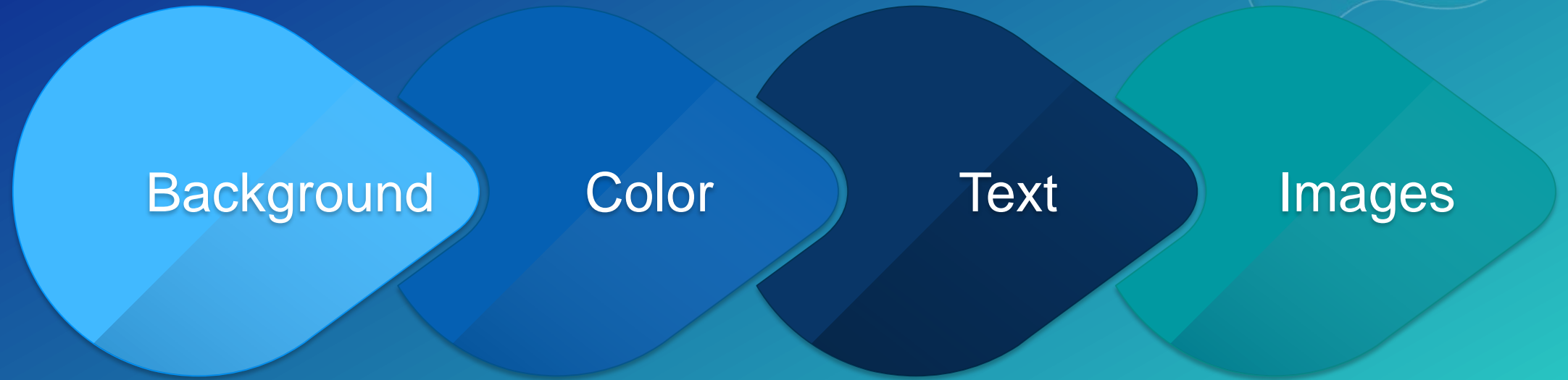
How many slides?

10/20/30

Sky's the limit!

Depends on the technology

Design your slides



Create your slides

Contrast

Flow

Hierarchy

Unity

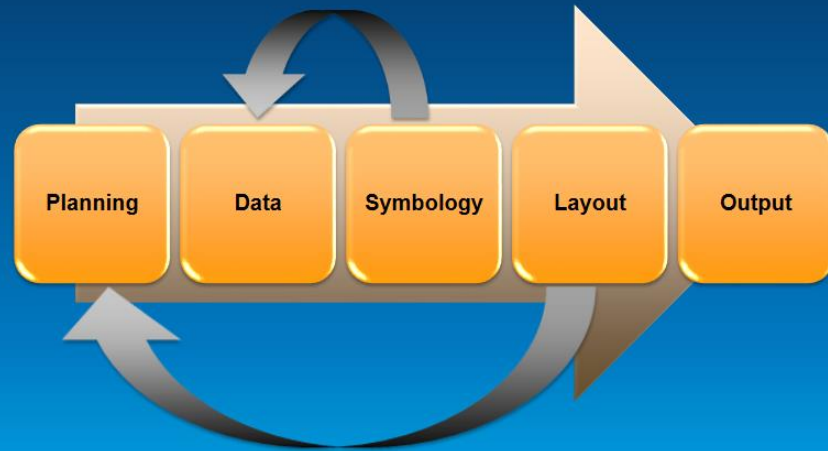
Proximity

Whitespace

Examples - Do

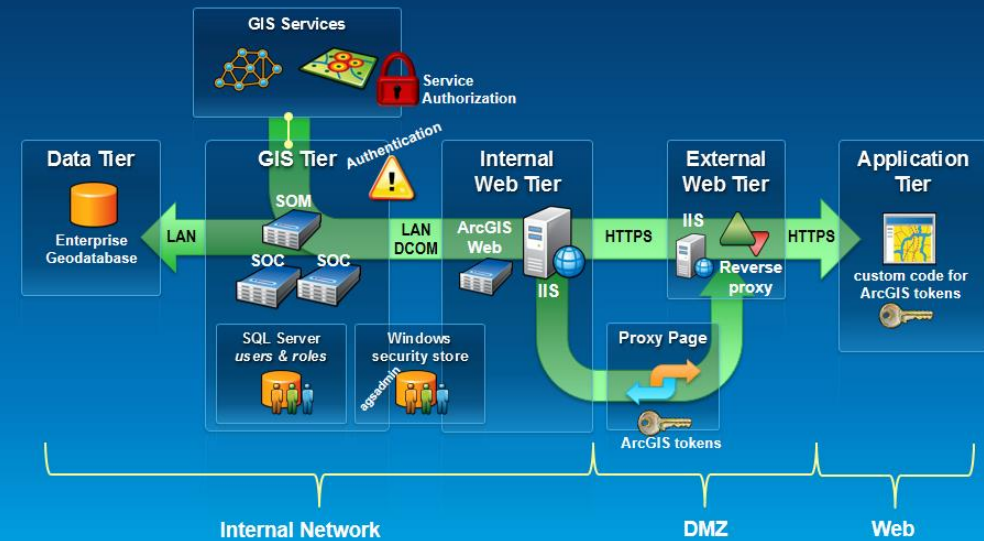
Creating maps

The cartographic workflow



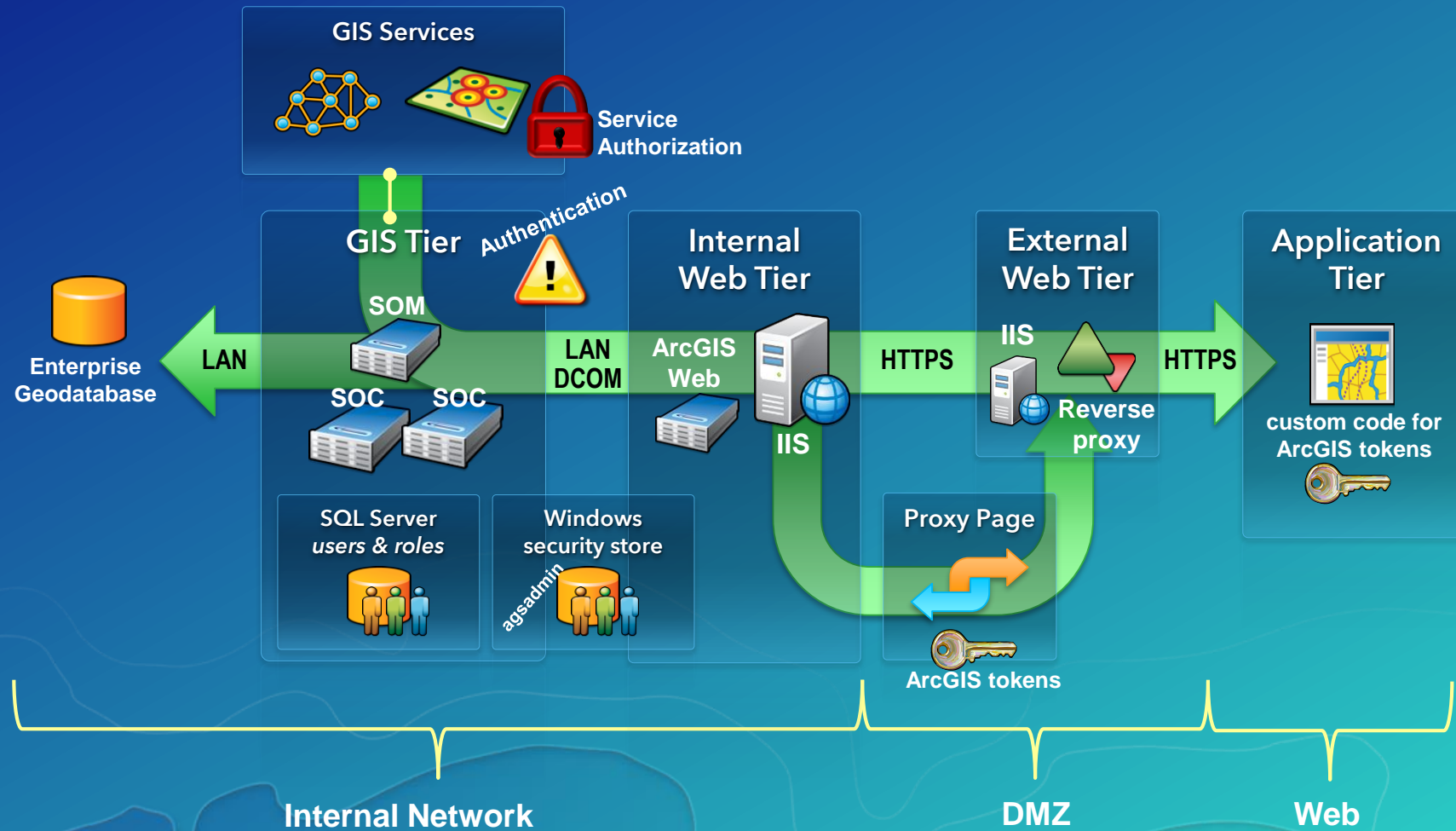
Esri UC2013 - Technical Workshop

Architecture at 10.0



Esri UC2013 - Technical Workshop

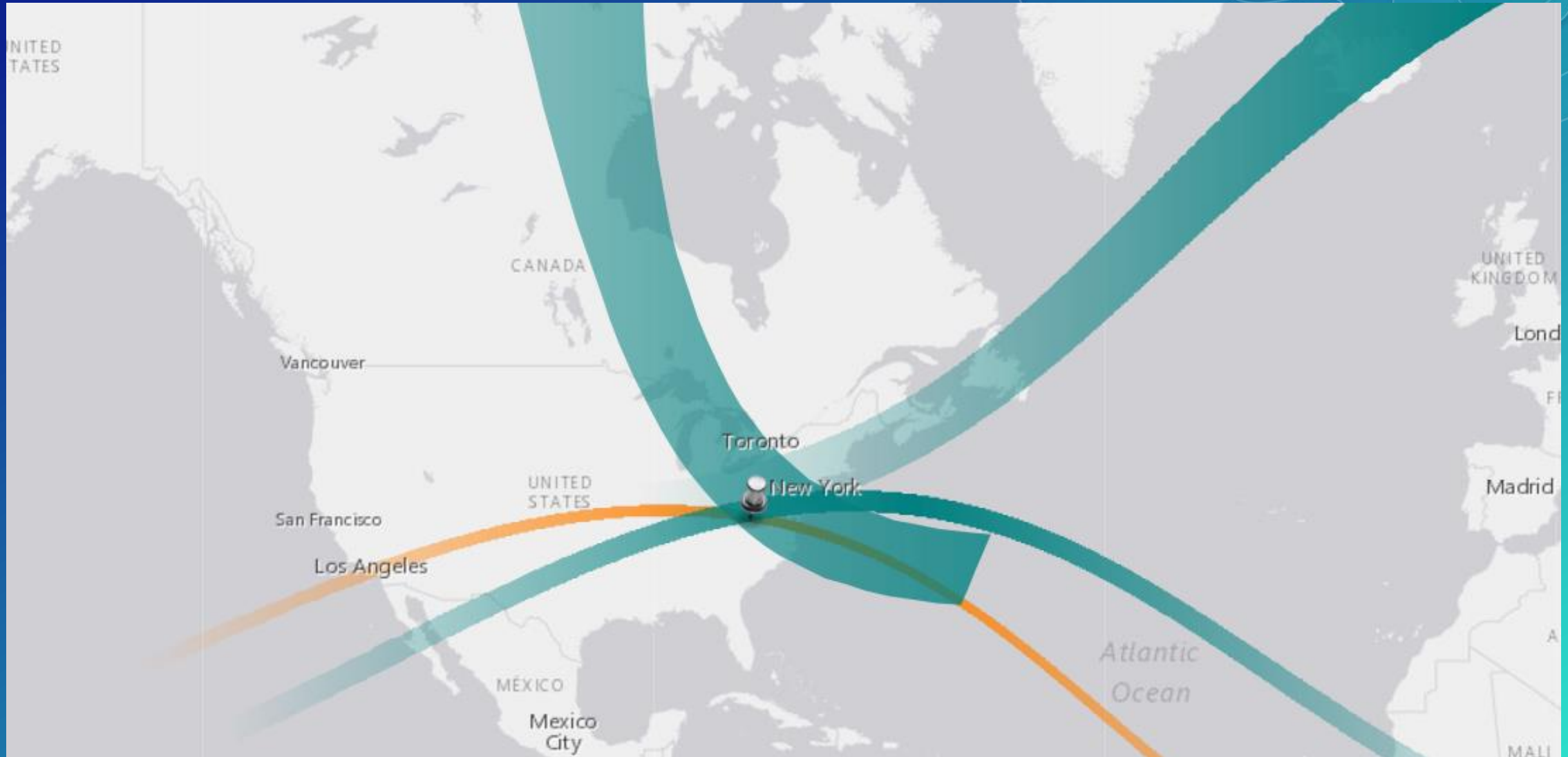
Animation Example: ArcGIS Server architecture at 10.1



Data slides are not really about the data.
They are about the meaning of the data.

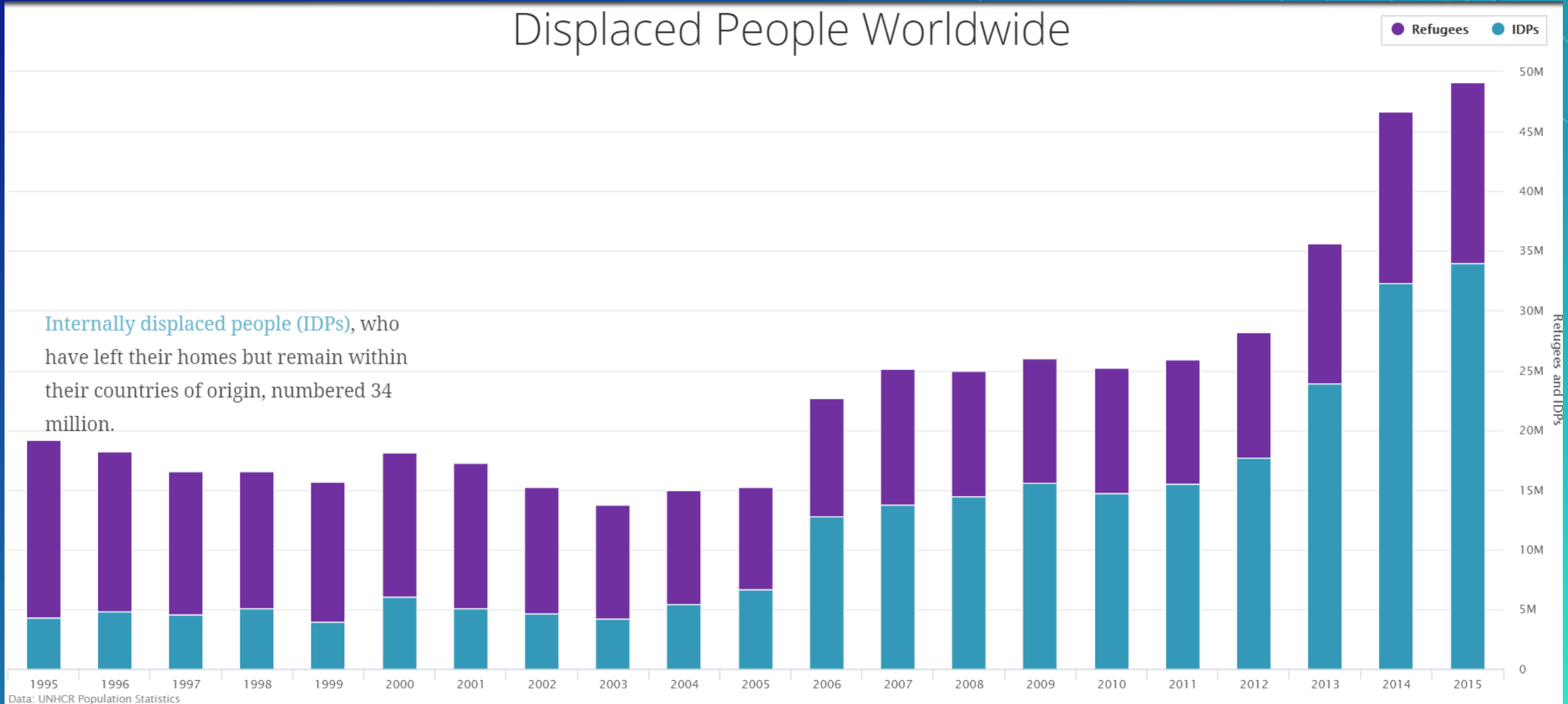
Nancy Duarte

Get to the point

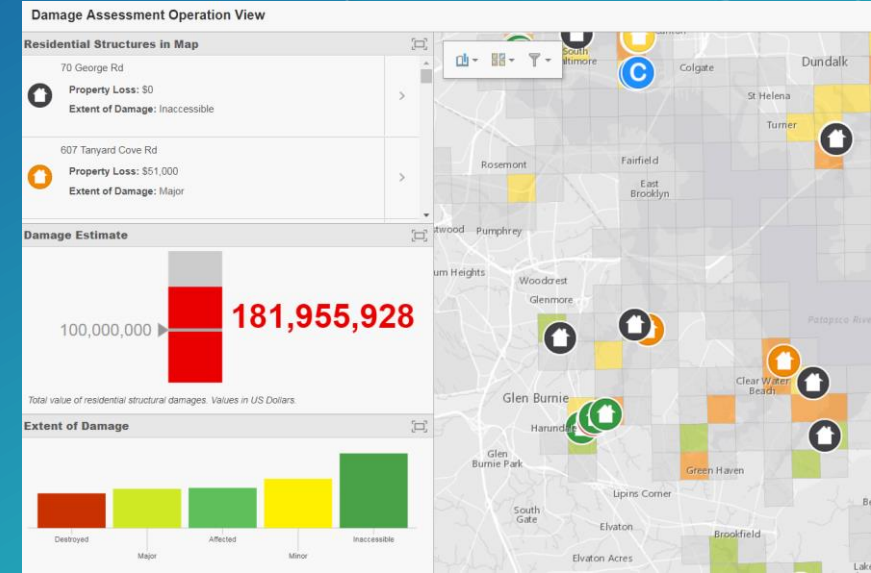
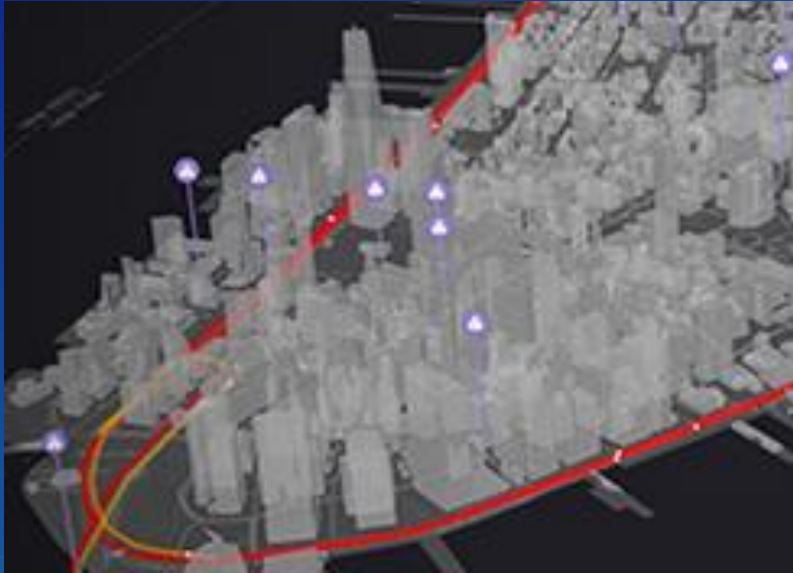


Get to the point

Displaced People Worldwide



Pick the right tool for the job



Pick the right tool for the job

Slide show

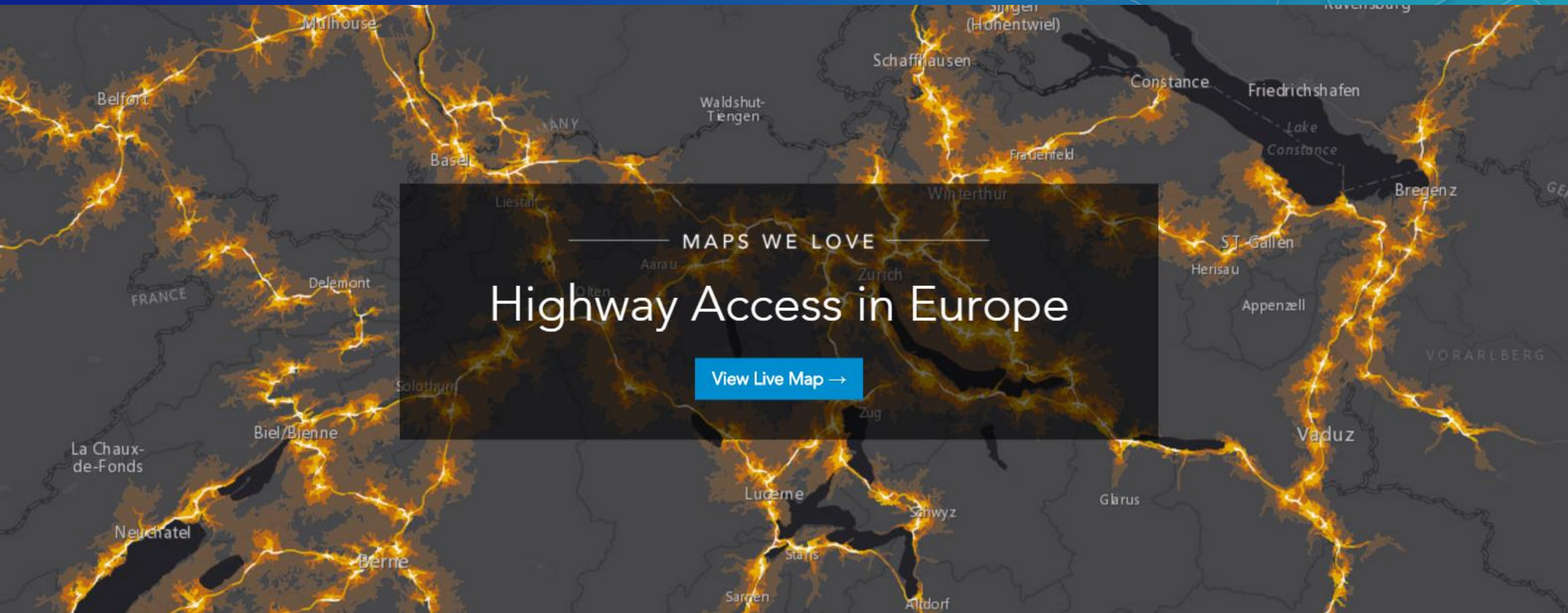
Demo

Video

Diagram

Talk

Highlight what's important



Keep it simple

How?

WE ARE SEEING SUCCESS...

...A PATTERN IS EMERGING

ACROSS EVERY INDUSTRY...

...INITIATIVES SMALL TO LARGE

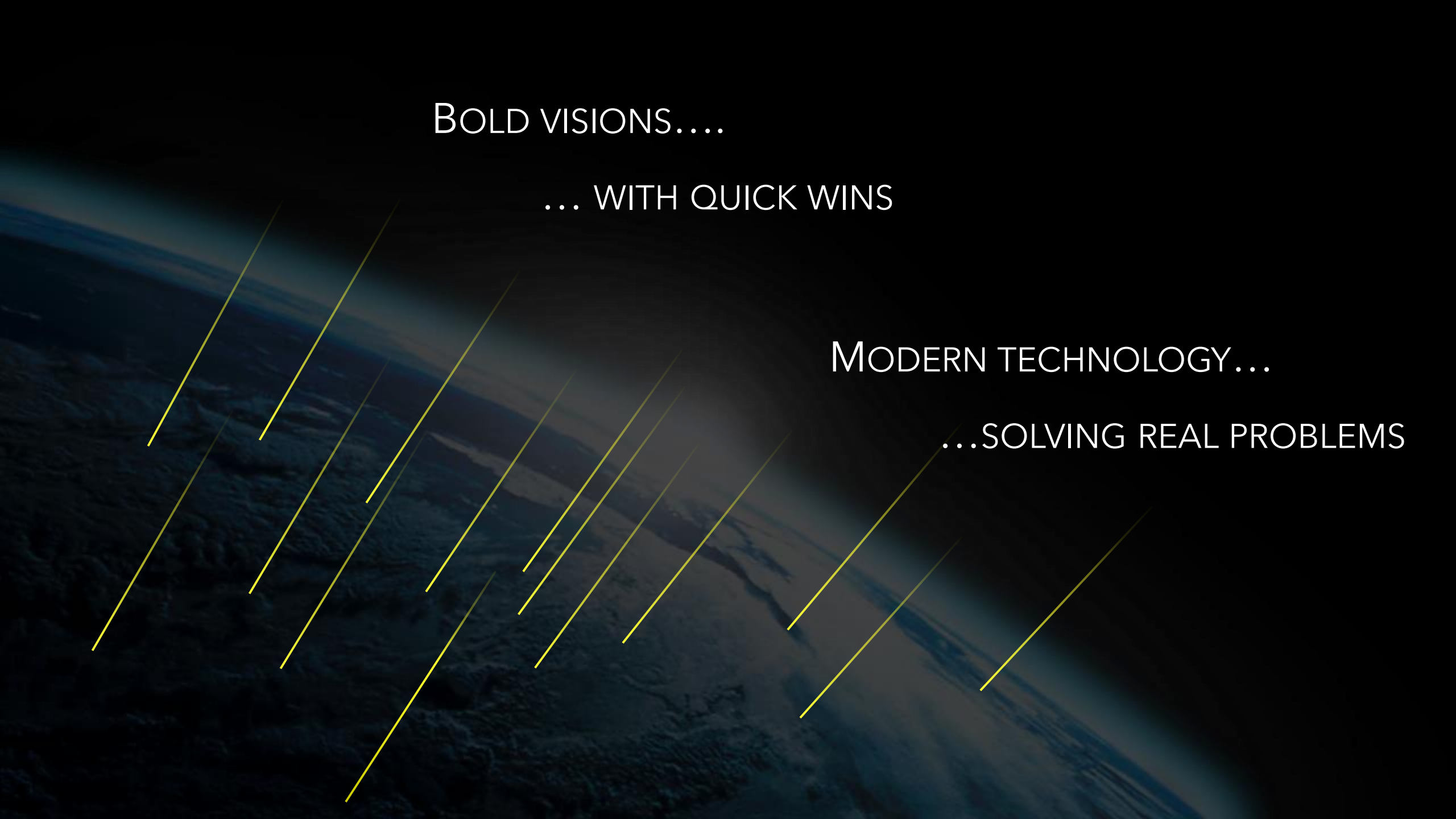


BOLD VISIONS....

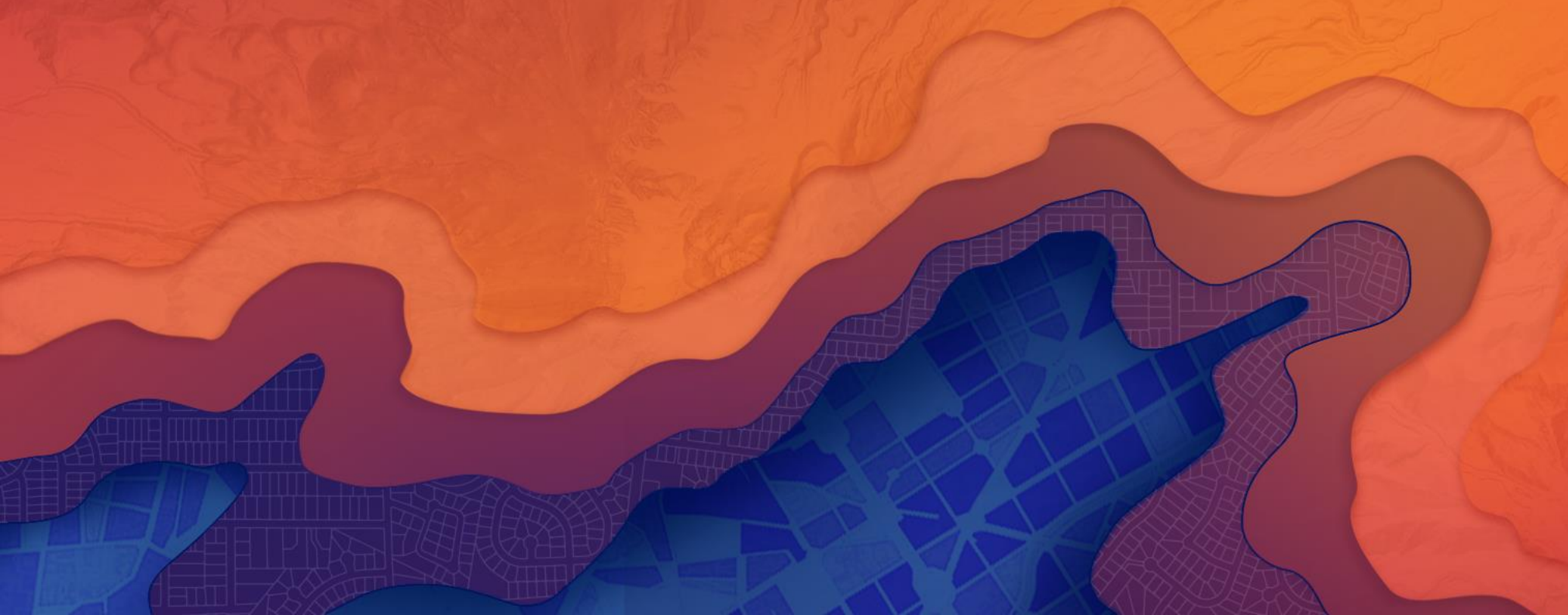
... WITH QUICK WINS

MODERN TECHNOLOGY...

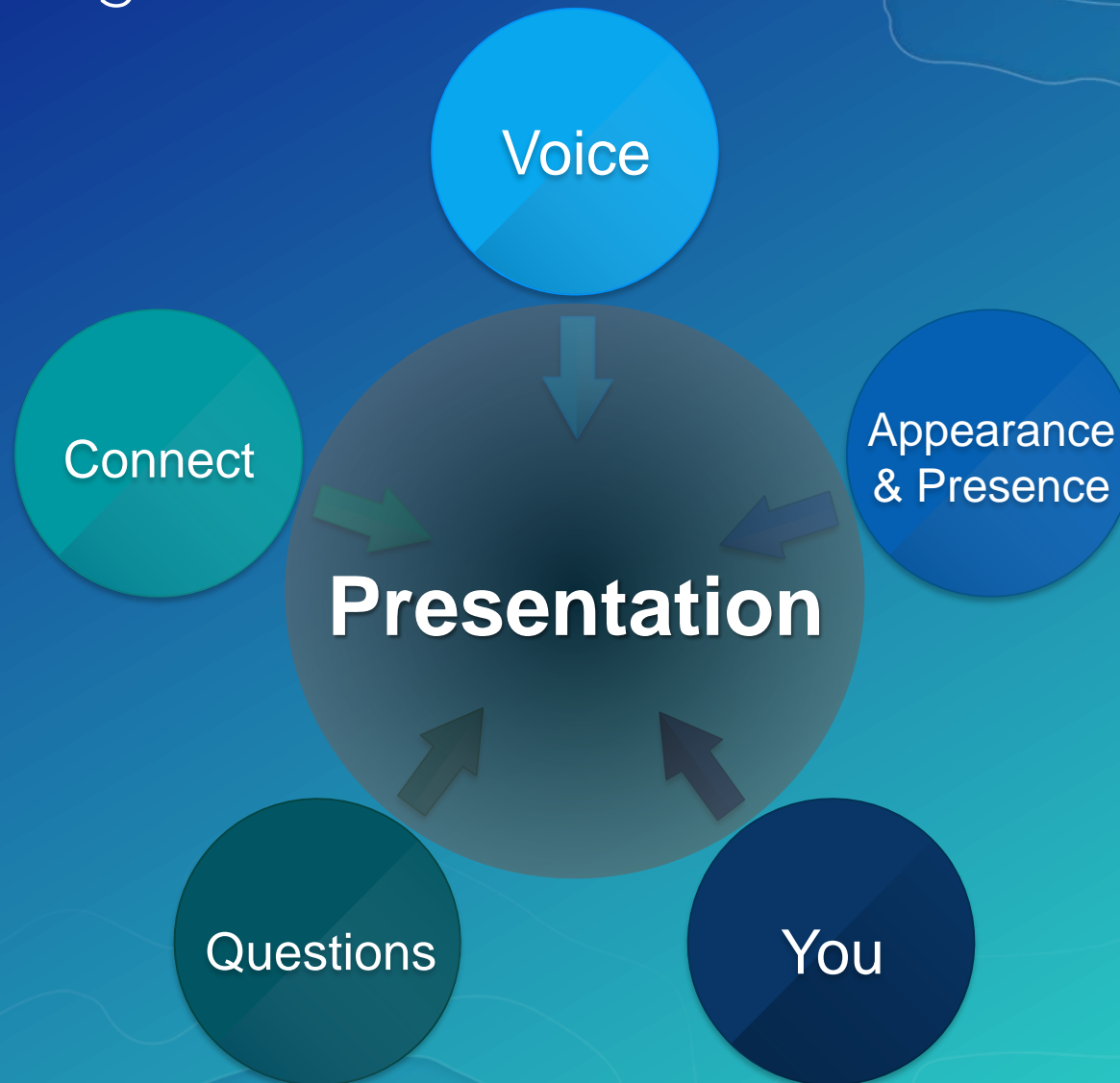
...SOLVING REAL PROBLEMS



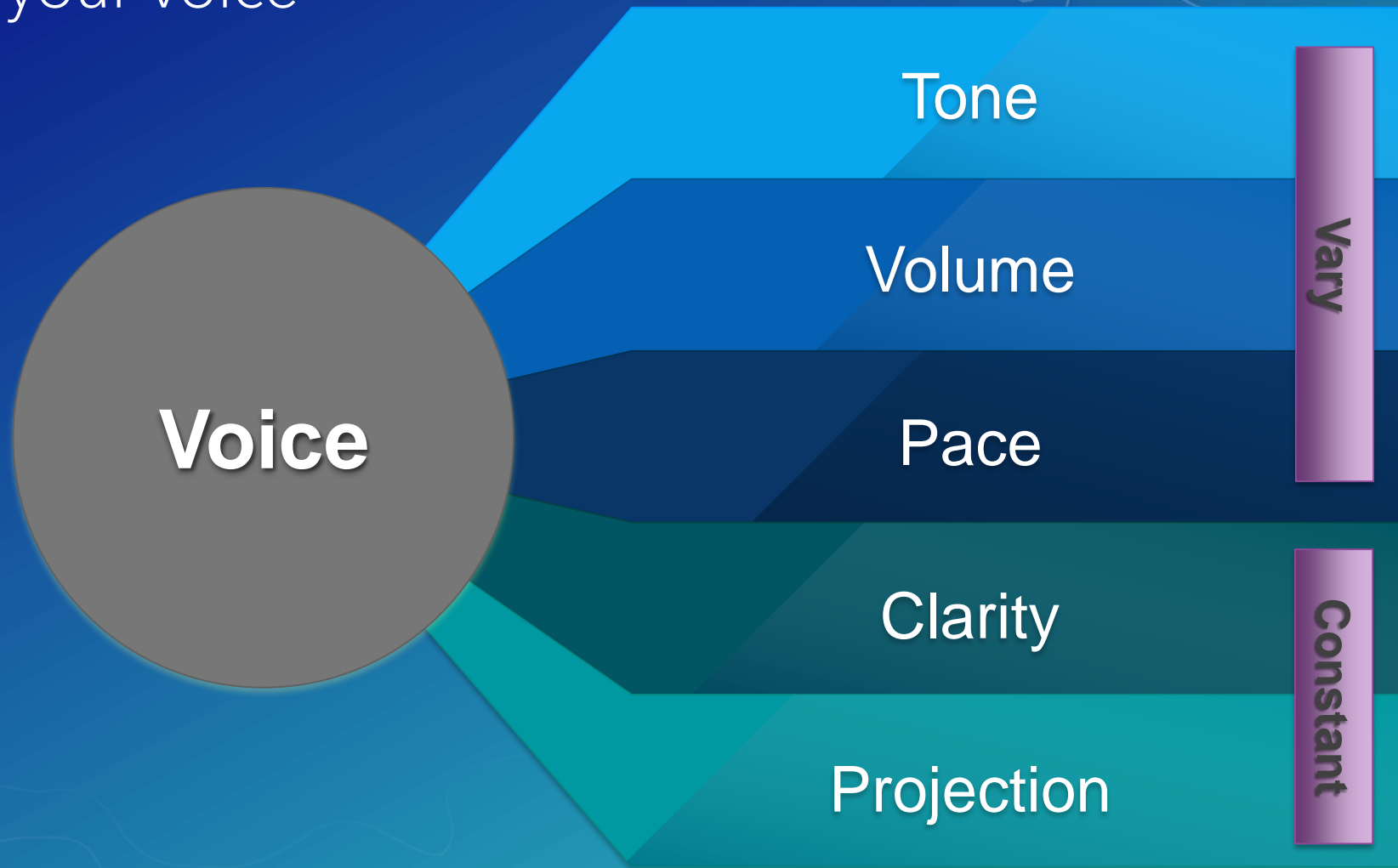
Deliver your message



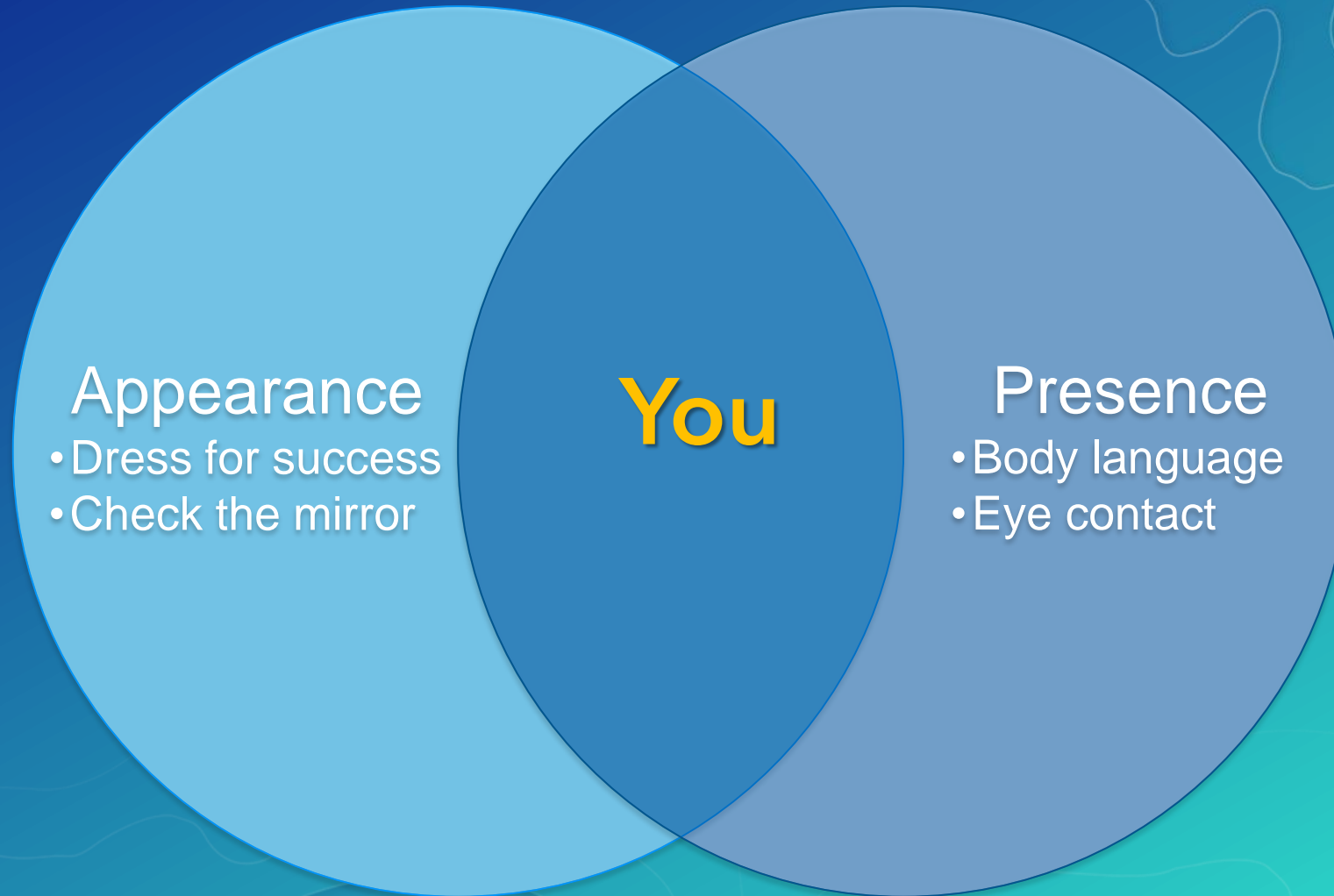
Deliver your message



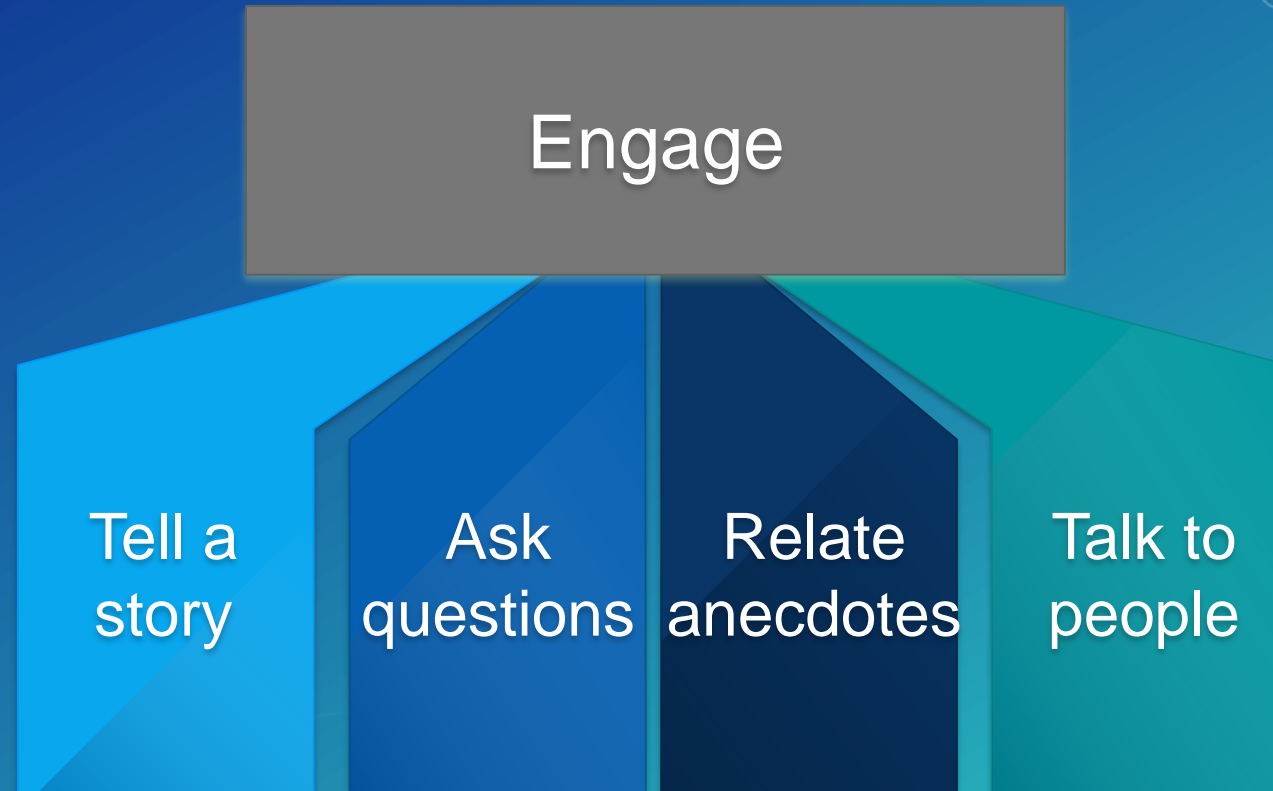
Using your voice



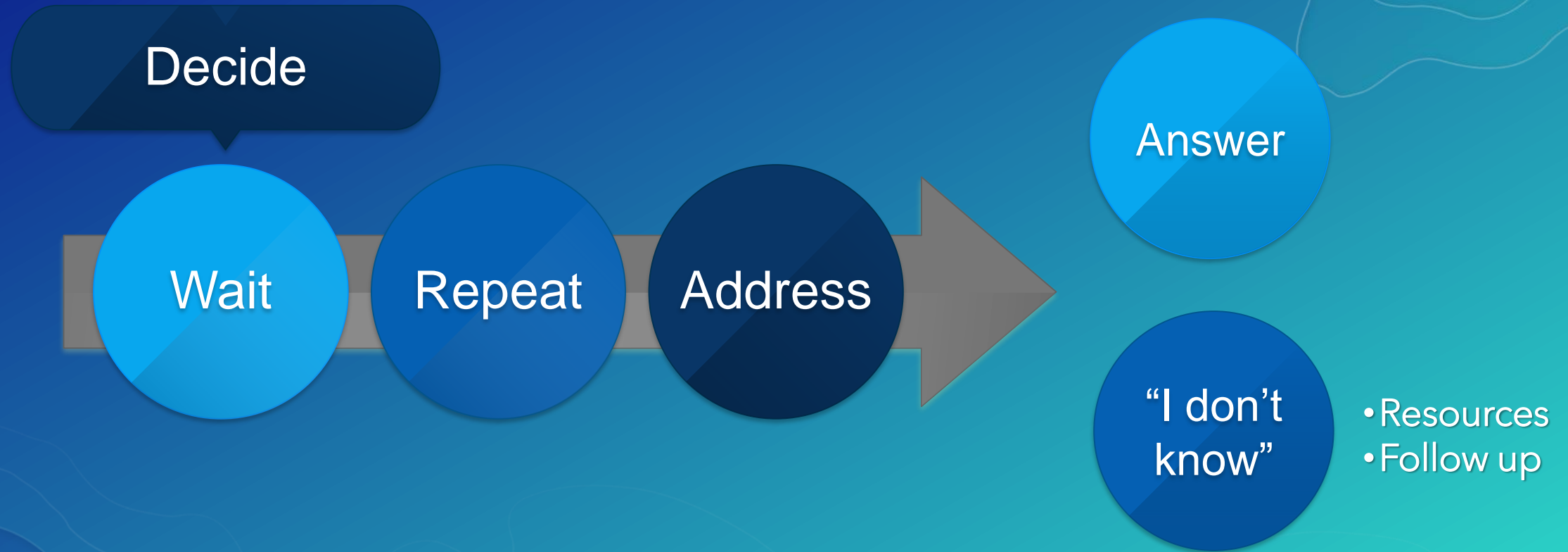
Presence and appearance



Connect with your audience



Handling questions



Giving your presentation

You
telling your
story

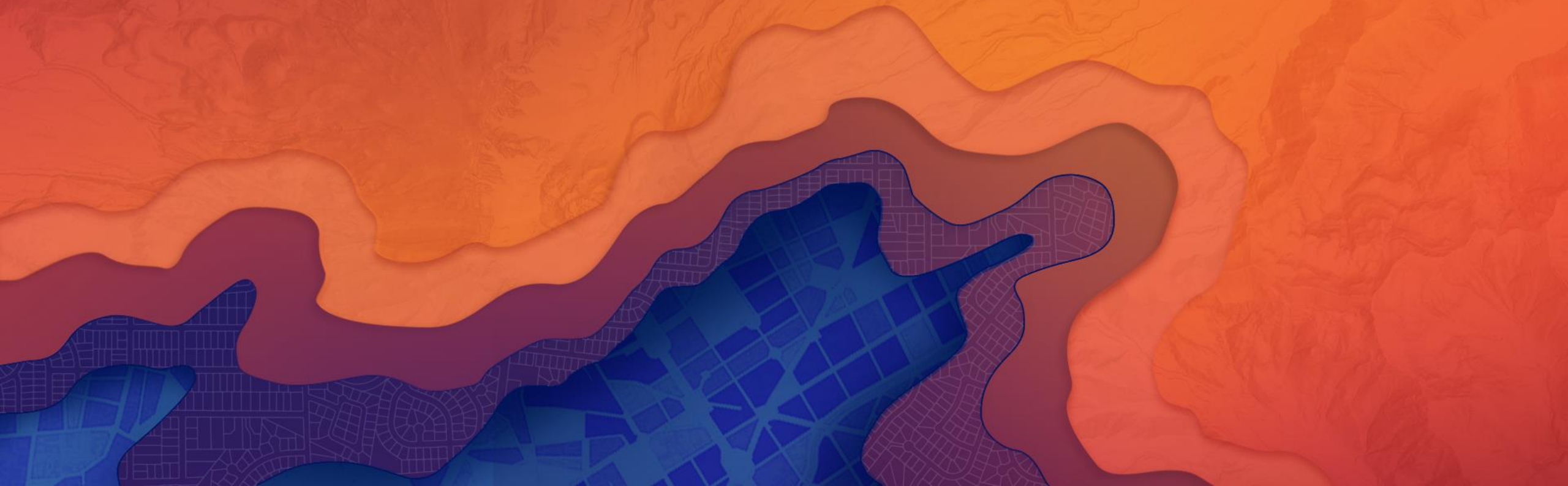
Be prepared

- Knowledge
- Practice
- Contingencies

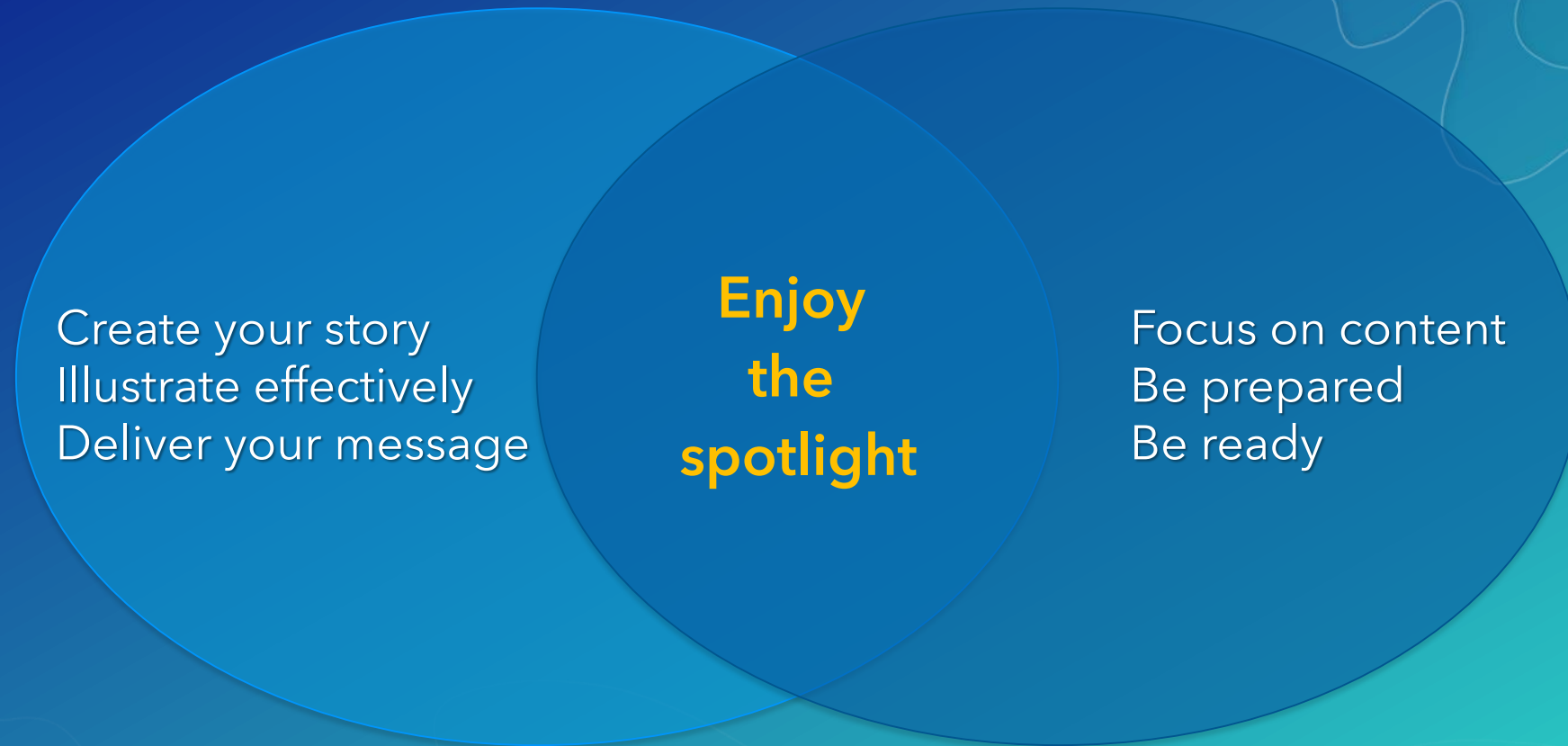
Be ready

- Address physical needs
- Breathe
- Water

Conclusion



Telling your story



Speaker resources

Speaker Resource Center Room 33 B/C

Monday–NOON-5:00 PM

Tuesday–7:00 AM-5:00 PM

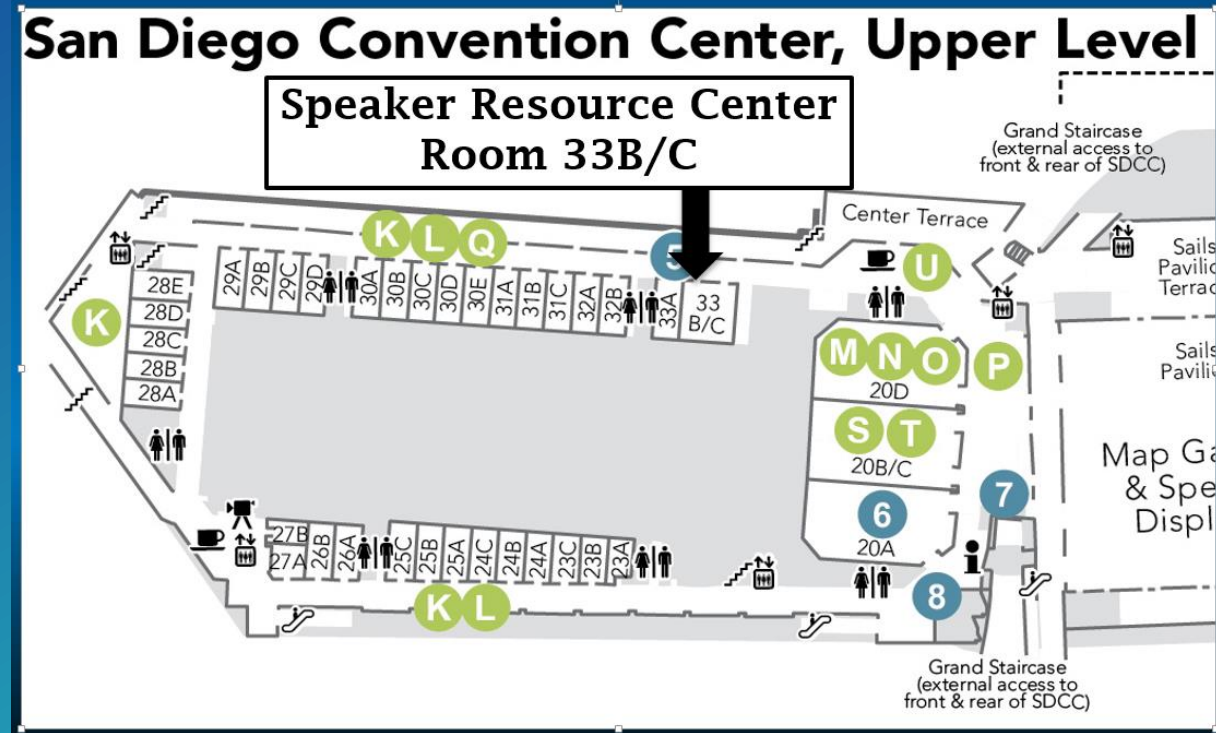
Wednesday–7:00 AM-5:00 PM

Thursday–7:00 AM-3:00 PM

Presentation Skills Workshop Room 32 A/B

Monday–12:30 PM-1:30 PM

Tuesday–7:00 AM-8:00 AM, 12:00 PM – 1:00 PM

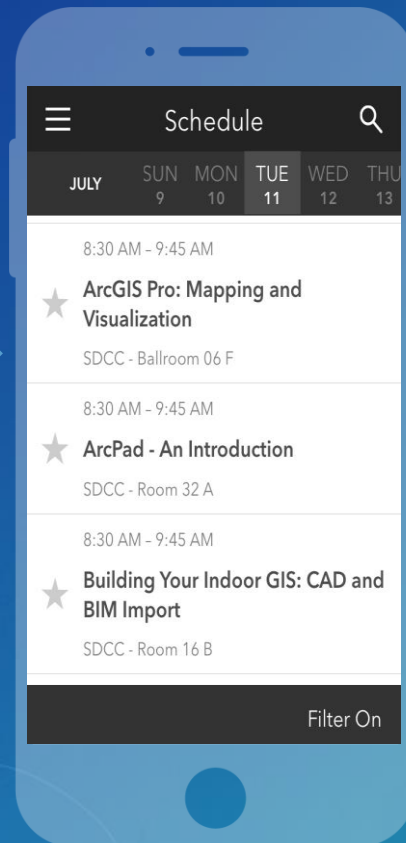


Please take our survey on the Esri Events App

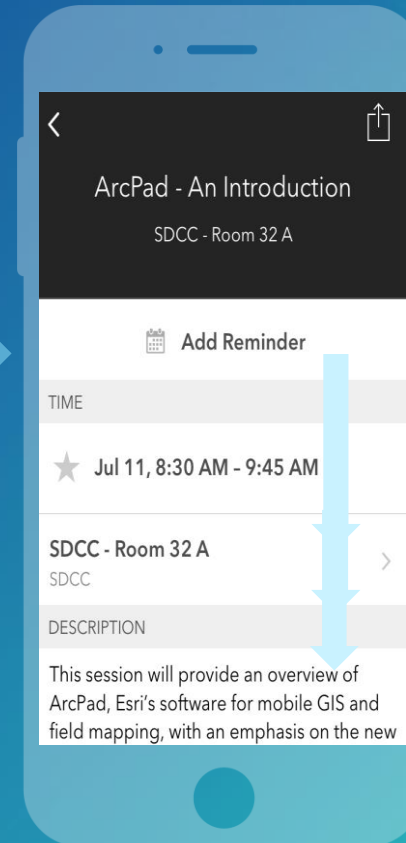
Download the Esri Events app and find your event



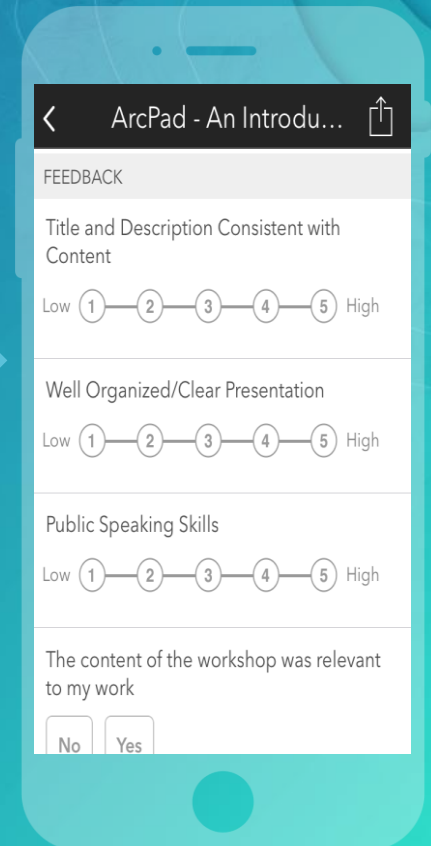
Select the session you attended



Scroll down to find the survey



Complete Answers and Select "Submit"





esri

THE
SCIENCE
OF
WHERE