

Editing Multi-user Geodatabases : An Introduction

Rudy Prosser

Jim Gough

Overview

Introduction to
the Multi-user
Geodatabase



Multi-user
Geodatabase
Editing
Strategies



Geodatabase
Archiving



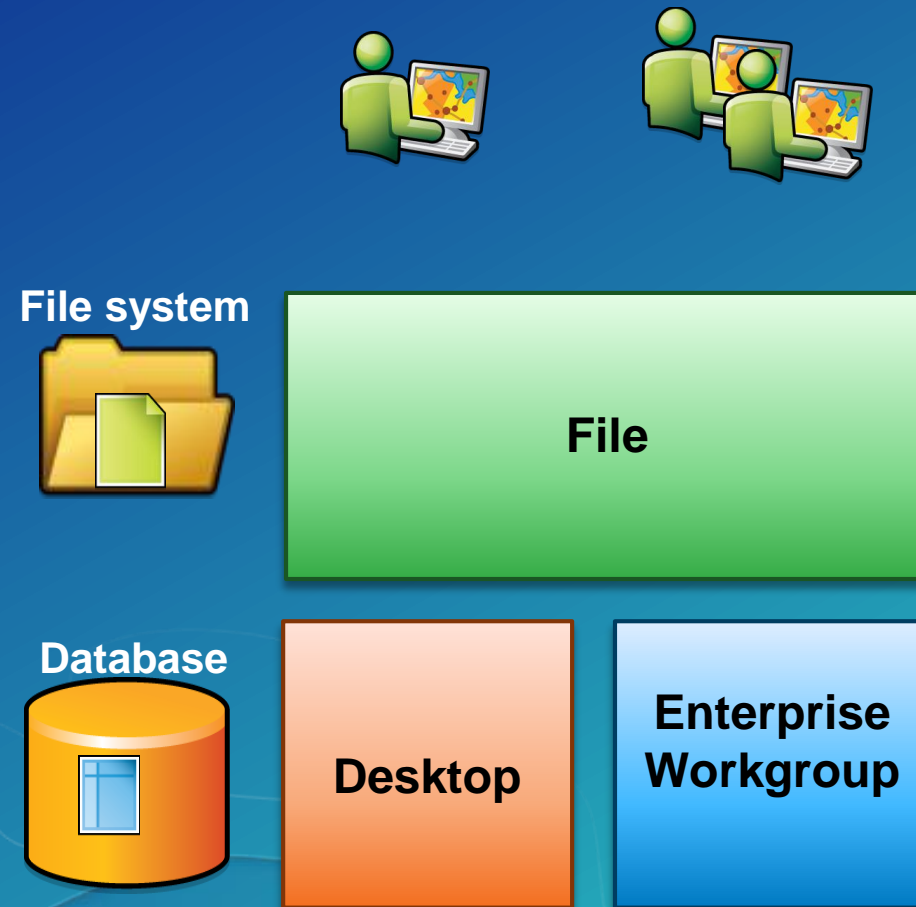
Geodatabase
Replication



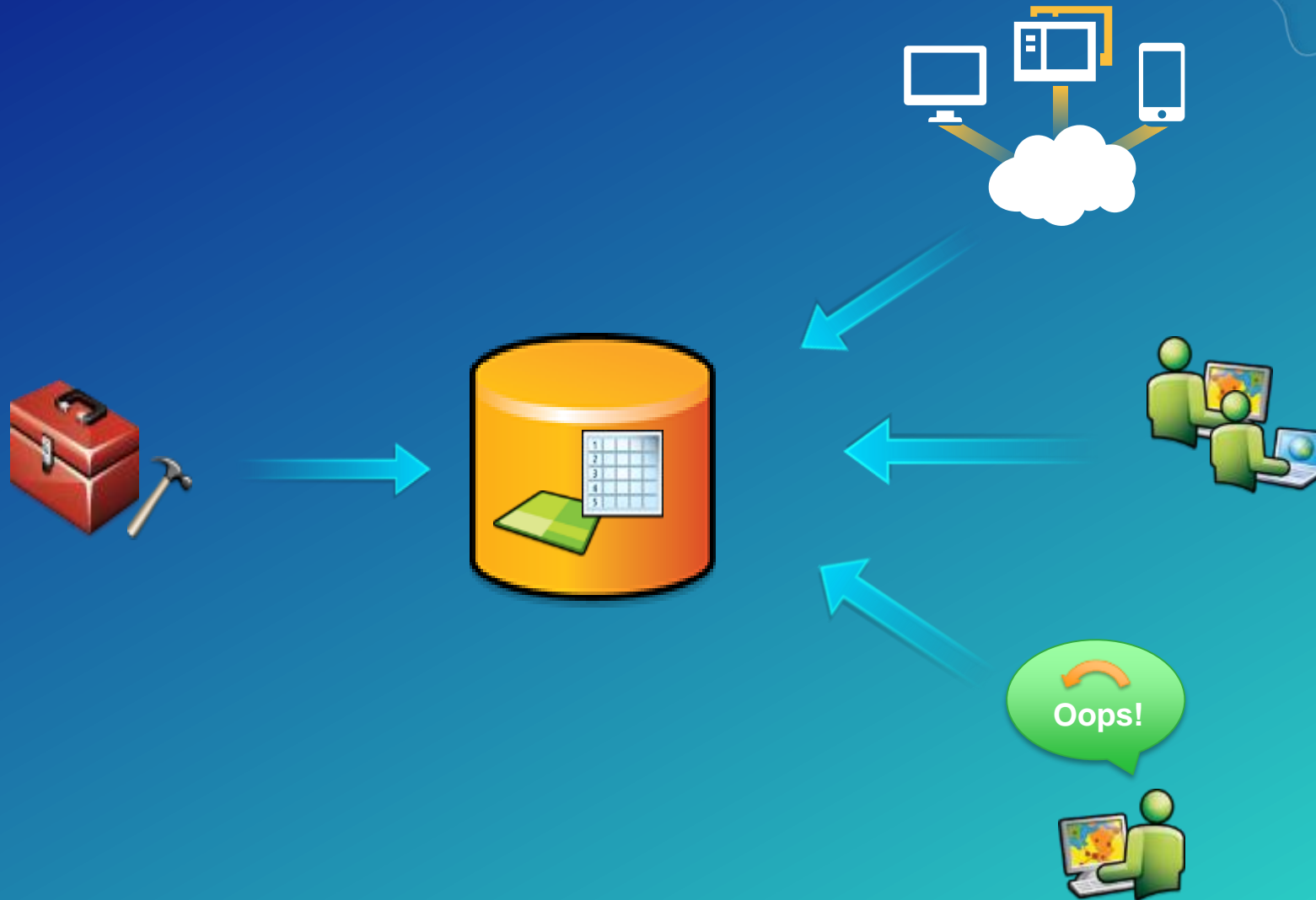
Questions and
Answers

Setup

Types of Geodatabases



Multi-user Geodatabase Data Management



Three ways to edit Multi-user Geodatabases

- Non-Versioned Editing (Short Transactions)
- Versioned Editing (Long Transactions)
- Versioned Move to Base (Hybrid)

Three ways to edit Multi-user Geodatabases

- **Non-Versioned Editing (Short Transactions)**
- **Versioned Editing (Long Transactions)**
- **Versioned Move to Base (Hybrid)**

Non-Versioned Editing

Base Table Airports

ObectID	Shape	Code
1	1	
2	2	FSD
3	3	MSN

ANDREW →

← OLIVIA

- Directly editing the base tables
- Benefits IT integration
- Database integrity rules
- Simple data only (Points, Lines, Polygons)

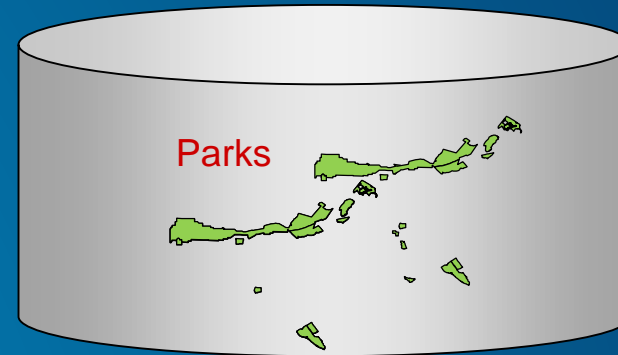
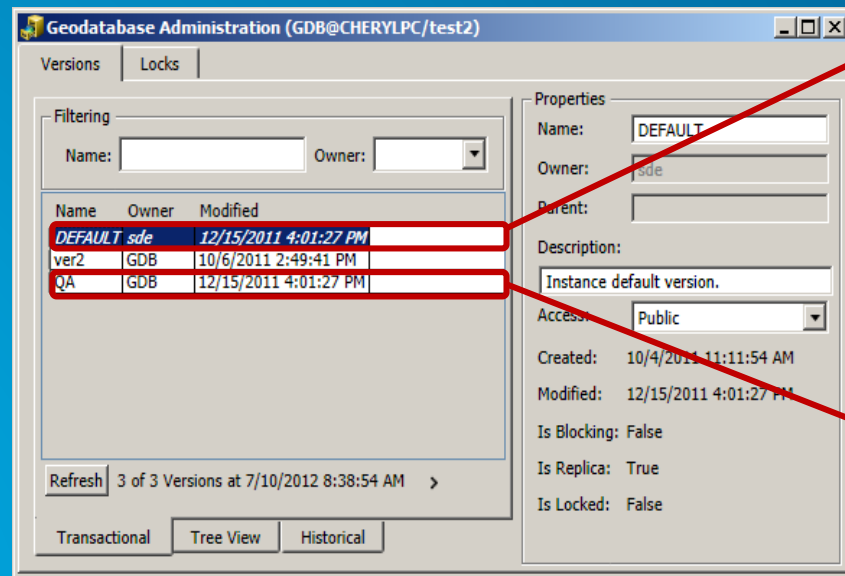
ANDREW



OLIVIA



Versioning



Versioning: How it Works

Registering data as versioned

This creates the delta tables

1	2	
3	4	5

Base Table

ObjectID	Perimeter	Bldg_Code
1	10105.15	02
2	10105.15	02
3	11348.31	02
4	10827.18	02
5	11348.31	02

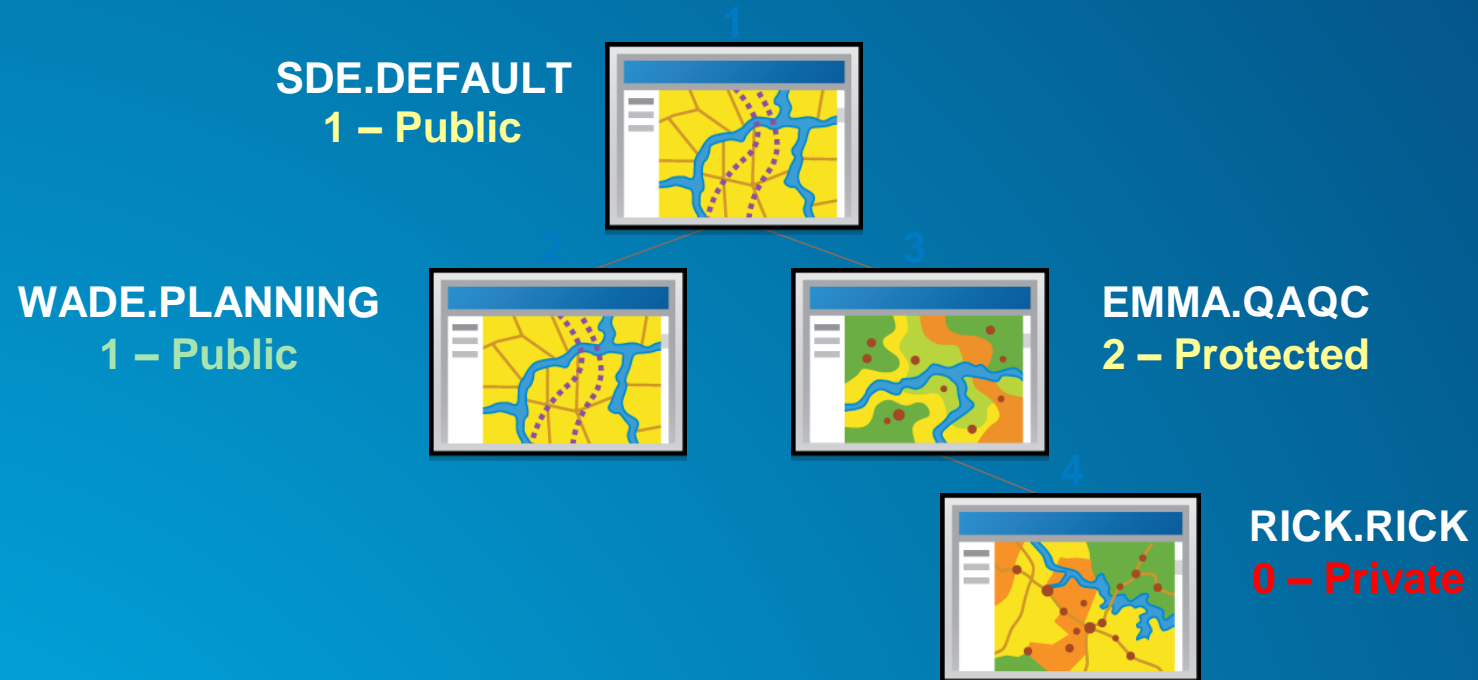
Adds Table

ObjectID	Perimeter	Bldg_Code	SDE_State_ID

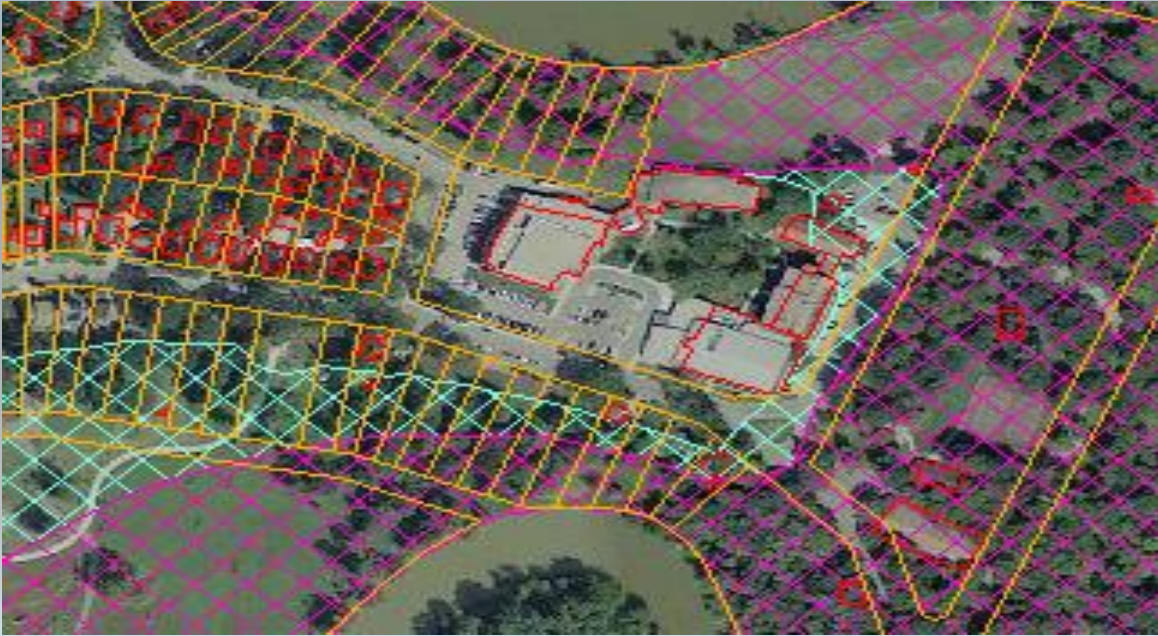
Deletes Table

Deleted_At	Deletes_Row_ID	SDE_State_ID

Defining a version

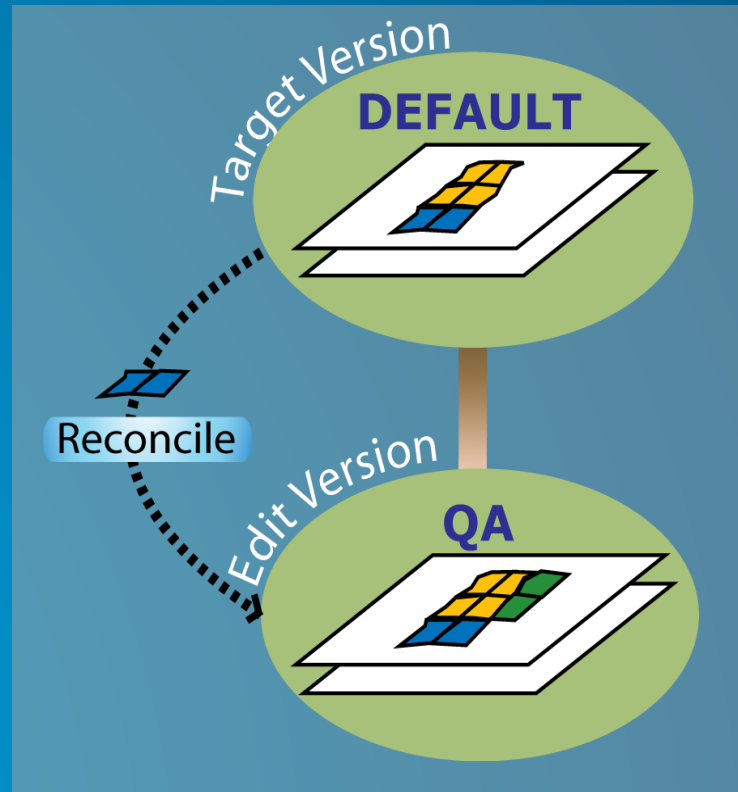


Versioned Editing Demo



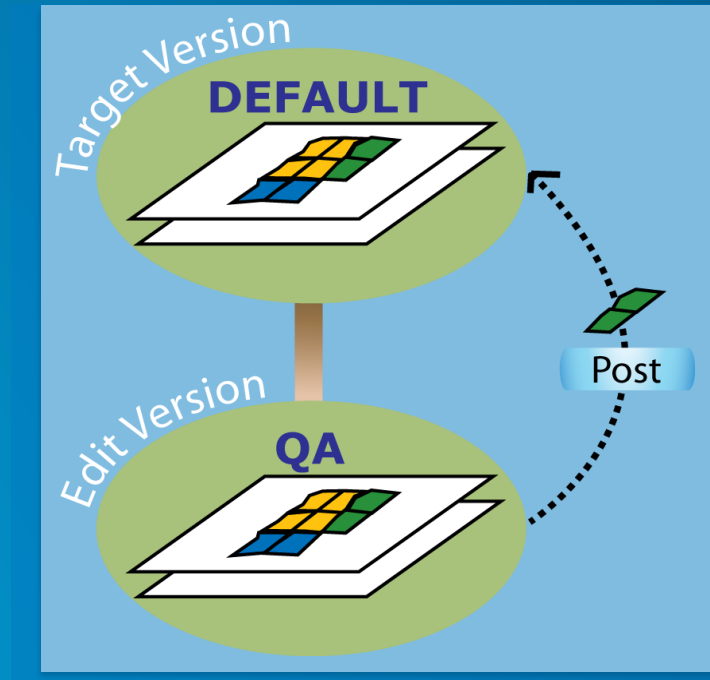
Versioned Editing – Reconcile

- Incorporate changes from the target version

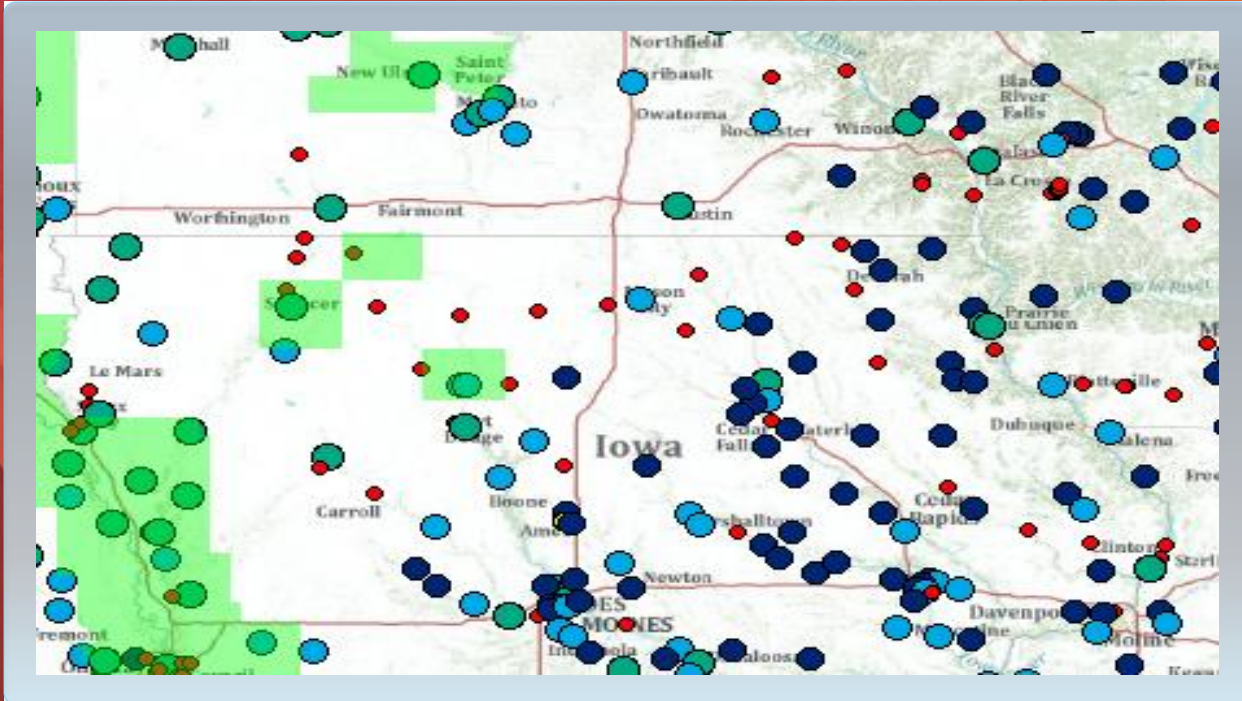


Versioned Editing – Post

- Incorporate with target version

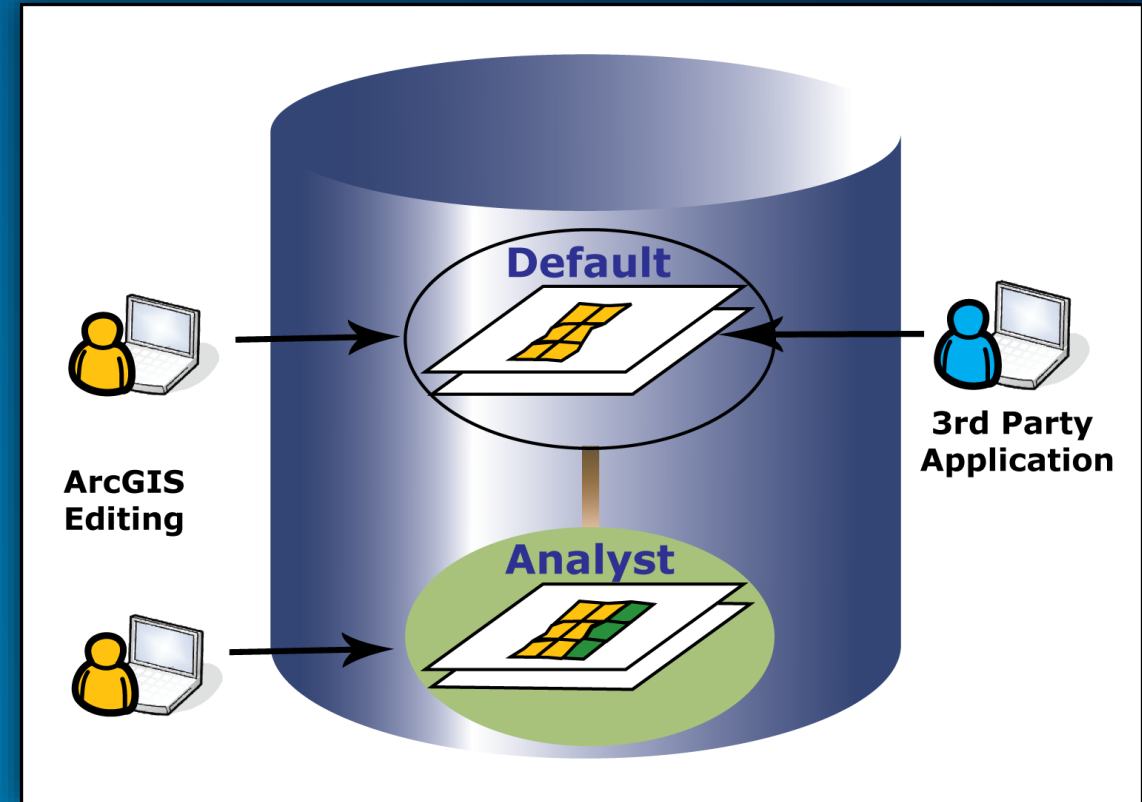


Reconcile & Post Demo



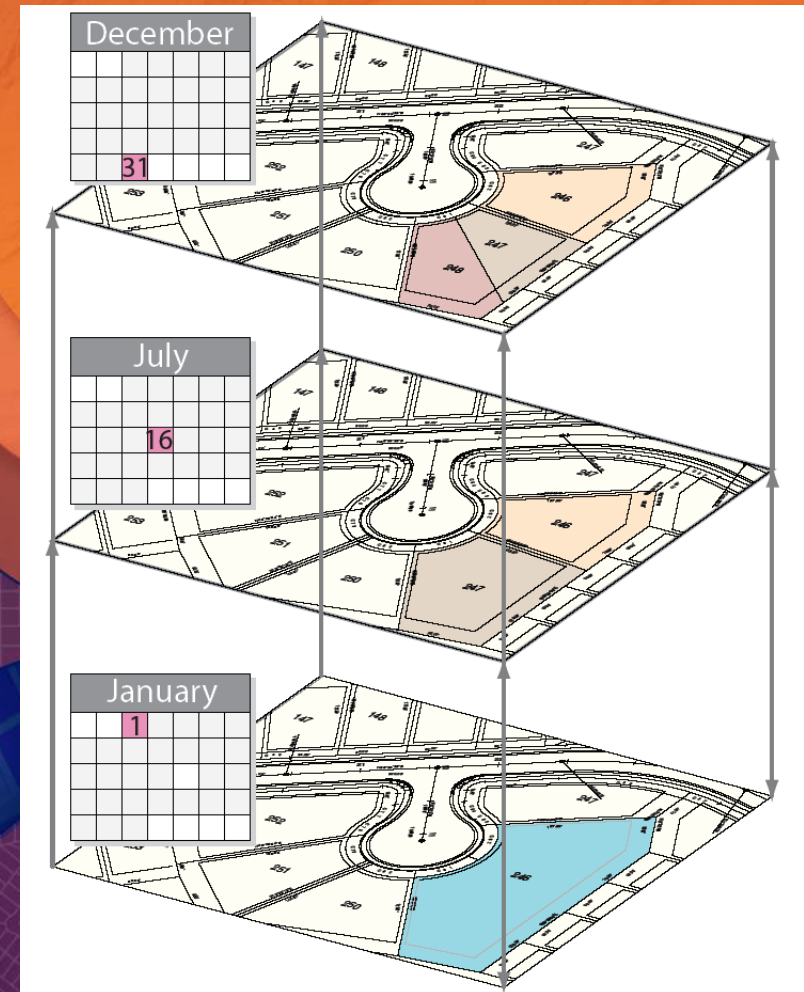
Versioned Editing - Move to Base Option

- Uses Versioned Editing
- When edits posted to DEFAULT
 - Edits are moved to the Base Table
- Simple data only (Points, Lines, Polygons)



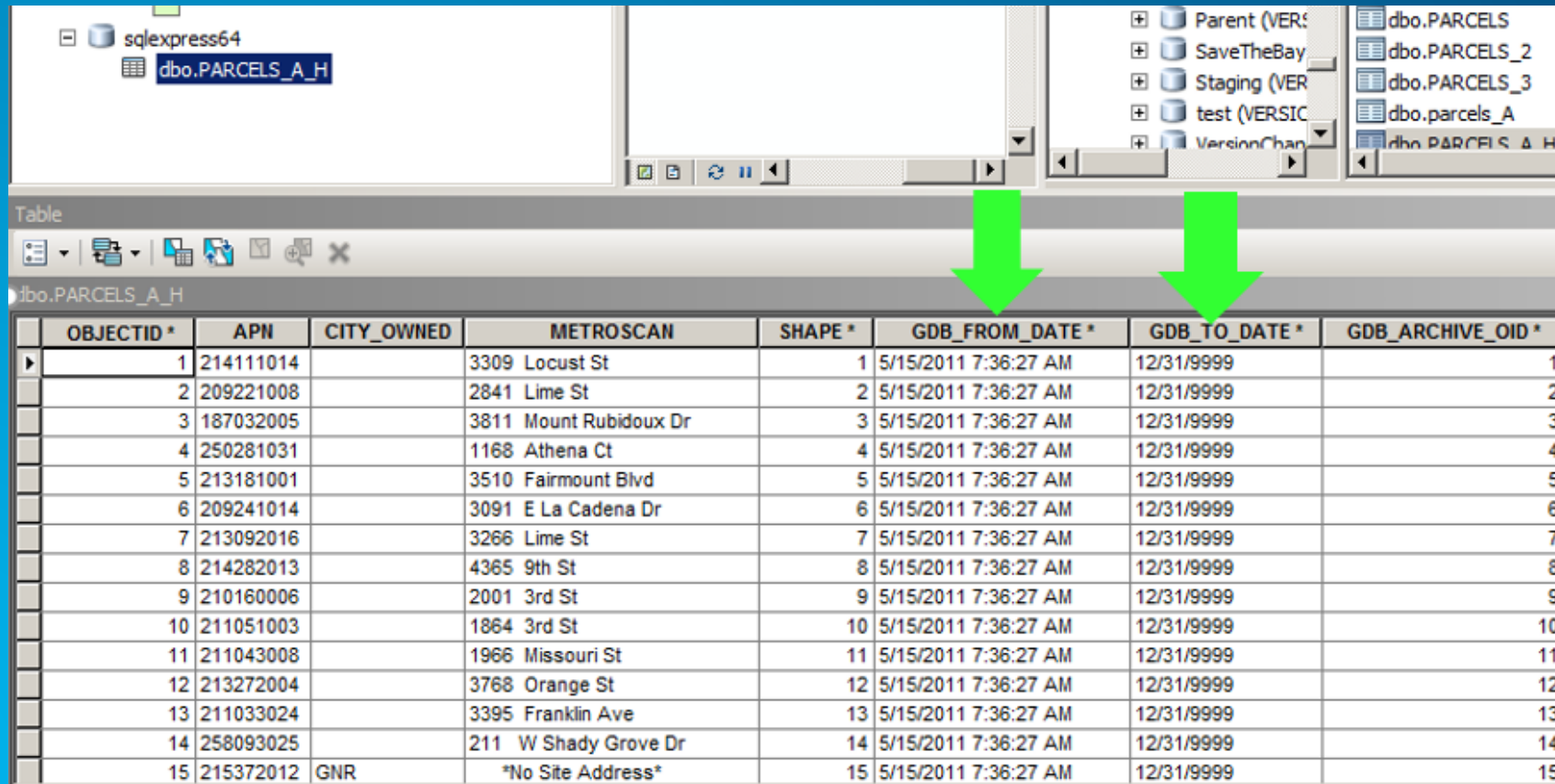
Geodatabase Archiving

- Records Edits Through Time
- Versioned data
- Non-versioned data
- Temporal queries



Overview of geodatabase versioned archiving

- Maintain record of edit transactions
- Edits are preserved in a history class
- Denoted with FROM and TO dates

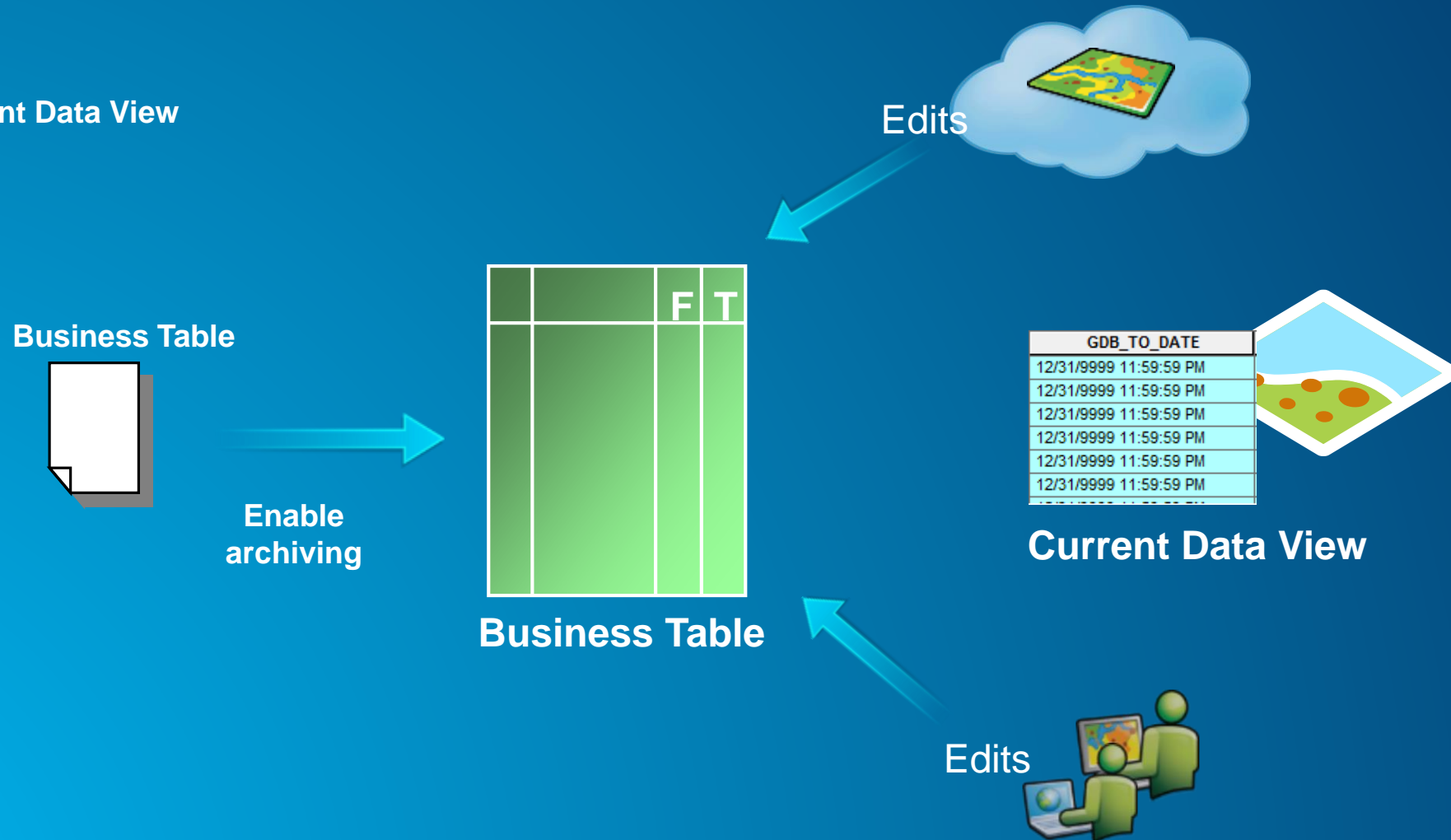


The screenshot shows the Microsoft Access interface with the 'dbo.PARCELS_A_H' table selected. The table contains 15 rows of data, each representing a parcel with its unique identifier (OBJECTID), address (METROSCAN), and versioned edit dates (GDB_FROM_DATE and GDB_TO_DATE). The GDB_ARCHIVE_OID column is empty for all rows.

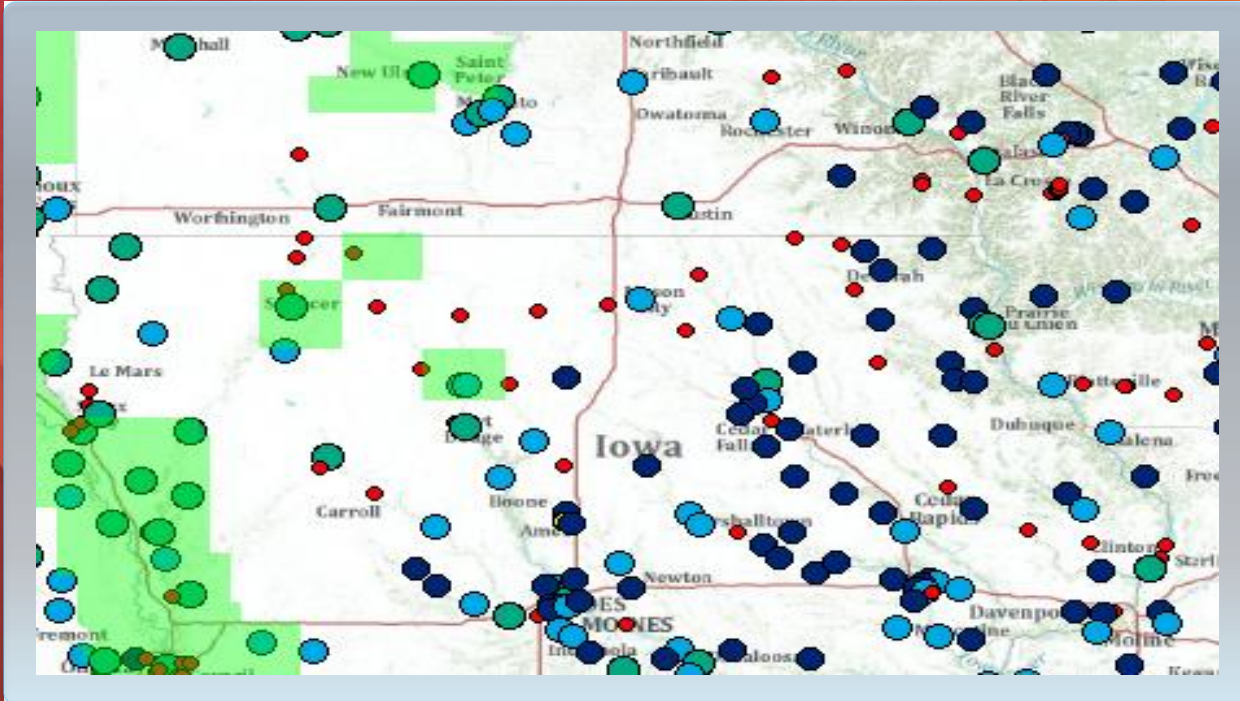
OBJECTID *	APN	CITY_OWNED	METROSCAN	SHAPE *	GDB_FROM_DATE *	GDB_TO_DATE *	GDB_ARCHIVE_OID *
1	214111014		3309 Locust St	1	5/15/2011 7:36:27 AM	12/31/9999	1
2	209221008		2841 Lime St	2	5/15/2011 7:36:27 AM	12/31/9999	2
3	187032005		3811 Mount Rubidoux Dr	3	5/15/2011 7:36:27 AM	12/31/9999	3
4	250281031		1168 Athena Ct	4	5/15/2011 7:36:27 AM	12/31/9999	4
5	213181001		3510 Fairmount Blvd	5	5/15/2011 7:36:27 AM	12/31/9999	5
6	209241014		3091 E La Cadena Dr	6	5/15/2011 7:36:27 AM	12/31/9999	6
7	213092016		3266 Lime St	7	5/15/2011 7:36:27 AM	12/31/9999	7
8	214282013		4365 9th St	8	5/15/2011 7:36:27 AM	12/31/9999	8
9	210160006		2001 3rd St	9	5/15/2011 7:36:27 AM	12/31/9999	9
10	211051003		1864 3rd St	10	5/15/2011 7:36:27 AM	12/31/9999	10
11	211043008		1966 Missouri St	11	5/15/2011 7:36:27 AM	12/31/9999	11
12	213272004		3768 Orange St	12	5/15/2011 7:36:27 AM	12/31/9999	12
13	211033024		3395 Franklin Ave	13	5/15/2011 7:36:27 AM	12/31/9999	13
14	258093025		211 W Shady Grove Dr	14	5/15/2011 7:36:27 AM	12/31/9999	14
15	215372012	GNR	*No Site Address*	15	5/15/2011 7:36:27 AM	12/31/9999	15

Non-versioned Archiving: How it works

- **Current Data View**

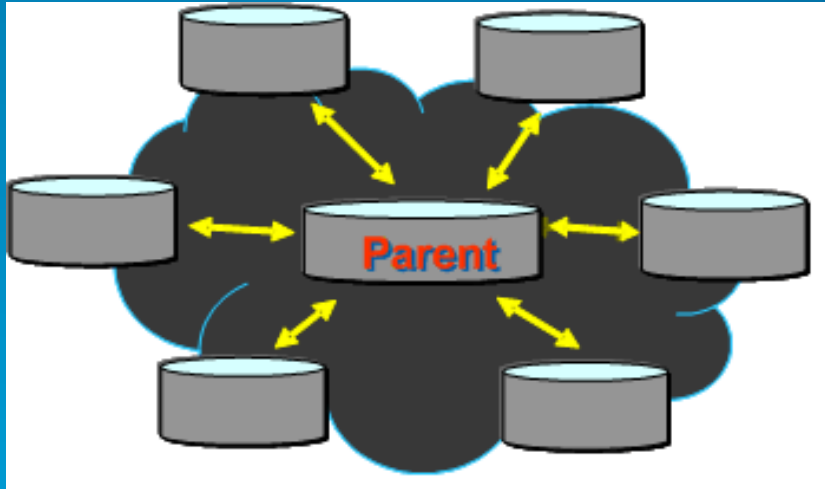
[illegible]

Geodatabase Archiving Demo

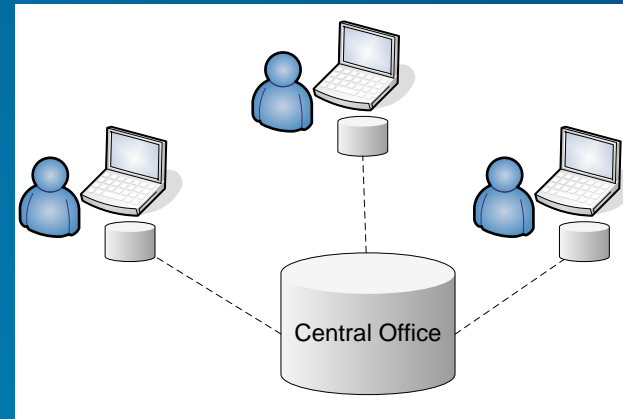


Geodatabase Replication

Central Hub



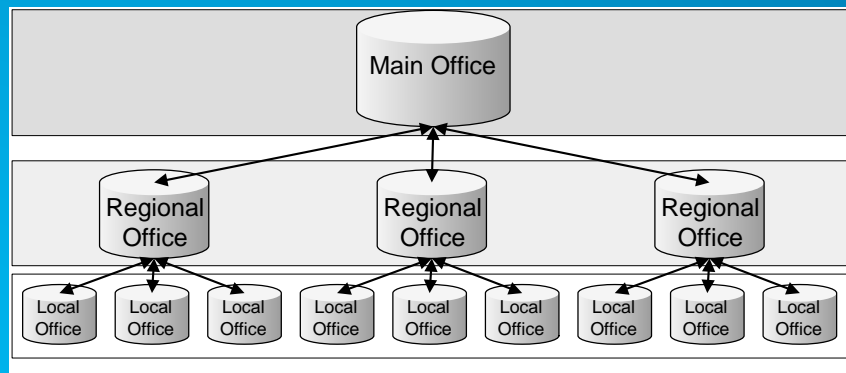
Mobile Users



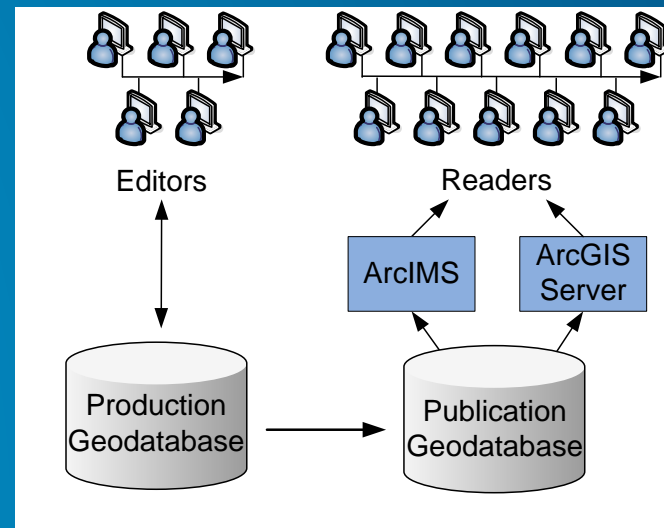
Feature Services with Sync



Multiple levels / Replica Tree



Production / Publication



Replica Types

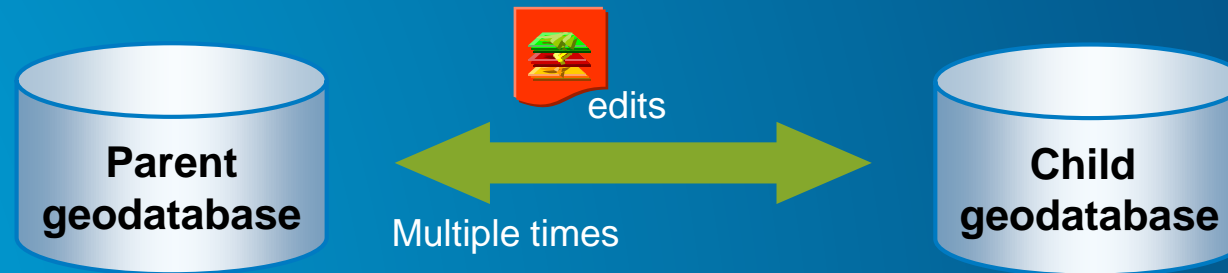
**Check out /
Check in**



One-way



Two-way



Questions

- **Thank you** for Attending!
- **Please complete the Survey**

< Agenda

★ My Sched iCal

3D Analysis: An Overview
Tue Jul 21 8:30 AM - 9:45 AM
Map Room 10
Technical Workshop | 3D and Lidar Data

Technical Workshop Survey >

Jinwu Ma >

Khalid Duri >

Jie Chang >

3D GIS users are moving beyond visualization and need true 3D analysis to solve problems that



esri

THE
SCIENCE
OF
WHERE