



GIS Transformation Via The Living Atlas

Clint Brown, Jim Herries, Lisa Berry

Paul Dodd, Keith VanGraafeiland, Jennifer Bell, Brian Sims

Brought to you by the members of the Living Atlas Team

Welcome to the Living Atlas of the World

The image is a screenshot of the Esri Living Atlas of the World homepage. The background is a composite of two landscape photos: a mountain range in the upper half and a forested valley in the lower half. The page layout includes a top navigation bar with the Esri logo and links to ArcGIS, Industries, About, and Support. On the right of this bar is a user profile icon and a 'Sign In' link. Below the top bar is a dark navigation bar with the title 'Living Atlas of the World' on the left and links to 'Home', 'Benefits', 'My Contributions', and 'My Favorites' on the right. The 'Home' link is underlined. The main content area features a central text block titled 'Content for the Planet' with a descriptive paragraph and two buttons: 'Contribute' and 'Browse'. Surrounding this central area are several blue callout boxes with white text, each pointing to a specific feature on the page. These boxes are labeled: 'Curated' (pointing to the top left), 'Useful Information Items' (pointing to a grid of feature categories), 'Organized by Themes' (pointing to the right), 'Contributions from Users' (pointing to the right), 'Best-Available' (pointing to the bottom left), 'Authoritative' (pointing to the bottom center), and 'A Synthesis of Our Users Work' (pointing to the bottom right). The feature categories grid includes links for Maps, Apps, Scenes, Story Maps, Map Layers, and Analytics.

esri ArcGIS Industries About Support Sign In

Living Atlas of the World Home Benefits My Contributions My Favorites

Curated

Useful Information Items

Maps Apps

Scenes Story Maps

Map Layers Analytics

Organized by Themes

Contributions from Users

Content for the Planet

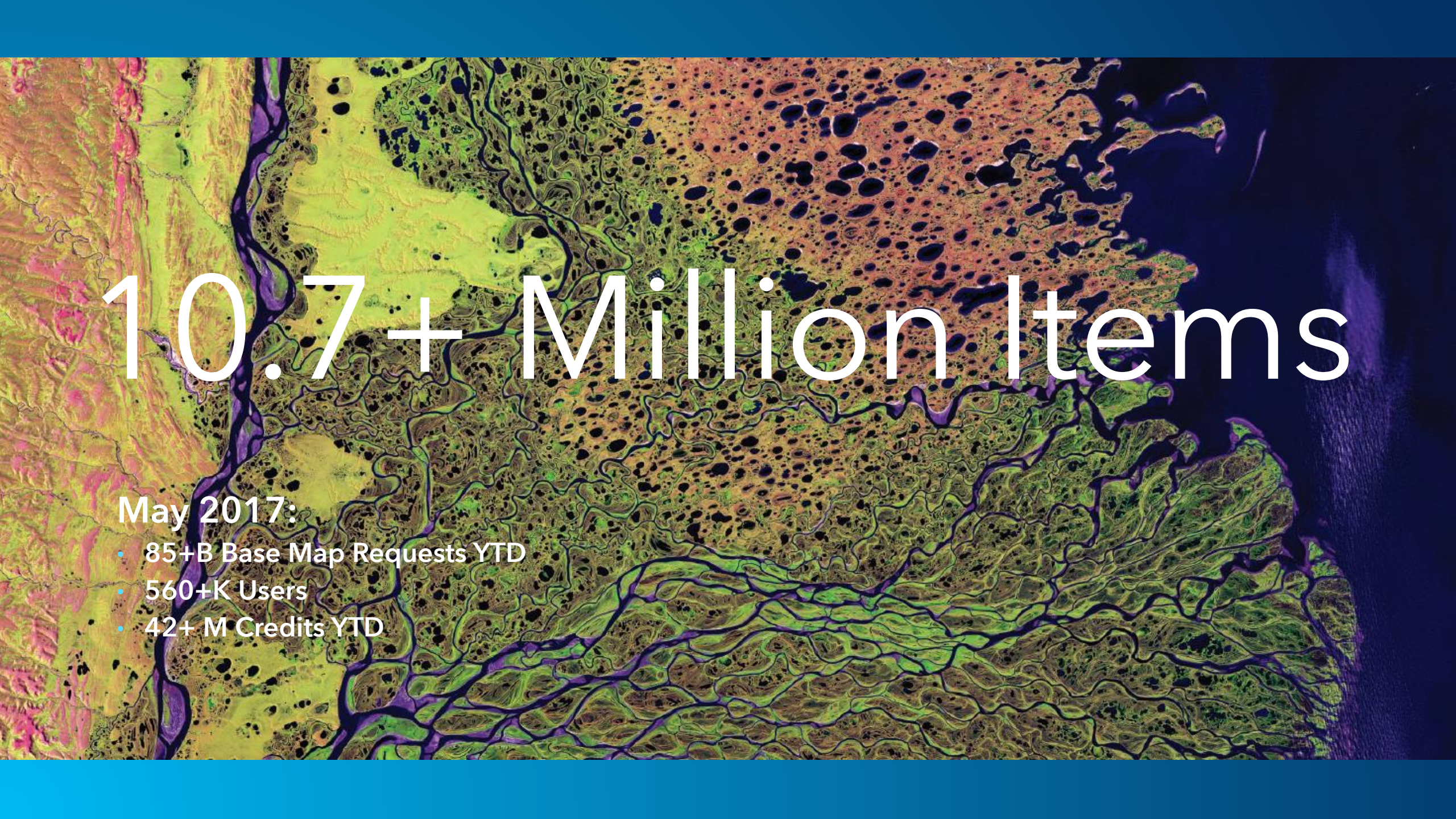
The Living Atlas of the World is the foremost collection of global geographic information used to support critical decision making. [Learn More](#) or read the [FAQ](#).

Contribute Browse

Best-Available

Authoritative

A Synthesis of Our Users Work



10.7+ Million Items

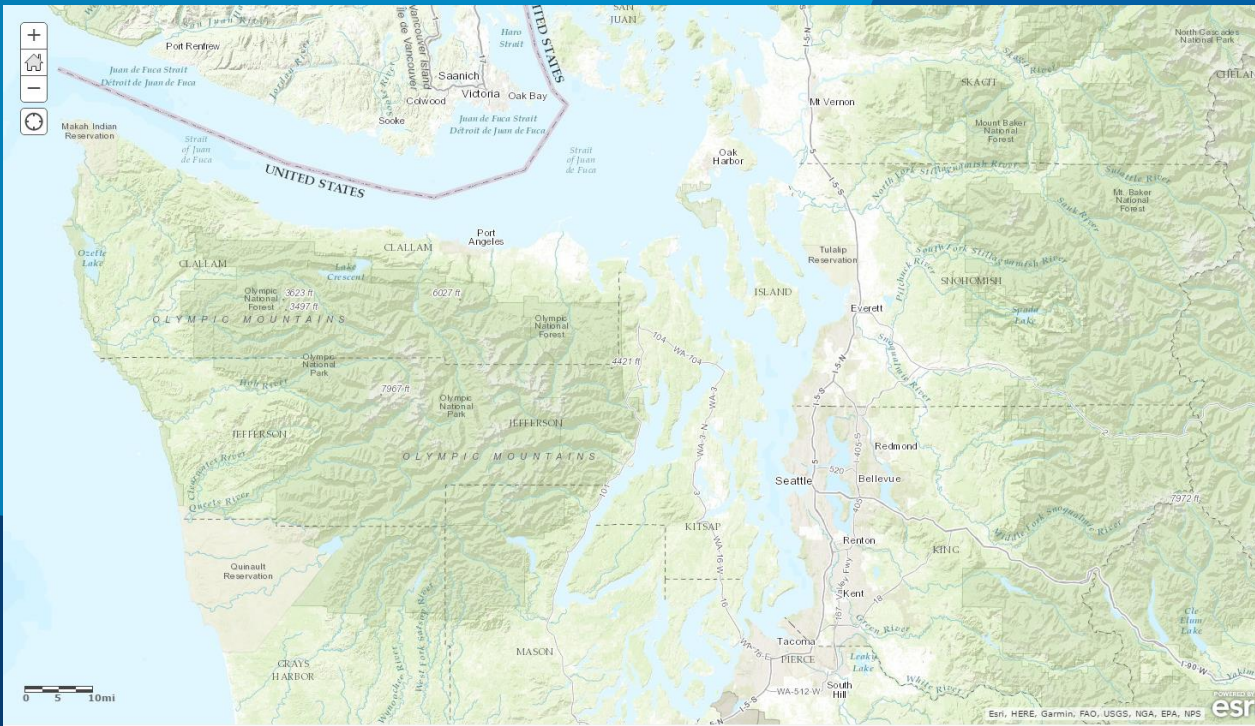
May 2017:

- 85+B Base Map Requests YTD
- 560+K Users
- 42+ M Credits YTD



Base Maps

Imagery for the World



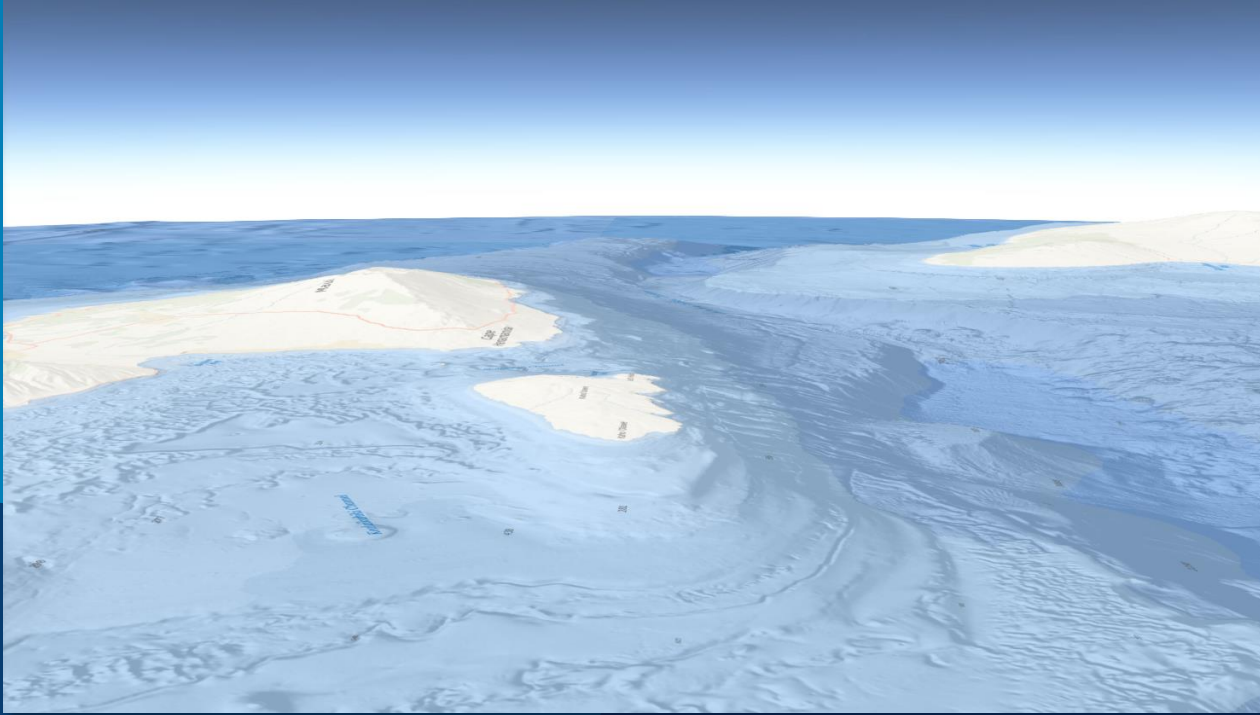
Base Maps

Topographic Basemap



Base Maps

World Streetmap Night with Traffic Counts



3D Basemaps

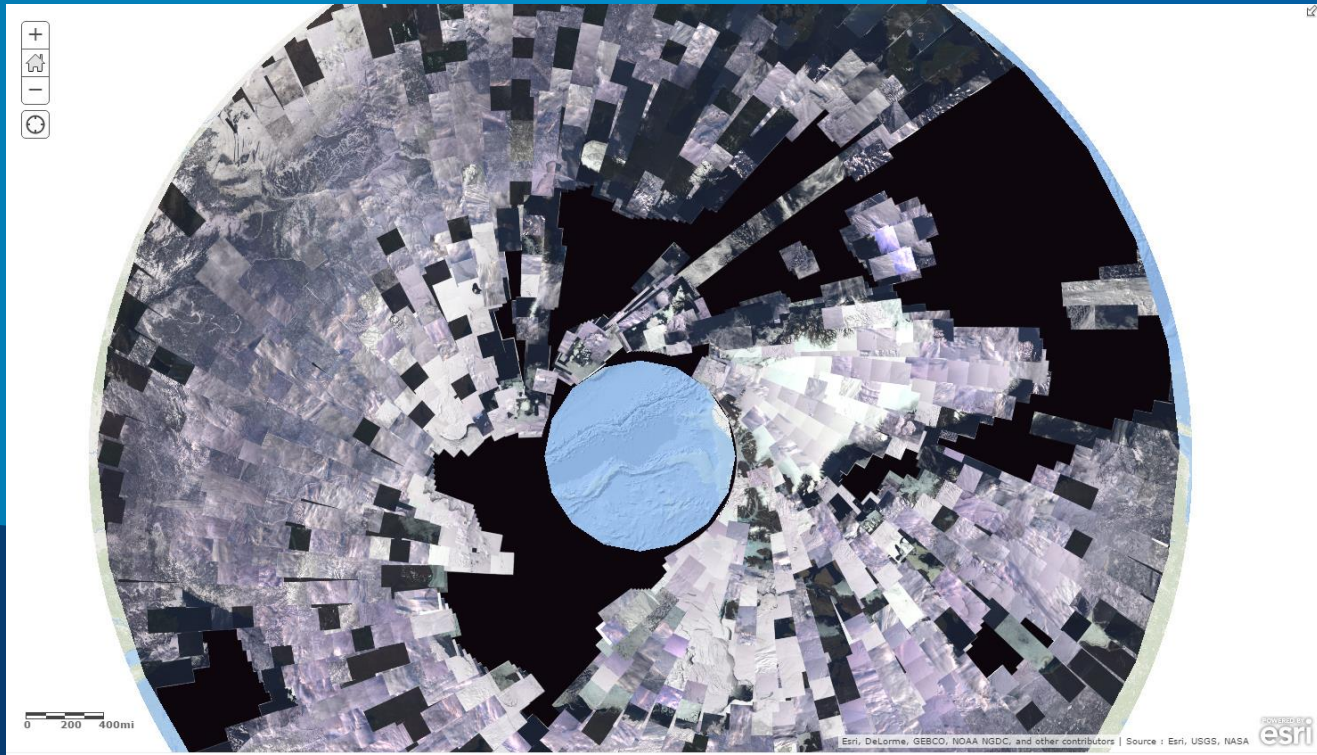
Ocean Base with Topobathy



Massive Imagery Collections

Basemaps, Multi-spectral, Event, Space-time

Imagery for New Zealand



World Imagery

Landsat for the Arctic



World Elevation

DEM coverage for the Arctic

Smart 3D City Models Around the World

CityEngine transforms 2D GIS data into smart 3D city models.

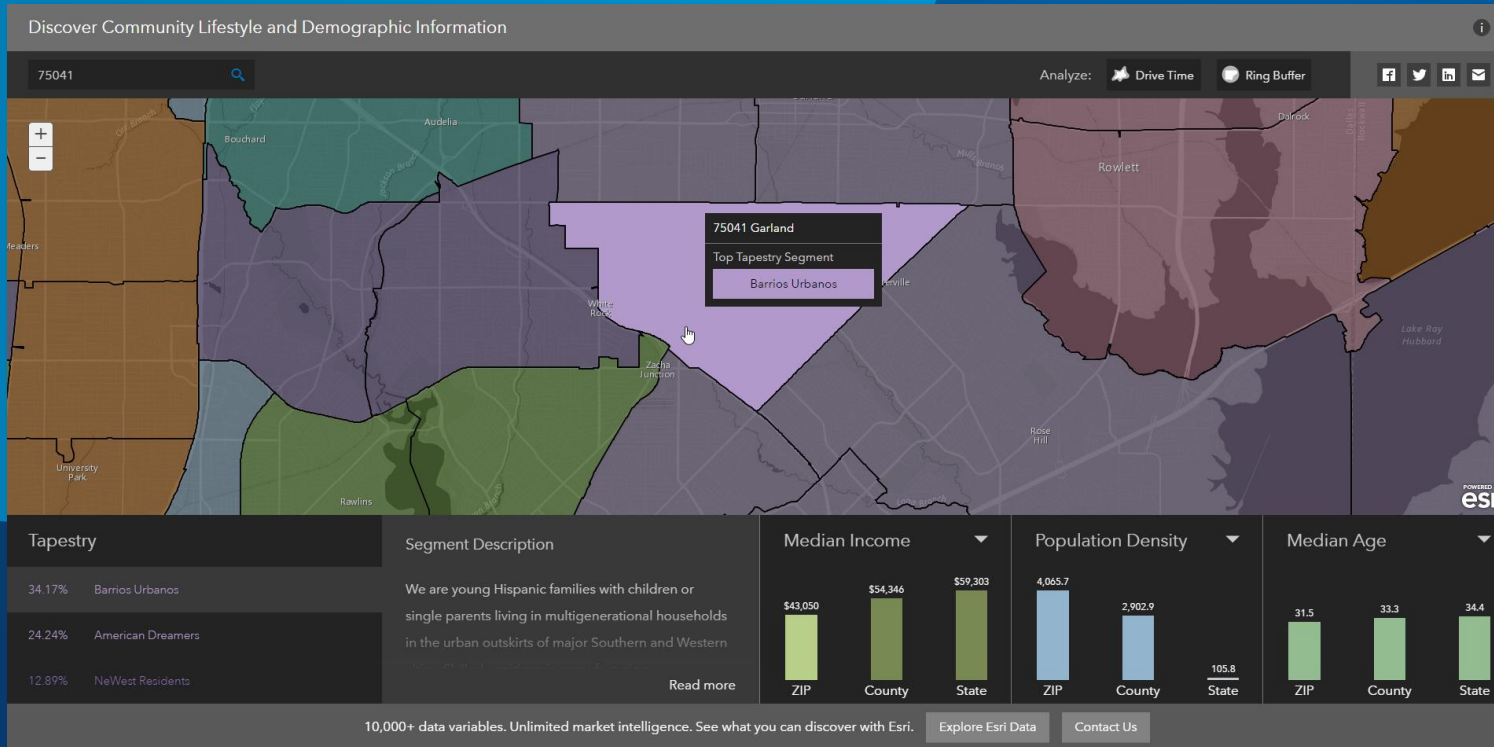
An Esri story map by Matt Artz

Vitoria-Gasteiz, Spain

Reconstruction of Vitoria-Gasteiz: This project uses procedural tools for the virtual reconstruction of ancient sites in Spain. [Read More](#)

Story Maps

Smart 3D Cities Around the World

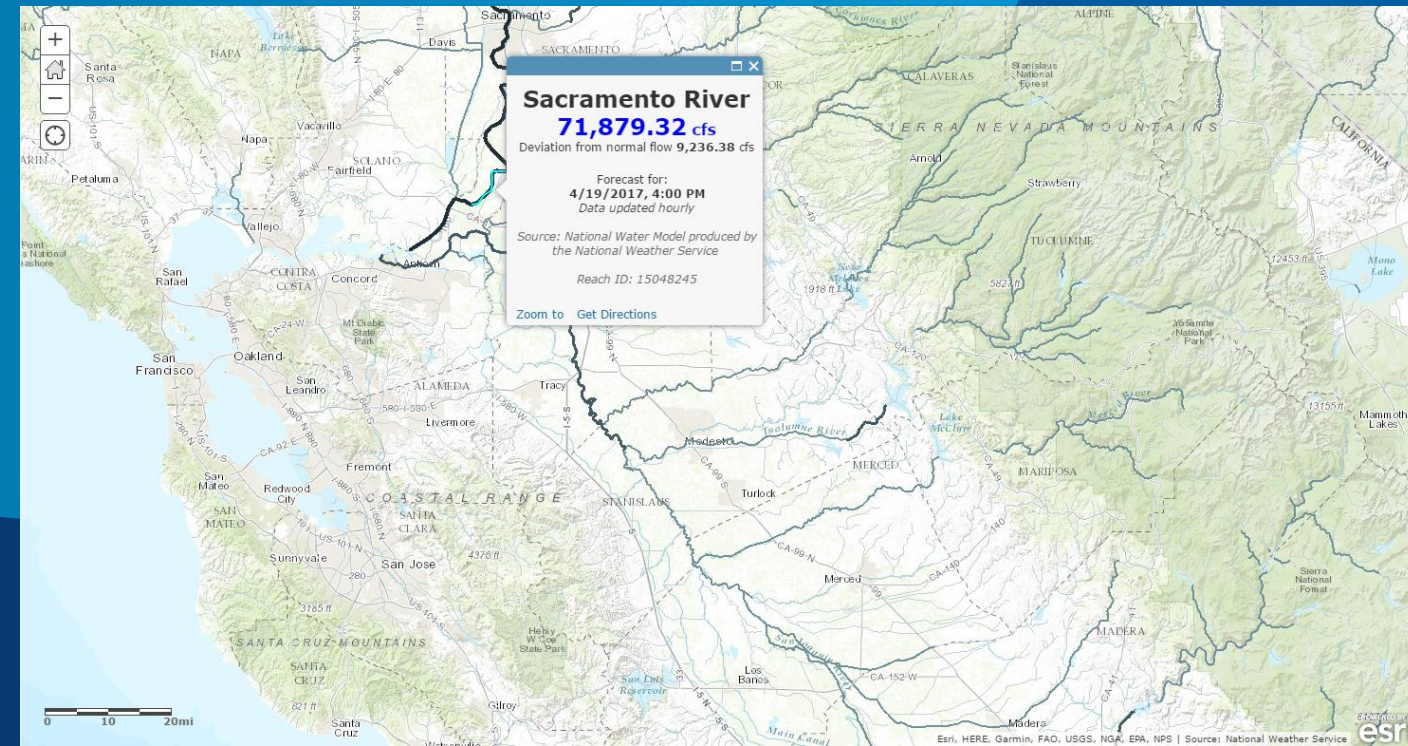


Interesting and Useful Apps & Thousands of Demographic Variables

Tapestry

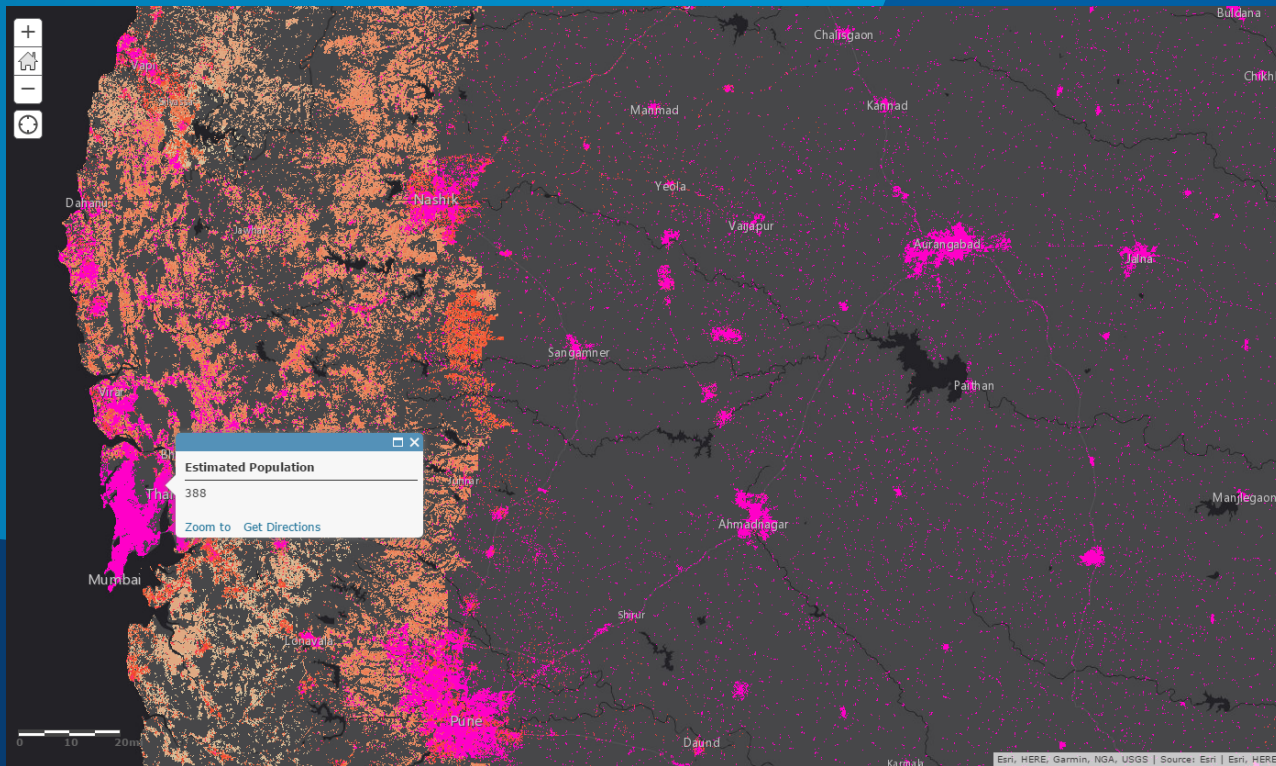
National Water Model for the U.S.

10-Day Water Forecast for 2.7
Million Streams



World Population Estimate

Continuous Grid for the World



In the beginning ...

The GIS for the World...

For your ...

Country

City

Site

Transformation

The background consists of several overlapping geometric shapes in various shades of blue, creating a modern, abstract design. The shapes include a large dark blue triangle on the left, a medium blue trapezoid in the center, and a bright blue triangle on the right.

Time to dive in

Living Atlas

The background consists of several overlapping geometric shapes in various shades of blue, creating a modern, abstract design. The shapes are primarily triangles and quadrilaterals, with some having soft, semi-transparent edges. The colors range from a deep navy blue to a bright, medium blue.

Jim Herries, Esri

Living Atlas

The background consists of several overlapping geometric shapes in various shades of blue, creating a modern, abstract design. The shapes are primarily triangles and quadrilaterals, with some having soft, semi-transparent edges. The colors range from a deep navy blue to a bright, medium blue.

Lisa Berry, Esri

Living Atlas

The background consists of several overlapping geometric shapes in various shades of blue, creating a modern, abstract design. The shapes are primarily triangles and quadrilaterals, with some having soft, semi-transparent edges. The colors range from a deep navy blue to a bright, vibrant blue.

Paul Dodd, Esri

Living Atlas

The background consists of several overlapping geometric shapes in various shades of blue, creating a modern, abstract design. The shapes are primarily triangles and quadrilaterals, with some having soft, semi-transparent edges. The colors range from a deep navy blue to a bright, medium blue.

Keith VanGraafeiland, Esri

Living Atlas

The background consists of several overlapping geometric shapes in various shades of blue, creating a modern, abstract design. The shapes include a large dark blue triangle on the left, a medium blue trapezoid in the center, and a bright blue triangle on the right.

Jennifer Bell, Esri

Living Atlas

The background consists of several overlapping geometric shapes in various shades of blue, creating a modern, abstract design. The shapes are primarily triangles and quadrilaterals, with some having soft, semi-transparent edges. The colors range from a deep navy blue to a bright, medium blue.

Brian Sims, Esri

Living Atlas

Thanks very much

- <http://livingatlas.arcgis.com>
- Not just your own GIS ... *The GIS of the World*
 - Participate
 - Contribute

