

# Training Offerings for Defense and Intelligence Users

Thomas Humber

# Agenda

- **Approach to Training**
- **Defense and Intelligence Training Strategy (Curriculum)**
- **Current Offerings**
  - Instructor-led
  - e-Learning
- **Current Course Development**



# Self-Paced e-Learning Benefit

- **Unlimited Access** for all customers that have an Esri qualifying product with a current maintenance subscription
  - Also available with an ArcGIS for Personal Use subscription.  
<http://www.esri.com/software/arcgis/arcgis-for-personal-use>
- Includes web courses, training seminars, videos, instructor resources, and more
- Created by experts from across Esri, discoverable from one central location  
<https://www.esri.com/training/>



# Resources Available for Defense and Intelligence Users

<https://www.esri.com/training/>



Industries ▾

Products ▾

Support & Services ▾

About ▾

Community ▾

W ▾



## Training

Your location for **lifelong** learning

Main ▾

Catalog ▾

My Learning ▾

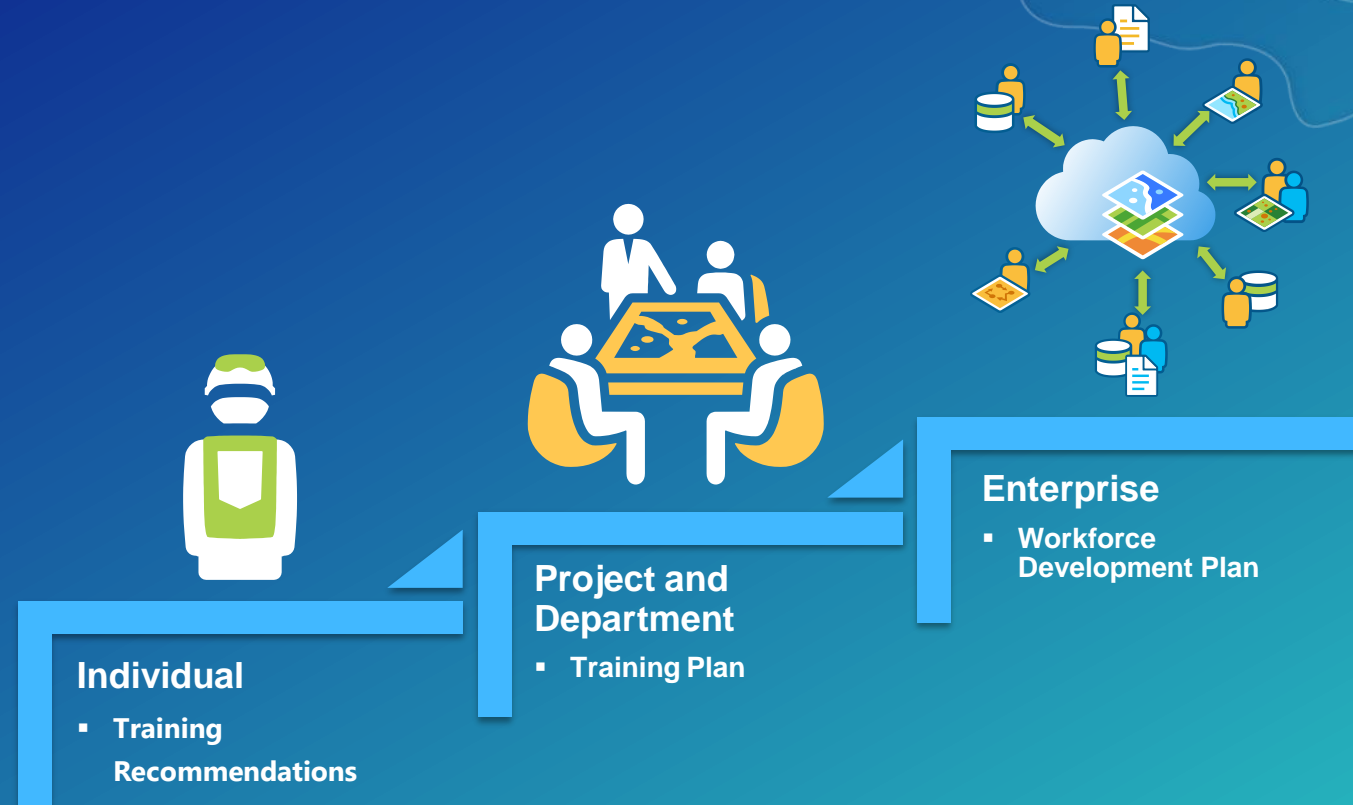
Certification ▾

Help

## Welcome to Esri Training

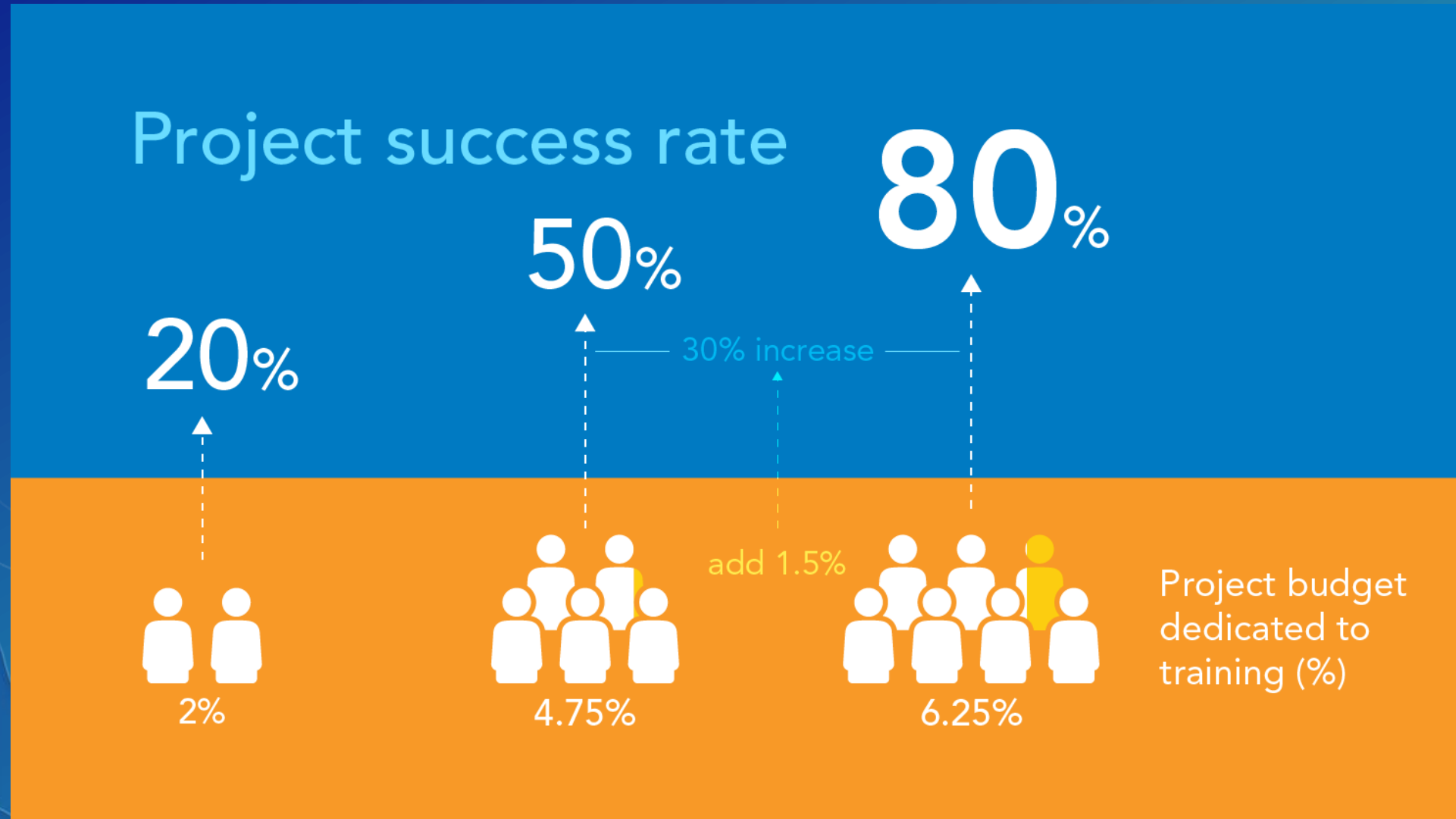
We build and deliver ArcGIS Platform training for hundreds of thousands of users each year. We believe that knowledgeable individuals can accomplish great things in their organizations and communities by applying geography to solve problems. Enjoy your journey, we're here to help.

# Levels of Training



**People + Planning = Performance**

# Investment in Training and Project Success



Source: IDC, [Training's Impact on Projects Survey](#), 2011.

# Defense and Intelligence Training Strategy

- Produce training that resonates and reflects the students' unique operational environments
- Develop training solutions derived from the community's needs
  - Conduct site visits with multiple organizations to identify training requirements
  - Identify industry workflows and best practices to include in our training materials
- Broad-scale curriculum development to service multiple domains and user communities



# Challenges, Operational Needs, and Solutions

## Challenges:

- Limited training time
- Expansion of Geospatial Technology and analytic techniques through mission support
- Potential skill atrophy or knowledge gaps
- Understanding how the platform integrates with other applications

## Operational Needs:

- Continuous/available training capability
- Individual performance support
- Sustainable GIS training platform
- Scalable/adaptable training solutions
- Mission integration

## Solutions:

- Tailored material, operationalizing GIS for the end users
- Expanded content to reach larger operations and echelon support staff
- Integrating blended learning solutions to decrease training impact

# Training Support for the Defense and Intelligence Communities

Formal training

Instructor-  
led

Workshops

Coaching

Job aids

Instructor-  
led  
online

Virtual and E-learning

Web  
courses

Training  
seminars



# Current Instructor-led Offerings

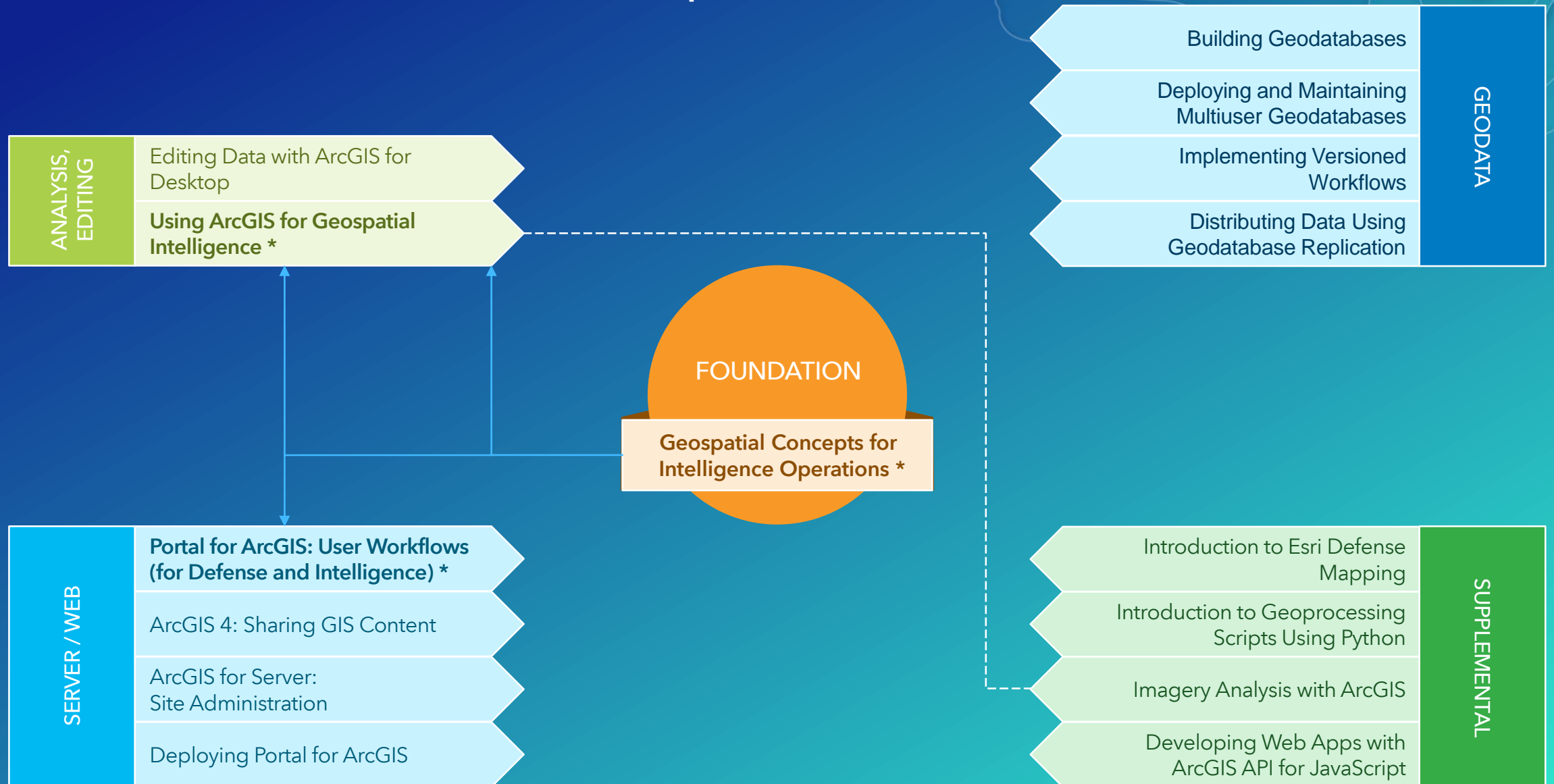
- **Geospatial Concepts for Intelligence Operations**
  - Three-day beginner to intermediate level course offering
  - Teaches foundational concepts
  - Introduces spatial analysis workflows
- **Using ArcGIS for Geospatial Intelligence**
  - Three-day intermediate to advanced level course offering
  - Incorporates Intelligence Preparation of the Battlefield (IPB)
  - Teaches many analysis workflows

# Current Instructor-led Offerings

- **Portal for ArcGIS: User Workflows (Defense and Intelligence)**
  - Two-day course teaches how to leverage Portal for ArcGIS as a user
  - Target audience is analysts of all disciplines
  - Prerequisites:
    - Geospatial Concepts for Intelligence Operations  
*or*
    - Two years experience as an analyst for Defense and/or Intelligence
- **Imagery Analysis Using ArcGIS \***
  - Two-day course teaches how to use ArcGIS for raster processing, change detection, and imagery classification
  - Target audience is analysts of all disciplines
  - Prerequisites:
    - Using ArcGIS for Geospatial Intelligence



# Instructor-led Course Roadmap



# Current Web Offerings (e-Learning)

- **Working with Full Motion Video**

- Introduction to workflows for the Full Motion Video (FMV) Add-in

- **Actionable Intelligence**

- Workflow and introduction to ArcGIS Pro
- 

- **Getting Started with Drone2Map for ArcGIS**

- **Creating 3D Products Using Drone2Map for ArcGIS**

- **Creating 2D Products Using Drone2Map for ArcGIS**

- **Modernize Your Field Workflows Using Collector for ArcGIS (Training Seminar)**

# Current Development

- **ArcGIS Pro Workflows for Defense (Instructor-led)**
- **Analysis using Full Motion Video (Web)**



esri

THE  
SCIENCE  
OF  
WHERE