

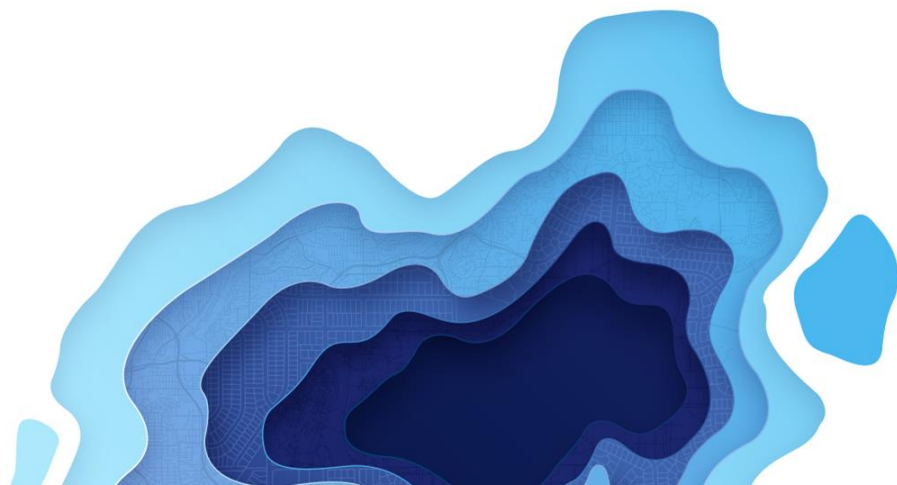


Putting New Technology to Work for You

David Totman, Industry Manager – Global Water Practice

Christa Campbell, Industry Specialist – Global Water Practice

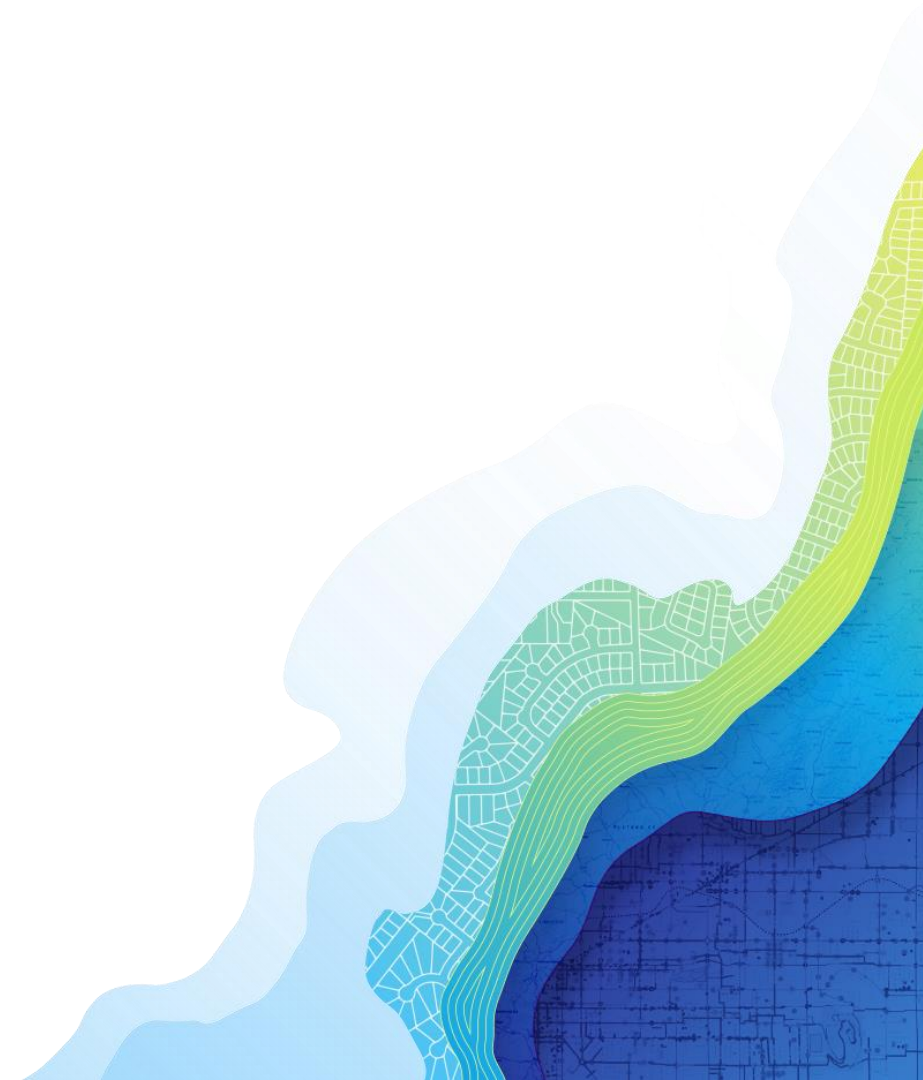
Andrew Hargreaves, Solutions Engineer – Global Water Practice



Putting New Technology to Work for You

aka, David wants a digital twin...

- **David Totman**, General Manager of Mercator Water
- **Christa Campbell**, Geographic Information Officer
- **Andrew Hargreaves**, Strategic Business Analyst





MERCATOR WATER

380 New York Street
Redlands, CA 92373
(909) 793-2853

Utility Board Meeting

Tuesday, October 10, 2017

09:00 AM

Esri Auditorium

AGENDA ITEMS:

1. **7% Water Rate Increase**

My challenges...

- Failing infrastructure.
- Tap fees have been down ever since the housing crisis, our rates barely cover our operating expenses let alone enough funding for capital improvement projects.
- At risk water supply.
- Replacing a retiring workforce.
- We already have disinfection byproducts due to stagnant water, and now we may be getting new regulations on pharmaceuticals and personal care products.
- Energy costs for pumping are going up.
- We have hackers and cyber-security attacks.
- Lack of general public appreciation for the value of water, no line of sight from the watershed to the faucet.



ArcGIS

An Integrated
Web GIS Platform

Providing mapping, analysis, data
management, and collaboration



The Power of Geography

ArcGIS Connects People, Processes, and Data

Improving Efficiency,
Collaboration and
Communication

*System of
Engagement*

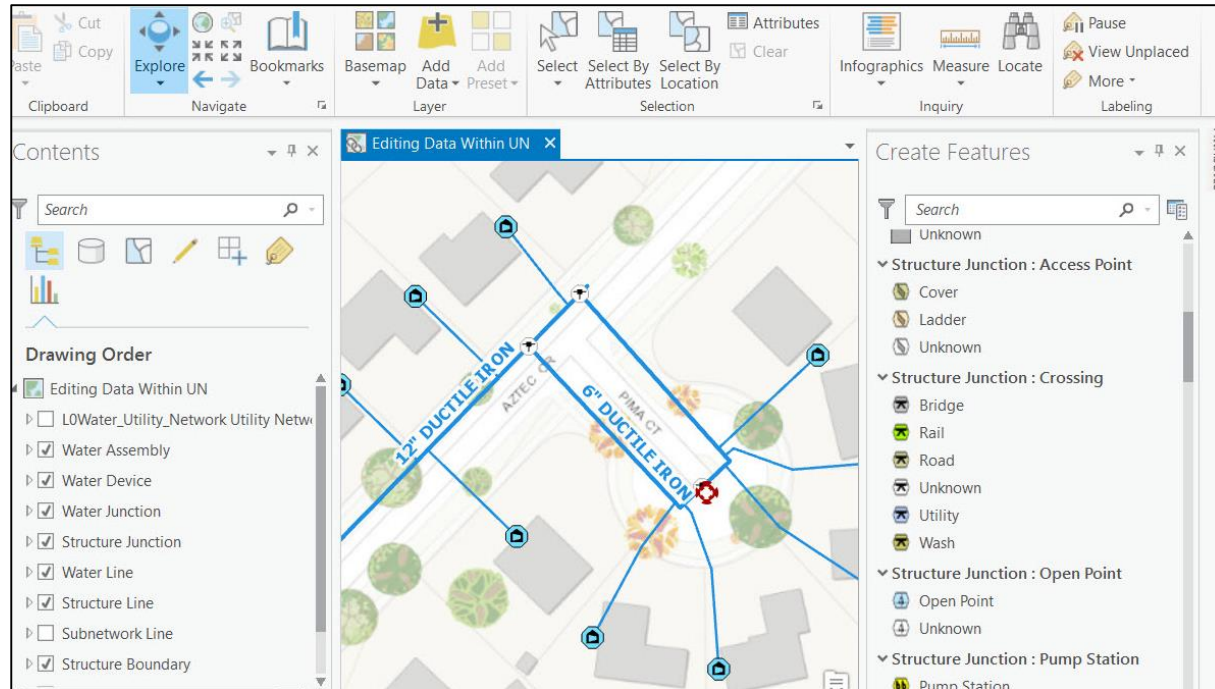
*System of
Record*



Supports Multiple
Types of Systems

*System of
Insight*

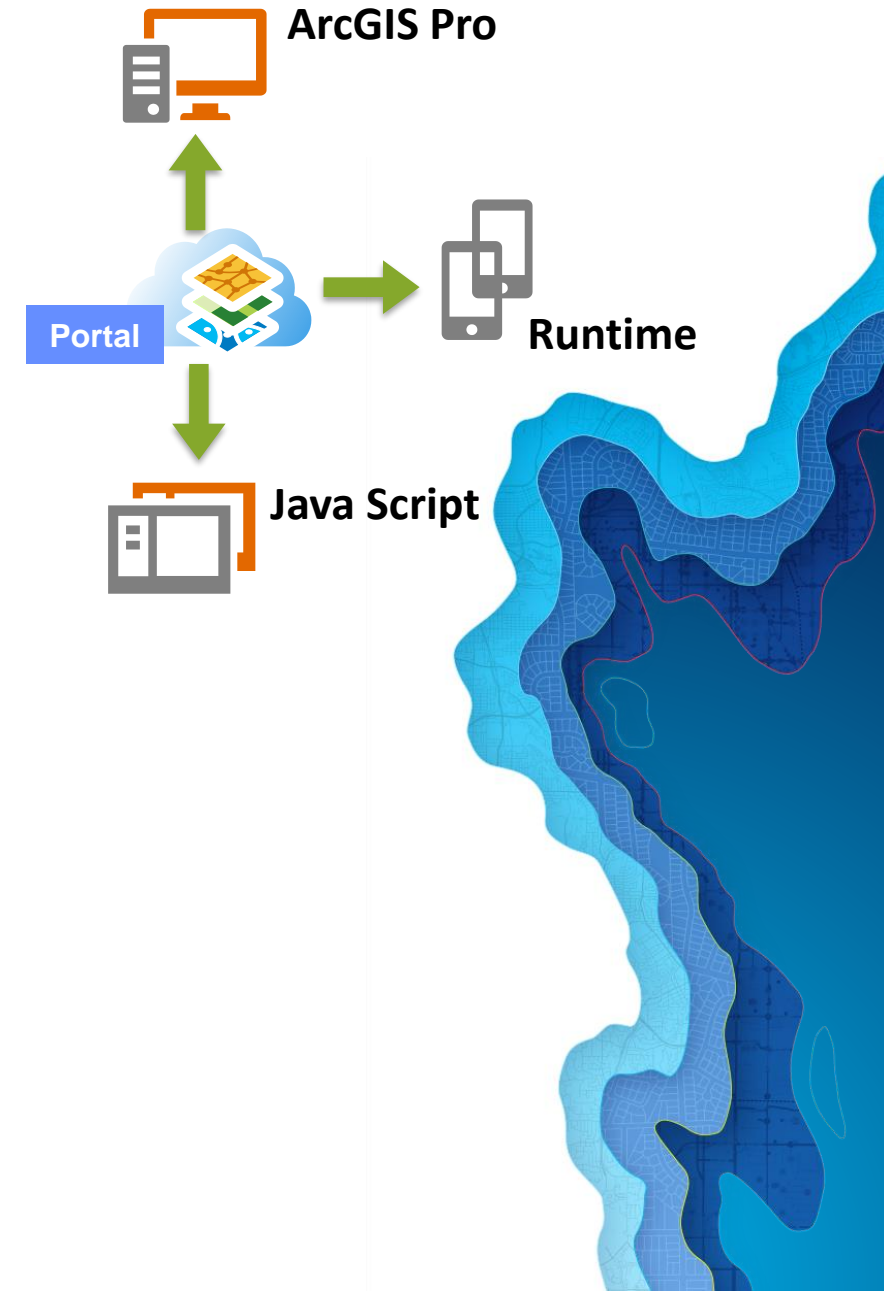
ArcGIS enables **every** employee and contractor to easily discover, use, make, and share maps from any device, anywhere, anytime.



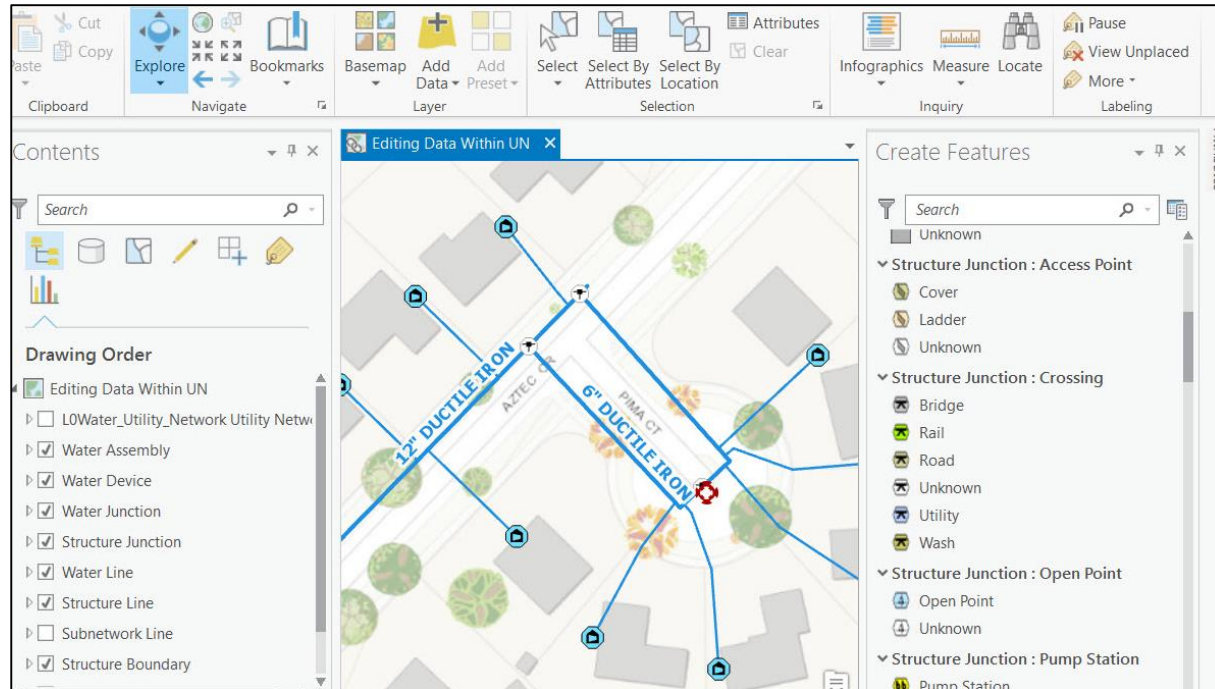
Introducing The Utility Network

The Utility Network

- Esri's new method to model Network Data
- Services based architecture provides the ability to **model, edit,** and **analyze** complex networks across the *entire* Esri platform
- Rules enforce modeling concepts to better support *true* representations of assets in greater detail allowing for greater analysis
- Easy exchange of network information with other mission critical systems like Hydraulic Modelling
- Simplified data models provides increased performance and a highly responsive editing and analysis environment

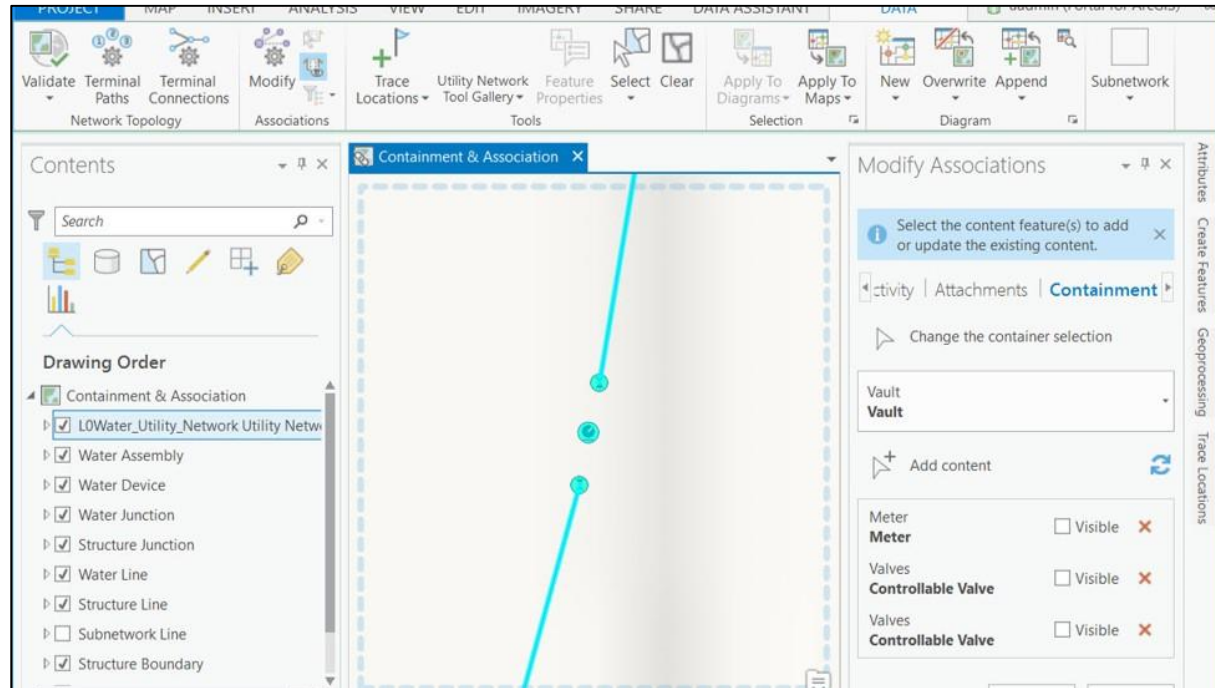


System of Record:



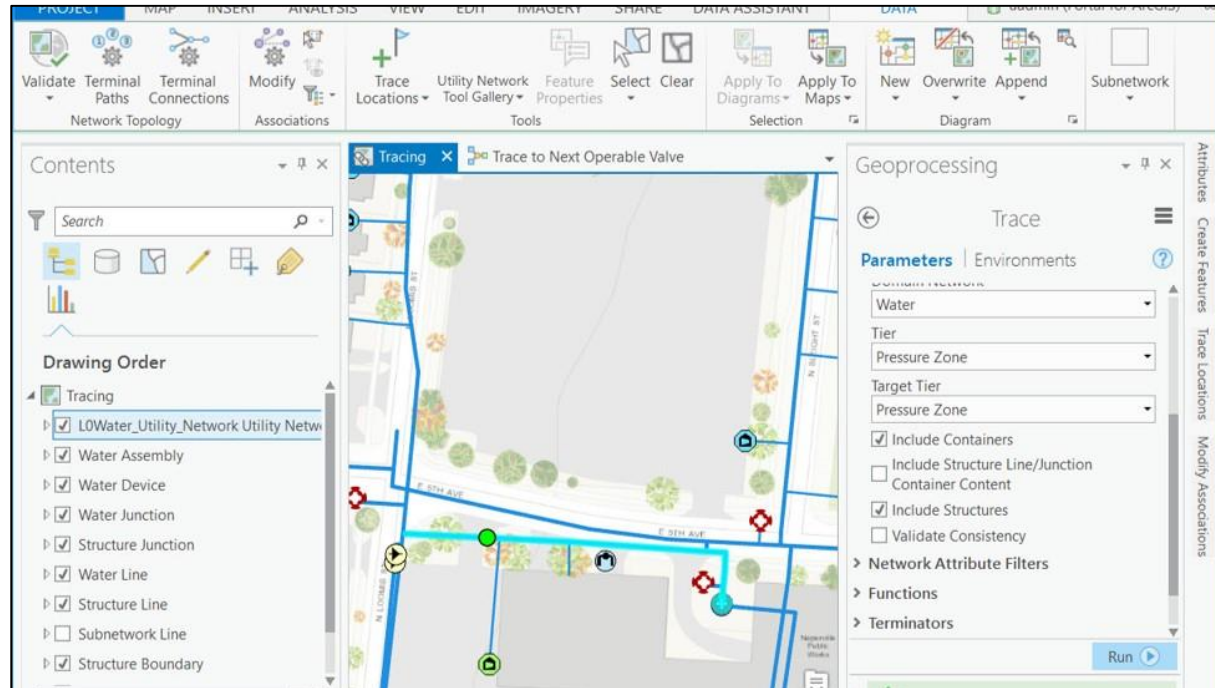
Editing the Utility Network

System of Record:



Containment & Association

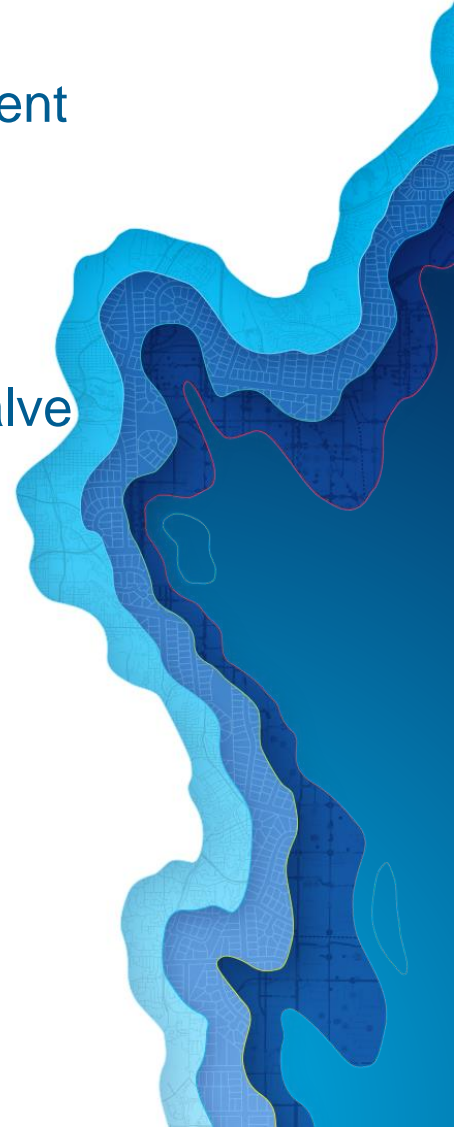
System of Insight:



Tracing the Utility Network

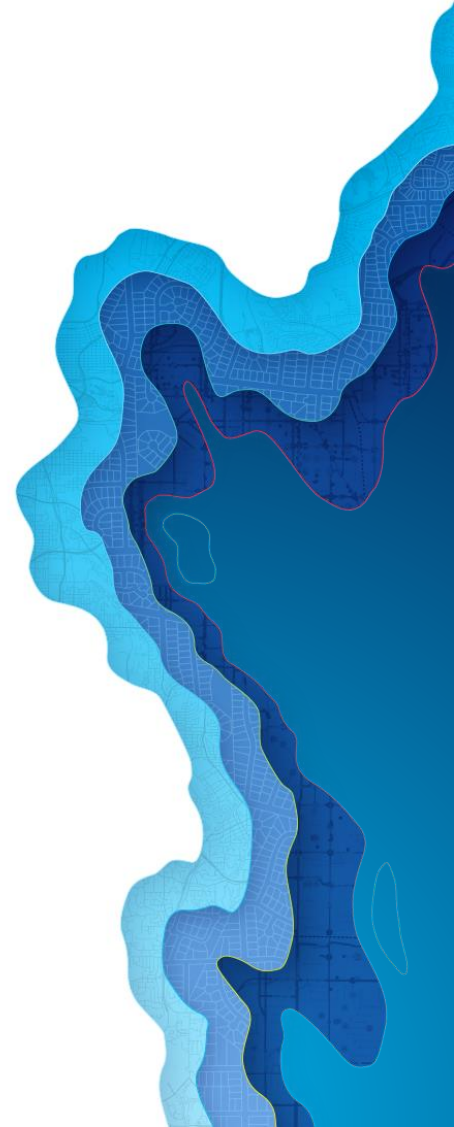
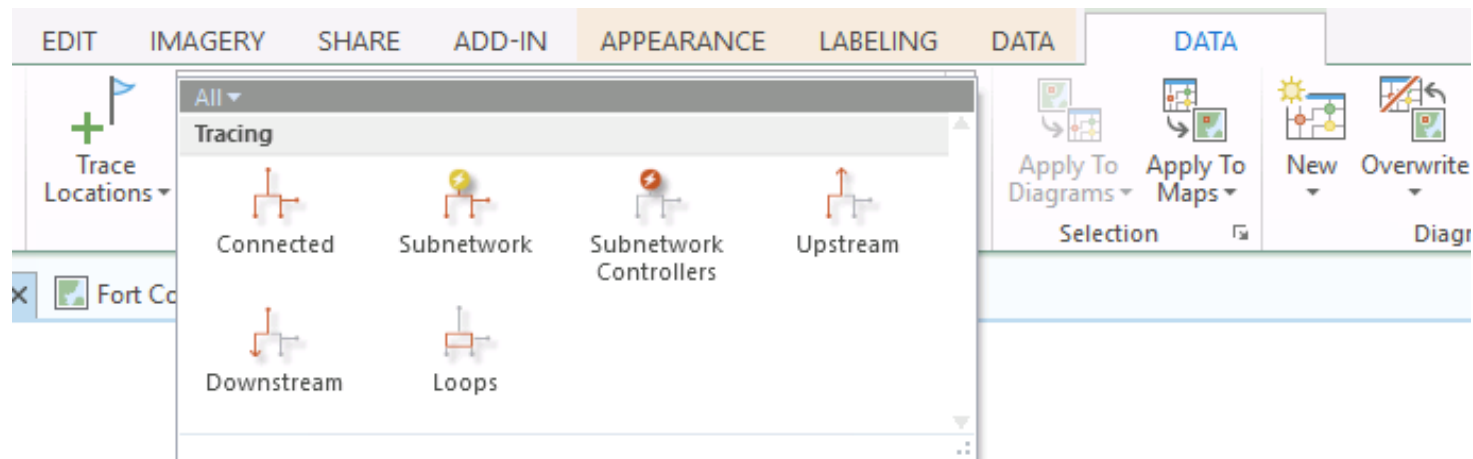
Tracing the utility network

- Tracing uses network data to answers questions and solves problems about the current state of the network:
 - Emergencies: What valves need to be closed to isolate flow to this location?
 - Future design: Can the existing equipment handle more capacity at this point?
 - Workflows: Crews need different answers depending upon Hydrant Flushing vs Valve Exercising?



Tracing the utility network

- Core Trace Types:
 - Connected
 - Subnetwork
 - Subnetwork Controllers
 - Upstream
 - Downstream
 - Loops



Tracing the utility network

Geoprocessing

Trace

Parameters | Environments

Input Utility Network
Naperville Utility Network

Starting Points
UN_Temp_Starting_Points

Barriers
UN_Temp_Barriers

Trace Type
SUBNETWORK_CONTROLLERS

Domain Network
ElectricDistribution

Tier
Medium Voltage

☐ Include Containers
☐ Include Structure Line/Junction Container Content
☐ Include Structures
☐ Feature Status Override
☐ Validate Consistency

> Network Attribute Filters

> Functions

Functions (+) (-)

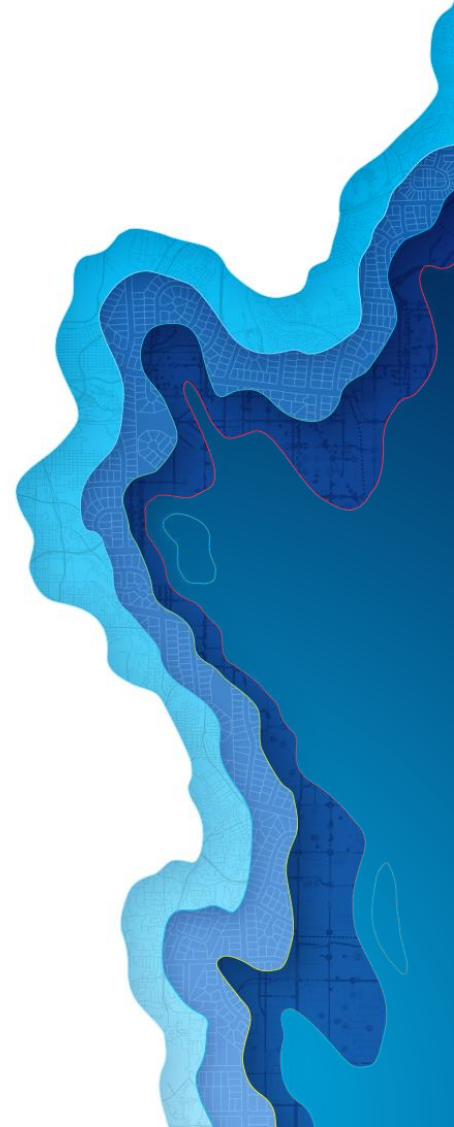
Function
Attribute
Filter Attribute
Filter Operator
Filter Value

> Terminators

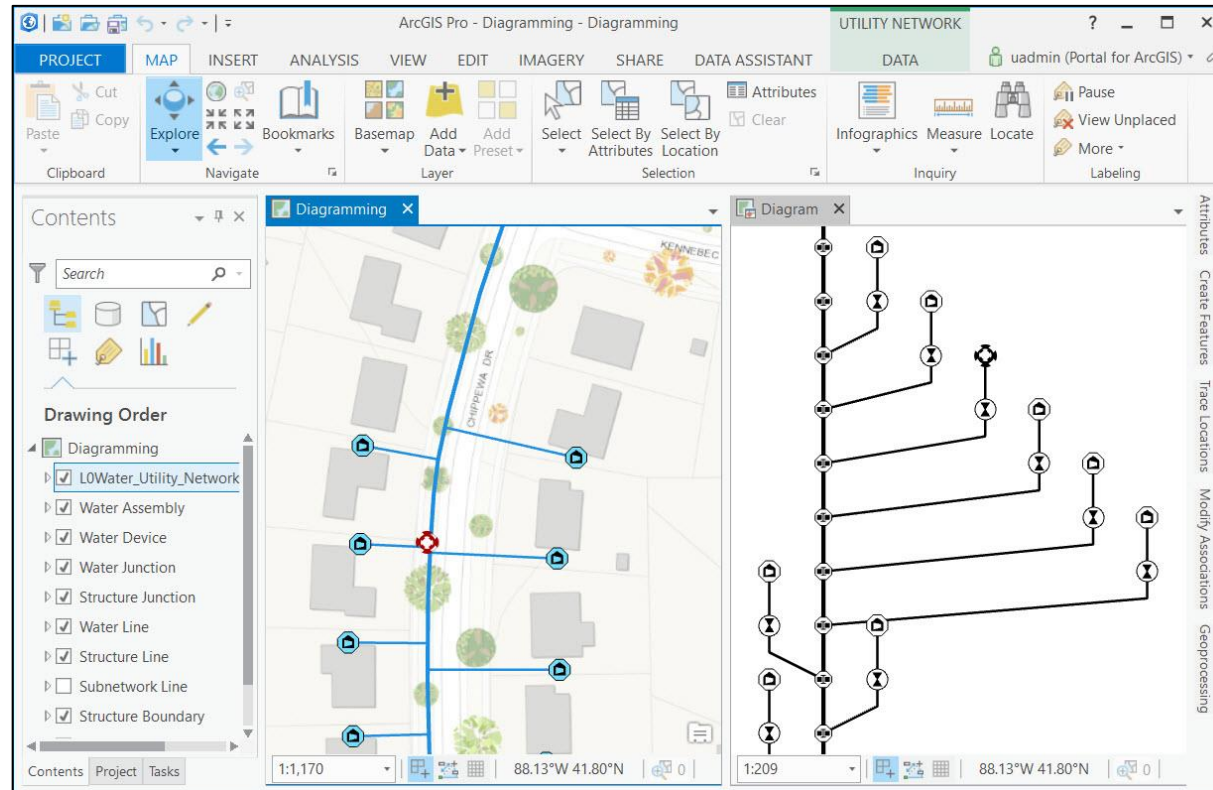
> Output Filters

Run

- *Could* have taken a more traditional approach, eg:
 - Provide workflow specific utility traces in the first release
 - Slowly add to that list over time
 - Requires customers/partners to write their own for unique circumstances



System of Engagement:



Network Diagrams



esri

**THE
SCIENCE
OF
WHERE**