

5 Ways Policymakers Use GIS

Lauren Lipovic, Esri

Bonnie Stayer, Esri

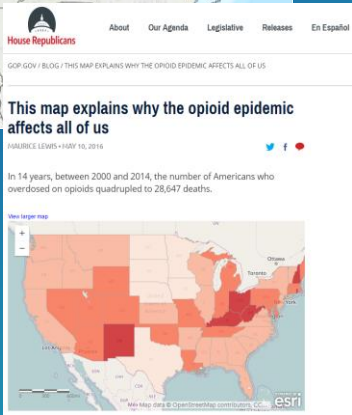
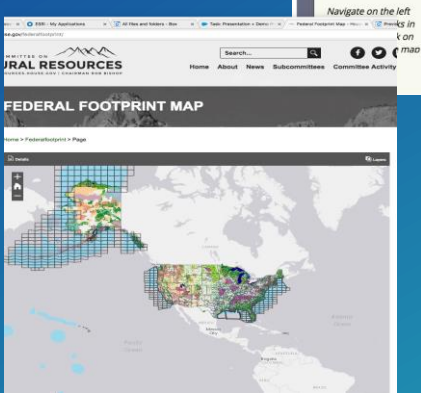
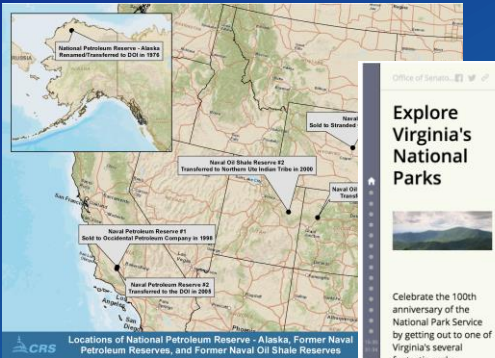
Bill Farnsworth, State of Idaho

Hannah Fischer, Congressional Research Service

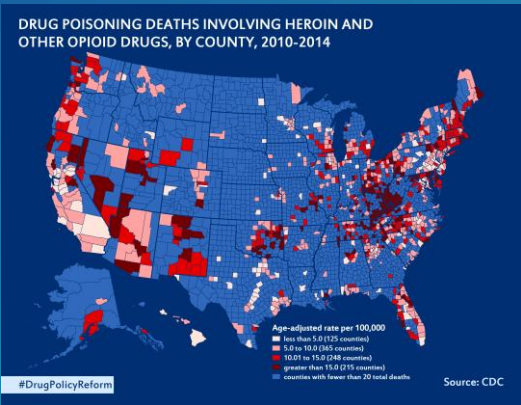
Jim Uzel, Congressional Research Service

How U.S. Policymakers use GIS Today...

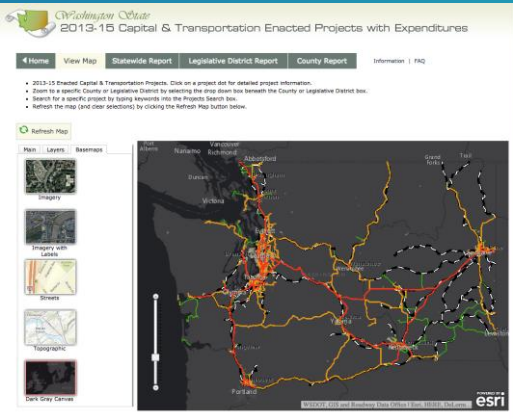
The U.S. Congress



The White House



State Governments



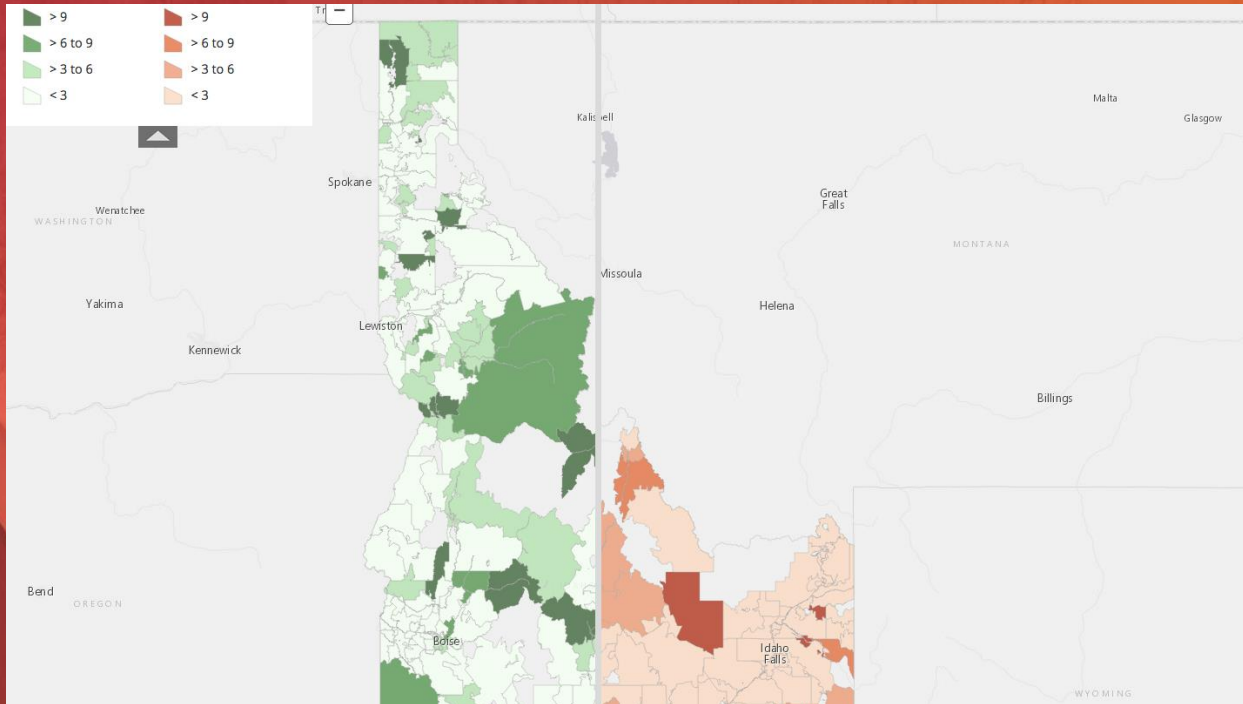
GIS Enables Policymakers to:

1. Gauge Constituent Sentiment
2. Collaborate Among Peers
3. Investigate Policy Issues for Effective Policy Making
4. Communicate with Constituents, Press, the Public
5. Brief Decision-Makers



Mapping Constituent Correspondence

Bonnie Stayer



ArcGIS

An Integrated
Web GIS Platform

Providing mapping, analysis, data
management, and collaboration



Please Take Our Survey on the Esri Events App!

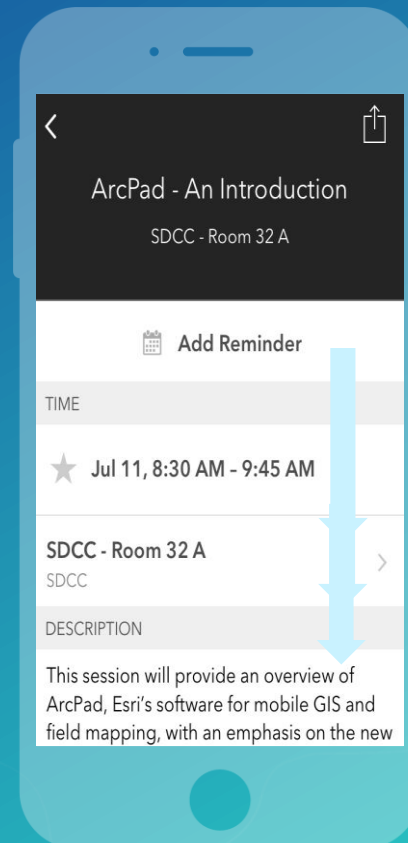
Download the Esri Events app and find your event



Select the session you attended



Scroll down to find the survey



Complete Answers and Select "Submit"



Summary

- **As you saw today, the ArcGIS Platform is transforming how policymakers make decisions.**
- **Starting with how policymakers investigate issues;**
- **Measure constituent sentiment;**
- **Communicate among peers;**
- **Communicate to the public; and,**
- **Execute initiatives.**

Thank you!

policy@esri.com

@esrifederalgovt | #esripolicy



esri

THE
SCIENCE
OF
WHERE