


Living Atlas for Green Infrastructure

Jim Herries  @jherries

Ryan Perkl

Rob Stauder

Agenda

- The Living Atlas includes a collection of Green Infrastructure resources
- Introduce some Green Infrastructure Concepts
- Introduce 6 Step GIC GI Planning Process
 - *Set Goals → Review Data → Map GI Assets → Assess Risk → Determine Opportunities → Implement*
- Introduce Esri's Green Infrastructure Initiative
- Four Cornerstones
- Website & Demonstrations of Apps and Geoplanner

Maps and Layers from Esri and Thousands of Contributors

Maps and Layers from Esri and Thousands of Contributors



The Collection is **growing and changing** on a daily basis...

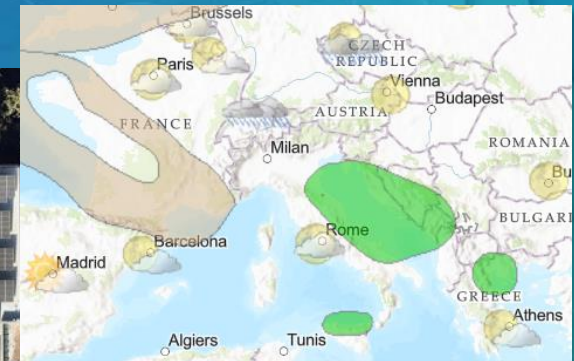
...with Curated Content on Many Topics

Content is Published by Esri, Users, and Partners

Built by the ArcGIS Community and Curated by Esri

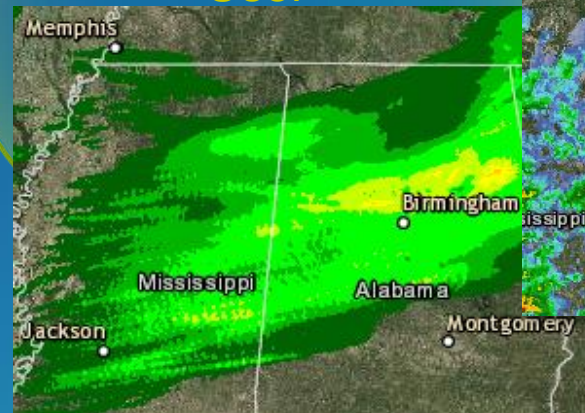
Esri
Content
COMMUNITY

7cm **nearmap** imagery



AccuWeather Sever Weather

NOAA Precip. Estimates



Weather Radar

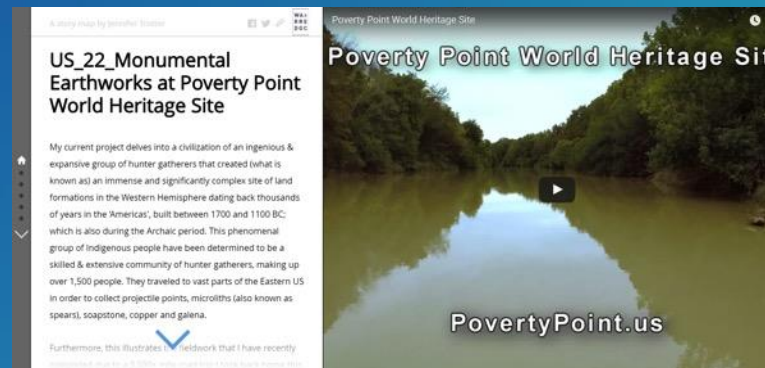
Real-Time Observations



User Contributor Comment

“Lastly, it’s truly a pleasure to have my work represented on a platform of this magnitude. I can’t begin to express my gratitude, truly.”

Jennifer Trotter, Journalist & Blogger



Accessing the Living Atlas through ArcGIS

Multiple ways to Experience the Living Atlas through ArcGIS Apps

- **ArcGIS Online & ArcGIS Enterprise (Portal) 10.5!**

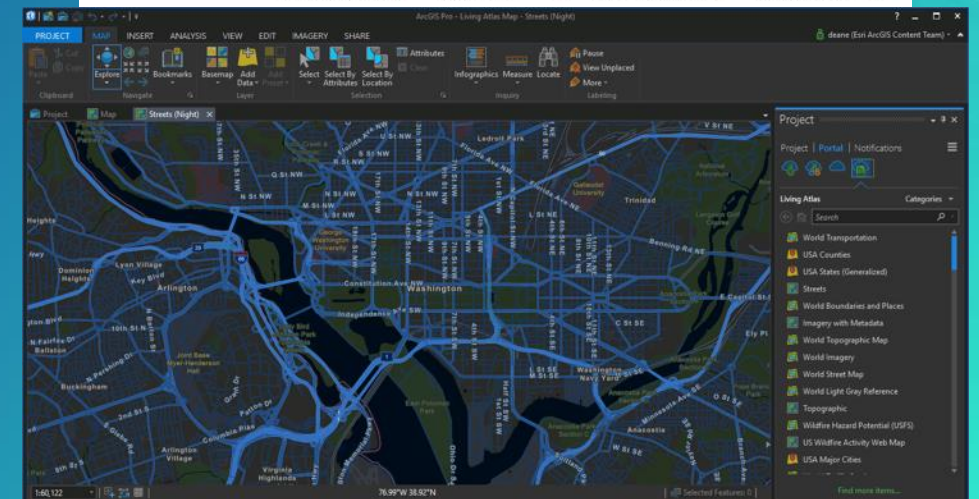
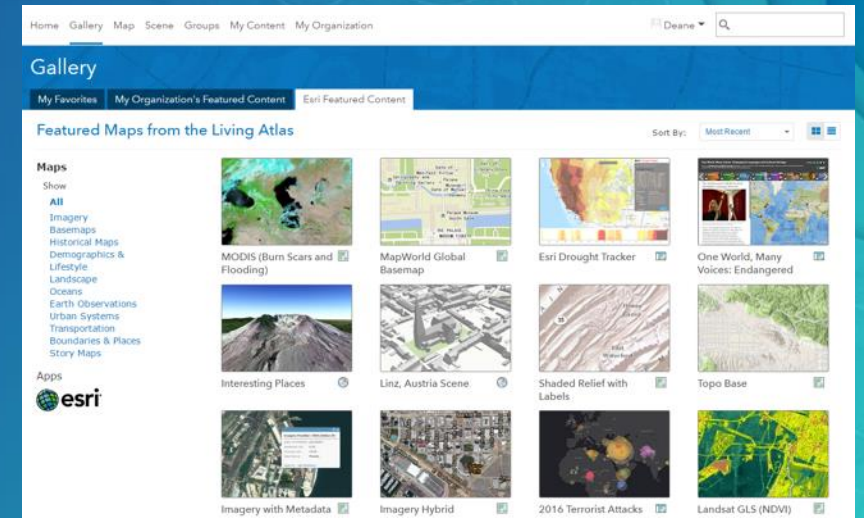
- Gallery: Esri Featured Content
- Add Data: Browse Living Atlas Layers
- Analysis: Choose Living Atlas Layers

- **Living Atlas of the World Website**

- livingatlas.arcgis.com
- Browse and preview maps, layers, and tools
- Contribute maps, layers, and data

- **ArcGIS Desktop**

- ArcGIS Pro 1.2+
- Open Maps, Add Layers, Perform Analysis



Esri Content Portfolio within Living Atlas

Esri Content Portfolio within Living Atlas



How to Participate in the Living Atlas Community

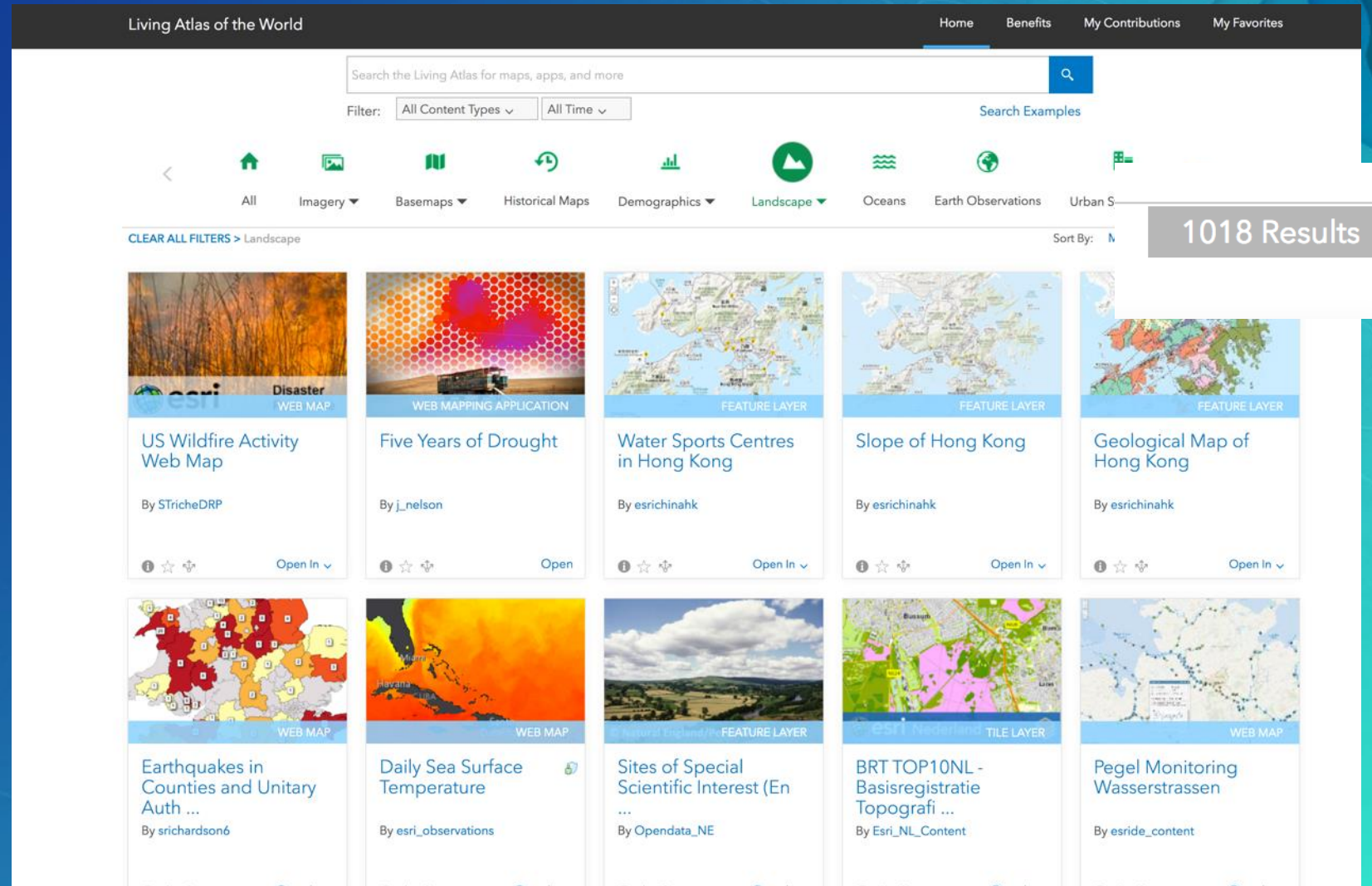
- Living Atlas Community includes:
 - **Contributors**: who **publish content** that is included in the Living Atlas
 - **Curators**: who **review, approve, and organize content** that is included in the Living Atlas
- Living Atlas Contributors can participate by:
 - a) Publishing content directly through ArcGIS Online
 - b) Publishing content indirectly through Community Maps
- Go to **livingatlas.arcgis.com** to Get Started!

What's available in the
Living Atlas for green
infrastructure?



The Living Atlas Contains 1000+ Landscape Items

- Apps
- Story Maps
- Web Maps
- Layers
- Many green infrastructure items within



The Green Infrastructure Collection

www.esri.com/greeninfrastructure

Living Atlas of the World THE GREEN INFRASTRUCTURE COLLECTION

Explore green infrastructure related maps and apps in the Living Atlas, made readily available by your peers for you to leverage. Find imagery, demographic, and other relevant data that you can use to build your green infrastructure strategy.



SAMPLE MAPS



ECOLOGICAL ASSETS



CULTURAL ASSETS



SCENIC ASSETS



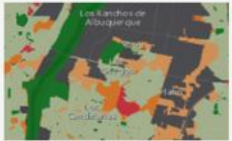
HAZARD ZONES



CONSERVATION



BOUNDARIES



ParkScore® Index 2016



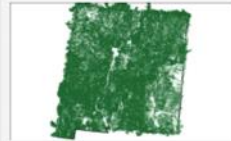
Green Infrastructure High Mo...



National Map of Green Infr...



Sample Green Infrastructure...



New Mexico Green Infrastruc...



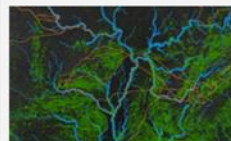
Prime Agriculture



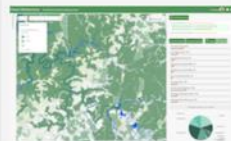
Intact Core Habitat Areas



Intact Habitat Near Me



Building a National Intact Ha...



Prioritize Your Intact Landsc...



What is green infrastructure?

...and why you should care...



Enabling Apps For Green Infrastructure Planning

— Ryan Perkl

Green Infrastructure (GI)

is a strategically planned and managed network of open spaces, natural lands, wildlife habitats, parks, and other assets that provide communities with the vital services that enrich and sustain their quality of life.

Enabling Apps For Green Infrastructure Planning

• _____ Ryan Perkl

Green Infrastructure Planning

seeks to situate land development and land conservation together in a way that leverages natural environmental patterns. In so doing, green infrastructure promotes both conservation and smart growth.

Enabling Apps For Green Infrastructure Planning

— Ryan Perkl



Green Infrastructure Planning reorders the traditional land development process by identifying, prioritizing, and protecting the landscapes most valuable assets first, as opposed to after development has already occurred.

Even in already developed areas, green infrastructure plans can illustrate resources that still need protection and highlight areas that would benefit from rehabilitation.

In this way, green infrastructure becomes a viable solution to many of our local and global challenges.

The Green Infrastructure Center outlines a six-step process for generating green infrastructure plans:

1

Set Goals

2

Review Data

3

Map GI Assets

4

Assess Risk

5

Develop
Opportunities

6

Implementation



Esri's Green Infrastructure Initiative

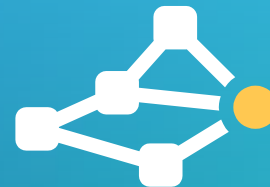
New Core Data



Source Data



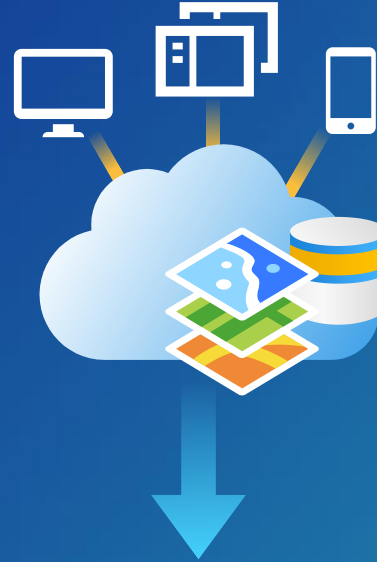
Models



Apps



ArcGIS



Newly generated national inventory of intact landscape cores
Soon to come newly generated national connectivity assessment

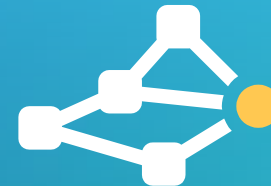
New Core Data



Source Data



Models



Apps





A one stop location for downloading the most commonly used
and authoritative data for GI planning

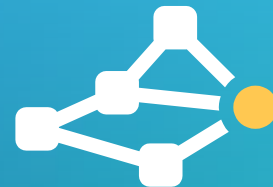
New Core Data



Source Data



Models



Apps





Freely available and configurable ArcGIS Desktop and Pro models
for generating your organizations GI assets using your data

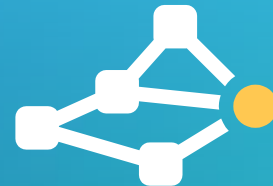
New Core Data



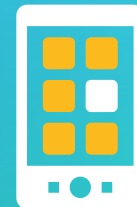
Source Data



Models



Apps





Apps that are both freely available and others that function with ArcGIS online for engaging in GI asset identification, prioritization, and customizable analysis

New Core Data



Source Data



Models



Apps



Live Demo



Esri GI
Web Resources



Select Your
Landscape Cores



Prioritize Your
Landscape Cores



GI Planning with
GeoPlanner

GI Resources shown

Esri Green Infrastructure Initiative Web Page: <http://www.esri.com/about-esri/greeninfrastructure>

GI Data:

[Green Infrastructure Data Gallery](#)

Intact Habitat Cores ([map image layer](#))

Intact Habitat Cores ([tile layer](#))

Intact Habitat Cores ([web map](#))

Habitat Fragments ([image layer](#))

Habitat Cost Surface ([image layer](#))

Habitat Connectors ([map image layer](#))

Habitat Connectors ([tile layer](#))

Intact Habitat Cores by Connectivity Importance ([image layer](#))

GI Apps:

[Green Infrastructure Apps Gallery](#)

[Intact Habitat Near Me App](#)

[Landcover Change App](#)

[Select Your Intact Habitat Cores](#)

[Prioritize Your Intact Habitat Cores](#)

[Investigate Core Weighting](#)

[Conduct Landscape Analysis](#)

Contact: Ryan Perkl, rperkl@esri.com

Learn more about GeoPlanner

- Trial - <http://doc.arcgis.com/en/geoplanner/trial/>
- Purchase – <http://marketplace.arcgis.com>
- Get started - <http://doc.arcgis.com/en/geoplanner/get-started/set-up.htm>
- YouTube - https://www.youtube.com/channel/UCc7DP2_GOqGGqCVXXfMNCNA
- Product page - <http://www.esri.com/geoplanner>
- Geonet - <https://geonet.esri.com/community/gis/applications/geoplanner-for-arcgis>
- Blog - <https://blogs.esri.com/esri/arcgis/2017/03/03/76191/>
- Courses - <https://www.esri.com/training/catalog/search/>
- Jump Start: Esri consultants help you get started with your data including providing hosting

Questions!



Esri GI
Web Resources



Select Your
Landscape Cores



Prioritize Your
Landscape Cores



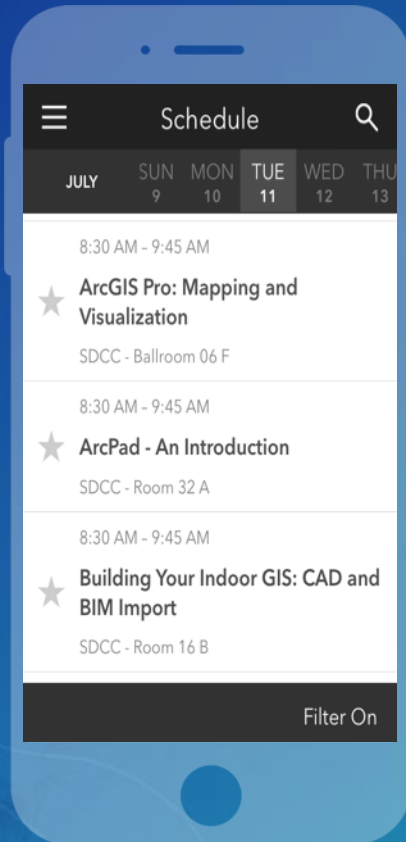
GI Planning with
GeoPlanner

Please Take Our Survey on the Esri Events App!

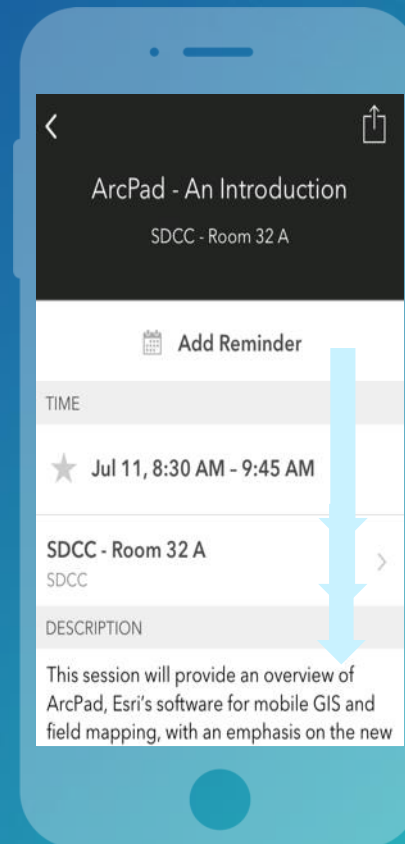
Download the Esri Events app and find your event



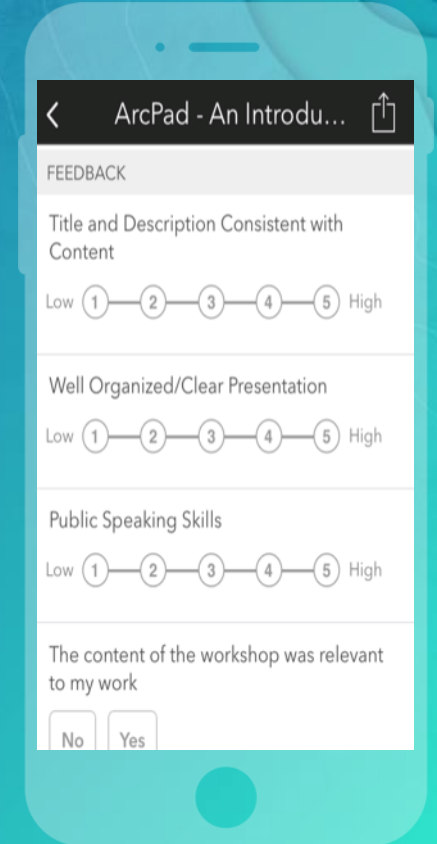
Select the session you attended



Scroll down to find the survey



Complete Answers and Select "Submit"





esri

THE
SCIENCE
OF
WHERE