

Sharing Your Work with the Living Atlas of the World

Seth Sarakaitis – Esri
ssarakaitis@esri.com

Session Topics

- The Living Atlas
- Sharing Maps and Apps
- Sharing Data to the Community Maps Program

An Atlas?

Concept of an atlas

Collection of maps, graphs and stories

geopolitical

world economics

population

natural phenomena – weather – vegetation - geology

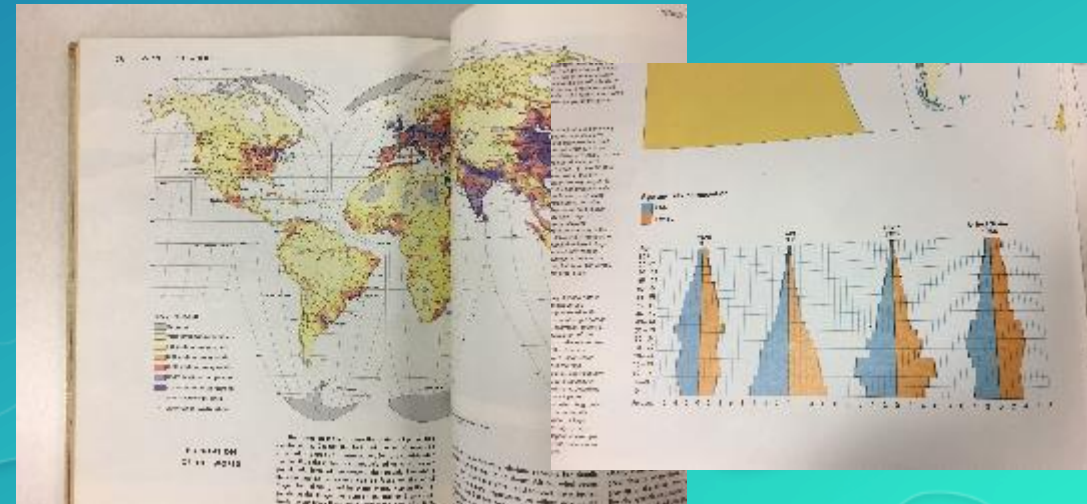
transportation

social

Compiled by subject matter experts (scientists!)

Curated by lead author(s)

Books are a snap-shot in time



ArcGIS includes a Living Atlas of the World

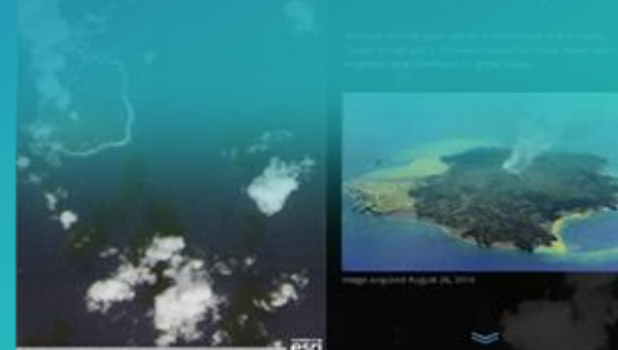
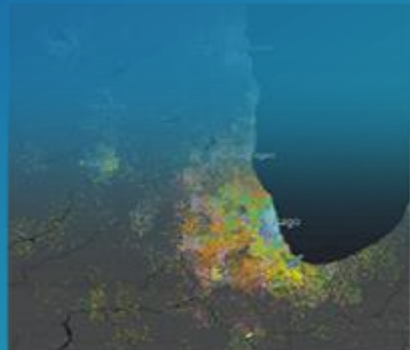
- **Maps and Layers from Esri and Thousands of Contributors**



The Collection is **growing and changing**
on a daily basis...

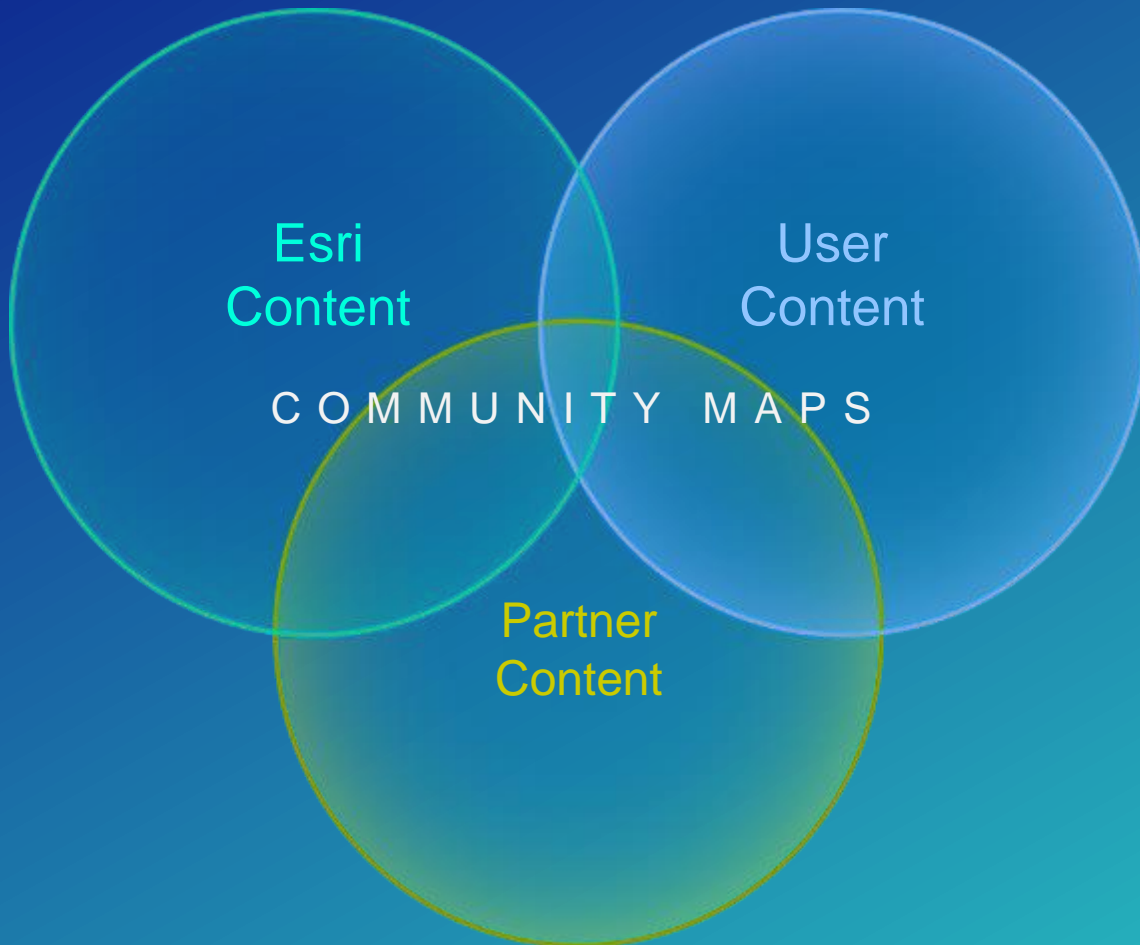
- ... with **Curated** Content on Many Topics

Living Atlas Topics or Themes



Living Atlas Content is Published by Esri, Users, and Partners

- Built by the ArcGIS Community and Curated by Esri



Accessing the Living Atlas through ArcGIS

- **Multiple ways to Experience the Living Atlas through ArcGIS Apps**

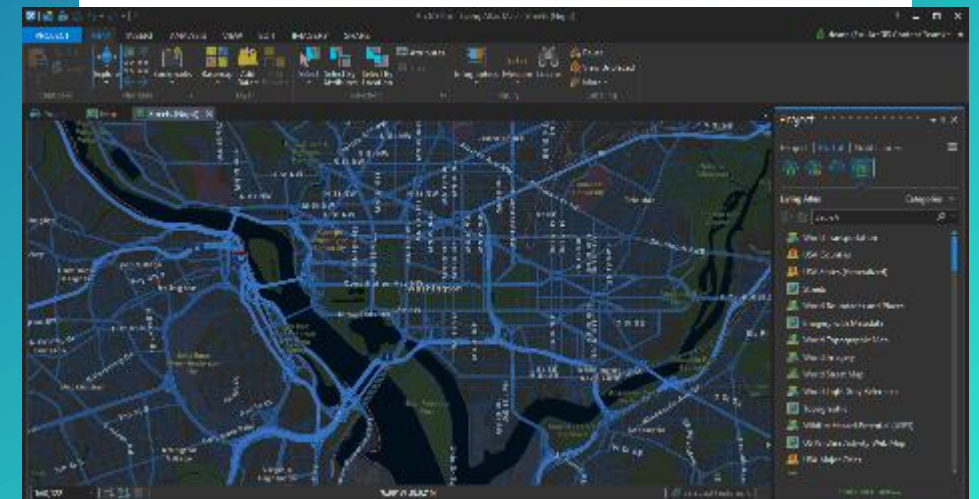
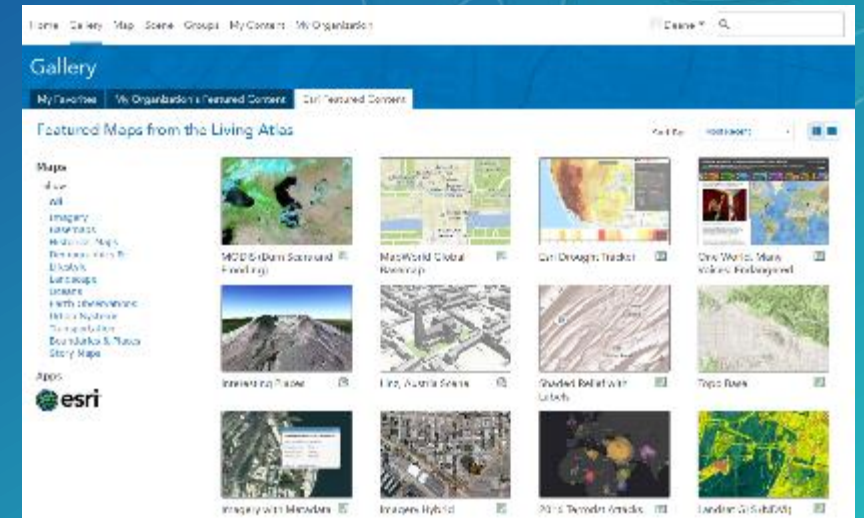
- Living Atlas of the World Website
 - Browse and preview maps, layers, and tools

- ArcGIS Online & ArcGIS Enterprise (Portal) 10.5!

- Gallery: Esri Featured Content
- Add Data: Browse Living Atlas Layers
- Analysis: Choose Living Atlas Layers

- ArcGIS for Desktop

- ArcGIS Pro 1.2+
- Open Maps, Add Layers, Perform Analysis



Home ▾ My Map New Map ▾ Deane

Details Add ▾ Basemap Analysis Save ▾ Share Print Directions Measure Bookmarks Find address or place

Legend

2016 USA Median Household Income

Tract

- \$ 103,600 - 200,100
- \$ 72,900 - 103,600
- \$ 42,200 - 72,900
- \$ 11,600 - 42,200
- \$ 0 - 11,600

Browse Living Atlas Layers

☐ Show Esri Layers Only ☒ Within map area

Demographics & Lifestyle

Income Extremes 2016 USA Crime Index World Population Estimate 2016 USA Population Density

Add layer to map ▾ Add layer to map ▾ Add layer to map ▾ Add layer to map ▾

2016 USA Median Household Income

This map layer shows the median household income in the U.S. in 2016 in a multiscale map by country, state, county, ZIP Code, tract, and block.

Average World Income 2016 USA Tapestry Segmentation 2016-2021 USA Population Growth

Add layer to map ▾ Add layer to map ▾ Add layer to map ▾ Add layer to map ▾

1 2 3 4 5 6 7 8 9 10 11 12 13

Explore Living Atlas

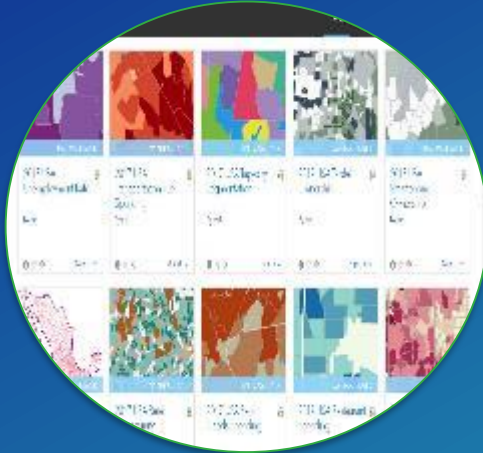
Demo



You're invited to Share



We're all a community – Consumers, Curators, and Contributors



**Share your Best Maps
and Apps**



**Share Data to
Community Maps**

Why? What? Where? & How?

Share Maps, Apps, and Layers

Why?

Showcase your work

Reach a broad audience

Make your items more discoverable

Help build the GIS of the world



Share Maps, Apps, and Layers

ArcGIS Items to Share

Story Maps and Apps

Feature Services & Scenes

Web Maps

Tools



Relevant topic to the Living Atlas Themes or Subtheme

What?



Share Maps, Apps, and Layers

Where?

Contributor App

[Livingatlas.arcgis.com](https://livingatlas.arcgis.com)

My Contributions (requires log in)

My Content

Share Maps, Apps, and Layers

How?

Create Item

Share Publically

Scoring System for Items

Improve your map, App, or layers with:

- Rich thumbnail images
- Well written descriptions and profiles
- Hyperlinks
- Appropriate tags

Suggested Improvements



❗ 4/9 Improve thumbnails

❗ 2/9 Must be public

❗ 0/8 Description is required

❗ 0/7 Profile description is required

❗ 2/10 Improve tags

⚠️ 0/8 Add access and user constraints



Shared Items Living Atlas

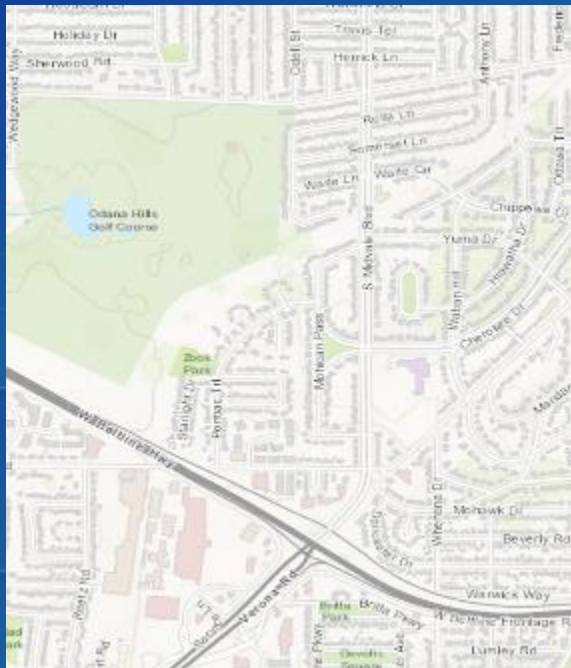
Demo

Share data to Esri's Foundation Layers

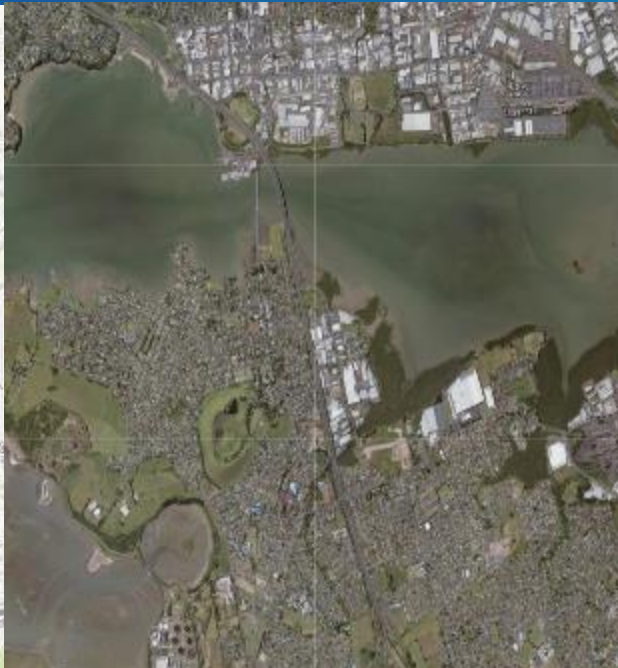
Community Maps Program

Goal: enhance foundation layers with rich, up to date data from the community

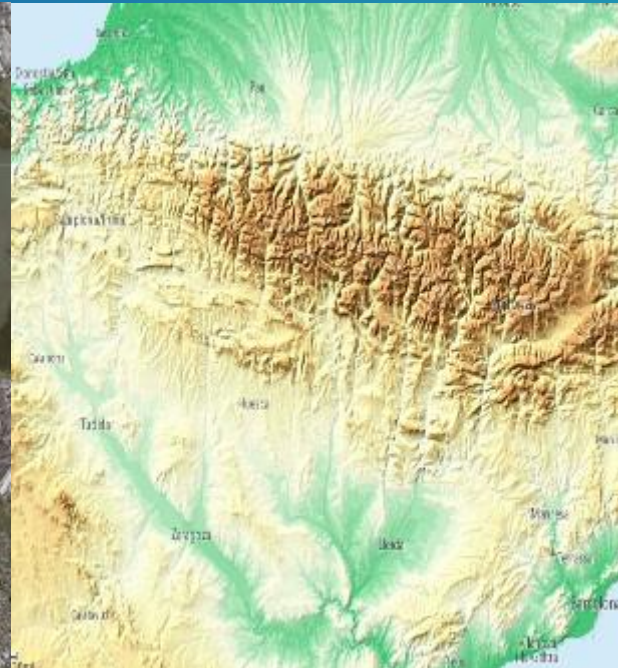
Basemaps



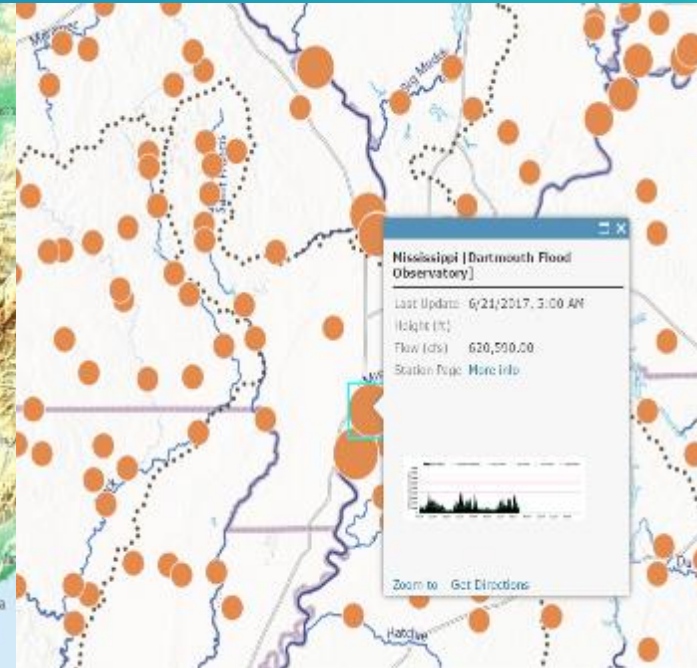
Imagery



Elevation Services



Stream Gauges



Share data with Community Maps

Why?

Something is wrong or missing in the current map

You have more detailed data

Your data is more up to date

and, you want your audience viewing your data

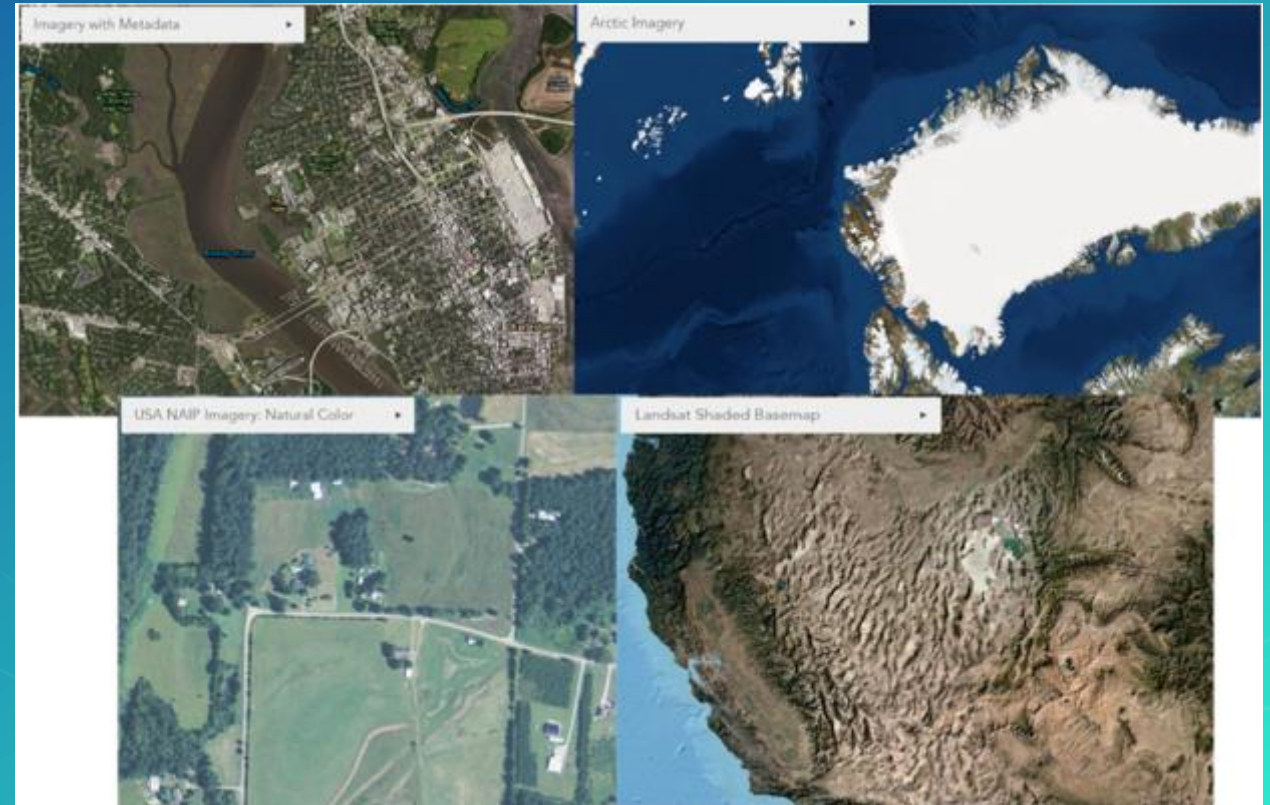
Participate in our basemap feedback services or register and submit layers

Share data with Community Maps

Contribute Imagery to the World Imagery Map

More current and high resolution

Raw imagery format

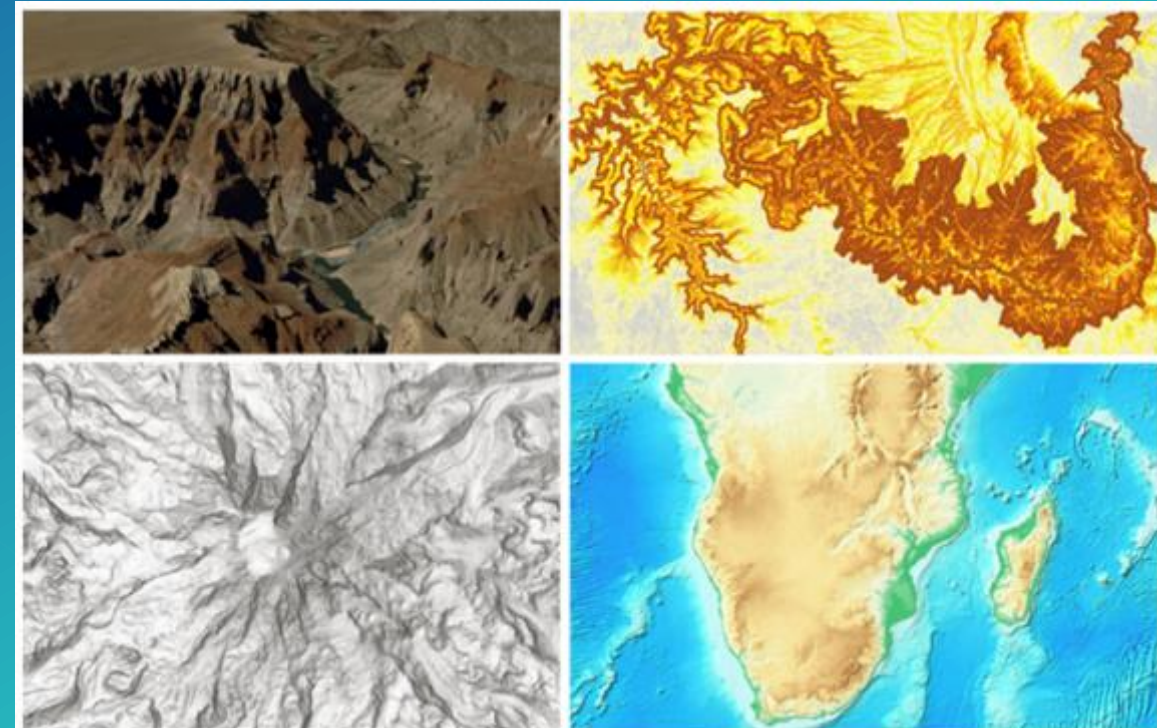
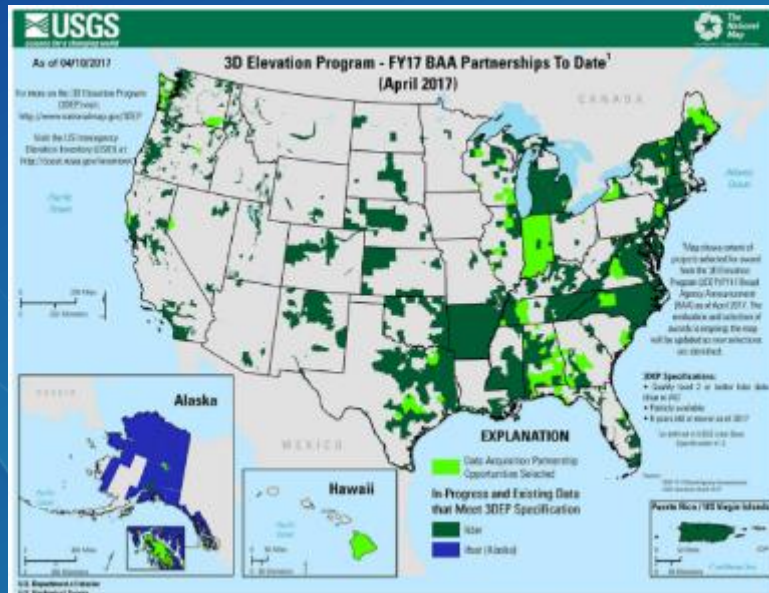


Share data with Community Maps

Contribute Elevation data to the Elevation Services

Current and high resolution LiDAR data format

Participate in the 3DEP program at USGS?



Share data with Community Maps

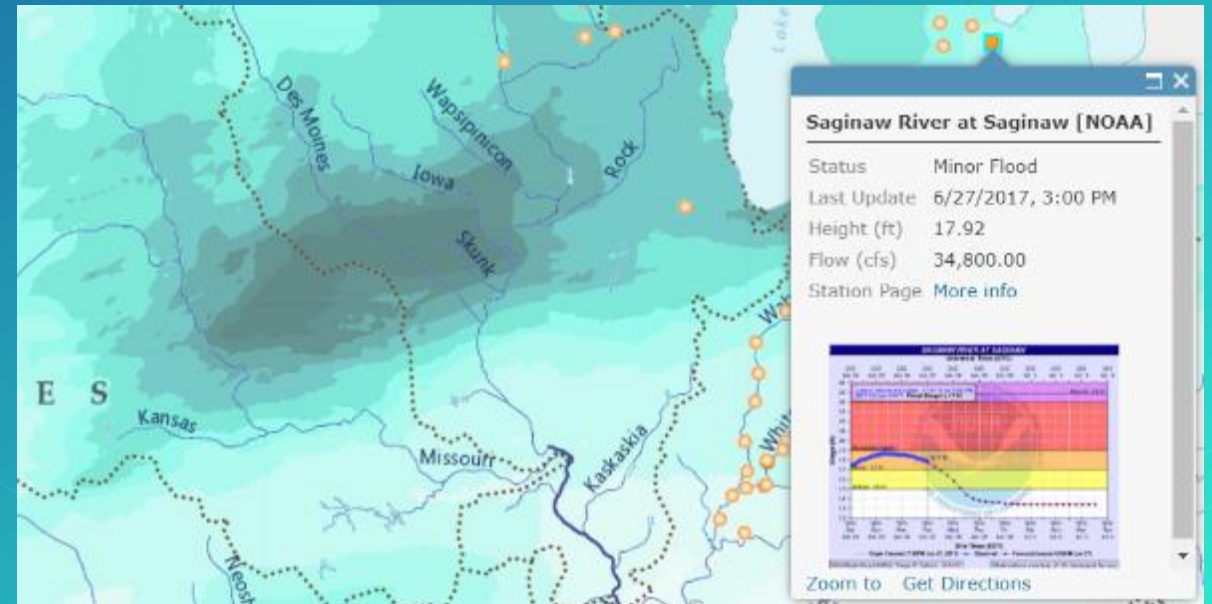
Contribute stream gauge points and live feeds

Supports the suite of hydrologic analysis maps and tools

Real-time depth and/or flow rate observations - live telemetry

Machine readable (XML or tab-delimited)

Time series query to create graphs



Share data with Community Maps

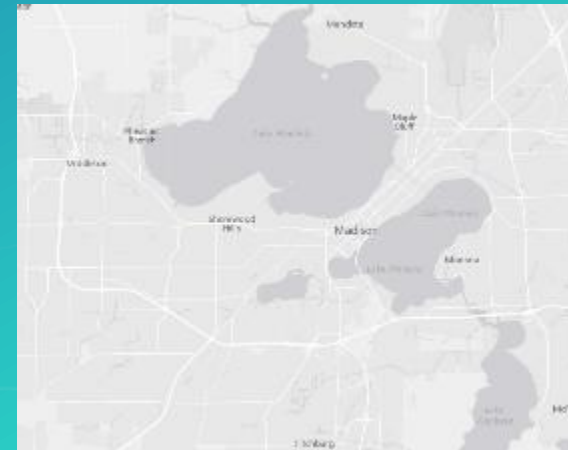
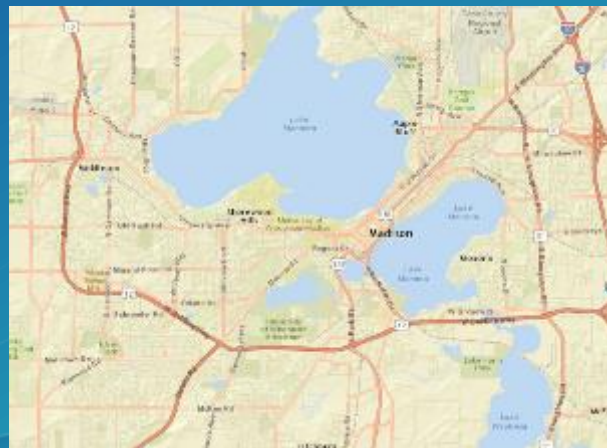
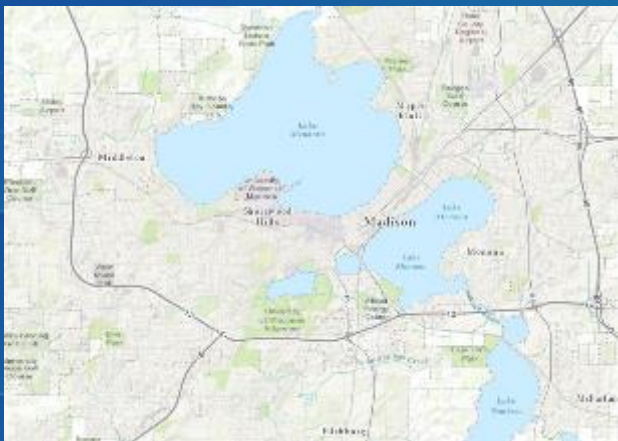
What?

Contribute rich GIS data to the ArcGIS Online basemaps

Buildings and campus features

Parks and land use polygons

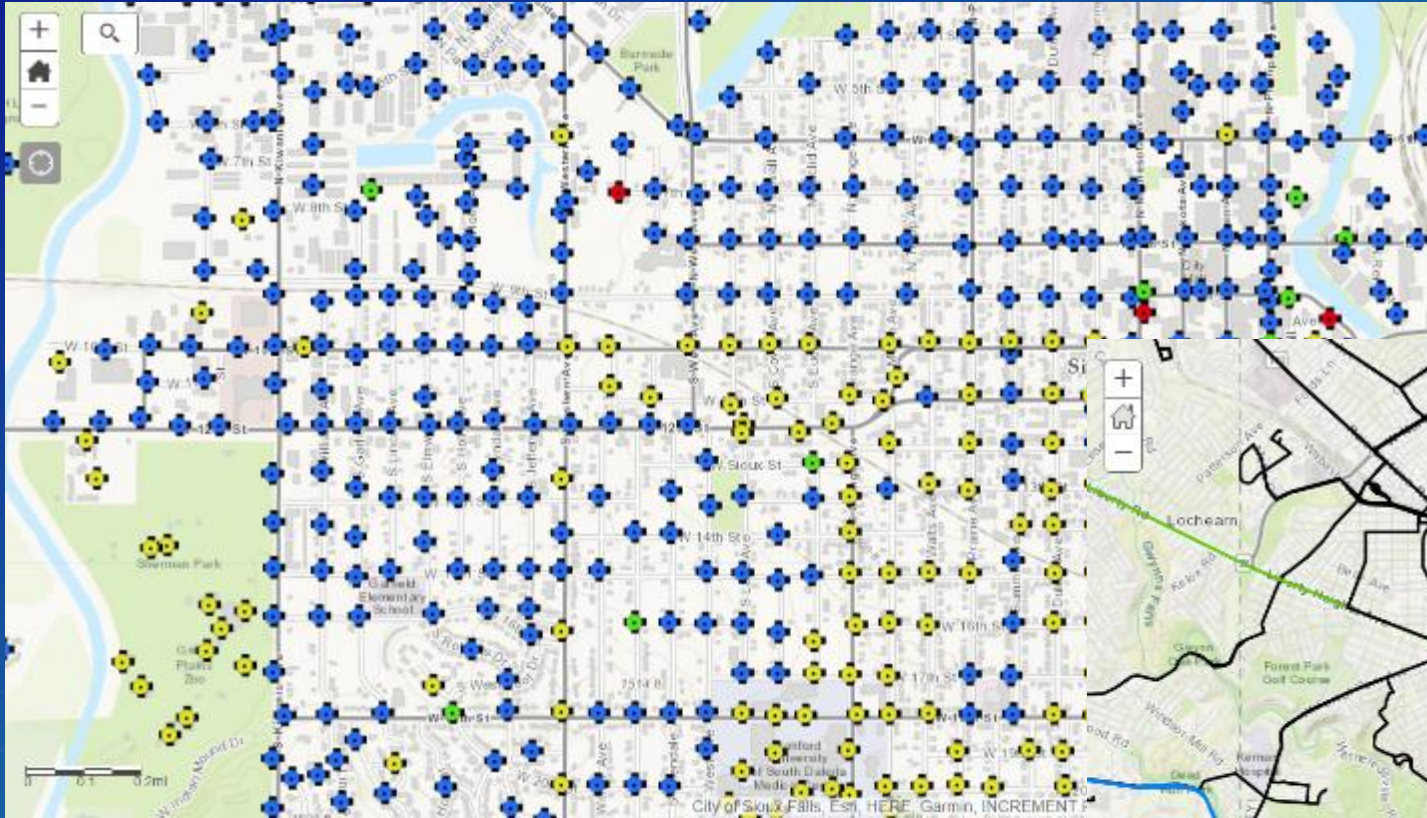
Basemap Layers vs. Operational Layers



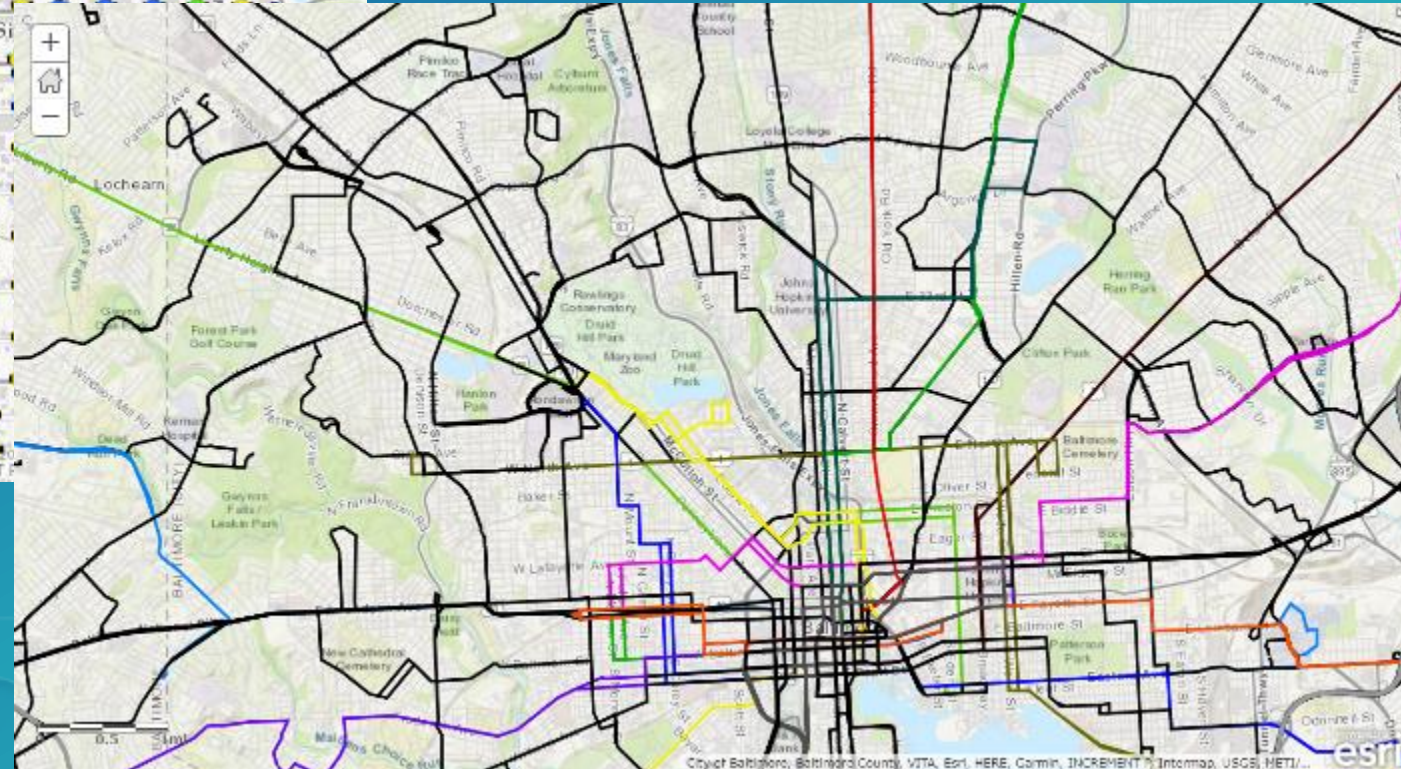
Examples of Operational Layers

What?

Hydrant flushing records



City Bus Routes



Basemap Layers

What?

- **Layers Include:**

- Building Polygons
- Parcel Polygons
- Tree Points
- Land Use Polygons
 - Airports
 - Educational
 - Medical
 - Parks
- Road Lines
- Administrative Lines
- Campus Features
 - Landscape Polygons
 - Hard Surface Polygons
 - Sports Field Polygons



Share Data with Community Maps

Why?

When to share **feedback** or when to share **data**?

"I found a street that should be extended to me. These two streets in my city."

"Several Rivers in my County named correctly in the Topographic map."

"We have water features in our County that are not on the basemap."

"I have a complete set of building footprint polygons for my campus and you (Esri) have none in the map right now."



Report Feedback

Contribute Data

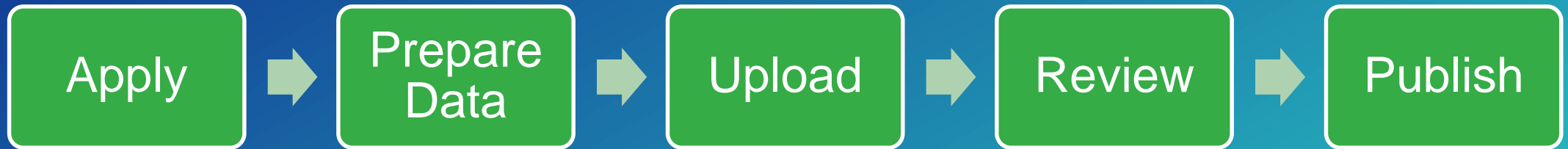
Share data with Community Maps



Share data with Community Maps

How?

Workflow for contributing to the basemaps

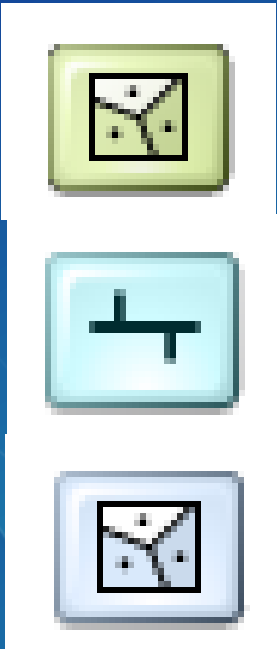


Share data with Community Maps

How?

Data Prep Tools

**Data
sources**



**Data Prep
Tools**



**Output
geodatabase**

 CommunityGDB_Final.gdb

Share data with Community Maps

How?

Ways to get data to Esri:

Zipped file geodatabase

In Beta

ArcGIS Open Data services
Hosted Feature Service

Upload

Service URL

Esri will pull data from your service at a frequency – one time, 6 months, 12 months

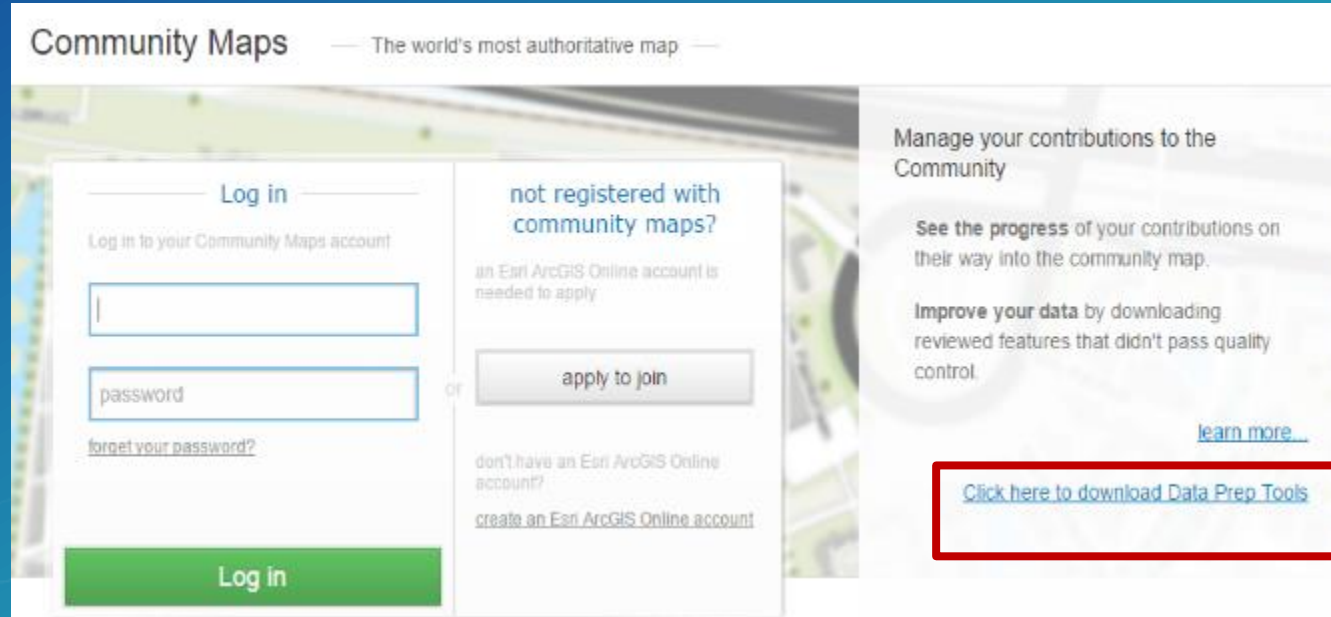
Feature and attribute mapping

Share data with Community Maps

Where?

Community Maps Contributor App

Communitymaps.arcgis.com



The screenshot shows the 'Community Maps' login and registration interface. The header reads 'Community Maps — The world's most authoritative map —'. The main content is divided into two columns. The left column is titled 'Log in' and contains a form for logging in to a Community Maps account, with fields for username and password, a 'Log in' button, and a link to 'forget your password?'. The right column is titled 'not registered with community maps?' and contains an 'apply to join' button, a note that an Esri ArcGIS Online account is needed, and links to 'don't have an Esri ArcGIS Online account?' and 'create an Esri ArcGIS Online account'. To the right of these columns is a section titled 'Manage your contributions to the Community' with text about seeing progress and improving data, a 'learn more...' link, and a red-bordered box containing the link 'Click here to download Data Prep Tools'.

Community Maps — The world's most authoritative map —

Log in

Log in to your Community Maps account

[forget your password?](#)

Log in

not registered with community maps?

an Esri ArcGIS Online account is needed to apply

[apply to join](#)

don't have an Esri ArcGIS Online account?

[create an Esri ArcGIS Online account](#)

Manage your contributions to the Community

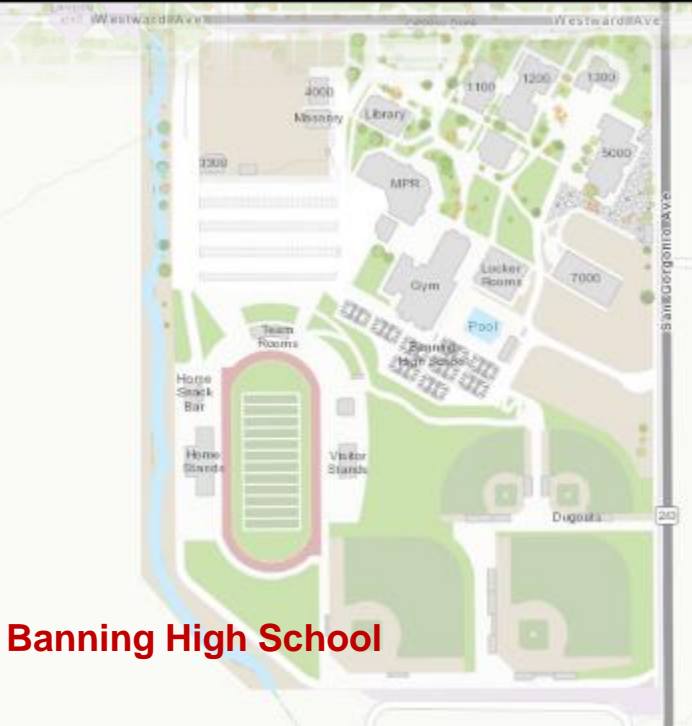
See the progress of your contributions on their way into the community map.

Improve your data by downloading reviewed features that didn't pass quality control.

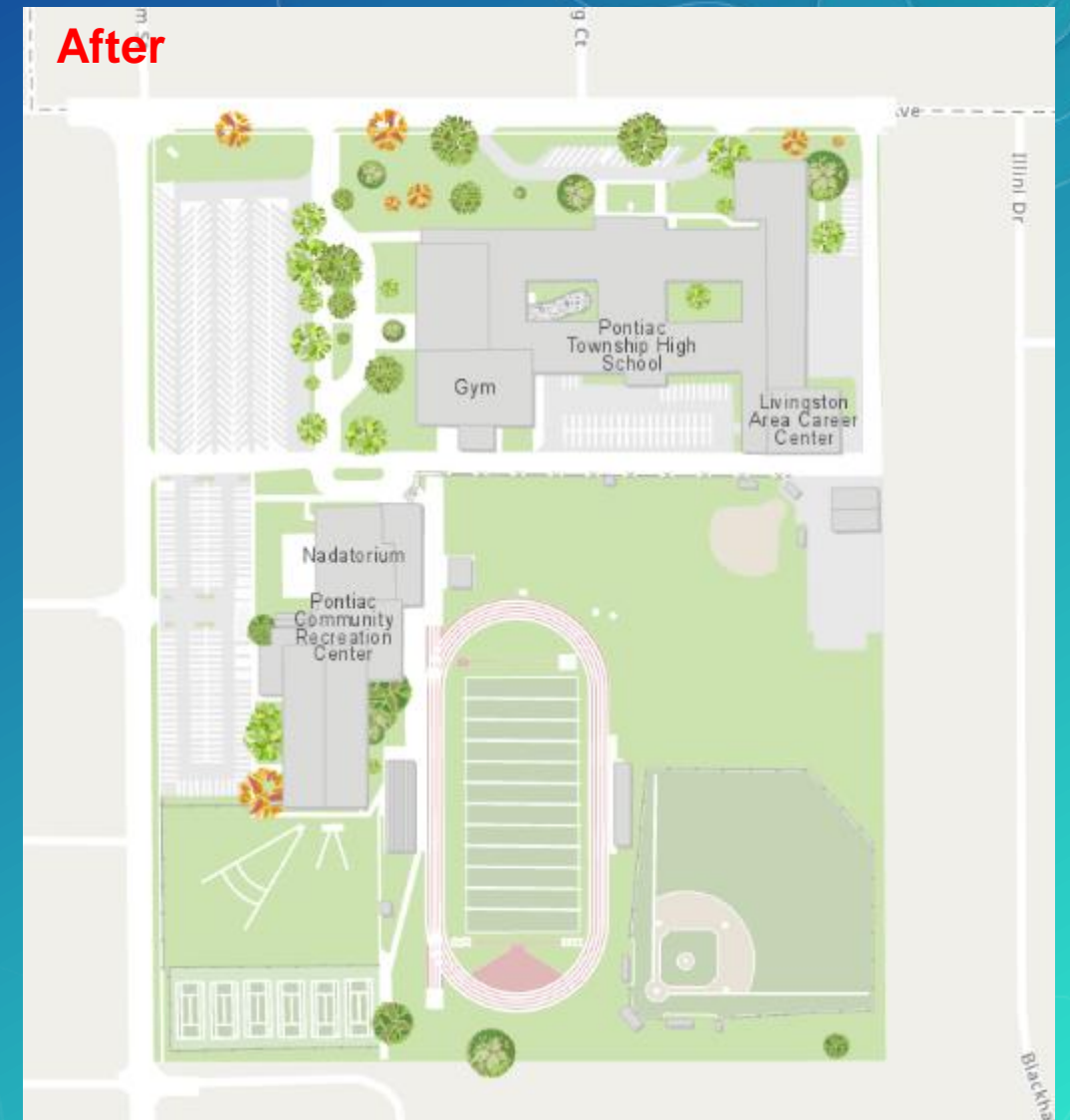
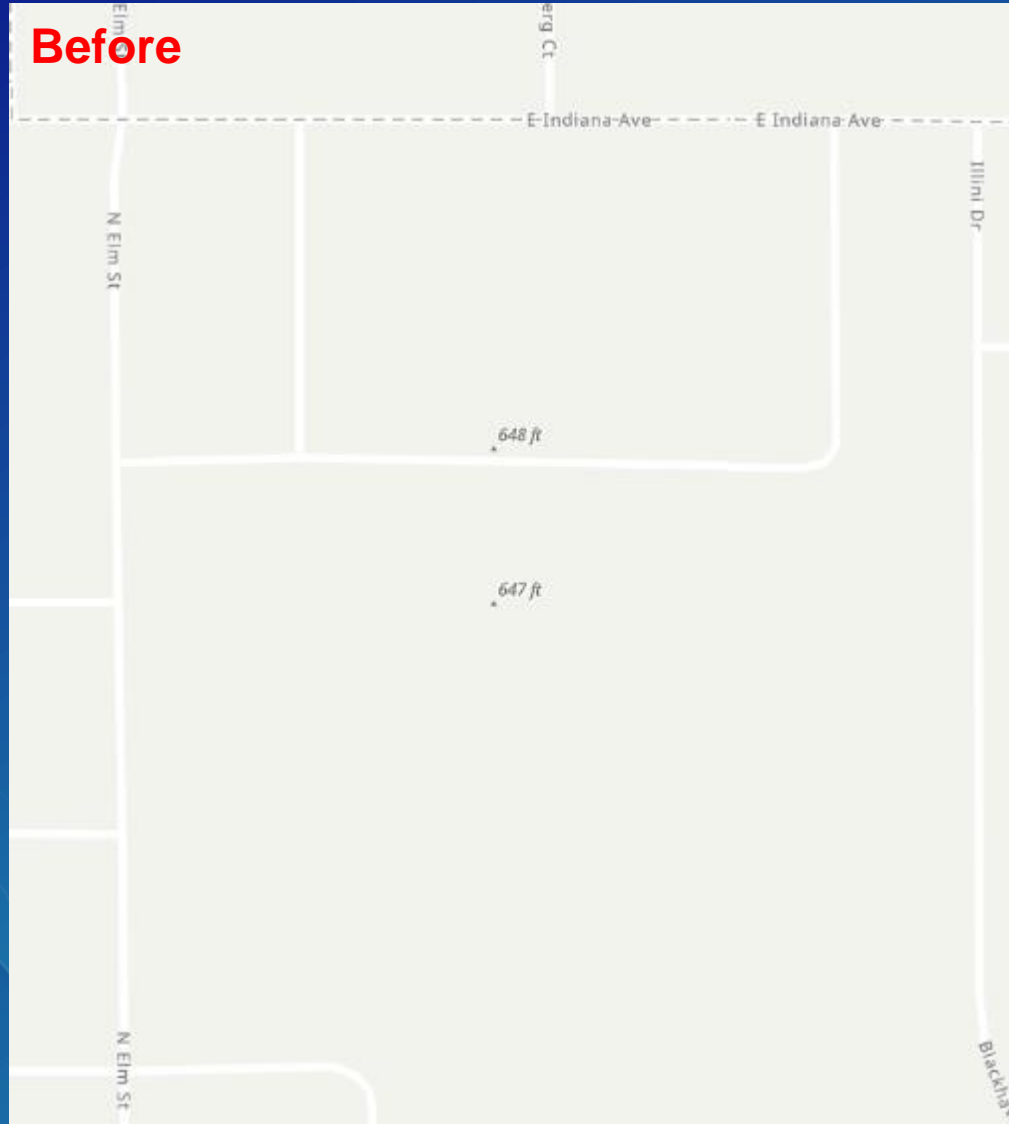
[learn more...](#)

[Click here to download Data Prep Tools](#)

Campus Basemap Initiative



Campus Basemap Initiative



Campus Basemap Initiative

Campuses – University, K-12, Business, Zoo, parks, or similar

New Template

ArcGIS Pro Project

Template for creating features in a campus

Digitize feature directly into Community Maps Model

Tips and tricks available

Make this a GIS day project

Contact us at communitymaps@esri.com if interested!

In Conclusion

Living Atlas – collection of great maps and apps – GIS of the world

Participate in this great collection

Share your apps and maps

Share your data to support Esri's foundation layers "Community Maps"

Livingatlas.arcgis.com for more information

Questions?
communitymaps@esri.com

Frequently Asked Questions

Q: Which basemaps will my GIS data appear in if we contribute to Community Maps, and how long is the process?

Q: What happens if I get a Web Map nominated to the Living Atlas and I take down a service that was used in the Web Map?

Q: What data rights do I need to have before I can donate imagery to the ArcGIS Online basemaps?

Frequently Asked Questions

Q: How often can we submit updates to our Community Maps layers and do I need to send you all of the data again?

Q: Does it cost ArcGIS credits to nominate an item to the Living Atlas?

Q: Can I see the basemap before it's 'live' in ArcGIS Online basemaps to be sure the data is correct?

Frequently Asked Questions

Q: Does contributing my data to Community Maps mean that the public can download my GIS data from ArcGIS basemaps?

Q: How often do you expect us to make updates to the basemap data we contributed?

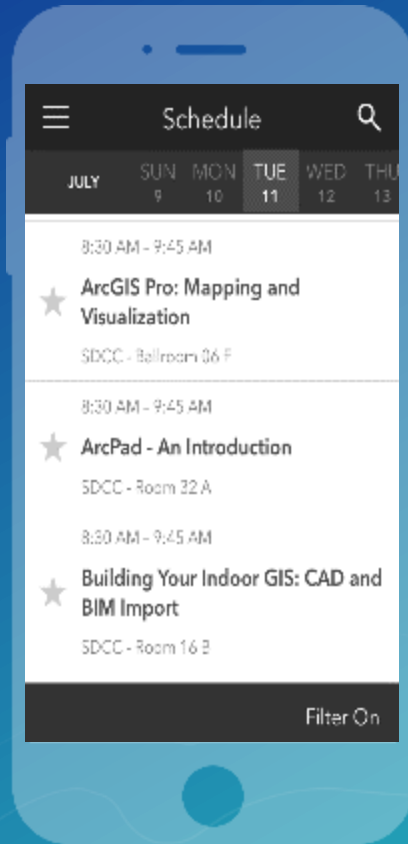
Q: Would you ever replace the imagery I contributed with another source?

Please Take Our Survey on the Esri Events App!

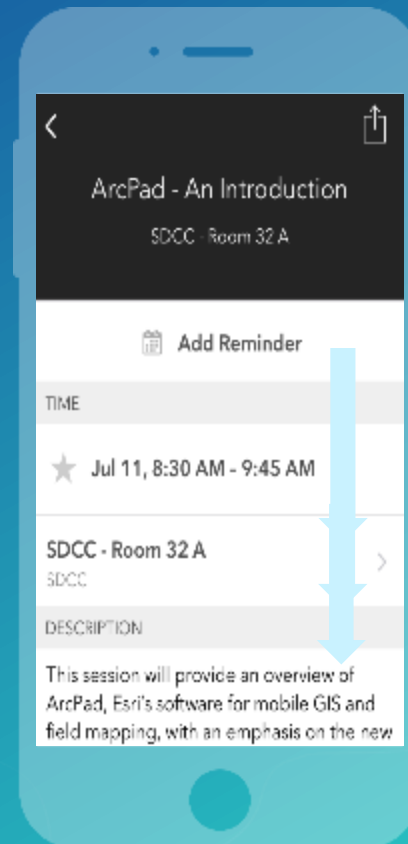
Download the Esri Events app and find your event



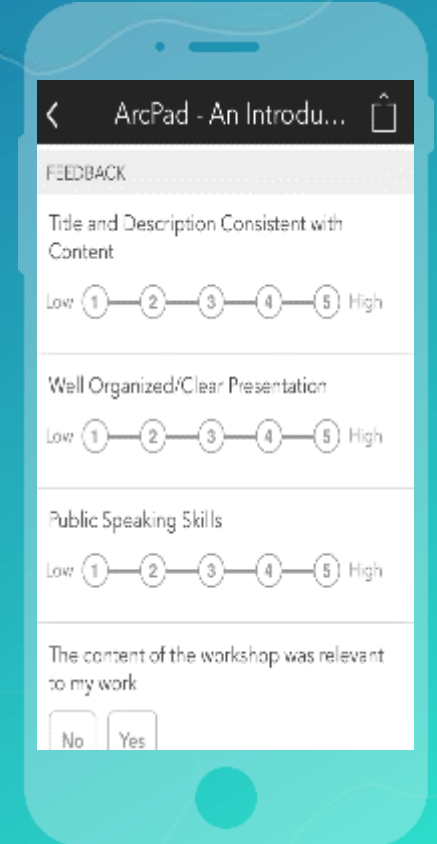
Select the session you attended



Scroll down to find the survey



Complete Answers and Select "Submit"





esri

THE
SCIENCE
OF
WHERE