

# ArcGIS for Local Government: An Overview

SCOTT OPPMANN

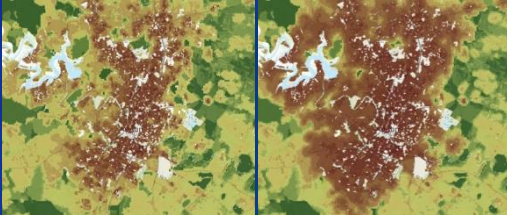
# Agenda

- Introduction
- Why?
- Solution Offering
- What's Next
- Your Feedback



# Using ArcGIS to understand and mitigate challenges

Housing Forecasting



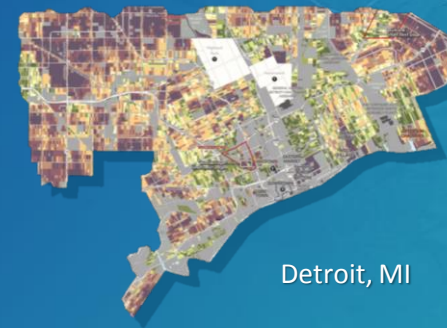
Austin, TX

Urban Design



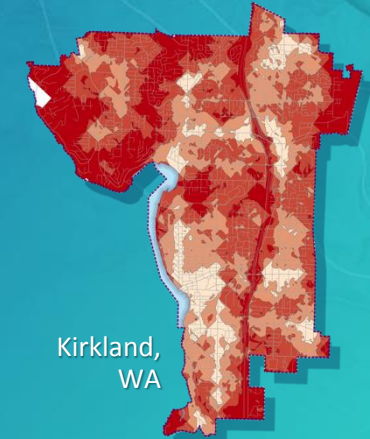
Frisco, TX

Redevelopment



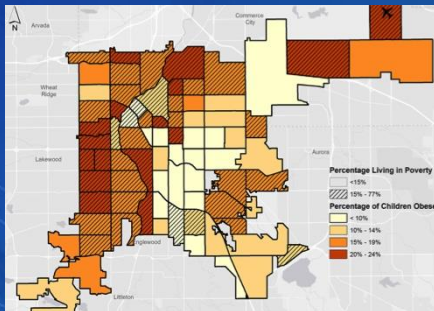
Detroit, MI

Walkability Score



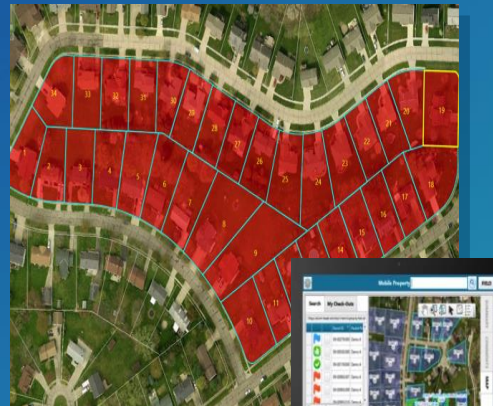
Kirkland, WA

Childhood Obesity and Poverty



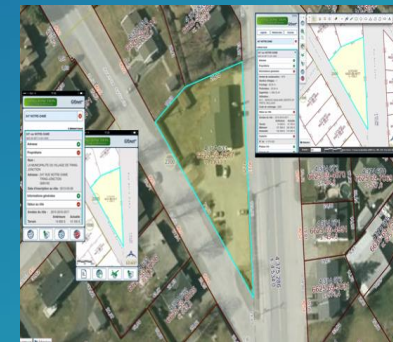
Denver, CO

Property Appraisals



Ohio

Tax Assessment



Quebec, Canada



# GIS in Local Government

## Current State

- Departmental Operations
  - Sophisticated mapping and analysis
  - Integrated with business systems and processes
  - Used to run government operations and allocate resources
- High Visibility Initiatives
  - Smart City
  - Open Data and Transparency
  - Resiliency
  - Performance Management
  - Civic Engagement



# GIS in Local Government

## Common Challenges

- Incomplete implementations
  - Do not leverage the full platform
  - Not integrated across broad spectrum of business units
- Limited to one or, a few, departments
  - Strong in Public Works or Land Records...weak everywhere else
- Expansion challenged by resource constraints
  - Organization structure, technical expertise, etc.
  - Responsive instead of proactive solution delivery
- Little use of sophisticated GIS capabilities
  - Spatial analysis, resource allocation, routing, performance measurement

# ArcGIS as a Platform

Simple, Open, and Configurable

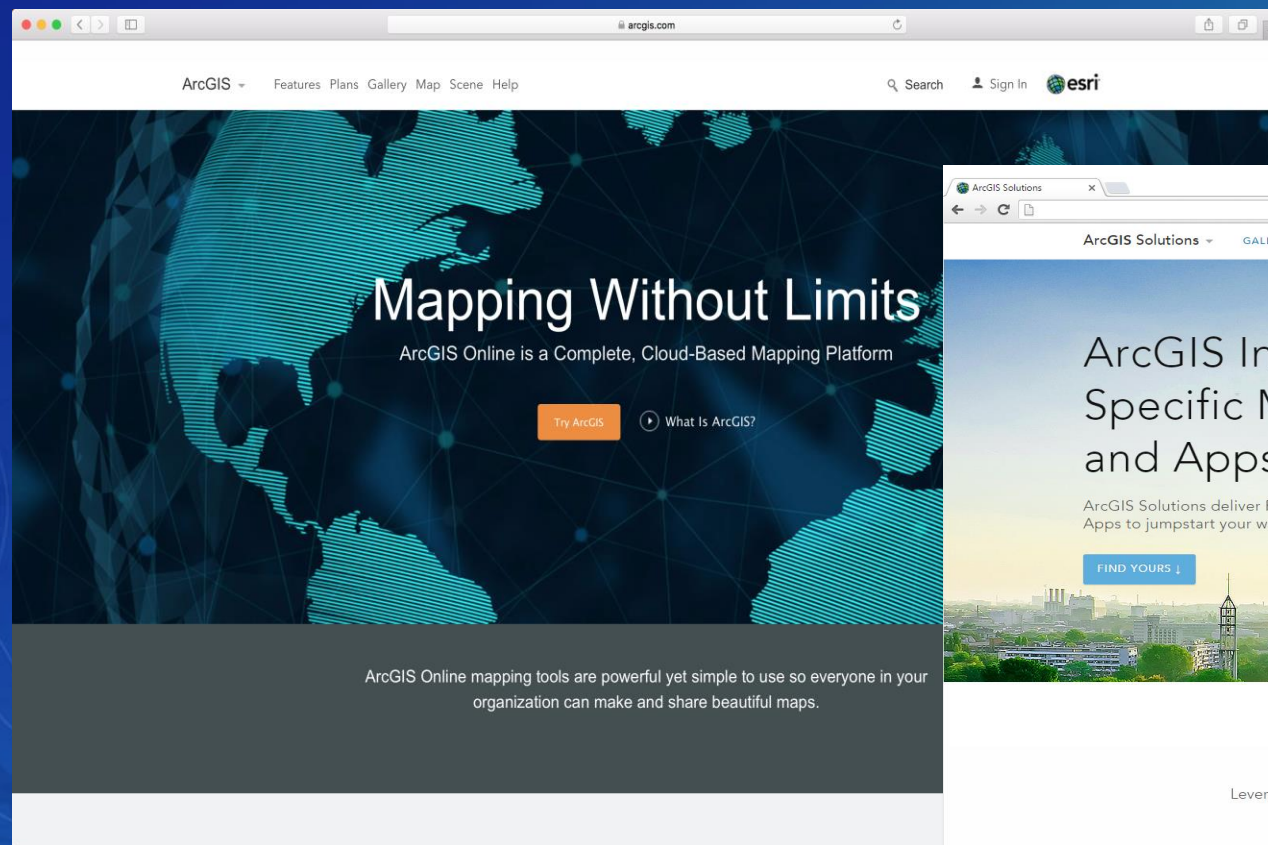


Making Mapping and GIS  
Available Across Your Organization

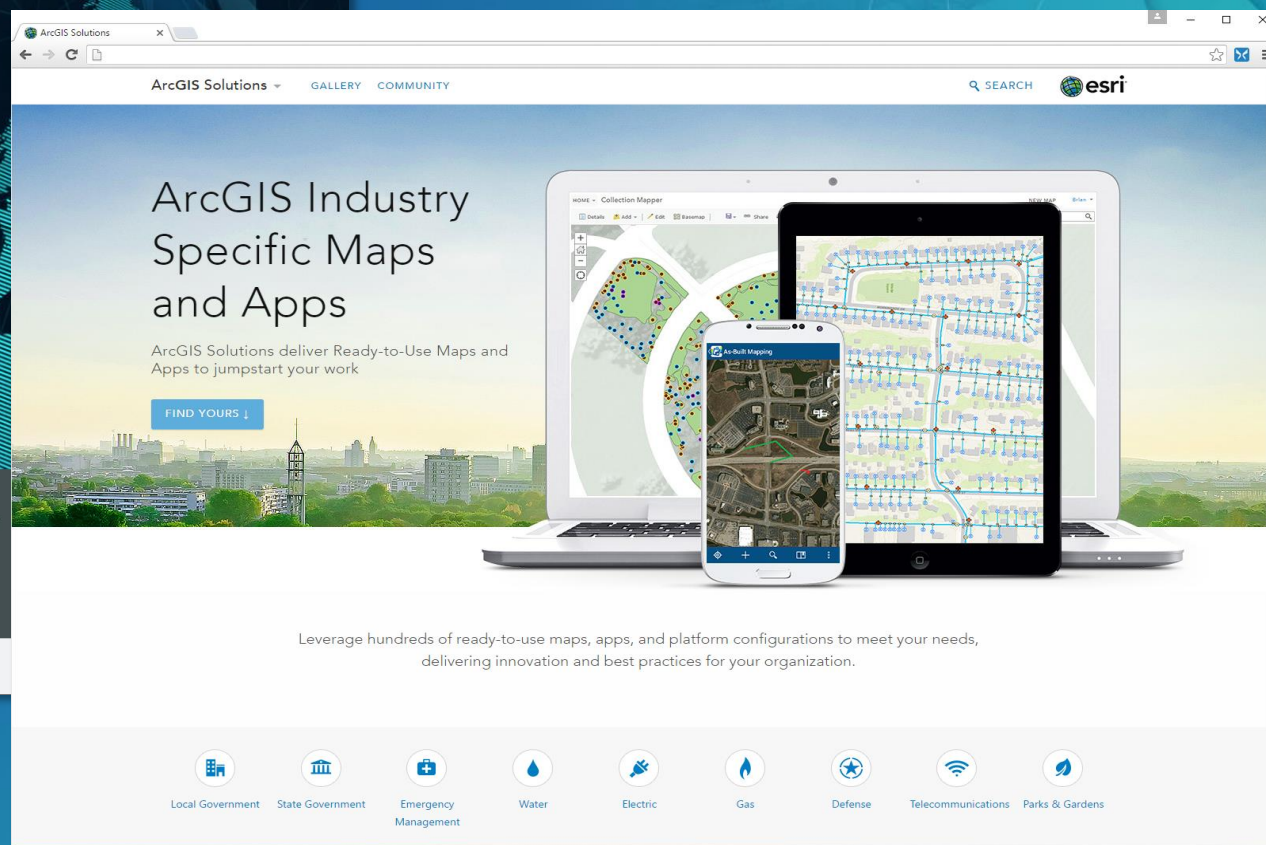
*Transforming the Role of GIS*



# Turning Point



ArcGIS Online

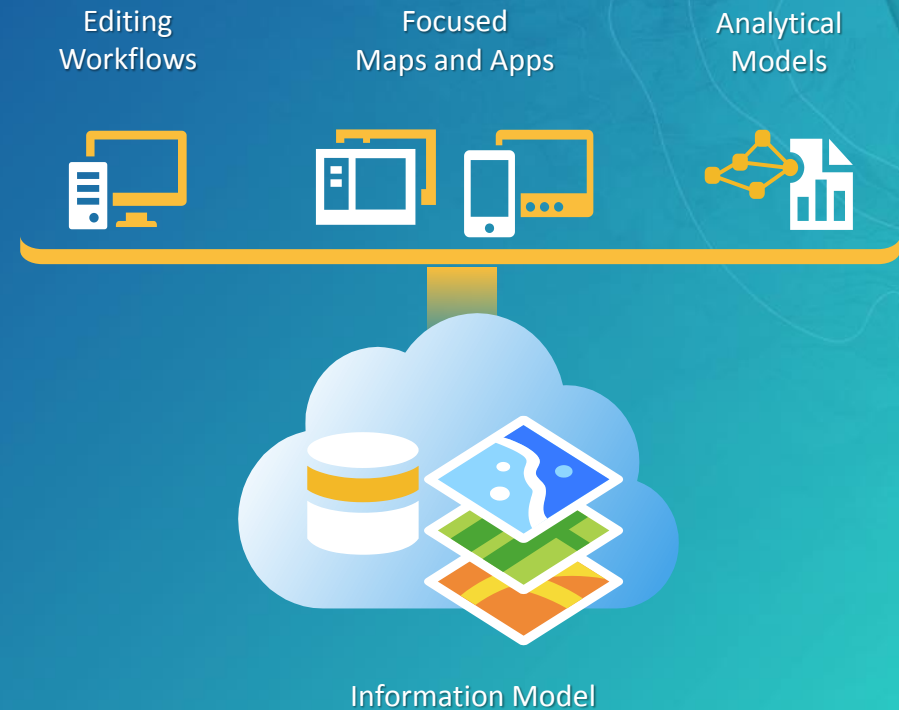


Solutions

# ArcGIS for Local Government

Solutions for Esri's government customers

- Collection of useful maps and apps
  - Configurable and extensible
  - Freely available and fully supported
- Community of users
  - Best Practices / Implementation Support
- Network of Esri Services and Partner offerings
  - Help users implement, sustain and enhance



.....Available on-premise or in the cloud



# ArcGIS for Local Government

- Deliver maps and applications quickly throughout their organization
  - Roadmap for standard capabilities, improve service delivery, expand reach, innovation....
- Stay current with future releases / avoid legacy technology
  - Save time and money, leverage new ArcGIS offerings, focus on complex or unique problems....
- Unlock geospatial platform so it can be leveraged by many
- Leverage the collective knowledge of the entire community
  - Best practices, industry tradecraft....

# ArcGIS for Local Government

Groundbreaking and Incremental Improvements

## Incremental Releases

Information Models  
Custom Web Apps  
Flex Widgets  
Desktop Add-ins  
Resource Center

Responsive Web Apps  
Web App Templates  
Desktop Add-ins  
Solution Site

Feature Layers  
ArcGIS Pro Projects  
Web AppBuilder Widgets  
Web App Templates  
Deployment Tool

Tax Parcel Viewer      Photo Survey  
Public Notification      3D Basemaps  
My Government Services  
Citizen Problem Reporter

## Address Management

Community Events  
Opioid Epidemic  
Vector-Borne Diseases  
Pre-Incident Planning  
Homelessness

Tax Parcel Editing  
Adopta      Road Closures  
Blight Remediation  
Election Polling Places

2008

2012

2016

Continuous Improvements



Elections

- Early Voting
- Election Polling Places
- Polling Wait Times
- Election Results
- Historical Election Results Gallery
- My Elected Representative

Land Records

- Tax Parcel Editing
- Data Reviewer for Parcels
- Public Land Survey Editing
- Parcel Drafter
- Community Parcels
- Value Analysis Dashboard
- My Tax Distribution
- Tax Reverted Properties
- Assessment Appeals
- Tax Parcel Viewer
- School Locator
- Residential Comp Finder
- Tax Map Book

Public Health

- Opioid Awareness Maps
- Naloxone Deployment Reporter
- Drug Activity Reporter
- Drug Drop-off Locator
- Drug Drop-off Calculator
- Health Resource Inventory
- Opioid Treatment Locator
- Pain Management Locator
- Opioid Response Dashboard
- Homeless Point-in-Time Counts
- Homeless Service Locator
- Homeless Activity Reporter

Law Enforcement

- Cell Phone Analysis
- Near Repeat Analysis
- Public Safety Incident Maps
- Field Interview Map
- Tactical Operation Planner
- Tactical Operation Dashboard
- Tactical Operation Surveillance

Fire Service

- Fire Station Wall Map
- Fire Incident Maps
- Fire Run Book
- Target Hazard Analysis
- Pre-Incident Plan Coordinator
- Pre-Incident Plan Field Inventory
- Pre-Incident Plan Dashboard
- Pre-Incident Plan Locator
- Fire Hydrant Inspection
- Fire Safety Survey
- AED Reporter
- AED Locator
- AED Inventory
- Emergency Assistance

Public Works

- Campus Place Locator
- Campus Editing
- Citizen Problem Reporter
- My Government Services
- Plans and Drawings
- Road Maintenance Agreements
- Public Parking
- Capital Project Planning
- Capital Project Tracking
- Road Closures
- Vision Zero
- Crash Analysis
- Road Network Editing
- Adopta
- Flood Planning
- SnowCOP
- Participatory Budgeting

- Sign Inventory
- Signal Inventory
- Streetlight Inventory
- Street Tree Inventory
- Bridge Inventory
- Sidewalk Inventory
- Pavement Marking Inventory
- Guardrail Inventory
- Street Furniture Inventory
- Railroad Crossing Inventory
- Mosquito Adulticide Planning
- Mosquito Field Observations
- Mosquito Health Concerns
- Mosquito Larvicide Reporting
- Mosquito Population Surveillance
- Mosquito Service Request
- Mosquito Spray Areas
- Mosquito Spray Exclusions

Planning and Development

- Address Data Management
- Data Reviewer for Addresses
- Community Addresses
- Address Field Verification
- Address Crowdsourcing
- Site Selector
- Live, Work, Locate
- Incentive Zones
- Events Calendar
- Events Permit
- Events Permit Review
- Events Site Map
- Events Coordination
- Events Map Gallery
- 3D Public Survey
- Visualize Proposed Developments
- Visibility Assessment

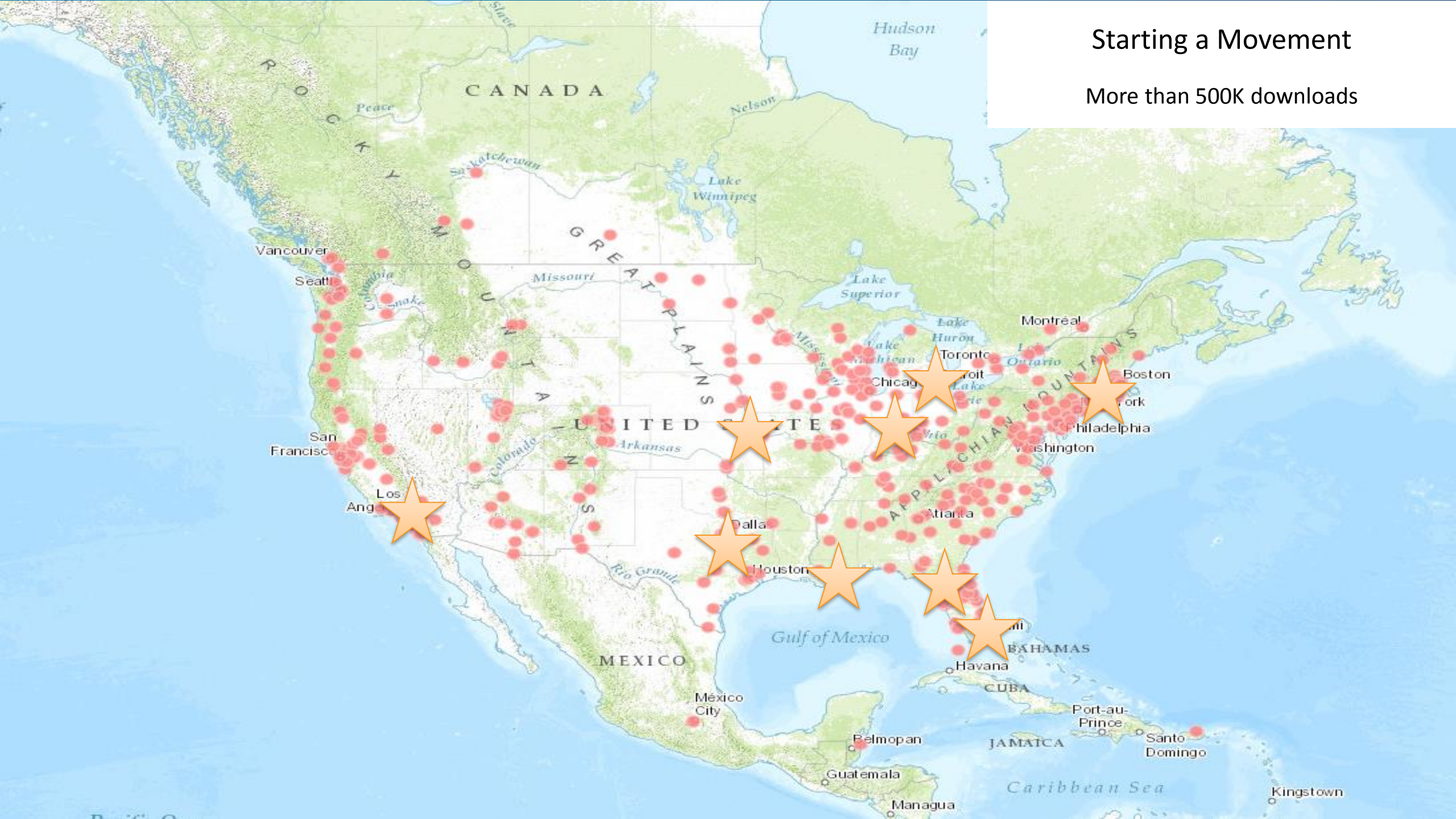
- Calculate Solar Radiation
- Shadow Impact Analysis
- Demolition Tracker
- Mortgage Counseling Locator
- Blight Status
- Photo Survey
- Park Locator
- Code Violation
- Public Comment
- Public Notification
- Land Use Inquiry
- Floodplain Inquiry

Entire Organization

- Administrative Area Data Management
- Local Government Basemaps
- Data Reviewer for Basemaps
- Local Government 3D Scenes
- ArcGIS Online Model Organization
- Local Government Information Model
- Service Catalog

## Starting a Movement

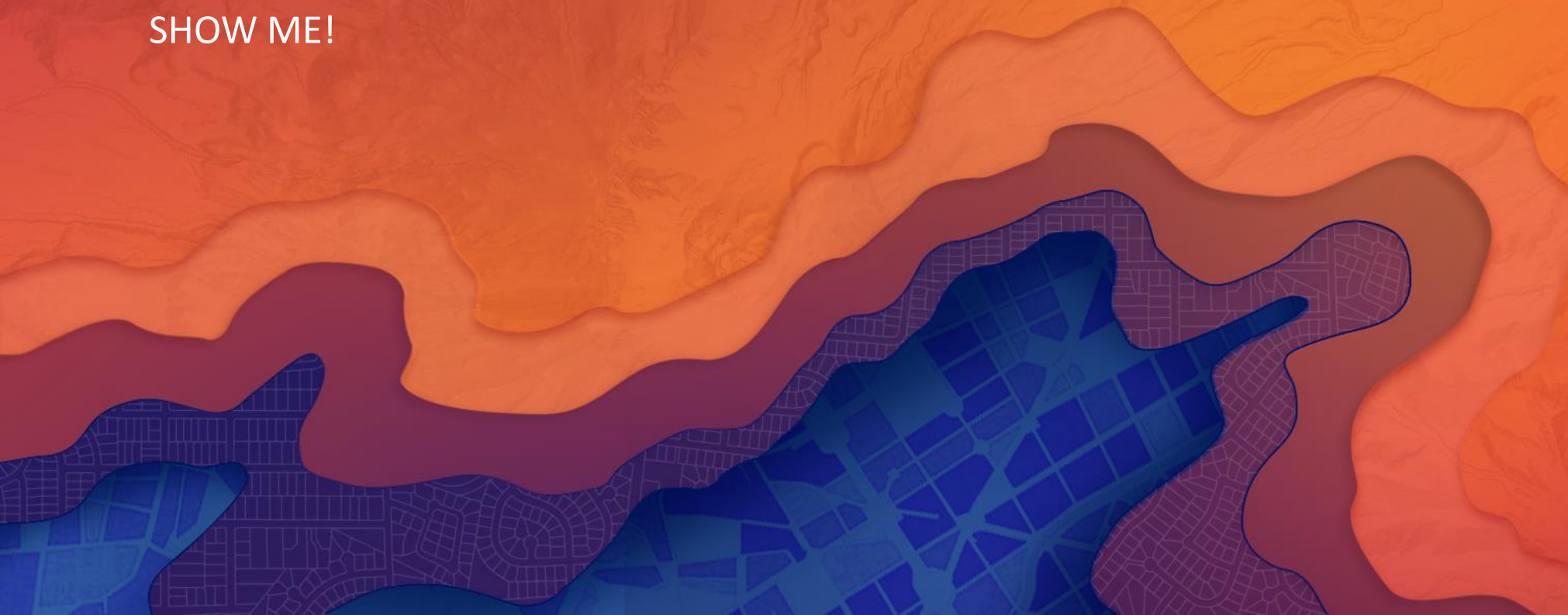
More than 500K downloads





# ArcGIS for Local Government

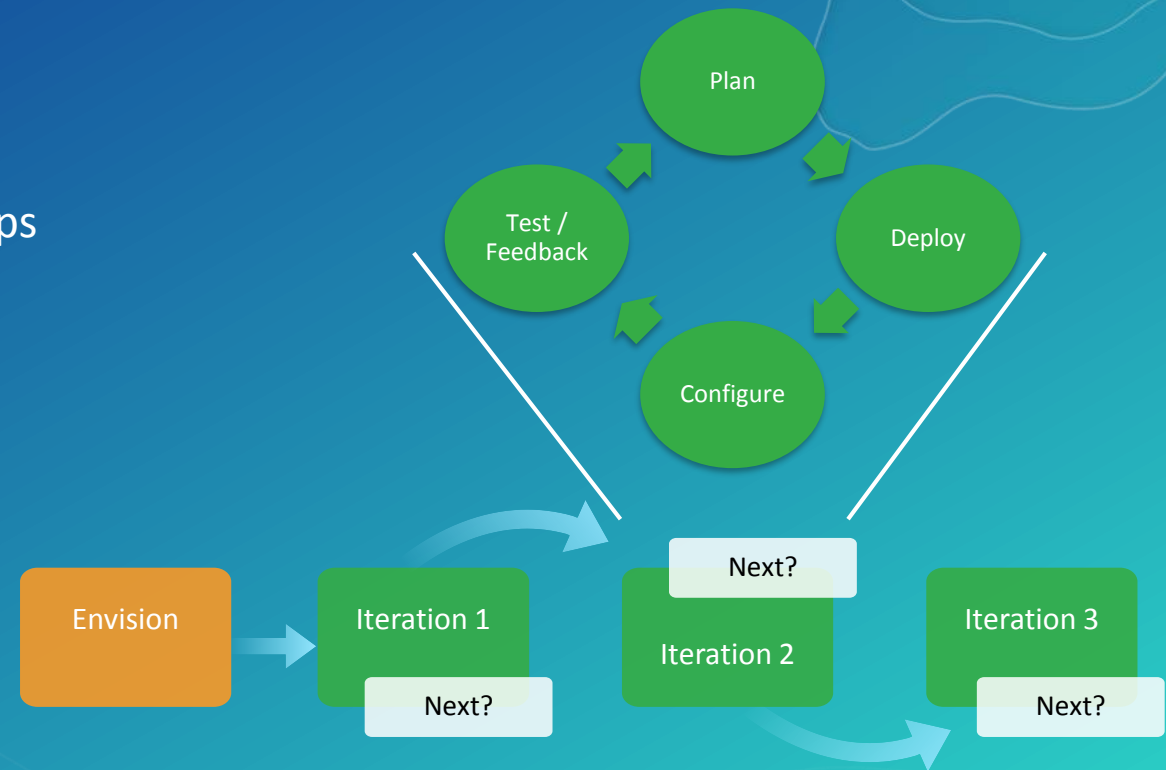
SHOW ME!



# How do I get started?

Leverage solution offerings to maximize technical expertise and minimize deployment time

- Deploy quick wins
  - Configure your mapping platform
  - Align with strategic business needs
  - Implement one or more focused maps and apps
  - Organize your data
  - Iterate....

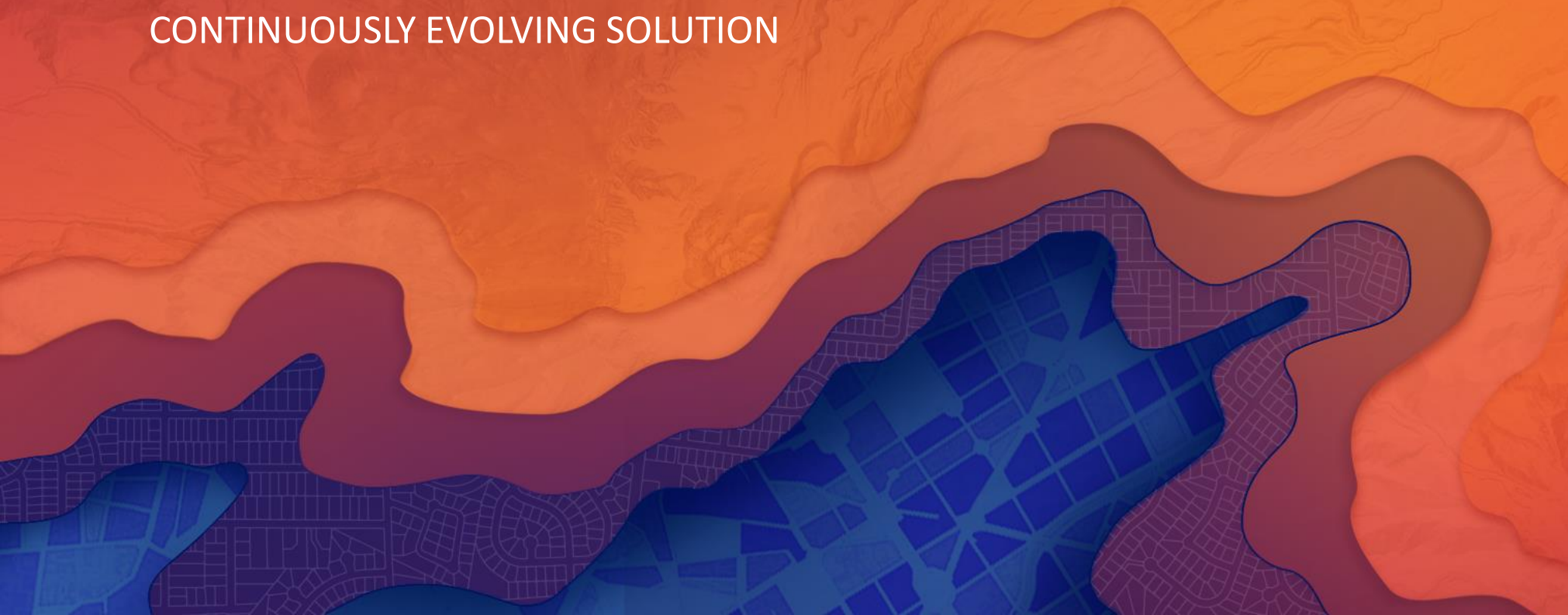


...embrace an agile implementation approach



# It's a Process

CONTINUOUSLY EVOLVING SOLUTION



# What's New

June 2017 Release

- New offerings that support strategic initiatives like
  - Homelessness
  - Opioid Epidemic
  - Blight Remediation / Neighborhood Revitalization
- Enhancements to existing offerings
  - Crowdsourcing tools / scripts
  - Community Address / Parcels
  - Shadow Impact Analysis
  - Visibility Assessment
  - ArcGIS Solution Deployment Tool



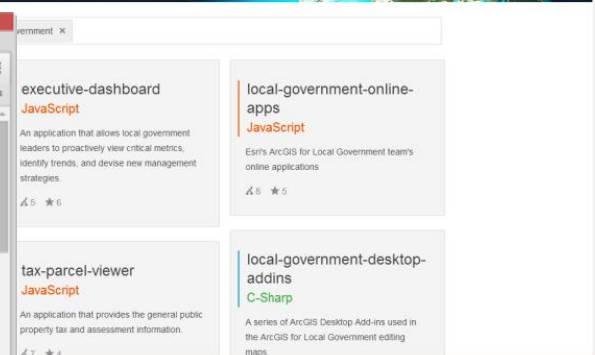
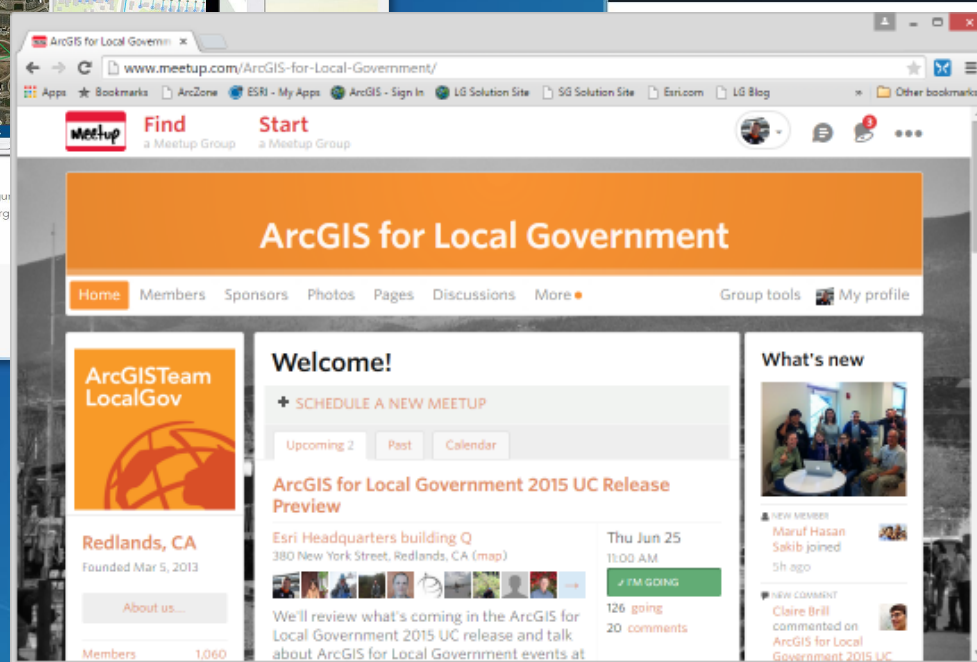
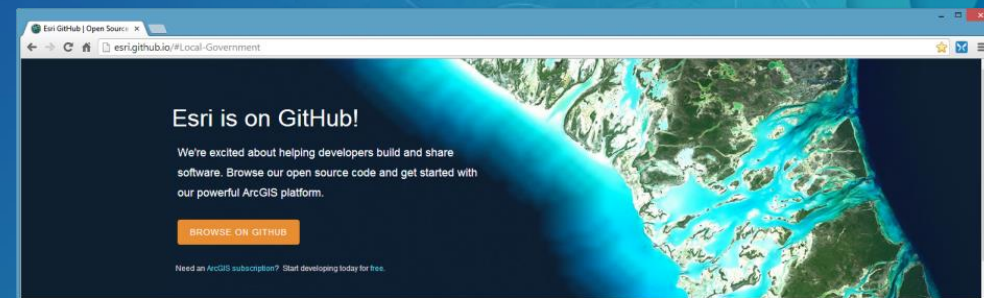
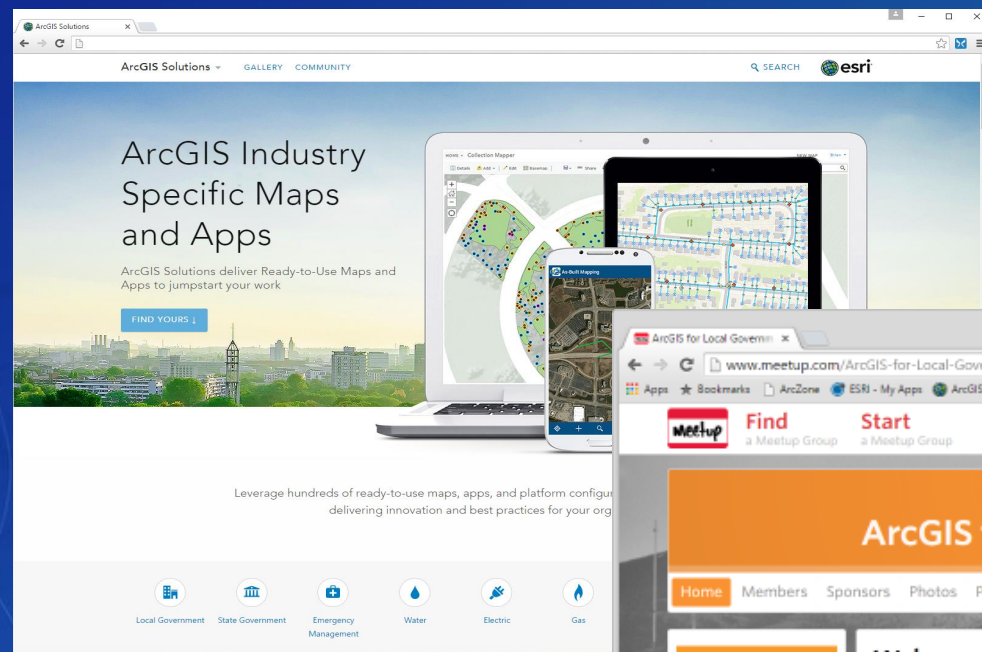
# Road Ahead

Post UC Plans

- New maps and apps
  - Public Safety – Community Events (v. 2.0), Public Crime Maps, Warming / Cooling Centers
  - Public Works – Mobility / Vision Zero, ROW Permitting, Capital Project Planning Enhancements
  - Blight Remediation – Blight Early Warning
  - Planning / Econ Development – Permit Status, Public Notification (v. 2.0)
  - Executive – Performance Management
- Simplify adoption
  - New deployment approaches, simplified information model
- Incorporate additional platform offerings
  - ArcGIS Hub / Open Data, ArcGIS Pro, Workforce, Insights

# Join the Community

It's not just about the technology



# Closing

- Deliver a “local government GIS” that enables your success
  - Easy to deploy and sustain
  - Respond to strategic initiatives
  - Maximize technical expertise
- Evolve and grow the collection of apps
- Develop a community of users
- Provide a platform for partners to deploy their solutions



# UC Events

- ArcGIS for Local Government Sessions
  - Ten tech workshops
  - Thirteen demo theatre sessions
- Special Interest Group
  - Wednesday lunch for LG
- State and Local Government Social
- Solution Island
  - Focused conversations / support



Search for: “ArcGIS for Local Government”

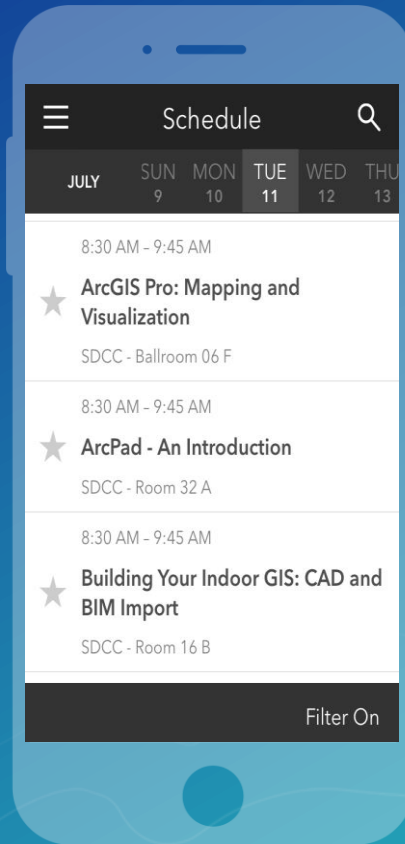
<http://www.esri.com/events/user-conference/agenda>

# Please Take Our Survey on the Esri Events App!

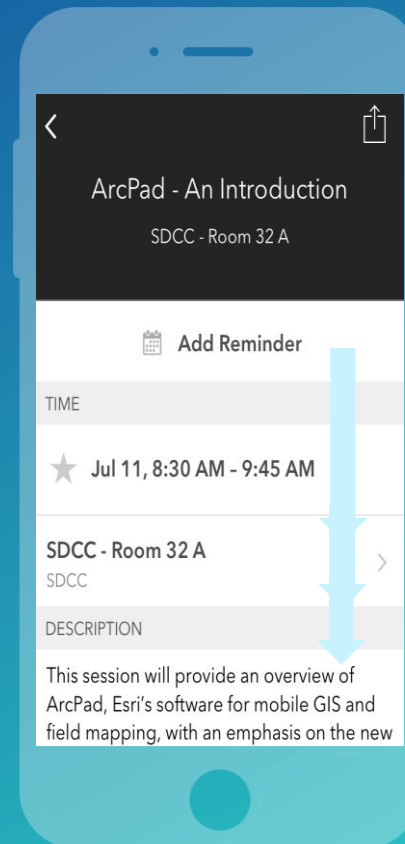
Download the Esri Events app and find your event



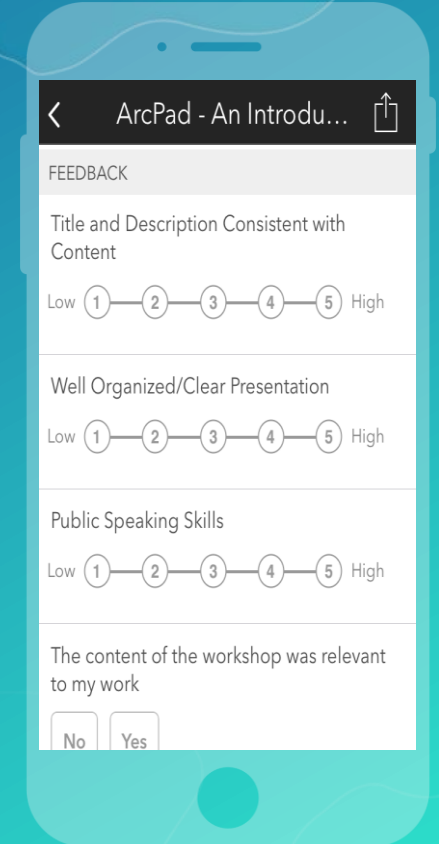
Select the session you attended



Scroll down to find the survey



Complete Answers and Select "Submit"



# Thank you

Be innovative, aware, and know you are not alone

-  <http://solutions.arcgis.com/#Local-Government>
-  <http://meetup.com/ArcGIS-for-Local-Government/>
-  [@ArcGISLocalGov](https://twitter.com/ArcGISLocalGov)
-  <http://esri.github.com>





esri

THE  
SCIENCE  
OF  
WHERE