

Configuring the ArcGIS for Local Government Solution

CHRIS FOX
SCOTT OPPMANN

Agenda

- Introduction
- Implementation Patterns
- Configuration Approaches
- Your Feedback

ArcGIS as a Platform

Simple, Open, and Configurable



Making Mapping and GIS
Available Across Your Organization

Transforming the Role of GIS

A Whole New Type of GIS Is Emerging

Connecting Individuals, Organizations and Communities



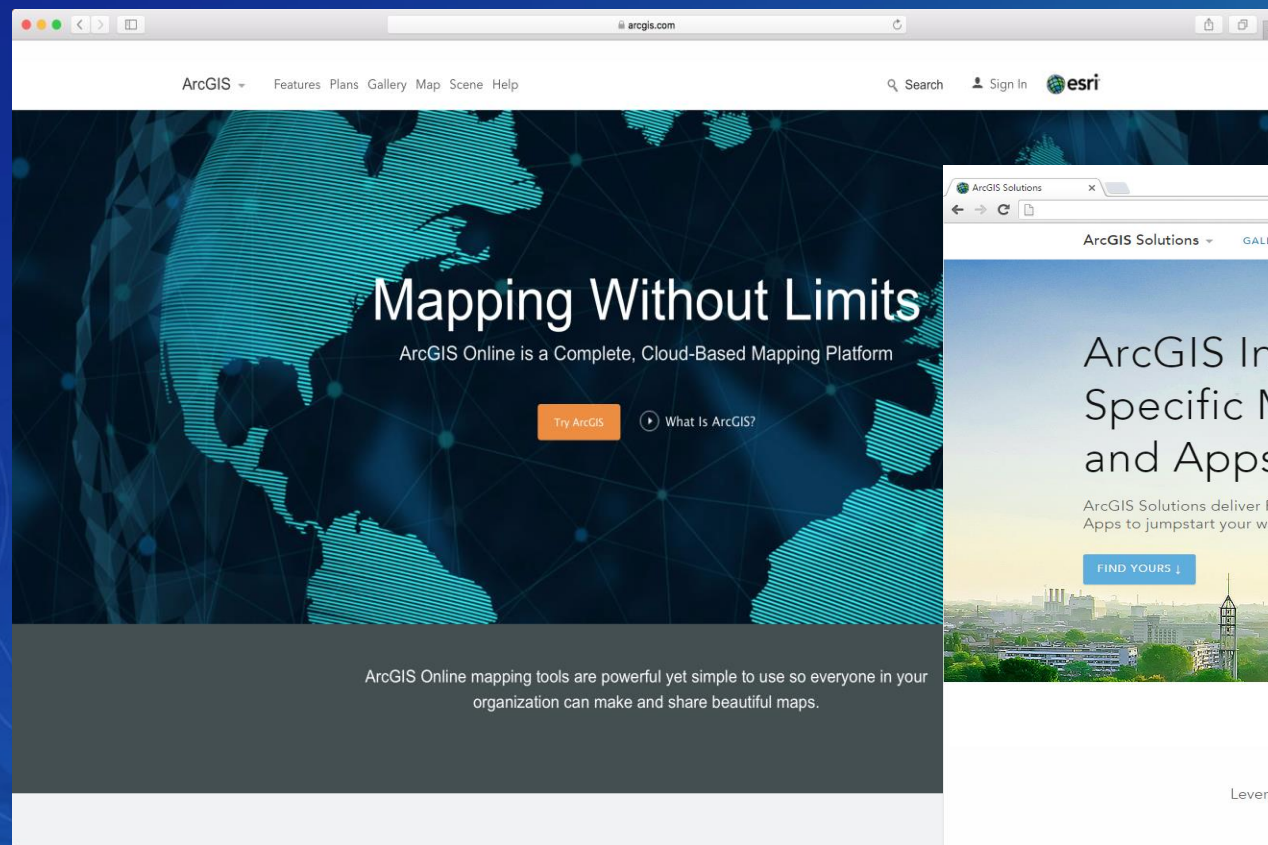
Your Local Government GIS is Evolving



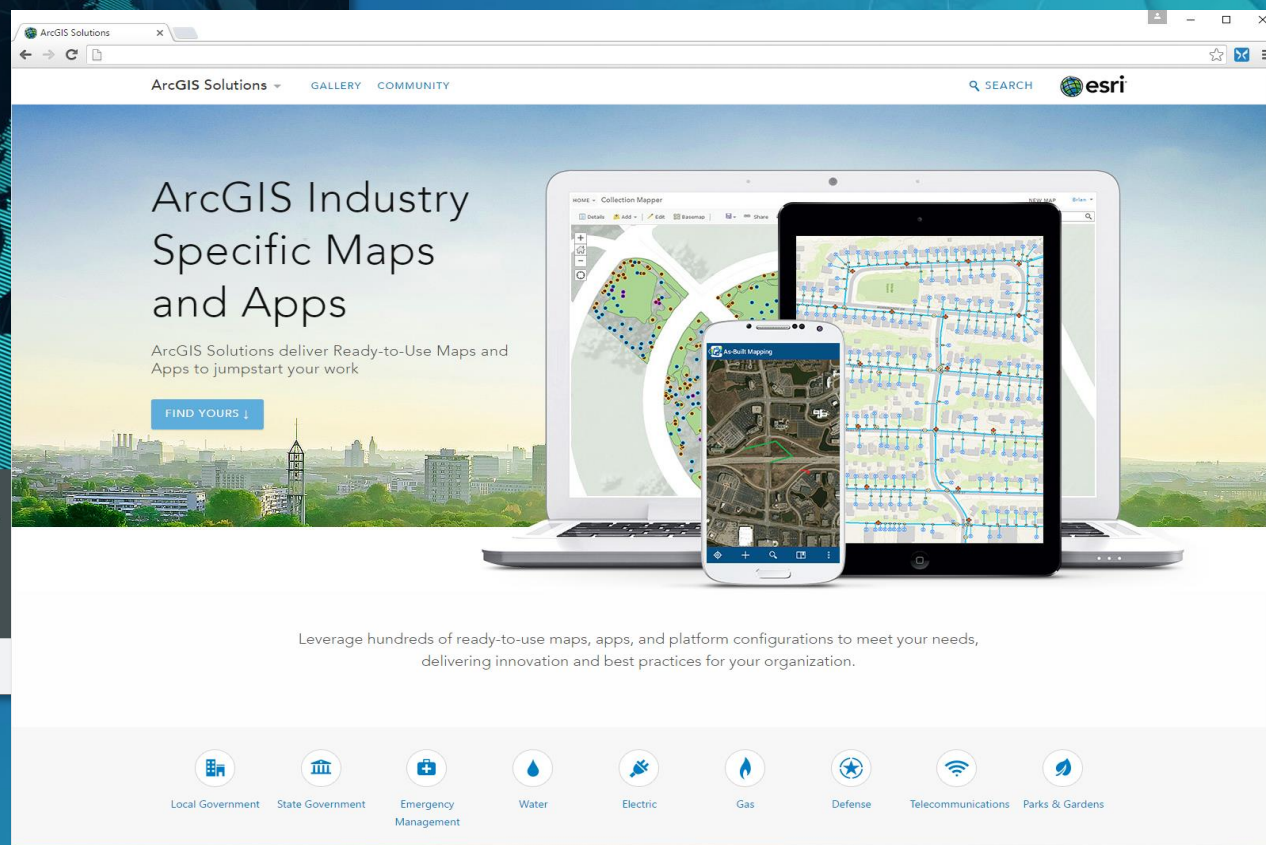
Expanding Capabilities

ArcCatalog	→	ArcGIS Organization
Client / Server	→	Web Services & Apps
Stand-Alone Desktop	→	Connected Desktop
Data Models	→	Web Maps & Layers
Static Data	→	Real-Time
Single Server	→	Distributed Computing
Custom Applications	→	Configurable Solutions & Apps
Proprietary Data	→	Open Data & Shared Services
2D Features	→	3D Features

Turning Point



ArcGIS Online

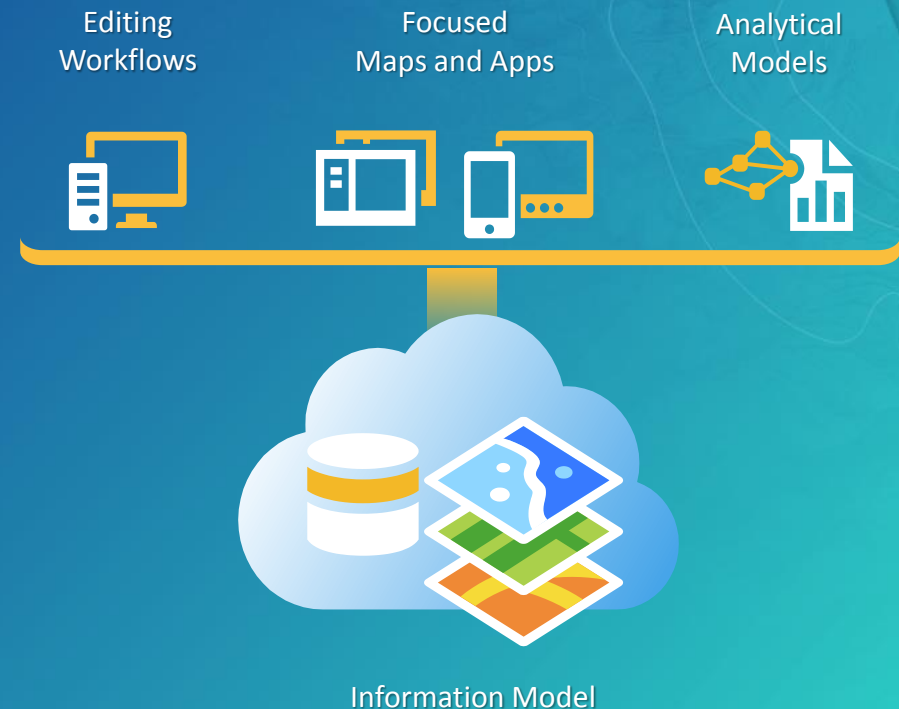


Solutions

ArcGIS for Local Government

Solutions for Esri's government customers

- Collection of useful maps and apps
 - Configurable and extensible
 - Freely available and fully supported
- Community of users
 - Best Practices / Implementation Support
- Network of Esri Services and Partner offerings
 - Help users implement, sustain and enhance



.....Available on-premise or in the cloud

Our Mission

- Deliver maps and applications quickly throughout their organization
 - Roadmap for standard capabilities, improve service delivery, expand reach, innovation....
- Stay current with future releases / avoid legacy technology
 - Save time and money, leverage new ArcGIS offerings, focus on complex or unique problems....
- Unlock geospatial platform so it can be leveraged by many
- Leverage the collective knowledge of the entire community
 - Best practices, industry tradecraft....

Elections

- Early Voting
- Election Polling Places
- Polling Wait Times
- Election Results
- Historical Election Results Gallery
- My Elected Representative

Land Records

- Tax Parcel Editing
- Data Reviewer for Parcels
- Public Land Survey Editing
- Parcel Drafter
- Community Parcels
- Value Analysis Dashboard
- My Tax Distribution
- Tax Reverted Properties
- Assessment Appeals
- Tax Parcel Viewer
- School Locator
- Residential Comp Finder
- Tax Map Book

Public Health

- Opioid Awareness Maps
- Naloxone Deployment Reporter
- Drug Activity Reporter
- Drug Drop-off Locator
- Drug Drop-off Calculator
- Health Resource Inventory
- Opioid Treatment Locator
- Pain Management Locator
- Opioid Response Dashboard
- Homeless Point-in-Time Counts
- Homeless Service Locator
- Homeless Activity Reporter

Law Enforcement

- Cell Phone Analysis
- Near Repeat Analysis
- Public Safety Incident Maps
- Field Interview Map
- Tactical Operation Planner
- Tactical Operation Dashboard
- Tactical Operation Surveillance

Fire Service

- Fire Station Wall Map
- Fire Incident Maps
- Fire Run Book
- Target Hazard Analysis
- Pre-Incident Plan Coordinator
- Pre-Incident Plan Field Inventory
- Pre-Incident Plan Dashboard
- Pre-Incident Plan Locator
- Fire Hydrant Inspection
- Fire Safety Survey
- AED Reporter
- AED Locator
- AED Inventory
- Emergency Assistance

Public Works

- Campus Place Locator
- Campus Editing
- Citizen Problem Reporter
- My Government Services
- Plans and Drawings
- Road Maintenance Agreements
- Public Parking
- Capital Project Planning
- Capital Project Tracking
- Road Closures
- Vision Zero
- Crash Analysis
- Road Network Editing
- Adopta
- Flood Planning
- SnowCOP
- Participatory Budgeting

- Sign Inventory
- Signal Inventory
- Streetlight Inventory
- Street Tree Inventory
- Bridge Inventory
- Sidewalk Inventory
- Pavement Marking Inventory
- Guardrail Inventory
- Street Furniture Inventory
- Railroad Crossing Inventory
- Mosquito Adulticide Planning
- Mosquito Field Observations
- Mosquito Health Concerns
- Mosquito Larvicide Reporting
- Mosquito Population Surveillance
- Mosquito Service Request
- Mosquito Spray Areas
- Mosquito Spray Exclusions

Planning and Development

- Address Data Management
- Data Reviewer for Addresses
- Community Addresses
- Address Field Verification
- Address Crowdsourcing
- Site Selector
- Live, Work, Locate
- Incentive Zones
- Events Calendar
- Events Permit
- Events Permit Review
- Events Site Map
- Events Coordination
- Events Map Gallery
- 3D Public Survey
- Visualize Proposed Developments
- Visibility Assessment

- Calculate Solar Radiation
- Shadow Impact Analysis
- Demolition Tracker
- Mortgage Counseling Locator
- Blight Status
- Photo Survey
- Park Locator
- Code Violation
- Public Comment
- Public Notification
- Land Use Inquiry
- Floodplain Inquiry

Entire Organization

- Administrative Area Data Management
- Local Government Basemaps
- Data Reviewer for Basemaps
- Local Government 3D Scenes
- ArcGIS Online Model Organization
- Local Government Information Model
- Service Catalog

ArcGIS Solutions

Groundbreaking and Incremental Improvements

Incremental Releases

Information Models
Custom Web Apps
Flex Widgets
Desktop Add-ins
Resource Center

Responsive Web Apps
Web App Templates
Desktop Add-ins
Solution Site

Feature Layers
ArcGIS Pro Projects
Web AppBuilder Widgets
Web App Templates
Deployment Tool

Damage Assessment
Public Notification
Crash Analysis
Utility Network Editing
Crowdsource Reporter

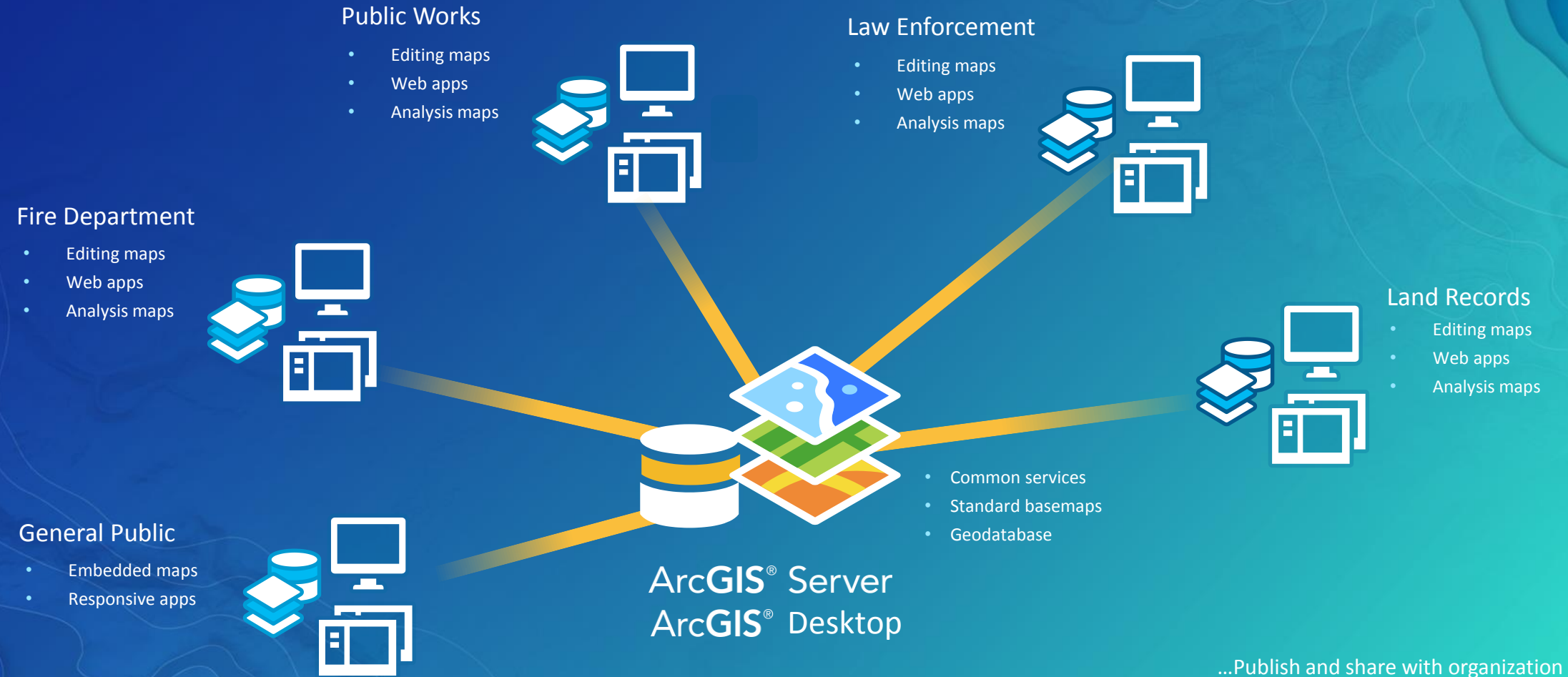
Attribute Assistant

Military Tools
Information Lookup
Address Management
Situational Awareness
Helicopter Landing
Tax Parcel Editing
Near Me Smart Editor
Environmental Impact

Continuous Improvements

Local Government Implementation

Client - Server Pattern



...Publish and share with organization

Local Government Implementation

WebGIS Pattern



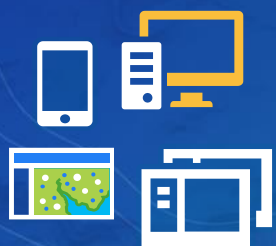
ArcGIS for Local Government

WebGIS Deployment Approach



Step 1: Configure ArcGIS Organization

- Setup organization
- Create central groups
- Register your content
- Create functional groups
- Organize user community



Step 2: Deploy ArcGIS Solution(s)

- Log in to ArcGIS Organization
- Select appropriate solution(s)
- Deploy solution
- Socialize with stakeholders
- Identify configurations
- Load sample data (if necessary)



Step 3: Configure ArcGIS Solution(s)

- Configure and brand application(s)
- Modify maps and layers
- Refine layers and tables



Step 4: Load your Data

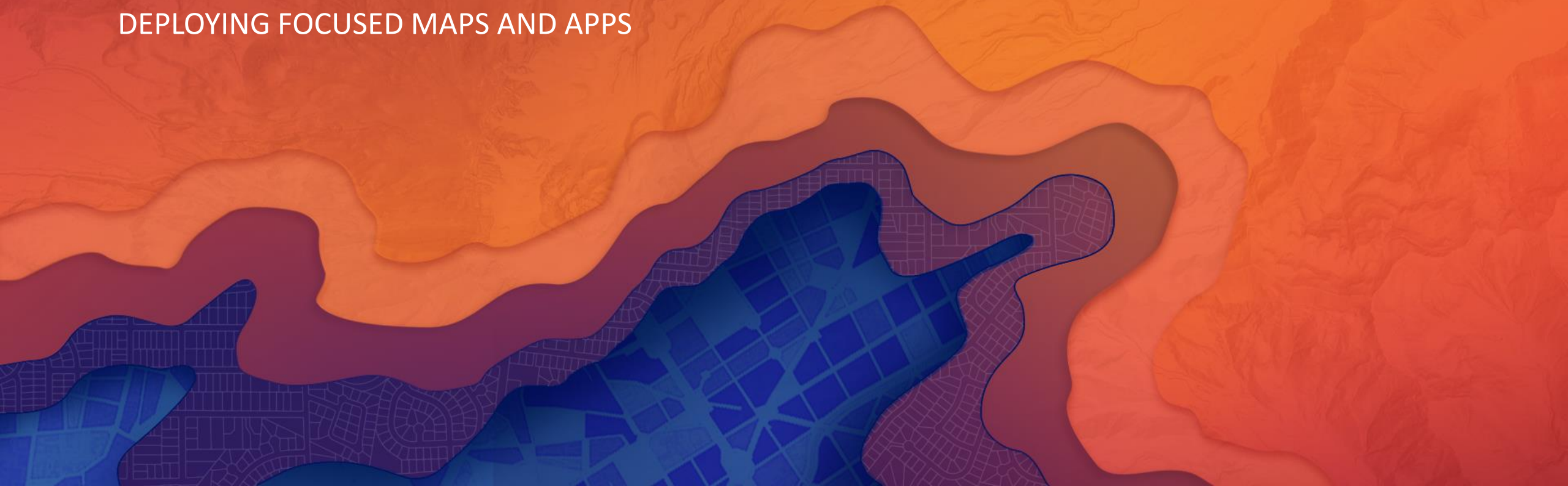
- Extract, transform, load
- Calculate values
- Share with users



...Reducing deployment time and maximizing expertise

ArcGIS for Local Government

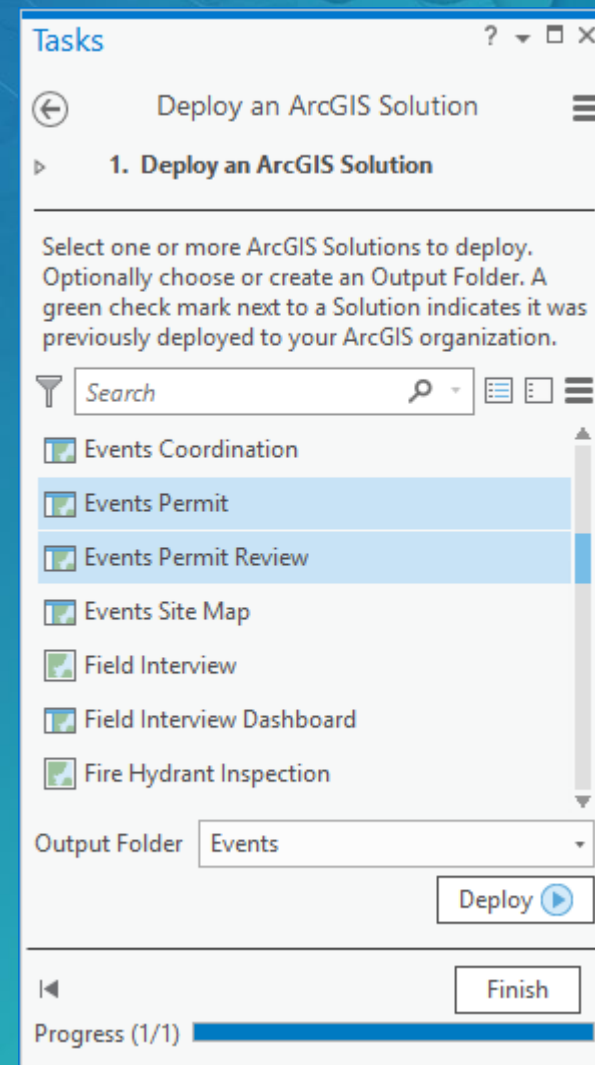
DEPLOYING FOCUSED MAPS AND APPS



Solutions Deployment Tool

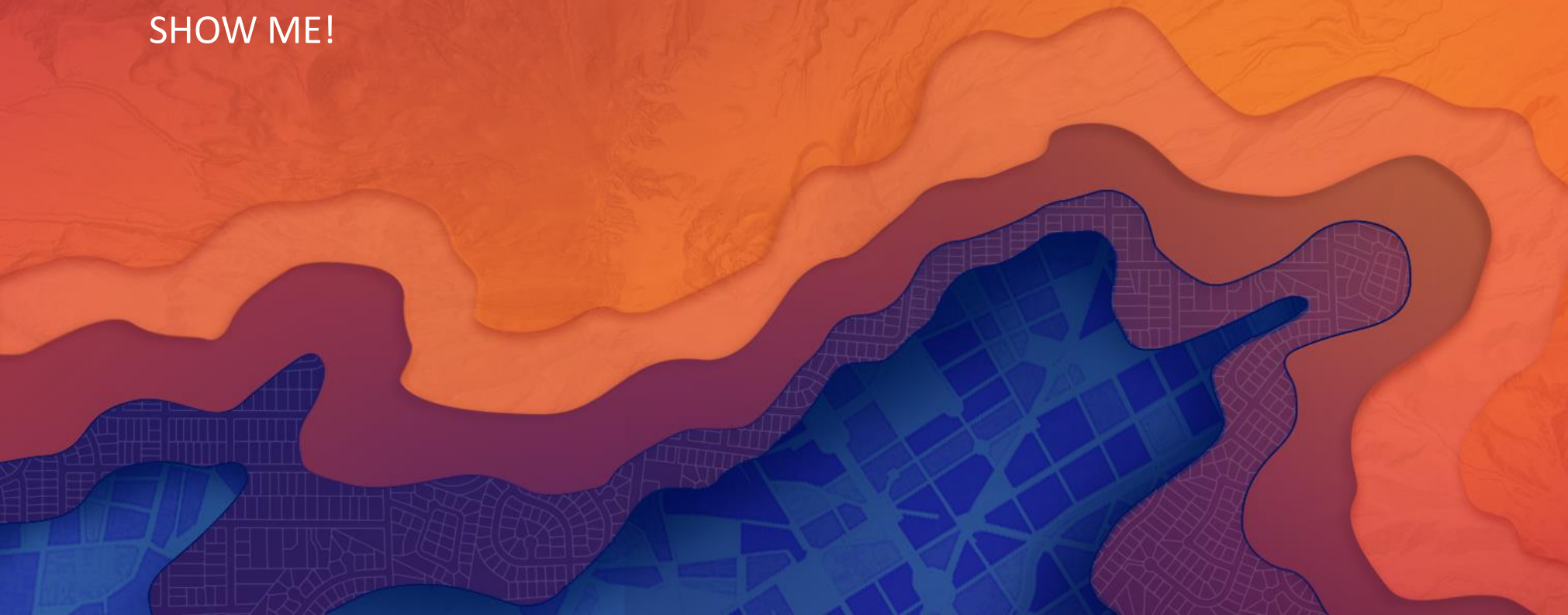
ArcGIS Pro Add-in

- Help users:
 - Discover solution offerings
 - Deploy services, maps, and configurable apps
 - Configure solution to meet specific needs in their organization
 - Add fields
 - Modify field domains
 - Load data (if required)



Deploying Focused Maps and Apps

SHOW ME!



ArcGIS for Local Government

Client - Server Deployment Approach



Step 1: Configure ArcGIS Organization

- Setup organization
- Create central groups
- Register your content
- Create functional groups
- Organize user community



Step 2: Deploy ArcGIS Solution(s)

- Select appropriate solution(s)
- Download
- Socialize with stakeholders
- Identify configurations
- Load sample data (if necessary)



Step 3: Configure ArcGIS Solution(s)

- Refine information model and layers
- Set spatial reference
- Modify maps and layers
- Install add-ins or distribute tools
- Configure and brand application(s)
- Deploy on your infrastructure



Step 4: Load your Data

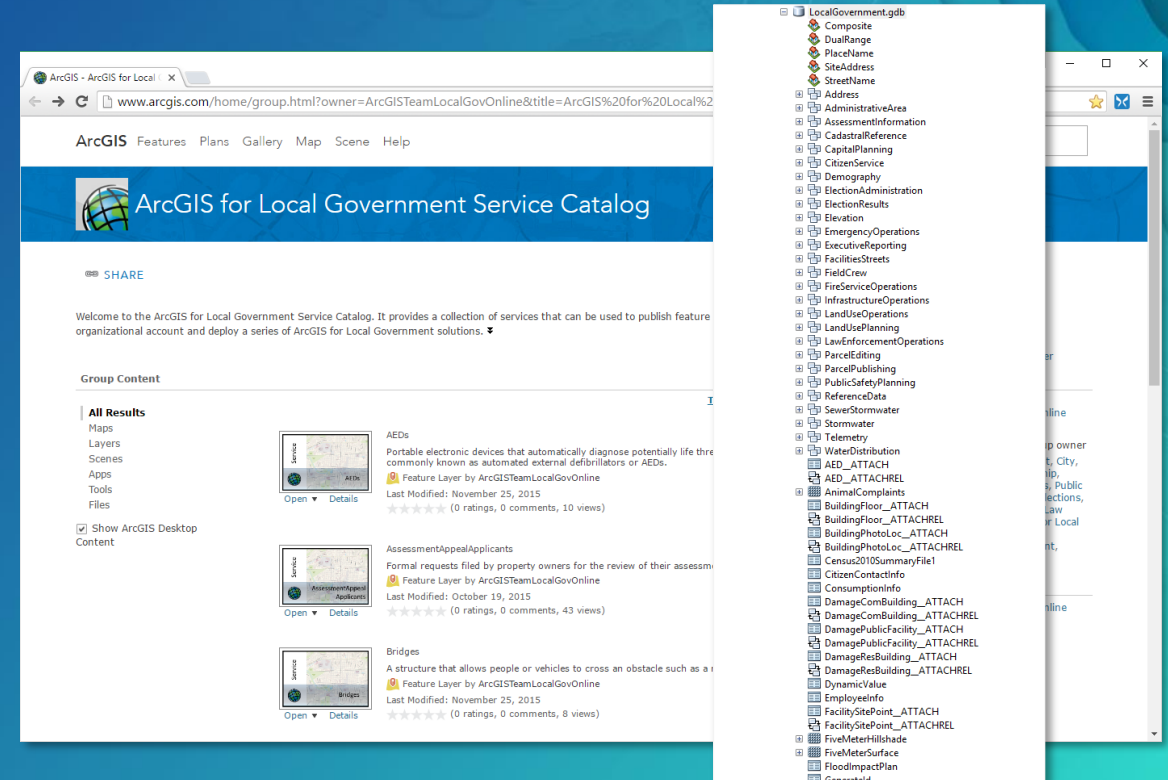
- Extract, transform, load
- Calculate values
- Register with ArcGIS Organization
- Share with users



...Reducing deployment time and maximizing expertise

Local Government Information Model

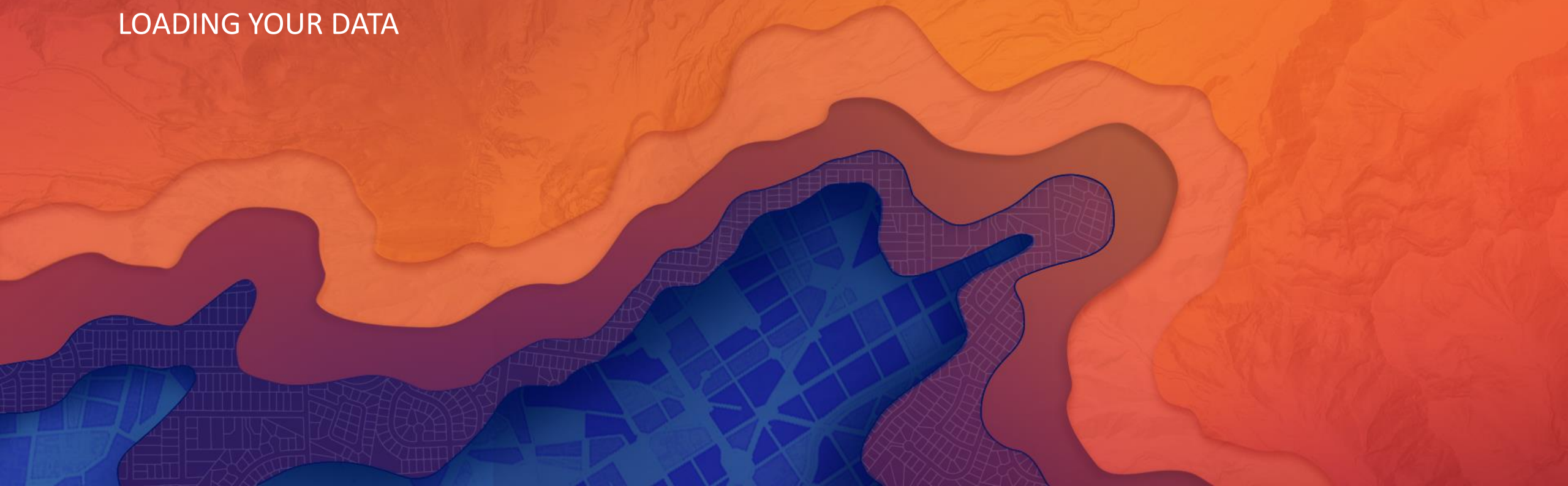
- Geodatabase schema AND service catalog
- Supports maps and apps
 - Rich symbols and cartography
 - Easy to adopt and extend
- Getting started
 - Download layer or GDB schema
 - Review data dictionary
 - Configure domains, field alias, add fields
 - Set spatial reference
 - Deploy empty GDB schema
- Tip - Xray for ArcCatalog



Start with the layer and field aliases and work from there....

ArcGIS for Local Government

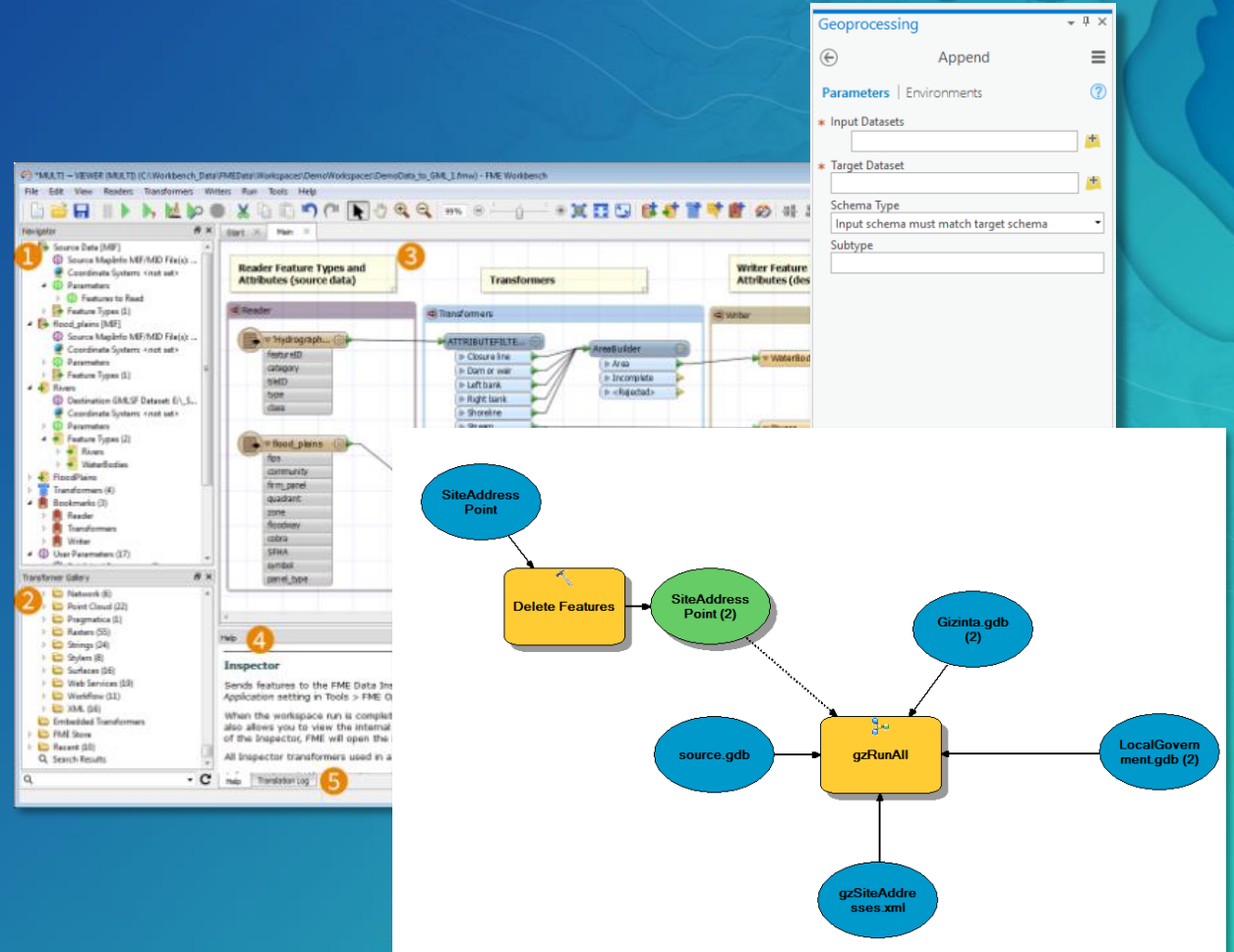
LOADING YOUR DATA



Load your data

Lots of options for you

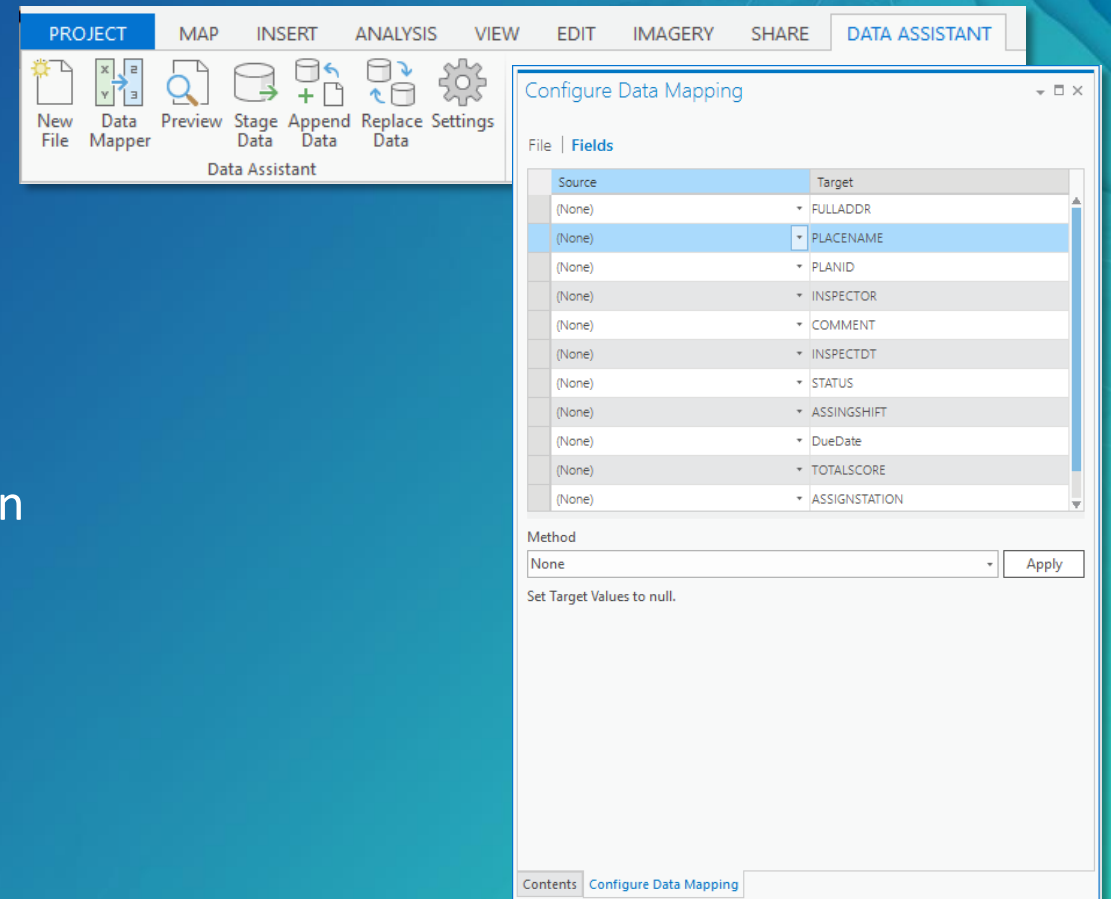
- COTS ArcGIS Tools
 - Append tool (ArcGIS Pro)
 - Data Assistant
 - Data Interoperability Extension
- Third-party products
 - Safe FME
- Python Scripts and Models
 - Gizinta



Format of your source data will dictate which tool is appropriate

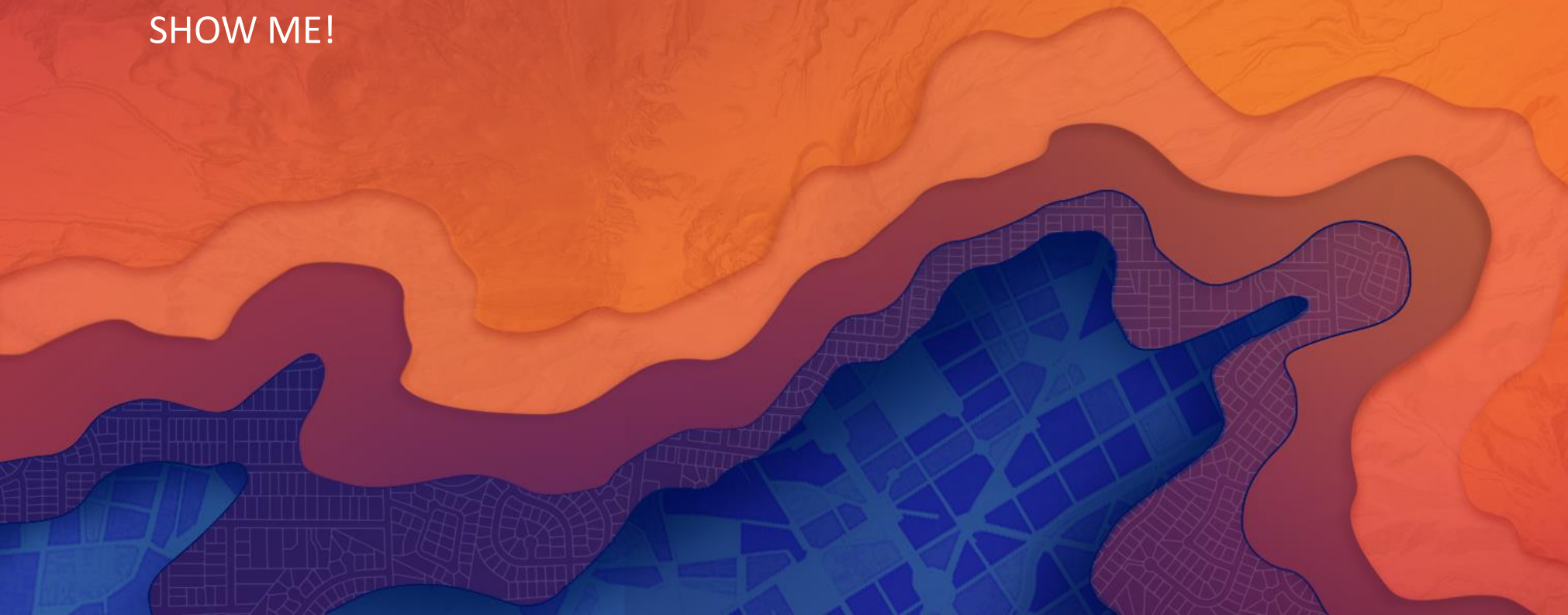
Data Assistant

- ArcGIS Pro Add-in that simplifies data movement
 - Extract
 - Transform
 - Load
 - Repeat...
- Works with feature layers and feature classes
- Can preview results
- Originally designed to help with data aggregation
- Delivered with existing solutions
 - Community Addresses
 - Community Parcels



Loading Your Data

SHOW ME!

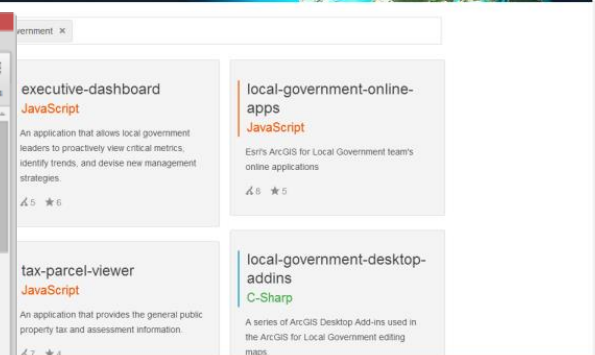
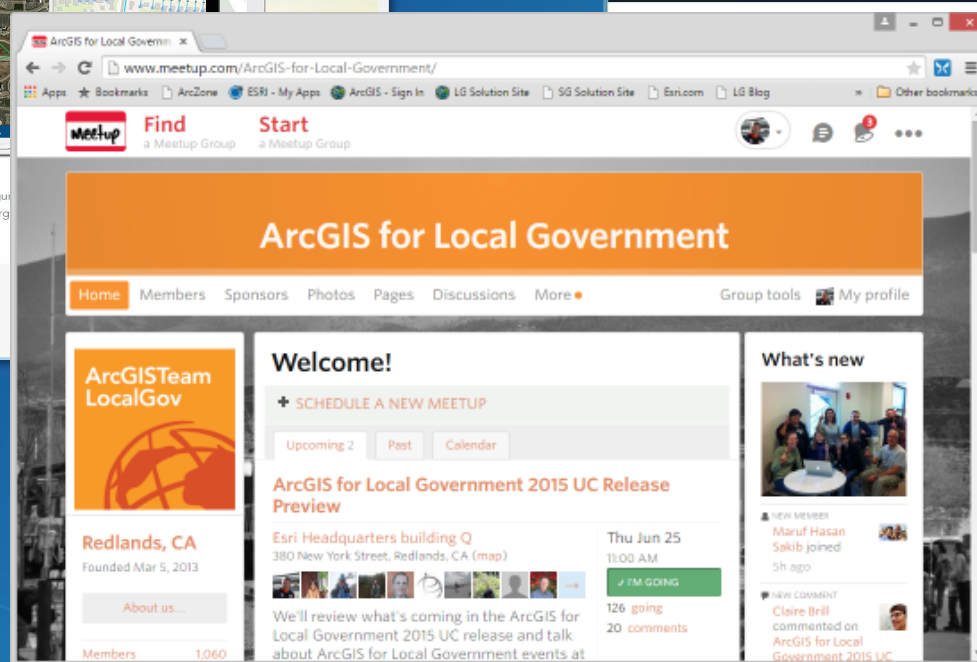
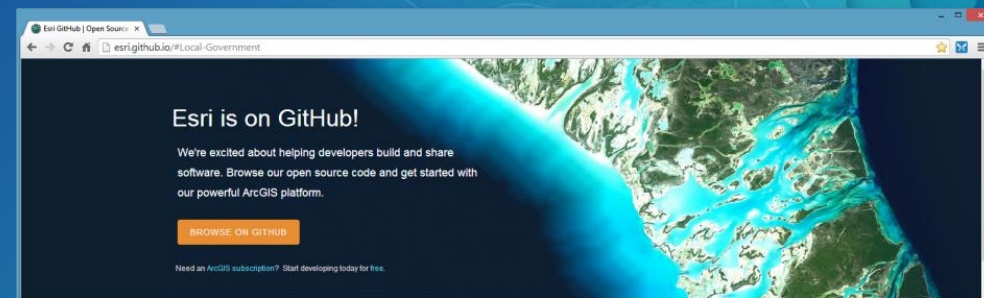
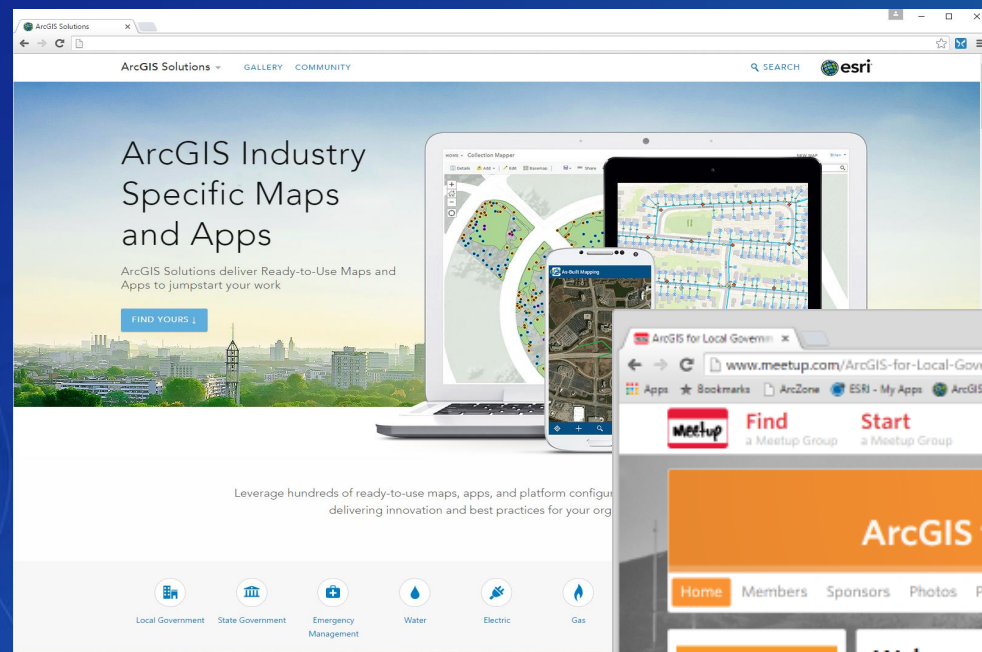


Closing Thoughts

- Your Local Government GIS implementation is evolving
- Focus on the business needs of your organization
- Leverage your ArcGIS Organization and Solutions Deployment Tool
- Embrace new ArcGIS capabilities
- Don't hesitate to ask for help from Esri, Peers, Partners

Join the Community

It's not just about the technology



UC Events

- ArcGIS for Local Government Sessions
 - Ten tech workshops
 - Thirteen demo theatre sessions
- Special Interest Group
 - Wednesday lunch
- State and Local Government Social
- Solution Island
 - Focused conversations / support



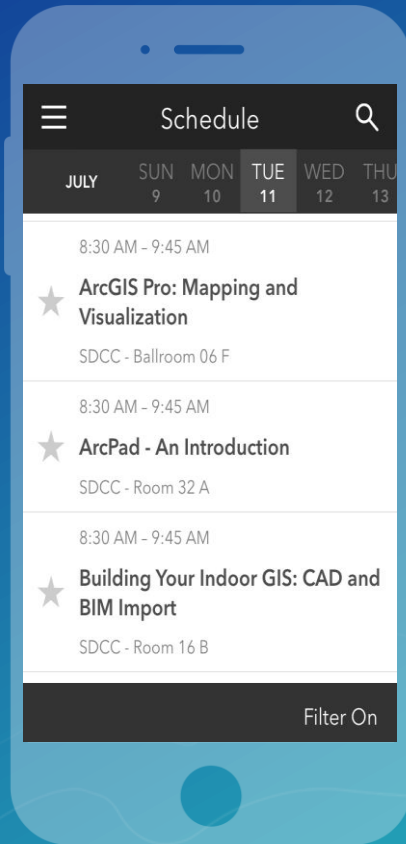
Search for: "ArcGIS for Local Government"
<http://www.esri.com/events/user-conference/agenda>

Please Take Our Survey on the Esri Events App!

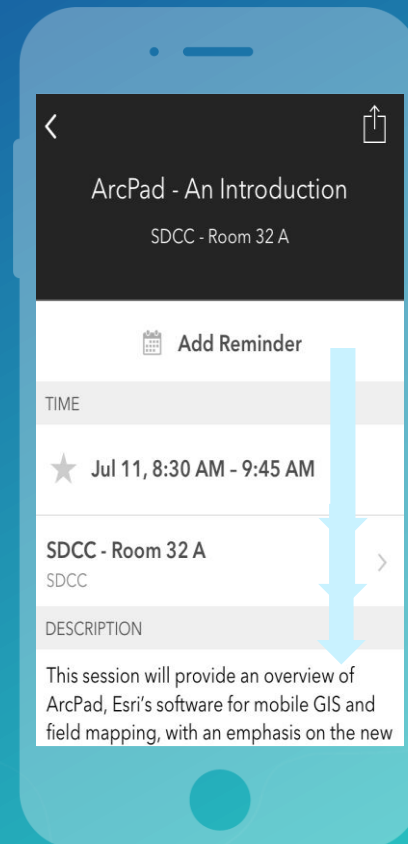
Download the Esri Events app and find your event



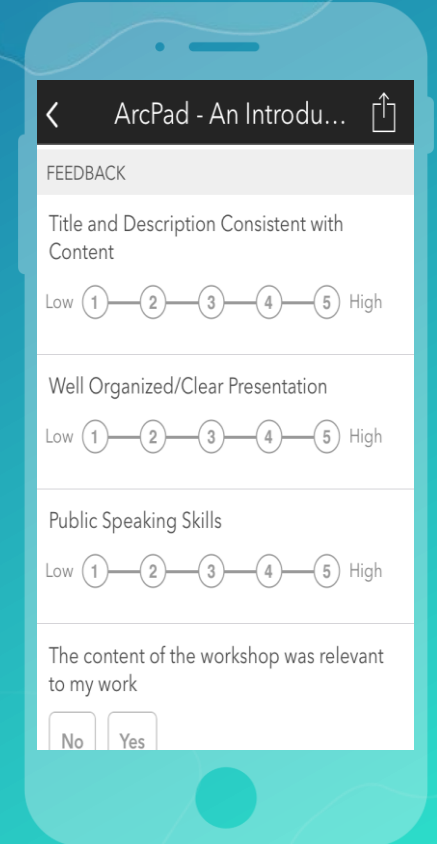
Select the session you attended



Scroll down to find the survey



Complete Answers and Select "Submit"



Thank you

Be innovative, aware, and know you are not alone

 <http://solutions.arcgis.com>

 <http://meetup.com/ArcGIS-for-Local-Government/>

 @ArcGISLocalGov

 <http://esri.github.com>



esri

THE
SCIENCE
OF
WHERE