

ArcGIS for Environment and Natural Resources

Matt Bullock

Nikki Golding

Agenda

- Introduction
- Solution Offering
- What's Next
- Your Feedback

ArcGIS as a Platform

Simple, Open, and Configurable



Making Mapping and GIS
Available Across Your Organization

Transforming the Role of GIS

EXTENDING THE PLATFORM WITH SOLUTIONS

Ready to use workflows and apps that make implementation easier and sustainable.



ArcGIS for State Government

Our Mission ▶ **To help you...**



State Government Solutions

Fish & Wildlife	Environment and Natural Resources	Health	Economic Development	Transportation	Secretary of State	Entire Organization
Hunting License Locator	Permit Inspection	Birth Outcome Analysis	● Live, Work, Locate	Road Closures	● Election Polling Places	Community Parcels
Water Access Locator	Permit Status	Birth Outcome Journal	Incentive Zones	Railroad Inspection	● Early Voting	Community Addresses
Wildlife Management Area Locator	Park & Recreation Locator	My Health Services	Site Selector	Bridge Inventory	● My Elected Representative	Service Catalog
● Water Quality Status	Trail Locator	Restaurant Inspections	Event Locator	Streetlight Inventory	● Election Results	ArcGIS for State Government Model Organization
● Water Quality Dashboard	● Water Quality Status	Restaurant Inspection Results	● Event Management	Snow COP	● Historical Elections Results	Map and App Gallery App
● Water Quality Inspections	● Water Quality Inspections	● Restaurant Inspection Dashboard	● Property Listing/Reviewer	Pavement Marking Inventory		Crowdsource Reporter
Citizen Science Reporter	● Water Quality Dashboard	Water Quality Inspection		Street Sign Inventory		Crowdsource Manager
Citizen Science Manager	ArcGIS Online for Environment & Natural Resources	Water Quality Status		Traffic Signal Inventory		
● Wildlife Photo Survey	Environment Impact Polling	ArcGIS Online for State Government – Health		Guardrail Inventory	● Crash Analysis	
● Environmental Screening/Impact	Public Land Survey Editing			Crash Analysis Journal		
	● Environmental Screening			Transportation 511		
	● Environmental Analysis					
	● Permit Dashboard					

Organizations with a common mission

- Management and protection of natural resources
- Land management and recreation
- Ecosystem restoration
- Species and habitat mapping / conservation
- Public engagement



Who are your stakeholders?

How can we enable them to use GIS to do their job?

Field Staff

Program Staff

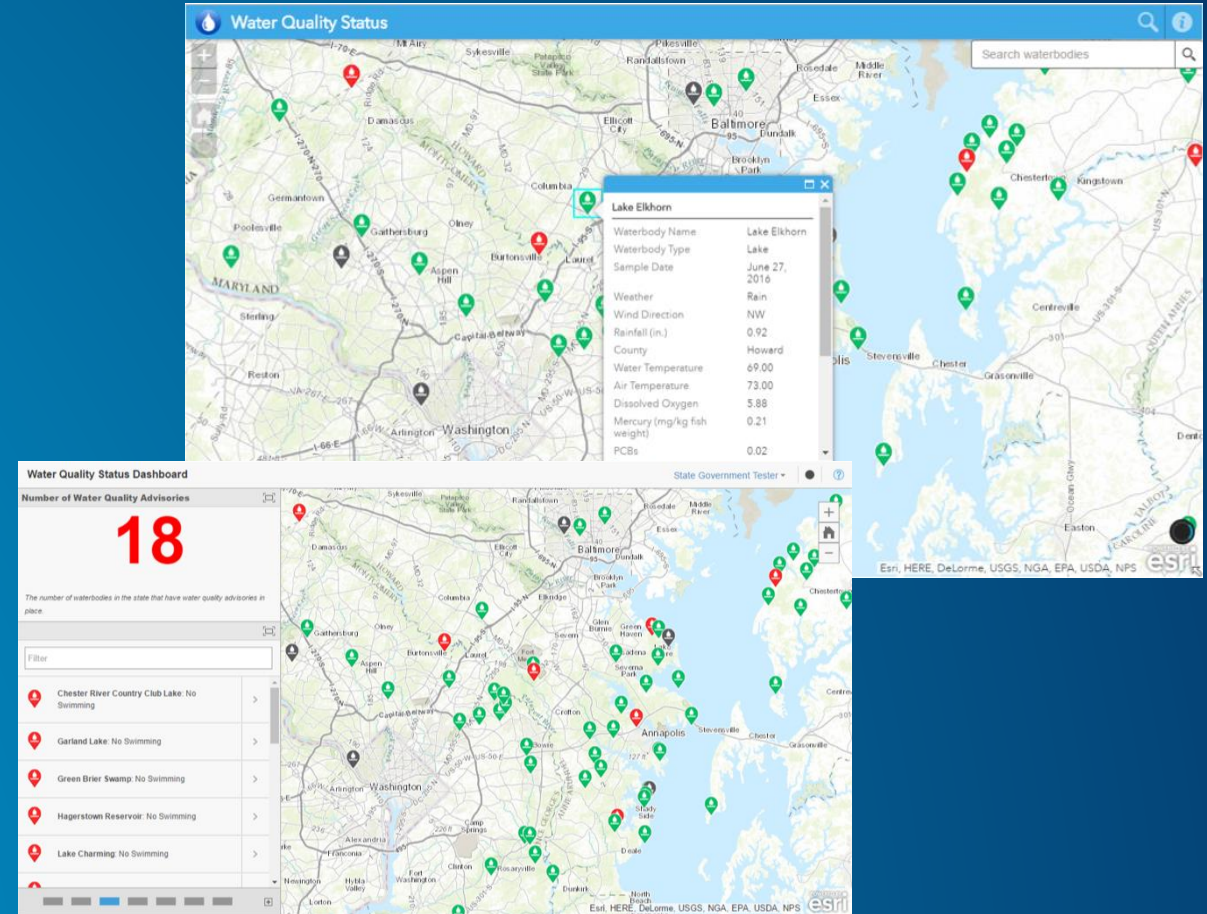
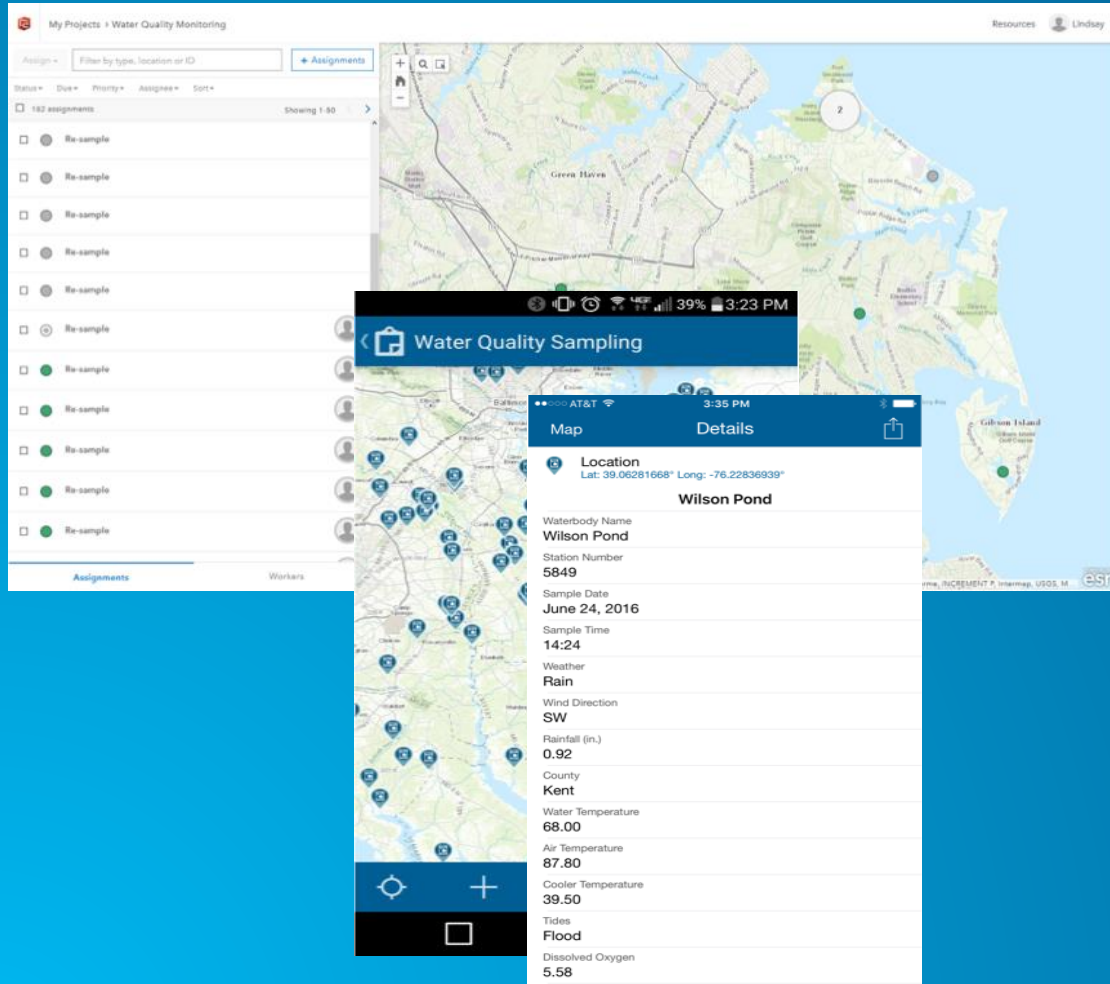
Director/Executives

Citizens

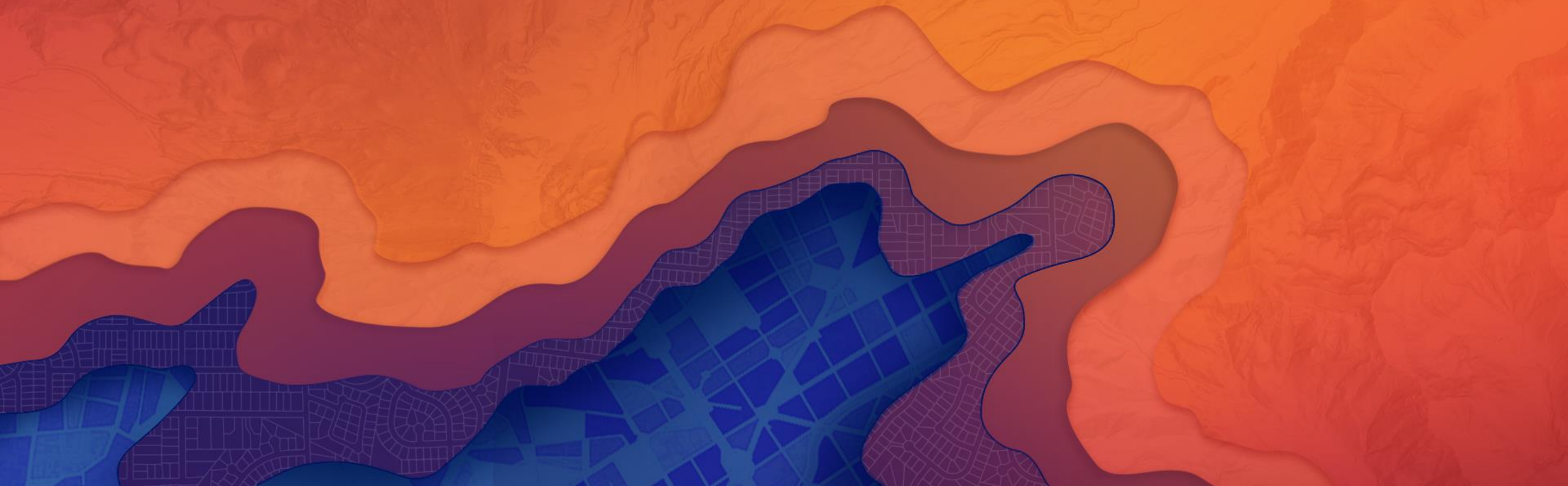


Water Quality Assessment

A collection of applications to support monitoring and evaluation of water bodies



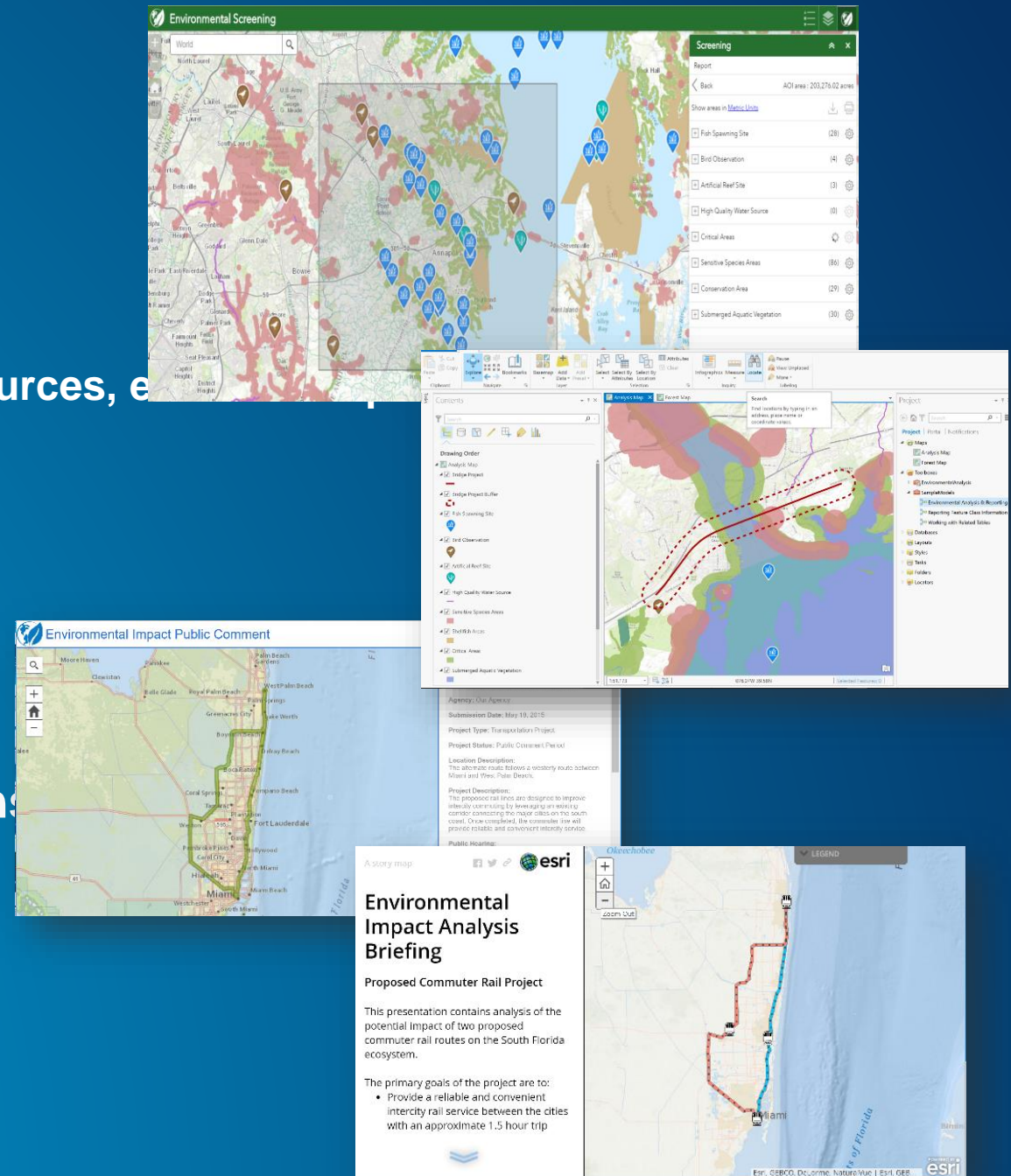
Demo



Environmental Impact

Gain Understanding Through Analysis

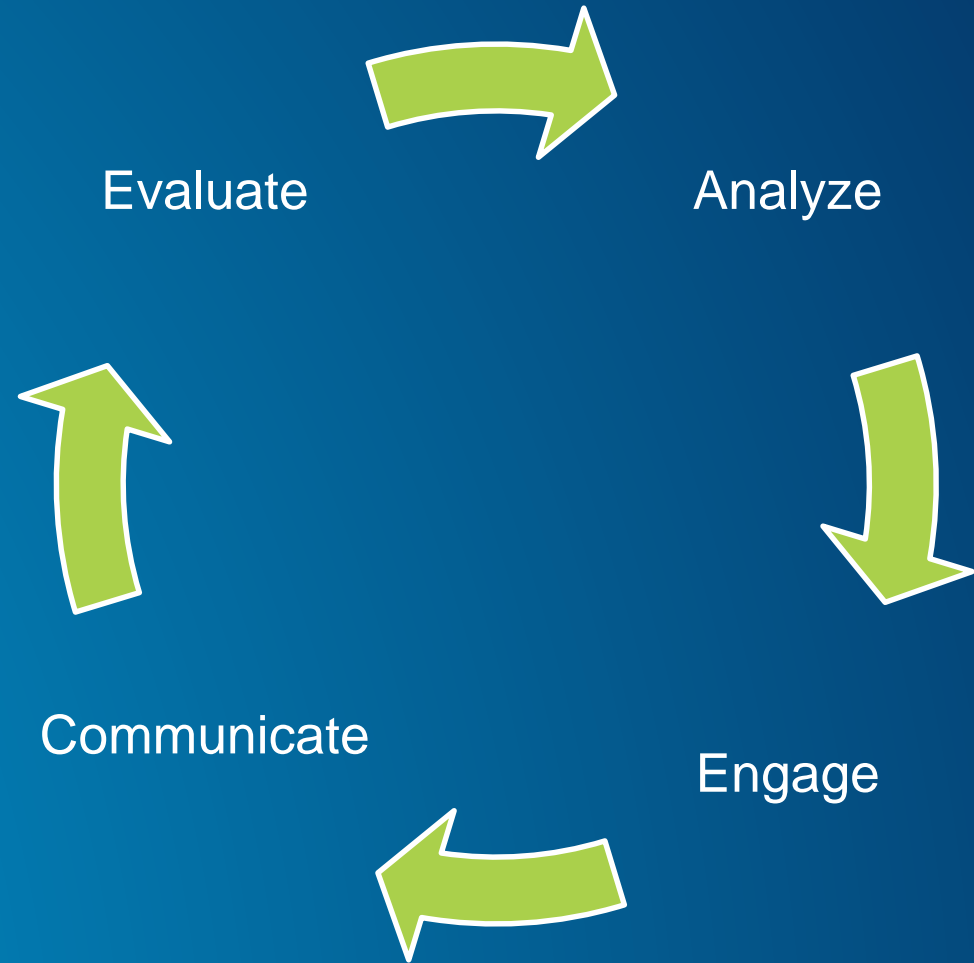
- Evaluate potential implications
 - Endangered species, protected lands, water resources, etc.
- Iterative evaluation of projects and boundaries
- Generate summary information for project
- Engage the community for feedback
- Utilize authoritative sources across organizations
- Facilitate communication with stakeholders



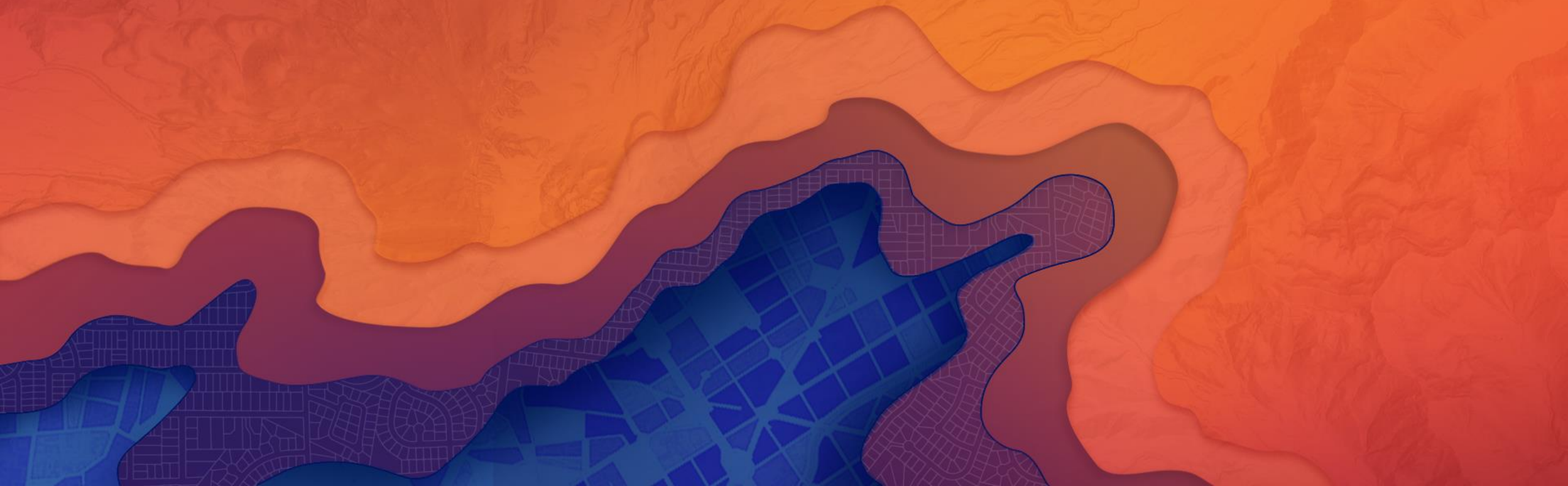
Driving Decisions

Provide insight and clarity through analysis

- **Evaluate**
 - Environmental Screening
- **Analyze**
 - Environmental Analysis
- **Engage**
 - Environmental Impact Polling
- **Communicate**
 - Environmental Impact Briefing

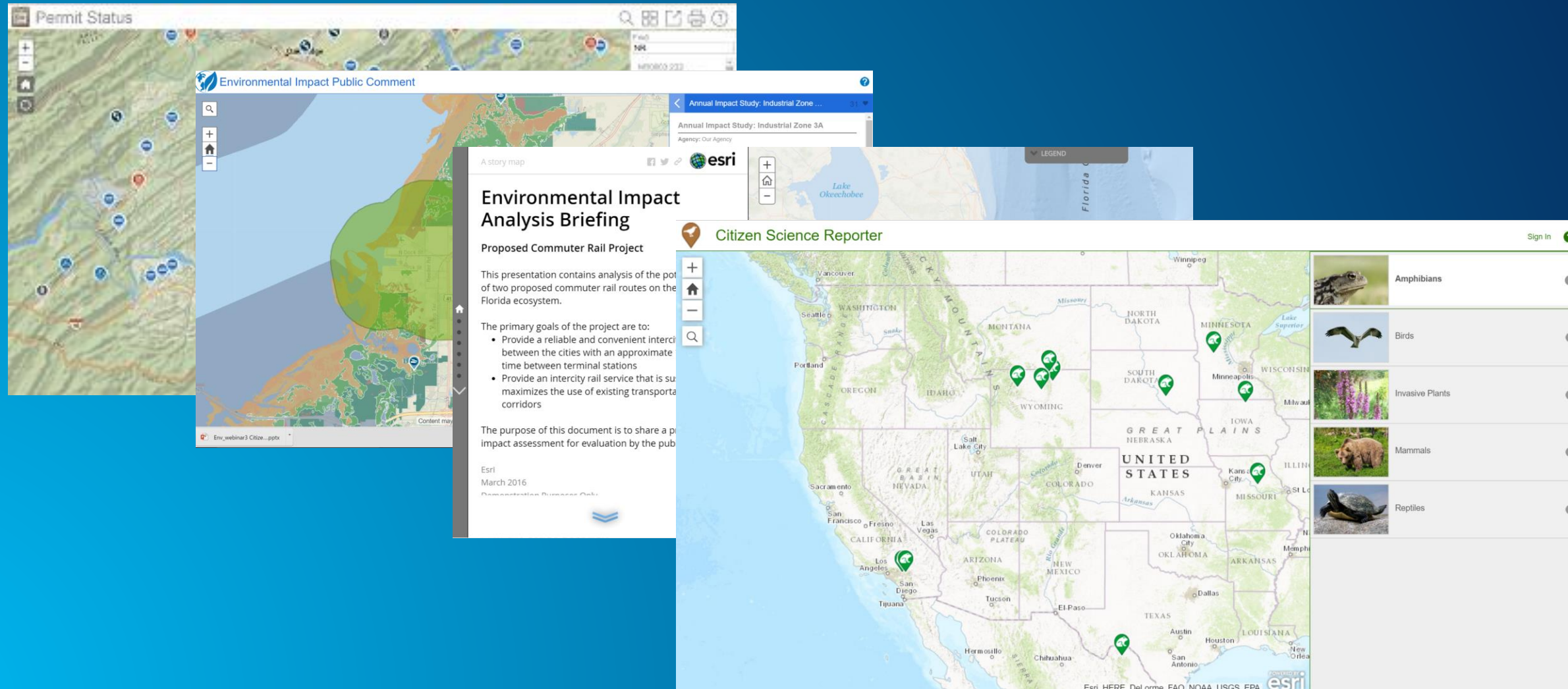


Demo

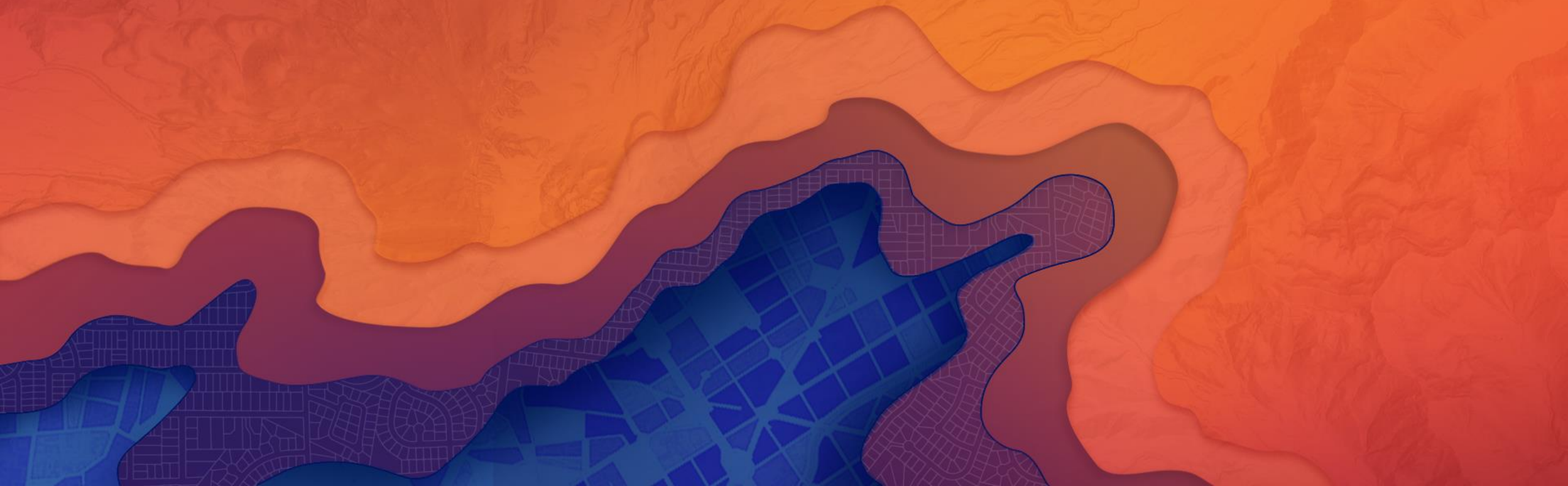


Citizen Engagement Solutions

A collection of applications to support your constituents



Demo

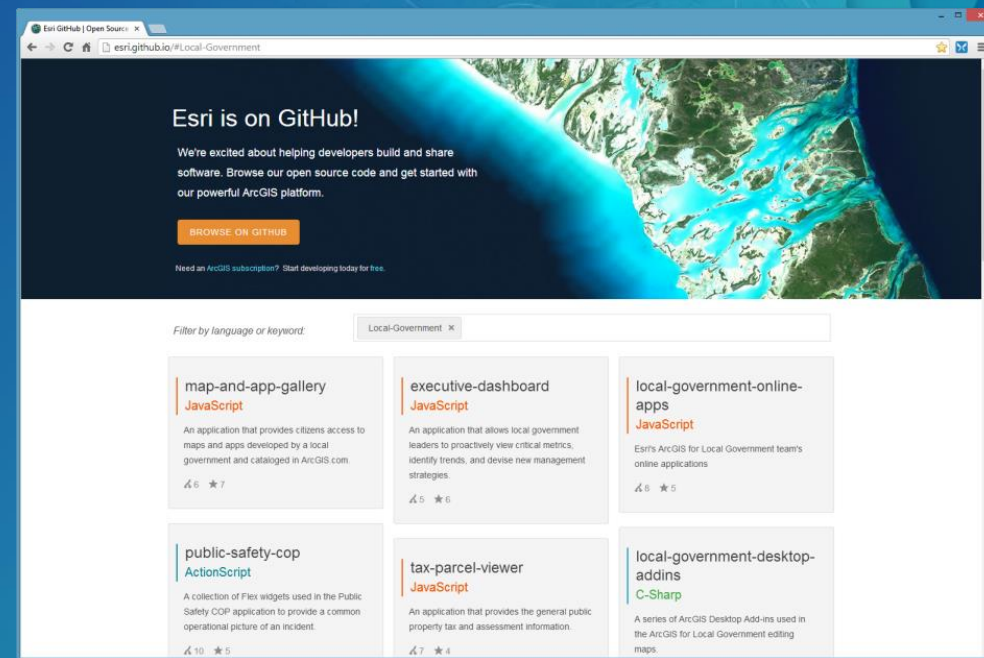
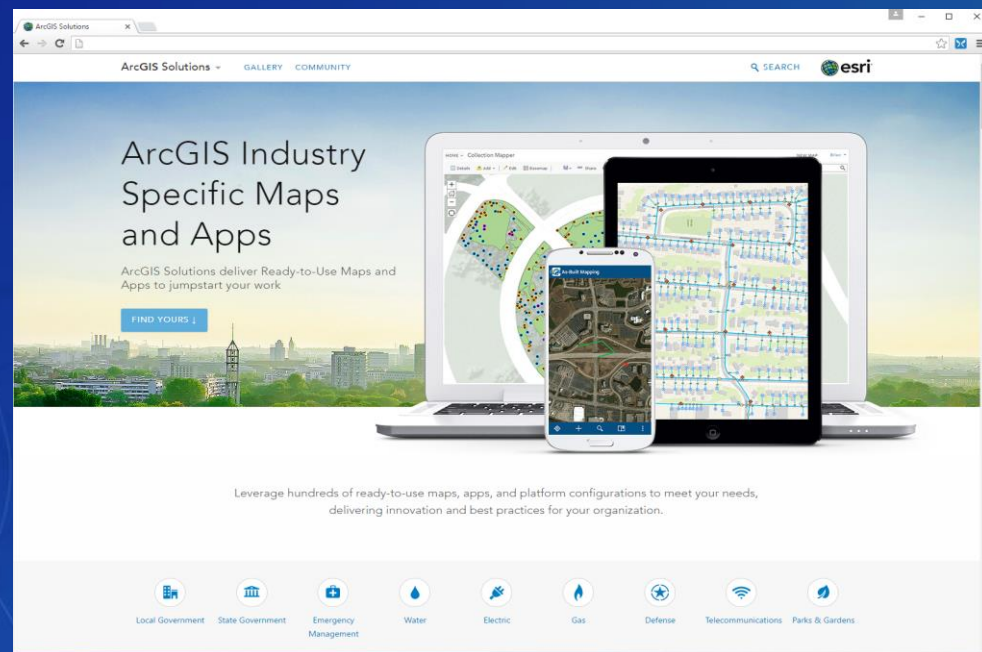


2017 Priorities

- Modernize solutions
 - ArcGISPro, WebApp Builder, 4.x API, Field Workflows
- UC Release
 - Environmental Screening, Transportation 511 updates, Field Workflows, Printing Dijit
- Post UC
 - Executive Dashboard, Environment, Agriculture, Field Workflows, Hub

Join the Community

It's not just about the technology



Closing

- Deliver solutions that enables success
 - Easier to deploy and sustain
- Evolve and grow the collection of apps
- Develop a community of users
- Provide a platform for partners to deploy their solutions

UC Events

- ArcGIS for State Government Sessions
 - Six technical workshops
 - Nine demo theatre sessions (Theater 2)
- State and Local Government Social
- Solution Island
 - Focused conversations / support

The logo features the letters 'UC' in a large, bold, white sans-serif font, centered within a dark purple rectangular box.

Esri User Conference

Applying The Science of Where

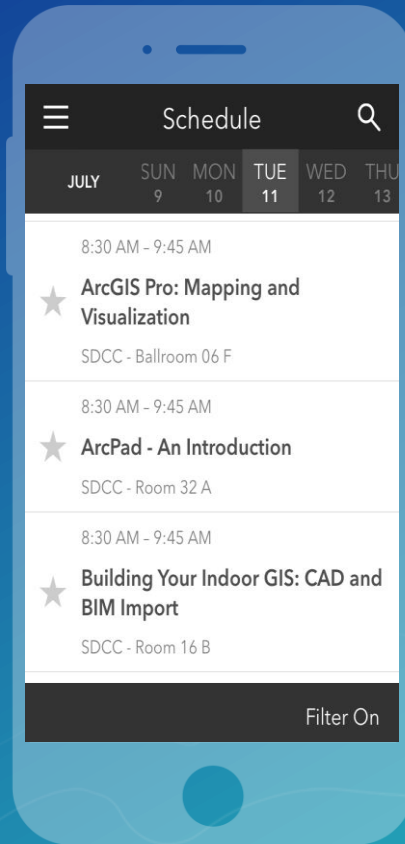
July 10 - 14, 2017 | San Diego, California

Please Take Our Survey on the Esri Events App!

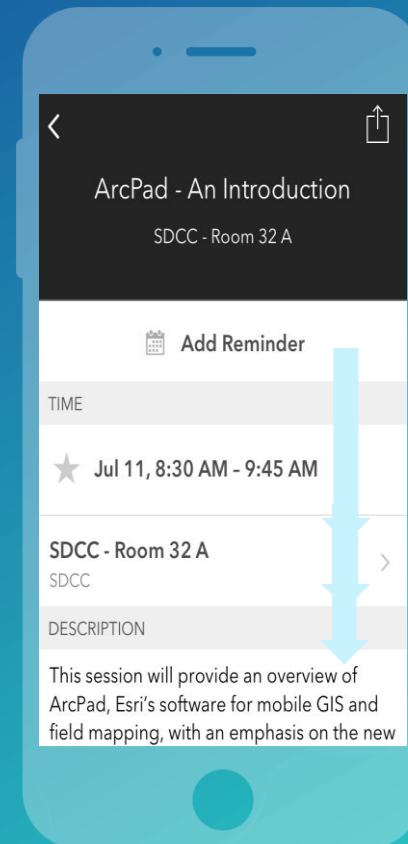
Download the Esri Events app and find your event



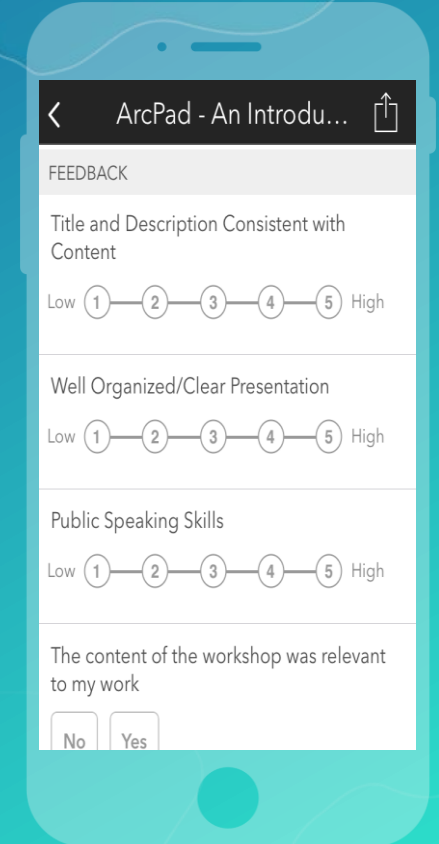
Select the session you attended



Scroll down to find the survey



Complete Answers and Select "Submit"



Thank you

Be innovative, aware, and know you are not alone

-  <http://solutions.arcgis.com/#State-Government>
-  <https://www.meetup.com/ArcGIS-for-State-Government/>
-  [@ArcGISStateGov](https://twitter.com/ArcGISStateGov)
-  <http://esri.github.com>



esri

THE
SCIENCE
OF
WHERE