

# Public Works Maps and Apps for Local Governments

CHRIS FOX  
SCOTT OPPMANN

# Agenda

- Introduction
- Solution Offering
- What's Next
- Your Feedback

# ArcGIS as a Platform

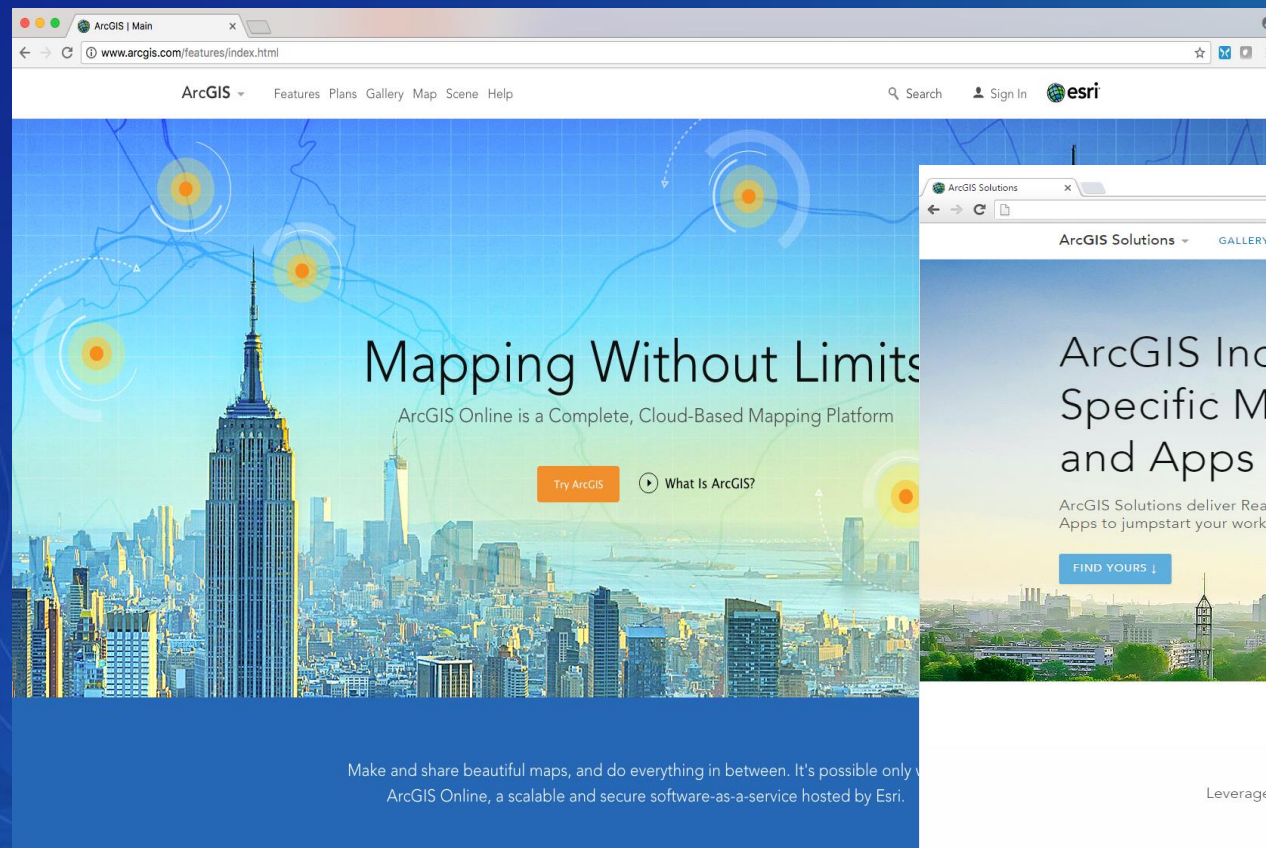
Simple, Open, and Configurable



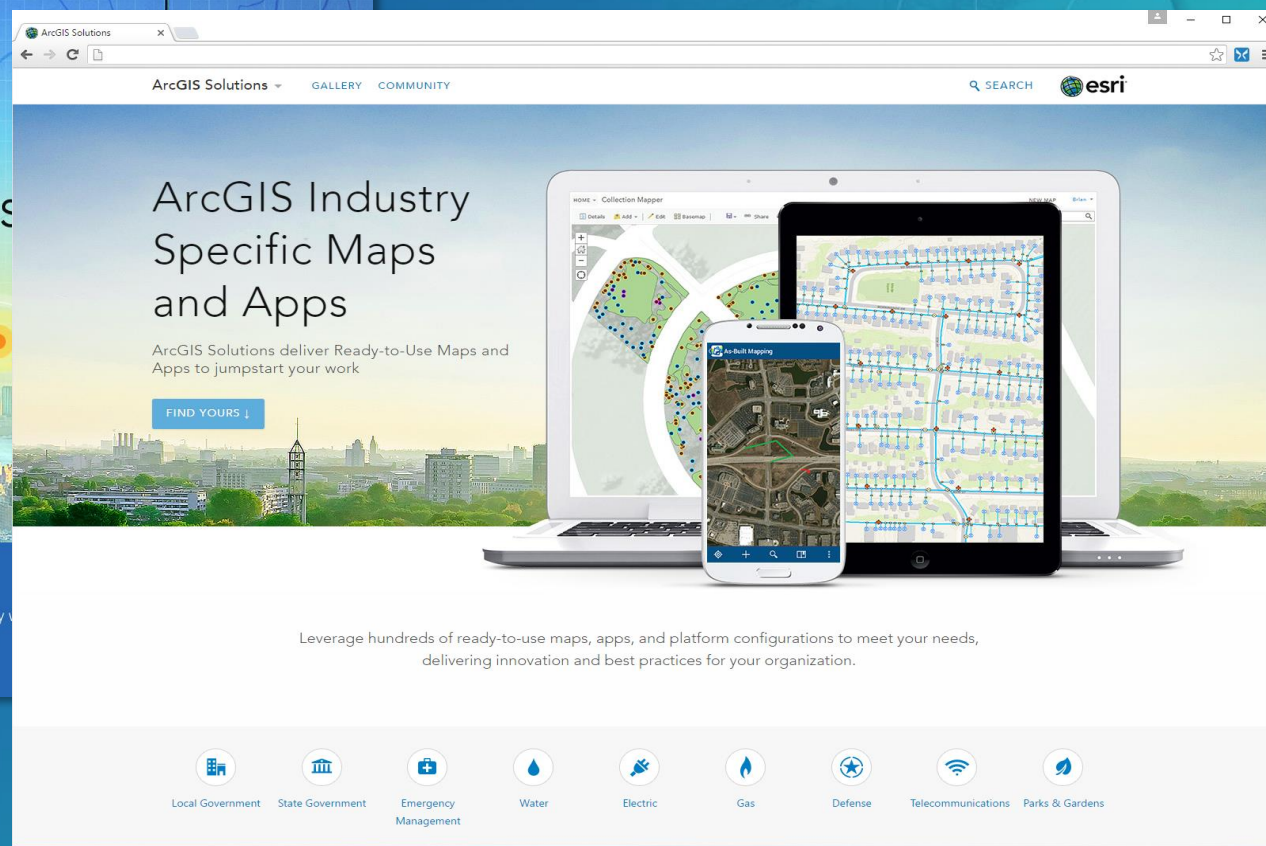
Making Mapping and GIS  
Available Across Your Organization

Transforming the Role of GIS

# Turning Point



ArcGIS Online

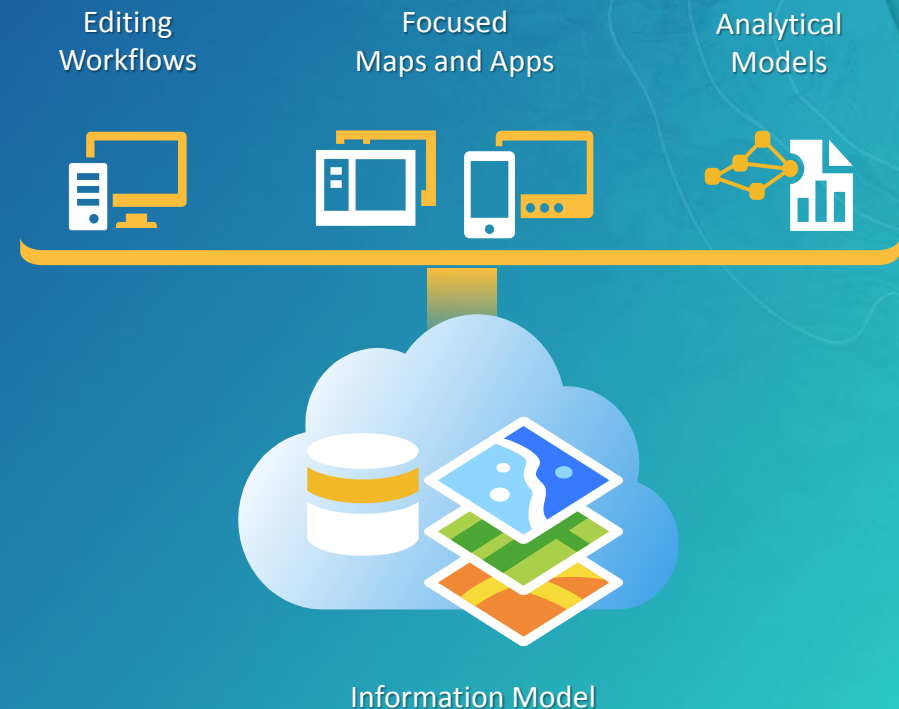


Solutions

# ArcGIS for Local Government

Solutions for Esri's government customers

- Collection of useful maps and apps
  - Configurable and extensible
  - Freely available and fully supported
- Community of users
  - Best Practices / Implementation Support
- Network of Esri Services and Partner offerings
  - Help users implement, sustain and enhance



.....Available on-premise or in the cloud

# Our Mission

- Deliver maps and applications quickly throughout their organization
  - Roadmap for standard capabilities, improve service delivery, expand reach, innovation....
- Stay current with future releases / avoid legacy technology
  - Save time and money, leverage new ArcGIS offerings, focus on complex or unique problems....
- Unlock geospatial platform so it can be leveraged by many
- Leverage the collective knowledge of the entire community
  - Best practices, industry tradecraft....

Elections

- Early Voting
- Election Polling Places
- Polling Wait Times
- Election Results
- Historical Election Results Gallery
- My Elected Representative

Land Records

- Tax Parcel Editing
- Data Reviewer for Parcels
- Public Land Survey Editing
- Parcel Drafter
- Community Parcels
- Value Analysis Dashboard
- My Tax Distribution
- Tax Reverted Properties
- Assessment Appeals
- Tax Parcel Viewer
- School Locator
- Residential Comp Finder
- Tax Map Book

Public Health

- Opioid Awareness Maps
- Naloxone Deployment Reporter
- Drug Activity Reporter
- Drug Drop-off Locator
- Drug Drop-off Calculator
- Health Resource Inventory
- Opioid Treatment Locator
- Pain Management Locator
- Opioid Response Dashboard
- Homeless Point-in-Time Counts
- Homeless Service Locator
- Homeless Activity Reporter

Law Enforcement

- Cell Phone Analysis
- Near Repeat Analysis
- Public Safety Incident Maps
- Field Interview Map
- Tactical Operation Planner
- Tactical Operation Dashboard
- Tactical Operation Surveillance

Fire Service

- Fire Station Wall Map
- Fire Incident Maps
- Fire Run Book
- Target Hazard Analysis
- Pre-Incident Plan Coordinator
- Pre-Incident Plan Field Inventory
- Pre-Incident Plan Dashboard
- Pre-Incident Plan Locator
- Fire Hydrant Inspection
- Fire Safety Survey
- AED Reporter
- AED Locator
- AED Inventory
- Emergency Assistance

Public Works

Campus Place Locator

Campus Editing

Citizen Problem Reporter

My Government Services

Plans and Drawings

Road Maintenance Agreements

Public Parking

Capital Project Planning

Capital Project Tracking

Road Closures

Vision Zero

Crash Analysis

Road Network Editing

Adopta

Flood Planning

SnowCOP

Participatory Budgeting

Sign Inventory

Signal Inventory

Streetlight Inventory

Street Tree Inventory

Bridge Inventory

Sidewalk Inventory

Pavement Marking Inventory

Guardrail Inventory

Street Furniture Inventory

Railroad Crossing Inventory

Mosquito Adulticide Planning

Mosquito Field Observations

Mosquito Health Concerns

Mosquito Larvicide Reporting

Mosquito Population Surveillance

Mosquito Service Request

Mosquito Spray Areas

Mosquito Spray Exclusions

Planning and Development

- Address Data Management
- Data Reviewer for Addresses
- Community Addresses
- Address Field Verification
- Address Crowdsourcing
- Site Selector
- Live, Work, Locate
- Incentive Zones
- Events Calendar
- Events Permit
- Events Permit Review
- Events Site Map
- Events Coordination
- Events Map Gallery
- 3D Public Survey
- Visualize Proposed Developments
- Visibility Assessment

- Calculate Solar Radiation
- Shadow Impact Analysis
- Demolition Tracker
- Mortgage Counseling Locator
- Blight Status
- Photo Survey
- Park Locator
- Code Violation
- Public Comment
- Public Notification
- Land Use Inquiry
- Floodplain Inquiry

Entire Organization

- Administrative Area Data Management
- Local Government Basemaps
- Data Reviewer for Basemaps
- Local Government 3D Scenes
- ArcGIS Online Model Organization
- Local Government Information Model
- Service Catalog

# Today's Public Works Business Requirements

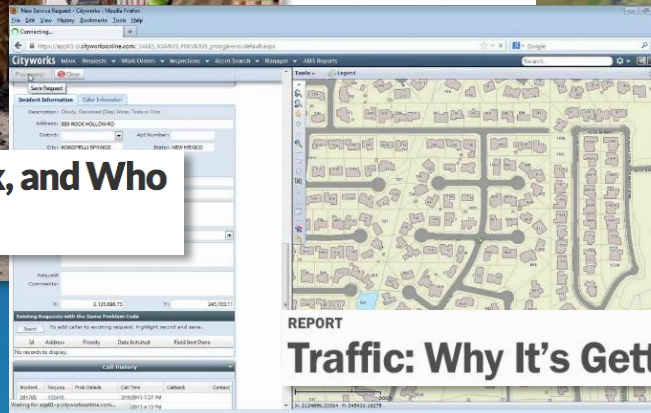
Expectations and business requirements have changed

- Historically, CAD and “paper” used to support maintenance and construction
- But, today's business environment have changed these requirements.....

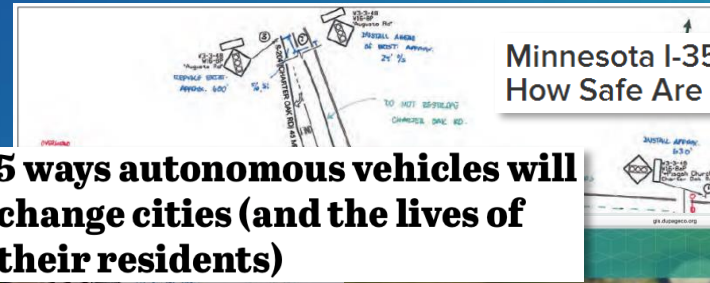
## L.A.'s New Mobility Plan Envisions a Different Kind of City



## America's Aging Infrastructure: What to Fix, and Who Will Pay?



## 5 ways autonomous vehicles will change cities (and the lives of their residents)



## Minnesota I-35 Bridge Collapse Anniversary: How Safe Are Drivers Now?



## Traffic: Why It's Getting Worse, What Government Can Do

*City of*



Tampa Bay Water  
City of Tampa  
Sun Tower  
USF Tower  
Trolley  
River

# Our Goals

Expand the use of location-based data in public works organizations

- Develop focused maps and apps that address key workflows in:
  - Mapping and Design
  - Transportation Planning
  - Right of Way Operations
  - Parking
  - Citizen Services
- Leverage ArcGIS Online as a platform for public works information and workflows
- Organize a community of users to guide the solution offerings
  - Started with City of Tampa, FL
  - Evolving with City of Austin, TX

# Public Works Maps and Apps

## Transportation Planning

Public Parking  
Sidewalk Inventory  
Signal Inventory  
Road Closures  
Vision Zero  
Crash Analysis  
Road Closures

## Facilities Management

Campus Place Locator  
Campus Editing

## Right of Way Operations

Road Maintenance Agreements  
Sign Inventory  
Streetlight Inventory  
Street Tree Inventory  
Bridge Inventory  
Pavement Marking Inventory  
Guardrail Inventory  
Street Furniture Inventory  
Railroad Crossing Inventory  
SnowCOP  
Flood Planning

## Mapping and Design

Road Network Editing  
Administrative Area  
Data Management  
Plans and Drawings  
Capital Project Planning  
Capital Project Tracking

## Community Events

Events Calendar  
Events Coordination  
Events Map Gallery  
Events Permit  
Events Permit Review  
Events Site Map

## Citizen Services

Citizen Problem Reporter  
My Government Services  
Public Comment  
Park Locator  
Adopta  
Participatory Budgeting

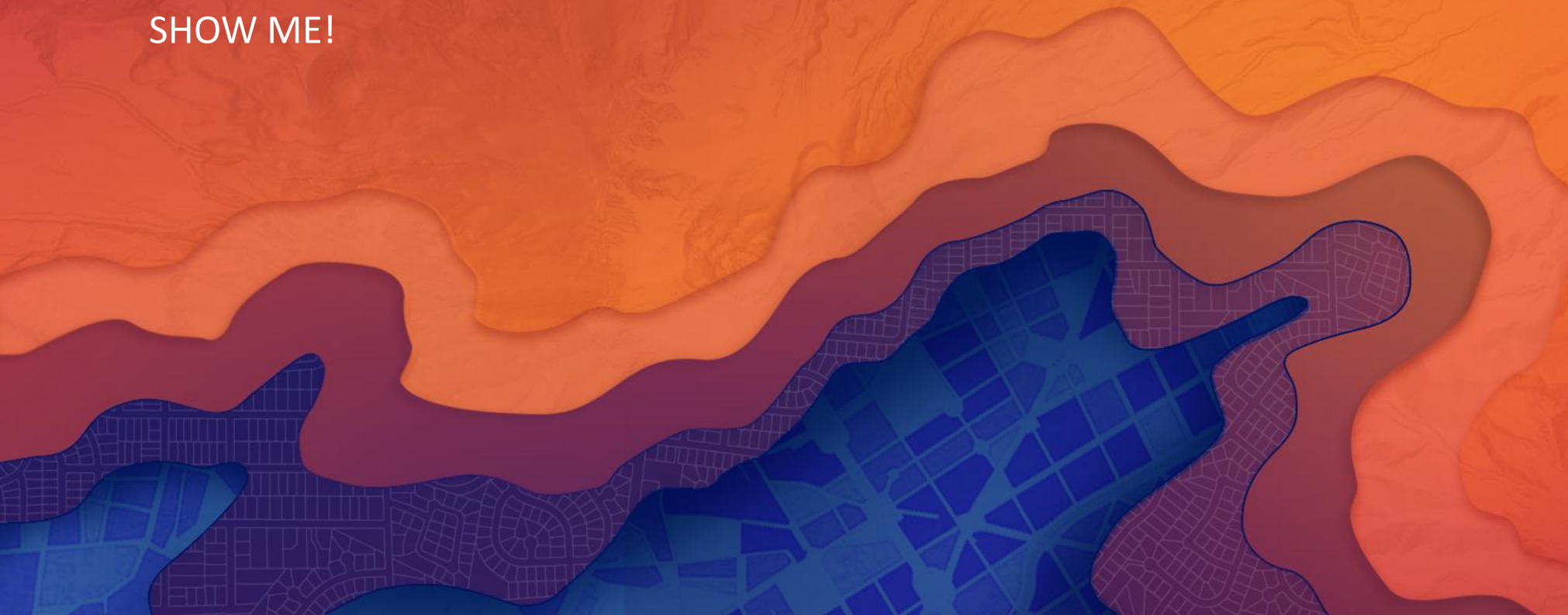
## Mosquito Control

Adulticide Planning  
Field Operations  
Health Concerns  
Larvicide Reporting  
Population Surveillance  
Service Request  
Spray Areas  
Spray Exclusions

Solutions also available for public works organizations that manage underground utilities

# Public Works Maps and Apps

SHOW ME!



# Public Works Maps and Apps

## Transportation Planning

Public Parking  
Sidewalk Inventory  
Signal Inventory  
Road Closures  
Vision Zero  
Crash Analysis  
Road Closures

## Facilities Management

Campus Place Locator  
Campus Editing

## Right of Way Operations

Road Maintenance Agreements  
Sign Inventory  
Streetlight Inventory  
Street Tree Inventory  
Bridge Inventory  
Pavement Marking Inventory  
Guardrail Inventory  
Street Furniture Inventory  
Railroad Crossing Inventory  
SnowCOP  
Flood Planning

## Mapping and Design

Road Network Editing  
Administrative Area  
Data Management  
Plans and Drawings  
Capital Project Planning  
Capital Project Tracking

## Community Events

Events Calendar  
Events Coordination  
Events Map Gallery  
Events Permit  
Events Permit Review  
Events Site Map

## Citizen Services

Citizen Problem Reporter  
My Government Services  
Public Comment  
Park Locator  
Adopta  
Participatory Budgeting

## Mosquito Control

Adulticide Planning  
Field Operations  
Health Concerns  
Larvicide Reporting  
Population Surveillance  
Service Request  
Spray Areas  
Spray Exclusions

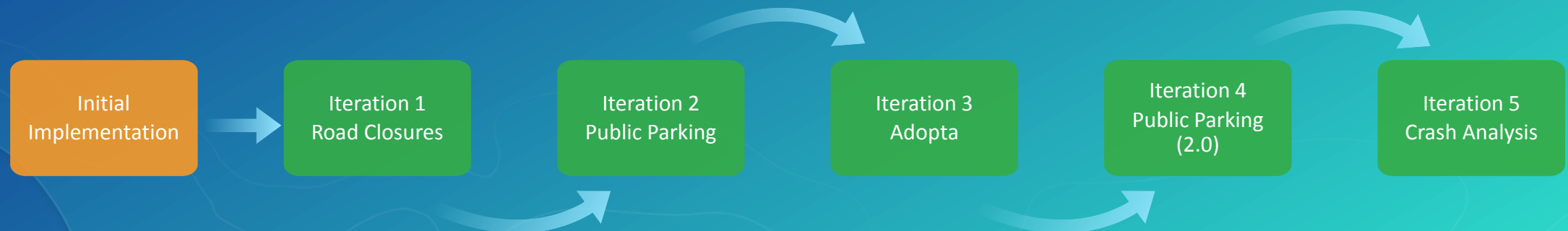
Solutions also available for public works organizations that manage underground utilities

# How do I get started?

Leverage solution offerings to maximize technical expertise and minimize deployment time

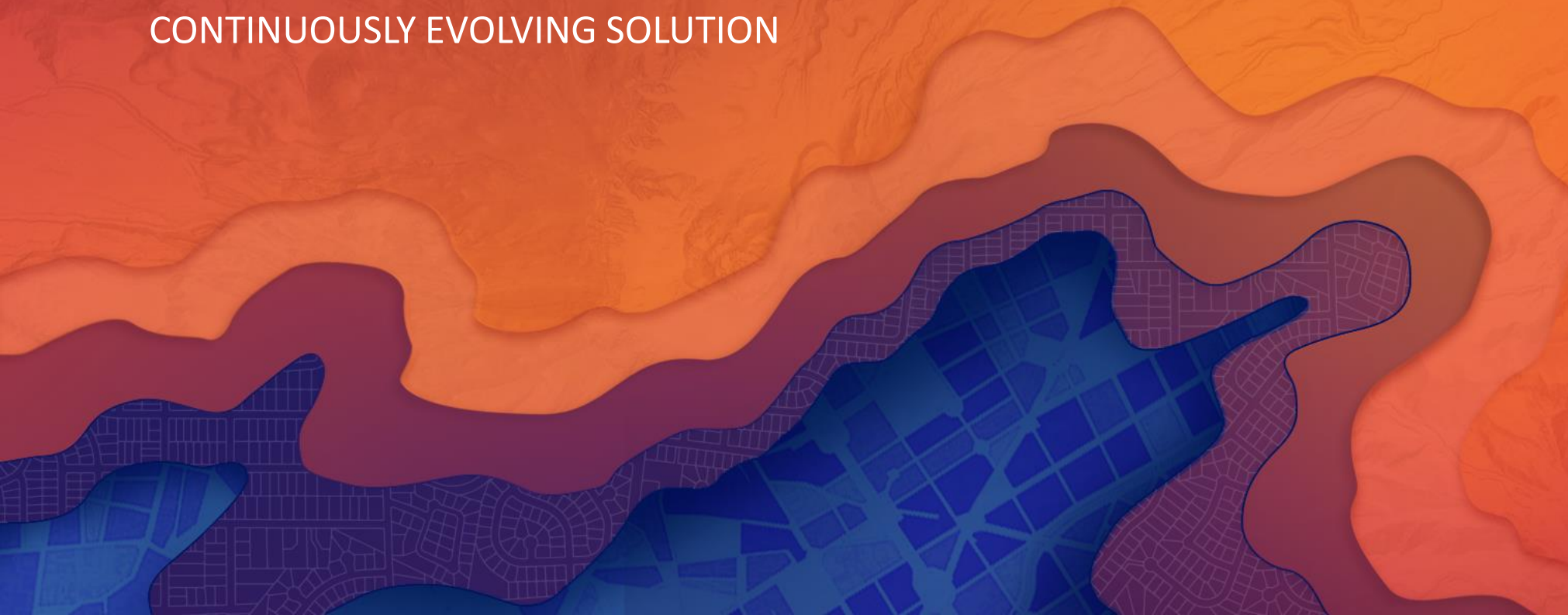
## 1. Deploy quick wins

- a) Configure your mapping platform
- b) Align with strategic business needs
- c) Deploy one or more focused maps and apps
- d) Iterate....



# It's a Process

CONTINUOUSLY EVOLVING SOLUTION



# What's New

- Adopta
- Participatory Budgeting
- Mosquito Adulticide Planning enhancements
- Citizen Problem Reporter enhancements
  - Generate problem IDs, moderate content, email notifications
- Additional deployment approaches
  - ArcGIS Solutions Deployment Tool, simplified information model

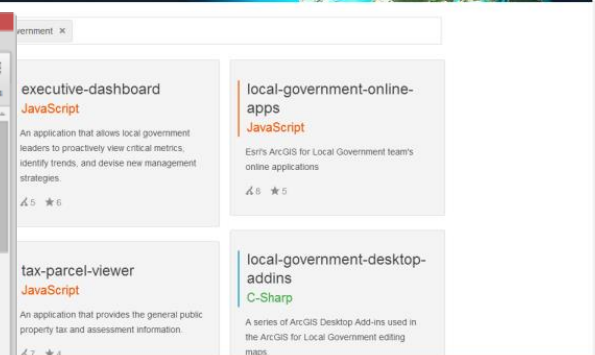
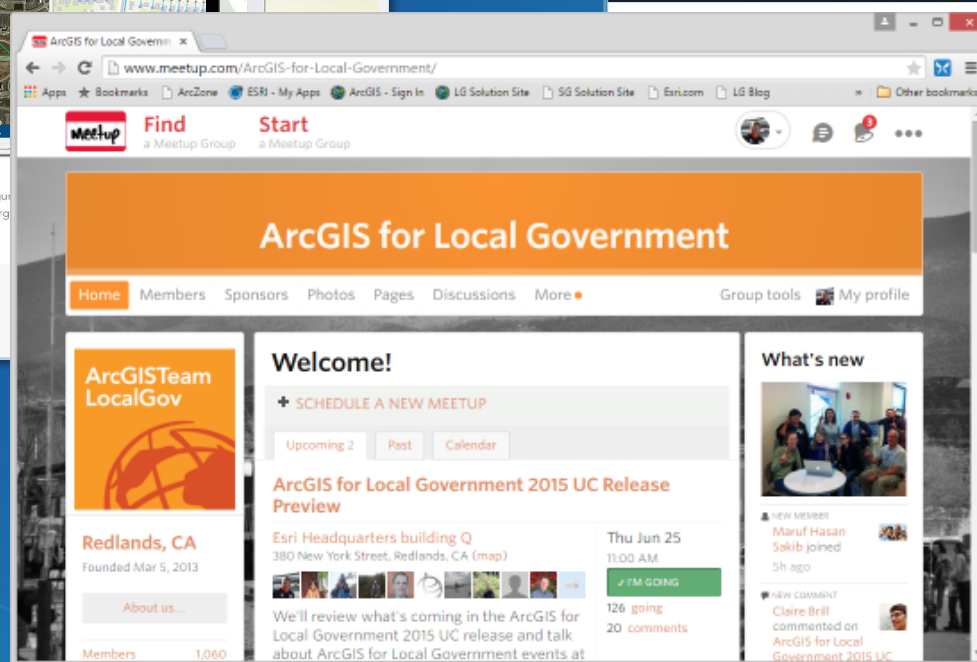
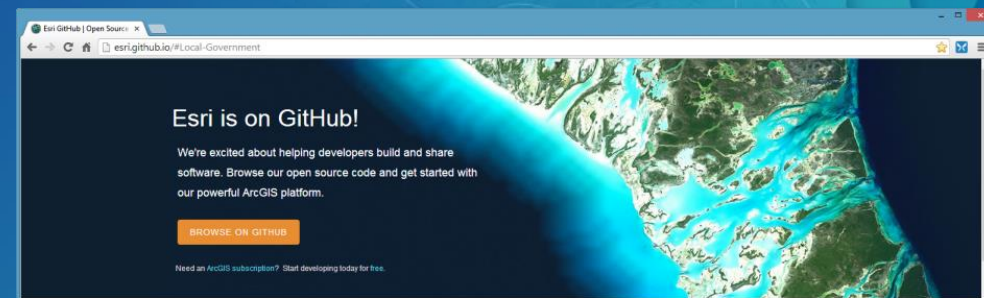
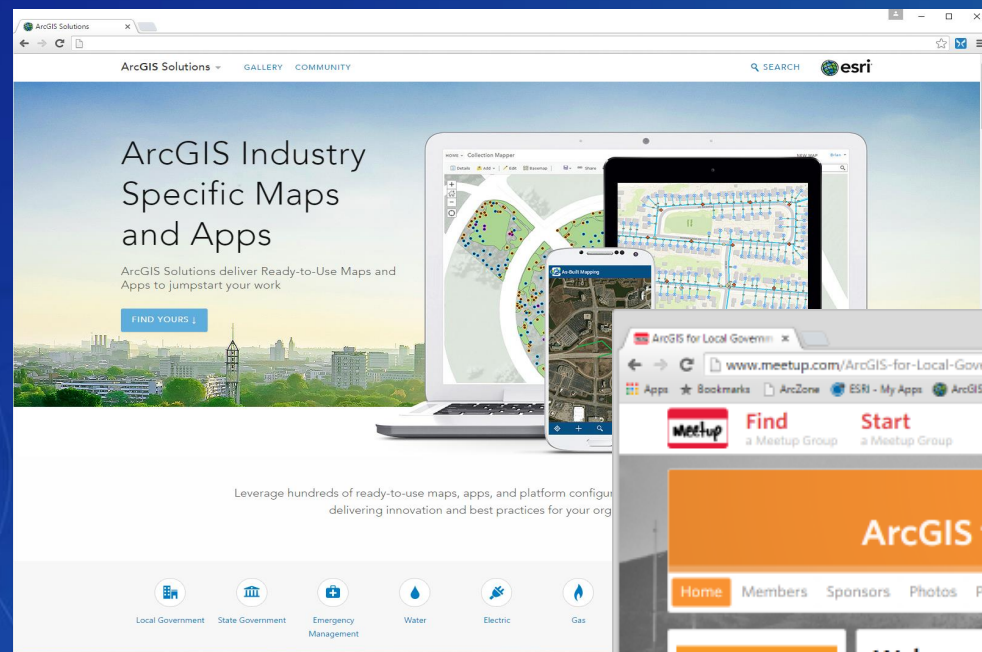
# Coming Soon

Continuously Evolving Solution Offering

- Mobility / Vision Zero
- Right of Way Permitting
- Snow response enhancements
- Capital Project Planning enhancements
- Open Data configurations / Hub initiatives

# Join the Community

It's not just about the technology



# Closing

- Deliver a public works GIS that enables success
  - Easier to deploy and sustain
- Evolve and grow the collection of apps
- Develop a community of users
- Provide a platform for partners to deploy their solutions

# UC Events

- ArcGIS for Local Government Sessions
  - Ten tech workshops
  - Thirteen demo theatre sessions
- Special Interest Group
  - Wednesday lunch
- State and Local Government Social
- Solution Island
  - Focused conversations / support



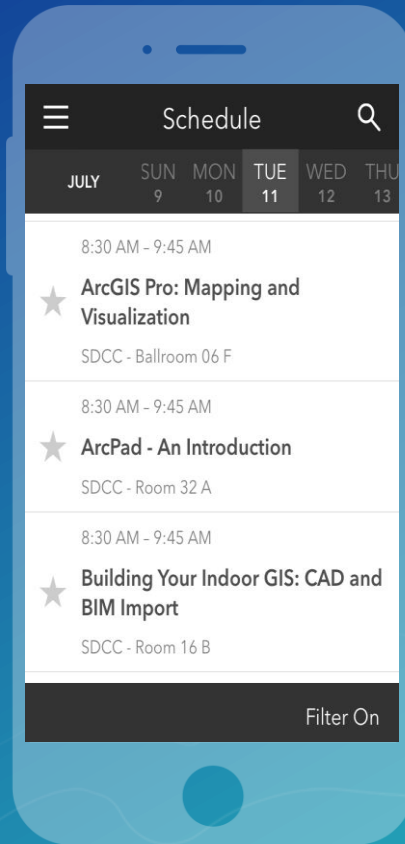
Search for: “ArcGIS for Local Government”  
<http://www.esri.com/events/user-conference/agenda>

# Please Take Our Survey on the Esri Events App!

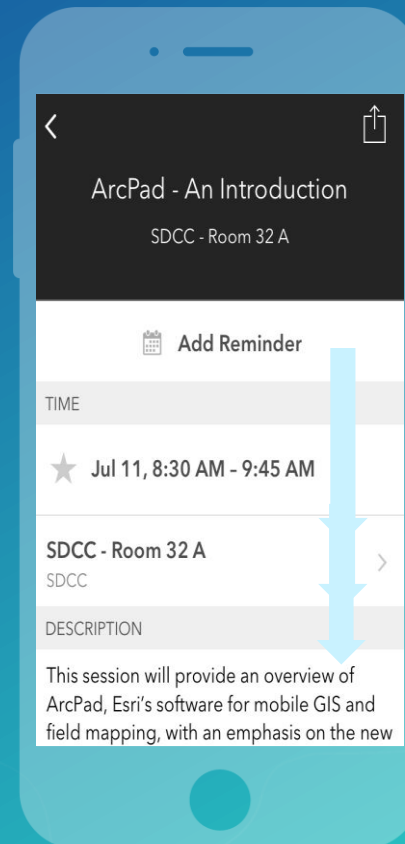
Download the Esri Events app and find your event



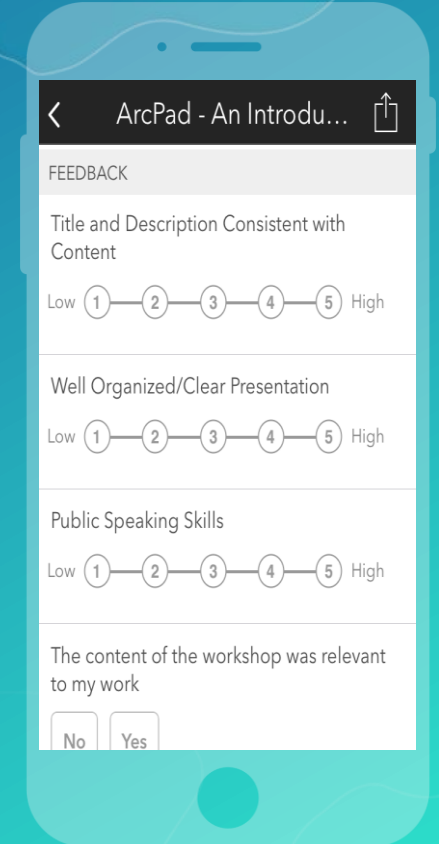
Select the session you attended



Scroll down to find the survey



Complete Answers and Select "Submit"



# Thank you

Be innovative, aware, and know you are not alone

 <http://solutions.arcgis.com>

 <http://meetup.com/ArcGIS-for-Local-Government/>

 @ArcGISLocalGov

 <http://esri.github.com>



esri

THE  
SCIENCE  
OF  
WHERE