

UC



ArcGIS for Utilities and Telecommunications: What's New

Previn Wong

Michael Miller

ArcGIS Solutions Overview



ArcGIS Includes 400+ Industry Specific Configurations

Organized by 9 Primary Domains



Local Government



State Government



Emergency
Management



Water



Electric



Gas



Defense



Telecommunications



Parks & Gardens

ArcGIS Solutions

A core part of ArcGIS

- Free
- Supported
- Updated and enhanced
- Well documented
- Open source
- Backed by a community

ArcGIS Solution are Accelerators

..for the functionality and value of an ArcGIS deployment

- Rapid deployment of industry specific capabilities
- Quick solutions to common business challenges
- Launch or expand an organizational mapping portal
- Establish best practice geospatial workflows

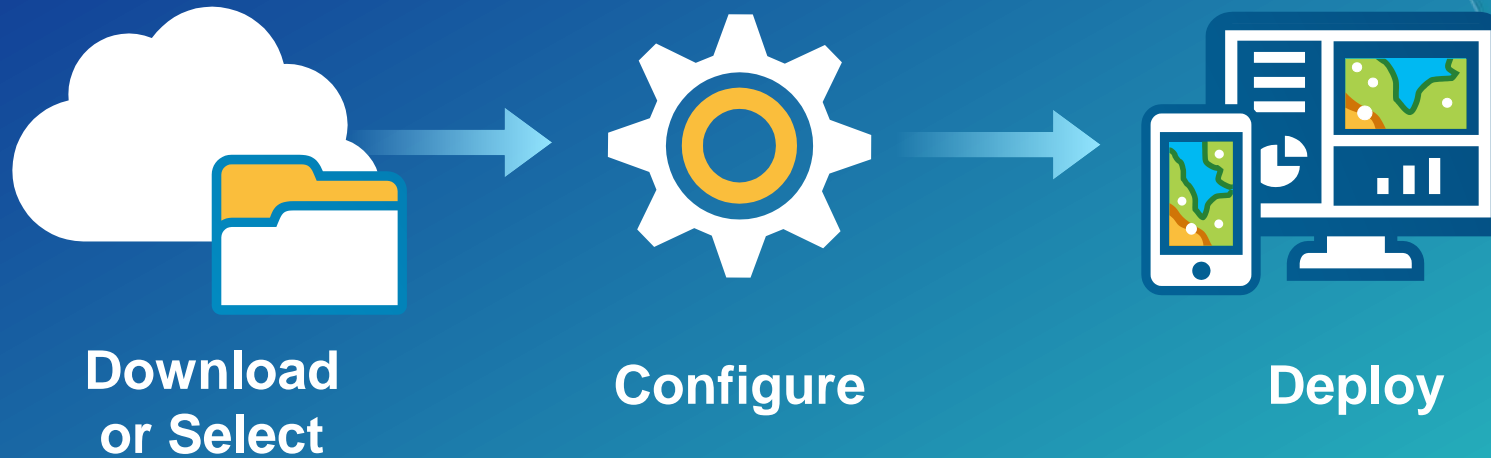
Configurations are Used in Many Ways

Always providing value

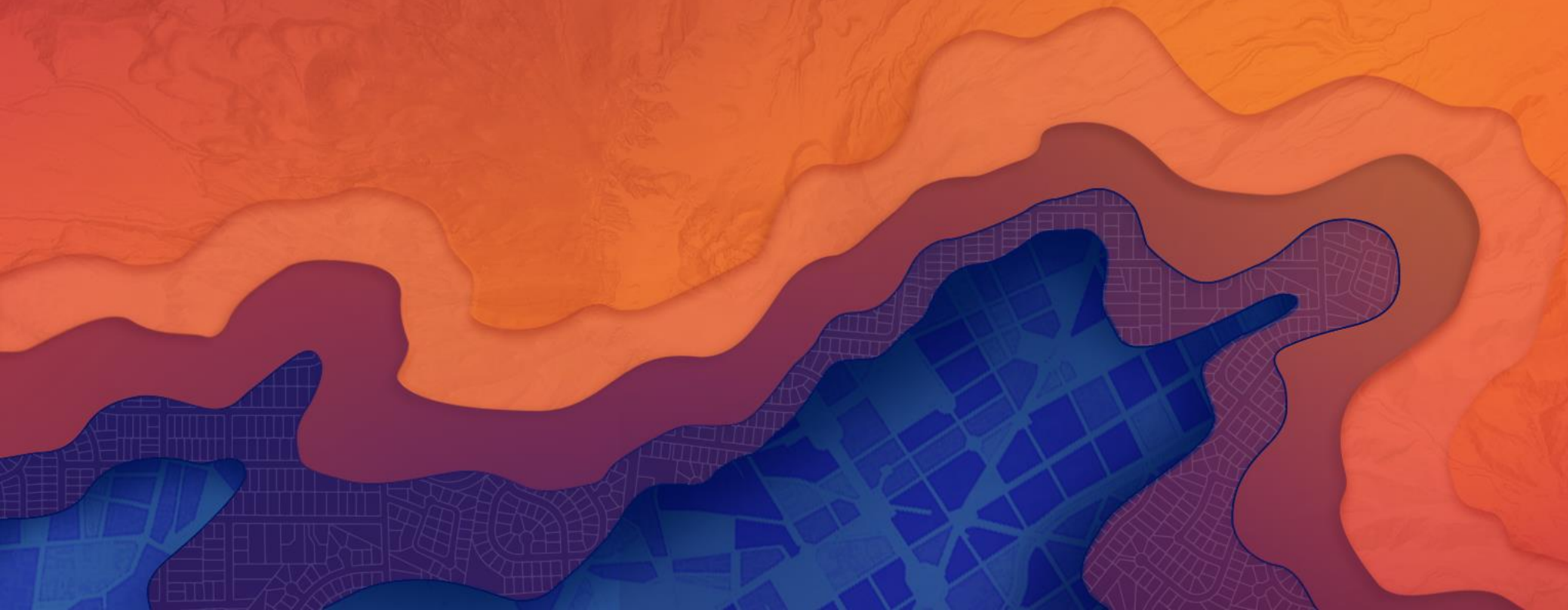
- Production deployment
- First iteration of an app
- Proof of concept
- Code sample
- Workflow example
- Information models
- Requirements for custom application

Configurations are Designed to be Ready-to-Use

Deployment made easier with the ArcGIS Solution Deployment Tools



A Year In Review



Our Focus

A year of enhancements

- Streamlining the deployment
- Resolving bugs
- Enhancing capability
- Building underlying capabilities
- But, this resulted in a limited number of new solutions
- For a complete list
 - <http://solutions.arcgis.com/electric/what-is-new/>
 - <http://solutions.arcgis.com/gas/what-is-new/>
 - <http://solutions.arcgis.com/water/what-is-new/>
 - <http://solutions.arcgis.com/telecommunications/what-is-new/>

Lifecycle Update

Solutions retired or moved to mature support

- ArcGIS for Water

- Retired

- Water Mobile Map
 - Green Infrastructure
 - Inlet Inspection
 - MS4 Inventory Recorder
 - Stormwater Network
 - Water Asset Locator

- Mature:

- CSO Notification
 - Customer Complaints
 - High/Low Water Consumption
 - Social Media Sentiment Viewer
 - Pressure Zone Analysis
 - Water Inventory Reports
 - Water SCADA Processor

- ArcGIS for Gas

- Retired

- Leak Survey Mobile Map
 - Gas Asset Locator
 - Upsell Analysis

- ArcGIS for Telecom

- Retired

- Fiber Data Management Tools

- ArcGIS for Electric

- Retired

- Electric Asset Locator
 - Hazard Notification
 - Violations Notification
 - Event Support

- Mature

- Social Media Sentiment Viewer
 - Storm Vulnerability Assessment

Shared Solutions as Previews

Through Geonet and Github

- Backhaul Optimization
- Utility Isolation Trace
- Solution Reporting Tools
 - Facility Reports for Gas Distribution
 - Facility Reports for Gas Gathering
 - Facility Reports for Gas Transmission
 - Pole Report
 - Water Inventory Reports
- Water Abandon and Un-abandon tools
- CCTV
- Local Government Desktop Add-ins

Enhancing the core

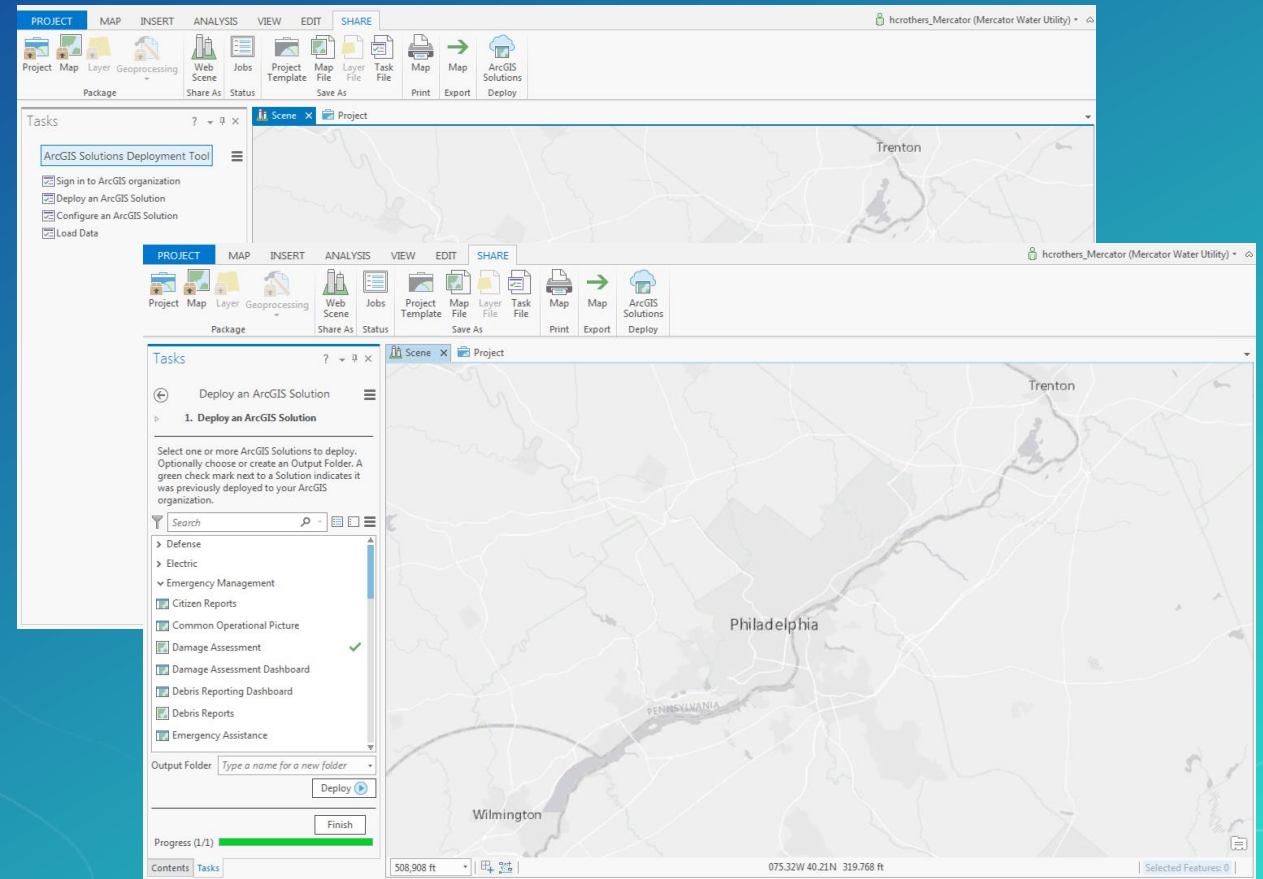
Widgets, App, Add-ins and tools

- Attribute Assistant
- Widgets
 - Smart Editor
 - Group Filter
- Data Assistant
- ArcGIS Solution Deployment Tools
- ArcGIS Layer Templates and the Solutions Layer Catalog
- Utility Network

ArcGIS Solutions Deployment Tool

Automatically Deploy ArcGIS Solutions

- Deploy ArcGIS Solutions using ArcGIS Pro to ArcGIS Online or Portal for ArcGIS
- Currently includes 228 Solutions
- Has tasks to assist with configuration and data loading
- Delivered as an ArcGIS Pro Add-in



New and Improved Solutions

Some of the highlights

- Solutions now available in the ArcGIS Solution Deployment Tool (All Industries)
- Facility Reports for Distribution, Transmission and Gathering (Gas)
- Redesign of the abandon and un-abandon tools in Water Utility Network Editing and Analysis (Water)
- Backhaul Optimization (Telecommunications)
- A redesign of our Stormwater solutions (Water)
- A new geoprocessing process for Utility Isolation Trace (Water)
- Tracking and Traceability (Gas)

Building New Stormwater Solutions

- Requirements:
 - Support both planned and ad-hoc asset inventory and inspection
 - Enable everyone in organization to view assets in a browser or device
 - Enable select people to edit assets in a browser or device
 - Information model supports NPDES/MS4 compliance and includes natural and man-made assets
 - Simplify deployment and management

Stormwater Inventory and Inspection

Deploys Set of Maps and Apps to Support Stormwater Field Inventory and Inspection Workflows

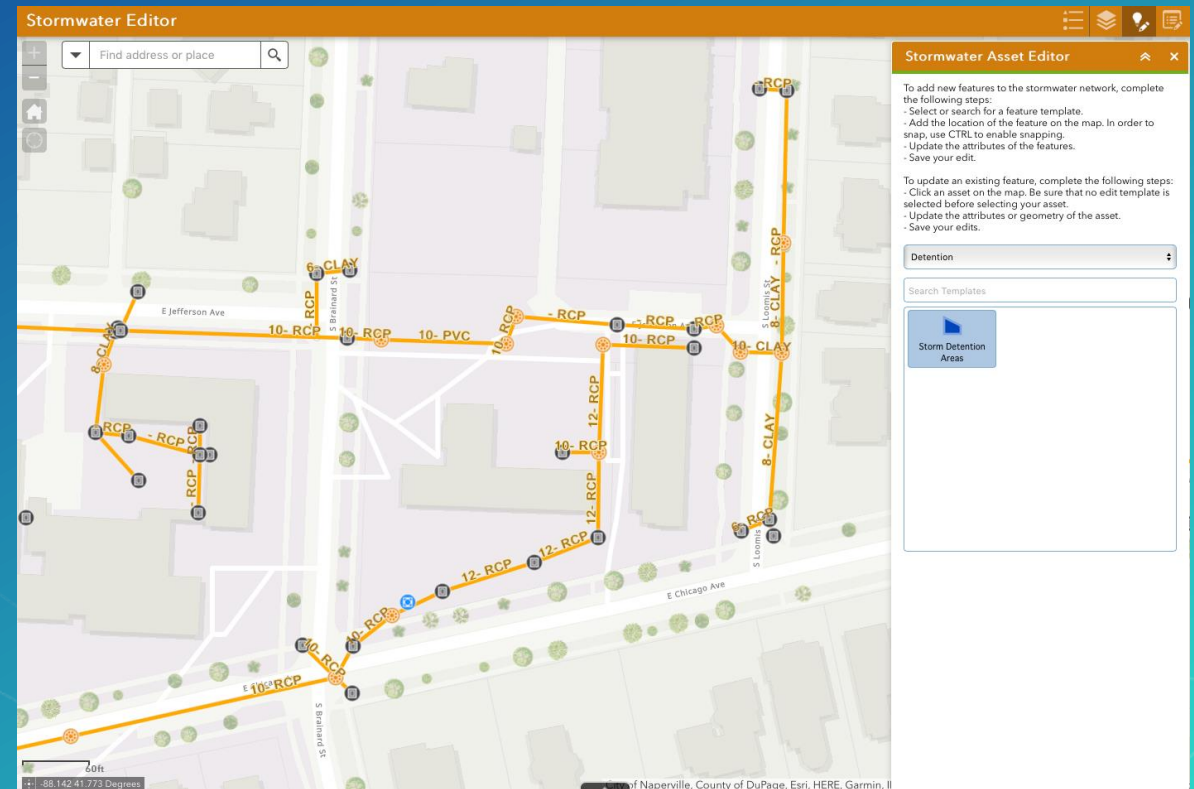
- Includes configurations for:
 - Best Management Practices (BMPs)
 - Culverts
 - Inlets
 - Manholes
 - Open Channels
 - Outfalls



Stormwater Viewer and Editor

Deploys Set of Maps and Apps for Viewing and Editing Stormwater Assets and BMPS in a browser or mobile browser

- Includes Configurations For:
 - Web applications
 - Stormwater Viewer
 - Stormwater Editor
 - Mobile web applications
 - Stormwater Mobile Viewer
 - Stormwater Mobile Editor
 - Survey 123
 - Stormwater Map Change Request



Under the Hood of the New Stormwater Solutions

New Stormwater Solutions

- No more “mega services” for the stormwater network that include all assets
 - Was too easy to break your maps and apps
- Deploys a service for each asset type including:
 - The asset layer
 - A 1:m relationship to either an asset specific inspection table or a generic inspection table
- Easier for you to use multiple ArcGIS Apps
 - Web, Collector & Survey 123
- Simple to deploy using the ArcGIS Deployment Tool
- Results in a more modular deployment

New and Improved Solutions

Some of the highlights

- Solutions now available in the ArcGIS Solution Deployment Tool (All Industries)
- Facility Reports for Distribution, Transmission and Gathering (Gas)
- Redesign of the abandon and un-abandon tools in Water Utility Network Editing and Analysis (Water)
- Backhaul Optimization (Telecommunications)
- A redesign of our Stormwater solutions (Water)
- A new geoprocessing process for Utility Isolation Trace (Water)
- Tracking and Traceability (Gas)

What's Coming



A View into Our Backlog

Enhancing the core of ArcGIS and the industry configurations

- Adding support for related tables in Smart Editor
- Applying the service redesign to Water and Sewer
- Set of data reviewer rules for Electric
- Moving the Illicit Trace to a python toolbox
- A redesign of Leak Survey
- Release of the beta of CCTV
- A new widget for simple web based project costing(CIP)
- Industry configurations for the Utility Network

Summary

A year of enhancements

- Simplifying the deployment
- Providing core components
- Building for the future

Please Take Our Survey on the Esri Events App!

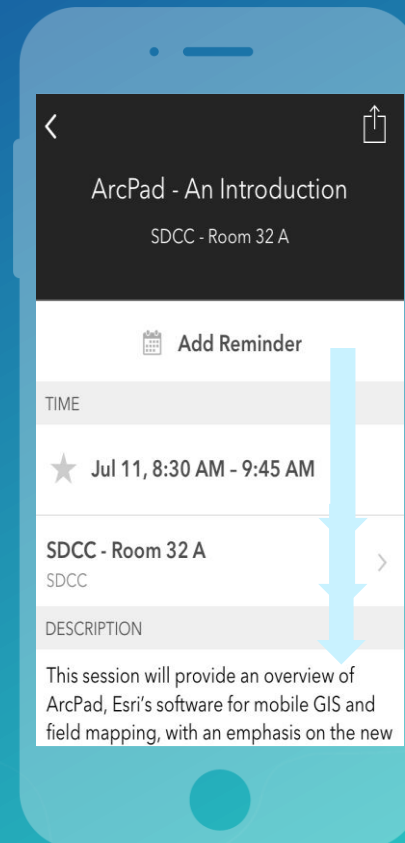
Download the Esri Events app and find your event



Select the session you attended



Scroll down to find the survey



Complete Answers and Select "Submit"





esri

THE
SCIENCE
OF
WHERE