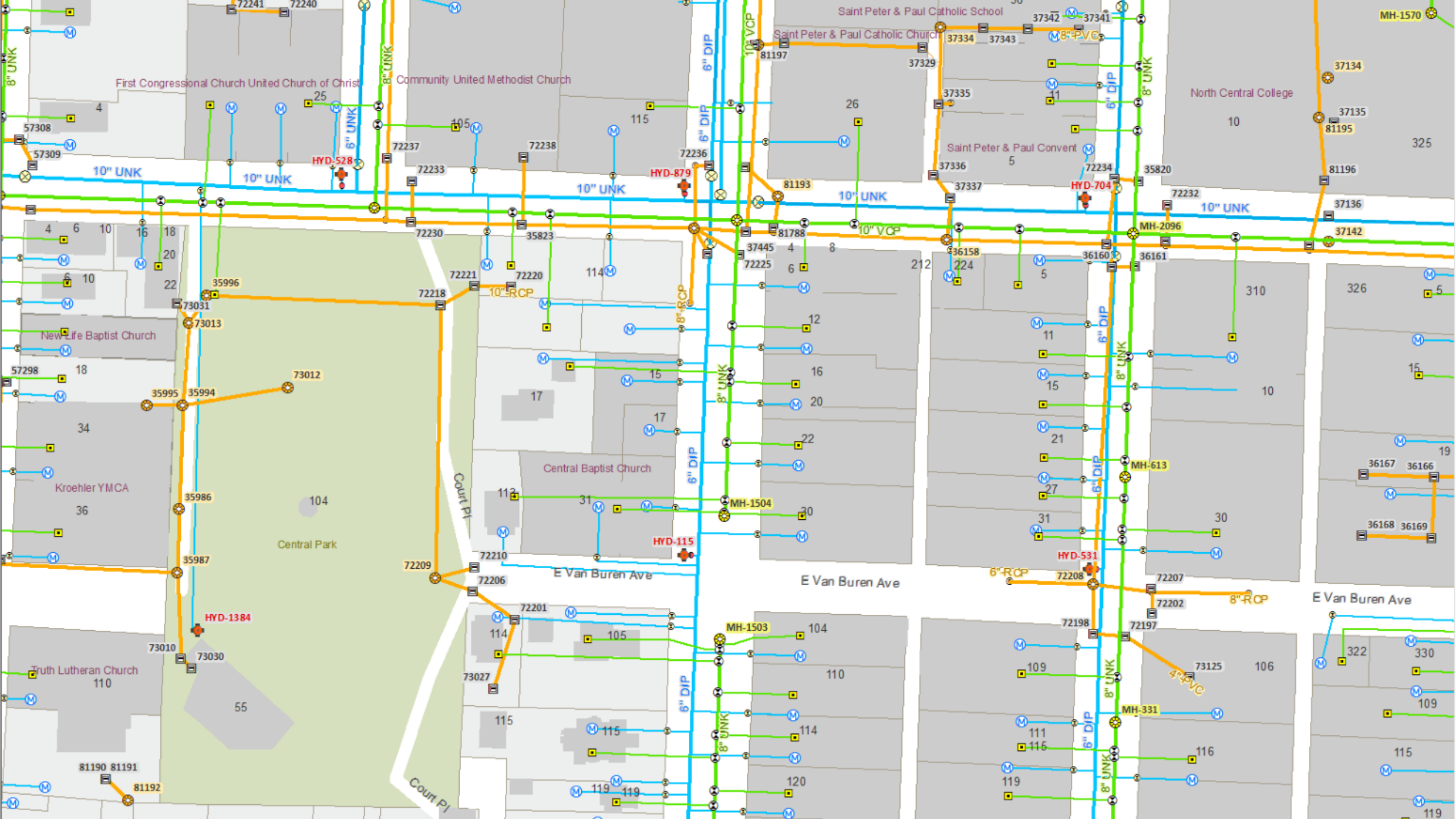


Leveraging Attribute Assistant in Local Government Editing Workflows

Clare Price

Chris Fox



What about a tool to...

Streamline your editing experience

- Increased productivity
- Reduced button clicks
- Ensures data entry
- Simplified complex operations
- Standardized editing procedures

Attribute Assistant

ArcMap Add-In

- Editor Extension
- Configured through a geodatabase table
- 71 methods that can be triggered when:
 - Feature created
 - Geometry modified
 - Attribute updated
 - Batch processing

A quick tour of Attribute Assistant

Three key pieces

- Attribute Assistant Toolbar
- Dynamic Value Table
- Generate ID Table

OBJECTID *	Table Name	Field Name	Value Method	Value Info	Create	Change	On Manual	Comments	Rule Wei	On Chang
128	BuildingInteriorSpace	FLOOR	INTERSECTING_FEATURE	BuildingFloor\FLOOR	True	True	False	<Null>	<Null>	True
129	BuildingInteriorSpace	BASEELEV	INTERSECTING_FEATURE	BuildingFloor\BASEELEV	True	True	False	<Null>	<Null>	True
90	FacilitySite	FACILITYID	EXPRESSION	("FAC-" & {OBJECTID})	True	False	False	<Null>	<Null>	False
97	FacilitySite	NAME	CASCADE_ATTRIBUTE	FacilitySitePoint\NAME	False	True	False	<Null>	<Null>	False
91	FacilitySitePoint	FACILITYID	INTERSECTING_FEATURE	FacilitySite\FACILITYID	True	False	False	<Null>	<Null>	True
92	FacilitySitePoint	NAME	INTERSECTING_FEATURE	FacilitySite\NAME	True	False	False	<Null>	<Null>	True
93	FacilitySitePoint	SUBTYPEFIELD	INTERSECTING_FEATURE	FacilitySite\SUBTYPEFIELD	True	False	False	<Null>	<Null>	True
94	FacilitySitePoint	FEATURECODE	INTERSECTING_FEATURE	FacilitySite\FCODE	True	False	False	<Null>	<Null>	True
95	FacilitySitePoint	FACAREA	INTERSECTING_FEATURE	FacilitySite\SHAPE_Area	True	False	False	<Null>	<Null>	True
96	FacilitySitePoint	FULLADDR	NEAREST_FEATURE_ATTRIBUTES	SiteAddressPoint\FULLADDR\FULLADD	True	True	False	<Null>	<Null>	False
98	FacilitySitePoint	OWNTYPE	INTERSECTING_FEATURE	FacilitySite\OWNTYPE	True	False	False	<Null>	<Null>	True
99	FloodImpactArea	FLOODIMPID	GENERATE_ID	IMPACTID\0\IMPA-[seq]	True	False	False	<Null>	<Null>	False
121	LandscapeArea	FACILITYID	INTERSECTING_FEATURE	FacilitySite\FACILITYID	True	True	False	<Null>	<Null>	True
100	Levee	FACILITYID	GENERATE_ID	LEVEEID\0\Levee-[seq]	True	False	False	<Null>	<Null>	False
101	Levee	FLOODIMPID	INTERSECTING_FEATURE	FloodImpactArea\FLOODIMPID	True	False	False	<Null>	<Null>	True
102	Levee	CUBYRD	EXPRESSION	((([SHAPE_Length]*[HEIGHT]) * ([SIDESLO	True	True	False	<Null>	<Null>	False
103	Levee	TOTCOST	EXPRESSION	(([CUBYRD]*[CSTCUBYRD])	True	True	False	<Null>	<Null>	False
17	MasterStreetName	FULLNAME	EXPRESSION	[ROADPREDIR] + " " + [ROADNAME] + "	True	True	False	<Null>	1	False
18	MasterStreetName	STATUS	LAST_VALUE	<Null>	True	True	False	<Null>	<Null>	False
49	MasterStreetName	FULLNAME	CASCADE_ATTRIBUTE	RoadCenterline\FULLNAME	False	True	False	<Null>	1	False
50	MasterStreetName	FULLNAME	CASCADE_ATTRIBUTE	SiteAddressPoint\FULLNAME	False	True	False	<Null>	1	False
124	PavementMarkingLine	FACILITYID	INTERSECTING_FEATURE	FacilitySite\FACILITYID	True	True	False	<Null>	<Null>	True
125	PavementMarkingPoint	FACILITYID	INTERSECTING_FEATURE	FacilitySite\FACILITYID	True	True	False	<Null>	<Null>	True
140	Pole0	FACILITYID	GENERATE_ID	POLEID\0\POLE-[seq]\True	False	False	True	<Null>	10	False

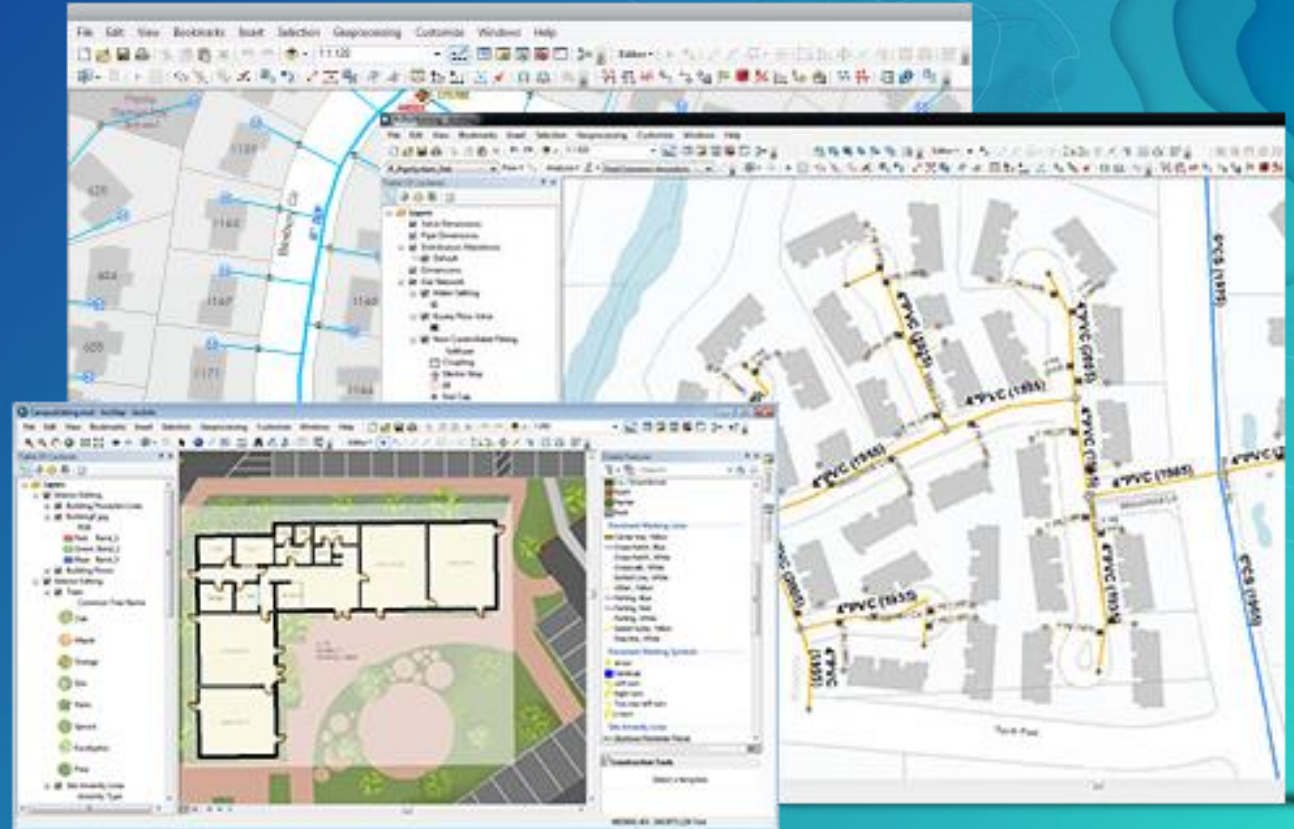


OBJECTID *	Sequence Name	Sequence Counter	Comments	Interval Value
9	ADDRESSPOINTID	52	<Null>	1
10	ADDRESSENTRANCED	4	<Null>	1
11	SITEADDRESSID	11	<Null>	1
12	PSTLADDID	5	<Null>	1
13	CENTERLINED	12	<Null>	1
14	IMPACTID	1	<Null>	1
15	LEVEEID	1	<Null>	1
16	PREPLAN	3	<Null>	1
17	PRECOMPLEX	1	<Null>	1
18	STREETID	300	<Null>	1
19	STREETINTID	88	<Null>	1
20	WHYDRANT	1439	<Null>	1
21	MANHOLE	2493	<Null>	1
22	WSYSTEMVALVE	4817	<Null>	1
23	WMETER	8193	<Null>	1
24	WCONTROLVALVE	6	<Null>	1
25	PICLEANOUT	36	<Null>	1
26	WATERMAIN	4280	<Null>	1
27	WATERLATERAL	19659	<Null>	1
28	POLED	7	<Null>	1
29	SIGNID	16	<Null>	1
30	SIGNALID	1	<Null>	1
31	STREETLIGHTID	1	<Null>	1

Attribute Assistant and ArcGIS Solutions

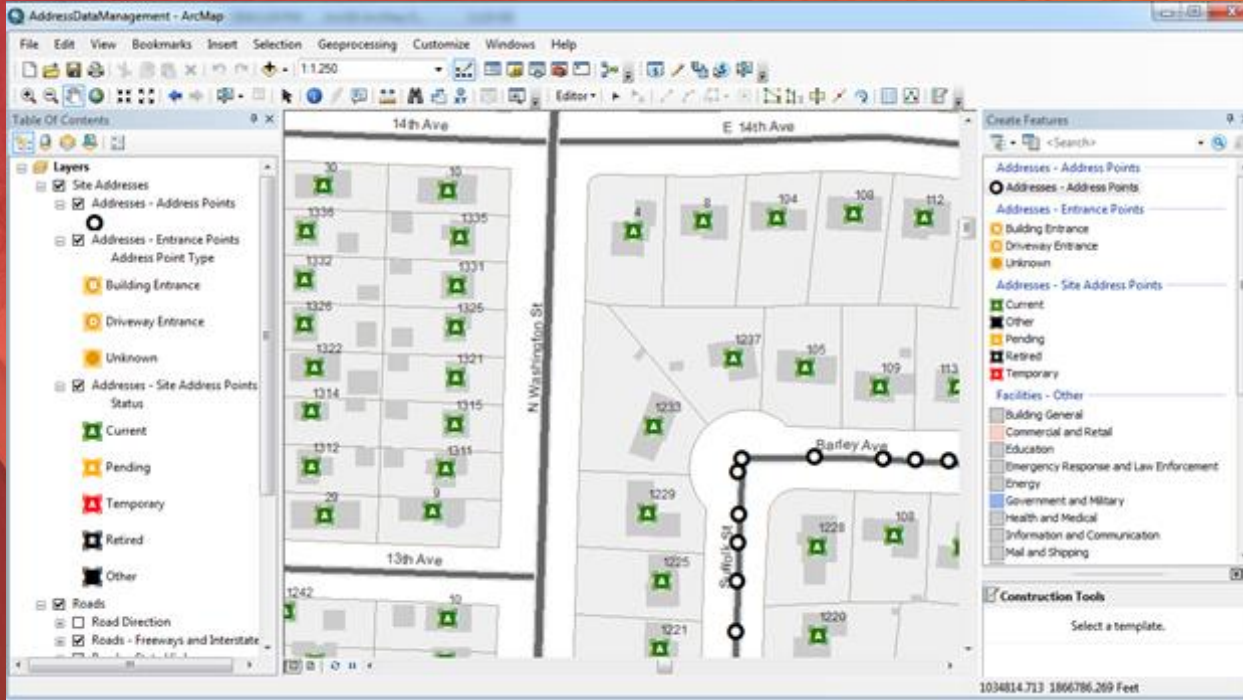
Configured for your industry workflows

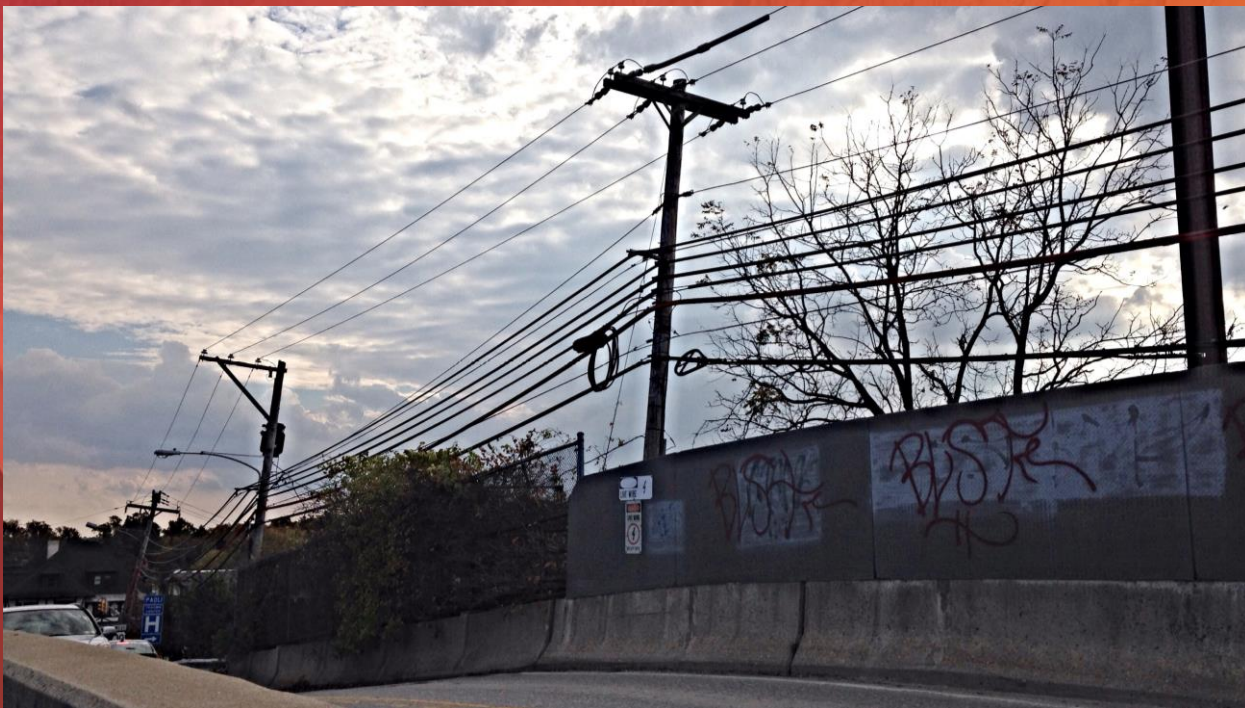
- Address Data Management
- As-Built Editing and Analysis
- Campus Editing
- Flood Planning
- Nighttime Flow Analysis
- Road Network Management
- Sign Inventory
- Signal Inventory
- Streetlight Inventory
- Water Utility Network Editing and Analysis



Address Data Management

Attribute Assistant in Action



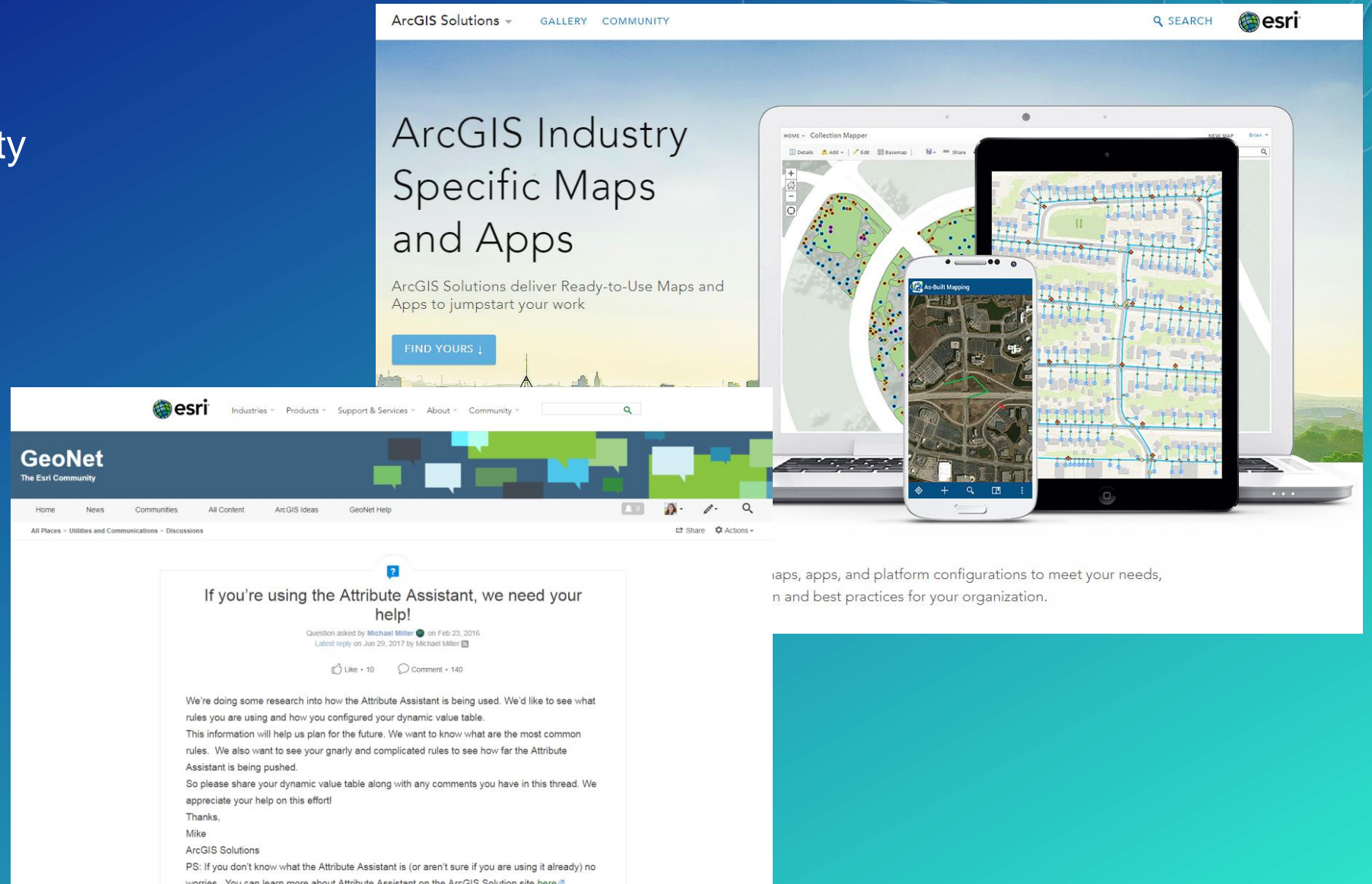


Streetlight Inventory

Data Collection and Attribute
Assistant

Resources

GeoNet Community Documentation



ArcGIS Solutions GALLERY COMMUNITY SEARCH esri

ArcGIS Industry Specific Maps and Apps

ArcGIS Solutions deliver Ready-to-Use Maps and Apps to jumpstart your work

FIND YOURS ↓

esri Industries Products Support & Services About Community

GeoNet

The Esri Community

Home News Communities All Content ArcGIS Ideas GeoNet Help

All Places Utilities and Communications Discussions

Share Actions

If you're using the Attribute Assistant, we need your help!

Question asked by Michael Miller on Feb 23, 2016
Latest reply on Jun 29, 2017 by Michael Miller

Like • 10 Comment • 140

We're doing some research into how the Attribute Assistant is being used. We'd like to see what rules you are using and how you configured your dynamic value table. This information will help us plan for the future. We want to know what are the most common rules. We also want to see your gnarly and complicated rules to see how far the Attribute Assistant is being pushed. So please share your dynamic value table along with any comments you have in this thread. We appreciate your help on this effort!

Thanks,
Mike
ArcGIS Solutions

PS: If you don't know what the Attribute Assistant is (or aren't sure if you are using it already) no worries. You can learn more about Attribute Assistant on the ArcGIS Solution site [here](#).

maps, apps, and platform configurations to meet your needs, and best practices for your organization.

Review

Leverage ArcGIS Solutions

If needed, start with a blank Dynamic Value table

Do not version the Generate ID table

Iterate when developing rule base



esri

THE
SCIENCE
OF
WHERE

Please Take Our Survey on the Esri Events App!

Download the Esri Events app and find your event



Select the session you attended



Scroll down to find the survey



Complete Answers and Select "Submit"

