

Configuring Environmental Screening in your Community

Jess Neuner

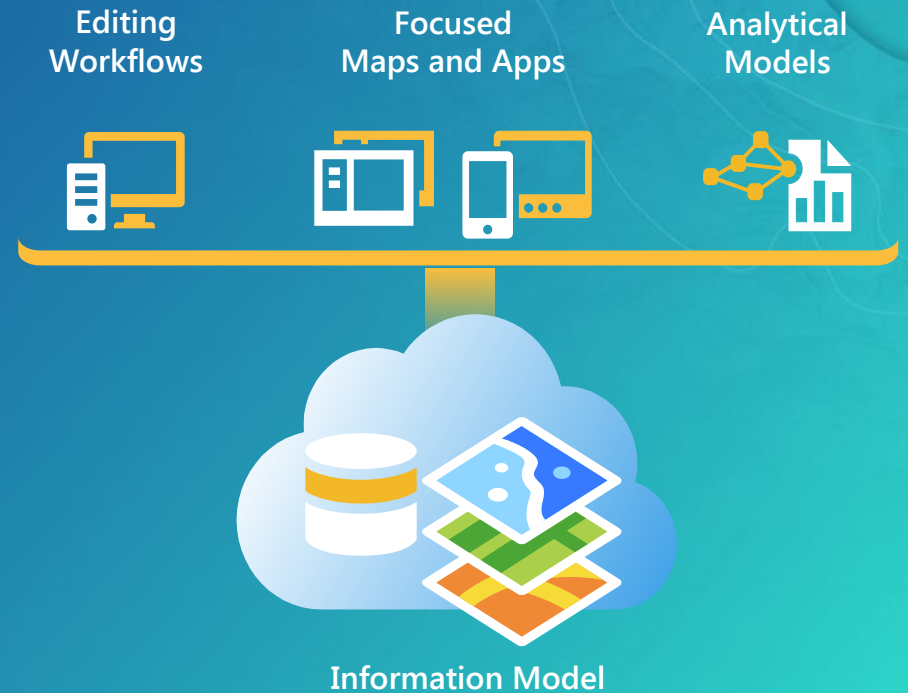
Demo Theater Agenda

- Intro
- Demonstrations
- Considerations and Requirements
- Getting started
- Your feedback

ArcGIS for State Government

Esri solutions for state government customers

- Series of useful maps and apps focused on state government work
 - Configurable and extensible
 - Freely available and fully supported
- Community of users
 - Best Practices / Implementation Support
- Network of Esri Services and Partner offerings
 - Help users implement, sustain and enhance



.... available on premise or in the cloud

ArcGIS for State Government

Transportation

Railroad Crossing Inspection
Road Closures
Bridge Inventory
Environmental Screening
Crash Analysis
Crash Risks Briefing
Guardrail Inventory
Pavement Marking Inventory
Sign Inventory
Signal Inventory
Transportation 511
SnowCOP
Streetlight Inventory



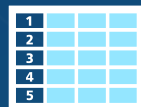
Public Health

Beach Monitoring
Water Quality Monitoring
Restaurant Inspection
Restaurant Inspection Results
My Health Services
Birth Outcomes
Birth Outcomes Briefing
Model Organization



Secretary of State

Early Voting
Polling Place Locator
Election Results
My Elected Representative
Historical Elections Results



Emergency Management

Situational Awareness Viewer
Flood Planning
Community Events
Community Mitigation
Emergency Assistance
Evacuation Zones
Road Closures
Damage Assessment
My Hazard Information
EM Maps
Model Organization
Briefing Book
Citizen Reports
Common Operational Picture
Situational Awareness Viewer
Operations Response
Photo Survey
Shelter Locator

Local Impact Map
Road Closures
CAMEO Tools
Incident Briefing
Health and Safety Reports
Debris Reporting
Floodplain Inquiry
Emergency Assistance
Evacuation Zone
Incident Status Dashboard
Logistics Planning
Hazard Vulnerability Assessment
Community Resilience
Resilience Dashboard
Resilience Outreach



Environment and Fish and Wildlife

Permit Status
Permit Inspection
Permit Dashboard
Hunting License Locator
Water Access Locator
Wildlife Management Area Locator
Environmental Screening
Environmental Impact Analysis
Environmental Impact Polling
Trail Locator
Citizen Science Reporter
Citizen Science Manager

Model Organization
Impact Briefing
Water Quality Inspections
Water Quality Results
Park and Recreation Locator
Community Events
Wildlife Photo Survey



Economic Development

Live, Work, and Locate
Incentive Zones
Site Selector
Community Events Coordination
Event Locator
Property Lister
Property Listing Review



GIS/IT

Executive Dashboard
Community Parcels
Community Addresses
Maps and Apps Gallery
Crowdsource Manager
Crowdsource Polling
Crowdsource Reporter
Service Catalog/Hosted Services
Model Organizations
PLSS



Environmental Impact

A collection of applications to support project review

Analyze

Communicate

Solicit Feedback

Environmental Screening

Environmental Screening

Report

AOI area : 1,793.66 acres

Show areas in [Metric Units](#)

Environmental Impact Analysis Briefing

A story map

Environmental Impact Analysis Briefing

Assessment Summary

The following table summarizes the potential impact of the project on sensitive species and protected areas in the study area.

	Proposed	Alternate
Eagle Nesting Locations (count)	50,899 acres	70,13
Tidal Flat Areas (acres)	145	1
Salt Marsh Areas (acres)	-	5
Wildlife Management Areas (acres)	-	18
Conservation Areas (acres)	606	1
Marine Protected Areas (acres)	441	1

For more detailed information, including which areas are affected, please review the detailed summary reports:

- [Proposed Scenario Report](#)
- [Alternate Scenario Report](#)

Environmental Impact Public Comment

Sign In

Rail Project Primary Proposal

Rail Project Primary Proposal

Agency: Our Agency

Submission Date: May 18, 2015

Project Type: Transportation Project

Project Status: Public Comment Period

Location Description:
The proposed route follows an existing corridor between Miami and West Palm Beach.

Project Description:
The proposed rail lines are designed to improve intercity commuting by leveraging an existing corridor connecting the major cities on the south coast. Once completed, the commuter line will provide reliable and convenient intercity service.

Public Hearing:
Public hearings are scheduled for Miami, Fort Lauderdale, and West Palm Beach.

Comments

Comments

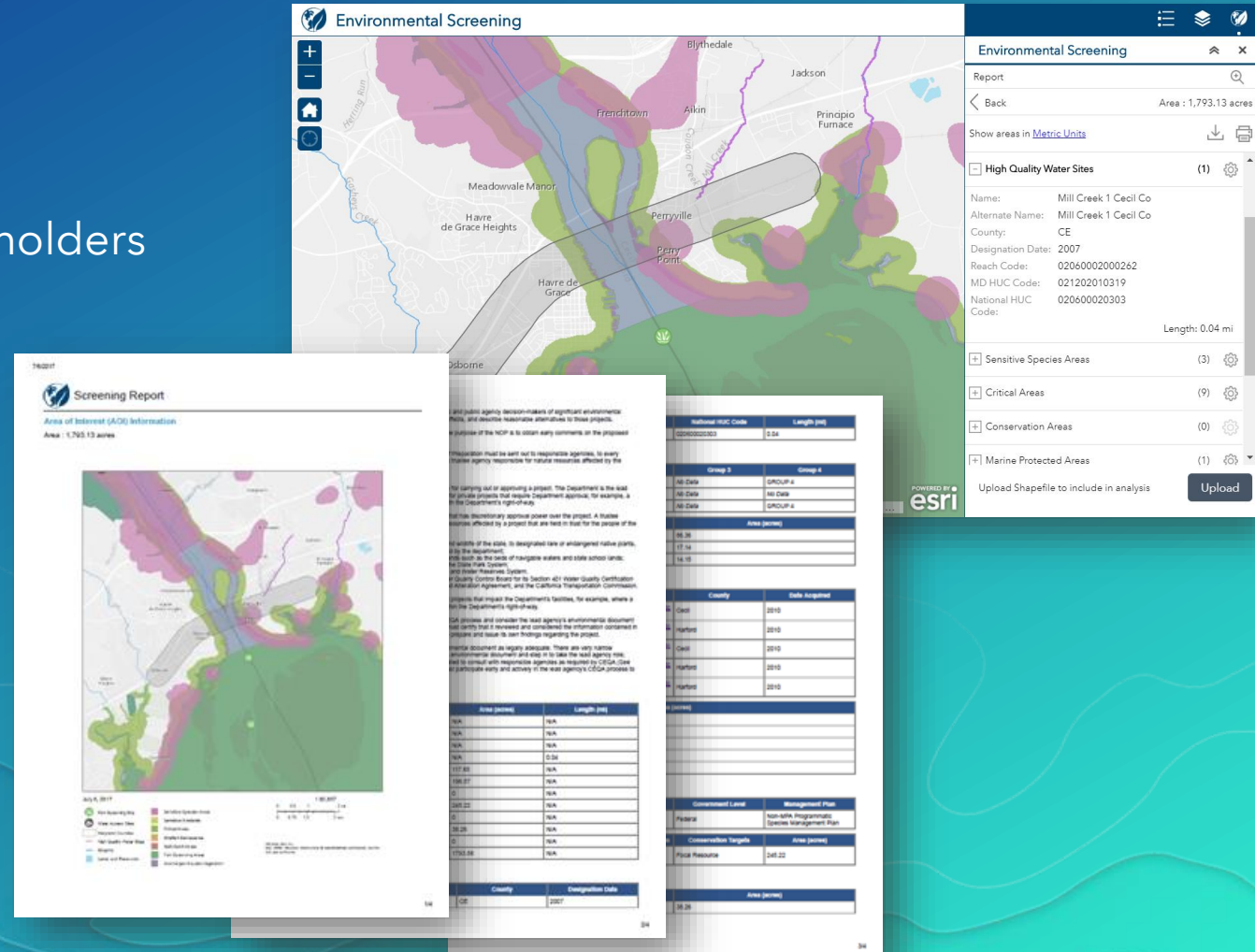
Date Submitted: March 17, 2016

Powered by **esri**

Environmental Screening

Web based analysis and reporting of potential impacts on the natural environment

- Enables scientists and planners to:
 - Identify and describe potential impacts
 - on sensitive species and protected areas
 - Communicate analysis results with stakeholders
 - Support management decisions



Environmental Screening Workflows

Define Study Location

Search

Draw

Shapefile

Coordinates

Analyze Data

Select

Clip Analysis

Review results

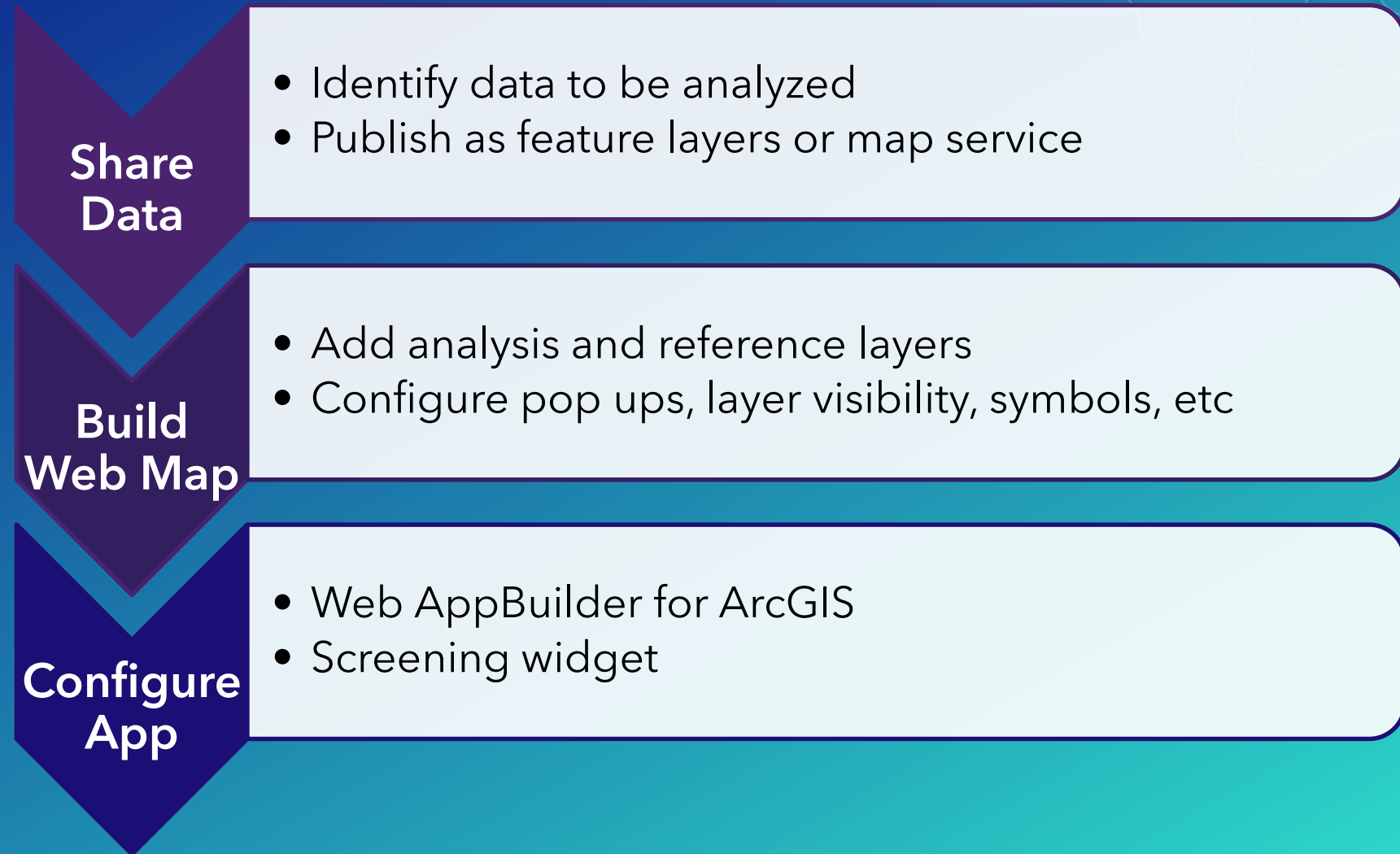
Share Results

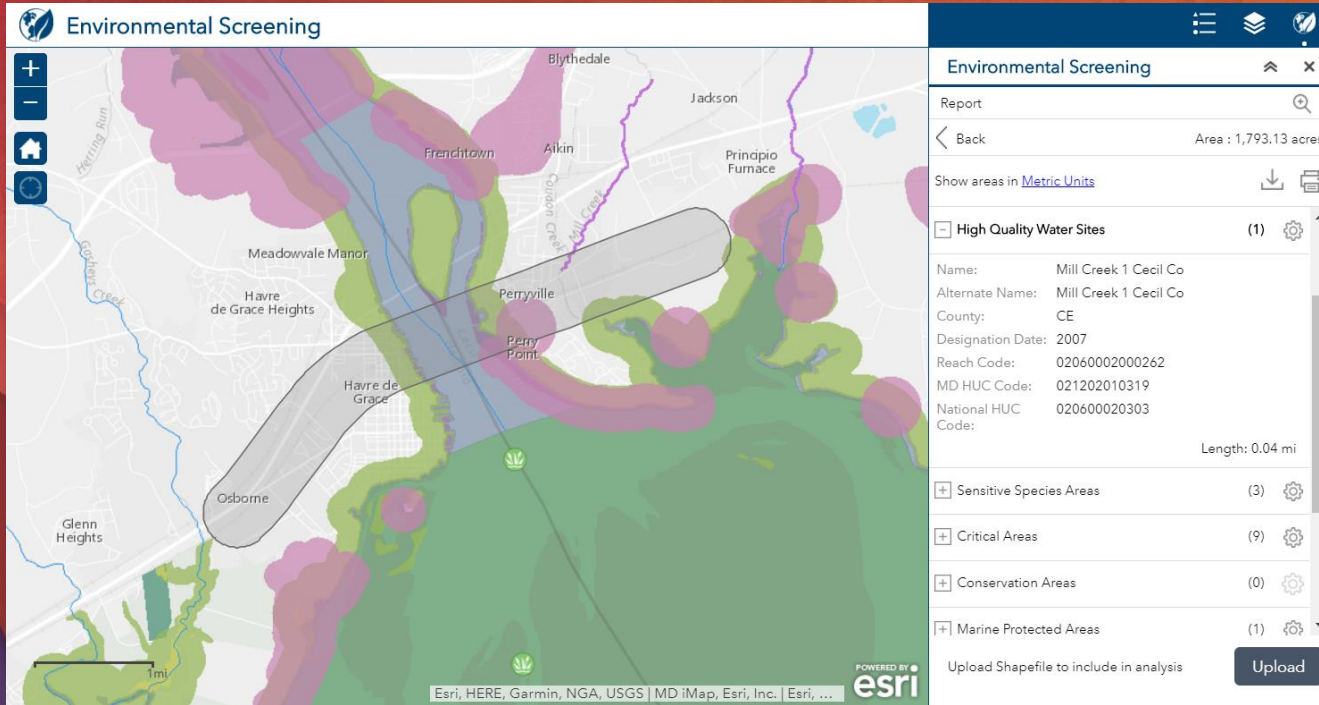
Printed report

CSV download

Feature data
download

Configuring Environmental Screening





Demo

Configuring Environmental Screening

Analysis Settings

Layers &
Reporting Fields

Available Tools

Tolerances

Download Settings

Formats

Report Settings

Organizational
Branding

Additional Settings

Labels

Buffer Settings

Symbology

Search Settings

Considerations

- Streamline configuration for users
- Performance for very dense data
 - Leverage map or tile services
- Download requirements

Key Requirements Review

- Analysis layer
 - Feature service or hosted feature layer
 - Map service feature layer
- Feature data download
 - Sync enabled feature service or hosted feature layer, OR
 - Extract Data Task geoprocessing service

Get started with Environmental Screening

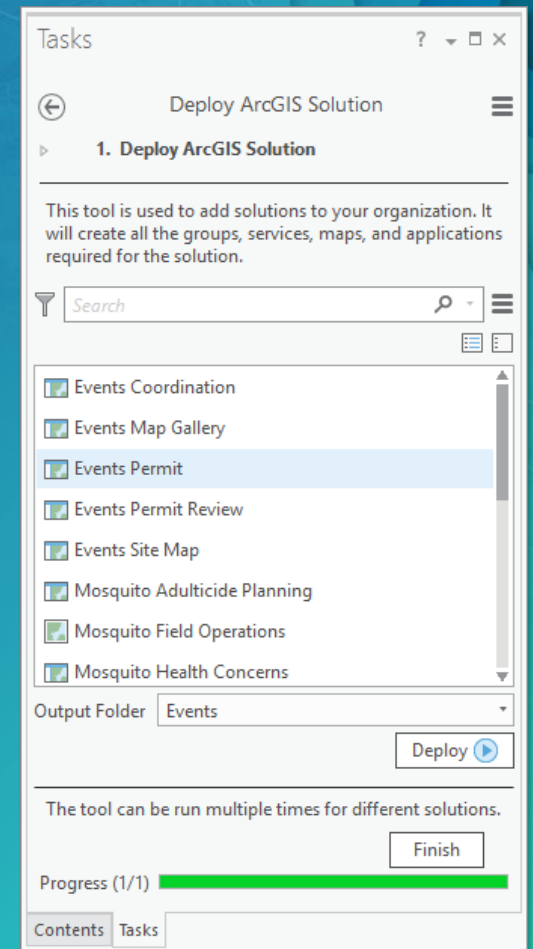
1. Organize data
2. Build web map
3. Configure Web AppBuilder with the Screening widget

Visit the Solutions site to get started:

esriurl.com/SGEnvScreen

ArcGIS Solutions Deployment Tool

- ArcGIS Pro tasks and tools
 - Discover, deploy and configure solutions in an ArcGIS Organization
- Enable users to
 - Discover solution offerings available
 - Deploy the services, maps, and configurable apps to their organization
 - Configure the solution to meet specific needs in their organization
 - Add fields
 - Modify field domains and aliases
 - Load their data (if required)



Please Take Our Survey on the Esri Events App!

Download the Esri Events app and find your event



Select the session you attended



Scroll down to find the survey



Complete Answers and Select "Submit"



Thank you!

Questions

esriurl.com/SGEnvScreen

Connect With Us after UC



<http://solutions.arcgis.com/state-government>



<https://www.meetup.com/ArcGIS-for-State-Government>



@ArcGISStateGov



<http://esri.github.com>

Recommended Sessions

Wednesday

2:30 pm - Demo Theater 2 (here!)
Environmental Analysis Solution

6:00 - 8:00 pm - Hilton - Promenade Plaza
State and Local Government Social

Thursday

10:15 am - Tech Session - Room 33A
Configuring Environment and Natural Resources
Maps and Apps

1:30 pm - Tech Session - Room 3
Leveraging State and Local Government
Solutions to Improve Field Activities



esri

THE
SCIENCE
OF
WHERE