

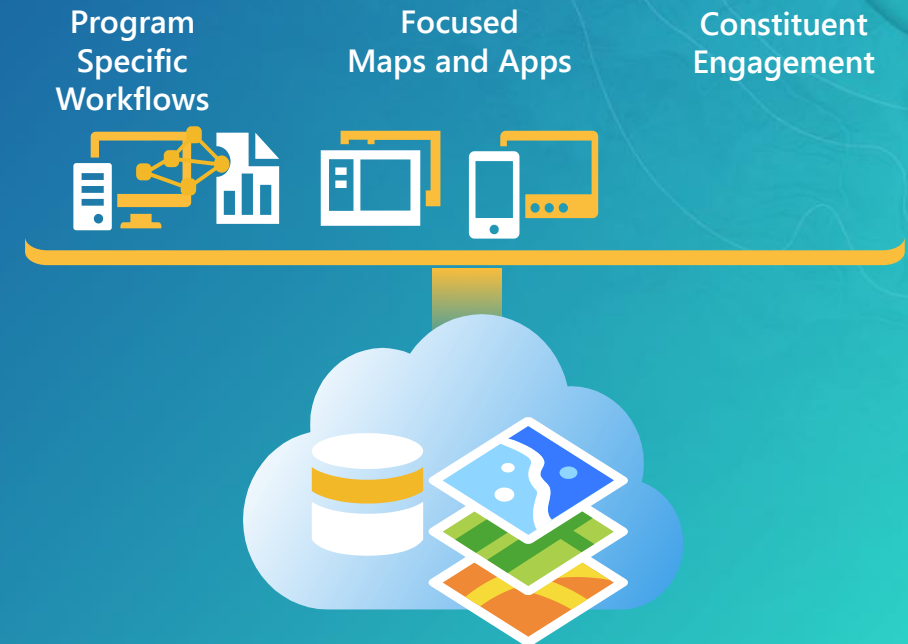
Transportation 511 Solution

John Hauck

ArcGIS for State Government

Solutions for Esri's government customers

- Series of useful maps and apps focused on government work
 - Organized into modules
 - Extensible, configurable
 - Freely available and fully supported
 - A foundation for Partner solutions
- Community of users
 - Best Practices / Implementation Support
- Network of Esri Services and Partner offerings
 - Help users implement, sustain and enhance



... available on-premise or in the cloud

ArcGIS as a Platform



Making mapping and location aware apps available across your organization

Transforming the role of GIS

Transportation

Railroad Crossing Inspection
Road Closures
Bridge Inventory
Environmental Screening
Crash Analysis
Guardrail Inventory
Pavement Marking Inventory
Sign Inventory
Signal Inventory
Transportation 511
Crash Risks Briefing



Public Health

Beach Monitoring
Water Quality Monitoring
Restaurant Inspection
Restaurant Inspection Results
My Health Services
Birth Outcomes
Birth Outcomes Briefing
Model Organization



Secretary of State

Early Voting
Polling Place Locator
Election Results
My Elected Representative
Historical Elections Results



Emergency Management

Situational Awareness Viewer
Flood Planning
Community Events
Community Mitigation
Emergency Assistance
Evacuation Zones
Road Closures
Damage Assessment
My Hazard Information
EM Maps
Model Organization
Briefing Book
Citizen Reports
Common Operational Picture
Incident Analysis Viewer
Operations Response
Photo Survey
Shelter Locator

Public Information Map
Local Impact Map
Road Closures
CAMEO Tools
Incident Briefing
Health and Safety Reports
Debris Reporting
Floodplain Inquiry
Emergency Assistance
Evacuation Zone
Incident Status Dashboard
Logistics Planning
Hazard Vulnerability Assessment



Environment and Fish and Wildlife

Permit Status
Permit Inspection
Permit Dashboard
Hunting License Locator
Water Access Locator
Wildlife Management Area Locator
Environmental Screening
Environmental Impact Analysis
Environmental Impact Polling
Trail Locator
Citizen Science Reporter
Citizen Science Manager
Model Organization
Impact Briefing
Water Quality Inspections
Water Quality Results
Park and Recreation Locator
Community Events
Wildlife Photo Survey



Economic Development

Live, Work, and Locate
Incentive Zones
Site Selector
Event Locator



GIS/IT

Executive Dashboard
Community Parcels
Community Addresses
Maps and Apps Gallery
Crowdsourcing Manager
Crowdsourcing Polling
Crowdsourcing Reporter
Service Catalog/Hosted Services
Model Organization
PLSS



Transportation

Railroad Crossing Inspection
Road Closures
Bridge Inventory
Environmental Screening
Crash Analysis
Guardrail Inventory
Pavement Marking Inventory
Sign Inventory
Signal Inventory

Transportation 511
Crash Risks Briefing



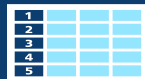
Public Health

Beach Monitoring
Water Quality Monitoring
Restaurant Inspection
Restaurant Inspection Results
My Health Services
Birth Outcomes
Birth Outcomes Briefing
Model Organization



Secretary of State

Early Voting
Polling Place Locator
Election Results
My Elected Representative
Historical Elections Results



Emergency Management

Situational Awareness Viewer
Flood Planning
Community Events
Community Mitigation
Emergency Assistance
Evacuation Zones
Road Closures
Damage Assessment
My Hazard Information
EM Maps
Model Organization
Briefing Book
Citizen Reports
Common Operational Picture
Incident Analysis Viewer
Operations Response
Photo Survey
Shelter Locator



Public Information Map
Local Impact Map
Road Closures
CAMEO Tools
Incident Briefing
Health and Safety Reports
Debris Reporting
Floodplain Inquiry
Emergency Assistance
Evacuation Zone
Incident Status Dashboard
Logistics Planning
Hazard Vulnerability Assessment

Environment and Fish and Wildlife

Permit Status
Permit Inspection
Permit Dashboard
Hunting License Locator
Water Access Locator
Wildlife Management Area Locator
Environmental Screening
Environmental Impact Analysis
Environmental Impact Polling
Trail Locator
Citizen Science Reporter
Citizen Science Manager
Model Organization
Impact Briefing
Water Quality Inspections
Water Quality Results
Park and Recreation Locator
Community Events
Wildlife Photo Survey



Economic Development

Live, Work, and Locate
Incentive Zones
Site Selector
Event Locator



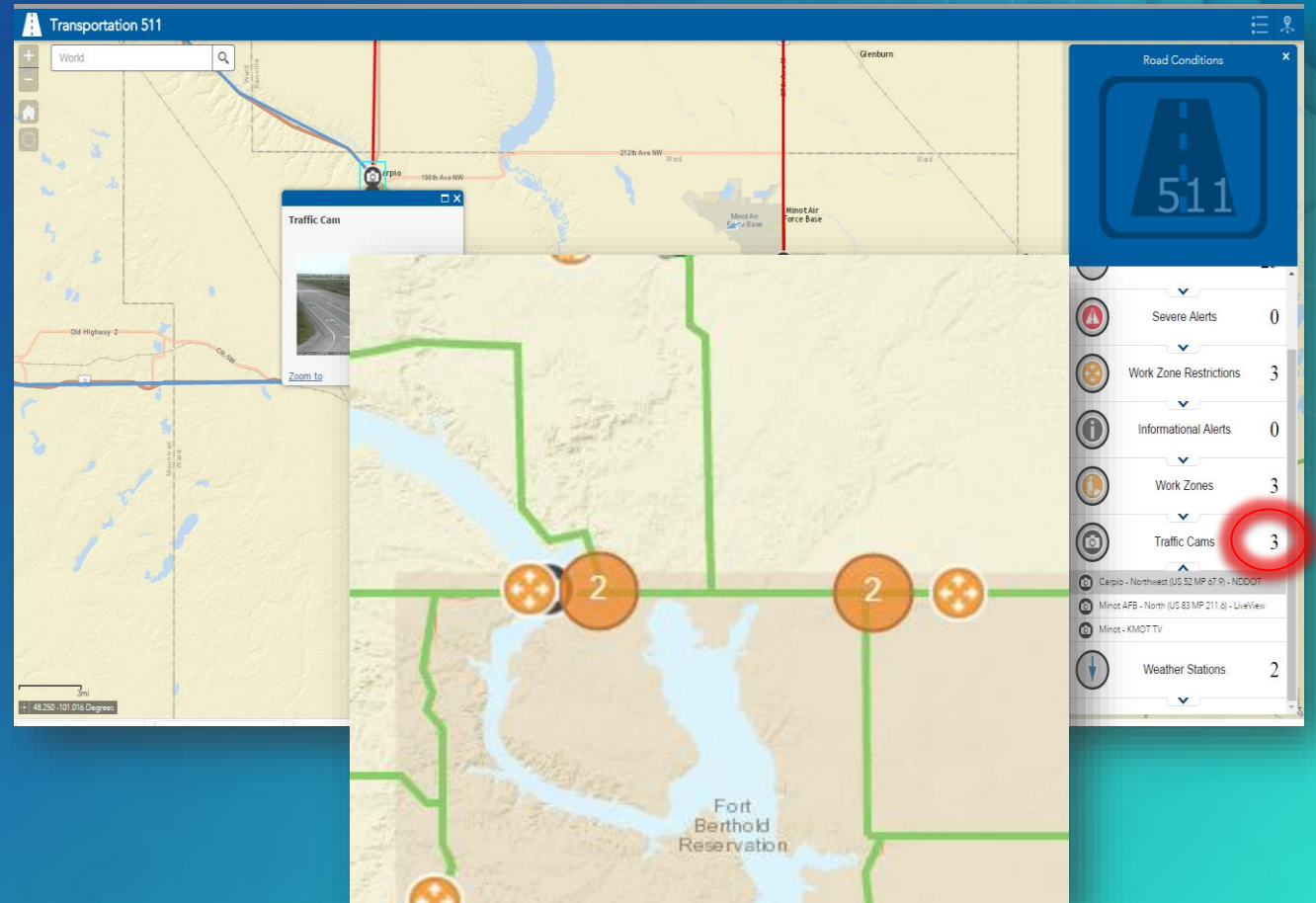
GIS/IT

Executive Dashboard
Community Parcels
Community Addresses
Maps and Apps Gallery
Crowdsourcing Manager
Crowdsourcing Polling
Crowdsourcing Reporter
Service Catalog/Hosted Services
Model Organization
PLSS



Transportation 511

- InfoSummary Widget + Script
 - Designed for use by DOT
 - Communicate status
- InfoSummary Widget
 - Exploring feature details
 - Feature Counts
 - Configurable list of feature details
 - Can be grouped (optional)
 - Display point features as clusters



Configure InfoSummary



Transportation 511

- InfoSummary Widget + Script
 - Refresh hosted feature collections
 - Python 2.7 or Python 3.4
 - Publisher rights in your ArcGIS Online organization



Configure Update Script



Transportation 511

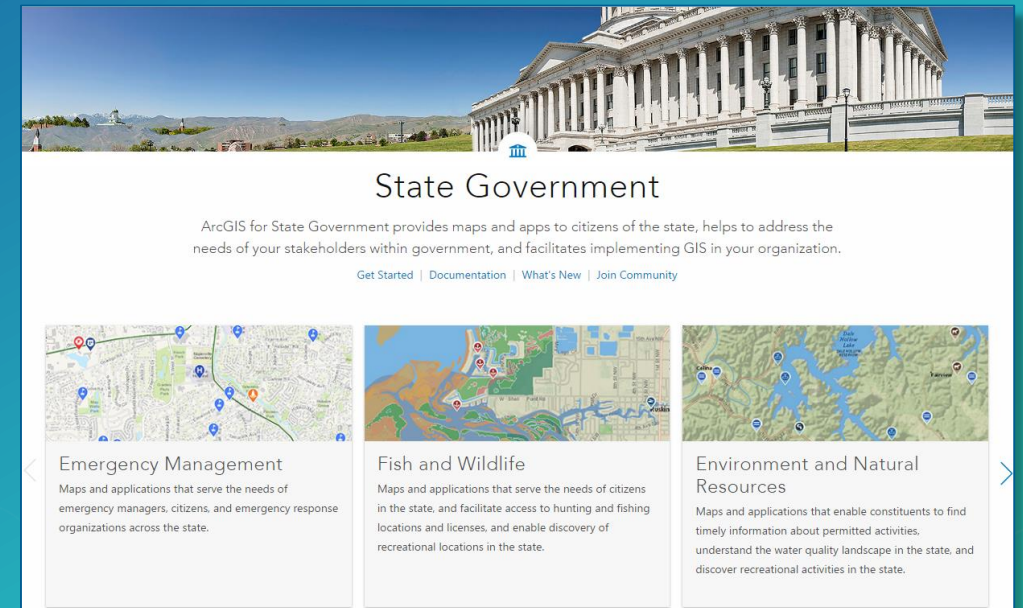
- **InfoSummary Widget + Script**
 - **Designed for use by DOT**
 - Communicate status
- **InfoSummary Widget**
 - Exploring feature details
 - Feature Counts
 - Configurable list of attributes from each feature
 - Display point features as clusters
- **Update script to refresh hosted feature collections**



Getting Started

- Identify the business needs of your organization
- Select a configuration pattern that makes sense for your organization
- Configure quickly, customize if necessary
- Leverage ArcGIS Online web application templates
- Don't hesitate to ask for help from
 - Esri, Partners, Peers

solutions.arcgis.com



The Community ▶ It's not just about the technology



Thank You



<http://solutions.arcgis.com/state-government>
<http://solutions.arcgis.com/local-government>



<http://www.meetup.com/ArcGIS-for-State-Government/>
<http://www.meetup.com/ArcGIS-for-Local-Government/>
<http://www.linkedin.com/groups?gid=5114903>



@ArcGISStateGov



<http://esri.github.com>



esri

THE
SCIENCE
OF
WHERE