

UC



Esri Roads and Highways: What's New at 10.5 & 10.5.1

Nathan Easley

What's New in Desktop



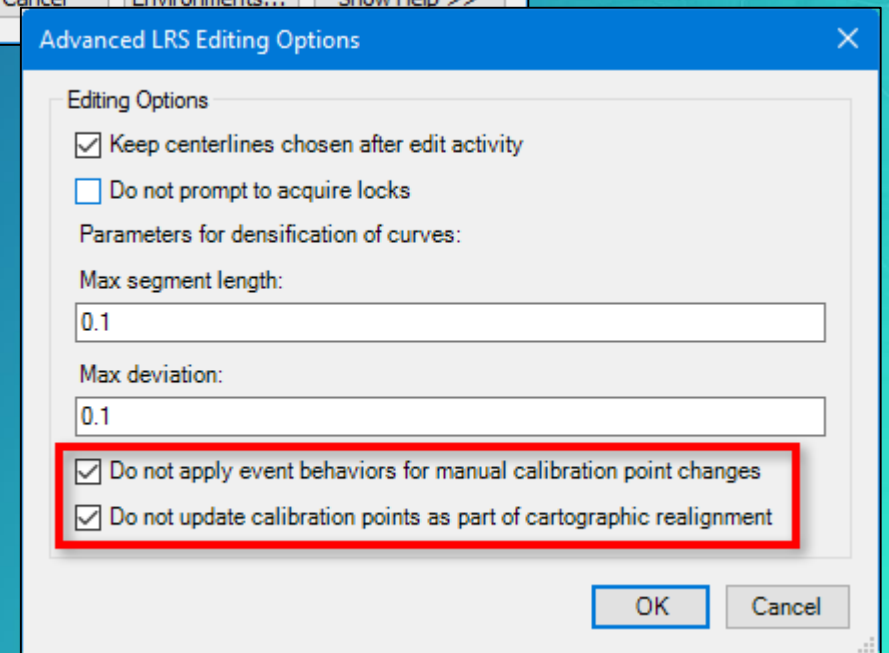
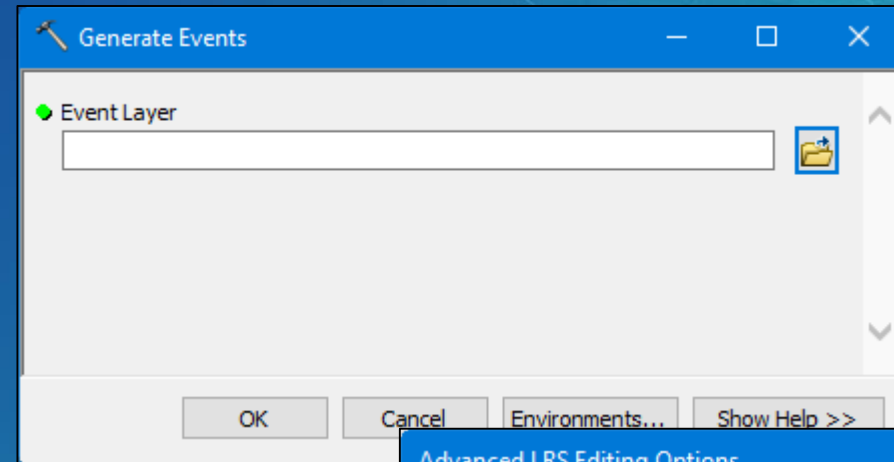
What's New in Desktop

10.5

- Generate Events geoprocessing tool
- Internationalization

10.5.1

- Do not apply event behaviors option for manual calibration point changes
- Do not update calibration points option during cartographic realignment



What's New in Enterprise



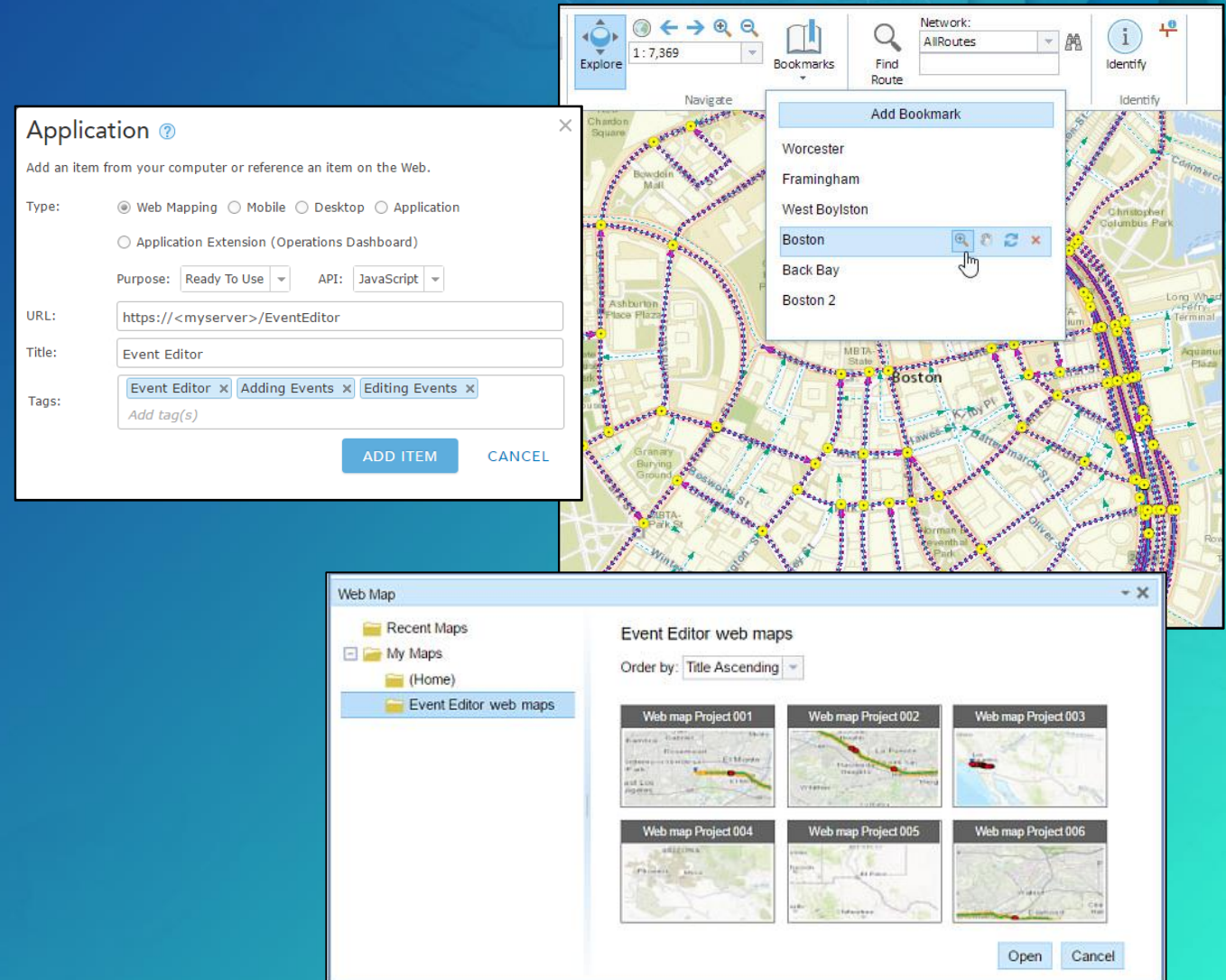
What's New in Enterprise

10.5 Event Editor

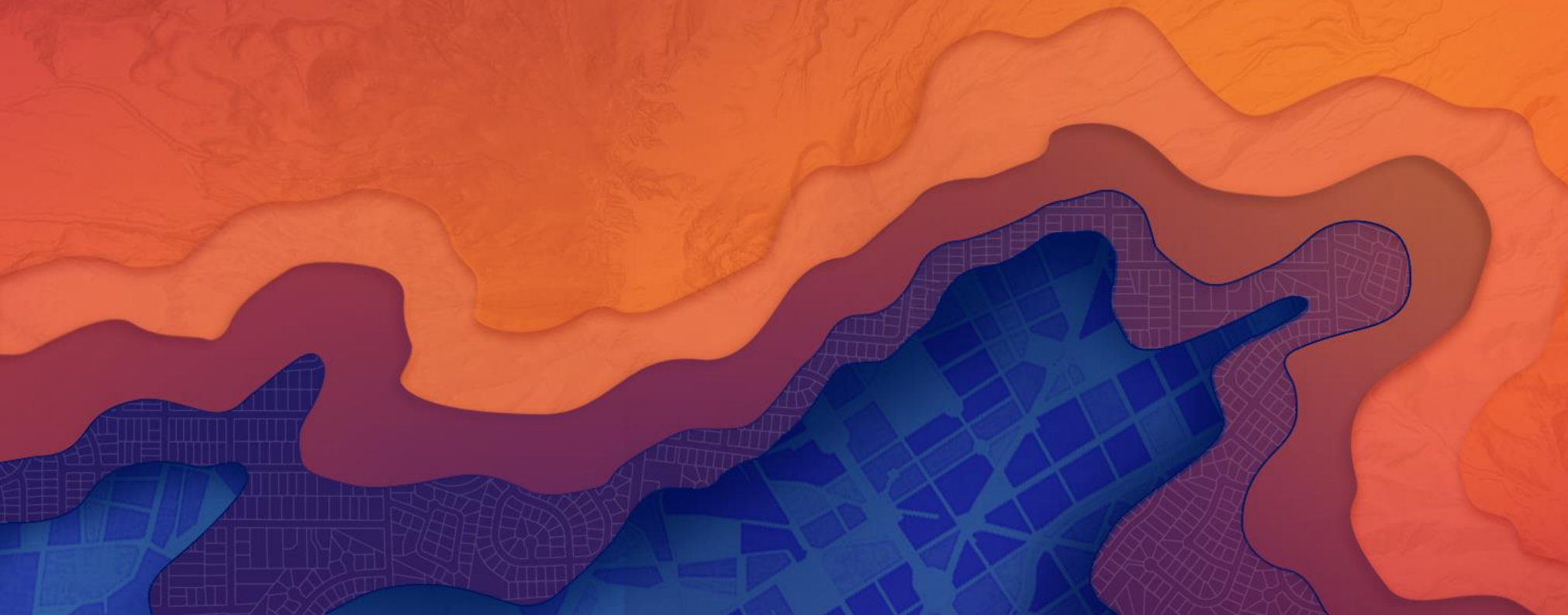
- Portal Security model support
- Attribute sets sorted alphabetically
- Moveable Identify window

10.5.1 Event Editor

- Save and load web maps to Portal
- Bookmark support
- Identify and view related records
- Subtype support



What's coming in 10.6



What's coming in 10.6

Desktop

- Cover event behavior for extend/realign
- Warn users if gap will be introduced during edit
- Delete locks when version is deleted

Enterprise (Event Editor)

- Change symbology
- Change layer order in table of contents
- Support definition queries on layers
- Keep tables/grids on same page when saving
- Dock widgets across two monitors



esri

THE
SCIENCE
OF
WHERE

Please Take Our Survey on the Esri Events App!

Download the Esri Events app and find your event



Select the session you attended



Scroll down to find the survey



Complete Answers and Select "Submit"

