

UC



# Data Interoperability Advanced

Bruce Harold – Esri Inc

Dale Lutz – Safe Software

# Topics

Ask Us About Anything

ArcGIS Pro 2.0

Web Connections

FME Hub

Custom Formats

Custom Transformers

Python

Multiprocessing

Working with ArcGIS Enterprise and Online



## ArcGIS



**FME  
HUB**

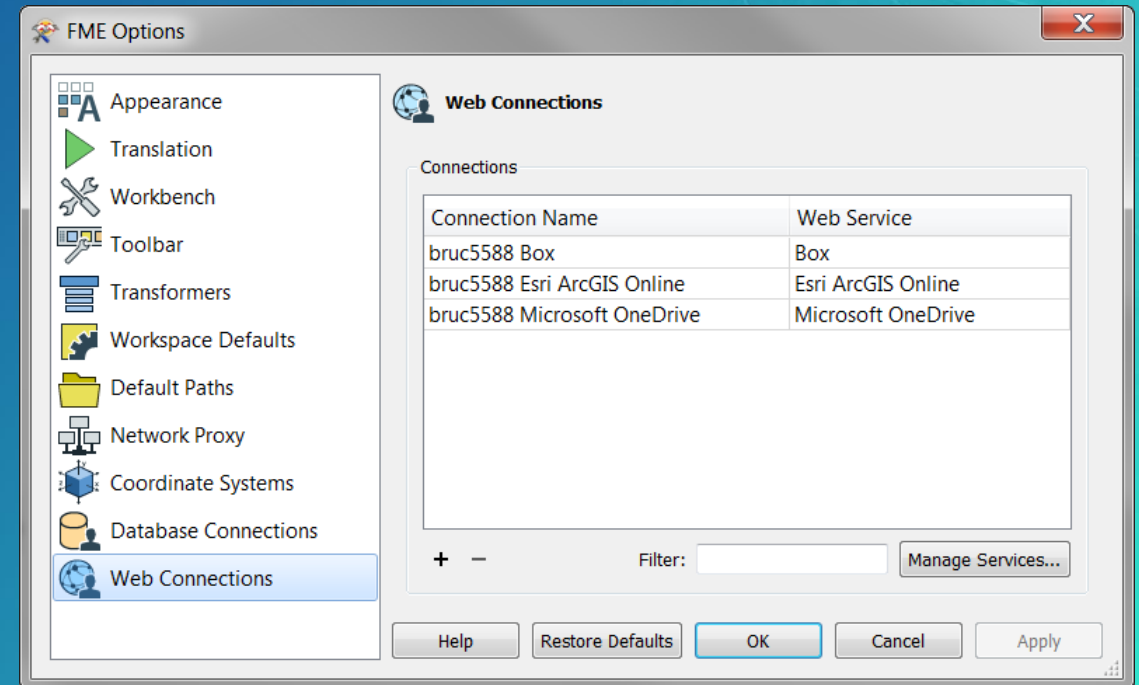
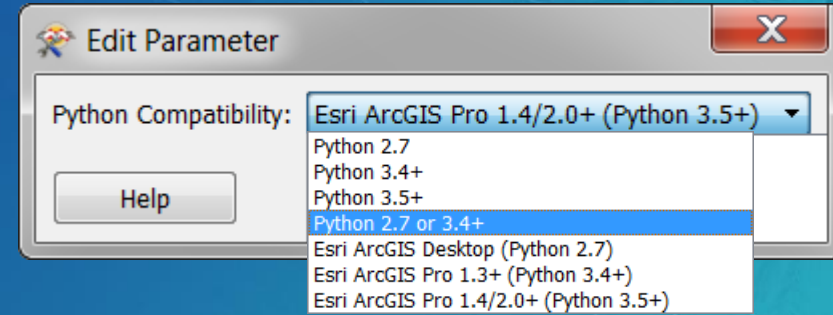
ArcGIS  
Enterprise



# Lets Start With ArcGIS Pro 2.0

## Data Interoperability

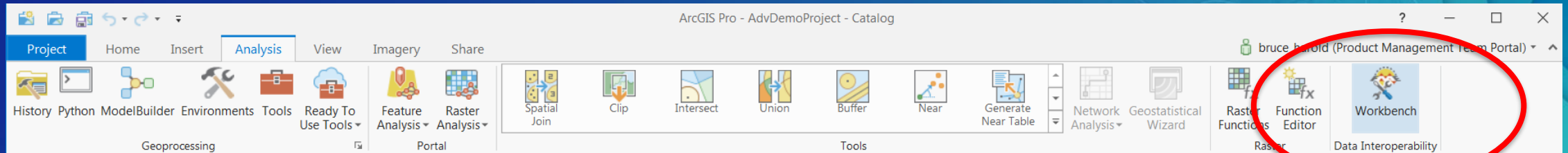
- FME 2017.0.1.1 Engine
  - Use FME 2017 Workspaces
  - Parameter Editor
  - Web Connector Transformers
  - Saved Web Connections
  - FME Hub Access
- Open and Edit 10.x ETL Tools
  - Like Modelbuilder, save as Pro tool only
- Python Compatibility
  - Pro Conda Environment Enabled Workspaces
  - Just This Workspace or Any Workspace



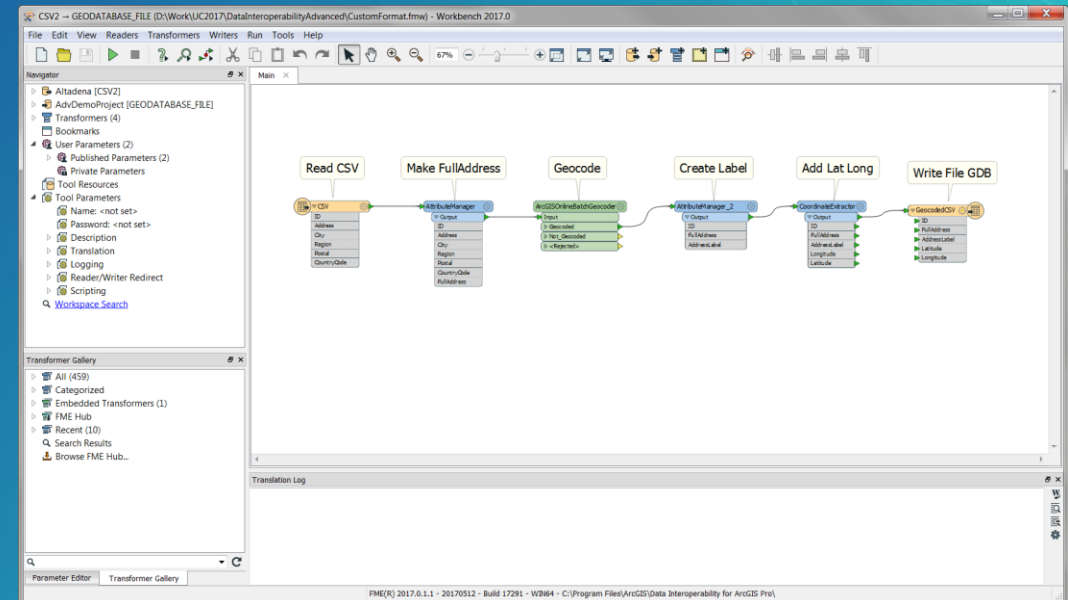


# Analysis Workspaces

## Data Interoperability



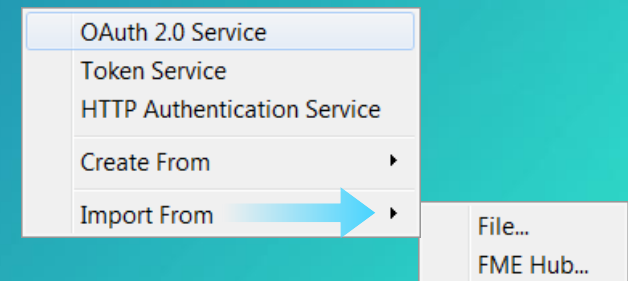
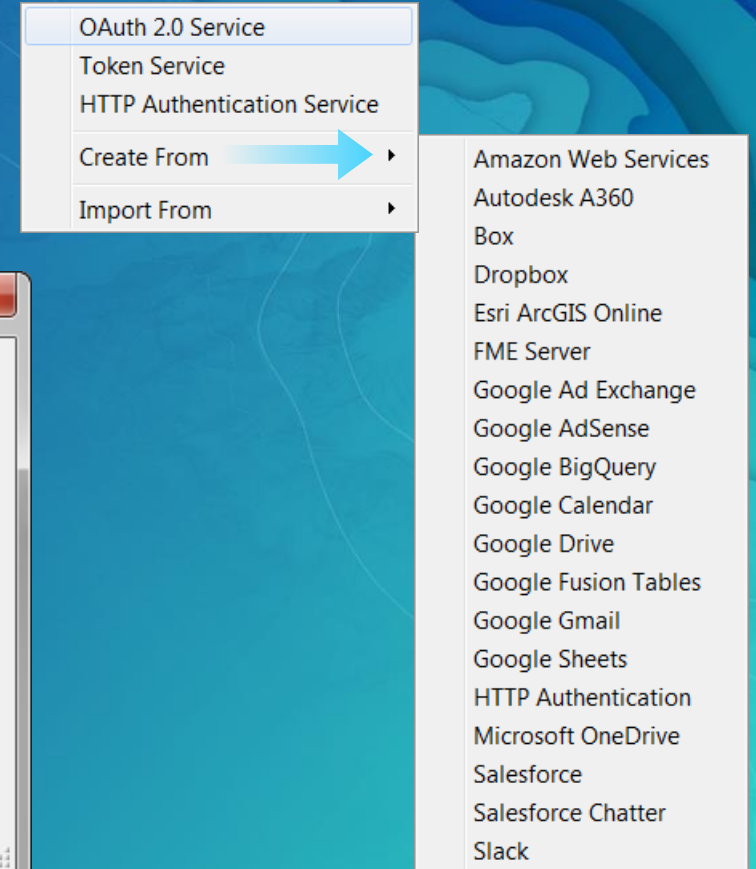
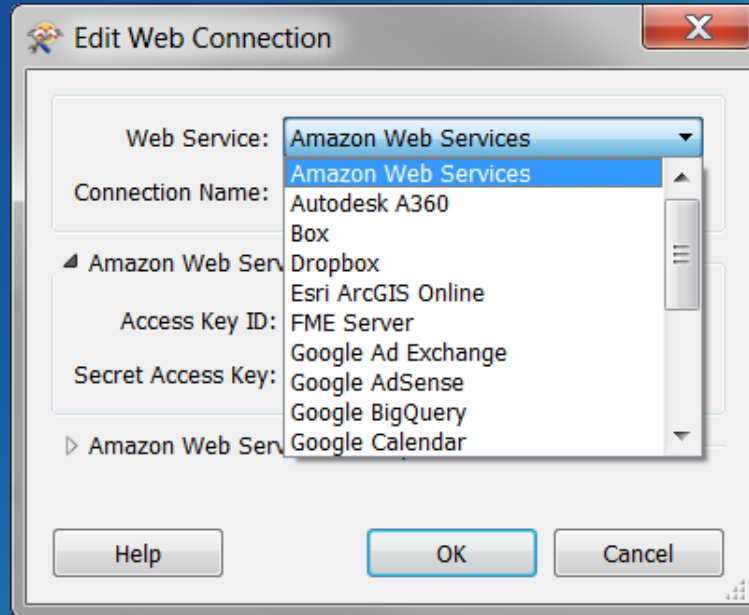
- Launch From Ribbon
- Prototype Workflows
  - Author
  - Open
  - Drag In Data or FMW
  - Save As
  - Export As
- Send To Email

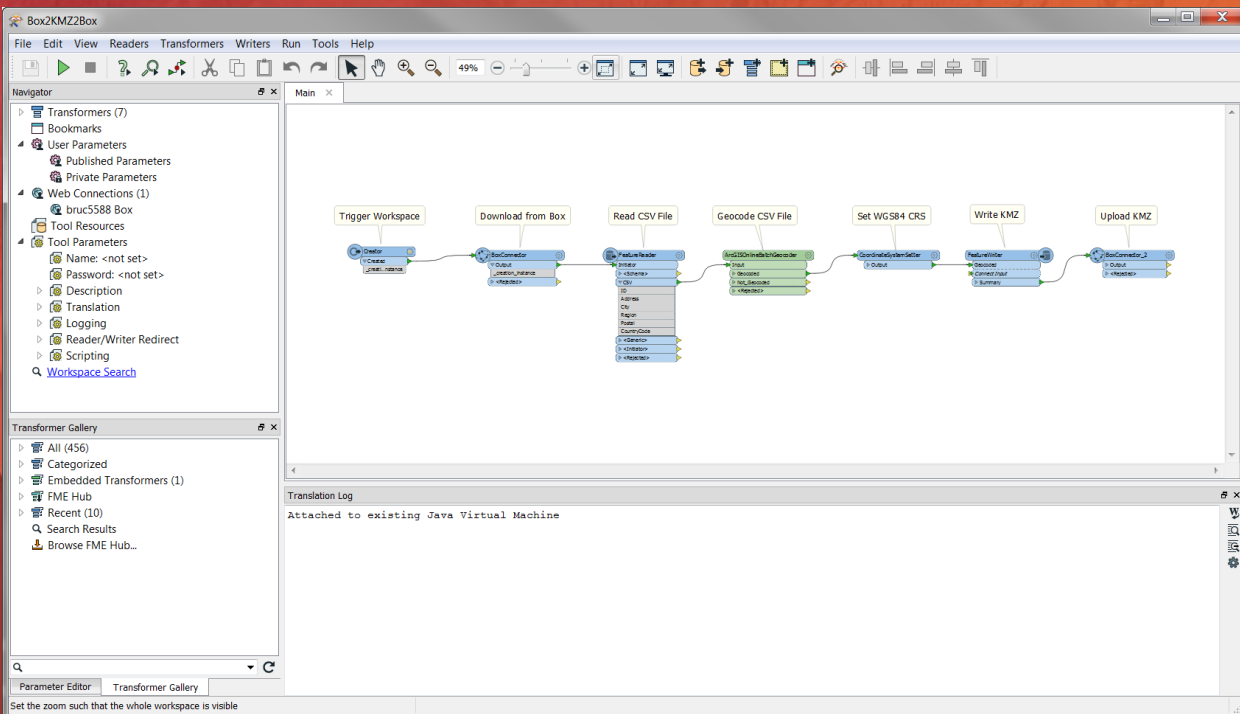


# What's a Web Connection?

## Data Interoperability

- Templates Preregistered
- Create/Authenticate Your Own
  - OAuth2
  - Token
  - HTTP
- Create From Template
- Import From File or Hub
- Saved To Cryptographic Keystore
  - May Be Shared Location
  - Public Visibility Option





# Demo: Web Connections

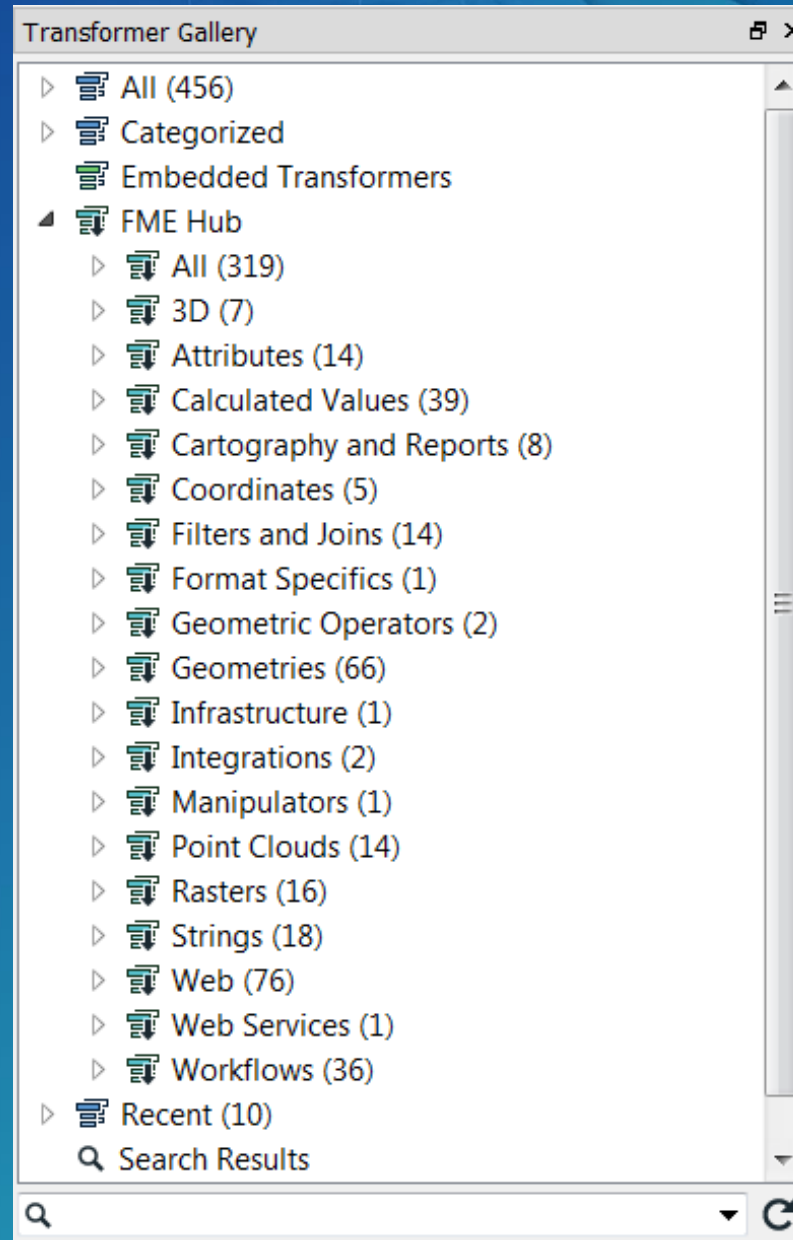
Web as Filesystem

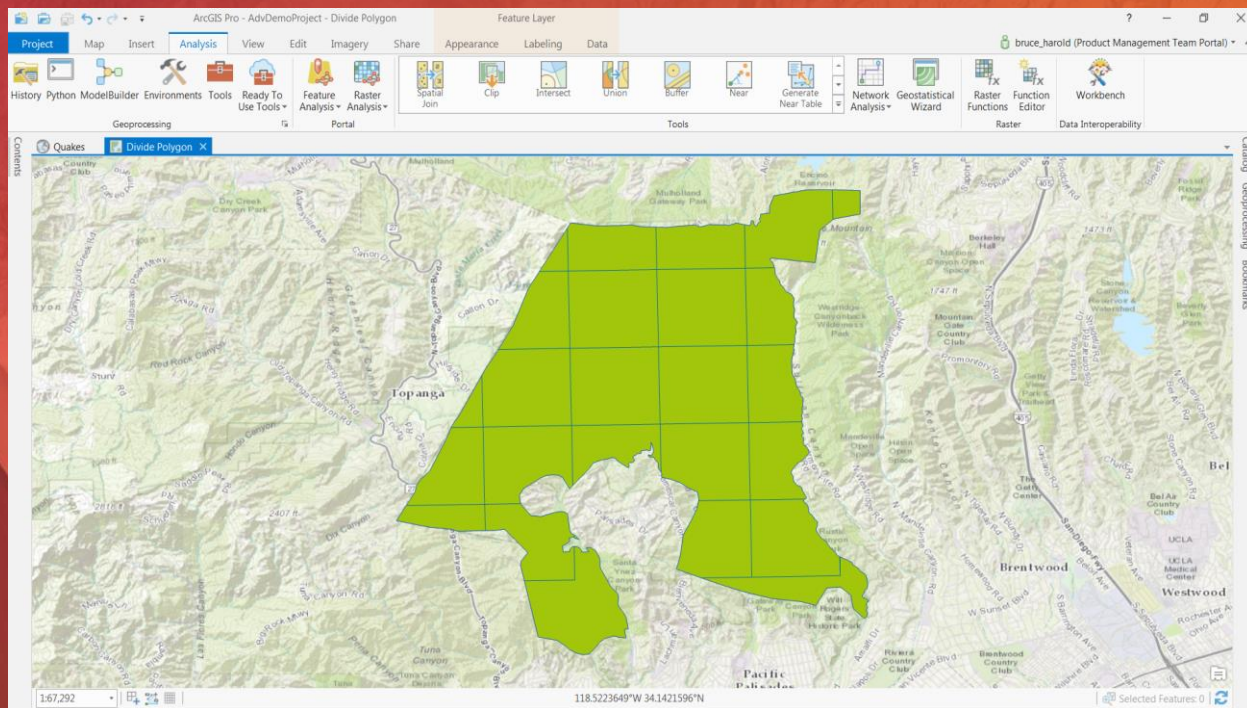


# What's FME Hub?

## Data Interoperability

- Community Platform
  - Transformers (in Gallery)
  - Formats
  - Templates
  - Web Connections
- Browse
  - <https://hub.safe.com>
- Related: Sharing
  - Email workspace





# Demo: FME Hub

## Polygon Division



# Custom Formats


Built from an existing format

Add your desired transformations

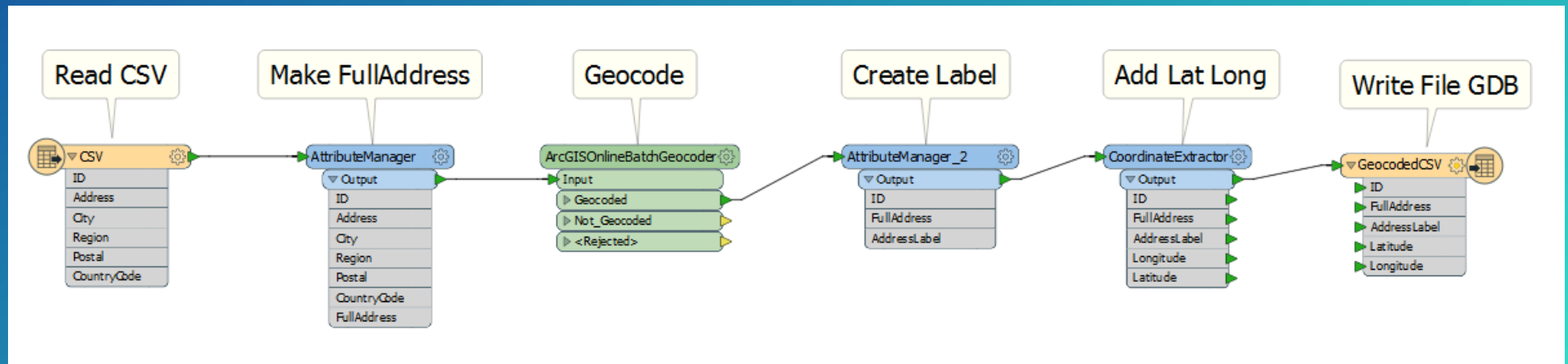
Write to your desired schema

Export as Custom Format

Opens Workbench, writes a FDS file

 GEOCODEDCSV.fds

Share, Install



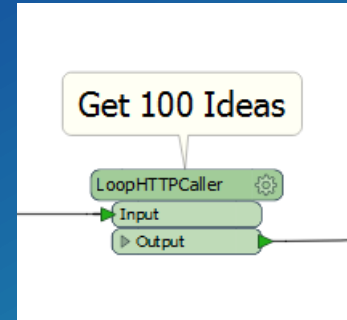
# Custom Transformers

Assemble transformers into logical unit

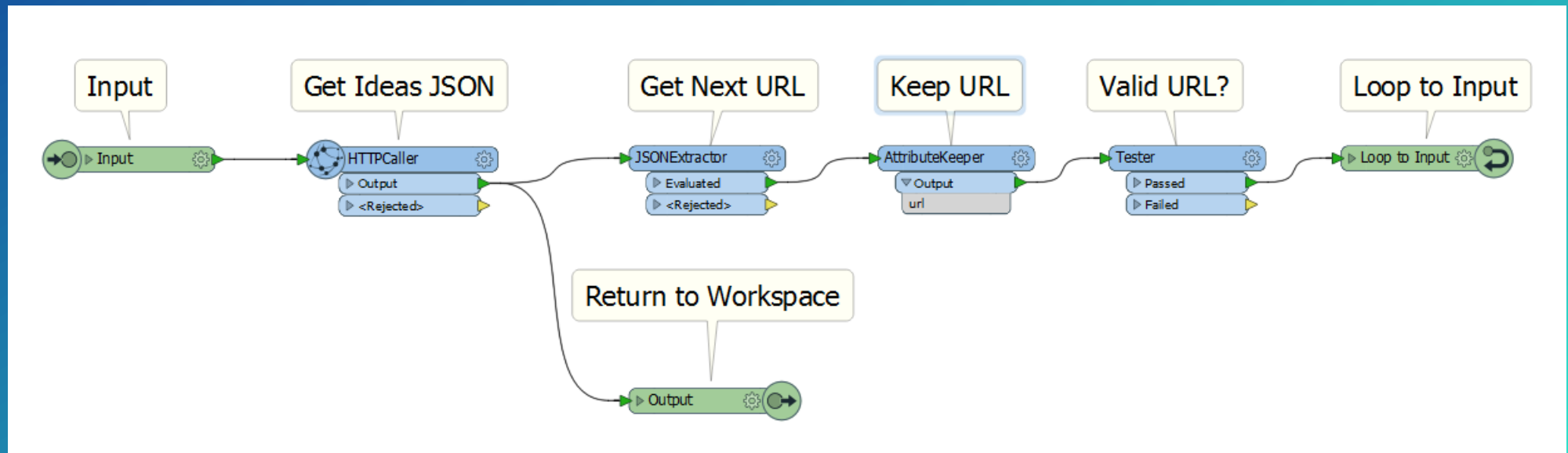
Declutters the workspace

Looping mechanism

Like grouping in ArcGIS Modelbuilder

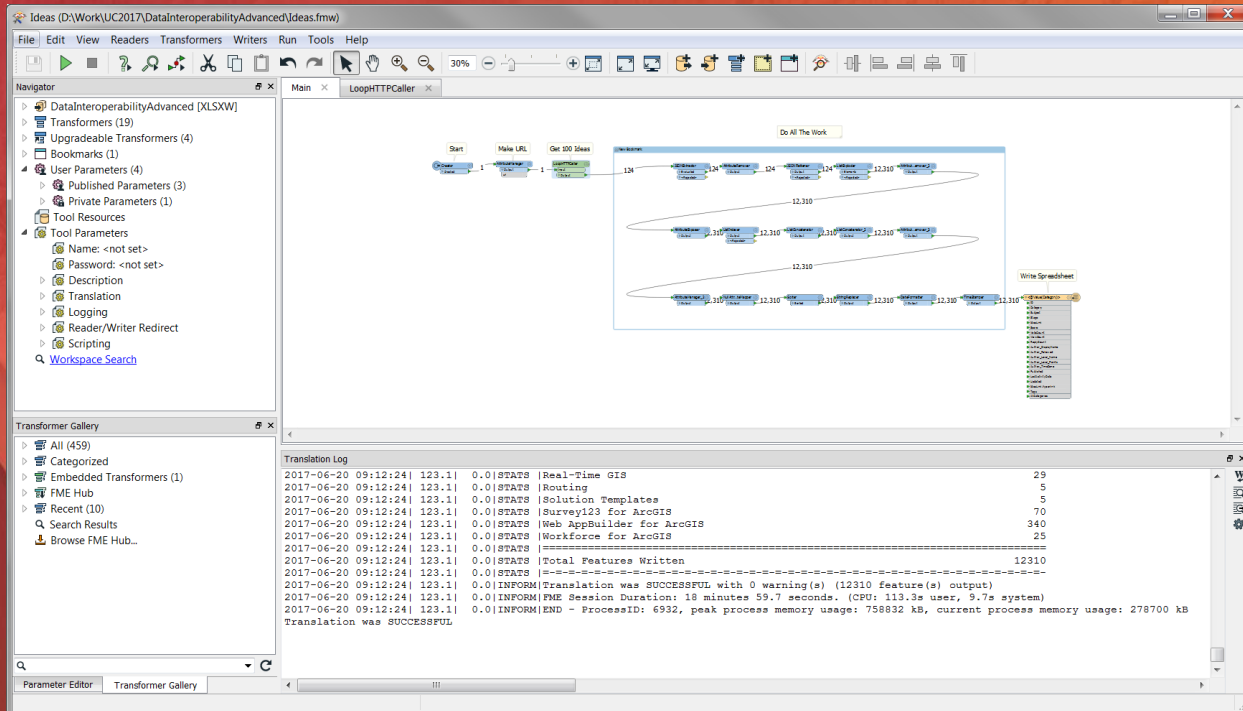


**HTTP Pagination Example**



# Demo: Custom Formats & Transformers

Geocoded CSV  
HTTP Pagination





# Python

Parameters available as a dictionary

## In-App Script Editor

Startup Scripts

Run first

Scripted Parameters

Runtime logic

PythonCreator

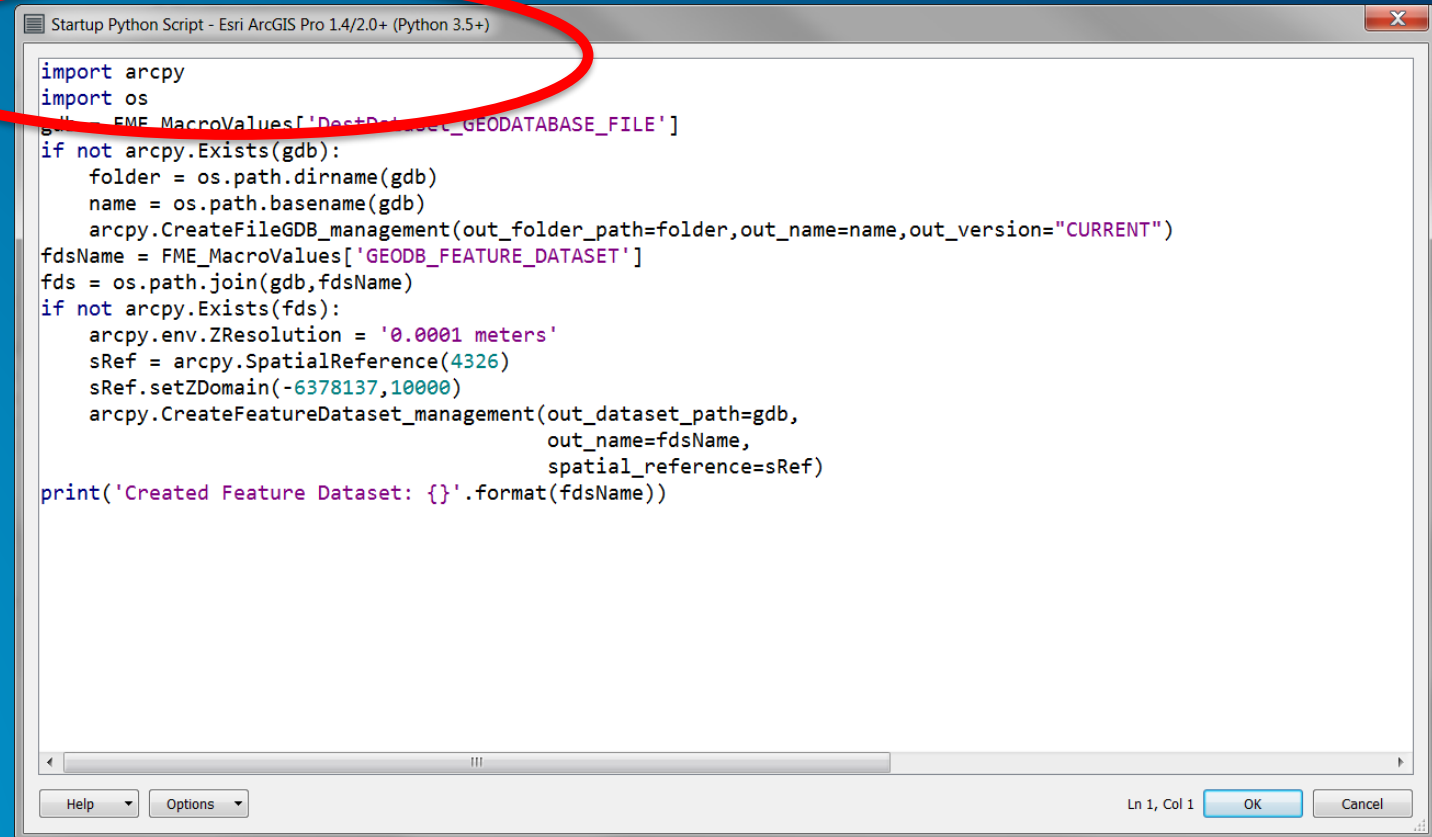
Make features

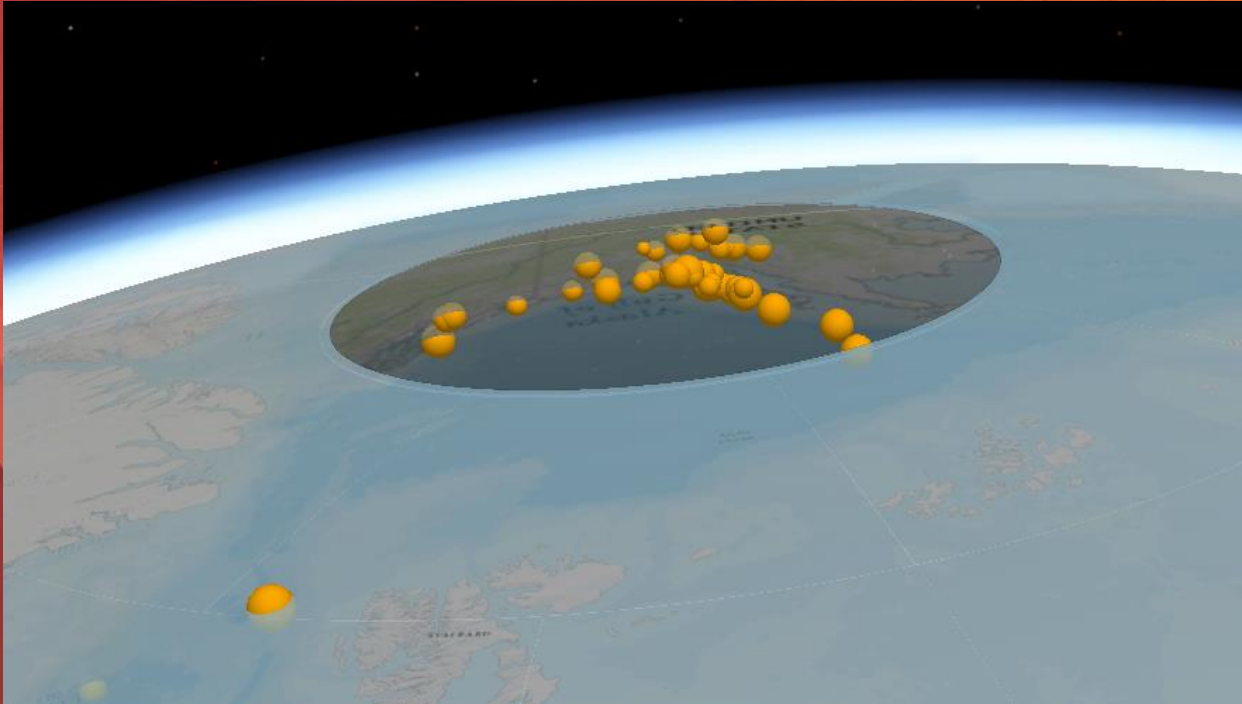
PythonCaller

Operate on features

Shutdown Scripts

Run last



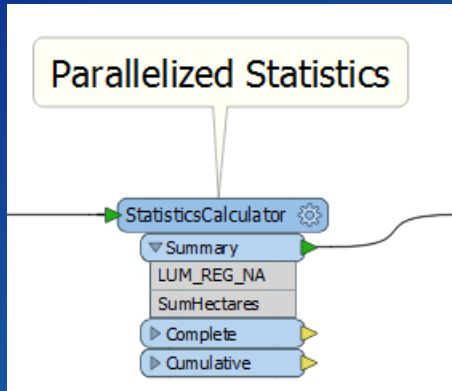


# Demo: Python

Startup Script Using ArcPy  
PythonCaller Feature Creation

# Multiprocessing

## Group By Attribute



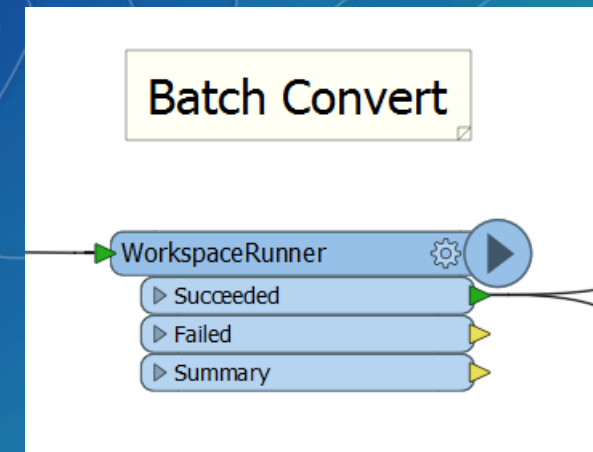
Transformer Name:

Group By:

Parallel Processing:

Input Ordered:

## WorkspaceRunner



WorkspaceRunner Parameters

Transformer Name:

FME Workspace:

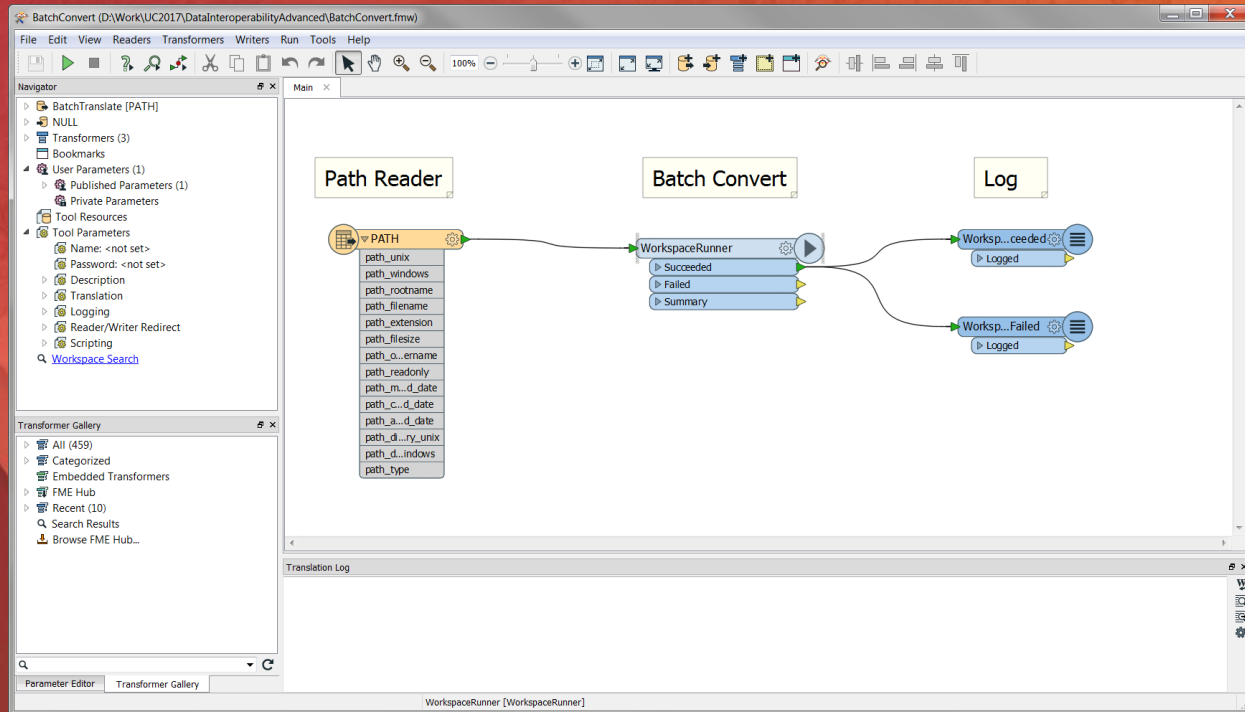
Wait for Job to Complete:

Maximum Number of Concurrent Workspaces (1-7):

Parameter	Value
Source CSV (Comma Separated Va...	<input type="text" value="path_windows"/>
Destination Microsoft Excel File	<input type="text" value="\$(FME_MF_DIR)BatchTranslate"/>

Help Defaults OK Cancel





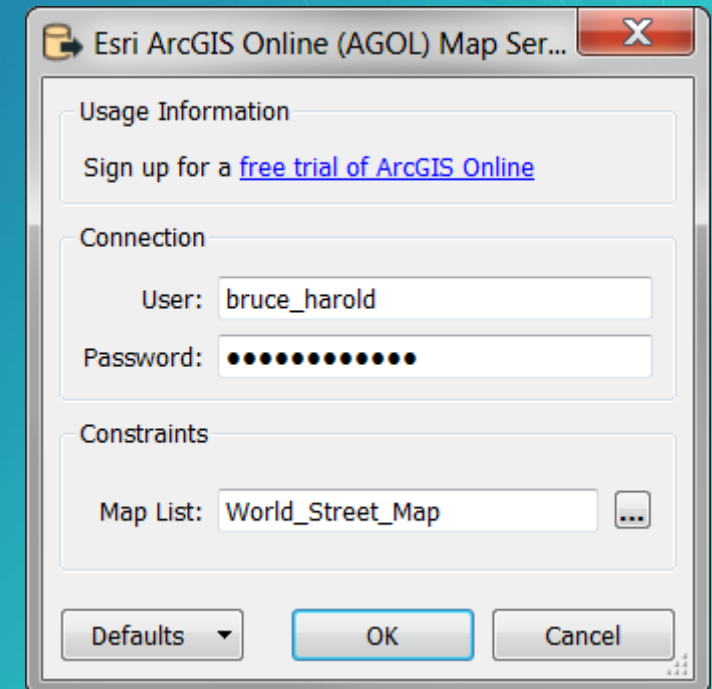
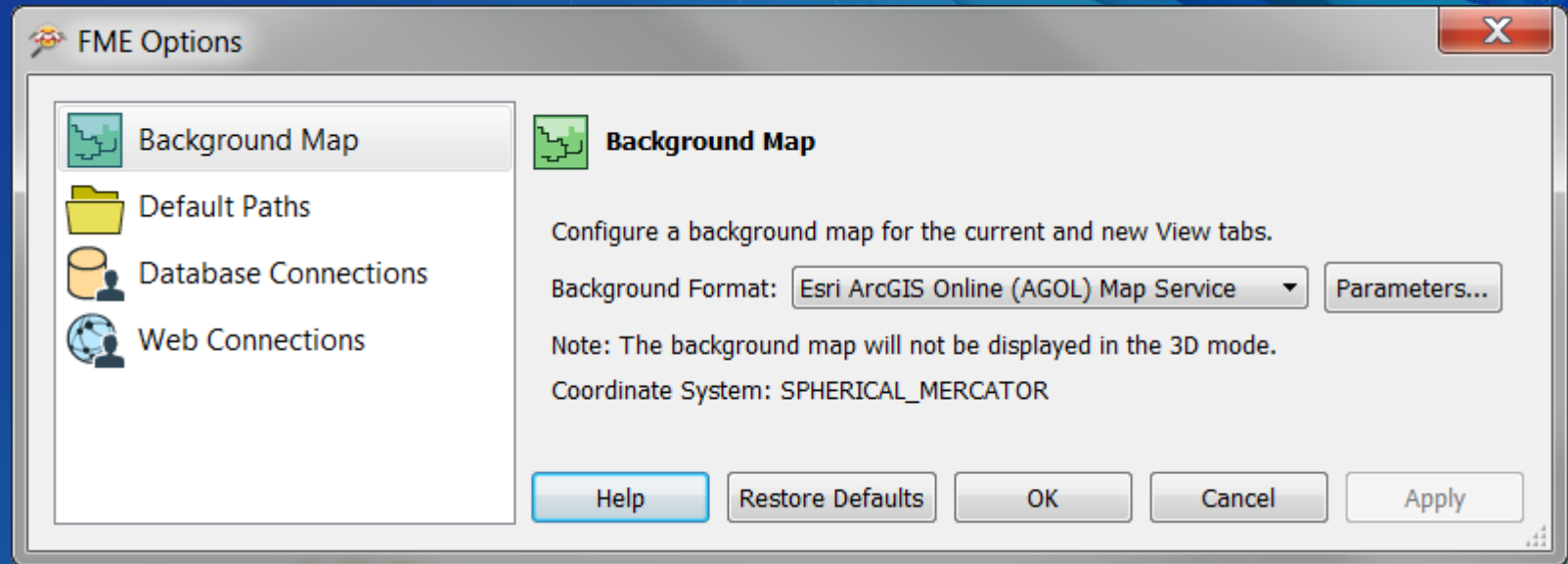
# Demo: Multiprocessing

## Parallelized Statistics Batch Conversion

# Working With Portals

ArcGIS Online and ArcGIS Enterprise

- Background Map
  - Existing
  - New
  - Add, Delete, Update
  - Truncate
- Images
  - HTTPCaller
  - ImageFetcher







# Question Time

- Bruce Harold [bharold@esri.com](mailto:bharold@esri.com)
- Dale Lutz <https://www.safe.com/live-chat/>

# Please Take Our Survey on the Esri Events App!

**Download the Esri Events app and find your event**



**Select the session you attended**



**Scroll down to find the survey**



**Complete Answers and Select "Submit"**





esri

THE  
SCIENCE  
OF  
WHERE